

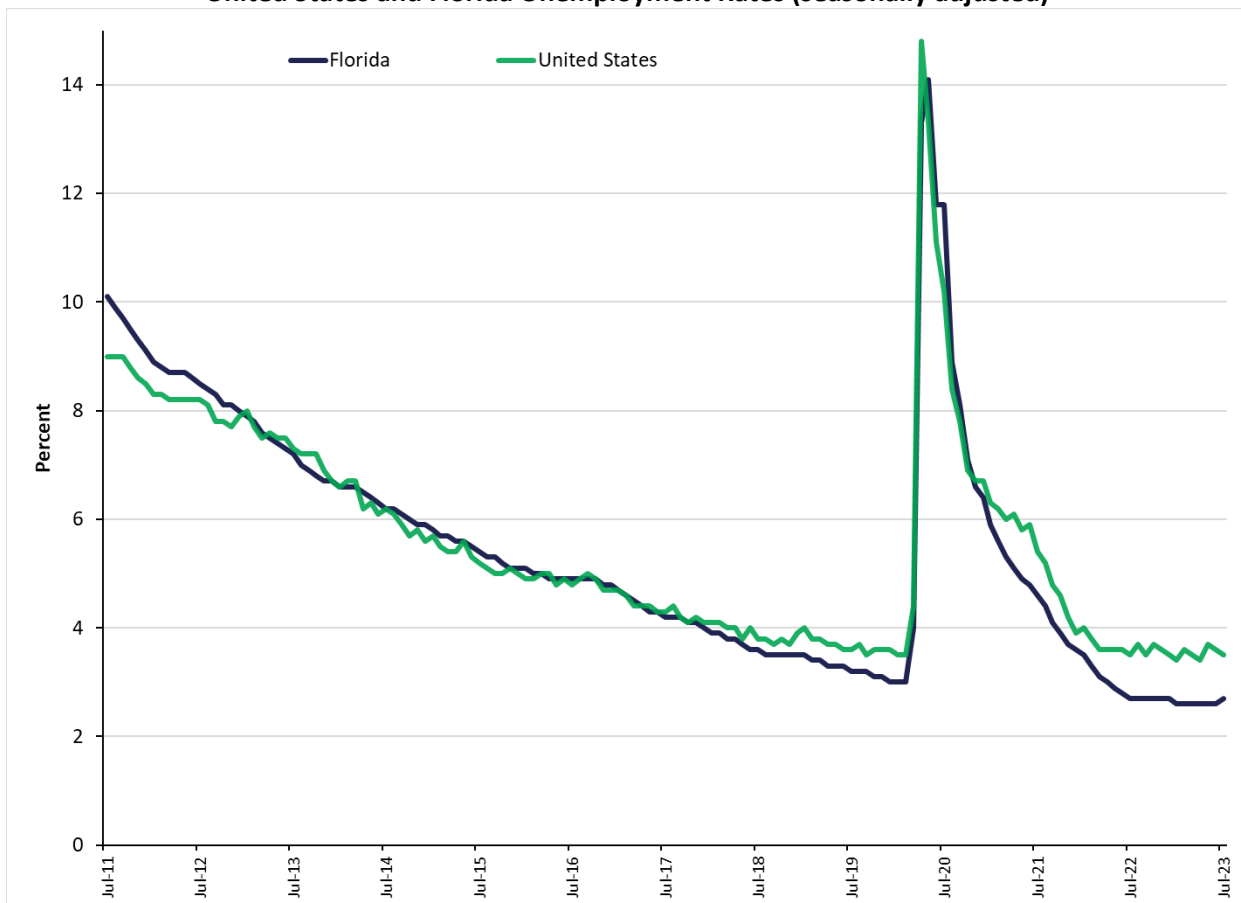
**CONTACT:** Bureau of Workforce Statistics  
and Economic Research  
(850) 245-7205

### Florida's July Figures Released

Florida's seasonally adjusted unemployment rate was 2.7 percent in July 2023, up 0.1 percentage point from the June 2023 rate, and unchanged from a year ago. There were 295,000 jobless Floridians out of a labor force of 11,081,000. The U.S. unemployment rate was 3.5 percent in July.

Florida's seasonally adjusted total nonagricultural employment was 9,771,600 in July 2023, an increase of 44,500 jobs (+0.5 percent) over the month. The state gained 300,600 jobs over the year, an increase of 3.2 percent. Nationally, the number of jobs rose 2.2 percent over the year.

**United States and Florida Unemployment Rates (seasonally adjusted)**



Source: U.S. Department of Labor, Bureau of Labor Statistics, Local Area Unemployment Statistics Program, in cooperation with the Florida Department of Commerce, Bureau of Workforce Statistics and Economic Research.

## Florida's Nonagricultural Employment by Industry (Seasonally Adjusted)

- Nine of ten major industries experienced positive over-the-year job growth in July.
- The industries gaining jobs over the year included education and health services (+89,800 jobs, +6.4 percent); leisure and hospitality (+53,200 jobs, +4.2 percent); trade, transportation, and utilities (+46,300 jobs, +2.4 percent); professional and business services (+45,400 jobs, +2.8 percent); total government (+23,600 jobs, +2.2 percent); manufacturing (+13,700 jobs, +3.3 percent); financial activities (+12,500 jobs, +1.9 percent); other services (+9,000 jobs, +2.6 percent); and construction (+7,800 jobs, +1.3 percent).
- The industry losing jobs over the year was information (-1,300 jobs, -0.8 percent).

## Local Area Unemployment Statistics (Not Seasonally Adjusted)

- In July 2023, Miami-Dade County and Monroe County had the state's lowest unemployment rate (1.9 percent each), followed by Okaloosa County, St. Johns County, and Gulf County (2.7 percent each), and Bay County, Wakulla County, and Walton County (2.8 percent each).
- Hendry County had the highest unemployment rate (6.6 percent) in Florida in July 2023, followed by Hardee County (4.8 percent), and Highlands County (4.7 percent).

## Area Nonagricultural Employment (Not Seasonally Adjusted)

- In July 2023, all 24 metro areas in Florida had over-the-year job gains. The areas with the largest gains were Tampa-St. Petersburg-Clearwater (+53,600 jobs, +3.7 percent), Miami-Miami Beach-Kendall (+47,500 jobs, +3.8 percent), and Orlando-Kissimmee-Sanford (+39,200 jobs, +2.8 percent).

The unemployment and job growth rates are estimates, which are primarily based on surveys created and mandated by the U.S. Bureau of Labor Statistics in cooperation with the Florida Department of Commerce.

The unemployment rate is derived from Florida household surveys conducted by the U.S. Census Bureau under contract with the U.S. Bureau of Labor Statistics. The job growth rate is derived from Florida employer surveys conducted by the U.S. Bureau of Labor Statistics.

Both estimates are revised on a monthly basis. In addition, these estimates are benchmarked (revised) annually based on actual counts from Florida's Reemployment Assistance tax records and other data.

Procedures mandated by the U.S. Bureau of Labor Statistics may result in more variable month-to-month changes. For further information, go to: <https://www.bls.gov/sae/>

The mission of the Florida Department of Commerce is to promote economic prosperity for all Floridians and businesses through successful workforce, community, and economic development strategies. Please visit [www.floridajobs.org](http://www.floridajobs.org) for more information.

*The next Florida Employment and Unemployment release will be September 15, 2023, at 10:00 A.M.*

LABOR FORCE STATUS OF THE CIVILIAN NONINSTITUTIONAL POPULATION  
RELEASE DATE: AUGUST 18, 2023

**SEASONALLY ADJUSTED**

	Current Month July 2023	Month Ago June 2023	Year Ago July 2022	Over-the-Month Change		Over-the-Year Change	
				Level	Percent	Level	Percent

**STATE OF FLORIDA**

Civilian Noninstitutional							
Population 16+	18,574,000	18,537,000	18,143,000	37,000	0.2	431,000	2.4
Civilian Labor Force	11,081,000	11,039,000	10,801,000	42,000	0.4	280,000	2.6
Employment	10,785,000	10,749,000	10,504,000	36,000	0.3	281,000	2.7
Unemployment	295,000	290,000	297,000	5,000	1.7	-2,000	-0.7
Unemployment Rate (%)	2.7	2.6	2.7	0.1	--	0.0	--

**UNITED STATES**

Civilian Noninstitutional							
Population 16+	267,002,000	266,801,000	264,012,000	201,000	0.1	2,990,000	1.1
Civilian Labor Force	167,103,000	166,951,000	163,990,000	152,000	0.1	3,113,000	1.9
Employment	161,262,000	160,994,000	158,272,000	268,000	0.2	2,990,000	1.9
Unemployment	5,841,000	5,957,000	5,718,000	-116,000	-1.9	123,000	2.2
Unemployment Rate (%)	3.5	3.6	3.5	-0.1	--	0.0	--

**NOT SEASONALLY ADJUSTED**

	Current Month July 2023	Month Ago June 2023	Year Ago July 2022	Over-the-Month Change		Over-the-Year Change	
				Level	Percent	Level	Percent

**STATE OF FLORIDA**

Civilian Noninstitutional							
Population 16+	18,574,000	18,537,000	18,143,000	37,000	0.2	431,000	2.4
Civilian Labor Force	11,178,000	11,129,000	10,794,000	49,000	0.4	384,000	3.6
Employment	10,835,000	10,797,000	10,469,000	38,000	0.4	366,000	3.5
Unemployment	342,000	332,000	325,000	10,000	3.0	17,000	5.2
Unemployment Rate (%)	3.1	3.0	3.0	0.1	--	0.1	--

**UNITED STATES**

Civilian Noninstitutional							
Population 16+	267,002,000	266,801,000	264,012,000	201,000	0.1	2,990,000	1.1
Civilian Labor Force	168,354,000	167,910,000	165,321,000	444,000	0.3	3,033,000	1.8
Employment	161,982,000	161,559,000	159,067,000	423,000	0.3	2,915,000	1.8
Unemployment	6,372,000	6,351,000	6,255,000	21,000	0.3	117,000	1.9
Unemployment Rate (%)	3.8	3.8	3.8	0.0	--	0.0	--

Note: All estimates except unemployment rates are rounded to the nearest thousand. Items may not add to totals or compute to displayed percentages due to rounding. All data are subject to revision.

Source: U.S. Department of Labor, Bureau of Labor Statistics, Local Area Unemployment Statistics Program, in cooperation with the Florida Department of Commerce, Bureau of Workforce Statistics and Economic Research.

**Nonagricultural Employment in Florida  
Seasonally Adjusted**

	July 2023	June 2023	July 2022	Over-the-Month Change		Over-the-Year Change	
				Level	Percent	Level	Percent
Total Nonagricultural Employment	9,771,600	9,727,100	9,471,000	44,500	0.5	300,600	3.2
Total Private	8,655,200	8,612,400	8,378,200	42,800	0.5	277,000	3.3
Goods Producing	1,043,200	1,034,900	1,021,100	8,300	0.8	22,100	2.2
Mining, Logging, and Construction	618,600	614,600	610,200	4,000	0.7	8,400	1.4
Construction	612,700	608,700	604,900	4,000	0.7	7,800	1.3
Manufacturing	424,600	420,300	410,900	4,300	1.0	13,700	3.3
Durable Goods	296,600	294,800	282,200	1,800	0.6	14,400	5.1
Nondurable Goods	128,000	125,500	128,700	2,500	2.0	-700	-0.5
Service Producing	8,728,400	8,692,200	8,449,900	36,200	0.4	278,500	3.3
Private Service Providing	7,612,000	7,577,500	7,357,100	34,500	0.5	254,900	3.5
Trade, Transportation, and Utilities	1,984,300	1,979,200	1,938,000	5,100	0.3	46,300	2.4
Wholesale Trade	393,900	391,100	379,300	2,800	0.7	14,600	3.8
Retail Trade	1,152,300	1,151,200	1,133,600	1,100	0.1	18,700	1.6
Transportation, Warehousing, and Utilities	438,100	436,900	425,100	1,200	0.3	13,000	3.1
Information	156,100	155,800	157,400	300	0.2	-1,300	-0.8
Financial Activities	681,200	679,800	668,700	1,400	0.2	12,500	1.9
Finance and Insurance	457,500	456,700	455,000	800	0.2	2,500	0.5
Real Estate, Rental, and Leasing	223,700	223,100	213,700	600	0.3	10,000	4.7
Professional and Business Services	1,644,800	1,634,200	1,599,400	10,600	0.6	45,400	2.8
Professional and Technical Services	760,400	748,500	717,200	11,900	1.6	43,200	6.0
Management of Companies and Enterprises	132,400	132,100	126,500	300	0.2	5,900	4.7
Administrative and Waste Services	752,000	753,600	755,700	-1,600	-0.2	-3,700	-0.5
Education and Health Services	1,486,500	1,472,200	1,396,700	14,300	1.0	89,800	6.4
Educational Services	202,500	200,100	192,500	2,400	1.2	10,000	5.2
Health Care and Social Assistance	1,284,000	1,272,100	1,204,200	11,900	0.9	79,800	6.6
Leisure and Hospitality	1,306,200	1,306,400	1,253,000	-200	*	53,200	4.2
Arts, Entertainment, and Recreation	254,900	253,000	241,400	1,900	0.8	13,500	5.6
Accommodation and Food Services	1,051,300	1,053,400	1,011,600	-2,100	-0.2	39,700	3.9
Other Services	352,900	349,900	343,900	3,000	0.9	9,000	2.6

Source: U.S. Department of Labor, Bureau of Labor Statistics, Current Employment Statistics Program.  
Prepared by: Florida Department of Commerce, Bureau of Workforce Statistics and Economic Research.

**Nonagricultural Employment in Florida  
Seasonally Adjusted**

	July 2023	June 2023	July 2022	Over-the-Month Change		Over-the-Year Change	
				Level	Percent	Level	Percent
Total Government	1,116,400	1,114,700	1,092,800	1,700	0.2	23,600	2.2
Federal Government	155,400	154,800	149,500	600	0.4	5,900	3.9
State Government	242,000	242,300	238,100	-300	-0.1	3,900	1.6
Local Government	719,000	717,600	705,200	1,400	0.2	13,800	2.0

Released: August 18, 2023

p = preliminary, r = revised

\* - less than 0.1 percent

Note: Sum of detail may not equal totals due to rounding or the exclusion of certain industries from publication. All data are subject to revision.

**NONAGRICULTURAL EMPLOYMENT IN FLORIDA  
STATEWIDE (Not Seasonally Adjusted)**

Released August 18, 2023

Series	Industry Title	July 2023	June 2023	July 2022	Change from		Jul 2022 to Jul 2023 Level	Jul 2022 to Jul 2023 Percent
					Jun 2023 to Jul 2023 Level	Jun 2023 to Jul 2023 Percent		
00000000	Total Nonfarm	9,655,700	9,628,200	9,339,600	27,500	0.3%	316,100	3.4%
05000000	Total Private	8,615,500	8,582,700	8,322,700	32,800	0.4%	292,800	3.5%
06000000	Goods Producing	1,045,000	1,038,500	1,022,900	6,500	0.6%	22,100	2.2%
07000000	Service-Providing	8,610,700	8,589,700	8,316,700	21,000	0.2%	294,000	3.5%
08000000	Private Service Providing	7,570,500	7,544,200	7,299,800	26,300	0.3%	270,700	3.7%
10000000	Mining and Logging	5,900	5,900	5,600	0	0.0%	300	5.4%
10212000	Mining (except Oil and Gas)	3,400	3,500	3,300	-100	-2.9%	100	3.0%
15000000	Mining, Logging and Construction	620,300	616,400	611,400	3,900	0.6%	8,900	1.5%
20000000	Construction	614,400	610,500	605,800	3,900	0.6%	8,600	1.4%
20236000	Construction of Buildings	124,200	125,000	123,600	-800	-0.6%	600	0.5%
20237000	Heavy and Civil Engineering Construction	76,600	76,100	76,400	500	0.7%	200	0.3%
20238000	Specialty Trade Contractors	413,600	409,400	405,800	4,200	1.0%	7,800	1.9%
20238200	Building Equipment Contractors	182,000	179,600	178,100	2,400	1.3%	3,900	2.2%
30000000	Manufacturing	424,700	422,100	411,500	2,600	0.6%	13,200	3.2%
31000000	Durable Goods	296,900	296,100	283,200	800	0.3%	13,700	4.8%
31332000	Fabricated Metal Product Manufacturing	46,600	46,500	44,100	100	0.2%	2,500	5.7%
31334000	Computer and Electronic Product Manufacturing	48,600	48,400	46,000	200	0.4%	2,600	5.7%
31334200	Communications Equipment Manufacturing	5,900	5,900	5,700	0	0.0%	200	3.5%
31336000	Transportation Equipment Manufacturing	59,400	59,400	54,500	0	0.0%	4,900	9.0%
31336400	Aerospace Product and Parts Manufacturing	32,600	32,400	29,800	200	0.6%	2,800	9.4%
31339000	Miscellaneous Manufacturing	37,100	37,100	35,600	0	0.0%	1,500	4.2%
32000000	Non-Durable Goods	127,800	126,000	128,300	1,800	1.4%	-500	-0.4%
32311000	Food Manufacturing	35,100	34,900	35,400	200	0.6%	-300	-0.8%
32312000	Beverage and Tobacco Product Manufacturing	13,800	13,700	13,500	100	0.7%	300	2.2%
32322000	Paper Manufacturing	7,800	7,700	7,900	100	1.3%	-100	-1.3%
32323000	Printing and Related Support Activities	16,800	16,600	16,600	200	1.2%	200	1.2%
32325000	Chemical Manufacturing	28,000	27,900	27,700	100	0.4%	300	1.1%
40000000	Trade, Transportation, and Utilities	1,968,500	1,966,500	1,917,300	2,000	0.1%	51,200	2.7%
<b>41000000</b>	<b>Wholesale Trade</b>	<b>395,600</b>	<b>392,500</b>	<b>379,100</b>	<b>3,100</b>	<b>0.8%</b>	<b>16,500</b>	<b>4.4%</b>
41423000	Merchant Wholesalers, Durable Goods	215,000	213,300	206,900	1,700	0.8%	8,100	3.9%
41423400	Professional and Commercial Equipment and Supplies Merchant Wholesalers	58,400	57,900	56,200	500	0.9%	2,200	3.9%
41423600	Household Appliances and Electrical and Electronic Goods Merchant Wholesalers	25,000	24,800	24,300	200	0.8%	700	2.9%
41423800	Machinery, Equipment, and Supplies Merchant Wholesalers	40,000	39,000	35,800	1,000	2.6%	4,200	11.7%
41424000	Merchant Wholesalers, Nondurable Goods	156,900	155,500	147,200	1,400	0.9%	9,700	6.6%
41424400	Grocery and Related Product Merchant Wholesalers	61,200	60,800	59,300	400	0.7%	1,900	3.2%
41425000	Wholesale Trade Agents and Brokers	23,700	23,700	25,000	0	0.0%	-1,300	-5.2%
<b>42000000</b>	<b>Retail Trade</b>	<b>1,141,500</b>	<b>1,142,600</b>	<b>1,121,100</b>	<b>-1,100</b>	<b>-0.1%</b>	<b>20,400</b>	<b>1.8%</b>
42441000	Motor Vehicle and Parts Dealers	161,800	161,200	156,700	600	0.4%	5,100	3.3%
42441100	Automobile Dealers	101,700	101,600	97,900	100	0.1%	3,800	3.9%
42444000	Building Material and Garden Equipment and Supplies Dealers	101,200	103,000	100,100	-1,800	-1.7%	1,100	1.1%
42445000	Food and Beverage Retailers	262,100	261,100	250,800	1,000	0.4%	11,300	4.5%

Source: U.S. Department of Labor, Bureau of Labor Statistics, Current Employment Statistics Program.

Prepared by: Florida Department of Commerce, Bureau of Workforce Statistics and Economic Research.

**NONAGRICULTURAL EMPLOYMENT IN FLORIDA  
STATEWIDE (Not Seasonally Adjusted)**

Released August 18, 2023

Series	Industry Title	July 2023	June 2023	July 2022	Change from			
					Jun 2023 to Jul 2023 Level	Percent	Jul 2022 to Jul 2023 Level	Percent
42449000	Furniture, Home Furnishings, Electronics, and Appliance Retailers	70,000	70,200	71,800	-200	-0.3%	-1,800	-2.5%
42449100	Furniture and Home Furnishings Retailers	36,300	36,300	36,300	0	0.0%	0	0.0%
42449200	Electronics and Appliance Retailers	33,700	33,900	35,500	-200	-0.6%	-1,800	-5.1%
42455000	General Merchandise Retailers	217,800	218,400	212,300	-600	-0.3%	5,500	2.6%
42455100	Department Stores	66,700	66,900	66,500	-200	-0.3%	200	0.3%
42455200	Warehouse Clubs, Supercenters, and Other General Merchandise Retailers	151,100	151,500	145,800	-400	-0.3%	5,300	3.6%
42456000	Health and Personal Care Retailers	87,100	88,800	86,800	-1,700	-1.9%	300	0.3%
42457000	Gasoline Stations and Fuel Dealers	48,300	47,900	48,800	400	0.8%	-500	-1.0%
42458000	Clothing, Clothing Accessories, Shoe, and Jewelry Retailers	94,600	93,200	93,600	1,400	1.5%	1,000	1.1%
42459000	Sporting Goods, Hobby, Musical Instrument, Book, and Miscellaneous Retailers	98,600	98,800	100,200	-200	-0.2%	-1,600	-1.6%
<b>43000000</b>	<b>Transportation, Warehousing, and Utilities</b>	<b>431,400</b>	<b>431,400</b>	<b>417,100</b>	<b>0</b>	<b>0.0%</b>	<b>14,300</b>	<b>3.4%</b>
43220000	Utilities	24,200	24,200	23,500	0	0.0%	700	3.0%
43400089	Transportation and Warehousing	407,200	407,200	393,600	0	0.0%	13,600	3.5%
43481000	Air Transportation	57,600	57,600	54,000	0	0.0%	3,600	6.7%
43483000	Water Transportation	19,000	18,900	16,900	100	0.5%	2,100	12.4%
43484000	Truck Transportation	71,700	70,600	69,600	1,100	1.6%	2,100	3.0%
43488000	Support Activities for Transportation	69,800	70,800	69,000	-1,000	-1.4%	800	1.2%
43492000	Couriers and Messengers	60,100	61,000	61,000	-900	-1.5%	-900	-1.5%
43493000	Warehousing and Storage	104,300	104,300	101,200	0	0.0%	3,100	3.1%
50000000	Information	157,100	155,600	156,900	1,500	1.0%	200	0.1%
50513000	Publishing Industries	43,000	42,500	42,700	500	1.2%	300	0.7%
50516000	Broadcasting and Content Providers	16,800	16,900	16,600	-100	-0.6%	200	1.2%
50517000	Telecommunications	47,100	47,100	48,200	0	0.0%	-1,100	-2.3%
50517111	Wired Telecommunications Carriers	35,400	35,500	36,100	-100	-0.3%	-700	-1.9%
50518000	Computing Infrastructure Providers, Data Processing, Web Hosting, and Related	29,400	29,500	28,800	-100	-0.3%	600	2.1%
55000000	Financial Activities	682,800	679,100	668,900	3,700	0.5%	13,900	2.1%
<b>55200000</b>	<b>Finance and Insurance</b>	<b>457,000</b>	<b>455,200</b>	<b>454,400</b>	<b>1,800</b>	<b>0.4%</b>	<b>2,600</b>	<b>0.6%</b>
55222000	Credit Intermediation and Related Activities including Monetary Authorities - Cent	182,900	182,900	184,100	0	0.0%	-1,200	-0.7%
55222100	Depository Credit Intermediation including Monetary Authorities - Central Bank	118,400	119,000	117,600	-600	-0.5%	800	0.7%
55240000	Insurance Carriers and Related Activities	208,700	208,500	209,700	200	0.1%	-1,000	-0.5%
55241000	Insurance Carriers	100,800	101,300	99,500	-500	-0.5%	1,300	1.3%
55242000	Agencies, Brokerages, and Other Insurance Related Activities	107,900	107,200	110,200	700	0.7%	-2,300	-2.1%
<b>55300000</b>	<b>Real Estate and Rental and Leasing</b>	<b>225,800</b>	<b>223,900</b>	<b>214,500</b>	<b>1,900</b>	<b>0.8%</b>	<b>11,300</b>	<b>5.3%</b>
55310000	Real Estate	175,200	173,600	167,200	1,600	0.9%	8,000	4.8%
60000000	Professional and Business Services	1,634,300	1,628,300	1,594,600	6,000	0.4%	39,700	2.5%
<b>60540000</b>	<b>Professional, Scientific, and Technical Services</b>	<b>757,700</b>	<b>746,500</b>	<b>717,100</b>	<b>11,200</b>	<b>1.5%</b>	<b>40,600</b>	<b>5.7%</b>
60541100	Legal Services	115,200	113,900	111,300	1,300	1.1%	3,900	3.5%
60541200	Accounting, Tax Preparation, Bookkeeping, and Payroll Services	94,800	91,600	84,400	3,200	3.5%	10,400	12.3%
60541300	Architectural, Engineering, and Related Services	110,500	109,000	102,200	1,500	1.4%	8,300	8.1%
60541500	Computer Systems Design and Related Services	137,000	137,000	135,700	0	0.0%	1,300	1.0%
60541600	Management, Scientific, and Technical Consulting Services	165,000	162,200	154,300	2,800	1.7%	10,700	6.9%

Source: U.S. Department of Labor, Bureau of Labor Statistics, Current Employment Statistics Program.

Prepared by: Florida Department of Commerce, Bureau of Workforce Statistics and Economic Research.

**NONAGRICULTURAL EMPLOYMENT IN FLORIDA  
STATEWIDE (Not Seasonally Adjusted)**

Released August 18, 2023

Series	Industry Title	July 2023	June 2023	July 2022	Change from		Jul 2022 to Jul 2023 Level	Jul 2022 to Jul 2023 Percent
					Jun 2023 to Jul 2023 Level	Jun 2023 to Jul 2023 Percent		
<b>60550000</b>	<b>Management of Companies and Enterprises</b>	<b>132,600</b>	<b>131,300</b>	<b>127,000</b>	<b>1,300</b>	<b>1.0%</b>	<b>5,600</b>	<b>4.4%</b>
<b>60560000</b>	<b>Administrative and Support and Waste Management and Remediation Services</b>	<b>744,000</b>	<b>750,500</b>	<b>750,500</b>	<b>-6,500</b>	<b>-0.9%</b>	<b>-6,500</b>	<b>-0.9%</b>
60561000	Administrative and Support Services	712,200	719,300	720,000	-7,100	-1.0%	-7,800	-1.1%
60561300	Employment Services	237,800	246,300	262,500	-8,500	-3.5%	-24,700	-9.4%
60561400	Business Support Services	77,500	77,300	79,300	200	0.3%	-1,800	-2.3%
60561500	Travel Arrangement and Reservation Services	27,000	27,100	27,000	-100	-0.4%	0	0.0%
60561600	Investigation and Security Services	76,600	77,600	77,300	-1,000	-1.3%	-700	-0.9%
60561700	Services to Buildings and Dwellings	212,200	209,600	194,800	2,600	1.2%	17,400	8.9%
60562000	Waste Management and Remediation Services	31,800	31,200	30,500	600	1.9%	1,300	4.3%
65000000	Private Education and Health Services	1,471,600	1,455,400	1,374,700	16,200	1.1%	96,900	7.0%
<b>65610000</b>	<b>Private Educational Services</b>	<b>187,300</b>	<b>188,300</b>	<b>173,000</b>	<b>-1,000</b>	<b>-0.5%</b>	<b>14,300</b>	<b>8.3%</b>
65611100	Private Elementary and Secondary Schools	72,600	73,600	62,500	-1,000	-1.4%	10,100	16.2%
65611300	Private Colleges, Universities, and Professional Schools	57,900	58,300	55,400	-400	-0.7%	2,500	4.5%
<b>65620000</b>	<b>Health Care and Social Assistance</b>	<b>1,284,300</b>	<b>1,267,100</b>	<b>1,201,700</b>	<b>17,200</b>	<b>1.4%</b>	<b>82,600</b>	<b>6.9%</b>
65621000	Ambulatory Health Care Services	609,600	599,700	567,700	9,900	1.7%	41,900	7.4%
65621100	Offices of Physicians	253,400	248,700	243,000	4,700	1.9%	10,400	4.3%
65621600	Home Health Care Services	85,500	84,500	75,800	1,000	1.2%	9,700	12.8%
65622000	Hospitals	344,200	342,100	318,900	2,100	0.6%	25,300	7.9%
<b>65623000</b>	<b>Nursing and Residential Care Facilities</b>	<b>177,600</b>	<b>174,800</b>	<b>171,700</b>	<b>2,800</b>	<b>1.6%</b>	<b>5,900</b>	<b>3.4%</b>
65623100	Nursing Care Facilities (Skilled Nursing Facilities)	81,800	80,700	79,400	1,100	1.4%	2,400	3.0%
65623300	Continuing Care Retirement Communities and Assisted Living Facilities for the Elderly	66,400	65,400	62,700	1,000	1.5%	3,700	5.9%
65624000	Social Assistance	152,900	150,500	143,400	2,400	1.6%	9,500	6.6%
70000000	Leisure and Hospitality	1,302,700	1,308,500	1,244,400	-5,800	-0.4%	58,300	4.7%
<b>70710000</b>	<b>Arts, Entertainment, and Recreation</b>	<b>251,800</b>	<b>252,000</b>	<b>239,700</b>	<b>-200</b>	<b>-0.1%</b>	<b>12,100</b>	<b>5.0%</b>
70713000	Amusement, Gambling, and Recreation Industries	206,200	205,200	194,400	1,000	0.5%	11,800	6.1%
70713100	Amusement Parks and Arcades	91,200	90,600	83,800	600	0.7%	7,400	8.8%
<b>70720000</b>	<b>Accommodation and Food Services</b>	<b>1,050,900</b>	<b>1,056,500</b>	<b>1,004,700</b>	<b>-5,600</b>	<b>-0.5%</b>	<b>46,200</b>	<b>4.6%</b>
70721000	Accommodation	190,700	187,900	174,900	2,800	1.5%	15,800	9.0%
70722000	Food Services and Drinking Places	860,200	868,600	829,800	-8,400	-1.0%	30,400	3.7%
80000000	Other Services	353,500	350,800	343,000	2,700	0.8%	10,500	3.1%
80811000	Repair and Maintenance	96,100	92,500	90,000	3,600	3.9%	6,100	6.8%
80811100	Automotive Repair and Maintenance	64,900	62,400	59,400	2,500	4.0%	5,500	9.3%
80812000	Personal and Laundry Services	102,000	104,500	102,100	-2,500	-2.4%	-100	-0.1%
80813000	Religious, Grantmaking, Civic, Professional, and Similar Organizations	155,400	153,800	150,900	1,600	1.0%	4,500	3.0%
90000000	Government	1,040,200	1,045,500	1,016,900	-5,300	-0.5%	23,300	2.3%
<b>90910000</b>	<b>Federal Government</b>	<b>154,900</b>	<b>153,700</b>	<b>149,200</b>	<b>1,200</b>	<b>0.8%</b>	<b>5,700</b>	<b>3.8%</b>
<b>90920000</b>	<b>State Government</b>	<b>230,200</b>	<b>231,300</b>	<b>227,500</b>	<b>-1,100</b>	<b>-0.5%</b>	<b>2,700</b>	<b>1.2%</b>
90921611	State Government Educational Services	125,400	125,300	122,200	100	0.1%	3,200	2.6%
90922000	State Government Excluding Education	104,800	106,000	105,300	-1,200	-1.1%	-500	-0.5%
<b>90930000</b>	<b>Local Government</b>	<b>655,100</b>	<b>660,500</b>	<b>640,200</b>	<b>-5,400</b>	<b>-0.8%</b>	<b>14,900</b>	<b>2.3%</b>
90931611	Local Government Educational Services	267,600	273,900	263,700	-6,300	-2.3%	3,900	1.5%

Source: U.S. Department of Labor, Bureau of Labor Statistics, Current Employment Statistics Program.

Prepared by: Florida Department of Commerce, Bureau of Workforce Statistics and Economic Research.



**NONAGRICULTURAL EMPLOYMENT IN FLORIDA  
STATEWIDE (Not Seasonally Adjusted)**

Released August 18, 2023

Series	Industry Title	July 2023	June 2023	July 2022	Change from			
					Jun 2023 to Jul 2023 Level	Jul 2023 Percent	Jul 2022 to Jul 2023 Level	Jul 2023 Percent
90932000	Local Government excluding Educational Services	387,500	386,600	376,500	900	0.2%	11,000	2.9%

Note: Employment estimates have been rounded to the nearest hundred. Sum of detail may not equal totals due to rounding or the exclusion of certain industries from publication. All data are subject to revision.

STATE OF FLORIDA  
LOCAL AREA UNEMPLOYMENT STATISTICS BY COUNTY  
(NOT SEASONALLY ADJUSTED)

COUNTY	JULY 2023				JUNE 2023				JULY 2022			
	LABOR FORCE	EMPLOY- MENT	UNEMPLOYMENT LEVEL	UNEMPLOYMENT RATE	LABOR FORCE	EMPLOY- MENT	UNEMPLOYMENT LEVEL	UNEMPLOYMENT RATE	LABOR FORCE	EMPLOY- MENT	UNEMPLOYMENT LEVEL	UNEMPLOYMENT RATE
Alachua County	145,547	140,659	4,888	3.4%	144,655	139,959	4,696	3.2%	139,903	135,590	4,313	3.1%
Baker County	13,429	13,011	418	3.1%	13,364	12,975	389	2.9%	12,765	12,390	375	2.9%
Bay County	92,706	90,109	2,597	2.8%	92,632	90,150	2,482	2.7%	90,011	87,563	2,448	2.7%
Bradford County	11,358	10,997	361	3.2%	11,310	10,954	356	3.1%	11,080	10,713	367	3.3%
Brevard County	308,750	299,109	9,641	3.1%	307,170	298,013	9,157	3.0%	298,037	289,352	8,685	2.9%
Broward County	1,102,534	1,068,990	33,544	3.0%	1,097,004	1,064,886	32,118	2.9%	1,069,190	1,038,241	30,949	2.9%
Calhoun County	4,873	4,695	178	3.7%	5,033	4,868	165	3.3%	4,808	4,649	159	3.3%
Charlotte County	79,235	76,401	2,834	3.6%	78,836	76,154	2,682	3.4%	76,616	74,137	2,479	3.2%
Citrus County	51,124	48,761	2,363	4.6%	52,065	49,804	2,261	4.3%	48,634	46,554	2,080	4.3%
Clay County	120,177	116,591	3,586	3.0%	119,730	116,278	3,452	2.9%	114,148	110,968	3,180	2.8%
Collier County	190,029	183,854	6,175	3.2%	189,888	184,199	5,689	3.0%	187,753	182,090	5,663	3.0%
Columbia County	30,310	29,239	1,071	3.5%	30,452	29,426	1,026	3.4%	29,183	28,201	982	3.4%
DeSoto County	13,931	13,422	509	3.7%	14,305	13,819	486	3.4%	13,601	13,142	459	3.4%
Dixie County	5,836	5,610	226	3.9%	5,823	5,609	214	3.7%	5,782	5,594	188	3.3%
Duval County	543,988	525,782	18,206	3.3%	541,703	524,180	17,523	3.2%	517,555	500,760	16,795	3.2%
Escambia County	155,440	150,377	5,063	3.3%	154,517	149,660	4,857	3.1%	151,145	146,471	4,674	3.1%
Flagler County	53,167	51,193	1,974	3.7%	52,889	50,976	1,913	3.6%	50,512	48,771	1,741	3.4%
Franklin County	5,095	4,939	156	3.1%	5,098	4,970	128	2.5%	4,923	4,798	125	2.5%
Gadsden County	19,732	18,961	771	3.9%	19,746	18,998	748	3.8%	19,124	18,377	747	3.9%
Gilchrist County	7,561	7,307	254	3.4%	7,546	7,291	255	3.4%	7,338	7,100	238	3.2%
Glades County	5,213	4,987	226	4.3%	5,275	5,073	202	3.8%	5,030	4,845	185	3.7%
Gulf County	5,721	5,565	156	2.7%	5,716	5,568	148	2.6%	5,558	5,400	158	2.8%
Hamilton County	4,372	4,186	186	4.3%	4,655	4,476	179	3.8%	4,302	4,134	168	3.9%
Hardee County	8,860	8,431	429	4.8%	8,911	8,522	389	4.4%	8,634	8,240	394	4.6%
Hendry County	15,287	14,281	1,006	6.6%	15,374	14,480	894	5.8%	15,236	14,294	942	6.2%
Hernando County	80,882	77,668	3,214	4.0%	80,908	77,777	3,131	3.9%	77,237	74,418	2,819	3.6%
Highlands County	37,026	35,276	1,750	4.7%	37,251	35,548	1,703	4.6%	35,664	34,101	1,563	4.4%
Hillsborough County	842,960	817,085	25,875	3.1%	844,906	819,890	25,016	3.0%	805,643	782,596	23,047	2.9%
Holmes County	7,274	7,016	258	3.5%	7,290	7,051	239	3.3%	7,027	6,799	228	3.2%
Indian River County	69,843	67,218	2,625	3.8%	69,482	66,965	2,517	3.6%	67,999	65,521	2,478	3.6%
Jackson County	16,708	16,080	628	3.8%	16,878	16,266	612	3.6%	16,493	15,946	547	3.3%
Jefferson County	5,920	5,715	205	3.5%	5,876	5,691	185	3.1%	5,736	5,525	211	3.7%
Lafayette County	2,881	2,780	101	3.5%	2,880	2,787	93	3.2%	2,806	2,710	96	3.4%
Lake County	179,054	173,211	5,843	3.3%	178,259	172,717	5,542	3.1%	172,377	167,105	5,272	3.1%
Lee County	391,200	378,700	12,500	3.2%	390,090	378,099	11,991	3.1%	373,036	362,093	10,943	2.9%
Leon County	165,338	159,793	5,545	3.4%	164,222	158,873	5,349	3.3%	159,700	154,705	4,995	3.1%
Levy County	17,391	16,725	666	3.8%	17,333	16,727	606	3.5%	16,988	16,361	627	3.7%
Liberty County	2,706	2,607	99	3.7%	2,730	2,641	89	3.3%	2,600	2,519	81	3.1%
Madison County	8,129	7,865	264	3.2%	8,042	7,789	253	3.1%	7,803	7,549	254	3.3%

Source: U.S. Department of Labor, Bureau of Labor Statistics, Local Area Unemployment Statistics Program, in cooperation with the Florida Department of Commerce, Bureau of Workforce Statistics and Economic Research.

STATE OF FLORIDA  
LOCAL AREA UNEMPLOYMENT STATISTICS BY COUNTY  
(NOT SEASONALLY ADJUSTED)

COUNTY	JULY 2023				JUNE 2023				JULY 2022			
	LABOR FORCE	EMPLOY- MENT	UNEMPLOYMENT LEVEL	UNEMPLOYMENT RATE	LABOR FORCE	EMPLOY- MENT	UNEMPLOYMENT LEVEL	UNEMPLOYMENT RATE	LABOR FORCE	EMPLOY- MENT	UNEMPLOYMENT LEVEL	UNEMPLOYMENT RATE
Manatee County	194,631	188,420	6,211	3.2%	193,551	187,660	5,891	3.0%	187,241	181,688	5,553	3.0%
Marion County	153,113	147,230	5,883	3.8%	152,598	146,928	5,670	3.7%	148,774	143,473	5,301	3.6%
Martin County	79,062	76,655	2,407	3.0%	78,807	76,496	2,311	2.9%	76,081	73,908	2,173	2.9%
Miami-Dade County	1,389,212	1,363,027	26,185	1.9%	1,372,094	1,342,460	29,634	2.2%	1,368,585	1,329,633	38,952	2.8%
Monroe County	51,945	50,937	1,008	1.9%	51,546	50,580	966	1.9%	49,387	48,487	900	1.8%
Nassau County	47,412	46,057	1,355	2.9%	47,226	45,910	1,316	2.8%	45,080	43,905	1,175	2.6%
Okaloosa County	109,803	106,872	2,931	2.7%	108,813	106,037	2,776	2.6%	106,275	103,626	2,649	2.5%
Okeechobee County	17,966	17,334	632	3.5%	18,126	17,506	620	3.4%	17,517	16,948	569	3.2%
Orange County	829,150	804,042	25,108	3.0%	825,779	801,584	24,195	2.9%	799,022	775,670	23,352	2.9%
Osceola County	206,608	199,300	7,308	3.5%	205,825	198,707	7,118	3.5%	199,032	192,221	6,811	3.4%
Palm Beach County	786,596	761,008	25,588	3.3%	780,364	756,069	24,295	3.1%	765,040	741,493	23,547	3.1%
Pasco County	271,409	262,045	9,364	3.5%	271,666	262,591	9,075	3.3%	259,204	251,115	8,089	3.1%
Pinellas County	535,738	520,326	15,412	2.9%	535,735	521,237	14,498	2.7%	512,154	498,527	13,627	2.7%
Polk County	348,457	334,812	13,645	3.9%	347,505	334,424	13,081	3.8%	338,282	325,954	12,328	3.6%
Putnam County	27,717	26,521	1,196	4.3%	27,975	26,830	1,145	4.1%	27,449	26,299	1,150	4.2%
Santa Rosa County	91,433	88,610	2,823	3.1%	90,998	88,265	2,733	3.0%	88,846	86,302	2,544	2.9%
Sarasota County	204,686	198,177	6,509	3.2%	203,122	196,988	6,134	3.0%	197,128	191,440	5,688	2.9%
Seminole County	276,507	268,297	8,210	3.0%	275,265	267,434	7,831	2.8%	266,173	258,918	7,255	2.7%
St. Johns County	158,268	153,995	4,273	2.7%	158,073	153,933	4,140	2.6%	150,429	146,779	3,650	2.4%
St. Lucie County	162,154	156,169	5,985	3.7%	161,989	156,187	5,802	3.6%	155,366	149,840	5,526	3.6%
Sumter County	39,500	37,786	1,714	4.3%	39,338	37,752	1,586	4.0%	37,293	35,785	1,508	4.0%
Suwannee County	18,014	17,357	657	3.6%	18,306	17,682	624	3.4%	17,446	16,853	593	3.4%
Taylor County	8,411	8,136	275	3.3%	8,431	8,155	276	3.3%	8,165	7,886	279	3.4%
Union County	4,596	4,444	152	3.3%	4,603	4,461	142	3.1%	4,402	4,258	144	3.3%
Volusia County	279,797	270,441	9,356	3.3%	278,168	269,165	9,003	3.2%	266,360	257,855	8,505	3.2%
Wakulla County	16,545	16,076	469	2.8%	16,466	15,996	470	2.9%	15,956	15,529	427	2.7%
Walton County	37,104	36,081	1,023	2.8%	36,715	35,755	960	2.6%	36,018	35,100	918	2.5%
Washington County	10,213	9,866	347	3.4%	10,187	9,847	340	3.3%	9,814	9,485	329	3.4%
Florida (Not Seasonally Adjusted)	11,178,000	10,835,000	342,000	3.1%	11,129,000	10,797,000	332,000	3.0%	10,794,000	10,469,000	325,000	3.0%
Florida (Seasonally Adjusted)	11,081,000	10,785,000	295,000	2.7%	11,039,000	10,749,000	290,000	2.6%	10,801,000	10,504,000	297,000	2.7%
United States (Not Seasonally Adjusted)	168,354,000	161,982,000	6,372,000	3.8%	167,910,000	161,559,000	6,351,000	3.8%	165,321,000	159,067,000	6,255,000	3.8%
United States (Seasonally Adjusted)	167,103,000	161,262,000	5,841,000	3.5%	166,951,000	160,994,000	5,957,000	3.6%	163,990,000	158,272,000	5,718,000	3.5%

Released: Friday, August 18, 2023

NOTE: Items may not add to totals or compute to displayed percentages due to rounding. All data are subject to revision.

Source: U.S. Department of Labor, Bureau of Labor Statistics, Local Area Unemployment Statistics Program, in cooperation with the Florida Department of Commerce, Bureau of Workforce Statistics and Economic Research.

STATE OF FLORIDA  
 LOCAL AREA UNEMPLOYMENT STATISTICS BY METROPOLITAN STATISTICAL AREA (MSA) AND METROPOLITAN DIVISION (MD)  
 (NOT SEASONALLY ADJUSTED)

MSA/MD	JULY 2023				JUNE 2023				JULY 2022			
	LABOR FORCE	EMPLOY- MENT	UNEMPLOYMENT LEVEL	UNEMPLOYMENT RATE	LABOR FORCE	EMPLOY- MENT	UNEMPLOYMENT LEVEL	UNEMPLOYMENT RATE	LABOR FORCE	EMPLOY- MENT	UNEMPLOYMENT LEVEL	UNEMPLOYMENT RATE
Cape Coral-Fort Myers MSA	391,200	378,700	12,500	3.2%	390,090	378,099	11,991	3.1%	373,036	362,093	10,943	2.9%
Crestview-Fort Walton Beach-Destin MSA	146,907	142,953	3,954	2.7%	145,528	141,792	3,736	2.6%	142,293	138,726	3,567	2.5%
Deltona-Daytona Beach-Ormond Beach MSA	332,964	321,634	11,330	3.4%	331,057	320,141	10,916	3.3%	316,872	306,626	10,246	3.2%
Gainesville MSA	153,108	147,966	5,142	3.4%	152,201	147,250	4,951	3.3%	147,241	142,690	4,551	3.1%
Homosassa Springs MSA	51,124	48,761	2,363	4.6%	52,065	49,804	2,261	4.3%	48,634	46,554	2,080	4.3%
Jacksonville MSA	883,274	855,436	27,838	3.2%	880,096	853,276	26,820	3.0%	839,977	814,802	25,175	3.0%
Lakeland-Winter Haven MSA	348,457	334,812	13,645	3.9%	347,505	334,424	13,081	3.8%	338,282	325,954	12,328	3.6%
Miami-Fort Lauderdale-West Palm Beach MSA	3,278,342	3,193,025	85,317	2.6%	3,249,462	3,163,415	86,047	2.6%	3,202,815	3,109,367	93,448	2.9%
Fort Lauderdale-Pompano Beach-Deerfield Beach MD	1,102,534	1,068,990	33,544	3.0%	1,097,004	1,064,886	32,118	2.9%	1,069,190	1,038,241	30,949	2.9%
Miami-Miami Beach-Kendall MD	1,389,212	1,363,027	26,185	1.9%	1,372,094	1,342,460	29,634	2.2%	1,368,585	1,329,633	38,952	2.8%
West Palm Beach-Boca Raton-Delray Beach MD	786,596	761,008	25,588	3.3%	780,364	756,069	24,295	3.1%	765,040	741,493	23,547	3.1%
Naples-Immokalee-Marco Island MSA	190,029	183,854	6,175	3.2%	189,888	184,199	5,689	3.0%	187,753	182,090	5,663	3.0%
North Port-Sarasota-Bradenton MSA	399,317	386,597	12,720	3.2%	396,673	384,648	12,025	3.0%	384,369	373,128	11,241	2.9%
Ocala MSA	153,113	147,230	5,883	3.8%	152,598	146,928	5,670	3.7%	148,774	143,473	5,301	3.6%
Orlando-Kissimmee-Sanford MSA	1,491,319	1,444,850	46,469	3.1%	1,485,128	1,440,442	44,686	3.0%	1,436,604	1,393,914	42,690	3.0%
Palm Bay-Melbourne-Titusville MSA	308,750	299,109	9,641	3.1%	307,170	298,013	9,157	3.0%	298,037	289,352	8,685	2.9%
Panama City MSA	98,427	95,674	2,753	2.8%	98,348	95,718	2,630	2.7%	95,569	92,963	2,606	2.7%
Pensacola-Ferry Pass-Brent MSA	246,873	238,987	7,886	3.2%	245,515	237,925	7,590	3.1%	239,991	232,773	7,218	3.0%
Port St. Lucie MSA	241,216	232,824	8,392	3.5%	240,796	232,683	8,113	3.4%	231,447	223,748	7,699	3.3%
Punta Gorda MSA	79,235	76,401	2,834	3.6%	78,836	76,154	2,682	3.4%	76,616	74,137	2,479	3.2%
Sebastian-Vero Beach MSA	69,843	67,218	2,625	3.8%	69,482	66,965	2,517	3.6%	67,999	65,521	2,478	3.6%
Sebring MSA	37,026	35,276	1,750	4.7%	37,251	35,548	1,703	4.6%	35,664	34,101	1,563	4.4%
Tallahassee MSA	207,535	200,545	6,990	3.4%	206,310	199,558	6,752	3.3%	200,516	194,136	6,380	3.2%
Tampa-St. Petersburg-Clearwater MSA	1,730,989	1,677,124	53,865	3.1%	1,733,215	1,681,495	51,720	3.0%	1,654,238	1,606,656	47,582	2.9%
The Villages MSA	39,500	37,786	1,714	4.3%	39,338	37,752	1,586	4.0%	37,293	35,785	1,508	4.0%
Florida (Not Seasonally Adjusted)	11,178,000	10,835,000	342,000	3.1%	11,129,000	10,797,000	332,000	3.0%	10,794,000	10,469,000	325,000	3.0%
Florida (Seasonally Adjusted)	11,081,000	10,785,000	295,000	2.7%	11,039,000	10,749,000	290,000	2.6%	10,801,000	10,504,000	297,000	2.7%
United States (Not Seasonally Adjusted)	168,354,000	161,982,000	6,372,000	3.8%	167,910,000	161,559,000	6,351,000	3.8%	165,321,000	159,067,000	6,255,000	3.8%
United States (Seasonally Adjusted)	167,103,000	161,262,000	5,841,000	3.5%	166,951,000	160,994,000	5,957,000	3.6%	163,990,000	158,272,000	5,718,000	3.5%

Released: Friday, August 18, 2023

NOTE: Items may not add to totals or compute to displayed percentages due to rounding. All data are subject to revision.

Source: U.S. Department of Labor, Bureau of Labor Statistics, Local Area Unemployment Statistics Program, in cooperation with the Florida Department of Commerce, Bureau of Workforce Statistics and Economic Research.

STATE OF FLORIDA  
COUNTIES RANKED BY UNEMPLOYMENT RATE  
(NOT SEASONALLY ADJUSTED)  
JULY 2023 (PRELIMINARY)

1	Hendry County	6.6%
2	Hardee County	4.8%
3	Highlands County	4.7%
4	Citrus County	4.6%
5	Glades County	4.3%
5	Hamilton County	4.3%
5	Putnam County	4.3%
5	Sumter County	4.3%
9	Hernando County	4.0%
10	Dixie County	3.9%
10	Gadsden County	3.9%
10	Polk County	3.9%
13	Indian River County	3.8%
13	Jackson County	3.8%
13	Levy County	3.8%
13	Marion County	3.8%
	<b>United States</b>	<b>3.8%</b>
17	Calhoun County	3.7%
17	DeSoto County	3.7%
17	Flagler County	3.7%
17	Liberty County	3.7%
17	St. Lucie County	3.7%
22	Charlotte County	3.6%
22	Suwannee County	3.6%
24	Columbia County	3.5%
24	Holmes County	3.5%
24	Jefferson County	3.5%
24	Lafayette County	3.5%
24	Okeechobee County	3.5%
24	Osceola County	3.5%
24	Pasco County	3.5%
31	Alachua County	3.4%
31	Gilchrist County	3.4%
31	Leon County	3.4%
31	Washington County	3.4%
35	Duval County	3.3%
35	Escambia County	3.3%
35	Lake County	3.3%
35	Palm Beach County	3.3%
35	Taylor County	3.3%
35	Union County	3.3%

STATE OF FLORIDA  
COUNTIES RANKED BY UNEMPLOYMENT RATE  
(NOT SEASONALLY ADJUSTED)  
JULY 2023 (PRELIMINARY)

35	Volusia County	3.3%
42	Bradford County	3.2%
42	Collier County	3.2%
42	Lee County	3.2%
42	Madison County	3.2%
42	Manatee County	3.2%
42	Sarasota County	3.2%
48	Baker County	3.1%
48	Brevard County	3.1%
48	Franklin County	3.1%
48	Hillsborough County	3.1%
48	Santa Rosa County	3.1%
	<b>Florida</b>	<b>3.1%</b>
53	Broward County	3.0%
53	Clay County	3.0%
53	Martin County	3.0%
53	Orange County	3.0%
53	Seminole County	3.0%
58	Nassau County	2.9%
58	Pinellas County	2.9%
60	Bay County	2.8%
60	Wakulla County	2.8%
60	Walton County	2.8%
63	Gulf County	2.7%
63	Okaloosa County	2.7%
63	St. Johns County	2.7%
66	Miami-Dade County	1.9%
66	Monroe County	1.9%

Source: U.S. Department of Labor, Bureau of Labor Statistics, Local Area Unemployment Statistics Program, in cooperation with the Florida Department of Commerce, Bureau of Workforce Statistics and Economic Research.  
Released: August 18, 2023

NOTE: All data are subject to revision.

STATE OF FLORIDA  
METROPOLITAN STATISTICAL AREAS (MSAs) AND METROPOLITAN DIVISIONS (MDs)  
RANKED BY UNEMPLOYMENT RATE  
(NOT SEASONALLY ADJUSTED)  
JULY 2023 (PRELIMINARY)

1	Sebring MSA	4.7%
2	Homosassa Springs MSA	4.6%
3	The Villages MSA	4.3%
4	Lakeland-Winter Haven MSA	3.9%
5	Ocala MSA	3.8%
5	Sebastian-Vero Beach MSA	3.8%
	<b>United States</b>	<b>3.8%</b>
7	Punta Gorda MSA	3.6%
8	Port St. Lucie MSA	3.5%
9	Deltona-Daytona Beach-Ormond Beach MSA	3.4%
9	Gainesville MSA	3.4%
9	Tallahassee MSA	3.4%
12	West Palm Beach-Boca Raton-Delray Beach MD	3.3%
13	Cape Coral-Fort Myers MSA	3.2%
13	Jacksonville MSA	3.2%
13	Naples-Immokalee-Marco Island MSA	3.2%
13	North Port-Sarasota-Bradenton MSA	3.2%
13	Pensacola-Ferry Pass-Brent MSA	3.2%
18	Orlando-Kissimmee-Sanford MSA	3.1%
18	Palm Bay-Melbourne-Titusville MSA	3.1%
18	Tampa-St. Petersburg-Clearwater MSA	3.1%
	<b>Florida</b>	<b>3.1%</b>
21	Fort Lauderdale-Pompano Beach-Deerfield Beach MD	3.0%
22	Panama City MSA	2.8%
23	Crestview-Fort Walton Beach-Destin MSA	2.7%
24	Miami-Miami Beach-Kendall MD	1.9%

Released: Friday, August 18, 2023

NOTE: All data are subject to revision.

TOTAL NONAGRICULTURAL EMPLOYMENT  
FLORIDA (Not Seasonally Adjusted)

Area	July 2023	June 2023	July 2022	Over-the-Month Change		Over-the-Year Change	
				Level	Percent	Level	Percent
Statewide	9,655,700	9,628,200	9,339,600	27,500	0.3%	316,100	3.4%
Cape Coral-Fort Myers MSA	306,900	306,500	295,300	400	0.1%	11,600	3.9%
Crestview-Fort Walton Beach-Destin MSA	132,900	131,900	129,900	1,000	0.8%	3,000	2.3%
Deltona-Daytona Beach-Ormond Beach MSA	224,600	223,900	214,900	700	0.3%	9,700	4.5%
Fort Lauderdale-Pompano Beach-Deerfield Beach MD	896,500	894,100	879,600	2,400	0.3%	16,900	1.9%
Gainesville MSA	151,500	150,500	147,300	1,000	0.7%	4,200	2.9%
Homosassa Springs MSA	35,300	36,200	33,900	-900	-2.5%	1,400	4.1%
Jacksonville MSA	802,000	799,300	769,400	2,700	0.3%	32,600	4.2%
Lakeland-Winter Haven MSA	266,000	266,200	261,200	-200	-0.1%	4,800	1.8%
Miami-Ft. Lauderdale-West Palm Beach MSA	2,863,100	2,851,400	2,786,000	11,700	0.4%	77,100	2.8%
Miami-Miami Beach-Kendall MD	1,292,400	1,286,900	1,244,900	5,500	0.4%	47,500	3.8%
Naples-Immokalee-Marco Island MSA	162,500	162,800	162,100	-300	-0.2%	400	0.2%
North Port-Sarasota-Bradenton MSA	334,000	332,500	324,300	1,500	0.5%	9,700	3.0%
Ocala MSA	117,700	117,300	115,300	400	0.3%	2,400	2.1%
Orlando-Kissimmee-Sanford MSA	1,429,500	1,425,000	1,390,300	4,500	0.3%	39,200	2.8%
Palm Bay-Melbourne-Titusville MSA	247,800	247,000	241,500	800	0.3%	6,300	2.6%
Panama City MSA	88,100	88,300	86,600	-200	-0.2%	1,500	1.7%
Pensacola-Ferry Pass-Brent MSA	197,200	196,600	193,500	600	0.3%	3,700	1.9%
Port St. Lucie MSA	169,500	169,700	163,500	-200	-0.1%	6,000	3.7%
Punta Gorda MSA	54,600	54,600	53,200	0	0.0%	1,400	2.6%
Sebastian-Vero Beach MSA	56,900	56,900	56,000	0	0.0%	900	1.6%
Sebring MSA	27,100	27,200	26,200	-100	-0.4%	900	3.4%
Tallahassee MSA	195,000	193,800	189,900	1,200	0.6%	5,100	2.7%
Tampa-St. Petersburg-Clearwater MSA	1,520,800	1,524,600	1,467,200	-3,800	-0.2%	53,600	3.7%
The Villages MSA	39,300	39,300	37,300	0	0.0%	2,000	5.4%
West Palm Beach-Boca Raton-Delray Beach MD	674,200	670,400	661,500	3,800	0.6%	12,700	1.9%

Note: Employment estimates have been rounded to the nearest hundred. Sum of detail may not equal totals due to rounding or the exclusion of certain industries from publication. All data are subject to revision. August 18, 2023.



**Total Nonagricultural Employment**  
**Florida and Selected Metropolitan Statistical Areas (MSAs) and Metropolitan Divisions (MDs)**

**Seasonally Adjusted**

Area	July	June	July	Over-the-Month		Over-the-Year	
	2023	2023	2022	Level	Percent	Level	Percent
Florida	9,771,600	9,727,100	9,471,000	44,500	0.5	300,600	3.2
Cape Coral-Fort Myers MSA	313,100	311,900	301,900	1,200	0.4	11,200	3.7
Crestview-Fort Walton Beach-Destin MSA	131,600	131,200	127,900	400	0.3	3,700	2.9
Deltona-Daytona Beach-Ormond Beach MSA	226,900	226,100	216,800	800	0.4	10,100	4.7
Gainesville MSA	155,200	154,900	151,300	300	0.2	3,900	2.6
Homosassa Springs MSA	36,400	36,300	34,900	100	0.3	1,500	4.3
Jacksonville MSA	808,000	802,800	773,400	5,200	0.6	34,600	4.5
Lakeland-Winter Haven MSA	271,200	270,700	266,600	500	0.2	4,600	1.7
Miami-Ft. Lauderdale-West Palm Beach MSA	2,892,100	2,881,200	2,815,000	10,900	0.4	77,100	2.7
Fort Lauderdale-Pompano Beach-Deerfield Beach MD	905,900	902,100	891,600	3,800	0.4	14,300	1.6
Miami-Miami Beach-Kendall MD	1,304,000	1,301,100	1,260,700	2,900	0.2	43,300	3.4
West Palm Beach-Boca Raton-Delray Beach MD	683,200	680,400	670,900	2,800	0.4	12,300	1.8
Naples-Immokalee-Marco Island MSA	166,700	165,700	167,200	1,000	0.6	-500	-0.3
North Port-Sarasota-Bradenton MSA	337,700	335,600	329,100	2,100	0.6	8,600	2.6
Ocala MSA	119,100	118,800	116,700	300	0.3	2,400	2.1
Orlando-Kissimmee-Sanford MSA	1,443,600	1,441,700	1,399,700	1,900	0.1	43,900	3.1
Palm Bay-Melbourne-Titusville MSA	249,300	248,600	242,500	700	0.3	6,800	2.8
Panama City MSA	87,500	87,300	85,900	200	0.2	1,600	1.9
Pensacola -Ferry Pass-Brent MSA	198,400	198,100	193,700	300	0.2	4,700	2.4
Port St. Lucie MSA	171,900	171,700	166,600	200	0.1	5,300	3.2
Punta Gorda MSA	55,700	55,500	54,300	200	0.4	1,400	2.6
Sebastian-Vero Beach MSA	57,800	57,600	57,200	200	0.3	600	1.0
Sebring MSA	27,700	27,500	27,100	200	0.7	600	2.2
Tallahassee MSA	199,600	198,300	194,300	1,300	0.7	5,300	2.7
Tampa - St. Petersburg - Clearwater MSA	1,534,700	1,535,100	1,484,300	-400	*	50,400	3.4
The Villages MSA	40,400	39,700	38,300	700	1.8	2,100	5.5

Released: August 18, 2023

p = preliminary, r = revised

\* - less than 0.1 percent

Source: U.S. Department of Labor, Bureau of Labor Statistics, Current Employment Statistics Program.

Prepared by: Florida Department of Economic Opportunity, Bureau of Workforce Statistics and Economic Research.