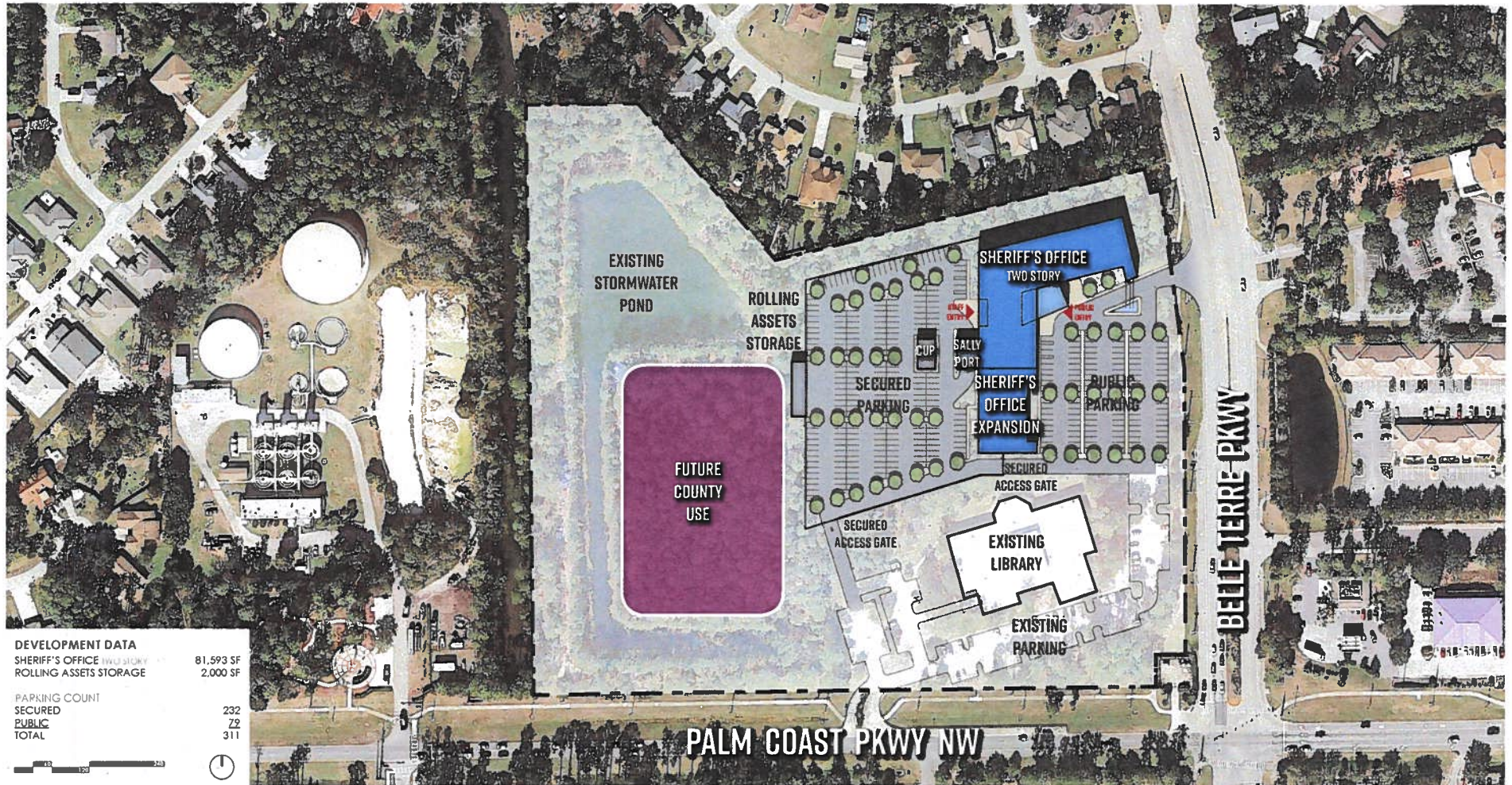


YOUR SITE

- 2500 Palm Coast Parkway Northwest
Palm Coast, FL 32137
Parcel ID: 07-11-31-7013-RPOA0-0020
- **Approximately 5 acres for proposed Sheriff's Office program**
- **Existing library will remain on-site and fully operational**
- Areas of potential development & expansion for future needs
- Tree survey coordination with development
- Environmental / geotechnical factors
- Stormwater considerations
- Site grading to work with existing topographic condition
- Available existing utilities
- Land development regulations
 - Setbacks 25' (front), 10'(side), 10'(rear)
 - PSP zoning and adjacent residential life
 - Parking requirements 1:250
 - ISR: 0.7 max
 - Building Height: 100' max
 - FAR: 0.3 max



FLAGLER COUNTY S.O. MASTER PLAN | CONCEPT A: WITH EXPANDED DEVELOPMENT



DEVELOPMENT DATA

SHERIFF'S OFFICE TWO STORY	81,593 SF
ROLLING ASSETS STORAGE	2,000 SF

PARKING COUNT

SECURED	232
PUBLIC	79
TOTAL	311



FLAGLER COUNTY S.O. MASTER PLAN | CONCEPT B: WITH EXPANDED DEVELOPMENT

