

**FLAGLER COUNTY BOARD OF COUNTY COMMISSIONERS
GENERAL BUSINESS / AGENDA ITEM # 8a**

SUBJECT: New Sheriff Operations Center Discussion

DATE OF MEETING: December 7, 2020

OVERVIEW/SUMMARY: Staff is seeking approval and direction regarding the advancement of the new Sheriff's Operation Center. Architects Design Group and Ajax Building Corporation to provide an update on the status of this project and seek Board approval to move forward towards completion.

FUNDING INFORMATION: Funding will for construction will be via bond proceeds to be brought forth at a future meeting for approval.

DEPARTMENT CONTACT: Holly Durrance, Purchasing Manager (386) 313-4063

RECOMMENDATION: Request the Board approval and direction to advance the Design and Construction of the New Sheriff Operations Center, based on information presented from Architects Design Group (ADG) and Ajax Building Corporation.

ATTACHMENTS:

1. Presentation from Architects Design Group (ADG) and Ajax Building Corporation

FLAGLER COUNTY SHERIFF'S OFFICE DISTRICT 3 ADMINISTRATION & OPERATIONS COMPLEX



EXISTING CONDITIONS

Sheriff's Office current working conditions

- What was once centralized is now located in four locations and on multiple floors co-mingled within other Constitutional & County Operation:
 - Purchasing/Supply – located in Jail Administration Building
 - Training Section located in Jail Administration Building
 - CSI/Evidence – located in temporary facility on Justice Lane
 - Investigative Services, Office of the Sheriff, Human Resources, Victim Advocates, etc. located in two buildings on multiple floors
 - 1st, 2nd and 3rd floors of Courthouse co-mingled among State Attorney, Judges and Clerk of Court offices
 - 1st floor GSB building at Tax Collector's office.
 - 3rd floor GSB building at County Administrator's office.

EXISTING CONDITIONS - PURCHASING



EXISTING CONDITIONS - INVESTIGATIONS



PROJECT HISTORY

- Sheriff's Office Vacated Existing Building 05.29.2018
- Original Space Needs Assessment08.30.2019
- RSQ Advertisement11.01.2019
- Project awarded to ADG01.27.2020
- ADG contracted / Notice to proceed07.16.2020
- Schematic Design Submission10.16.2020
- Cost Estimate Issued..... 11.05.2020
- **County Commission Meeting12.07.2020**

ARCHITECTS DESIGN GROUP

- National leaders in public safety architecture
- **350+ Public safety projects**
- Understanding the unique needs of the Flagler County Sheriff's Office
- Experts in **IAPE, CALEA accreditation, and CPTED standards**
- Completed multiple critical / essential facilities and experts with these standards
- **50+ public safety projects utilizing the CMAR delivery method**

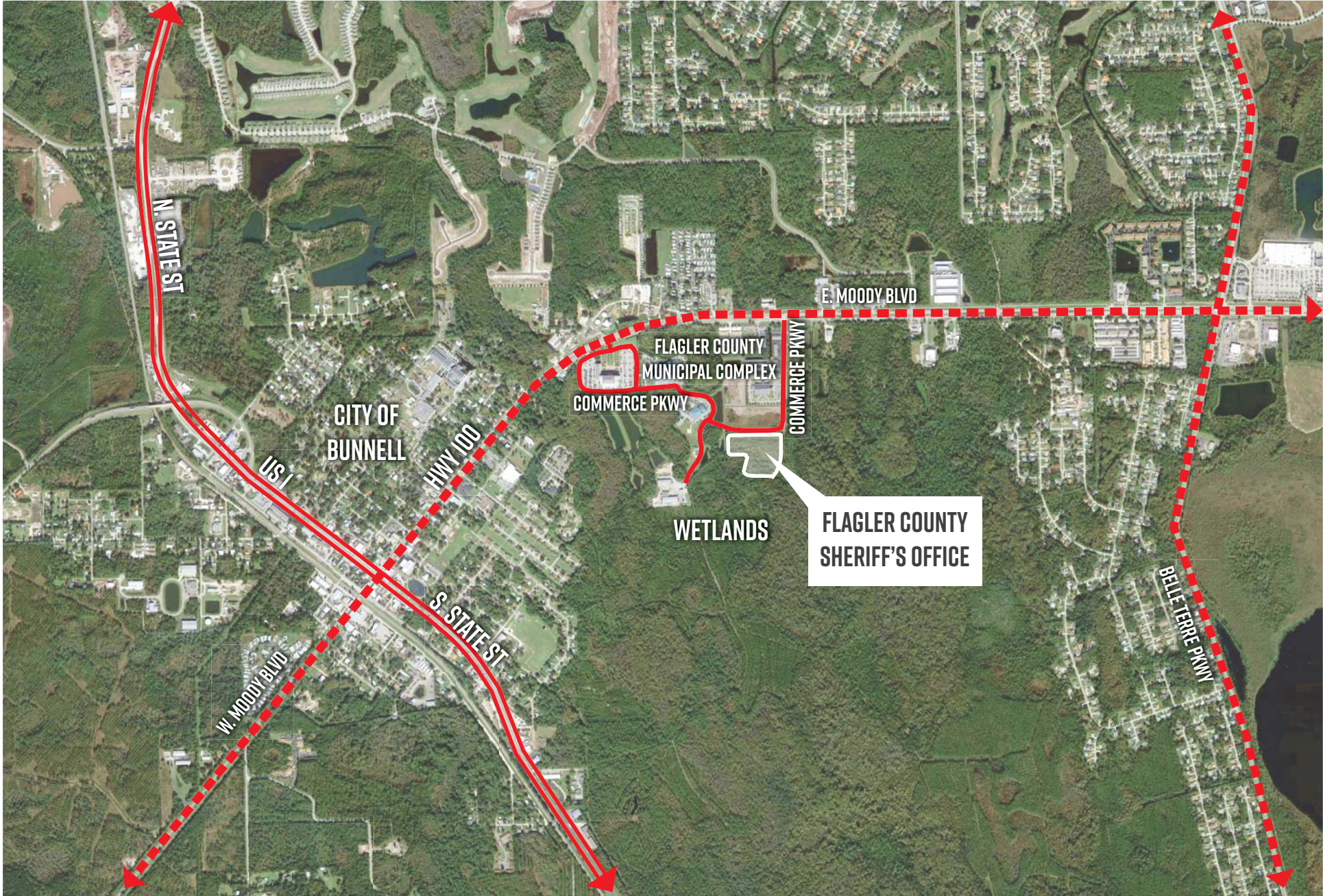
ADG'S NATIONAL EXPERIENCE

- Alpharetta Public Safety Facility
- Alachua County Sheriff's Complex
- Altamonte Springs Public Safety Complex
- Auburndale Police Facility
- Aurora Police and Fire Department Joint Training Facility
- Bal Harbour Police Facility
- Baytown Police Headquarters
- Belton Public Safety Facility Renovation
- Boca Raton Police Services Facilities
- Boca Raton Public Safety Information Management Center
- Boynton Beach Police Facility
- Bradford County Public Safety Facility
- Brentwood Police Headquarters Preliminary Spatial Needs Assessment
- Brunswick Police Department
- Cape Canaveral Police and Municipal Facilities
- Cape Coral Police Headquarters
- Cedar Falls Public Safety Facility
- Cedar Park Police Headquarters Renovation
- Clermont Police Department Headquarters
- Cobb County Police Headquarters
- Cobb County Training Facility
- Cocoa Beach Public Safety Complex
- Cookeville Police Headquarters
- Corinth Public Safety Facility
- Covington Police and Courts Facility
- Daytona Beach Shores Public Safety Complex
- DeSoto Police Training Facility
- Elmira Police Facility
- Eastern Florida State College Public Safety Training Center
- Frankfort Public Safety Facility
- Ft. Lauderdale Police Facility
- Gainesville Police Facility Renovation
- Gainesville Police Department Training Facility
- Georgetown Public Safety Operations and Training Complex
- Granbury Police Headquarters
- Grand Prairie / Irving Public Safety Training Facility
- Greene County Public Safety Coordination Center
- Gulfport Public Safety Facility
- Highlands County Sheriff's Law Enforcement
- Highlands County Sheriff Detention Center Reconfiguration
- Hillsborough Public Safety Operations Facility
- Indian River County Sheriff's Office
- Johnston Public Safety Complex
- Kissimmee Police Training Facility
- Largo EOC and Police Training Facility
- Lebanon Police Department
- Linn County Sheriff's Office
- Lowell Police Headquarters
- Lynchburg Police and Courts Spatial Needs Assessment
- Manchester Police Department Headquarters
- Mansfield Police Headquarters
- Martin County Public Safety Facility
- Miami Fire Department USAR Facility Master Plan
- Minneola Police and Fire Facilities
- MNCPPC National Division Headquarters
- Mount Dora Public Safety Facility Renovation
- Niceville Police Headquarters
- Northglenn Police and City Hall Complex
- Ocoee Police Facility
- Orange County Sheriff Sector II
- Orlando Police Department Headquarters
- Orlando Police Department Firing Range and Training Facility
- Owensboro Police Facility
- Palmetto Police Headquarters
- Pembroke Pines Police Headquarters
- Pinellas Park Police Facility
- Plantation Firing Range
- Polk County Sheriff District Command Center
- Port St. Lucie Police and EOC
- Port Fourchon Public Safety Center
- Provincetown Public Safety Facility
- Riviera Beach Police Facility
- River Vale Police Department
- Rochester Police Department
- Rockledge Police Department
- Sanford Public Safety Complex
- Sarasota Police Facility
- Sarasota County Public Safety Center
- Silverton Police Department
- Springfield Police Headquarters
- Spring Hill Police Headquarters
- St. Charles County Evidence Facility
- Sunrise Public Safety and Training Complex
- Tallahassee Police Headquarters Spatial Needs Assessment
- Waukee Public Safety Facility
- Wells Public Safety Facility
- Wildwood Police Department
- Williamson County Public Safety Facility
- Winter Haven Police Facility
- Winter Park Public Safety and Training Facility
- Winter Springs Police and EOC Facility
- Wylie Public Safety Facility

PROJECT INFORMATION

Located near other Flagler County government functions off of East Moody Blvd. (Highway 100) and Commerce Parkway within the City of Bunnell city limits.

- **Site Area:** 8.41 acres
- **Original 2019 Space Needs Assessment**81,336 SF
- **Current Space Needs**
 - Building Size51,615 SF
 - Add Alternate - Purchasing & Logistics Building6,298 SF
 - Future Main Building Expansion30,000 SF



Site Location Map







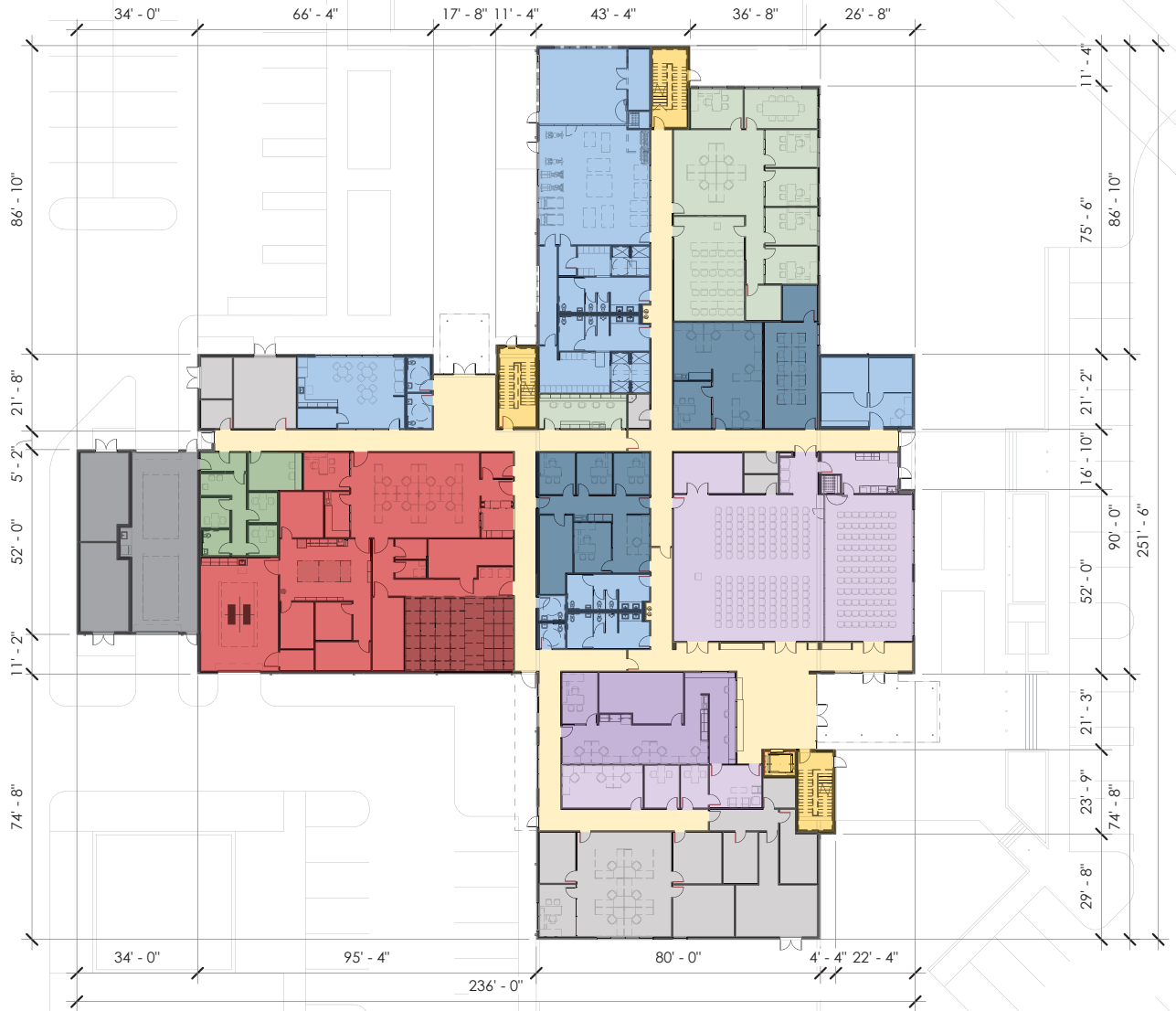
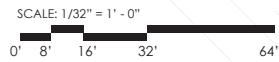




LEGEND
FIRST FLOOR - 32,367 GSF

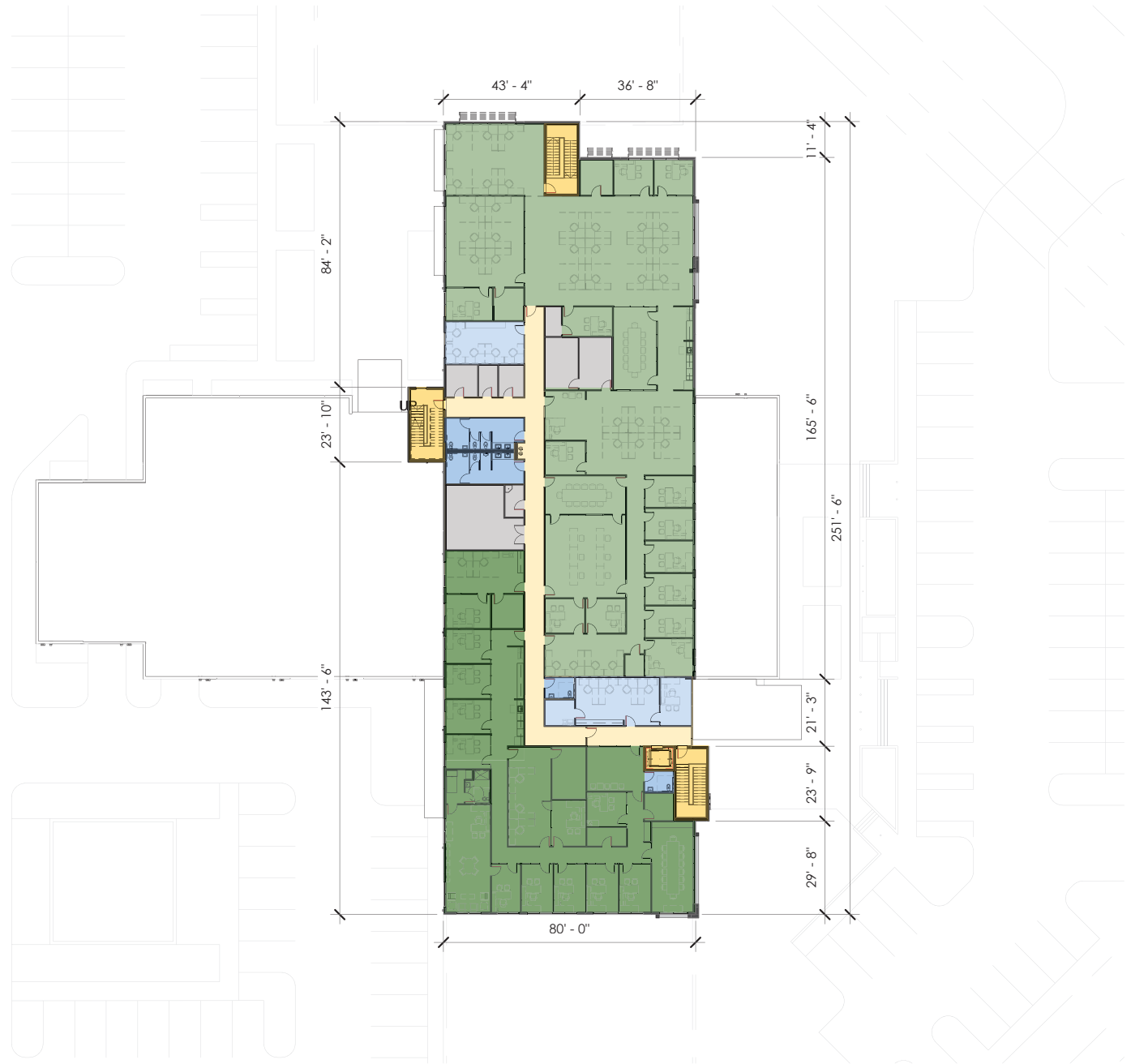
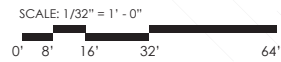


- PUBLIC ACCESS AREAS
- RECORDS
- OFFICE OF THE SHERIFF
- INVESTIGATIVE SERVICES
- ORGANIZATIONAL SERVICES
- COMMUNITY POLICING
- CSI & EVIDENCE
- SALLY PORT
- TRAINING & HUMAN RESOURCES
- FACILITY SUPPORT SPACES
- I.T. & FACILITY FUNCTIONAL SPACES
- CIRCULATION
- VERTICAL CIRCULATION



LEGEND 
 SECOND FLOOR - 19,248 GSF

-  PUBLIC ACCESS AREAS
-  RECORDS
-  OFFICE OF THE SHERIFF
-  INVESTIGATIVE SERVICES
-  ORGANIZATIONAL SERVICES
-  COMMUNITY POLICING
-  CSI & EVIDENCE
-  SALLY PORT
-  TRAINING & HUMAN RESOURCES
-  FACILITY SUPPORT SPACES
-  I.T. & FACILITY FUNCTIONAL SPACES
-  CIRCULATION
-  VERTICAL CIRCULATION



LEGEND



- PUBLIC ACCESS AREAS
- RECORDS
- OFFICE OF THE SHERIFF
- INVESTIGATIVE SERVICES
- ORGANIZATIONAL SERVICES
- COMMUNITY POLICING
- CSI & EVIDENCE
- SALLY PORT
- TRAINING & HUMAN RESOURCES
- FACILITY SUPPORT SPACES
- I.T. & FACILITY FUNCTIONAL SPACES
- CIRCULATION
- VERTICAL CIRCULATION



COST MANAGEMENT RECAP



Report includes Taxes & Insurance.

9:52:41AM

11/13/2020

Total Sub 01 GENERAL CONDITIONS	\$1,491,475
Total Sub 02 SHERIFF'S OFFICE	\$11,815,229
Total Sub 03 CENTRAL UTILITY PLANT	\$434,257
Total Sub 05 SITEWORK	\$2,339,159
Total Sub 99 BONDS, INSURANCE & FEES	\$2,942,141

Estimated Cost

Construction Cost - Base Bid	\$19,022,261
Cost per Square Foot	\$368/SF

Estimate Includes:

- Value Management Reduction \$1,357,000
- Contingency & Inflation Allowance \$2,035,290

Estimate Does Not Include:

- ADG & Engineering Fees\$1,100,000
- Furniture, Fixtures & Equipment\$700,000
- Add Alternate - Purchasing & Logistics BuildingTBD

UNDERSTANDING THE COST ESTIMATE

- **Size and Condition of the project site.**
 - Deep auger cast foundations due to loose soils.
 - 3'-0" of additional site fill due to high water table.
- Size, quality & performance characteristics of interior & exterior building structure and elements.
- **Code change requirements, switching to FBC 2020 on January 1st 2021**
- **Changing Marketplace conditions for materials & labor costs.**
 - Material shortages due to demand or production changes
 - Availability of skilled and non-skilled labor.
- **Project Cost effected by inflation.**
- Man made & environmental threats have changed, requiring a more secured & reinforced building & site.