

CONTACT: Bureau of Workforce Statistics
and Economic Research
(850) 245-7205

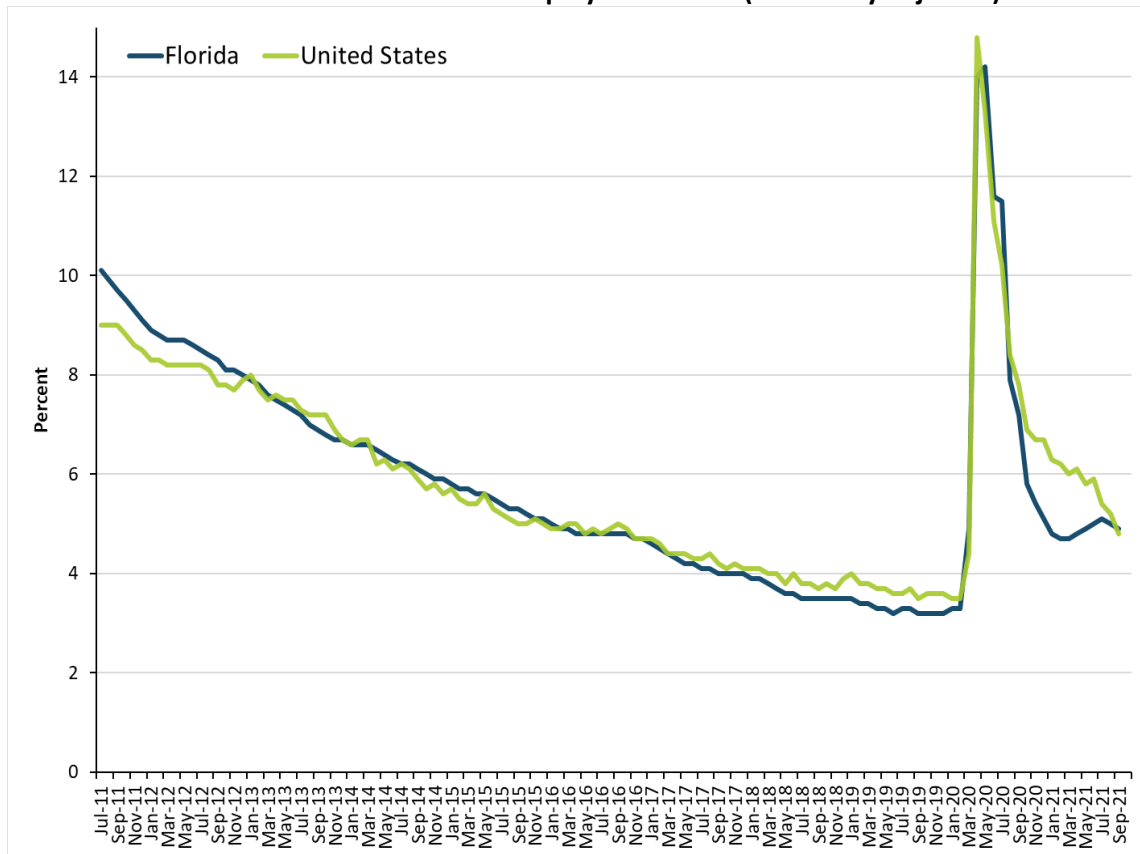
Florida’s September Employment Figures Released

Florida’s seasonally adjusted unemployment rate was 4.9 percent in September 2021, down 0.1 percentage point from the August 2021 rate, and down 2.3 percentage points from a year ago. There were 517,000 jobless Floridians out of a labor force of 10,593,000. The U.S. unemployment rate was 4.8 percent in September.

Florida’s seasonally adjusted total nonagricultural employment was 8,866,700 in September 2021, an increase of 84,500 jobs (+1.0 percent) over the month. The state gained 405,900 jobs over the year, an increase of 4.8 percent. Nationally, the number of jobs rose 4.0 percent over the year.

The September 2021 total nonagricultural employment has not reached the pre-pandemic levels in February 2020.

United States and Florida Unemployment Rates (seasonally adjusted)



Source: U.S. Department of Labor, Bureau of Labor Statistics, Local Area Unemployment Statistics Program, in cooperation with the Florida Department of Economic Opportunity, Bureau of Workforce Statistics and Economic Research.

Florida's Nonagricultural Employment by Industry (Seasonally Adjusted)

- Florida lost 1,269,200 jobs from February to April 2020 and has since gained back 83.8 percent of the jobs lost (+1,063,800 jobs).
- The number of jobs in Florida was 8,866,700 in September 2021, up 405,900 jobs compared to a year ago. Nine of the ten major industries experienced positive over-the-year job growth in September.
- The industries gaining jobs over the year included leisure and hospitality (+143,400 jobs, +14.9 percent); professional and business services (+73,600 jobs, +5.4 percent); trade, transportation, and utilities (+53,300 jobs, +3.0 percent); education and health services (+46,400 jobs, +3.6 percent); financial activities (+29,100 jobs, +4.9 percent); other services (+27,200 jobs, +8.6 percent); construction (+19,500 jobs, +3.5 percent); manufacturing (+12,500 jobs, +3.3 percent); and information (+6,800 jobs, +5.2 percent).
- One major industry losing jobs was total government (-5,500 jobs, -0.5 percent).

Local Area Unemployment Statistics (Not Seasonally Adjusted)

- In September 2021, Monroe County had the state's lowest unemployment rate (2.6 percent), followed by St. Johns County (2.9 percent), Wakulla County (3.1 percent), and Okaloosa County and Nassau County (3.2 percent each).
- Hendry County had the highest unemployment rate (6.7 percent) in Florida in September 2021, followed by Putnam County (5.9 percent), Highlands County (5.7 percent), and Miami-Dade County and Hamilton County and Sumter County (5.6 percent each).

Area Nonagricultural Employment (Not Seasonally Adjusted)

- In September 2021, 23 out of 24 metro areas in Florida had over-the-year job gains. The areas with the largest gains were Orlando-Kissimmee-Sanford (+81,600 jobs, +7.0 percent), Tampa-St. Petersburg-Clearwater (+79,900 jobs, +6.0 percent), Miami-Miami Beach-Kendall (+61,400 jobs, +5.6 percent), and Fort Lauderdale-Pompano Beach-Deerfield Beach (+31,300 jobs, +3.9 percent).
- Only one out of 24 metro areas in Florida experienced an over-the-year job loss in September 2021: The Villages (-100 jobs, -0.3 percent).

The unemployment and job growth rates are estimates, which are primarily based on surveys created and mandated by the U.S. Bureau of Labor Statistics in cooperation with the Florida Department of Economic Opportunity.

The unemployment rate is derived from Florida household surveys conducted by the U.S. Census Bureau under contract with the U.S. Bureau of Labor Statistics. The job growth rate is derived from Florida employer surveys conducted by the U.S. Bureau of Labor Statistics.

Both estimates are revised on a monthly basis. In addition, these estimates are benchmarked (revised) annually based on actual counts from Florida's Reemployment Assistance tax records and other data.

Procedures mandated by the U.S. Bureau of Labor Statistics may result in more variable month-to-month changes. For further information, go to: <http://www.bls.gov/sae/cesprocs.htm>

The mission of the Florida Department of Economic Opportunity is to promote economic prosperity for all Floridians and businesses through successful workforce, community, and economic development strategies. Please visit www.floridajobs.org for more information.

The next Florida Employment and Unemployment release will be November 19, 2021, at 10:00 A.M.

LABOR FORCE STATUS OF THE CIVILIAN NONINSTITUTIONAL POPULATION
RELEASE DATE: OCTOBER 22, 2021

SEASONALLY ADJUSTED

	Current Month September 2021	Month Ago August 2021	Year Ago September 2020	Over-the-Month Change		Over-the-Year Change	
				Level	Percent	Level	Percent

STATE OF FLORIDA

Civilian Noninstitutional							
Population 16+	17,888,000	17,868,000	17,689,000	20,000	0.1	199,000	1.1
Civilian Labor Force	10,593,000	10,543,000	10,053,000	50,000	0.5	540,000	5.4
Employment	10,076,000	10,013,000	9,334,000	63,000	0.6	742,000	7.9
Unemployment	517,000	530,000	719,000	-13,000	-2.5	-202,000	-28.1
Unemployment Rate (%)	4.9	5.0	7.2	-0.1	--	-2.3	--

UNITED STATES

Civilian Noninstitutional							
Population 16+	261,766,000	261,611,000	260,742,000	155,000	0.1	1,024,000	0.4
Civilian Labor Force	161,354,000	161,537,000	160,078,000	-183,000	-0.1	1,276,000	0.8
Employment	153,680,000	153,154,000	147,543,000	526,000	0.3	6,137,000	4.2
Unemployment	7,674,000	8,384,000	12,535,000	-710,000	-8.5	-4,861,000	-38.8
Unemployment Rate (%)	4.8	5.2	7.8	-0.4	--	-3.0	--

NOT SEASONALLY ADJUSTED

	Current Month September 2021	Month Ago August 2021	Year Ago September 2020	Over-the-Month Change		Over-the-Year Change	
				Level	Percent	Level	Percent

STATE OF FLORIDA

Civilian Noninstitutional							
Population 16+	17,888,000	17,868,000	17,689,000	20,000	0.1	199,000	1.1
Civilian Labor Force	10,669,000	10,627,000	10,110,000	42,000	0.4	559,000	5.5
Employment	10,209,000	10,101,000	9,369,000	108,000	1.1	840,000	9.0
Unemployment	460,000	526,000	741,000	-66,000	-12.5	-281,000	-37.9
Unemployment Rate (%)	4.3	4.9	7.3	-0.6	--	-3.0	--

UNITED STATES

Civilian Noninstitutional							
Population 16+	261,766,000	261,611,000	260,742,000	155,000	0.1	1,024,000	0.4
Civilian Labor Force	161,392,000	161,788,000	160,073,000	-396,000	-0.2	1,319,000	0.8
Employment	154,026,000	153,232,000	147,796,000	794,000	0.5	6,230,000	4.2
Unemployment	7,366,000	8,556,000	12,277,000	-1,190,000	-13.9	-4,911,000	-40.0
Unemployment Rate (%)	4.6	5.3	7.7	-0.7	--	-3.1	--

* = less than 0.1 percent

Note: All estimates except unemployment rates are rounded to the nearest thousand. Items may not add to totals or compute to displayed percentages due to rounding. All data are subject to revision.

Source: U.S. Department of Labor, Bureau of Labor Statistics, Local Area Unemployment Statistics Program, in cooperation with the Florida Department of Economic Opportunity, Bureau of Workforce Statistics and Economic Research.

**Nonagricultural Employment in Florida
Seasonally Adjusted**

	September ^P	August ^r	September	Over-the-Month		Over-the-Year	
	2021	2021	2020	Level	Percent	Level	Percent
Total Nonagricultural Employment	8,866,700	8,782,200	8,460,800	84,500	1.0	405,900	4.8
Total Private	7,763,800	7,691,100	7,352,400	72,700	0.9	411,400	5.6
Goods Producing	969,200	958,800	937,600	10,400	1.1	31,600	3.4
Mining, Logging, and Construction	583,000	576,100	563,900	6,900	1.2	19,100	3.4
Construction	577,400	570,500	557,900	6,900	1.2	19,500	3.5
Manufacturing	386,200	382,700	373,700	3,500	0.9	12,500	3.3
Durable Goods	266,300	263,800	256,900	2,500	0.9	9,400	3.7
Nondurable Goods	119,900	118,900	116,800	1,000	0.8	3,100	2.7
Service Producing	7,897,500	7,823,400	7,523,200	74,100	0.9	374,300	5.0
Private Service Providing	6,794,600	6,732,300	6,414,800	62,300	0.9	379,800	5.9
Trade, Transportation, and Utilities	1,807,100	1,787,900	1,753,800	19,200	1.1	53,300	3.0
Wholesale Trade	356,500	353,900	340,400	2,600	0.7	16,100	4.7
Retail Trade	1,087,000	1,069,200	1,068,800	17,800	1.7	18,200	1.7
Transportation, Warehousing, and Utilities	363,600	364,800	344,600	-1,200	-0.3	19,000	5.5
Information	136,600	136,900	129,800	-300	-0.2	6,800	5.2
Financial Activities	622,300	621,200	593,200	1,100	0.2	29,100	4.9
Finance and Insurance	422,900	421,700	408,800	1,200	0.3	14,100	3.4
Real Estate, Rental, and Leasing	199,400	199,500	184,400	-100	-0.1	15,000	8.1
Professional and Business Services	1,428,900	1,418,500	1,355,300	10,400	0.7	73,600	5.4
Professional and Technical Services	660,700	658,000	605,600	2,700	0.4	55,100	9.1
Management of Companies and Enterprises	110,500	110,300	110,700	200	0.2	-200	-0.2
Administrative and Waste Services	657,700	650,200	639,000	7,500	1.2	18,700	2.9
Education and Health Services	1,347,300	1,341,000	1,300,900	6,300	0.5	46,400	3.6
Educational Services	176,400	175,300	163,200	1,100	0.6	13,200	8.1
Health Care and Social Assistance	1,170,900	1,165,700	1,137,700	5,200	0.4	33,200	2.9
Leisure and Hospitality	1,107,900	1,081,300	964,500	26,600	2.5	143,400	14.9
Arts, Entertainment, and Recreation	185,300	182,800	172,500	2,500	1.4	12,800	7.4
Accommodation and Food Services	922,600	898,500	792,000	24,100	2.7	130,600	16.5
Other Services	344,500	345,500	317,300	-1,000	-0.3	27,200	8.6

Source: U.S. Department of Labor, Bureau of Labor Statistics, Current Employment Statistics Program.

Prepared by: Florida Department of Economic Opportunity, Bureau of Workforce Statistics and Economic Research.

**Nonagricultural Employment in Florida
Seasonally Adjusted**

	September ^p 2021	August ^r 2021	September 2020	Over-the-Month Change		Over-the-Year Change	
				Level	Percent	Level	Percent
Total Government	1,102,900	1,091,100	1,108,400	11,800	1.1	-5,500	-0.5
Federal Government	148,900	148,100	163,800	800	0.5	-14,900	-9.1
State Government	235,800	236,100	244,100	-300	-0.1	-8,300	-3.4
Local Government	718,200	706,900	700,500	11,300	1.6	17,700	2.5

Released: October 22, 2021

p = preliminary, r = revised

Note: Sum of detail may not equal totals due to rounding or the exclusion of certain industries from publication. All data are subject to revision.

**NONAGRICULTURAL EMPLOYMENT IN FLORIDA
STATEWIDE (Not Seasonally Adjusted)**

Released October 22, 2021

Industry Title	September 2021	August 2021	September 2020	Change from			
				Aug 2021 to Level	Sep 2021 Percent	Sep 2020 to Level	Sep 2021 Percent
Total Nonagricultural Employment	8,836,200	8,756,000	8,399,700	80,200	0.9%	436,500	5.2%
Total Private	7,720,500	7,668,600	7,283,800	51,900	0.7%	436,700	6.0%
Goods Producing	967,100	959,500	936,700	7,600	0.8%	30,400	3.2%
Mining and Logging	5,600	5,600	5,400	0	0.0%	200	3.7%
Mining, except Oil and Gas	3,400	3,300	3,300	100	3.0%	100	3.0%
Mining, Logging, and Construction	583,600	578,300	564,000	5,300	0.9%	19,600	3.5%
Construction	578,000	572,700	558,600	5,300	0.9%	19,400	3.5%
Construction of Buildings	118,400	115,200	108,300	3,200	2.8%	10,100	9.3%
Heavy and Civil Engineering Construction	75,400	74,200	72,900	1,200	1.6%	2,500	3.4%
Specialty Trade Contractors	384,200	383,300	377,400	900	0.2%	6,800	1.8%
Building Equipment Contractors	166,000	164,500	166,800	1,500	0.9%	-800	-0.5%
Manufacturing	383,500	381,200	372,700	2,300	0.6%	10,800	2.9%
Durable Goods	264,600	263,100	256,600	1,500	0.6%	8,000	3.1%
Fabricated Metal Product Manufacturing	39,900	39,500	39,600	400	1.0%	300	0.8%
Computer and Electronic Product Manufacturing	44,500	44,400	44,100	100	0.2%	400	0.9%
Communications Equipment Manufacturing	5,500	5,500	5,400	0	0.0%	100	1.9%
Transportation Equipment Manufacturing	49,100	49,000	48,000	100	0.2%	1,100	2.3%
Aerospace Product and Parts Manufacturing	27,500	27,700	26,800	-200	-0.7%	700	2.6%
Miscellaneous Durable Goods Manufacturing	33,400	33,200	31,600	200	0.6%	1,800	5.7%
Nondurable Goods	118,900	118,100	116,100	800	0.7%	2,800	2.4%
Food Manufacturing	33,300	33,000	32,700	300	0.9%	600	1.8%
Beverage and Tobacco Product Manufacturing	11,700	11,600	11,400	100	0.9%	300	2.6%
Paper Manufacturing	8,200	8,200	8,400	0	0.0%	-200	-2.4%
Printing and Related Support Activities	13,300	13,400	14,800	-100	-0.7%	-1,500	-10.1%
Chemical Manufacturing	24,700	24,500	24,200	200	0.8%	500	2.1%

Source: U.S. Department of Labor, Bureau of Labor Statistics, Current Employment Statistics Program.

Prepared by: Florida Department of Economic Opportunity, Bureau of Workforce Statistics and Economic Research.

**NONAGRICULTURAL EMPLOYMENT IN FLORIDA
STATEWIDE (Not Seasonally Adjusted)**

Released October 22, 2021

Industry Title	September 2021	August 2021	September 2020	Change from			
				Aug 2021 to Level	Sep 2021 Percent	Sep 2020 to Level	Sep 2021 Percent
Service Providing	7,869,100	7,796,500	7,463,000	72,600	0.9%	406,100	5.4%
Private Service Providing	6,753,400	6,709,100	6,347,100	44,300	0.7%	406,300	6.4%
Trade, Transportation, and Utilities	1,789,200	1,776,000	1,729,200	13,200	0.7%	60,000	3.5%
Wholesale Trade	356,600	352,500	338,300	4,100	1.2%	18,300	5.4%
Merchant Wholesalers, Durable Goods	198,300	195,400	186,000	2,900	1.5%	12,300	6.6%
Professional and Commercial Equipment Wholesalers	53,500	53,200	49,700	300	0.6%	3,800	7.6%
Electrical and Electronic Goods Wholesalers	22,100	22,000	21,700	100	0.5%	400	1.8%
Machinery and Supply Wholesalers	31,900	31,900	32,800	0	0.0%	-900	-2.7%
Merchant Wholesalers, Nondurable Goods	134,900	133,400	129,200	1,500	1.1%	5,700	4.4%
Grocery and Related Product Wholesalers	56,100	54,600	50,700	1,500	2.7%	5,400	10.7%
Wholesale Electronic Markets and Agents	23,400	23,700	23,100	-300	-1.3%	300	1.3%
Retail Trade	1,072,100	1,062,700	1,051,700	9,400	0.9%	20,400	1.9%
Motor Vehicle and Parts Dealers	146,000	147,000	142,300	-1,000	-0.7%	3,700	2.6%
Automobile Dealers	91,200	90,900	88,900	300	0.3%	2,300	2.6%
Furniture and Home Furnishings Stores	35,700	34,800	34,200	900	2.6%	1,500	4.4%
Electronics and Appliance Stores	33,200	32,300	34,100	900	2.8%	-900	-2.6%
Building Material and Garden Supply Stores	97,300	96,000	95,300	1,300	1.4%	2,000	2.1%
Food and Beverage Stores	242,500	241,000	238,500	1,500	0.6%	4,000	1.7%
Health and Personal Care Stores	77,600	75,800	74,300	1,800	2.4%	3,300	4.4%
Gasoline Stations	44,400	44,200	44,000	200	0.5%	400	0.9%
Clothing and Accessory Stores	80,600	81,200	75,600	-600	-0.7%	5,000	6.6%
Sporting Goods, Hobby, Book, and Music Stores	30,000	29,300	30,600	700	2.4%	-600	-2.0%
General Merchandise Stores	200,800	196,100	200,100	4,700	2.4%	700	0.3%
Department Stores	61,100	61,000	60,400	100	0.2%	700	1.2%
Other General Merchandise Stores	139,700	135,100	139,700	4,600	3.4%	0	0.0%
Miscellaneous Store Retailers	51,100	51,800	50,500	-700	-1.4%	600	1.2%
Nonstore Retailers	32,900	33,200	32,200	-300	-0.9%	700	2.2%
Electronic Shopping and Mail-Order Houses	24,900	24,800	23,900	100	0.4%	1,000	4.2%
Transportation, Warehousing, and Utilities	360,500	360,800	339,200	-300	-0.1%	21,300	6.3%
Utilities	22,000	22,300	22,900	-300	-1.3%	-900	-3.9%

Source: U.S. Department of Labor, Bureau of Labor Statistics, Current Employment Statistics Program.

Prepared by: Florida Department of Economic Opportunity, Bureau of Workforce Statistics and Economic Research.

**NONAGRICULTURAL EMPLOYMENT IN FLORIDA
STATEWIDE (Not Seasonally Adjusted)**

Released October 22, 2021

Industry Title	September 2021	August 2021	September 2020	Change from			
				Aug 2021 to Sep 2021 Level	Sep 2021 Percent	Sep 2020 to Sep 2021 Level	Sep 2021 Percent
Transportation and Warehousing	338,500	338,500	316,300	0	0.0%	22,200	7.0%
Air Transportation	46,000	46,100	44,400	-100	-0.2%	1,600	3.6%
Water Transportation	12,700	12,800	12,300	-100	-0.8%	400	3.3%
Truck Transportation	58,300	60,200	60,200	-1,900	-3.2%	-1,900	-3.2%
Support Activities for Transportation	62,400	63,300	55,800	-900	-1.4%	6,600	11.8%
Couriers and Messengers	63,100	60,800	54,700	2,300	3.8%	8,400	15.4%
Warehousing and Storage	75,700	75,000	70,100	700	0.9%	5,600	8.0%
Information	135,600	136,400	128,200	-800	-0.6%	7,400	5.8%
Publishing Industries, except Internet	31,100	31,100	30,100	0	0.0%	1,000	3.3%
Broadcasting, except Internet	13,700	13,800	13,700	-100	-0.7%	0	0.0%
Telecommunications	46,700	47,100	46,500	-400	-0.8%	200	0.4%
Wired Telecommunications Carriers	35,300	35,500	35,500	-200	-0.6%	-200	-0.6%
Data Processing, Hosting, and Related Services	21,800	21,600	20,700	200	0.9%	1,100	5.3%
Financial Activities	621,100	621,900	590,700	-800	-0.1%	30,400	5.1%
Finance and Insurance	422,100	421,900	407,700	200	0.0%	14,400	3.5%
Credit Intermediation and Related Activities	170,000	171,200	170,600	-1,200	-0.7%	-600	-0.4%
Depository Credit Intermediation	107,700	107,600	108,900	100	0.1%	-1,200	-1.1%
Insurance Carriers and Related Activities	200,700	199,000	186,800	1,700	0.9%	13,900	7.4%
Insurance Carriers	95,000	94,600	90,000	400	0.4%	5,000	5.6%
Agencies, Brokerages, and Related	105,700	104,400	96,800	1,300	1.2%	8,900	9.2%
Real Estate, Rental, and Leasing	199,000	200,000	183,000	-1,000	-0.5%	16,000	8.7%
Real Estate	158,500	160,400	145,500	-1,900	-1.2%	13,000	8.9%
Professional and Business Services	1,424,400	1,413,600	1,346,700	10,800	0.8%	77,700	5.8%
Professional, Scientific, and Technical Services	655,000	655,500	598,000	-500	-0.1%	57,000	9.5%
Legal Services	109,000	107,600	102,100	1,400	1.3%	6,900	6.8%
Accounting, Tax Preparation, and Bookkeeping	70,700	70,900	67,100	-200	-0.3%	3,600	5.4%
Architectural, Engineering, and Related	94,800	95,900	90,300	-1,100	-1.1%	4,500	5.0%
Computer Systems Design and Related	118,100	117,500	107,600	600	0.5%	10,500	9.8%
Management and Technical Consulting Services	141,900	142,900	122,400	-1,000	-0.7%	19,500	15.9%
Management of Companies and Enterprises	110,200	110,300	110,000	-100	-0.1%	200	0.2%

Source: U.S. Department of Labor, Bureau of Labor Statistics, Current Employment Statistics Program.

Prepared by: Florida Department of Economic Opportunity, Bureau of Workforce Statistics and Economic Research.

**NONAGRICULTURAL EMPLOYMENT IN FLORIDA
STATEWIDE (Not Seasonally Adjusted)**

Released October 22, 2021

Industry Title	September 2021	August 2021	September 2020	Change from			
				Aug 2021 to Sep 2021 Level	Sep 2021 Percent	Sep 2020 to Sep 2021 Level	Sep 2021 Percent
Administrative and Support and Waste Services	659,200	647,800	638,700	11,400	1.8%	20,500	3.2%
Administrative and Support Services	631,000	619,500	611,600	11,500	1.9%	19,400	3.2%
Employment Services	206,100	197,800	185,000	8,300	4.2%	21,100	11.4%
Business Support Services	85,300	84,200	85,900	1,100	1.3%	-600	-0.7%
Travel Arrangement and Reservation Services	17,800	17,700	19,500	100	0.6%	-1,700	-8.7%
Investigation and Security Services	81,200	81,800	74,700	-600	-0.7%	6,500	8.7%
Services to Buildings and Dwellings	183,300	182,000	183,100	1,300	0.7%	200	0.1%
Waste Management and Remediation Services	28,200	28,300	27,100	-100	-0.4%	1,100	4.1%
Education and Health Services	1,348,100	1,333,400	1,296,900	14,700	1.1%	51,200	3.9%
Educational Services	178,400	169,000	162,700	9,400	5.6%	15,700	9.6%
Elementary and Secondary Schools	68,000	65,400	64,800	2,600	4.0%	3,200	4.9%
Colleges and Universities	53,500	49,700	52,300	3,800	7.6%	1,200	2.3%
Health Care and Social Assistance	1,169,700	1,164,400	1,134,200	5,300	0.5%	35,500	3.1%
Ambulatory Health Care Services	545,800	541,000	517,100	4,800	0.9%	28,700	5.6%
Offices of Physicians	238,500	235,900	224,500	2,600	1.1%	14,000	6.2%
Home Health Care Services	78,800	79,000	76,100	-200	-0.3%	2,700	3.5%
Hospitals	315,600	316,000	310,800	-400	-0.1%	4,800	1.5%
Nursing and Residential Care Facilities	169,600	169,900	177,100	-300	-0.2%	-7,500	-4.2%
Nursing Care Facilities	81,800	81,800	84,500	0	0.0%	-2,700	-3.2%
Continuing Community Care Facilities for the Elderly	63,400	63,600	63,800	-200	-0.3%	-400	-0.6%
Social Assistance	138,700	137,500	129,200	1,200	0.9%	9,500	7.4%
Leisure and Hospitality	1,092,200	1,083,600	941,200	8,600	0.8%	151,000	16.0%
Arts, Entertainment, and Recreation	183,400	180,700	168,200	2,700	1.5%	15,200	9.0%
Amusement, Gambling, and Recreation	142,500	140,400	135,500	2,100	1.5%	7,000	5.2%
Amusement Parks and Arcades	43,200	42,400	47,200	800	1.9%	-4,000	-8.5%
Accommodation and Food Services	908,800	902,900	773,000	5,900	0.7%	135,800	17.6%
Accommodation	139,600	139,000	112,700	600	0.4%	26,900	23.9%
Food Services and Drinking Places	769,200	763,900	660,300	5,300	0.7%	108,900	16.5%

Source: U.S. Department of Labor, Bureau of Labor Statistics, Current Employment Statistics Program.

Prepared by: Florida Department of Economic Opportunity, Bureau of Workforce Statistics and Economic Research.

**NONAGRICULTURAL EMPLOYMENT IN FLORIDA
STATEWIDE (Not Seasonally Adjusted)**

Released October 22, 2021

Industry Title	September 2021	August 2021	September 2020	Change from			
				Aug 2021 to Sep 2021 Level	Sep 2021 Percent	Sep 2020 to Sep 2021 Level	Sep 2021 Percent
Other Services	342,800	344,200	314,200	-1,400	-0.4%	28,600	9.1%
Repair and Maintenance	93,300	93,600	82,800	-300	-0.3%	10,500	12.7%
Automotive Repair and Maintenance	59,800	59,800	53,500	0	0.0%	6,300	11.8%
Personal and Laundry Services	99,300	98,700	83,900	600	0.6%	15,400	18.4%
Membership Associations and Organizations	150,200	151,900	147,500	-1,700	-1.1%	2,700	1.8%
Total Government	1,115,700	1,087,400	1,115,900	28,300	2.6%	-200	*
Federal	148,700	147,500	163,700	1,200	0.8%	-15,000	-9.2%
State	239,900	226,900	246,800	13,000	5.7%	-6,900	-2.8%
State Government Educational Services	131,900	118,700	134,800	13,200	11.1%	-2,900	-2.2%
State Government Excluding Education	108,000	108,200	112,000	-200	-0.2%	-4,000	-3.6%
Local	727,100	713,000	705,400	14,100	2.0%	21,700	3.1%
Local Government Educational Services	355,900	338,900	335,900	17,000	5.0%	20,000	6.0%
Local Government excluding Educational Services	371,200	374,100	369,500	-2,900	-0.8%	1,700	0.5%

* - less than .1 percent

Note: Employment estimates have been rounded to the nearest hundred. Sum of detail may not equal totals due to rounding or the exclusion of certain industries from publication. All data are subject to revision.

Source: U.S. Department of Labor, Bureau of Labor Statistics, Current Employment Statistics Program.

Prepared by: Florida Department of Economic Opportunity, Bureau of Workforce Statistics and Economic Research.

STATE OF FLORIDA
LOCAL AREA UNEMPLOYMENT STATISTICS BY COUNTY
(NOT SEASONALLY ADJUSTED)

COUNTY	SEPTEMBER 2021				AUGUST 2021				SEPTEMBER 2020			
	LABOR FORCE	EMPLOY- MENT	UNEMPLOYMENT LEVEL	UNEMPLOYMENT RATE	LABOR FORCE	EMPLOY- MENT	UNEMPLOYMENT LEVEL	UNEMPLOYMENT RATE	LABOR FORCE	EMPLOY- MENT	UNEMPLOYMENT LEVEL	UNEMPLOYMENT RATE
Alachua County	144,145	139,134	5,011	3.5%	140,474	134,605	5,869	4.2%	136,377	130,174	6,203	4.5%
Baker County	12,779	12,323	456	3.6%	12,705	12,187	518	4.1%	11,920	11,394	526	4.4%
Bay County	88,657	85,481	3,176	3.6%	89,145	85,469	3,676	4.1%	83,940	79,994	3,946	4.7%
Bradford County	11,326	10,881	445	3.9%	11,297	10,796	501	4.4%	10,985	10,421	564	5.1%
Brevard County	301,099	289,688	11,411	3.8%	300,152	287,341	12,811	4.3%	282,272	266,805	15,467	5.5%
Broward County	1,055,549	1,009,405	46,144	4.4%	1,058,060	1,006,112	51,948	4.9%	1,008,017	929,959	78,058	7.7%
Calhoun County	5,260	5,035	225	4.3%	5,103	4,859	244	4.8%	4,868	4,650	218	4.5%
Charlotte County	74,398	71,195	3,203	4.3%	74,625	70,919	3,706	5.0%	70,748	66,479	4,269	6.0%
Citrus County	48,994	46,373	2,621	5.3%	49,184	46,087	3,097	6.3%	46,628	43,394	3,234	6.9%
Clay County	113,896	110,106	3,790	3.3%	113,271	108,896	4,375	3.9%	106,445	101,925	4,520	4.2%
Collier County	185,780	179,129	6,651	3.6%	185,910	178,097	7,813	4.2%	171,558	161,466	10,092	5.9%
Columbia County	31,812	30,496	1,316	4.1%	31,681	30,204	1,477	4.7%	29,992	28,403	1,589	5.3%
DeSoto County	15,270	14,706	564	3.7%	15,133	14,484	649	4.3%	14,021	13,381	640	4.6%
Dixie County	6,656	6,398	258	3.9%	6,414	6,104	310	4.8%	6,194	5,905	289	4.7%
Duval County	519,996	498,879	21,117	4.1%	517,682	493,651	24,031	4.6%	489,484	460,970	28,514	5.8%
Escambia County	153,957	147,492	6,465	4.2%	154,005	146,602	7,403	4.8%	145,215	136,933	8,282	5.7%
Flagler County	48,823	46,653	2,170	4.4%	48,845	46,349	2,496	5.1%	46,329	43,433	2,896	6.3%
Franklin County	4,979	4,800	179	3.6%	5,072	4,854	218	4.3%	4,780	4,587	193	4.0%
Gadsden County	19,886	18,836	1,050	5.3%	19,437	18,324	1,113	5.7%	18,813	17,538	1,275	6.8%
Gilchrist County	7,529	7,258	271	3.6%	7,358	7,045	313	4.3%	7,111	6,815	296	4.2%
Glades County	5,613	5,404	209	3.7%	5,647	5,385	262	4.6%	5,086	4,836	250	4.9%
Gulf County	5,365	5,181	184	3.4%	5,400	5,184	216	4.0%	5,110	4,851	259	5.1%
Hamilton County	4,443	4,192	251	5.6%	4,384	4,110	274	6.3%	4,317	3,983	334	7.7%
Hardee County	9,113	8,650	463	5.1%	9,195	8,643	552	6.0%	8,579	8,056	523	6.1%
Hendry County	16,484	15,379	1,105	6.7%	16,554	15,323	1,231	7.4%	15,559	14,291	1,268	8.1%
Hernando County	76,842	73,168	3,674	4.8%	76,382	72,144	4,238	5.5%	71,122	66,412	4,710	6.6%
Highlands County	36,499	34,406	2,093	5.7%	36,534	34,151	2,383	6.5%	34,277	31,844	2,433	7.1%
Hillsborough County	807,716	776,370	31,346	3.9%	798,942	763,397	35,545	4.4%	752,404	706,177	46,227	6.1%
Holmes County	7,271	6,982	289	4.0%	7,270	6,932	338	4.6%	6,921	6,607	314	4.5%
Indian River County	67,939	64,842	3,097	4.6%	67,876	64,280	3,596	5.3%	63,003	59,019	3,984	6.3%
Jackson County	18,743	17,934	809	4.3%	18,484	17,550	934	5.1%	17,582	16,744	838	4.8%
Jefferson County	5,679	5,434	245	4.3%	5,582	5,311	271	4.9%	5,411	5,144	267	4.9%
Lafayette County	2,967	2,858	109	3.7%	2,958	2,827	131	4.4%	2,845	2,728	117	4.1%
Lake County	161,381	154,407	6,974	4.3%	160,161	152,213	7,948	5.0%	149,969	139,092	10,877	7.3%
Lee County	361,821	347,319	14,502	4.0%	360,698	344,174	16,524	4.6%	340,022	319,239	20,783	6.1%
Leon County	158,749	152,390	6,359	4.0%	156,213	148,900	7,313	4.7%	152,392	144,533	7,859	5.2%
Levy County	17,936	17,163	773	4.3%	17,802	16,912	890	5.0%	16,882	16,036	846	5.0%
Liberty County	2,790	2,661	129	4.6%	2,737	2,599	138	5.0%	2,639	2,518	121	4.6%
Madison County	8,008	7,643	365	4.6%	8,035	7,610	425	5.3%	7,822	7,340	482	6.2%

Source: U.S. Department of Labor, Bureau of Labor Statistics, Local Area Unemployment Statistics Program, in cooperation with the Florida Department of Economic Opportunity, Bureau of Workforce Statistics and Economic Research.

STATE OF FLORIDA
LOCAL AREA UNEMPLOYMENT STATISTICS BY COUNTY
(NOT SEASONALLY ADJUSTED)

COUNTY	SEPTEMBER 2021				AUGUST 2021				SEPTEMBER 2020			
	LABOR FORCE	EMPLOY- MENT	UNEMPLOYMENT LEVEL	UNEMPLOYMENT RATE	LABOR FORCE	EMPLOY- MENT	UNEMPLOYMENT LEVEL	UNEMPLOYMENT RATE	LABOR FORCE	EMPLOY- MENT	UNEMPLOYMENT LEVEL	UNEMPLOYMENT RATE
Manatee County	187,721	180,708	7,013	3.7%	186,821	178,624	8,197	4.4%	173,924	164,210	9,714	5.6%
Marion County	145,928	139,024	6,904	4.7%	146,647	138,798	7,849	5.4%	138,920	130,506	8,414	6.1%
Martin County	77,604	74,970	2,634	3.4%	77,775	74,651	3,124	4.0%	72,023	68,546	3,477	4.8%
Miami-Dade County	1,365,072	1,287,962	77,110	5.6%	1,358,403	1,268,014	90,389	6.7%	1,352,247	1,182,171	170,076	12.6%
Monroe County	48,604	47,360	1,244	2.6%	48,717	47,275	1,442	3.0%	43,335	40,867	2,468	5.7%
Nassau County	44,418	42,982	1,436	3.2%	44,205	42,548	1,657	3.7%	41,527	39,716	1,811	4.4%
Okaloosa County	101,172	97,920	3,252	3.2%	101,981	98,201	3,780	3.7%	96,514	92,551	3,963	4.1%
Okeechobee County	18,059	17,296	763	4.2%	17,931	17,057	874	4.9%	17,263	16,436	827	4.8%
Orange County	758,066	724,089	33,977	4.5%	751,170	713,455	37,715	5.0%	719,486	653,205	66,281	9.2%
Osceola County	186,788	176,720	10,068	5.4%	185,200	174,137	11,063	6.0%	180,021	159,366	20,655	11.5%
Palm Beach County	751,806	720,788	31,018	4.1%	755,087	719,843	35,244	4.7%	708,512	661,893	46,619	6.6%
Pasco County	256,095	245,586	10,509	4.1%	254,059	242,021	12,038	4.7%	237,255	223,298	13,957	5.9%
Pinellas County	519,356	500,531	18,825	3.6%	514,765	493,269	21,496	4.2%	482,237	454,645	27,592	5.7%
Polk County	332,227	315,732	16,495	5.0%	330,423	311,798	18,625	5.6%	318,019	293,055	24,964	7.8%
Putnam County	27,750	26,099	1,651	5.9%	27,667	25,891	1,776	6.4%	26,917	24,956	1,961	7.3%
Santa Rosa County	88,296	85,388	2,908	3.3%	88,237	84,823	3,414	3.9%	82,718	79,391	3,327	4.0%
Sarasota County	196,821	189,609	7,212	3.7%	196,301	187,865	8,436	4.3%	181,663	171,752	9,911	5.5%
Seminole County	252,578	242,985	9,593	3.8%	250,321	239,564	10,757	4.3%	232,939	218,674	14,265	6.1%
St. Johns County	143,645	139,444	4,201	2.9%	143,010	138,126	4,884	3.4%	134,190	128,830	5,360	4.0%
St. Lucie County	154,714	147,611	7,103	4.6%	155,148	146,995	8,153	5.3%	145,138	135,508	9,630	6.6%
Sumter County	33,333	31,473	1,860	5.6%	33,646	31,500	2,146	6.4%	31,875	29,737	2,138	6.7%
Suwannee County	18,594	17,794	800	4.3%	18,564	17,681	883	4.8%	17,901	16,984	917	5.1%
Taylor County	8,341	7,984	357	4.3%	8,389	7,973	416	5.0%	8,264	7,712	552	6.7%
Union County	4,586	4,416	170	3.7%	4,570	4,374	196	4.3%	4,613	4,426	187	4.1%
Volusia County	261,419	250,103	11,316	4.3%	261,402	248,616	12,786	4.9%	247,939	232,359	15,580	6.3%
Wakulla County	15,855	15,356	499	3.1%	15,602	15,018	584	3.7%	15,055	14,499	556	3.7%
Walton County	33,762	32,601	1,161	3.4%	34,101	32,735	1,366	4.0%	31,989	30,613	1,376	4.3%
Washington County	10,099	9,682	417	4.1%	10,116	9,637	479	4.7%	9,485	9,030	455	4.8%
Florida (Not Seasonally Adjusted)	10,669,000	10,209,000	460,000	4.3%	10,627,000	10,101,000	526,000	4.9%	10,110,000	9,369,000	741,000	7.3%
Florida (Seasonally Adjusted)	10,593,000	10,076,000	517,000	4.9%	10,543,000	10,013,000	530,000	5.0%	10,053,000	9,334,000	719,000	7.2%
United States (Not Seasonally Adjusted)	161,392,000	154,026,000	7,366,000	4.6%	161,788,000	153,232,000	8,556,000	5.3%	160,073,000	147,796,000	12,277,000	7.7%
United States (Seasonally Adjusted)	161,354,000	153,680,000	7,674,000	4.8%	161,537,000	153,154,000	8,384,000	5.2%	160,078,000	147,543,000	12,535,000	7.8%

Released: Friday, October 22, 2021

NOTE: Items may not add to totals or compute to displayed percentages due to rounding. All data are subject to revision.

Source: U.S. Department of Labor, Bureau of Labor Statistics, Local Area Unemployment Statistics Program, in cooperation with the Florida Department of Economic Opportunity, Bureau of Workforce Statistics and Economic Research.

STATE OF FLORIDA
 LOCAL AREA UNEMPLOYMENT STATISTICS BY METROPOLITAN STATISTICAL AREA (MSA) AND METROPOLITAN DIVISION (MD)
 (NOT SEASONALLY ADJUSTED)

MSA/MD	SEPTEMBER 2021				AUGUST 2021				SEPTEMBER 2020			
	LABOR FORCE	EMPLOYMENT	UNEMPLOYMENT LEVEL	UNEMPLOYMENT RATE	LABOR FORCE	EMPLOYMENT	UNEMPLOYMENT LEVEL	UNEMPLOYMENT RATE	LABOR FORCE	EMPLOYMENT	UNEMPLOYMENT LEVEL	UNEMPLOYMENT RATE
Cape Coral-Fort Myers MSA	361,821	347,319	14,502	4.0%	360,698	344,174	16,524	4.6%	340,022	319,239	20,783	6.1%
Crestview-Fort Walton Beach-Destin MSA	134,934	130,521	4,413	3.3%	136,082	130,936	5,146	3.8%	128,503	123,164	5,339	4.2%
Deltona-Daytona Beach-Ormond Beach MSA	310,242	296,756	13,486	4.3%	310,247	294,965	15,282	4.9%	294,268	275,792	18,476	6.3%
Gainesville MSA	151,674	146,392	5,282	3.5%	147,832	141,650	6,182	4.2%	143,488	136,989	6,499	4.5%
Homosassa Springs MSA	48,994	46,373	2,621	5.3%	49,184	46,087	3,097	6.3%	46,628	43,394	3,234	6.9%
Jacksonville MSA	834,734	803,734	31,000	3.7%	830,873	795,408	35,465	4.3%	783,566	742,835	40,731	5.2%
Lakeland-Winter Haven MSA	332,227	315,732	16,495	5.0%	330,423	311,798	18,625	5.6%	318,019	293,055	24,964	7.8%
Miami-Fort Lauderdale-West Palm Beach MSA	3,172,427	3,018,155	154,272	4.9%	3,171,550	2,993,969	177,581	5.6%	3,068,776	2,774,023	294,753	9.6%
Fort Lauderdale-Pompano Beach-Deerfield Beach MD	1,055,549	1,009,405	46,144	4.4%	1,058,060	1,006,112	51,948	4.9%	1,008,017	929,959	78,058	7.7%
Miami-Miami Beach-Kendall MD	1,365,072	1,287,962	77,110	5.6%	1,358,403	1,268,014	90,389	6.7%	1,352,247	1,182,171	170,076	12.6%
West Palm Beach-Boca Raton-Delray Beach MD	751,806	720,788	31,018	4.1%	755,087	719,843	35,244	4.7%	708,512	661,893	46,619	6.6%
Naples-Immokalee-Marco Island MSA	185,780	179,129	6,651	3.6%	185,910	178,097	7,813	4.2%	171,558	161,466	10,092	5.9%
North Port-Sarasota-Bradenton MSA	384,542	370,317	14,225	3.7%	383,122	366,489	16,633	4.3%	355,587	335,962	19,625	5.5%
Ocala MSA	145,928	139,024	6,904	4.7%	146,647	138,798	7,849	5.4%	138,920	130,506	8,414	6.1%
Orlando-Kissimmee-Sanford MSA	1,358,813	1,298,201	60,612	4.5%	1,346,852	1,279,369	67,483	5.0%	1,282,415	1,170,337	112,078	8.7%
Palm Bay-Melbourne-Titusville MSA	301,099	289,688	11,411	3.8%	300,152	287,341	12,811	4.3%	282,272	266,805	15,467	5.5%
Panama City MSA	94,022	90,662	3,360	3.6%	94,545	90,653	3,892	4.1%	89,050	84,845	4,205	4.7%
Pensacola-Ferry Pass-Brent MSA	242,253	232,880	9,373	3.9%	242,242	231,425	10,817	4.5%	227,933	216,324	11,609	5.1%
Port St. Lucie MSA	232,318	222,581	9,737	4.2%	232,923	221,646	11,277	4.8%	217,161	204,054	13,107	6.0%
Punta Gorda MSA	74,398	71,195	3,203	4.3%	74,625	70,919	3,706	5.0%	70,748	66,479	4,269	6.0%
Sebastian-Vero Beach MSA	67,939	64,842	3,097	4.6%	67,876	64,280	3,596	5.3%	63,003	59,019	3,984	6.3%
Sebring MSA	36,499	34,406	2,093	5.7%	36,534	34,151	2,383	6.5%	34,277	31,844	2,433	7.1%
Tallahassee MSA	200,169	192,016	8,153	4.1%	196,834	187,553	9,281	4.7%	191,671	181,714	9,957	5.2%
Tampa-St. Petersburg-Clearwater MSA	1,660,009	1,595,655	64,354	3.9%	1,644,148	1,570,831	73,317	4.5%	1,543,018	1,450,532	92,486	6.0%
The Villages MSA	33,333	31,473	1,860	5.6%	33,646	31,500	2,146	6.4%	31,875	29,737	2,138	6.7%
Florida (Not Seasonally Adjusted)	10,669,000	10,209,000	460,000	4.3%	10,627,000	10,101,000	526,000	4.9%	10,110,000	9,369,000	741,000	7.3%
Florida (Seasonally Adjusted)	10,593,000	10,076,000	517,000	4.9%	10,543,000	10,013,000	530,000	5.0%	10,053,000	9,334,000	719,000	7.2%
United States (Not Seasonally Adjusted)	161,392,000	154,026,000	7,366,000	4.6%	161,788,000	153,232,000	8,556,000	5.3%	160,073,000	147,796,000	12,277,000	7.7%
United States (Seasonally Adjusted)	161,354,000	153,680,000	7,674,000	4.8%	161,537,000	153,154,000	8,384,000	5.2%	160,078,000	147,543,000	12,535,000	7.8%

Released: Friday, October 22, 2021

NOTE: Items may not add to totals or compute to displayed percentages due to rounding. All data are subject to revision.

Source: U.S. Department of Labor, Bureau of Labor Statistics, Local Area Unemployment Statistics Program, in cooperation with the Florida Department of Economic Opportunity, Bureau of Workforce Statistics and Economic Research.

STATE OF FLORIDA
COUNTIES RANKED BY UNEMPLOYMENT RATE
(NOT SEASONALLY ADJUSTED)
SEPTEMBER 2021 (PRELIMINARY)

1	Hendry County	6.7%
2	Putnam County	5.9%
3	Highlands County	5.7%
4	Hamilton County	5.6%
4	Miami-Dade County	5.6%
4	Sumter County	5.6%
7	Osceola County	5.4%
8	Citrus County	5.3%
8	Gadsden County	5.3%
10	Hardee County	5.1%
11	Polk County	5.0%
12	Hernando County	4.8%
13	Marion County	4.7%
14	Indian River County	4.6%
14	Liberty County	4.6%
14	Madison County	4.6%
14	St. Lucie County	4.6%
	United States	4.6%
18	Orange County	4.5%
19	Broward County	4.4%
19	Flagler County	4.4%
21	Calhoun County	4.3%
21	Charlotte County	4.3%
21	Jackson County	4.3%
21	Jefferson County	4.3%
21	Lake County	4.3%
21	Levy County	4.3%
21	Suwannee County	4.3%
21	Taylor County	4.3%
21	Volusia County	4.3%
	Florida	4.3%
30	Escambia County	4.2%
30	Okeechobee County	4.2%
32	Columbia County	4.1%
32	Duval County	4.1%
32	Palm Beach County	4.1%
32	Pasco County	4.1%
32	Washington County	4.1%
37	Holmes County	4.0%
37	Lee County	4.0%
37	Leon County	4.0%

STATE OF FLORIDA
COUNTIES RANKED BY UNEMPLOYMENT RATE
(NOT SEASONALLY ADJUSTED)
SEPTEMBER 2021 (PRELIMINARY)

40	Bradford County	3.9%
40	Dixie County	3.9%
40	Hillsborough County	3.9%
43	Brevard County	3.8%
43	Seminole County	3.8%
45	DeSoto County	3.7%
45	Glades County	3.7%
45	Lafayette County	3.7%
45	Manatee County	3.7%
45	Sarasota County	3.7%
45	Union County	3.7%
51	Baker County	3.6%
51	Bay County	3.6%
51	Collier County	3.6%
51	Franklin County	3.6%
51	Gilchrist County	3.6%
51	Pinellas County	3.6%
57	Alachua County	3.5%
58	Gulf County	3.4%
58	Martin County	3.4%
58	Walton County	3.4%
61	Clay County	3.3%
61	Santa Rosa County	3.3%
63	Nassau County	3.2%
63	Okaloosa County	3.2%
65	Wakulla County	3.1%
66	St. Johns County	2.9%
67	Monroe County	2.6%

Source: U.S. Department of Labor, Bureau of Labor Statistics, Local Area Unemployment Statistics Program,
in cooperation with the Florida Department of Economic Opportunity, Bureau of Workforce Statistics and Economic Research.
Released: Friday, October 22, 2021

NOTE: All data are subject to revision.

STATE OF FLORIDA
 METROPOLITAN STATISTICAL AREAS (MSAs) AND METROPOLITAN DIVISIONS (MDs)
 RANKED BY UNEMPLOYMENT RATE
 (NOT SEASONALLY ADJUSTED)
 SEPTEMBER 2021 (PRELIMINARY)

1	Sebring MSA	5.7%
2	Miami-Miami Beach-Kendall MD	5.6%
2	The Villages MSA	5.6%
4	Homosassa Springs MSA	5.3%
5	Lakeland-Winter Haven MSA	5.0%
6	Ocala MSA	4.7%
7	Sebastian-Vero Beach MSA	4.6%
	United States	4.6%
8	Orlando-Kissimmee-Sanford MSA	4.5%
9	Fort Lauderdale-Pompano Beach-Deerfield Beach MD	4.4%
10	Deltona-Daytona Beach-Ormond Beach MSA	4.3%
10	Punta Gorda MSA	4.3%
	Florida	4.3%
12	Port St. Lucie MSA	4.2%
13	Tallahassee MSA	4.1%
13	West Palm Beach-Boca Raton-Delray Beach MD	4.1%
15	Cape Coral-Fort Myers MSA	4.0%
16	Pensacola-Ferry Pass-Brent MSA	3.9%
16	Tampa-St. Petersburg-Clearwater MSA	3.9%
18	Palm Bay-Melbourne-Titusville MSA	3.8%
19	Jacksonville MSA	3.7%
19	North Port-Sarasota-Bradenton MSA	3.7%
21	Naples-Immokalee-Marco Island MSA	3.6%
21	Panama City MSA	3.6%
23	Gainesville MSA	3.5%
24	Crestview-Fort Walton Beach-Destin MSA	3.3%

Released: Friday, October 22, 2021

NOTE: All data are subject to revision.

Source: U.S. Department of Labor, Bureau of Labor Statistics, Local Area Unemployment Statistics Program, in cooperation with the Florida Department of Economic Opportunity, Bureau of Workforce Statistics and Economic Research.

TOTAL NONAGRICULTURAL EMPLOYMENT
FLORIDA (Not Seasonally Adjusted)

Area	September 2021	August 2021	September 2020	Over-the-Month Change		Over-the-Year Change	
				Level	Percent	Level	Percent
Statewide	8,836,200	8,756,000	8,399,700	80,200	0.9%	436,500	5.2%
Cape Coral-Fort Myers MSA	274,400	272,300	262,300	2,100	0.8%	12,100	4.6%
Crestview-Fort Walton Beach-Destin MSA	118,000	118,500	116,200	-500	-0.4%	1,800	1.5%
Deltona-Daytona Beach-Ormond Beach MSA	203,200	202,700	197,700	500	0.2%	5,500	2.8%
Fort Lauderdale-Pompano Beach-Deerfield Beach MD	827,800	826,800	796,500	1,000	0.1%	31,300	3.9%
Gainesville MSA	146,800	142,000	142,500	4,800	3.4%	4,300	3.0%
Homosassa Springs MSA	32,800	32,700	32,000	100	0.3%	800	2.5%
Jacksonville MSA	736,100	730,700	705,800	5,400	0.7%	30,300	4.3%
Lakeland-Winter Haven MSA	247,000	244,500	239,100	2,500	1.0%	7,900	3.3%
Miami-Ft. Lauderdale-West Palm Beach MSA	2,613,400	2,610,100	2,494,200	3,300	0.1%	119,200	4.8%
Miami-Miami Beach-Kendall MD	1,163,600	1,160,900	1,102,200	2,700	0.2%	61,400	5.6%
Naples-Immokalee-Marco Island MSA	152,800	152,100	143,900	700	0.5%	8,900	6.2%
North Port-Sarasota-Bradenton MSA	312,000	309,300	294,600	2,700	0.9%	17,400	5.9%
Ocala MSA	108,300	108,300	105,800	0	0.0%	2,500	2.4%
Orlando-Kissimmee-Sanford MSA	1,249,500	1,234,500	1,167,900	15,000	1.2%	81,600	7.0%
Palm Bay-Melbourne-Titusville MSA	234,600	233,200	224,500	1,400	0.6%	10,100	4.5%
Panama City MSA	81,500	81,600	79,300	-100	-0.1%	2,200	2.8%
Pensacola-Ferry Pass-Brent MSA	187,700	186,900	181,600	800	0.4%	6,100	3.4%
Port St. Lucie MSA	158,200	157,600	150,700	600	0.4%	7,500	5.0%
Punta Gorda MSA	48,800	49,100	48,200	-300	-0.6%	600	1.2%
Sebastian-Vero Beach MSA	53,600	53,200	51,000	400	0.8%	2,600	5.1%
Sebring MSA	25,600	25,500	24,500	100	0.4%	1,100	4.5%
Tallahassee MSA	181,600	177,500	179,400	4,100	2.3%	2,200	1.2%
Tampa-St. Petersburg-Clearwater MSA	1,412,400	1,395,000	1,332,500	17,400	1.2%	79,900	6.0%
The Villages MSA	31,100	31,500	31,200	-400	-1.3%	-100	-0.3%
West Palm Beach-Boca Raton-Delray Beach MD	622,000	622,400	595,500	-400	-0.1%	26,500	4.5%

Note: Employment estimates have been rounded to the nearest hundred. Sum of detail may not equal totals due to rounding or the exclusion of certain industries from publication. All data are subject to revision. October 22, 2021.

Source: U.S. Department of Labor, Bureau of Labor Statistics, Current Employment Statistics Program.

Prepared by: Florida Department of Economic Opportunity, Bureau of Workforce Statistics and Economic Research.