



# Courthouse

July 9, 2024

# Agenda

- Potential programs
- Considerations
- Current floor plan
- Future floor plan
- Parking
- Fencing
- Traffic flow
- Timeline
- Budget
- Next steps



# Programs

- Rise Up
- iFlagler Admin & Teachers
- Federal Programs
- TRAIL
- Ed Foundation Stuff Bus Storage
- Step Up (AWD)



# Considerations



- Growth areas in district - Bunnell Elementary and Rymfire Elementary
- Need for classroom space
- Aging portables
- Cost for new portables rising
- Expansion of Rise Up needing additional classrooms
- Centralized location for iFlagler, not split across district
- Increasing our capacity by 10 classrooms currently used in schools
- Phasing in - Sep 2024 - Jan 2025

# 1st Floor Current

- 11 Classrooms
- 6 Offices
- 1 large conf rm
- 4 Single Bathrooms
- 2 Multi Bathrooms



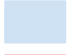
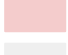
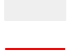



 Bathrooms

# 1st Floor Future



- 7 Classrooms
- 7 Offices
- 1 large conf rm
- 1 Cafe
- 4 Single Bathrooms
- 2 Multi Bathrooms

-  Bathrooms
-  AWD
-  Common Area
-  TRAIL
-  Mechanical / Support
-  New wall / door / window



# 2nd Floor Current

- 9 Classrooms
- 6 Offices
- 1 large conf rm
- 1 Assembly rm
- 10 Single Bathrooms
- 2 Multi Bathrooms

 Bathrooms



# 2nd Floor Future



- 7 Classrooms
- 7 Offices
- 1 large conf rm
- 1 Assembly rm
- 10 Single Bathrooms
- 2 Multi Bathrooms



- Bathrooms
- Federal Programs
- Common Area
- Rise Up / iFlagler
- TRAIL



# 3rd Floor Current



- 10 Classrooms
- 0 Offices
- 1 Kitchen
- 1 Cafeteria
- 1 Single Bathroom
- 2 Multi Bathrooms

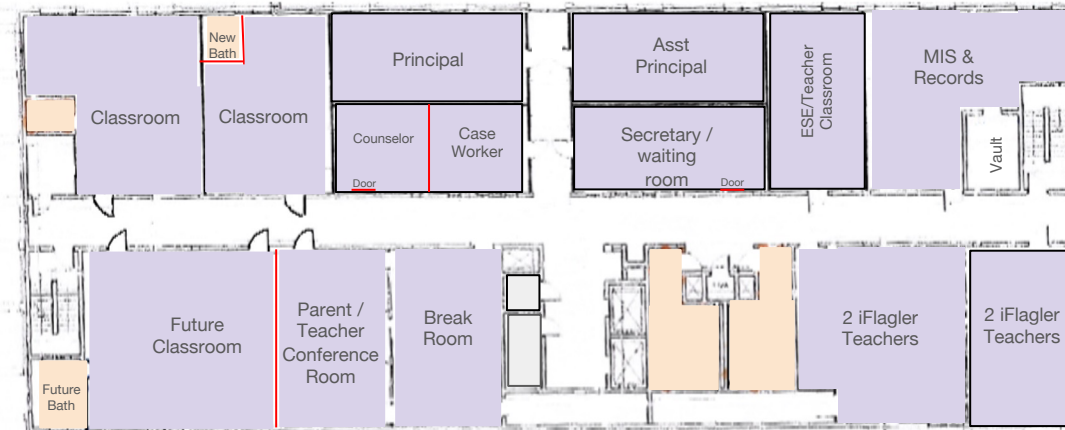



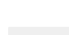
 Bathrooms

# 3rd Floor Future



- 4 Classrooms
- 8 Offices
- 1 Break Room
- 1 Conference Rm
- 3 Single Bathrooms
- 2 Multi Bathrooms



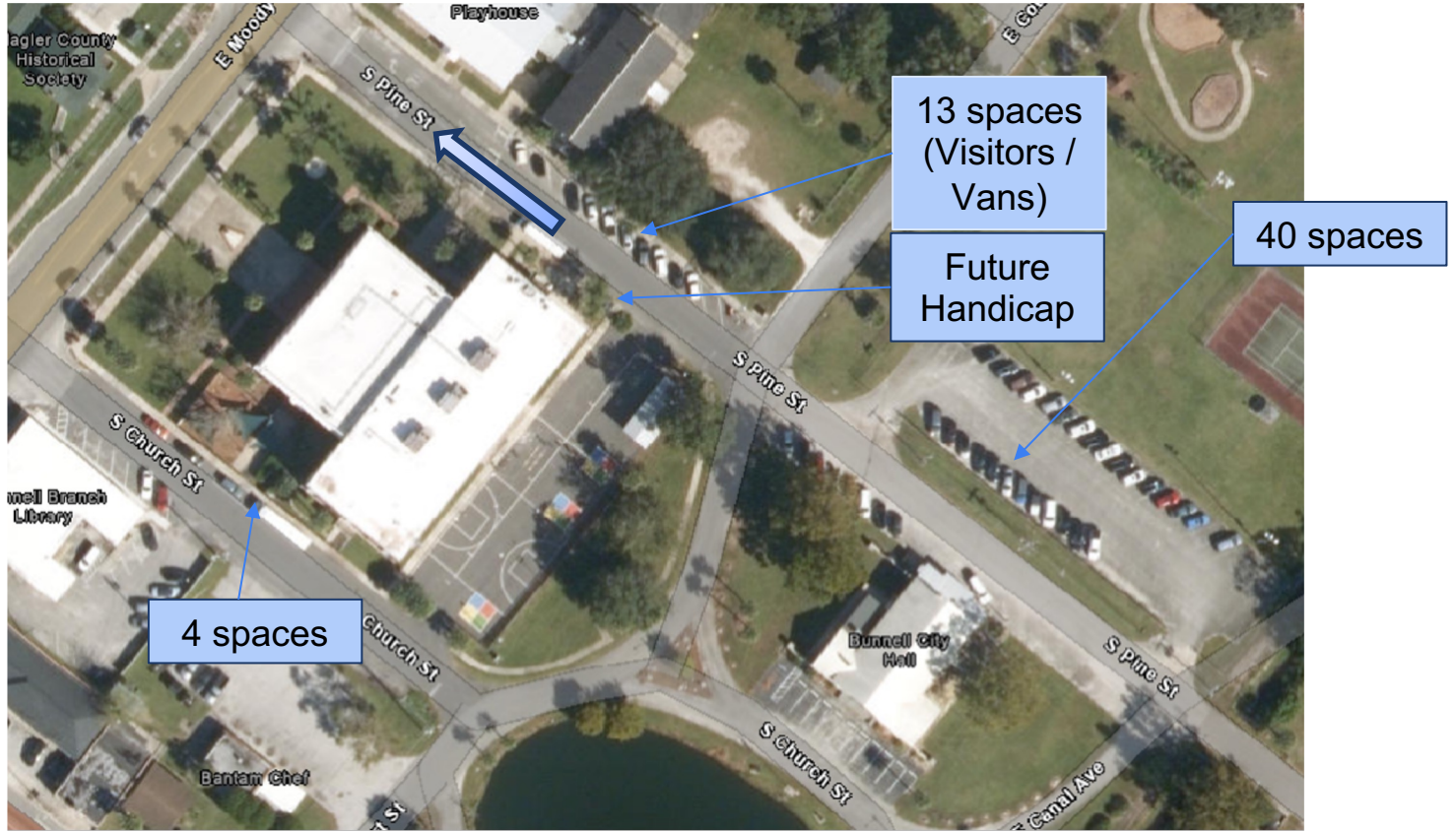
-  Bathrooms
-  Common Area
-  Rise Up / iFlagler
-  Mechanical / Support
-  New wall / door / window



# Parking




57 Parking spaces



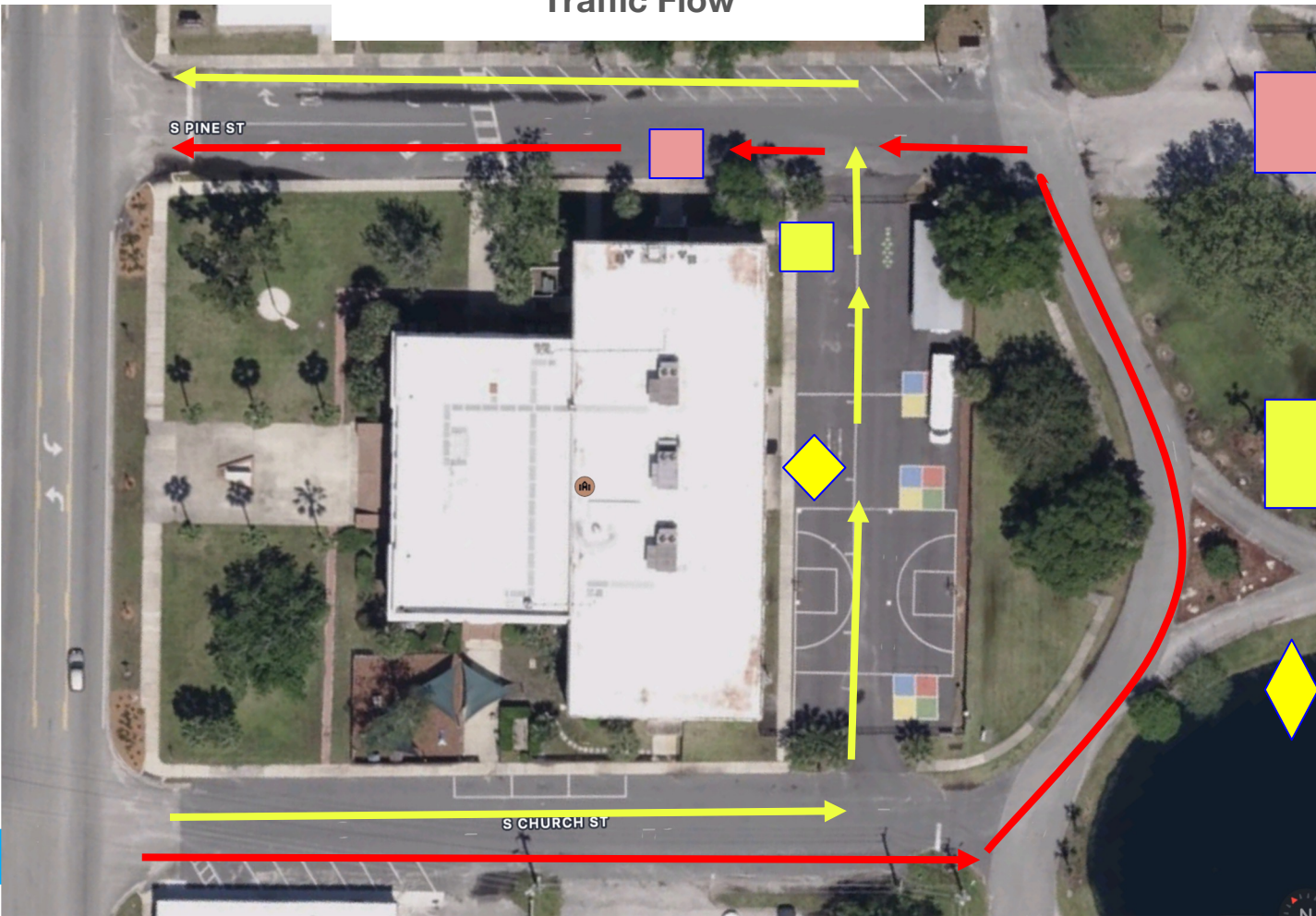
# Fencing



-  New fencing
-  Existing fencing
-  Gates



# Traffic Flow



Car Rider



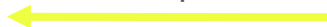
Drop off and (pick up)

**Rise Up / AWD**

R - 0750 - 0800 (1100 - 1115)

A - 0830 - 0900 (1300 - 1345)

Transportation



Rise Up

Bus drop off and (pick up)

**Flagler Schools Bus**

0750 - 0800 (1100 - 1115)

1150 - 1200 (1500 - 1515)

**AWD / TRAIL**

Bus drop off and (pick up)

**Public Transportation**

A 0830 - 0900 (1330 - 1345)

T 0900 - 0930 (1445 - 1500)

# Timeline



## Sep 2024

- Sign Lease
- Demo

## Oct 2024

- Build /Construction

## Nov 2024

- Painting
- Network
- Phones

## Dec 2024

- Cleaning
- Moving

## Jan 2025

- Moving
- Start up
- Prep to remove portables

# Fiscal Impact



<b>Courthouse</b>		
	<b>Monthly</b>	<b>Annually</b>
Rent	\$7,676	\$92,112
Utilities	\$10,000	\$120,000
<b>Portables</b>		
Current Rent (9 portables)	\$6,244	\$74,900
Utilities	\$10,622	\$127,465
Future Rent (Replacement Cost)	\$1,770	\$21,240
Return Charge for 9 portables (\$4,842 each for a total of \$43,578)		
<b>Potential Classrooms Recovered</b>		
10 Potential classrooms (3 BES 7 RES)		
Total 10 classroom portables	\$17,700	\$212,240 10 yrs - \$2,122,400

# Budget

## Court House Remodel

Outside	\$ 58,500
1st Floor	\$ 265,340
2nd Floor	\$ 83,290
3rd Floor	\$ 89,200
Sub Total	\$ 496,330
Design & Contegnecy	\$ 136,047
<b>Project Total</b>	<b>\$ 632,377</b>



# Next Steps

- Facilities assessment
  - Structure & Air Quality
- Program / floor plan review
- Determine staffing front lobby
- Confirm cost assessment
- Discuss with Flagler County
- Confirm phase timeline for moving





# Questions