



Courthouse

May 21, 2024

Historic County Courthouse

- Owned by Flagler County
- Approximately 50,000 sqft (1924 ~ 13,000+; 1985 ~ 36,000+)
- Built – 1924 & 1985
- 2 Story in 1924 bldg; 3 Story in 1985 bldg.
- 30 classrooms; 14+ offices
- Currently leased by First Baptist Christian Academy
- First Baptist will vacate August / September 2024
- Potential location for Flagler Schools



Potential Programs

- Rise Up
- iFlagler Admin & Teachers
- Federal Programs
- TRAIL
- Ed Foundation Stuff Bus Storage
- FTC Child Care & Classrooms
- Step Up (AWD)



Considerations



- Growth areas in district - Bunnell Elementary and Rymfire Elementary
- Need for classroom space
- Aging portables
- Cost for new portables rising
- Expansion of Rise Up needing additional classrooms
- Centralized location for iFlagler, not split across district
- Increasing our capacity by 10 classrooms currently used in schools
- Phasing in - Slow roll.

Fiscal Impact

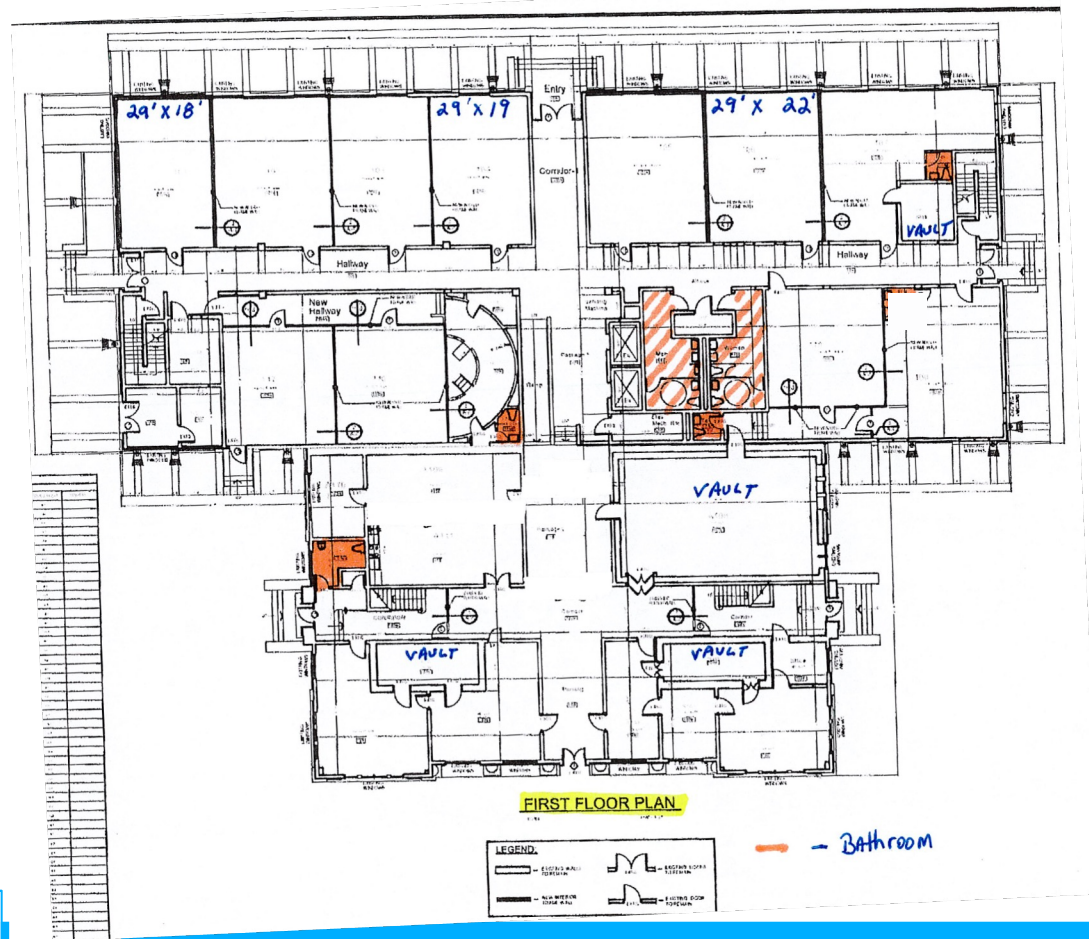


Courthouse		
	Monthly	Annually
Rent	\$7,676	\$92,112
Utilities	\$10,000	\$120,000
Portables		
Current Rent (9 portables)	\$6,244	\$74,900
Utilities	\$10,622	\$127,465
Future Rent (Replacement Cost)	\$1,770	\$21,240
Return Charge for 9 portables (\$4,842 each for a total of \$43,578)		
Potential Classrooms Recovered		
10 Potential classrooms (3 BES 7 RES)		
Total 10 classroom portables	\$17,700	\$212,240

1st Floor



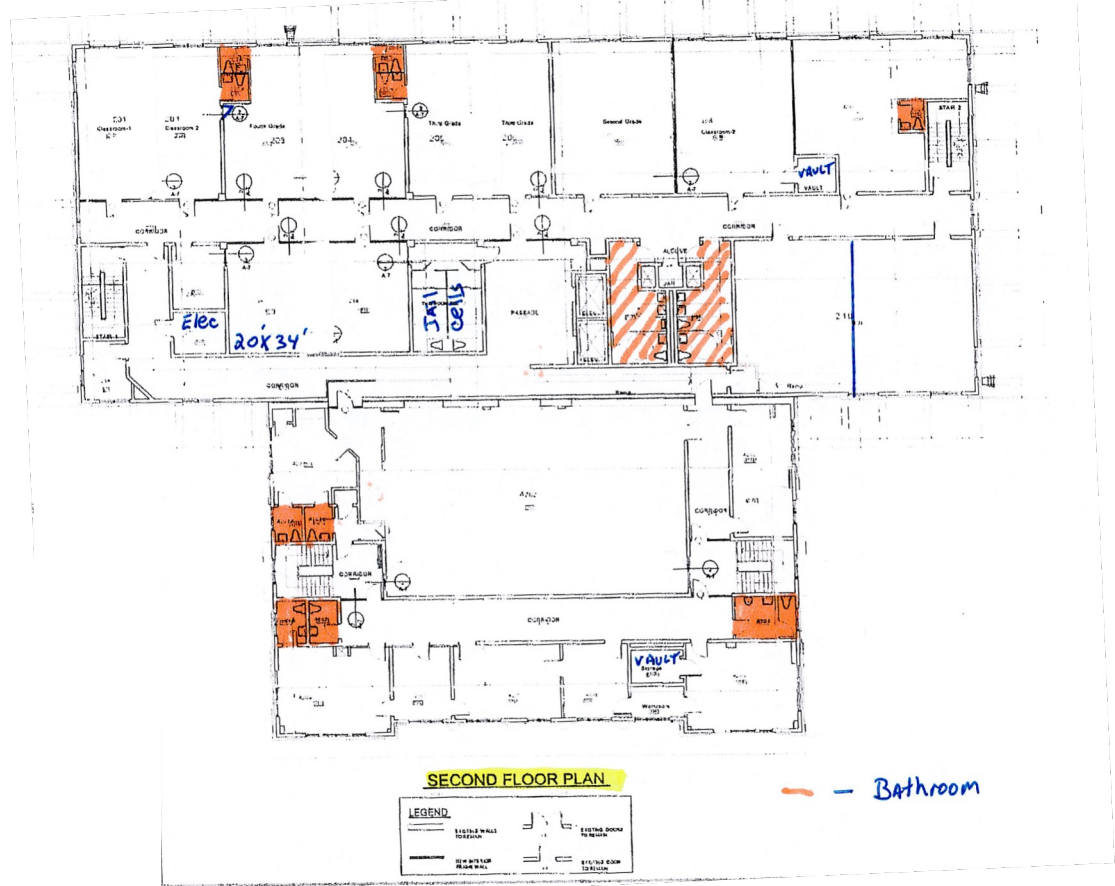
- 11 Classrooms
- 6 Offices
- 1 large conf rm



2nd Floor



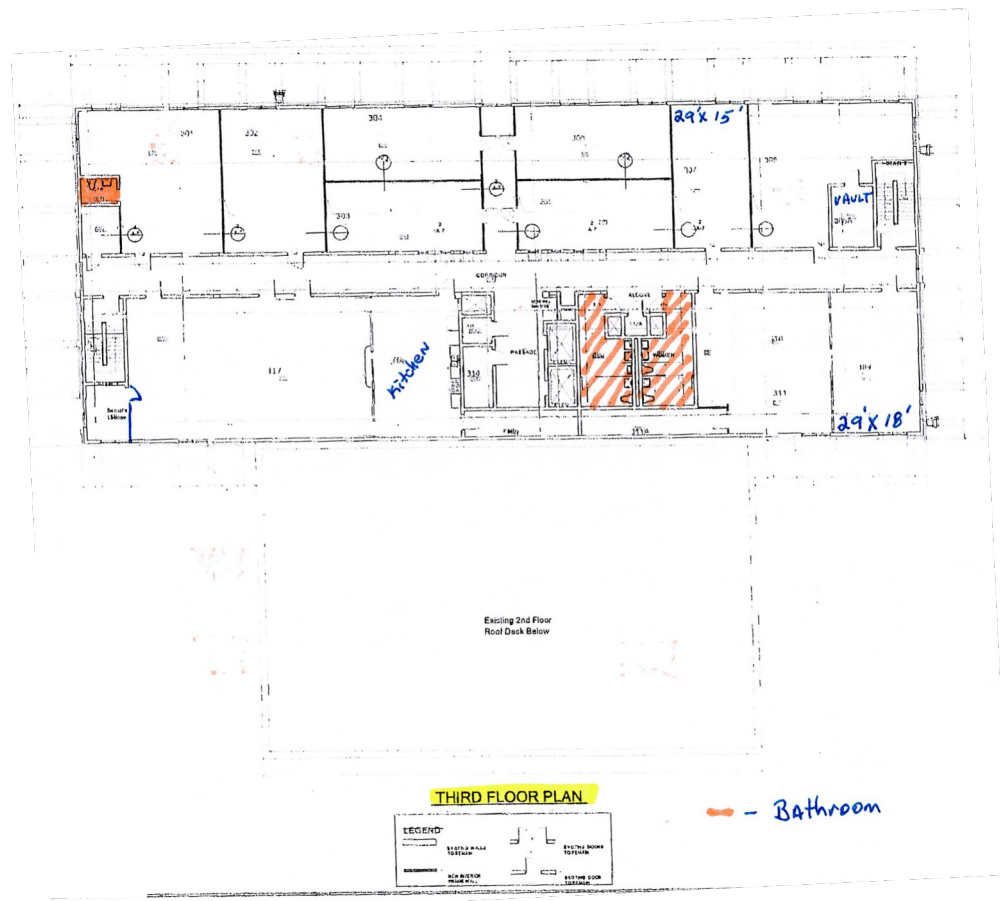
- 9 Classrooms
- 6 Offices
- 1 large conf rm
- 1 Assembly rm



3rd Floor



- 10 Classrooms
- 0 Offices
- 1 Kitchen
- 1 Cafeteria



Next Steps

- Facilities assessment
 - Fiber
 - HVAC
 - Plumbing
- Program / floor plan review
- Staffing front lobby
- Cost assessment
- Discuss with Flagler County
- Develop phase timeline for moving





Questions