

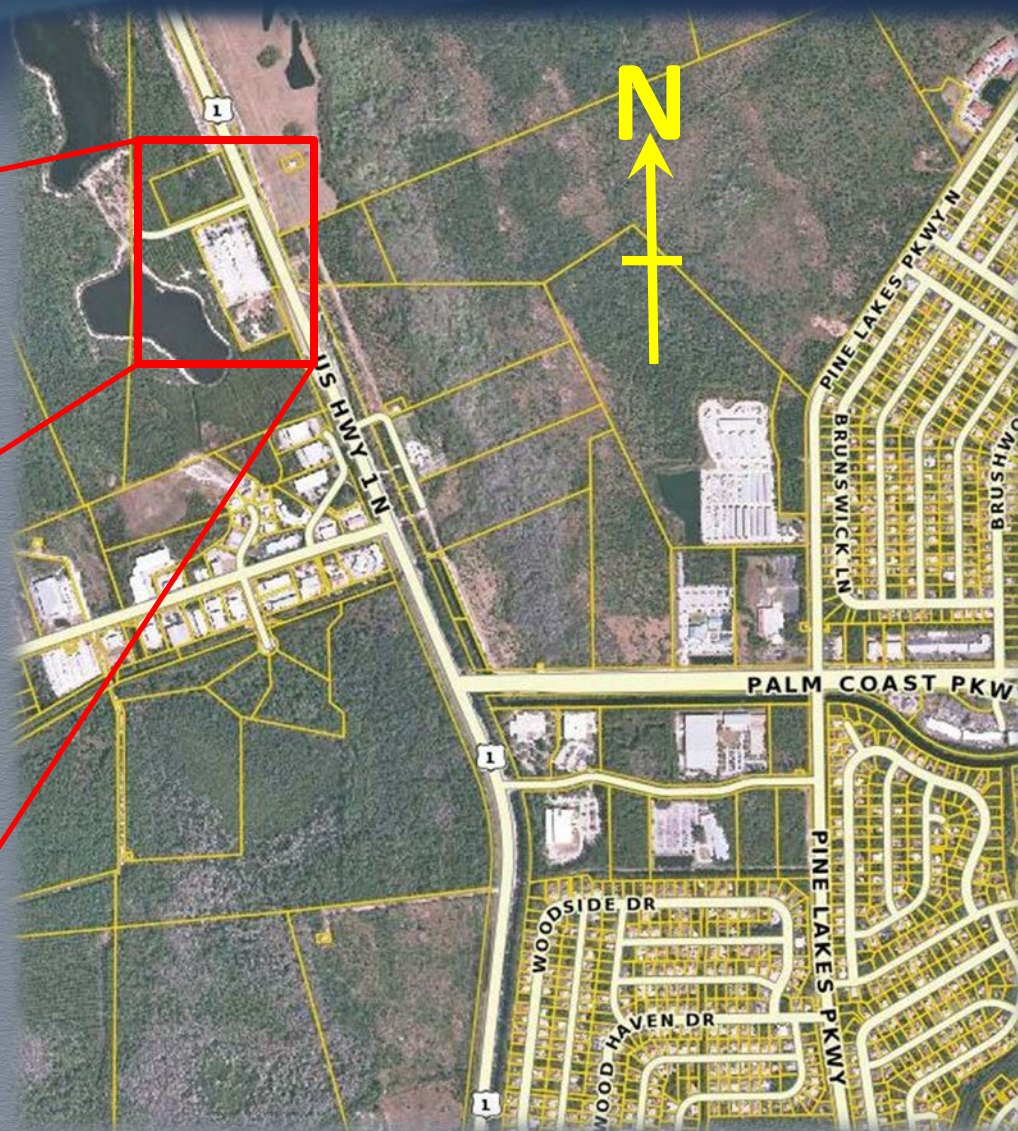


PUBLIC WORKS MASTER PLAN PROPOSAL



Find Your Florida

FACILITY LOCATION



FACILITY HISTORY

- FACILITY ACQUIRED FROM FLAGLER COUNTY IN 1999
- NO MAJOR IMPROVEMENTS TO FACILITY SINCE ACQUISITION

COMPONENTS OF PUBLIC WORKS

- SKILLED WORKFORCE
- PHYSICAL ASSETS: TRUCKS, HEAVY EQUIPMENT & HANDHELD EQUIPMENT
- FACILITY

STREETS

- MAINTENANCE OF ROADS, ROW AND BRIDGES
- PAVING AND CONSTRUCTION PROJECTS
- TRAFFIC SIGNALS AND ROAD SIGNAGE
- EQUIPMENT OPERATORS (32) & TRAFFIC SIGNAL TECH (3)



STORMWATER DRAINAGE

- MAINTENANCE OF ROADSIDE SWALE, DITCHES AND ROAD CULVERTS
- EQUIPMENT OPERATORS (20)



PARKS & LANDSCAPE

- MAINTENANCE OF CITY PARKS, ATHLETIC FIELDS, TRAILS AND LANDSCAPE MEDIANS
- EQUIPMENT OPERATORS (34)



FACILITIES

- MAINTENANCE AND UPKEEP OF ALL CITY FACILITIES
- EQUIPMENT OPERATORS (2)



FLEET

- ACQUISITION AND MAINTENANCE OF 1,380 CITY-OWNED VEHICLES AND EQUIPMENT
- MECHANICS (7)



FLEET MAINTENANCE AND REPAIR

220 LIGHT VEHICLES



FLEET MAINTENANCE & REPAIR

352 PIECES OF HEAVY EQUIPMENT



FLEET MAINTENANCE & REPAIR

33 FIRE TRUCKS AND TRAILERS



PALM COAST
Find Your Florida

FLEET MAINTENANCE AND REPAIR

79 MOWERS



FLEET MAINTENANCE & REPAIR

700 PIECES OF HANDHELD EQUIPMENT



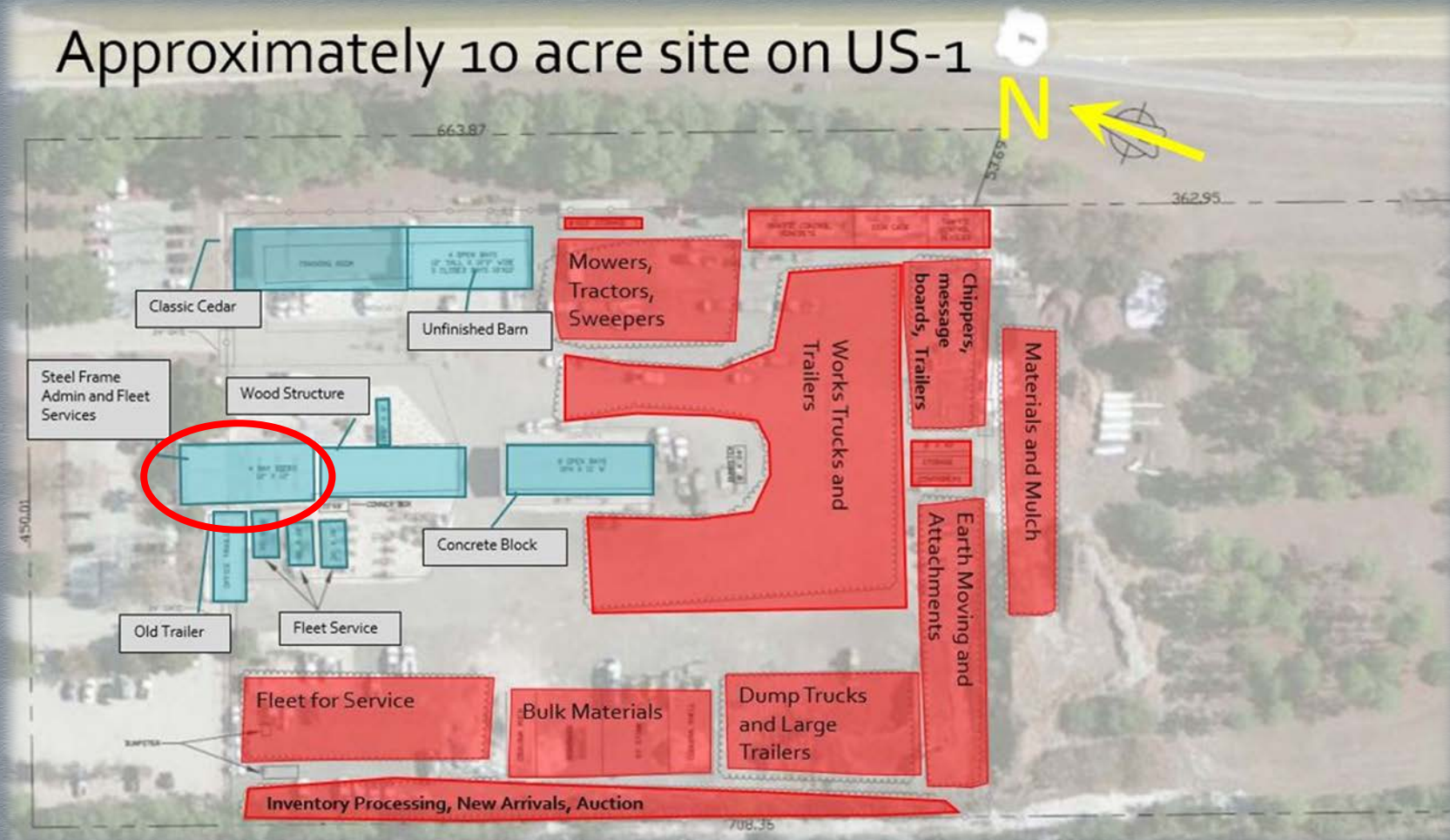
WEST YARD AREA



EAST YARD AREA



ADMINISTRATION AND FLEET SERVICES



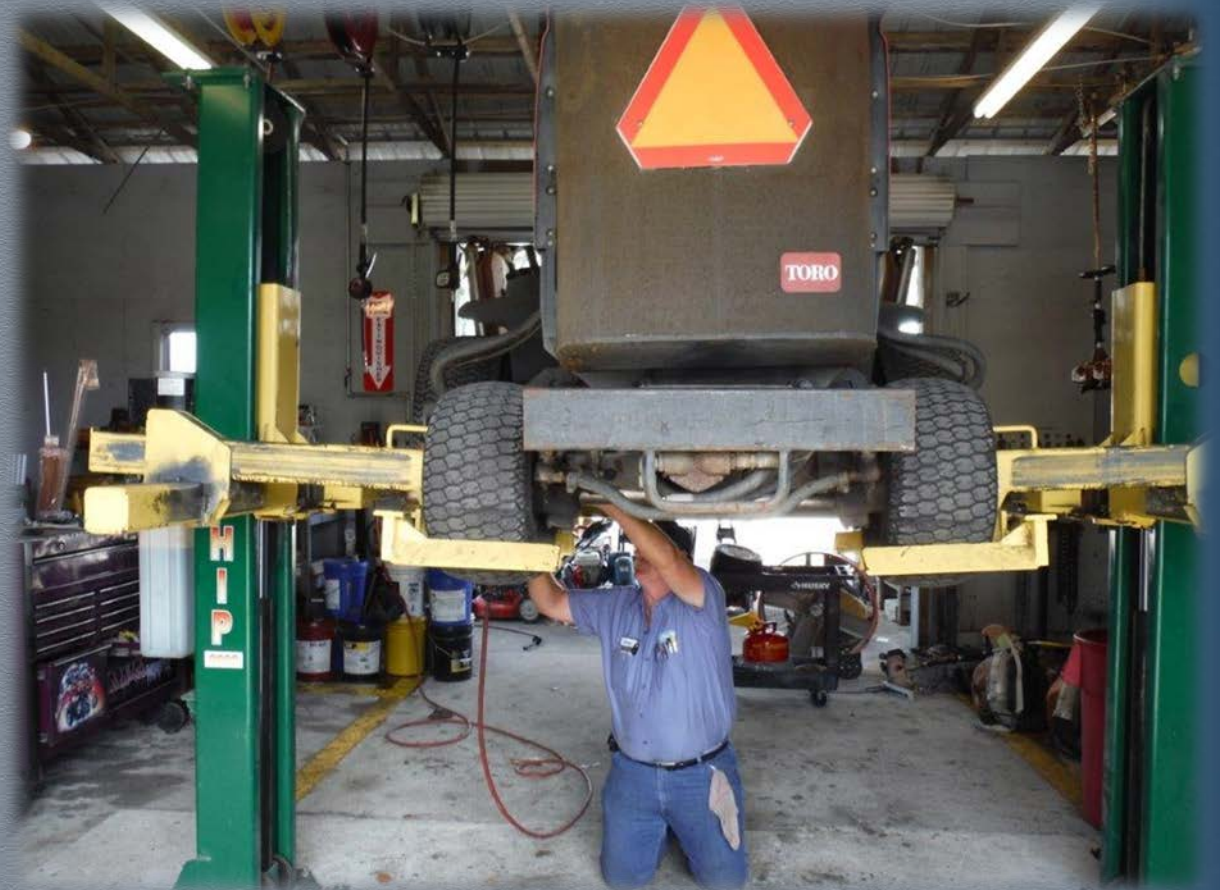
ADMINISTRATION AND FLEET SERVICES



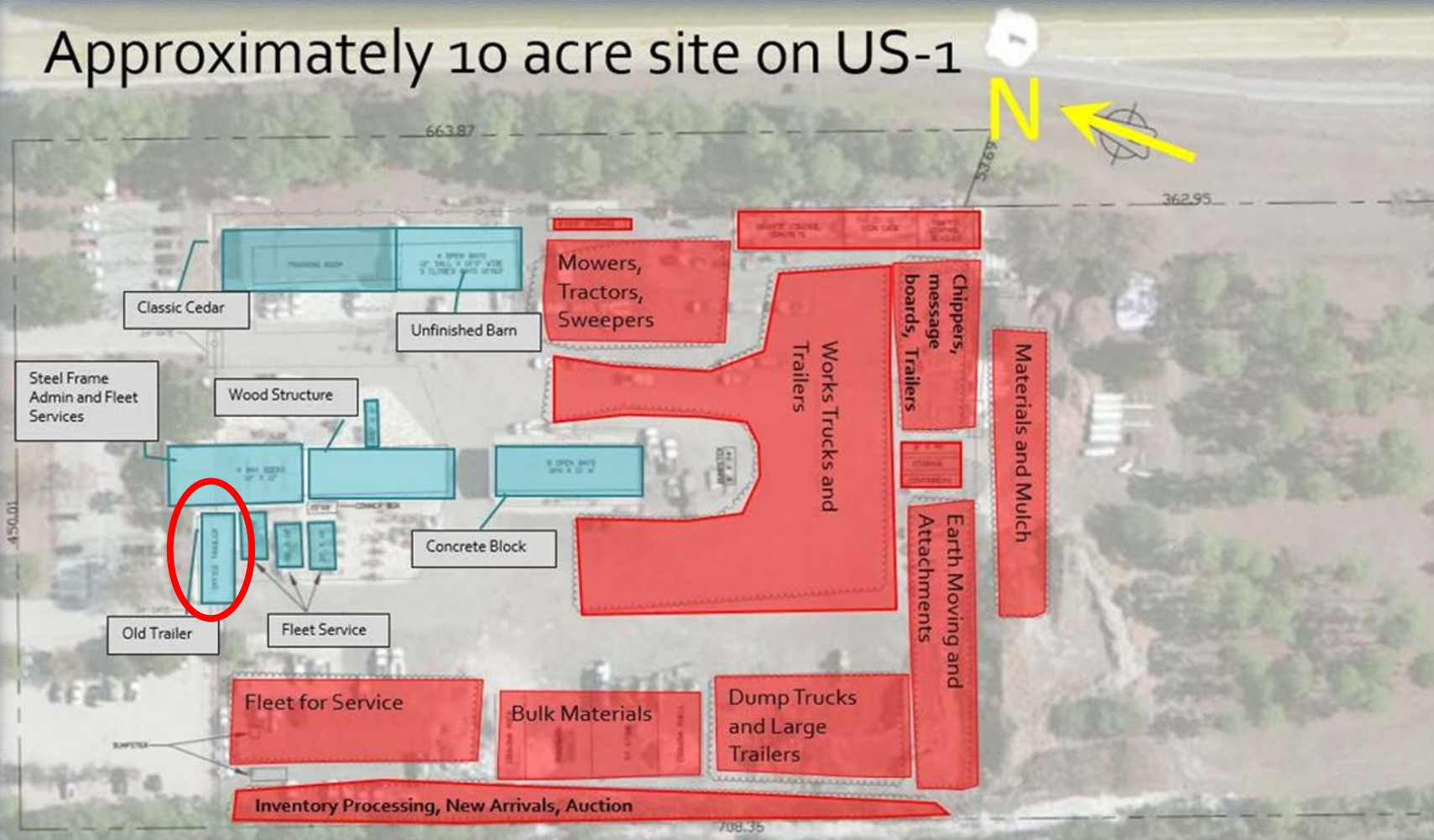
FLEET SERVICES



FLEET SERVICES



Approximately 10 acre site on US-1



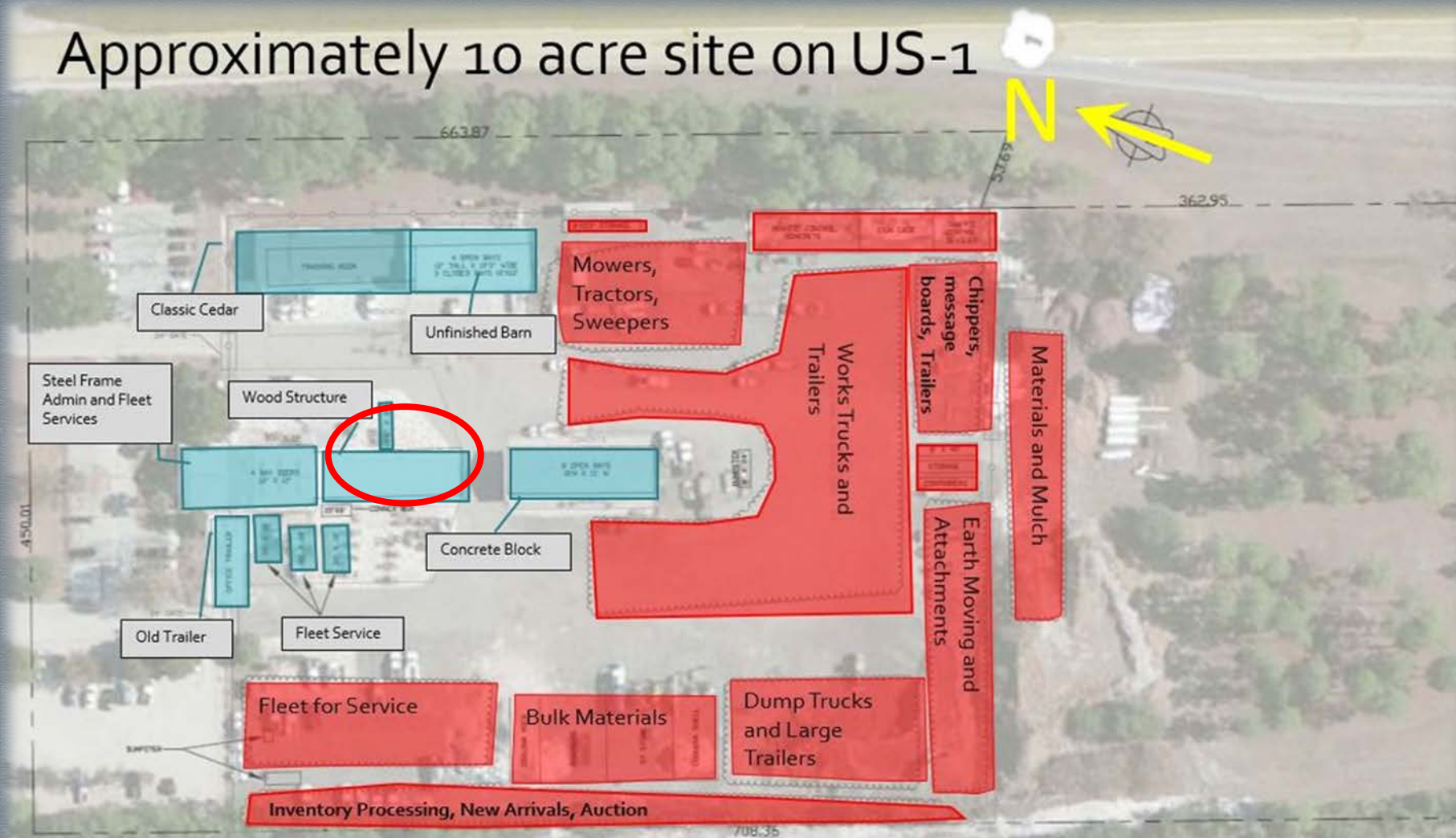
OFFICE TRAILER

OFFICE TRAILER



WOODEN STRUCTURE

Approximately 10 acre site on US-1

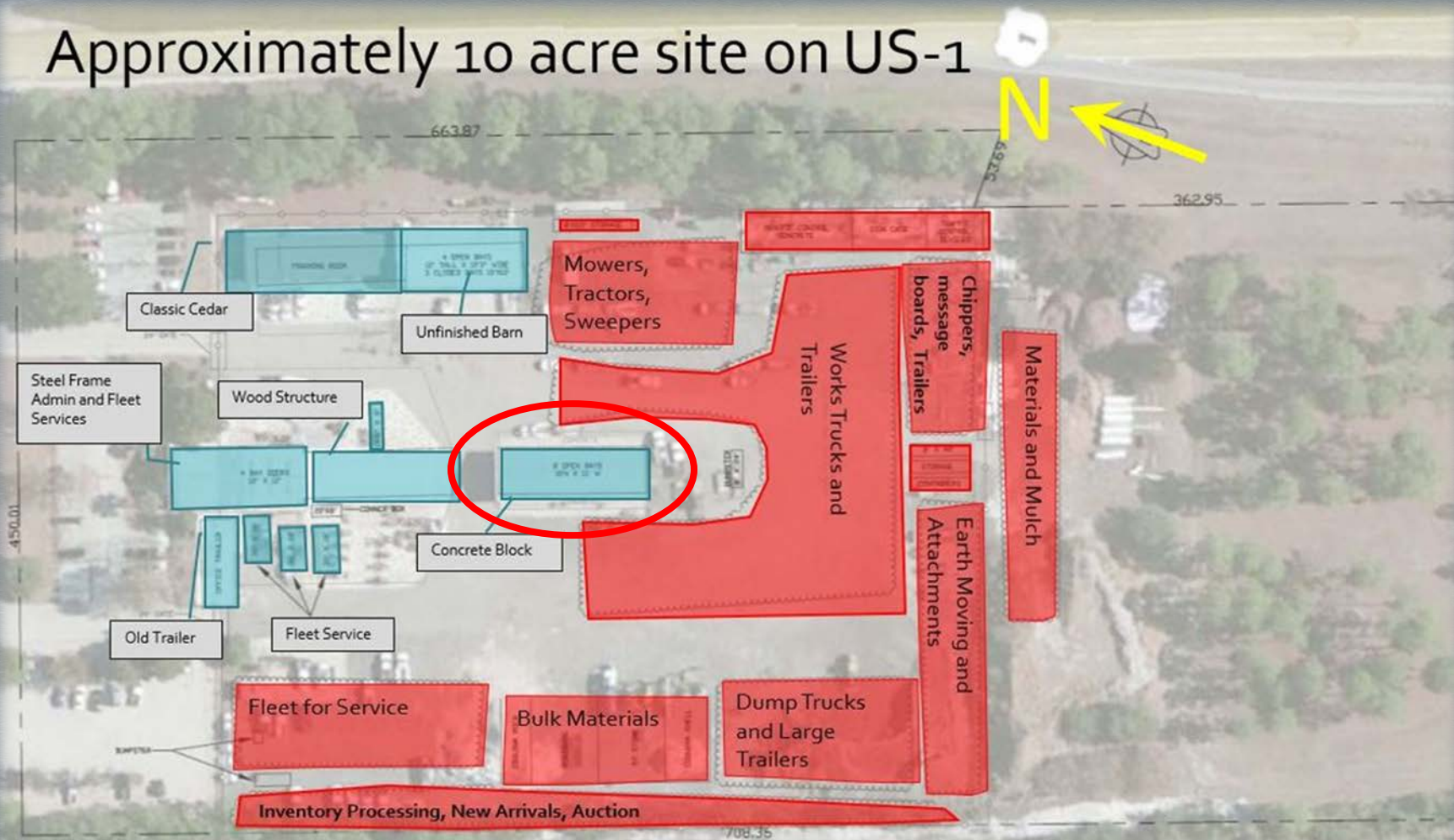


WOODEN STRUCTURE



CONCRETE BLOCK STRUCTURE

Approximately 10 acre site on US-1

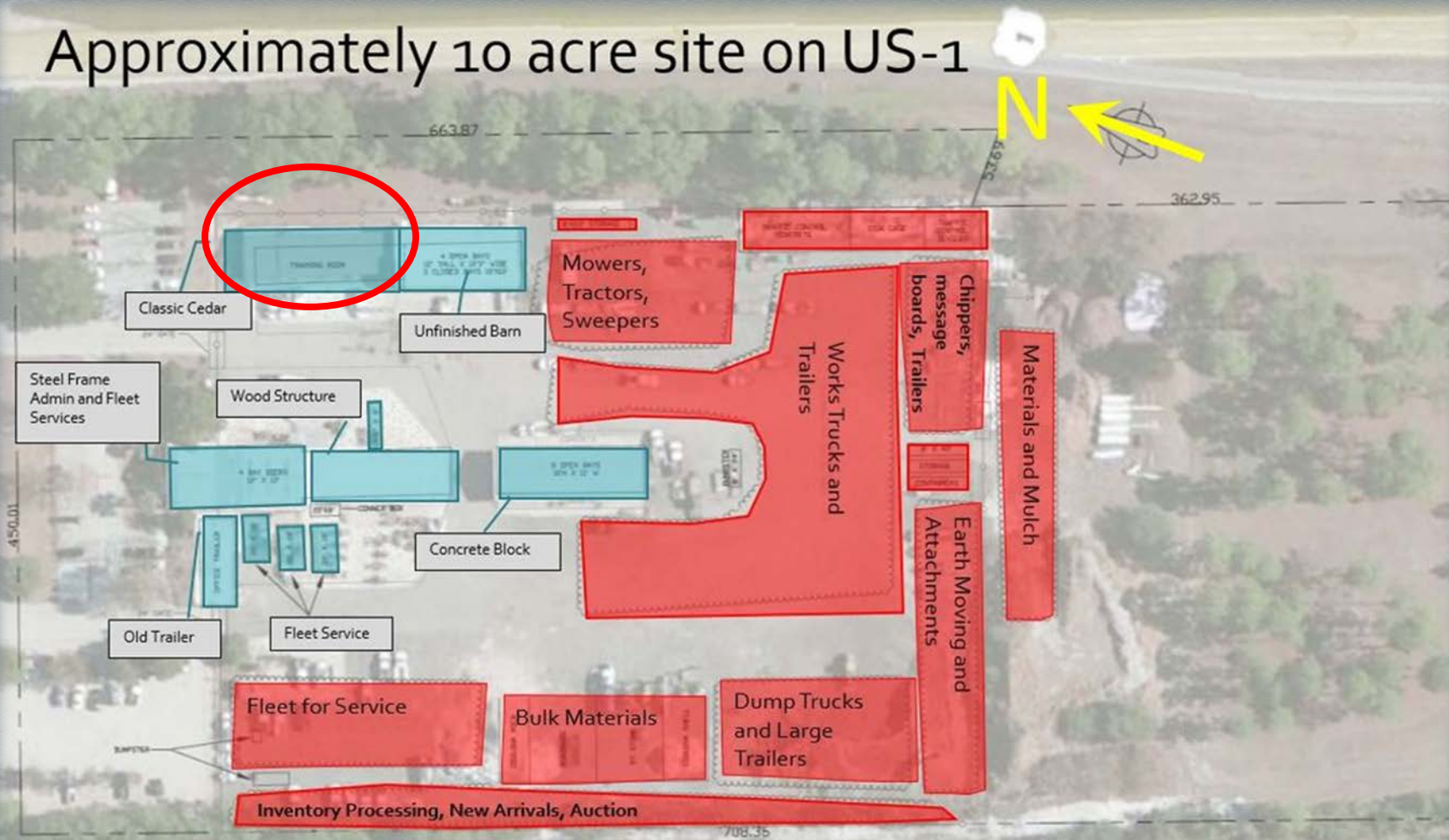


REPURPOSED CONCRETE BLOCK STRUCTURE



CEDAR STRUCTURE

Approximately 10 acre site on US-1

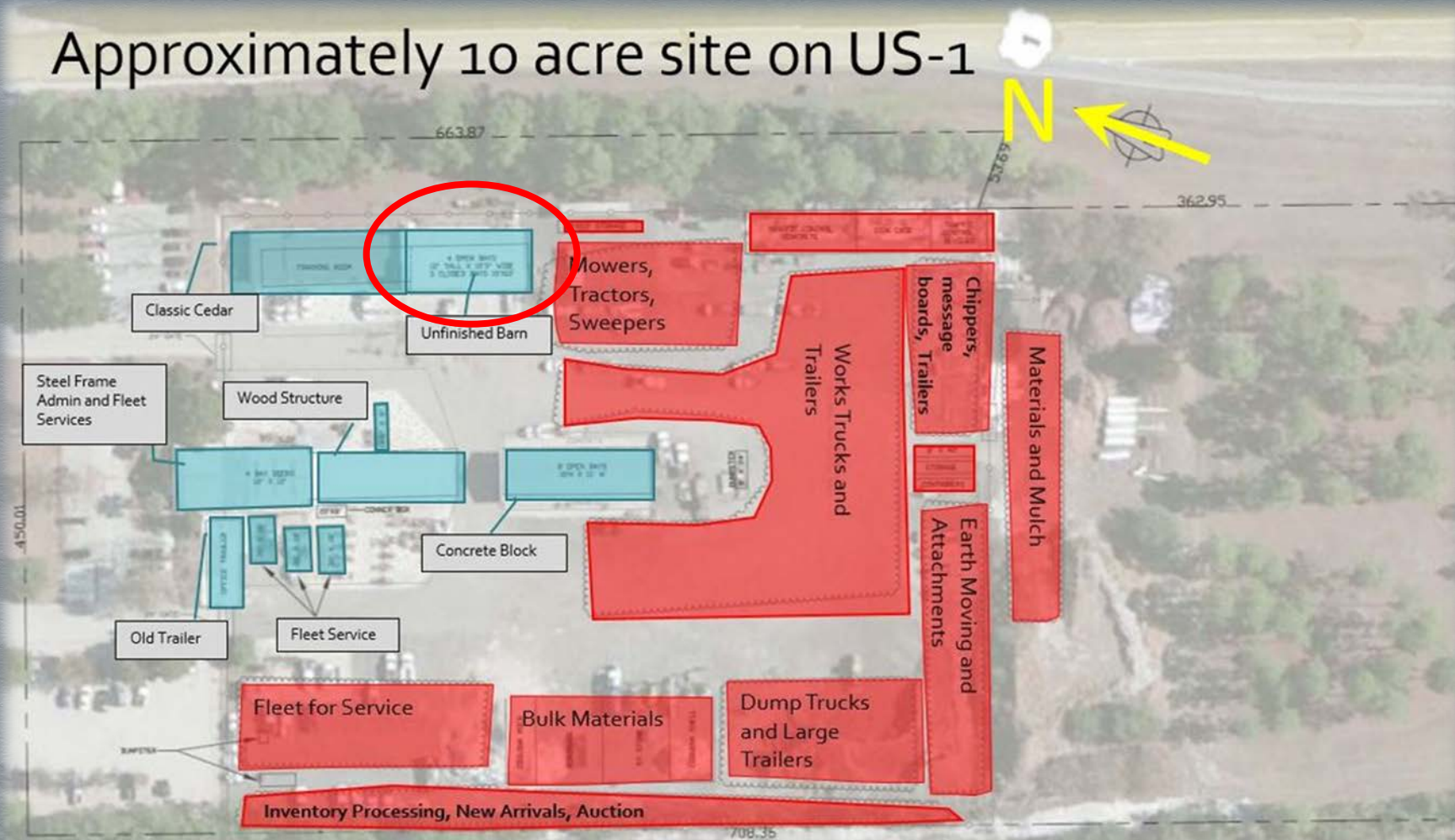


MULTI-PURPOSE CEDAR STRUCTURE



UNFINISHED OPEN POLE BARN

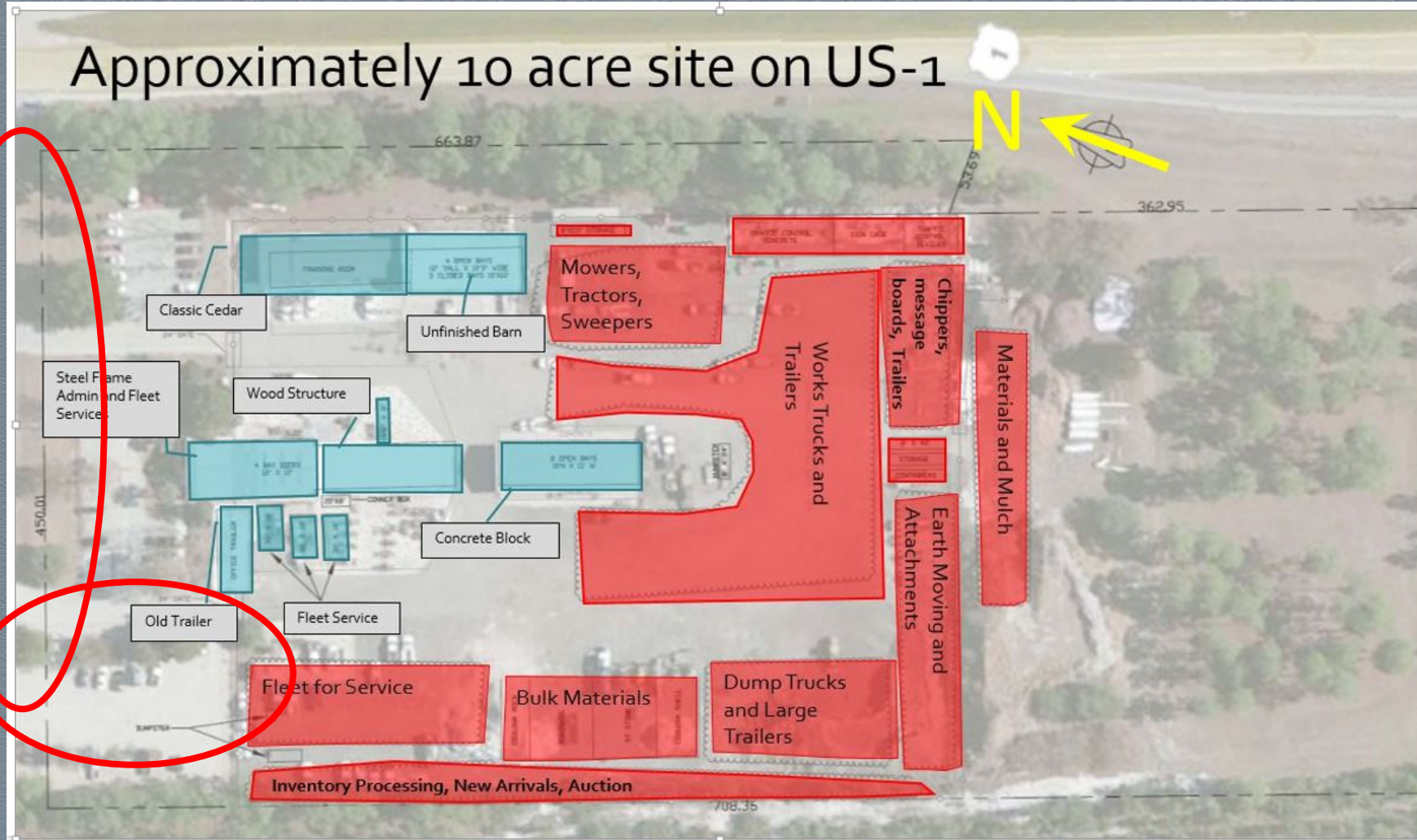
Approximately 10 acre site on US-1



DELIVERY RECEIVING AREA



EMPLOYEE PARKING



EMPLOYEE PARKING



FACILITY NEEDS

- ADDITIONAL FLEET WORK BAYS
- UPDATED OIL & CHEMICAL RECOVERY
- STOREROOM, RECEIVING & FABRICATION AREA
- RELIEVE WORKER & EQUIPMENT CONGESTION
- MULTIPURPOSE TRAINING & EMERGENCY SHELTER
- EMPLOYEE PARKING

MASTER PLAN STRATEGY

- IDENTIFY CURRENT AND FUTURE FACILITY NEEDS
- INTEGRATE ALL FACILITY FUNCTIONS

CITY'S SELECTION PROCESS

- FIVE MEMBER EMPLOYEE SELECTION TEAM
- TWO HIGHEST RATED FIRMS INVITED TO TOUR FACILITY AND BE INTERVIEWED BY TEAM
- TEAM SELECTED BERGMANN ASSOCIATES
- TEAM NEGOTIATED A FEE FOR SERVICES IN THE AMOUNT OF \$99,950

SCOPE OF SERVICES

- PROGRAMMING
- SITE MASTER PLANNING
- PRELIMINARY DESIGN
- BUILDING CONCEPTUAL DESIGN
- PROJECT BUDGET/SCHEDULE

DELIVERABLES

- SITE MASTER PLAN DRAWINGS
- CONCEPTUAL BUILDING PLANS
- CONCEPTUAL FLOOR PLANS FOR EACH BUILDING
- PROJECT BUDGET AND SCHEDULE

APPROACH

- MASTER PLAN INCLUDED IN FY17 BUDGET
- NOTICE TO PROCEED IN JANUARY
- COMPLETE MASTER PLAN AND INTEGRATE WITH CITY'S CAPITAL IMPROVEMENT PLAN
- PRESENTATION TO CITY COUNCIL IN MAY - JUNE

DISCUSSION