

# City of Palm Coast, Florida Agenda Item

**Agenda Date:** June 11, 2024

<b>Department</b>	CONSTRUCTION MANAGEMENT & ENGINEERING	<b>Amount</b>
<b>Division</b>	ENGINEERING	<b>Account #</b>
<b>Subject:</b> PRESENTATION - RESIDENTIAL SPEED STUDY		
<b>Presenter:</b> Carl Cote, Director of Stormwater & Engineering		
<b>Attachments:</b> 1. Presentation		
<b>Background:</b> <b>Council Priority:</b> <b>B. Safe and Reliable Services</b>  In January Council directive was to perform a speed limit posting study on the City's residential and Central Business Districts (CBD) roadways. Staff requested an assessment of the completed design for central diversion medians (traffic calming device) at two (2) locations on Florida Park Drive, an all-way stop sign warrant for two (2) intersections along Florida Park Drive, and an all-way stop sign warrant at two (2) intersections along Cimmaron Drive.  Staff will present speed limit posting study methodology, findings, and recommendations for Florida Park Drive. and Cimarron Drive.		
<b>Recommended Action:</b> <b>FOR PRESENTATION ONLY</b>		

City of Palm Coast  
**Residential Speed  
Limit Posting Study**

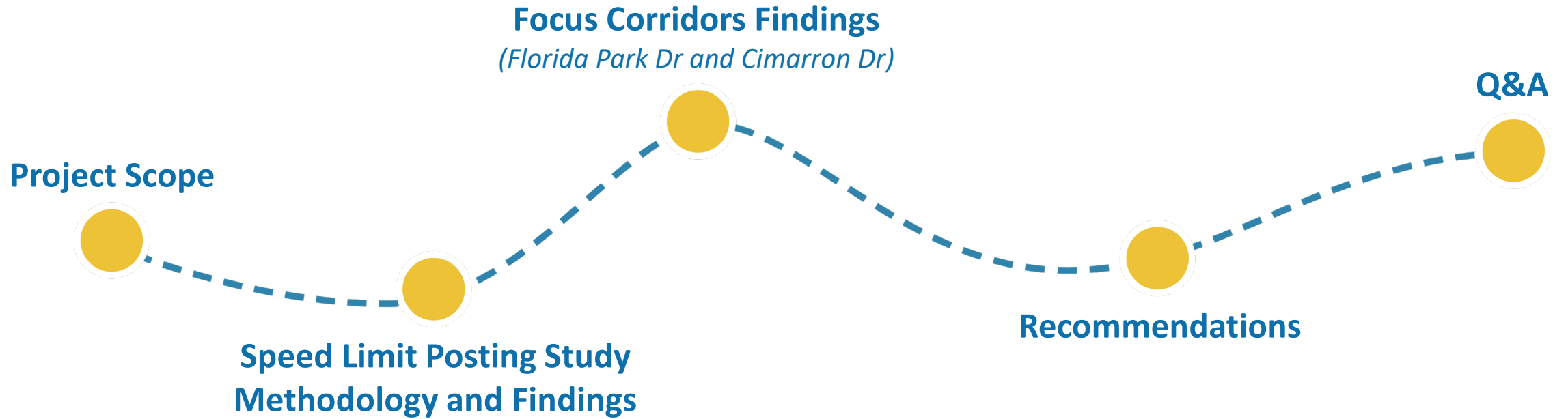
City Council Workshop  
June 11, 2024

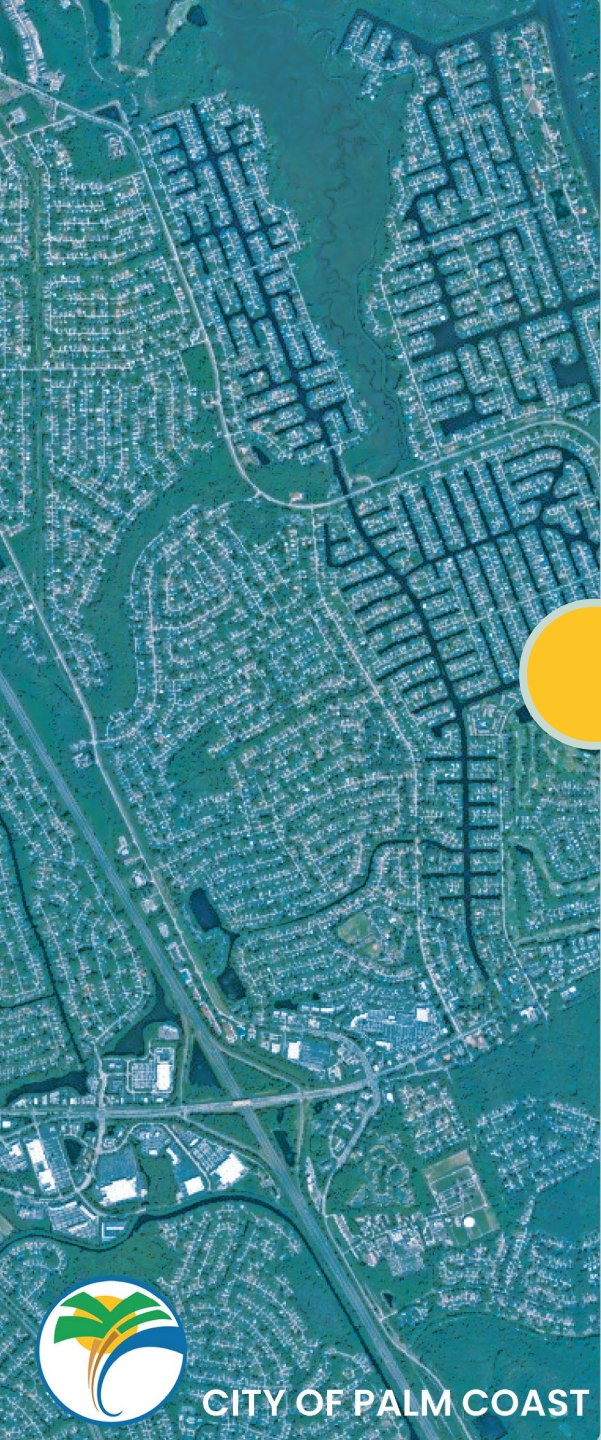






# Agenda





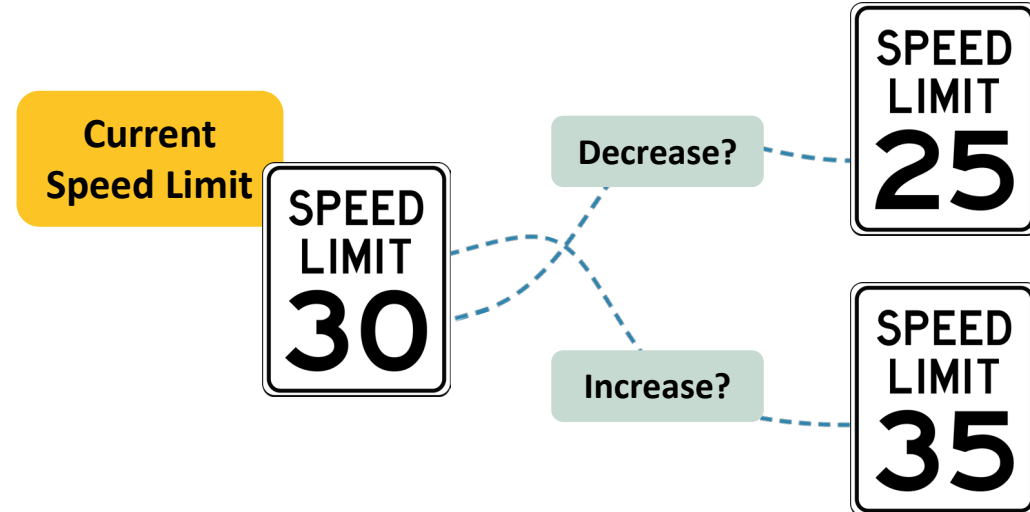
# Project Scope





# PROJECT SCOPE

- **Speed Limit Posting Study**
  - Residential Streets
  - Central Business District (CBD) Streets
- **Focus Corridors**
  - Florida Park Drive
  - Cimmaron Drive
- **Recommendations**



# GOVERNING STANDARD

Florida Statute §316.189

*“The maximum speed within any municipality is 30 miles per hour (statutory speed limit). With respect to residential districts, a **municipality may set a maximum speed limit of 20 or 25 miles per hour on local streets and highways after an investigation determines that such a limit is reasonable.**”*







# SPEED LIMIT STUDY

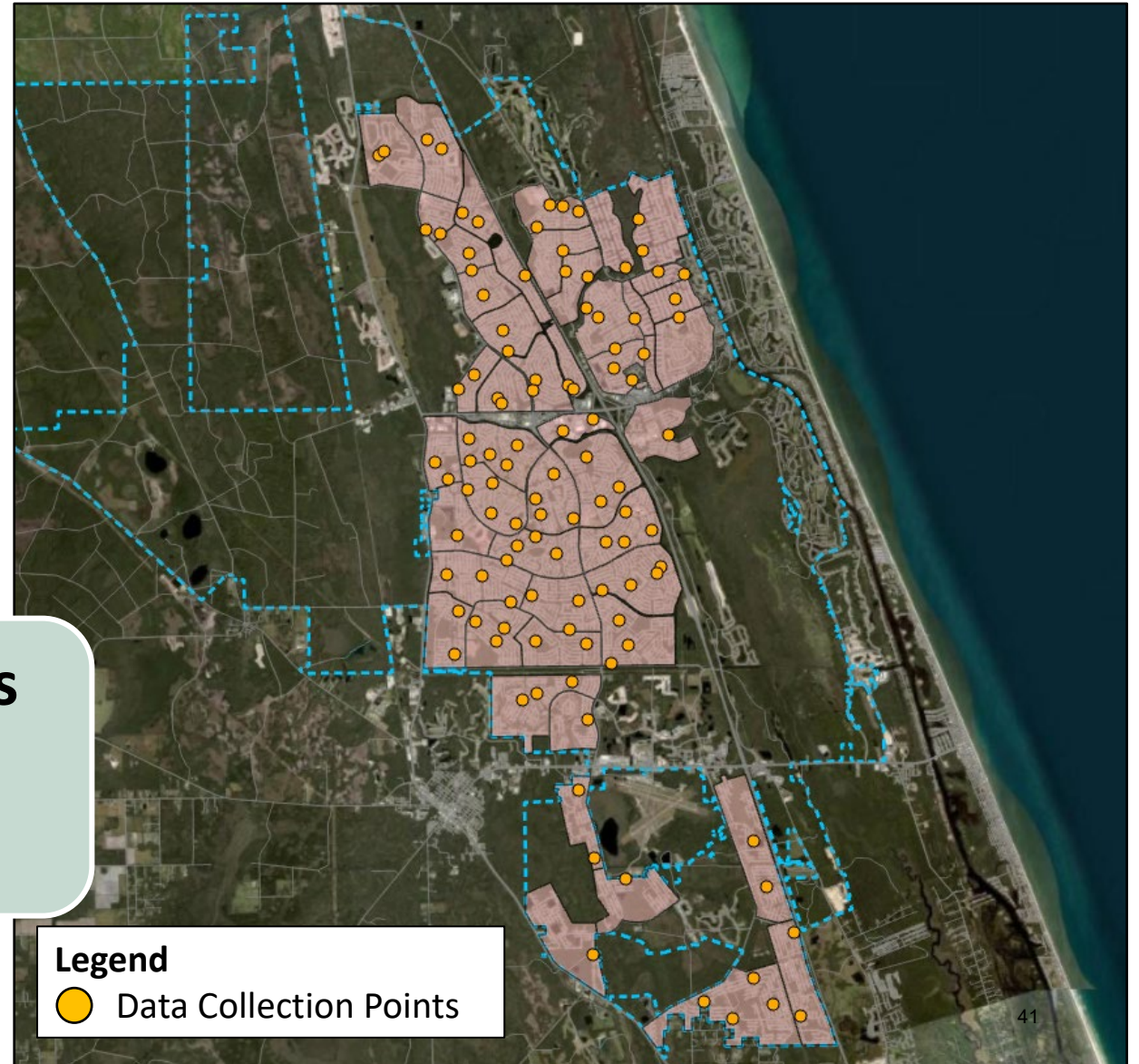
- FDOT Speed Zoning Manual
- Established speed zones
- Collected speed data at **109 locations**
- Established 48 speed zones



## Key Performance Indicators

85<sup>th</sup> percentile speed

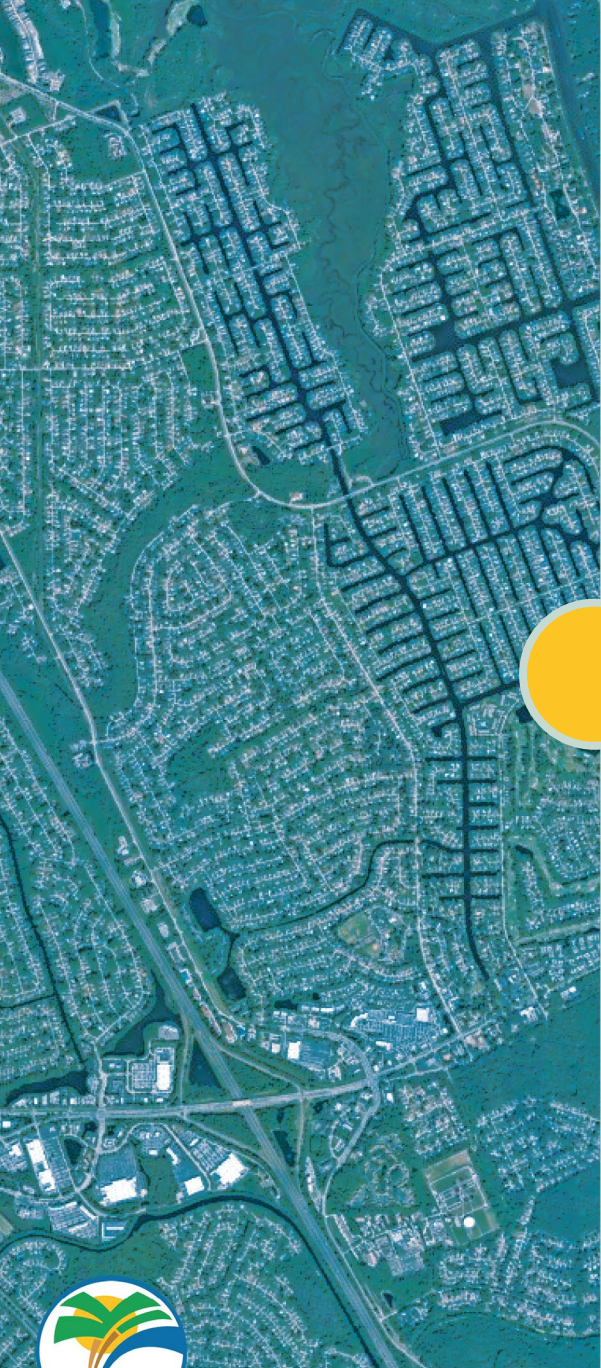
10 MPH pace



### Legend

● Data Collection Points





# Speed Limit Posting Study Findings





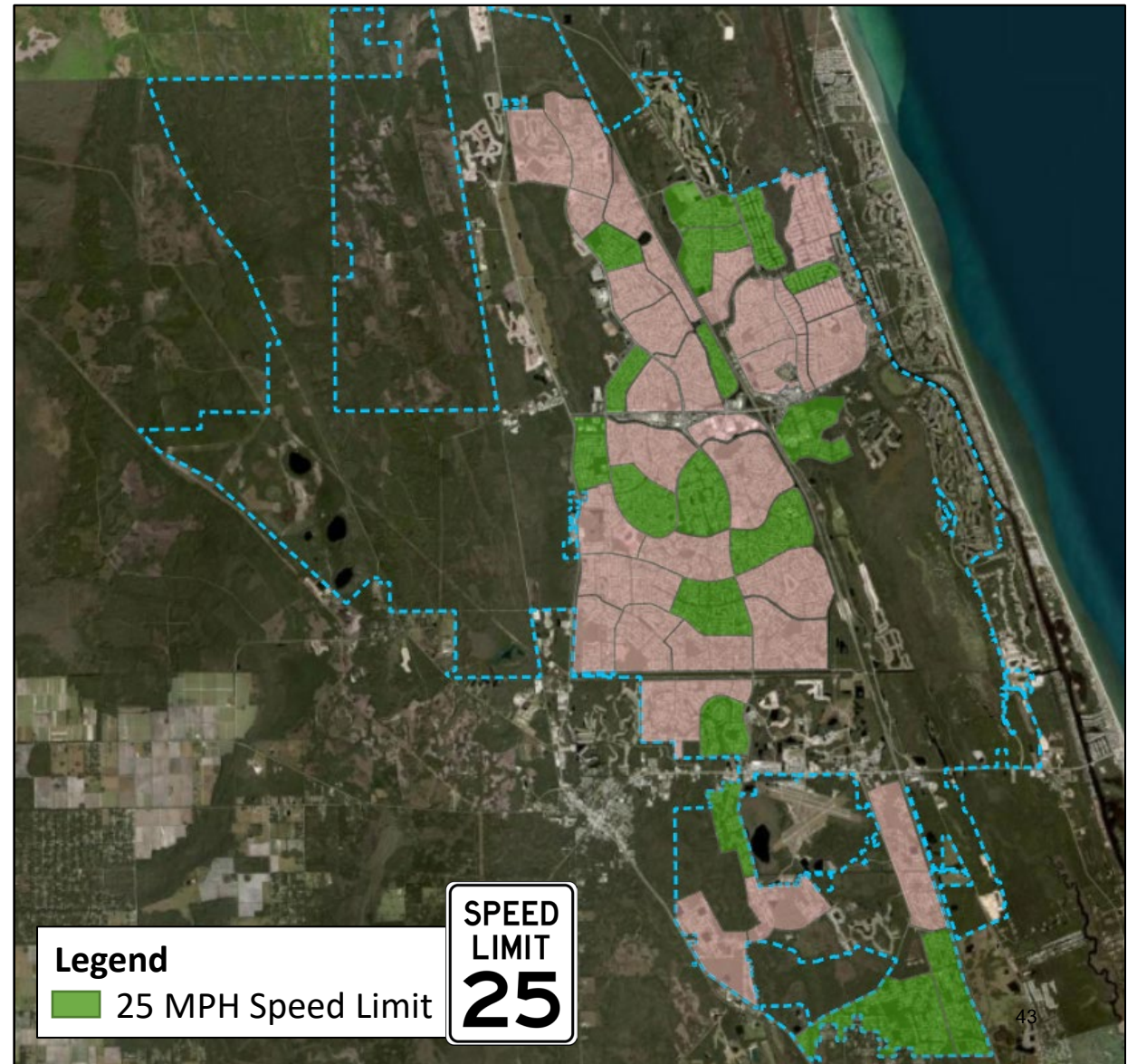


# SPEED LIMIT STUDY: FINDINGS

- 17 speed zones meet the condition for a posted speed limit of 25 MPH

Road Type	Meets 25 MPH
Residential Collector	8 out of 42
Residential Local	51 out of 67

**Residential Local Average Speed**  
30 MPH







# Findings on Focus Corridors





# Florida Park Drive



## Speeds

- Most people drive up to **37 MPH**



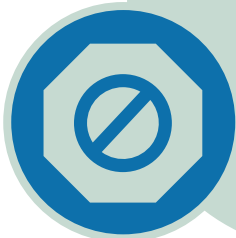
## Crashes

- 44 crashes (**9 crashes per year**)



## Traffic Calming

- Recommended (low impact on detours)



## All Way Stop Control (AWSC)

- Not warranted



# Florida Park Drive

- All-Way Stop Control (AWSC) Warrants
- (1) Fleetwood Drive and (2) Foresthill Drive
- Existing Scenario
  - Fleetwood Dr and Foresthill Dr – **LOS B**
- AWSC Condition
  - Fleetwood Dr and Foresthill Dr – **LOS B**

Warrants	Warranted? (Y/N)
A: Crash Experience	No
B: Sight Distance	No
C: Transition to Signal Control	No
D: 8-hour Volume	No
E: Other Considerations	No

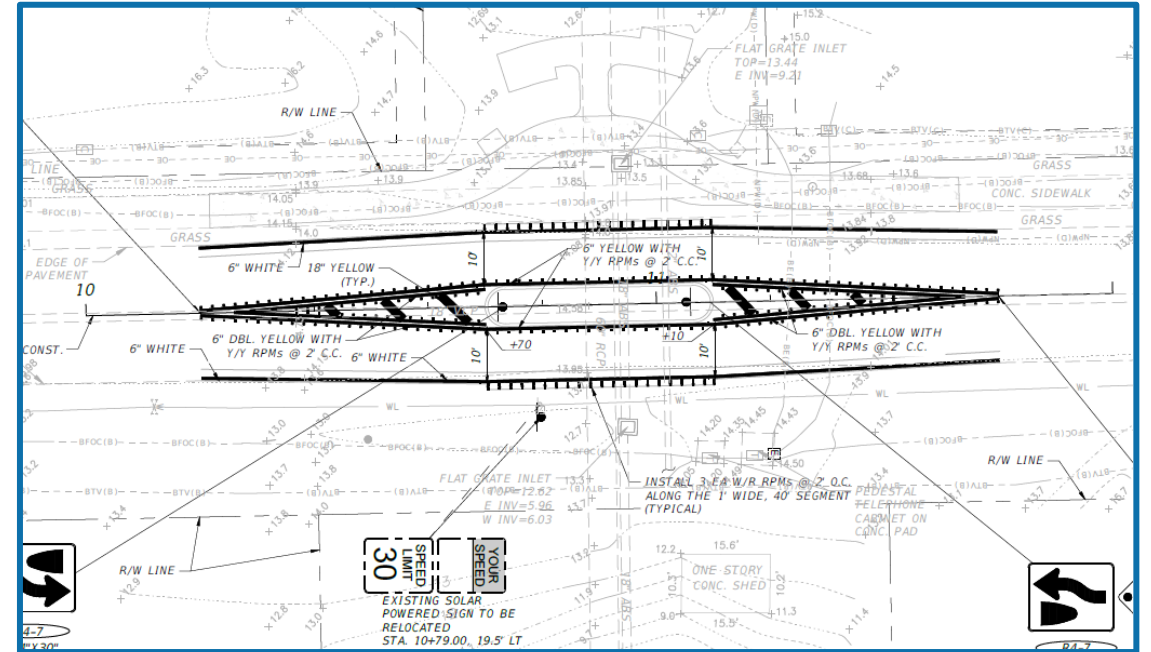
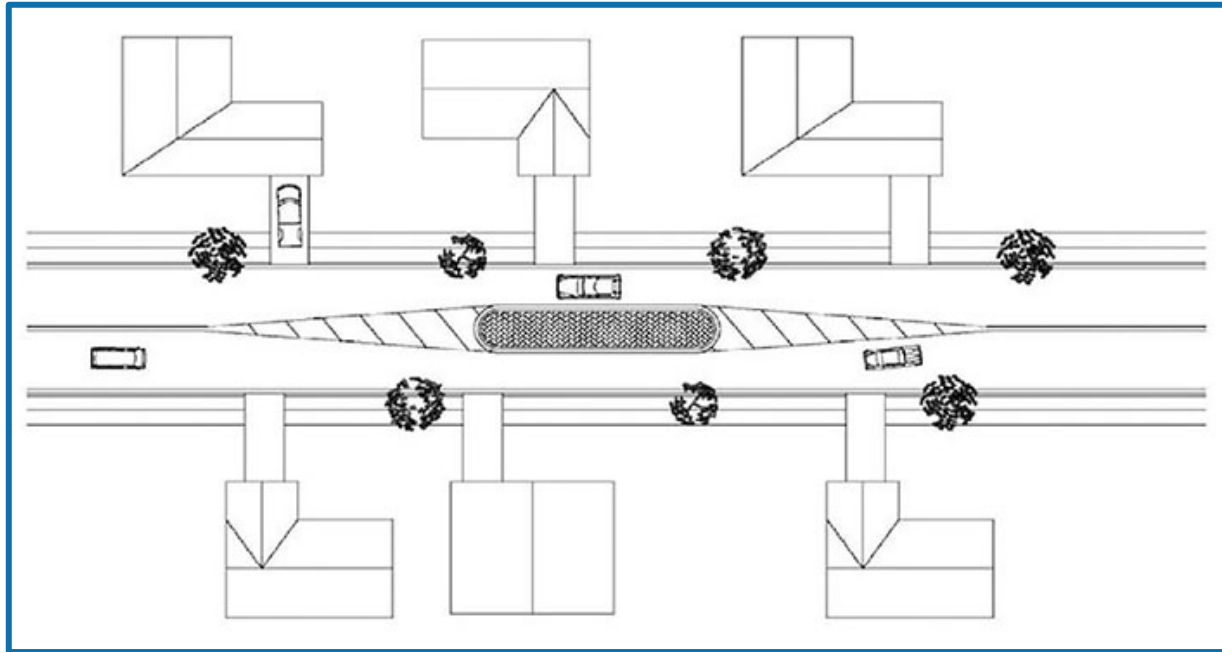


**More than 50 bicyclists  
and 10 pedestrians along  
Florida Park Drive**





# Florida Park Drive



- Traffic Calming Treatment (Median Island)
- Estimated Construction Cost: +/- \$500,000
- Anticipated Speed Reduction: 2-3 MPH



# Cimmaron Drive



## Speeds

- Most people drive up to **39 MPH**



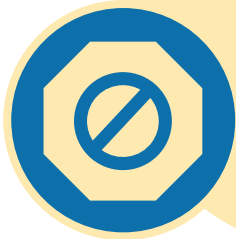
## Crashes

- 10 crashes (**2 crashes per year**)



## Traffic Calming

- Highly recommended



## All Way Stop Control (AWSC)

- Not warranted





# Cimmaron Drive

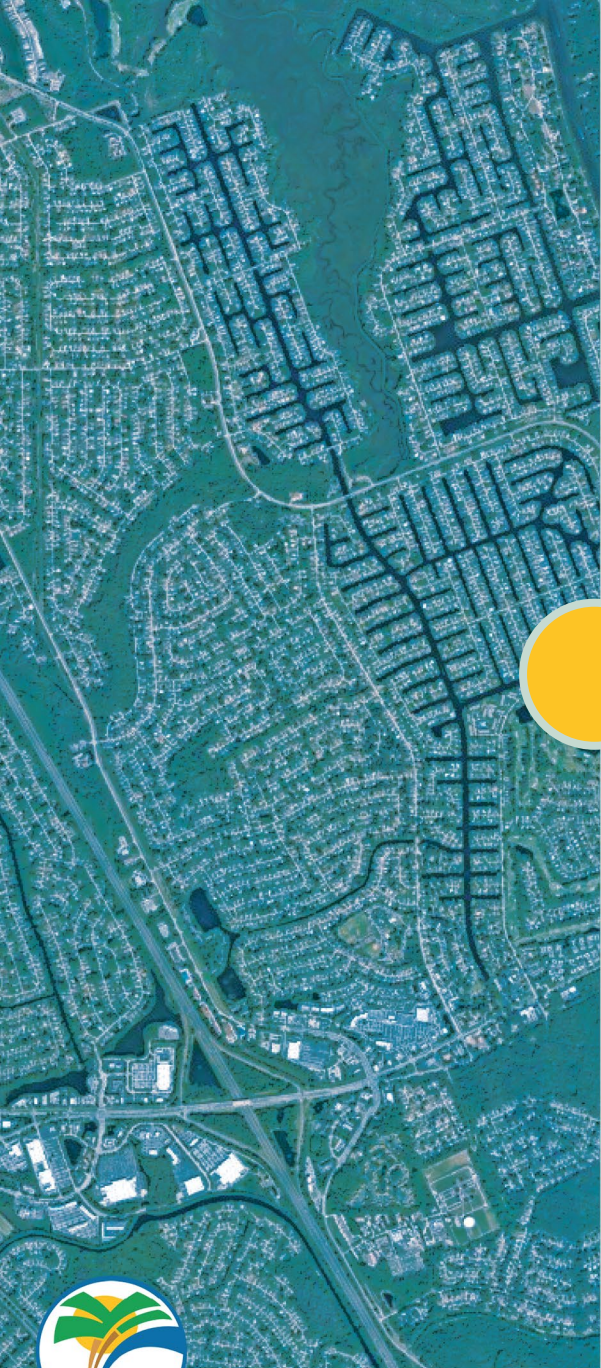
- All-Way Stop Control (AWSC) Warrants
- (1) Comanche Court and (2) Cochise Court
- Existing Conditions
  - Cochise Ct and Comanche Ct **LOS A**
- AWSC Condition
  - Cochise Ct and Comanche Ct **LOS A**



**More than 20 bicyclists  
and 50 pedestrians along  
Cimmaron Drive**

Warrants	Warranted? (Y/N)
A: Crash Experience	No
B: Sight Distance	No
C: Transition to Signal Control	No
D: 8-hour Volume	No
E: Other Considerations	No





# Recommendations





# RECOMMENDATIONS

## Residential Posted Speed Limit

### Option 1

Maintain 30 MPH on all roads and perform a Traffic Calming Plan

*Cost: \$30k - \$50k for Traffic Calming Plan*

### Option 2

Set Residential Local roads to 25 MPH and maintain Residential Collectors roads at 30 MPH

*Cost: \$1.6 million*

### Option 3

Option 2 plus install traffic calming treatment on Residential Collector roads

*Cost: \$1.6 million + traffic calming treatments*





# RECOMMENDATIONS

## Cimmaron Drive

- Traffic Calming Treatment  
*(lane width reduction, speed humps, or raised intersections)*
- Install speed reduction markings and *raised pavement markers* at curve *(Figure 1)*
- *Dynamic speed display signs* *(Figure 2)*



Figure 1

## Florida Park Drive

- Traffic Calming Treatment  
*(lane width reduction, speed humps, or raised intersections)* *(Figure 3)*



Figure 2

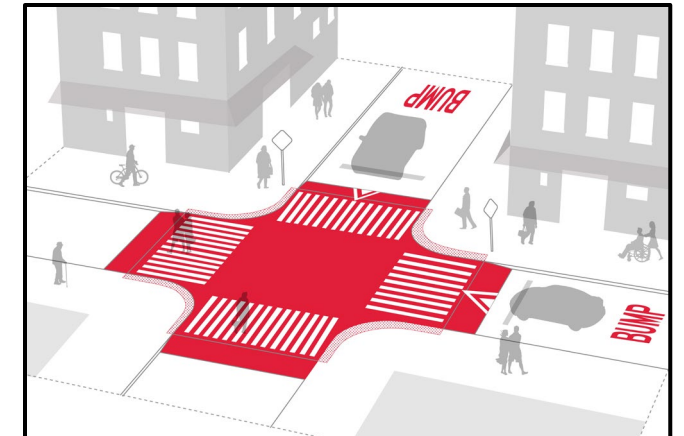


Figure 3