

Interlocal Agreement to Protect Old Brick Road

County Commission Workshop

April 20, 2026

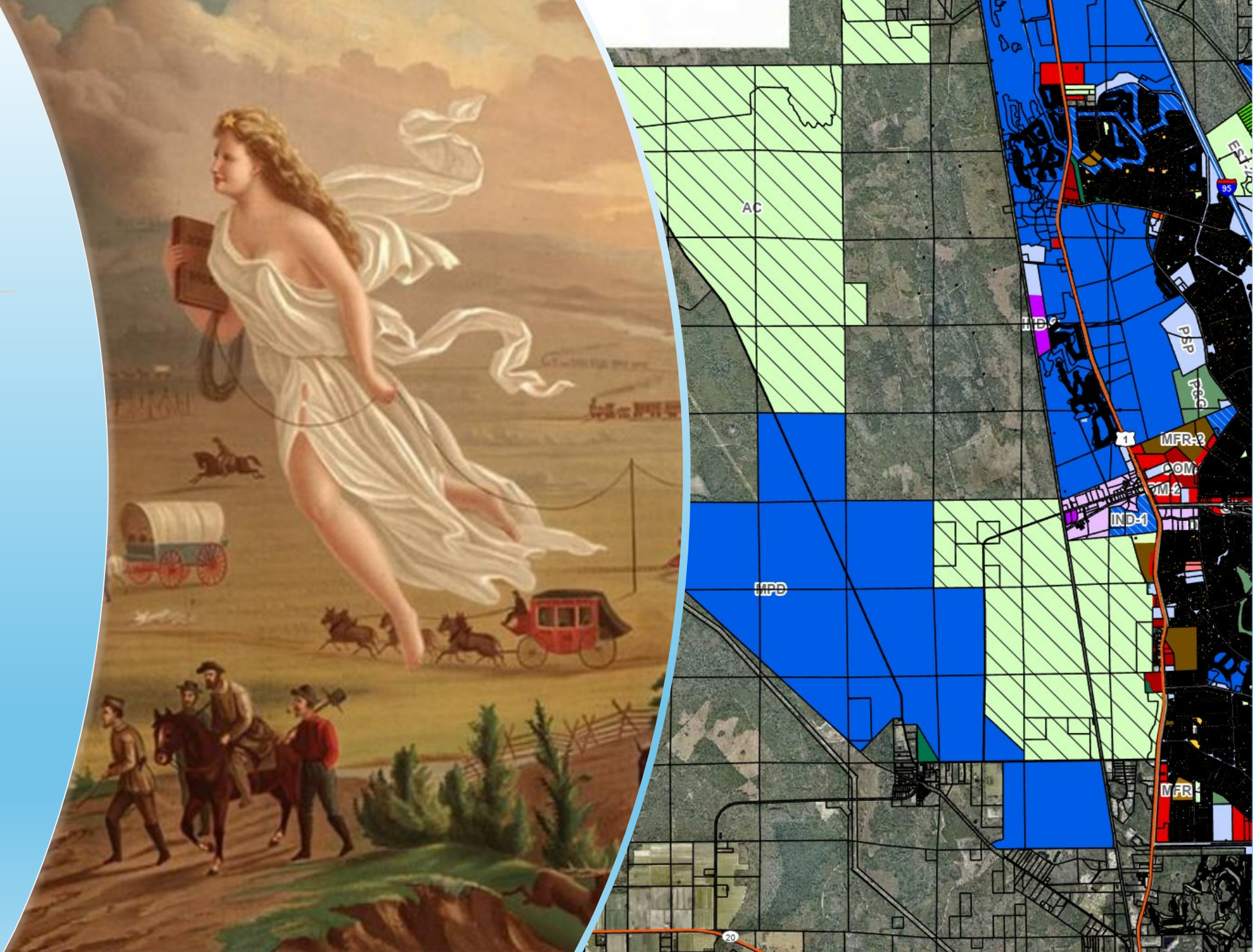
Management Plan

- 2004 Management Plan
- 2005 Listing in Nat'l Register of Historic Places; Heritage Crossroads
- Longest Stretch of Rural Brick Highway in the United States, 8 Miles in Flagler County
- Buried in Top Soil to Protect Bricks from Logging Trucks
- Problem with Theft and Dumping
- Vision of Amenity for Hiking and Biking with Kiosks

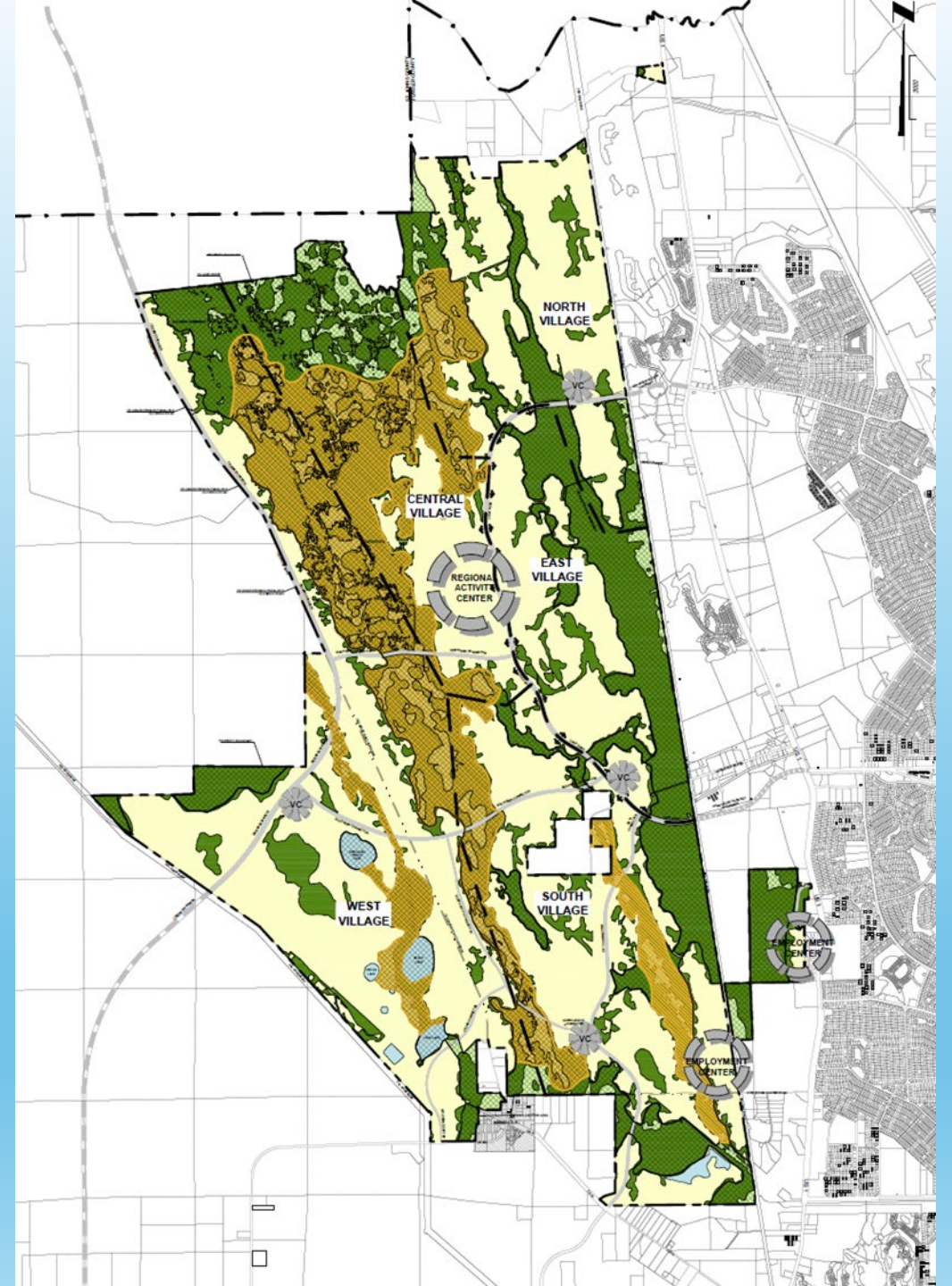


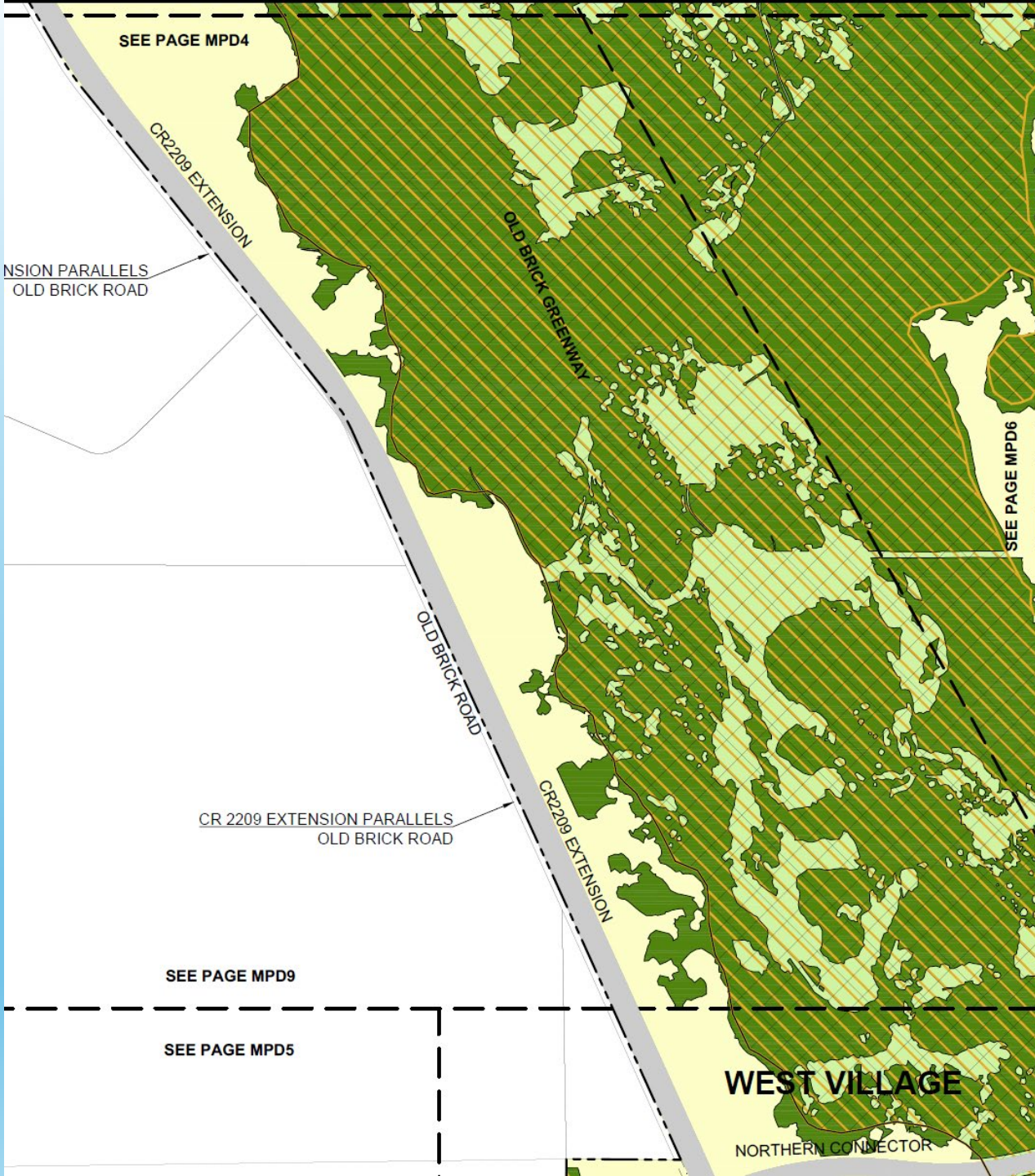
Development Pressure

- “Westward Expansion”
- Palm Coast Has Annexed Lands Extending Westward of U.S. 1, Up To and Past the Old Brick Road



Conceptual Plan of Raydient





SEE PAGE MPD4

CR2209 EXTENSION

NSION PARALLELS
OLD BRICK ROAD

OLD BRICK GREENWAY

SEE PAGE MPD6

OLD BRICK ROAD

CR 2209 EXTENSION PARALLELS
OLD BRICK ROAD

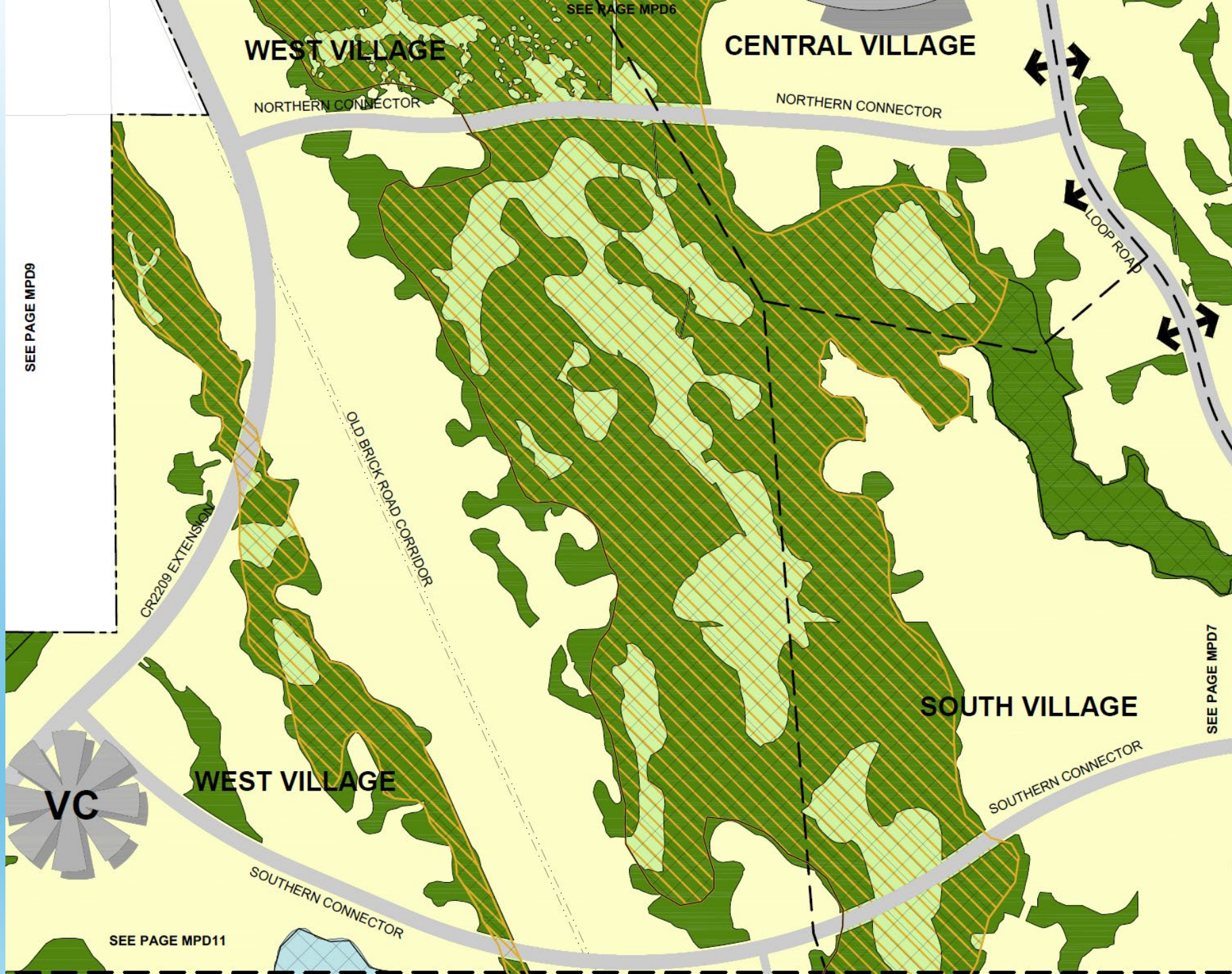
CR2209 EXTENSION

SEE PAGE MPD9

SEE PAGE MPD5

WEST VILLAGE

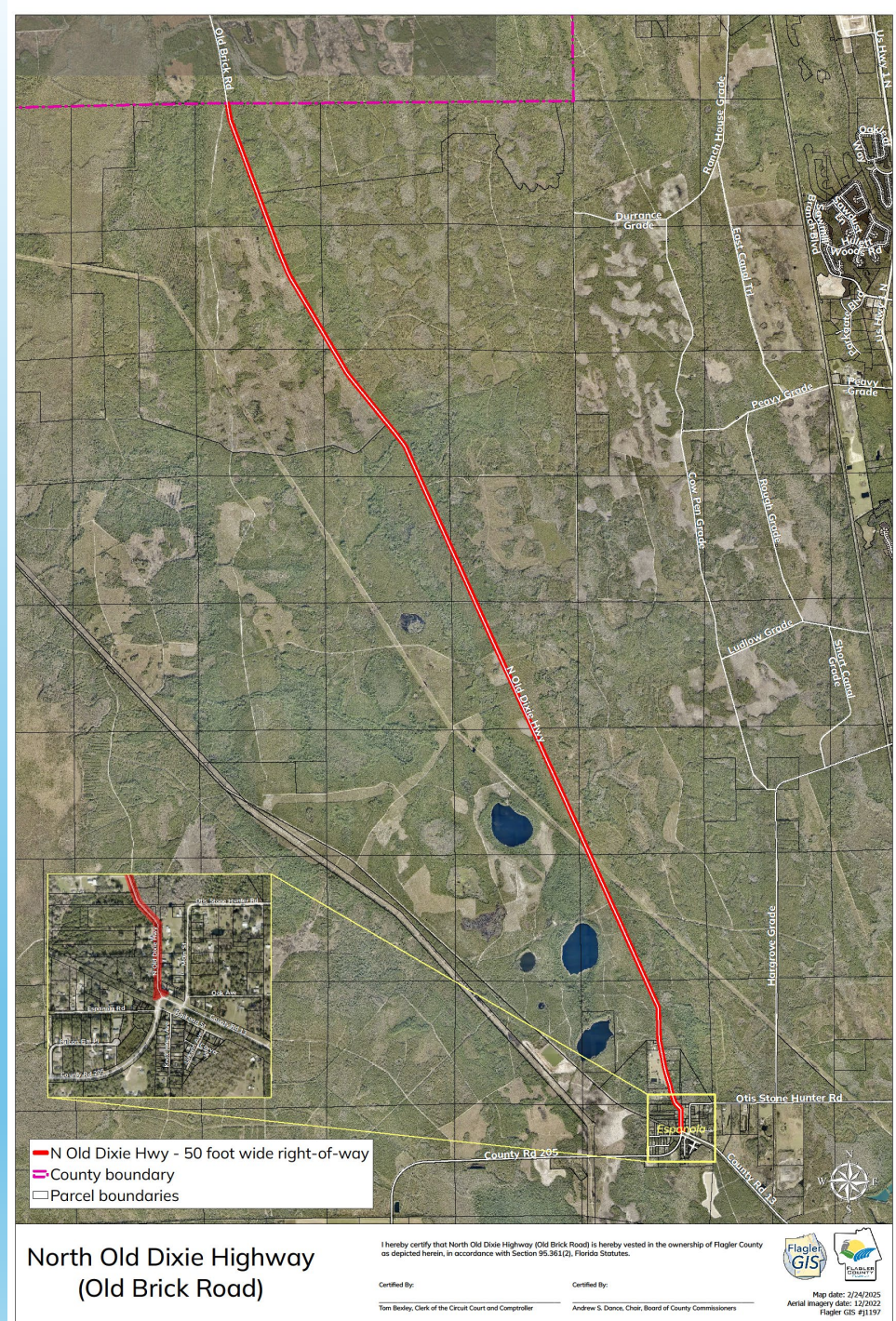
NORTHERN CONNECTOR



Filing of Map

In October 2025, BCC Adopted Resolution 2025-85 Vesting All Rights In the Road to Flagler County, pursuant to §95.361(2), Fla. Stat.

Recorded at OR Book 3004, Page 1560.



North Old Dixie Highway (Old Brick Road)

I hereby certify that North Old Dixie Highway (Old Brick Road) is hereby vested in the ownership of Flagler County as depicted herein, in accordance with Section 95.361(2), Florida Statutes.

Certified By:

Tom Beckley, Clerk of the Circuit Court and Comptroller

Certified By:

Andrew S. Donno, Chair, Board of County Commissioners



ILA with Palm Coast

- Longterm Vision is that OBR be Amenity for Nearby Development and Culture Resource for Residents and Visitors
- Twenty-one Existing Logging Road Connections to Remain Until Viable Alternative Routes Come Online
- No More than Four At-Grade Crossings, At Least One Mile Apart Without Approval of BCC; No Limit on Above Grade Crossings
- Future Connections Shall be Subject to County's Right-of-Way Utilization Ordinance
- Utilities May Bore Under OBR
- City Shall Require Parallel Facilities for Vehicles When Reviewing Development of Nearby Lands
- City Shall Give County Notice and Opportunity to Comment on Development Applications
- City Shall Consider Enhanced Buffers When Reviewing Development Applications



Roadmap of Protection

