

Tropical Depression #2

Weather Briefing

Saturday, May 28th, 2016
5 am EDT



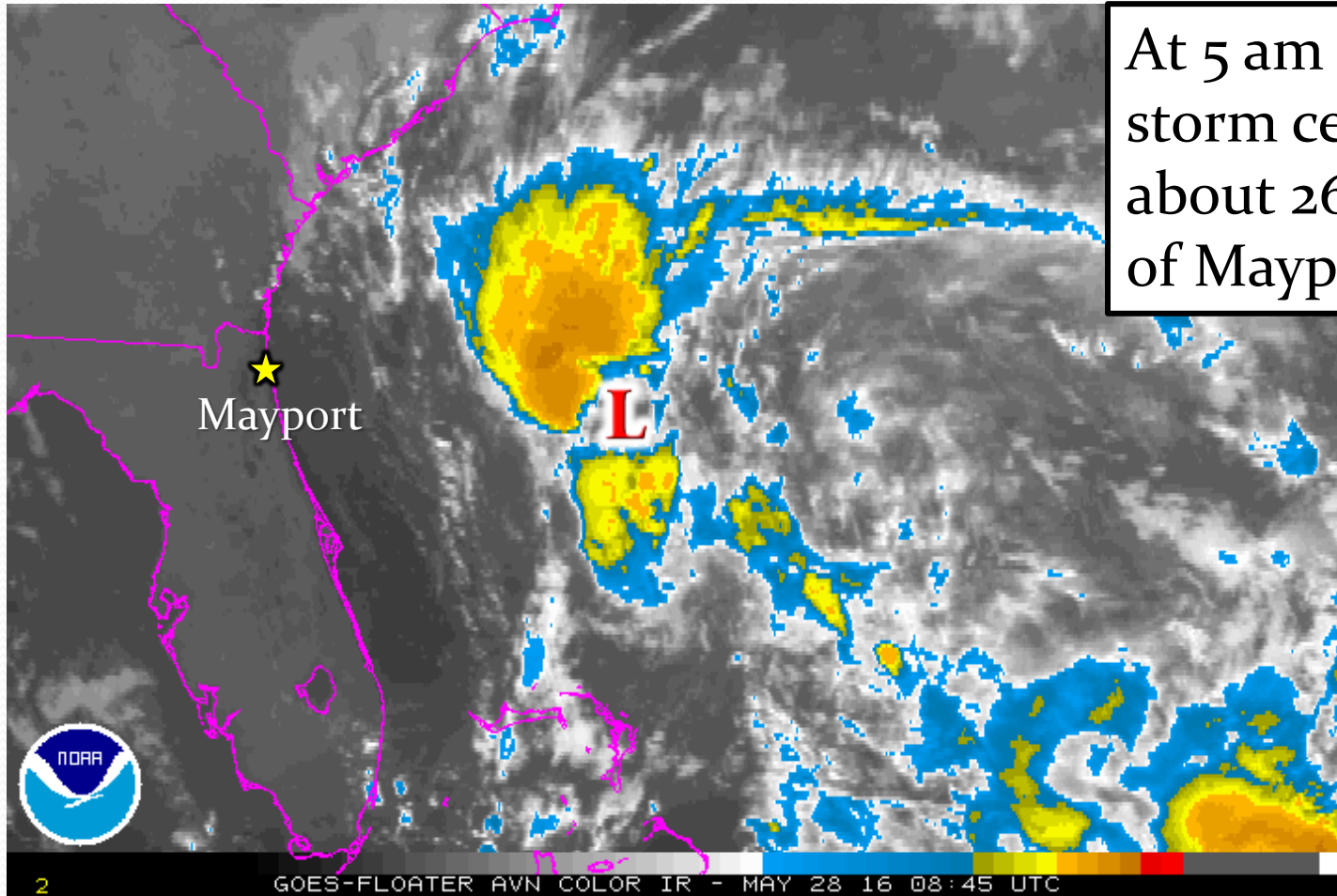
National Weather Service
Jacksonville, Florida

Angie Enyedi
Meteorologist, NWS Jacksonville





Tropical Depression #2



At 5 am Saturday, the storm center was about 266 miles east of Mayport, Florida.



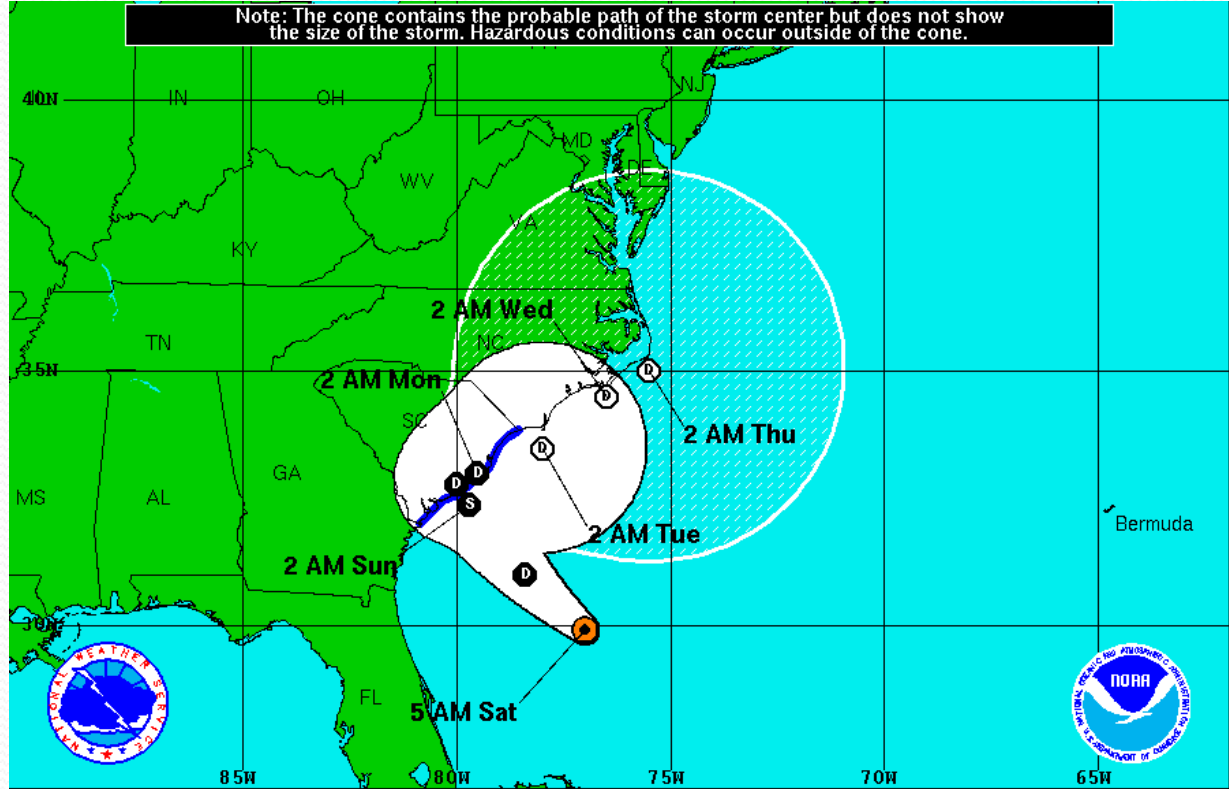
Situation Overview

- Tropical Depression #2 will track northwest today and tonight toward the South Carolina coast, remaining offshore of the Florida and Georgia Atlantic coasts.
- The storm is expected to strengthen to a tropical storm later today or tonight.
- Greatest local impact will be dangerous and frequent rip currents today through Monday.
- Low chance (2 in 10 chance) of brief period of sustained tropical storm force winds over marine waters beyond 20 NM offshore of Brunswick Ga tonight.



Latest Forecast Track

Note: The cone contains the probable path of the storm center but does not show the size of the storm. Hazardous conditions can occur outside of the cone.



- Tropical Storm Warning remains in effect from Savannah River to Little Inland South Carolina.
- No current tropical watches or warnings for the local area.
- No significant changes since last advisory.
- Some strengthening is possible as the storm approaches the South Carolina coast through tonight.

Tropical Depression Two Saturday May 28, 2016 5 AM EDT Advisory 3 NWS National Hurricane Center	Current Information: ● Center Location 29.9 N 77.0 W Max Sustained Wind 35 mph Movement NW at 14 mph	Forecast Positions: ● Tropical Cyclone ○ Post-Tropical Sustained Winds: D < 39 mph S 39-73 mph H 74-110 mph M > 110mph
Potential Track Area: Day 1-3 Day 4-5	Watches: Hurricane Trop.Storm	Warnings: Hurricane Trop.Storm

Tropical Depression #2

5 am Advisory, 5/28/2016

National Weather Service
Jacksonville Florida



Timing

TD #2 will continue to track northwest today and Sunday toward the Carolinas.

Potential Local Impacts, Sat-Mon

- Dangerous Rip Currents
- Building, Rough Surf
- Passing showers & isolated t'storms
- A 2 in 10 chance of sustained tropical storm force winds impacting the coastal waters 20-60 NM east of Brunswick, Ga.

Recommended Actions

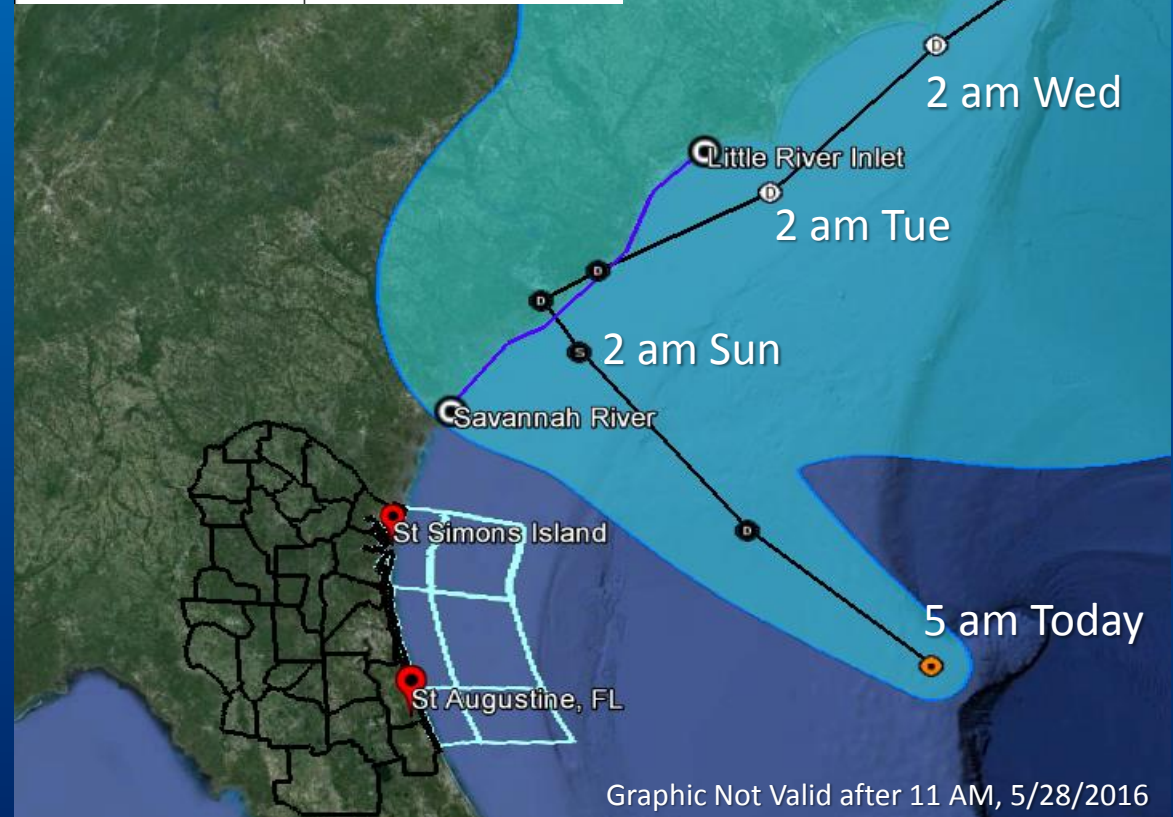
- Although TD #2 is expected to remain north of the local area, now is a good time to:
- Check Supply Kits are stocked.
 - Review your Family Safety Plans.
 - Monitor latest forecast information.

Resources

- National Hurricane Center: nhc.noaa.gov
- Disaster Supply Kit: www.ready.gov/kit

Legend	
Current Center Location	
Forecast Center Locations:	
Tropical Cyclone	
M Sustained wind > 110 mph	
H Sustained wind > 73 mph	
S Sustained wind 39 - 73 mph	
D Sustained wind < 39 mph	
Post-Tropical Cyclone	
H Sustained wind > 73 mph	
S Sustained wind 39 - 73 mph	
D Sustained wind < 39 mph	
Watches / Warnings:	
Hurricane Warning	
Hurricane Watch	
Tropical Storm Warning	
Tropical Storm Watch	
Cone of Uncertainty:	
Potential Day 1-3 Track Area	
Potential Day 4-5 Track Area	

NOTE: Forecast cone is for the center of the storm. The center is expected to remain within the cone 67% of the time.



Graphic Not Valid after 11 AM, 5/28/2016



@NWSJacksonville

Weather.gov/jax



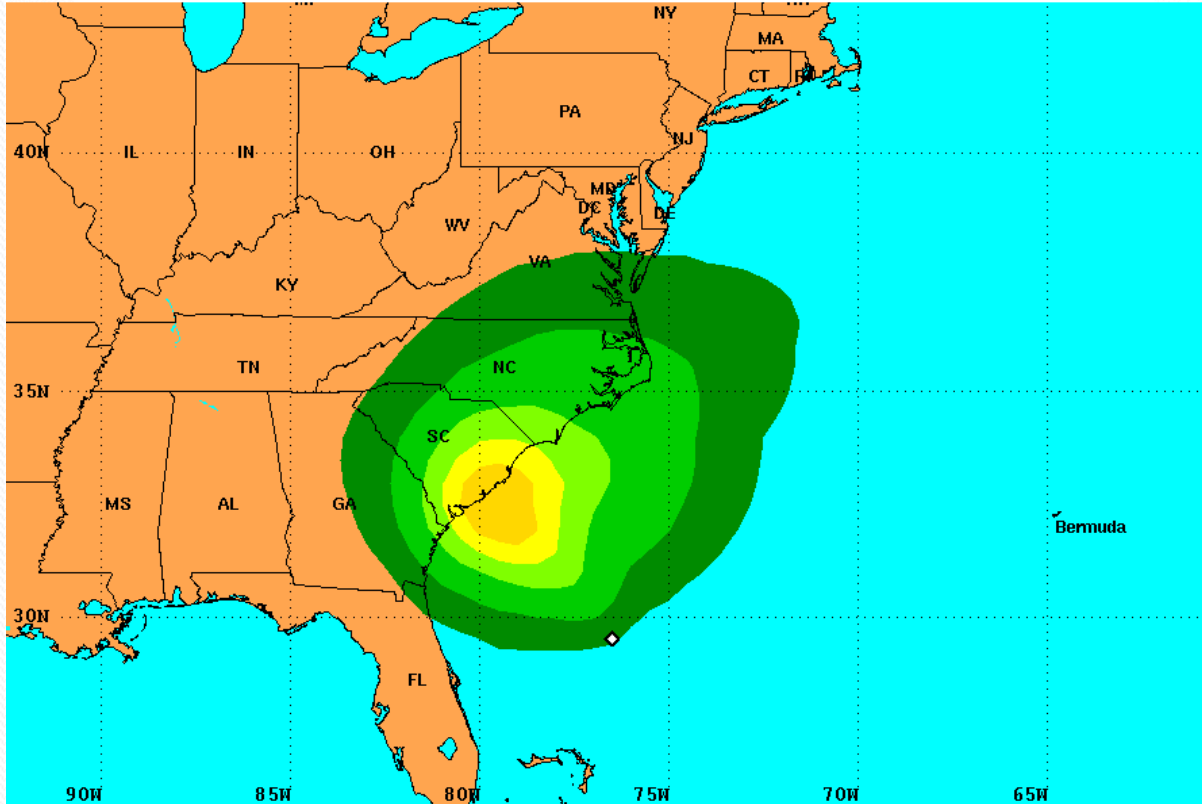
US National Weather Service Jacksonville



Tropical Storm Wind Potential

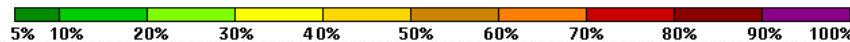


PRELIMINARY (SINGLE STORM) Tropical Storm Force Wind Speed Probabilities
For the 120 hours (5 days) from 2 AM EDT Sat May 28 to 2 AM EDT Thu Jun 2



Probability of sustained tropical storm force surface winds (1-minute average of 39 mph or greater)

◇ indicates TROPICAL DEPRESSION TWO center location at 2 AM EDT Sat May 28 2016 (Forecast/Advisory #3)

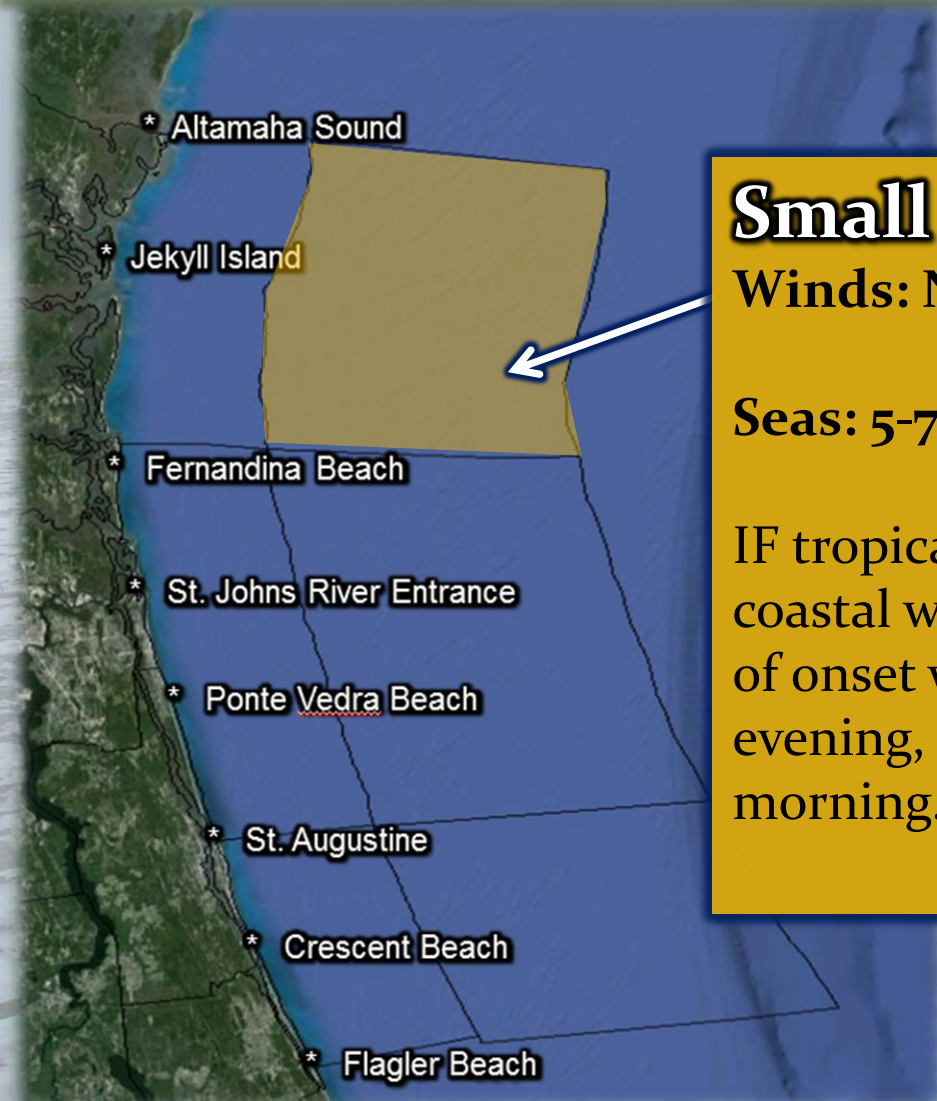


- Decreasing probabilities of sustained tropical storm force winds across Southeast Georgia and the adjacent coastal waters.
- There is a 2 in 10 chance of tropical force winds impacting the coastal waters east of Brunswick Ga beyond 20 NM.



Small Craft Advisory

4 pm today through 5 am Sunday



Small Craft Advisory

Winds: North to northwest 15-20 knots

Seas: 5-7 feet with occasional seas to 9 feet.

IF tropical storm conditions affect the adjacent coastal waters of SE Ga, the most likely period of onset would be later this afternoon or this evening, then chances decrease Sunday morning.



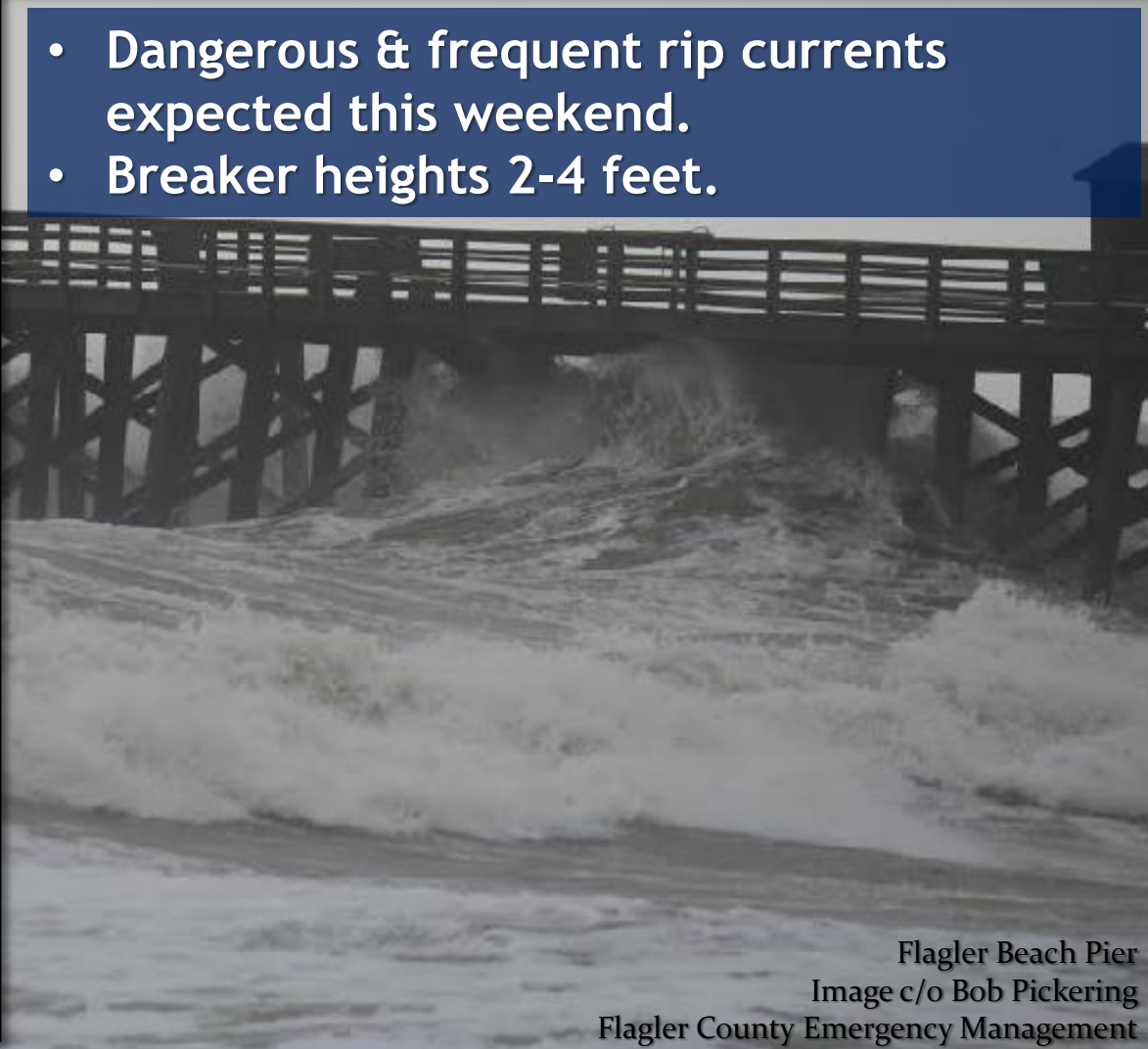
High Rip Current Risk

If in Doubt, Don't Go Out!

RIP CURRENTS

Break the Grip of the Rip!

Rip currents are powerful currents of water moving away from shore. They can sweep even the strongest swimmer out to sea.



- Dangerous & frequent rip currents expected this weekend.
- Breaker heights 2-4 feet.

IF CAUGHT IN A RIP CURRENT

- ◆ Don't fight the current
- ◆ Swim out of the current, then to shore
- ◆ If you can't escape, float or tread water
- ◆ If you need help, call or wave for assistance

SAFETY

- ◆ Know how to swim
- ◆ Never swim alone
- ◆ If in doubt, don't go out

More information about rip currents can be found at the following web sites:
www.ripcurrents.noaa.gov
www.usia.org



Potential Impacts Summary

Hazards	Potential Impacts	Timing	Location(s)
Wind	No impacts expected.		
Storm Surge (Inundation)	No impacts expected.		
Rainfall Flooding	No impacts expected.		
Tornado	No impacts expected.		
Marine	Small craft advisory conditions. Seas up to 7-9 ft possible.	This afternoon through tonight.	Ga Atlantic waters 20-60 NM offshore.
Beach/Surf	Frequent Rip Currents & Rough Surf	Today through Monday.	SE Georgia & NE Florida coast



Situation Overview

- Tropical Depression #2 will track northwest today and tonight toward the South Carolina coast, remaining offshore of the Florida and Georgia Atlantic coasts.
- The storm is expected to strengthen to a tropical storm later today or tonight.
- Greatest local impact will be dangerous and frequent rip currents today through Monday.
- Low chance (2 in 10 chance) of brief period of sustained tropical storm force winds over marine waters beyond 20 NM offshore of Brunswick Ga beginning late this afternoon or tonight.
- Next briefing, if needed, will be available later this afternoon.