



Major Hurricane Matthew Briefing

Situation Overview



- At 5 p.m. Tuesday, Category 4 Hurricane Matthew was about 860 miles South-Southeast of Mayport, Florida, moving north around 10 mph. Maximum sustained winds remain near 145 mph.
- Changes since last advisory: Increasing chances of tropical storm force winds over southeast Georgia & northeast Florida, and a slightly increasing chances of hurricane force winds over the coastal locations and adjacent coastal waters.
- As the hurricane turns northwestward through the Bahamas on Wednesday, increasing northeast winds are expected over Southeast Georgia and Northeast Florida, well removed from the hurricane's circulation. Local coastal impacts including strong winds, high surf, beach erosion and waves of heavy rainfall are possible Wednesday & Thursday.
- Based on the latest forecast, tropical storm conditions could impact the adjacent Atlantic waters Thursday night, and then NE Florida and SE Georgia late Thursday night through early Saturday. Hurricane conditions are possible over the adjacent Atlantic coastal waters Friday.
- Matthew's future forecasts should continue to be closely monitored, **as a westward track shift will increase local impacts.**

Residents and interests in north Florida and southeast Georgia should closely monitor the future progress of the storm. Be careful about rumors and social media posts. The storm could pose a threat to the region within 72 hours.

1



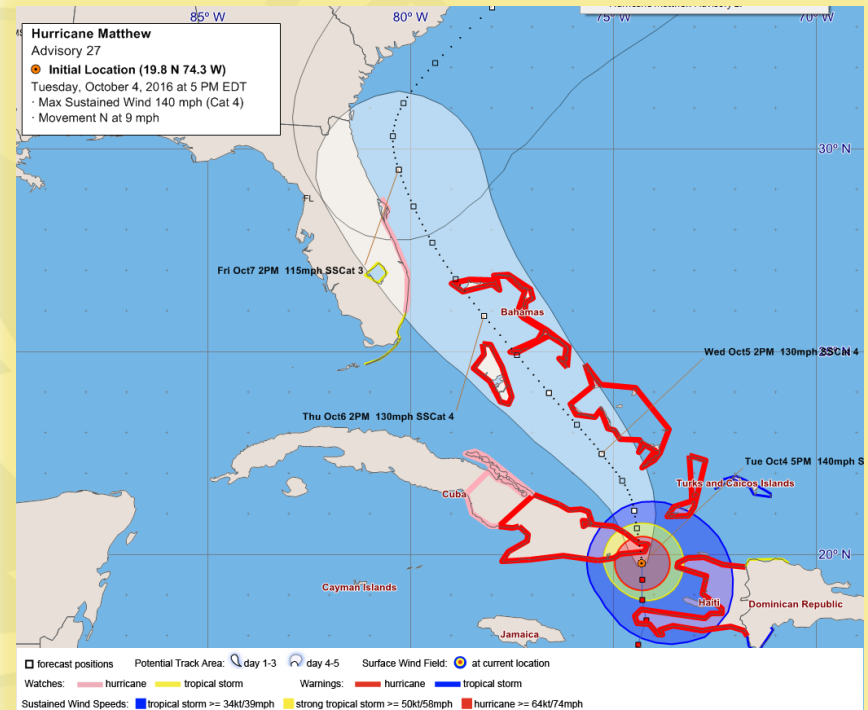
Five Day Cone of Uncertainty



Based on the latest NHC forecast:

- **Matthew's closest approach to northeast Florida and southeast Georgia will likely be Friday and Friday night.**
- **Matthew will bring significant marine and coastal concerns to Northeast Florida and Southeast Georgia.**
- ***Based on our normal track error the storm could track onshore PLEASE HEED the advice of Emergency Officials***

NOTE: The forecast cone (shaded white area and hatched area in the graphic) is where the center of the storm is expected to track 2/3 of the time.

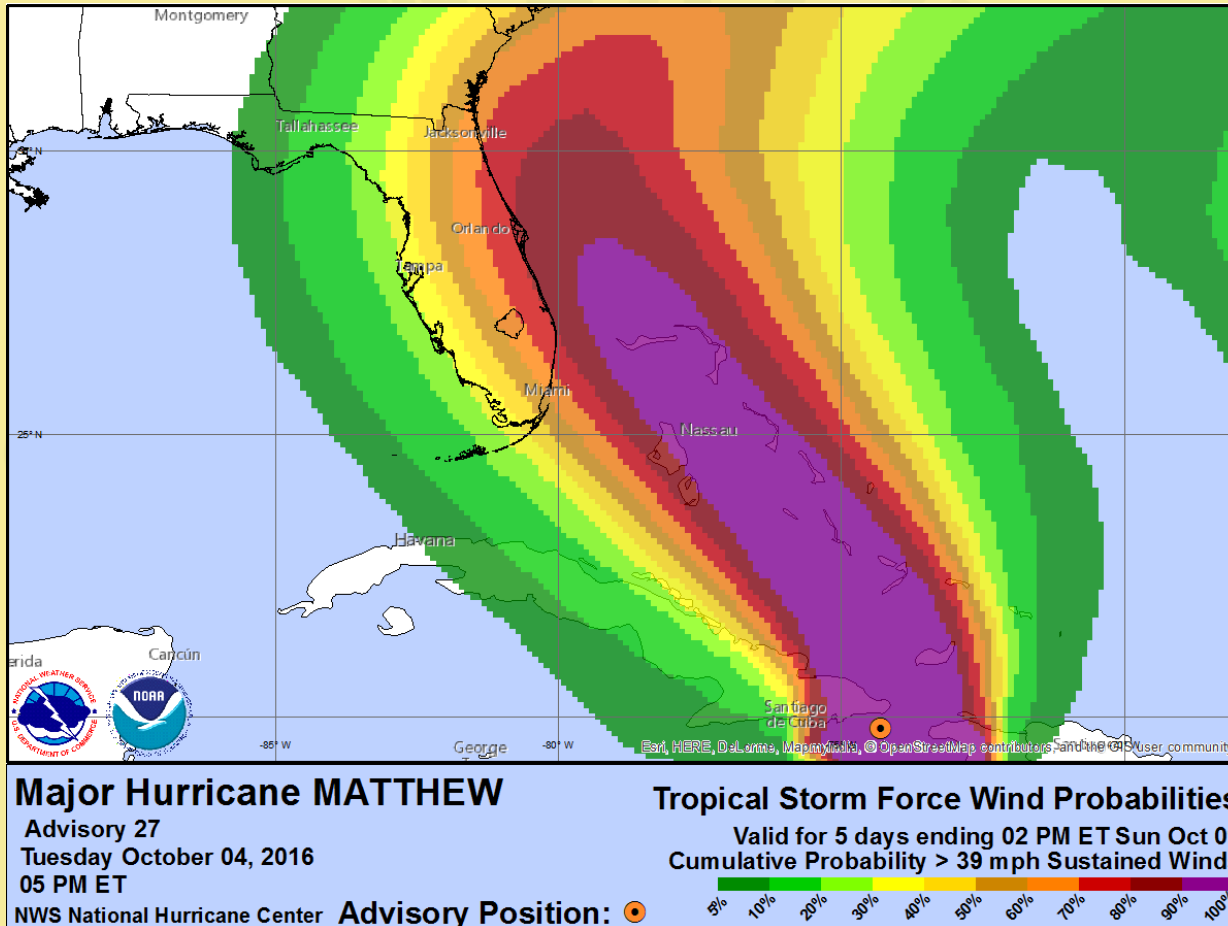


Residents and interests in north Florida and southeast Georgia should closely monitor the future progress of the storm. Be careful about rumors and social media posts. The storm **could** pose a threat to the region within 72 hours.

2



Tropical Storm Force Wind Speed Probabilities

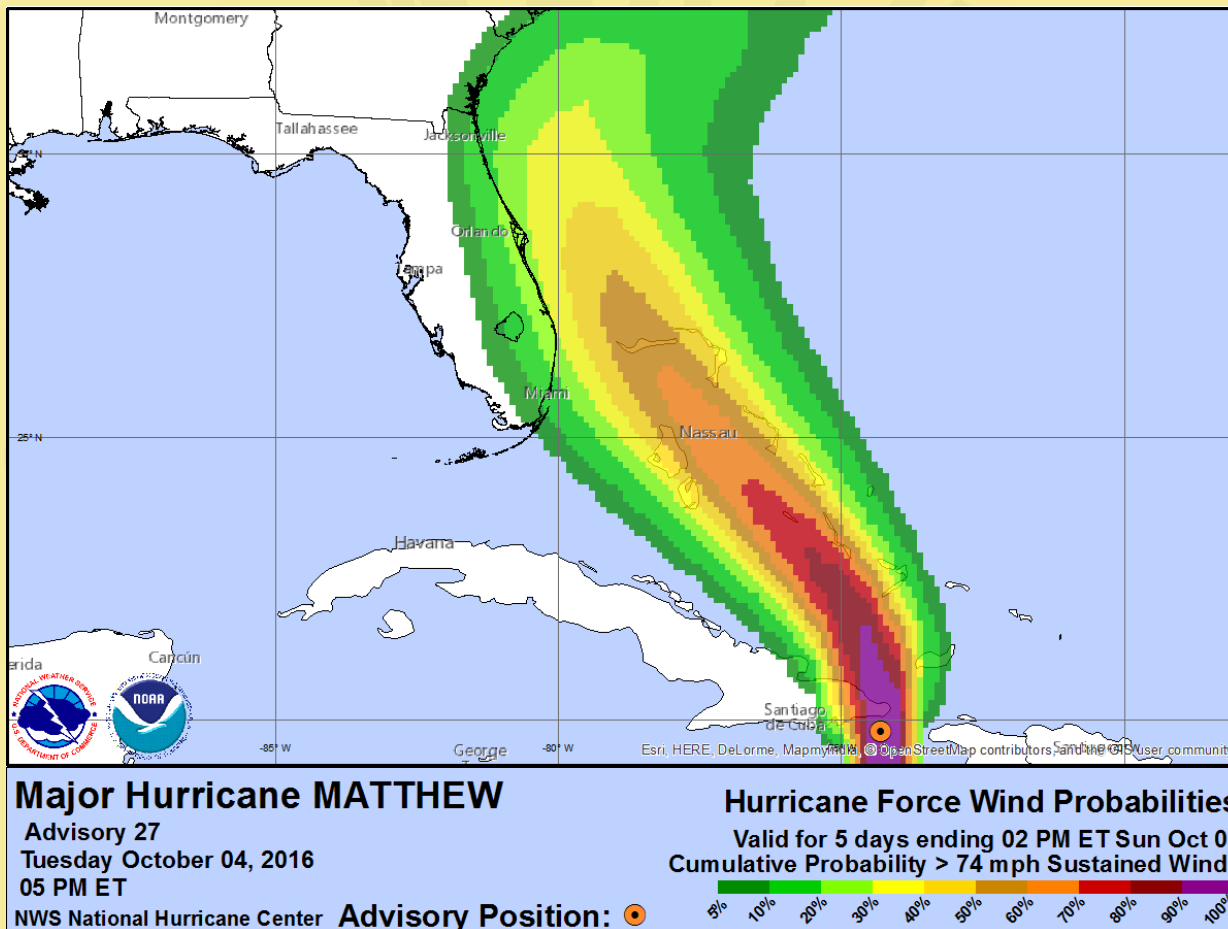


Residents and interests in north Florida and southeast Georgia should closely monitor the future progress of the storm. Be careful about rumors and social media posts. The storm *could* pose a threat to the region within 72 hours.



Hurricane Force Wind Probabilities

Although these are low, they are indicating a chance of a high impact event.



Residents and interests in north Florida and southeast Georgia should closely monitor the future progress of the storm. Be careful about rumors and social media posts. The storm could pose a threat to the region within 72 hours.



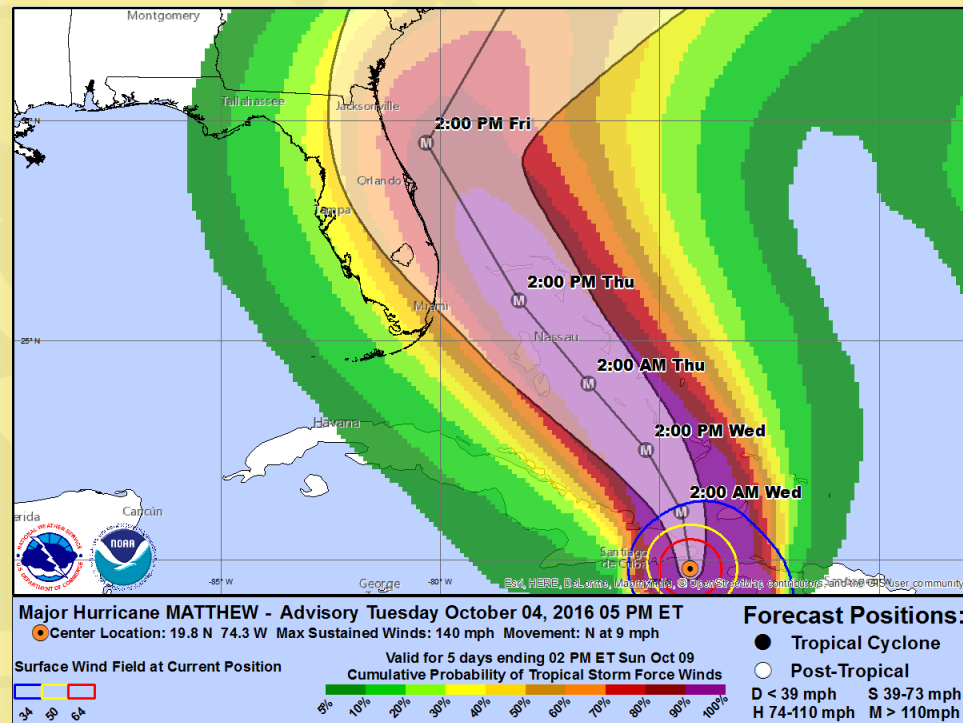
Five Day Cone of Uncertainty And Area of Potential Impacts



Based on the latest NHC forecast:

- Matthew's closest approach to northeast Florida and southeast Georgia will likely be Friday and Friday night.
- Matthew will bring significant marine and coastal concerns to Northeast Florida and Southeast Georgia.
- **Based on our normal track error the storm could track onshore HEED the advice of Emergency Officials**

NOTE: The forecast cone (shaded white area and hatched area in the graphic) is where the center of the storm is expected to track 2/3 of the time.



Residents and interests in north Florida and southeast Georgia should closely monitor the future progress of the storm. Be careful about rumors and social media posts. The storm could pose a threat to the region within 72 hours.



Local Impacts

High Confidence of Significant Coastal Impacts Late This Week



Expected Coastal Impacts:

- **Life Threatening Storm Surge is Possible.**
- **Large, Destructive surf.**
- Dangerous, frequent rip currents.
- Significant beach erosion.
- Tropical Storm Conditions possibly beginning Thursday night for northeast Florida coastal areas and late Thursday night or Friday morning for southeast Georgia coastal areas.

Marine Impacts:

- Building seas and increasing winds beginning today (not totally due to the hurricane).
- Tropical Storm Conditions possible Thursday evening through Saturday.

Potential Local Impacts if the track shifts farther west (left) of current track:

- Coastal flooding and heavy rainfall.
- Damaging winds.



Residents and interests in north Florida and southeast Georgia should closely monitor the future progress of the storm. Be careful about rumors and social media posts. The storm could pose a threat to the region within 72 hours.

6

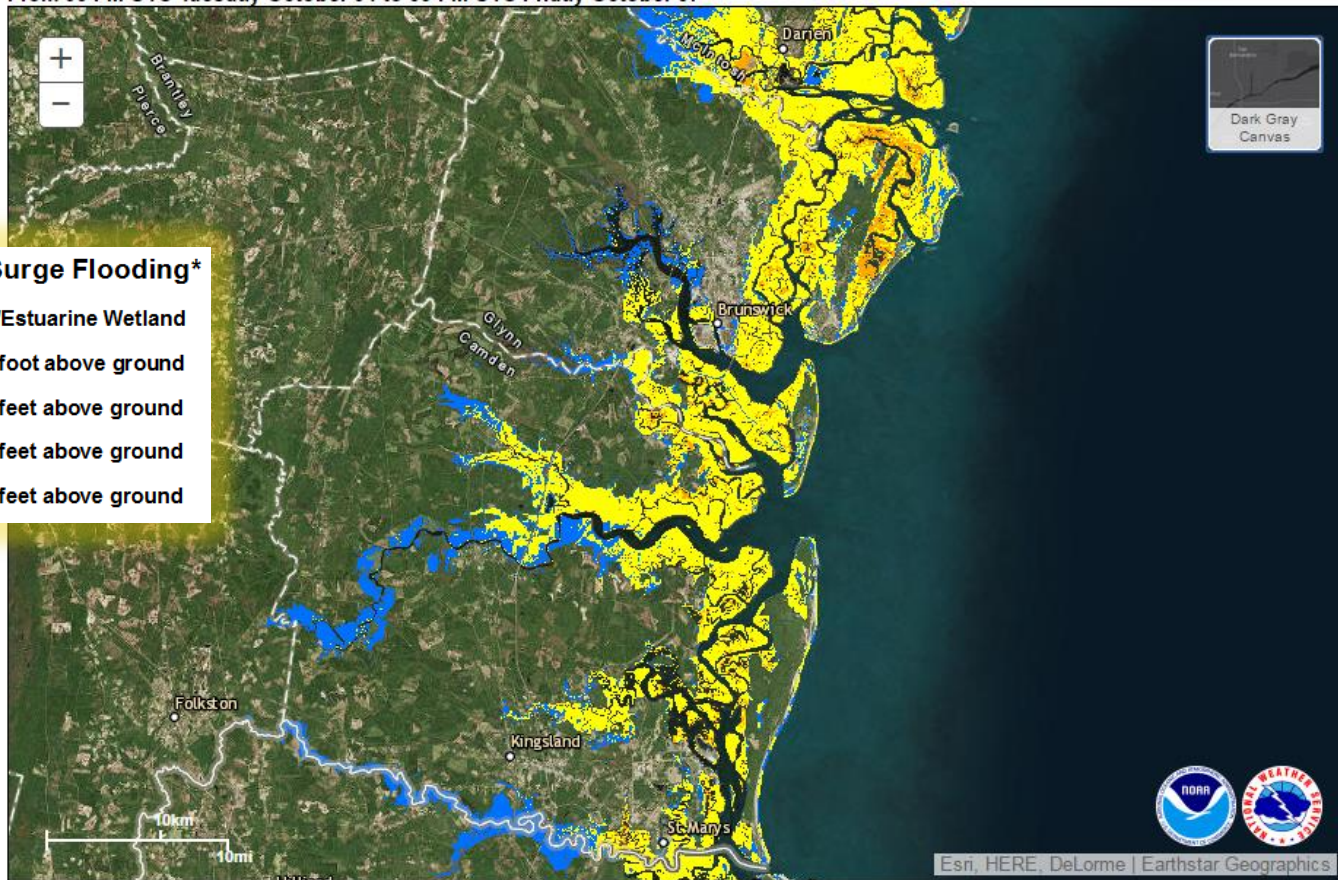


Possible Storm Tide Inundation

Along the Current track, These Values are expected to increase as we get closer to the event!



NHC Potential Storm Surge Flooding Map
Hurricane MATTHEW (2016) Advisory 26
From 03 PM UTC Tuesday October 04 to 09 PM UTC Friday October 07



Residents and interests in north Florida and southeast Georgia should closely monitor the future progress of the storm. Be careful about rumors and social media posts. The storm could pose a threat to the region within 72 hours.

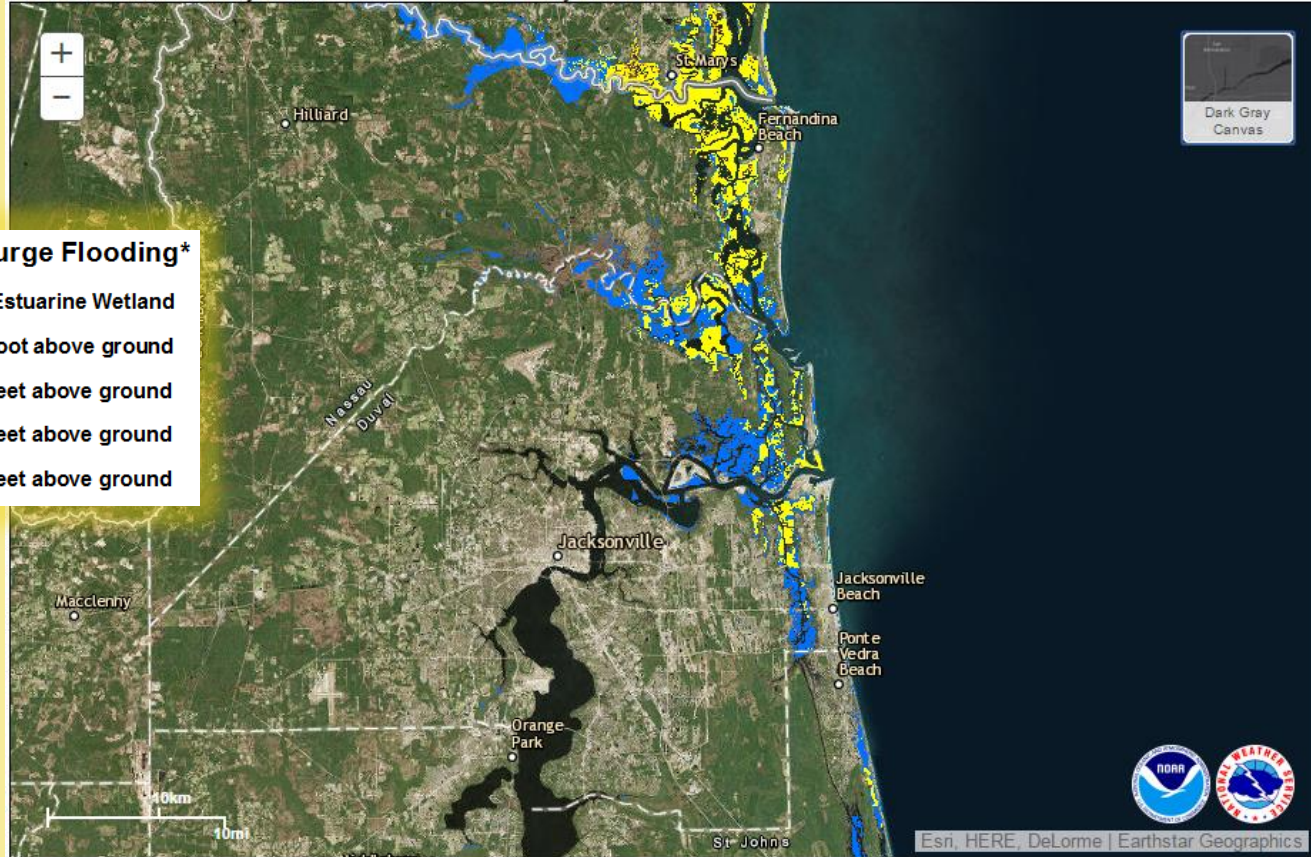


Possible Storm Tide Inundation

Along the Current track, These Values are expected to increase as we get closer to the event!



NHC Potential Storm Surge Flooding Map
Hurricane MATTHEW (2016) Advisory 26
From 03 PM UTC Tuesday October 04 to 09 PM UTC Friday October 07



Potential Storm Surge Flooding*

- Intertidal Zone/Estuarine Wetland
- Greater than 1 foot above ground
- Greater than 3 feet above ground
- Greater than 6 feet above ground
- Greater than 9 feet above ground

Residents and interests in north Florida and southeast Georgia should closely monitor the future progress of the storm. Be careful about rumors and social media posts. The storm ***could*** pose a threat to the region within 72 hours.

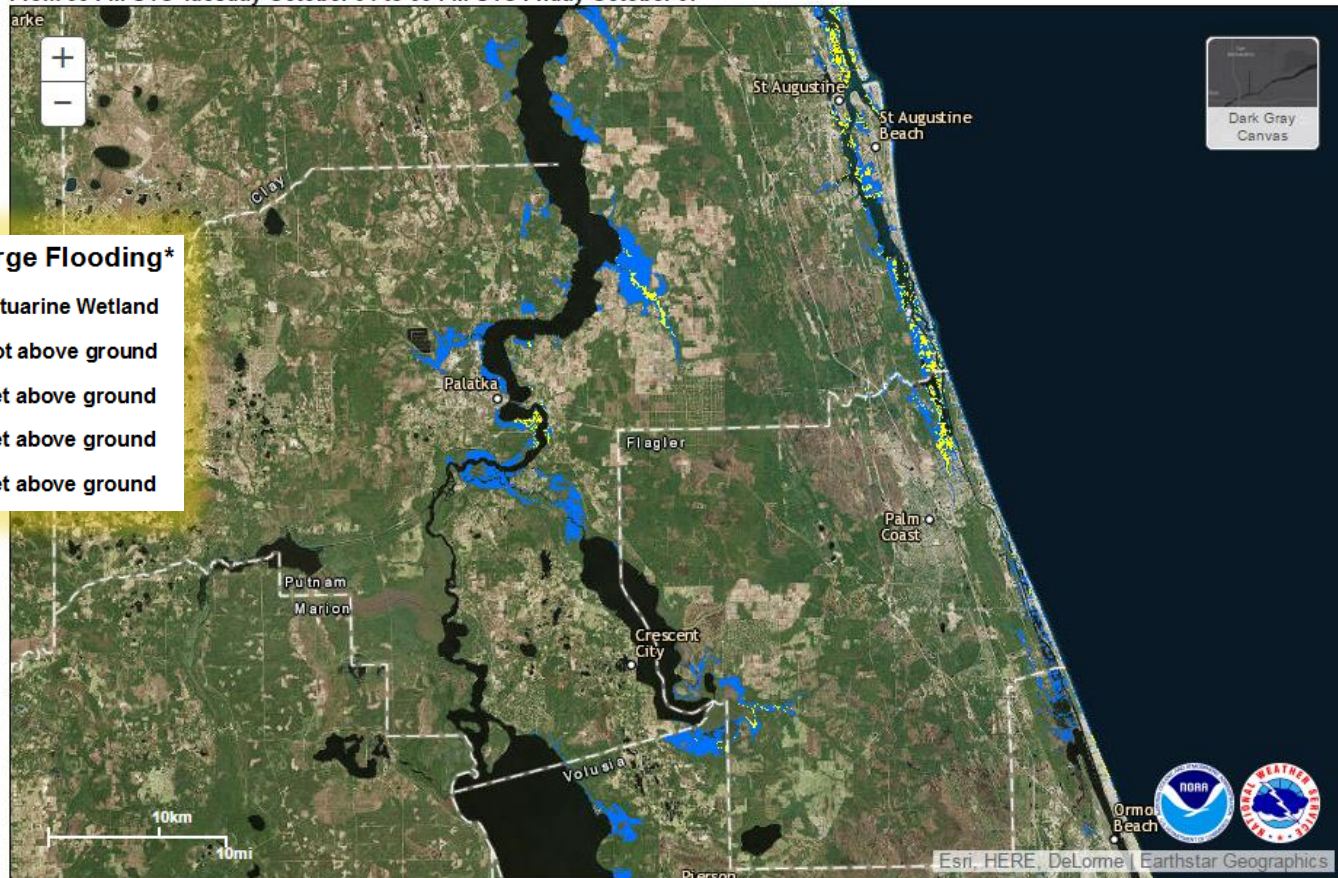


Possible Storm Tide Inundation

Along the Current track, These Values are expected to increase as we get closer to the event!



NHC Potential Storm Surge Flooding Map
Hurricane MATTHEW (2016) Advisory 26
From 03 PM UTC Tuesday October 04 to 09 PM UTC Friday October 07



Potential Storm Surge Flooding*

- Intertidal Zone/Estuarine Wetland
- Greater than 1 foot above ground
- Greater than 3 feet above ground
- Greater than 6 feet above ground
- Greater than 9 feet above ground

Residents and interests in north Florida and southeast Georgia should closely monitor the future progress of the storm. Be careful about rumors and social media posts. The storm could pose a threat to the region within 72 hours.



THINGS TO KNOW ABOUT

BEING PREPARED FOR A HURRICANE



1 Writing down your plan will ensure you don't make mistakes when faced with an emergency.



2 Document all of your valuables and possessions with a camera or video camera well before the storm.



3 Gather all vital documents, like passports and medical records, and put them somewhere that you can quickly access.



4 Make planning and preparedness a family affair to ensure everyone knows what to do.



5 It does NOT matter how many hurricanes are forecast for this year. It only takes one storm.

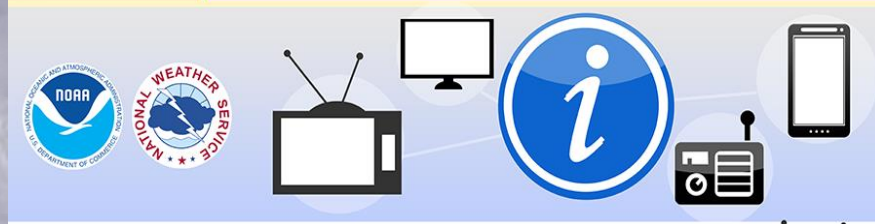


For more Hurricane Safety Information, visit weather.gov/hurricanesafety



THINGS TO KNOW ABOUT

WHERE TO GET HURRICANE INFO



1 Television - Tune in to your trusted local news source.



2 Phone - Access mobile.weather.gov on your mobile phone and get Wireless Emergency Alerts.



3 Radio - Receive forecast information and news on your NOAA Weather Radio.



4 Social Media - Follow official government agencies, trusted media partners, and share critical info with friends and family.



5 Computer - Access information from weather.gov, ready.gov and flash.org.



For more Hurricane Safety Information, visit weather.gov/hurricanesafety



Major Hurricane Matthew

Talking Points



- On the current official forecast track, the closest approach of Hurricane Matthew to the local coast would be Friday and Friday night.
- Potential Impacts:
 - Gusty onshore winds, high surf, beach erosion, and frequent rip currents expected to develop on Wednesday. Local wind impacts will be similar to a strong local nor'easter.
 - Tropical Storm Conditions possible over the northeast Florida adjacent Atlantic waters Thursday evening and the southeast Georgia adjacent Atlantic waters Thursday night.
 - Hurricane Conditions possible over the adjacent Atlantic waters Friday.
 - Tropical Storm Conditions possible over coastal counties Thursday night through early Saturday.
 - **A shift in the track farther west will increase local impacts.**
 - **HEED the advice of local officials and Emergency Management.**
- Closely monitor the latest forecast from NHC/NWS Jacksonville for updates. The next scheduled briefing will be issued around 1215 pm Tuesday afternoon.
- Complete stocking your hurricane supply kits. Review your evacuation plan.

Residents and interests in north Florida and southeast Georgia should closely monitor the future progress of the storm. Be careful about rumors and social media posts. The storm could pose a threat to the region within 72 hours.

11