



# Strong to Severe T'storms Possible Wednesday, February 15

**NWS WFO Jacksonville, Florida**  
**Tuesday, February 14, 2017**  
**1:00 PM EST**



[@NWSJacksonville](https://twitter.com/NWSJacksonville)

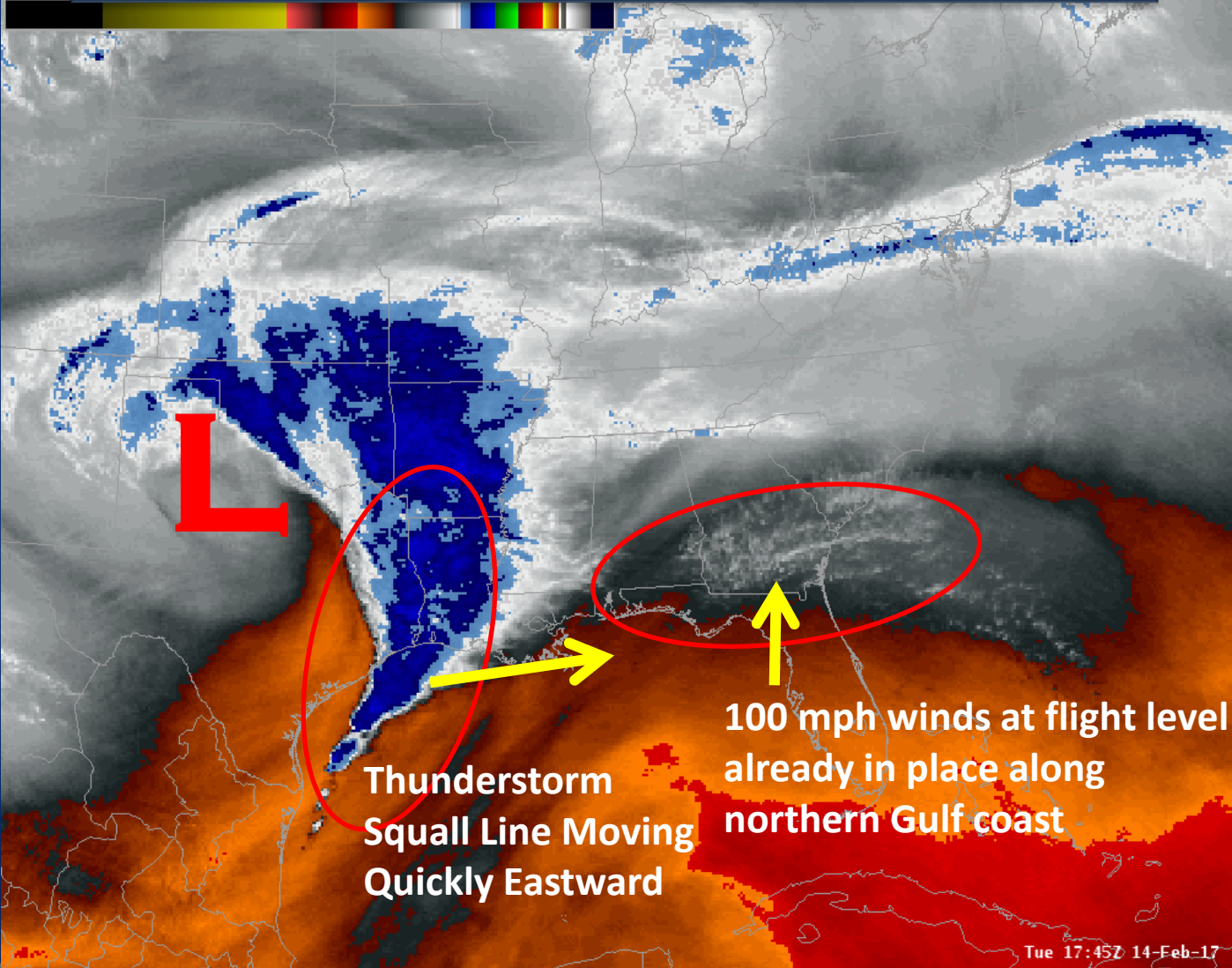
[Weather.gov/jax](http://Weather.gov/jax)



US National Weather Service Jacksonville



# Tuesday Early Afternoon Water Vapor Satellite





# Strong to Severe T'storms Possible Wednesday



1. There is a threat for strong to severe thunderstorms to impact southeast Georgia and northeast Florida on Wednesday.
2. The Storm Prediction Center (SPC) has included our entire region within a marginal risk for severe thunderstorm development, with **damaging wind gusts, hail, and isolated tornadoes** possible. Portions of our region may be upgraded to a slight risk in future SPC outlooks.
3. A broken line of thunderstorms will impact inland southeast Georgia and the Suwannee Valley on Wednesday morning, progressing rapidly eastward into coastal southeast Georgia and northeast Florida during the early to mid afternoon hours. Embedded supercell thunderstorms will be possible given very strong wind shear in place and moderate atmospheric instability.





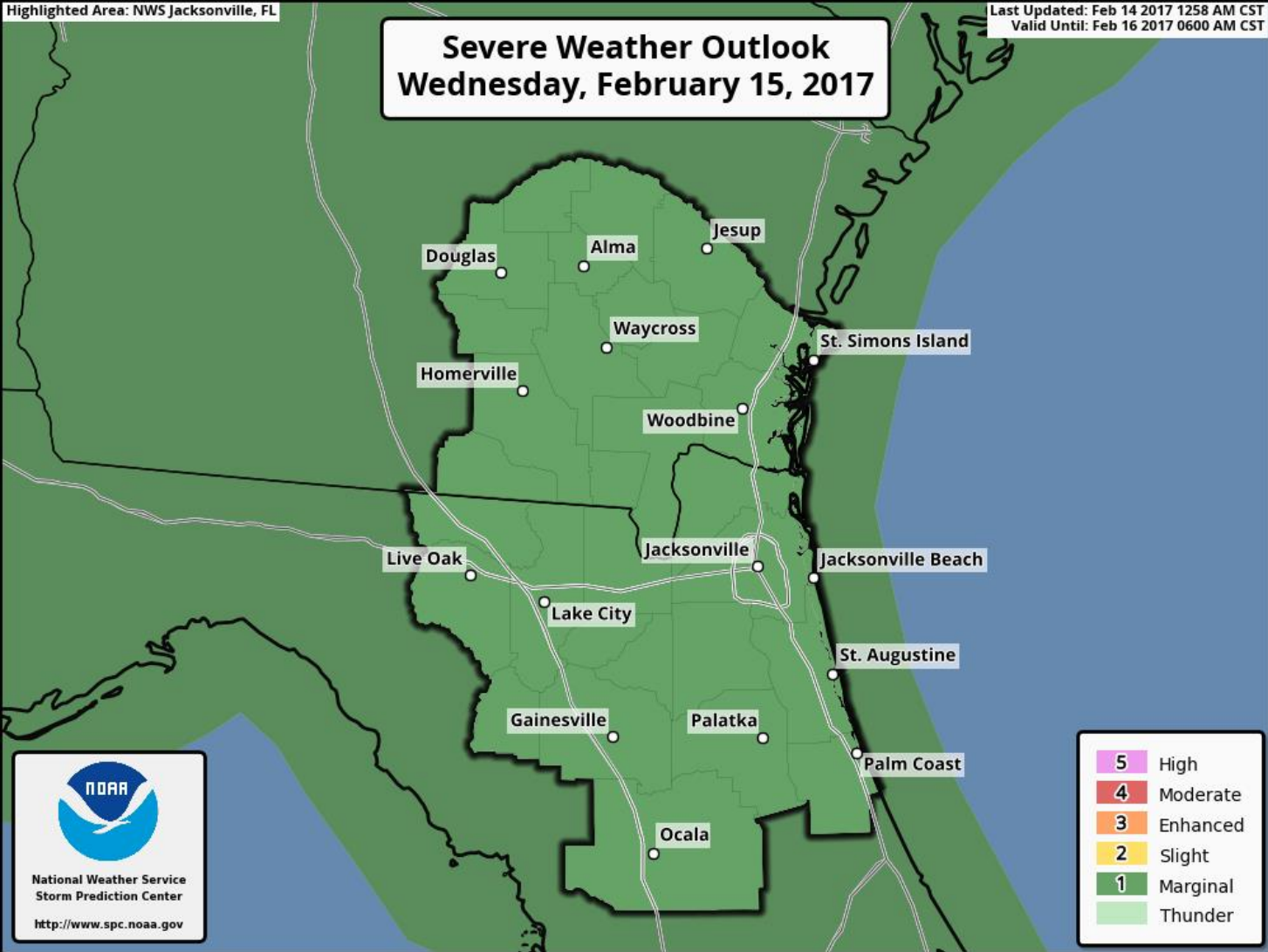
# Storm Prediction Center Outlook - Wednesday



Highlighted Area: NWS Jacksonville, FL

Last Updated: Feb 14 2017 12:58 AM CST  
Valid Until: Feb 16 2017 06:00 AM CST

## Severe Weather Outlook Wednesday, February 15, 2017



### 1 - MARGINAL (MRGL)

Isolated severe thunderstorms possible

Limited in duration and/or coverage and/or intensity



- Winds 40-60 mph
- Hail up to 1"
- Low tornado risk



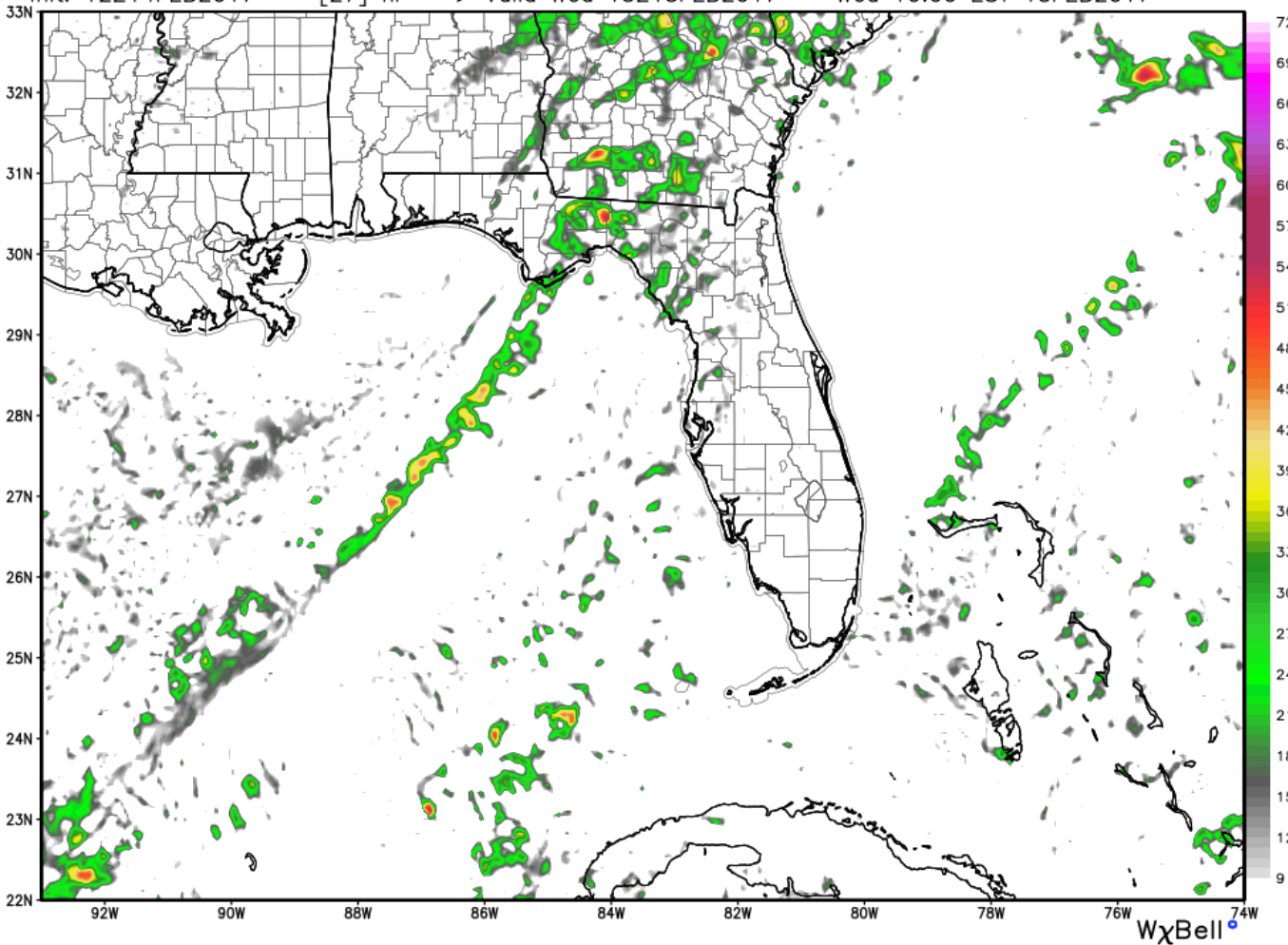




# Simulated Radar Reflectivity 10 AM Wednesday

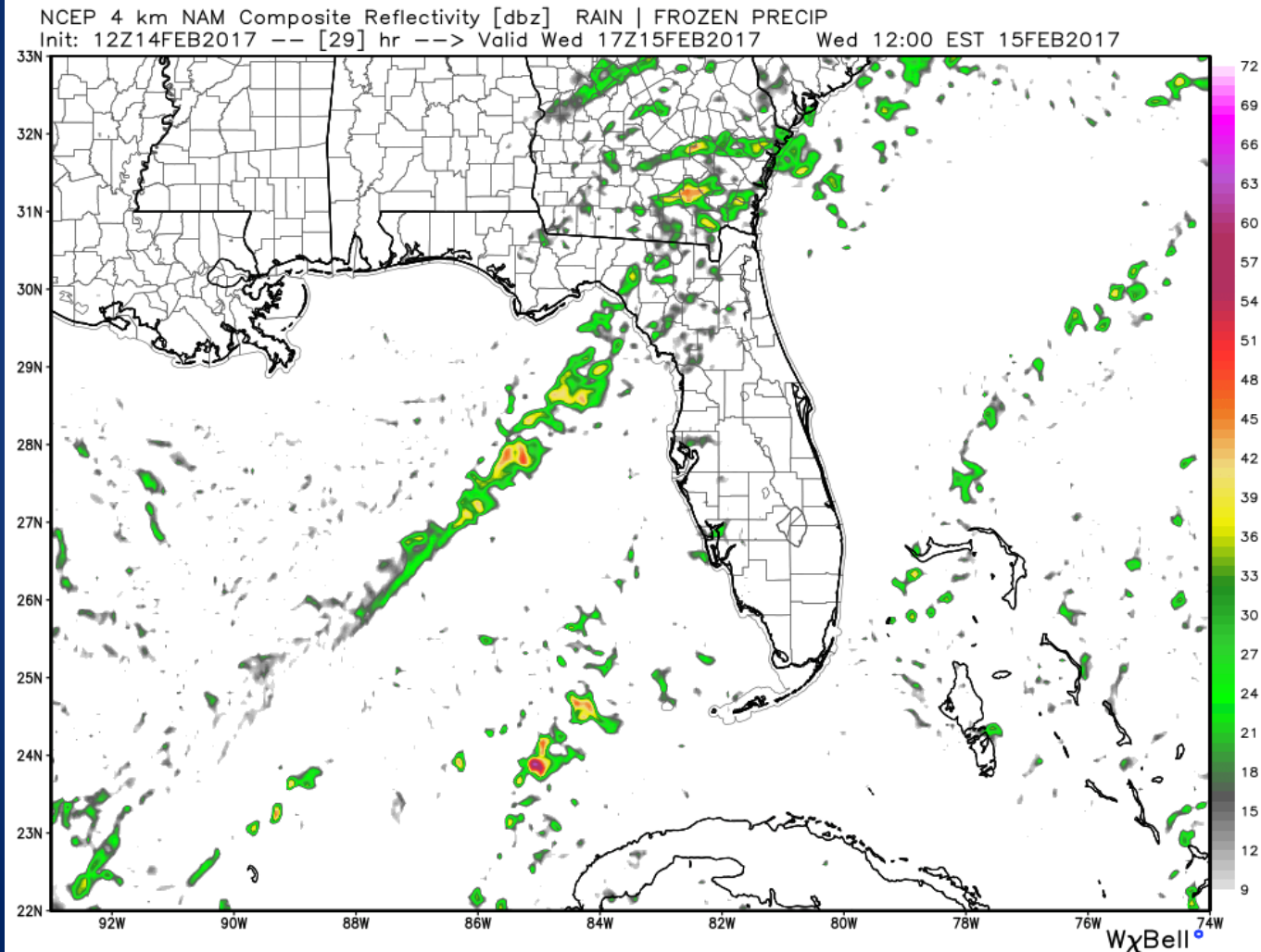


NCEP 4 km NAM Composite Reflectivity [dbz] RAIN | FROZEN PRECIP  
Init: 12Z14FEB2017 -- [27] hr --> Valid Wed 15Z15FEB2017 Wed 10:00 EST 15FEB2017





# Simulated Radar Reflectivity Noon Wednesday

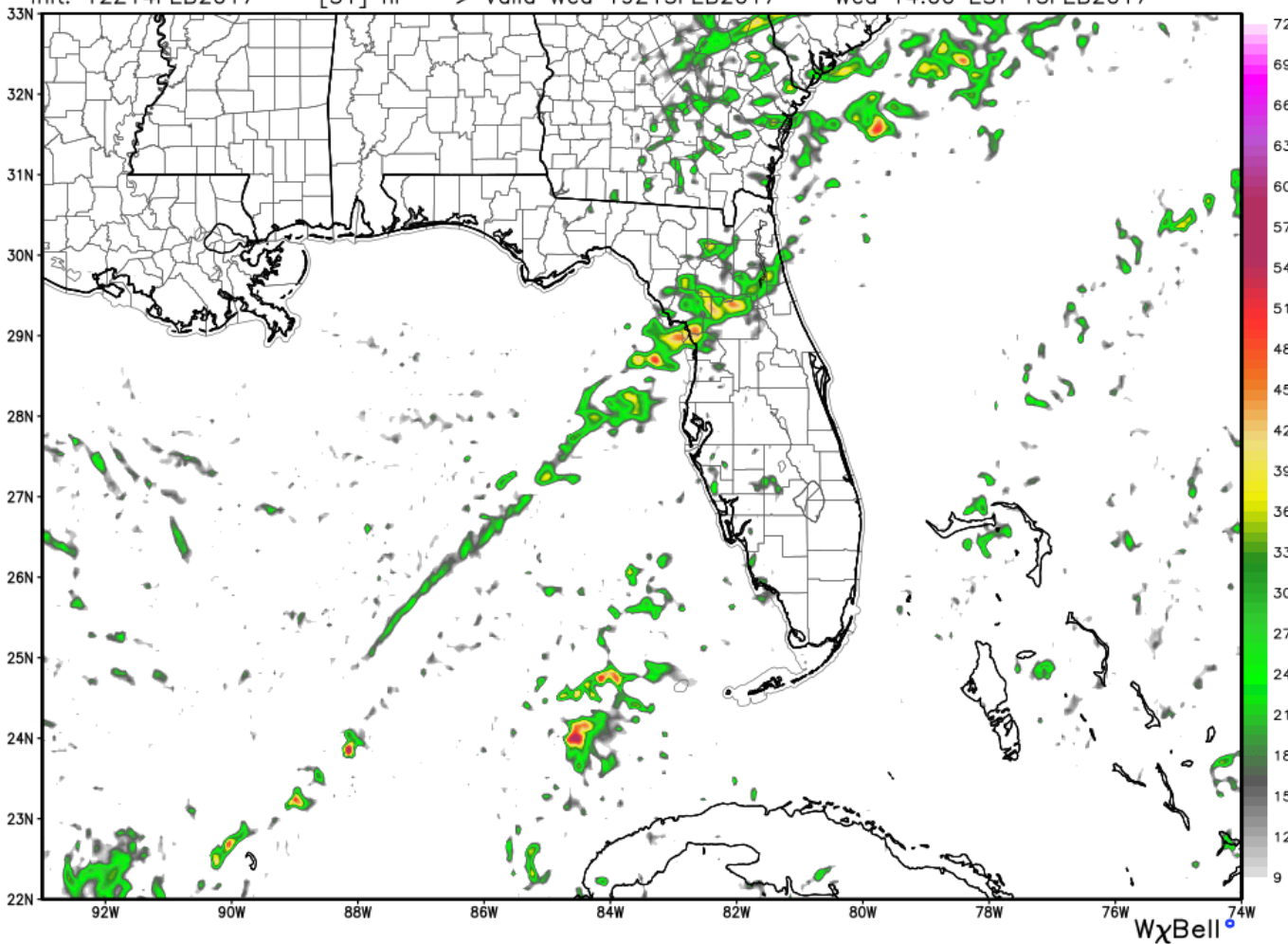




# Simulated Radar Reflectivity 2 PM Wednesday



NCEP 4 km NAM Composite Reflectivity [dbz] RAIN | FROZEN PRECIP  
Init: 12Z14FEB2017 -- [31] hr --> Valid Wed 19Z15FEB2017 Wed 14:00 EST 15FEB2017



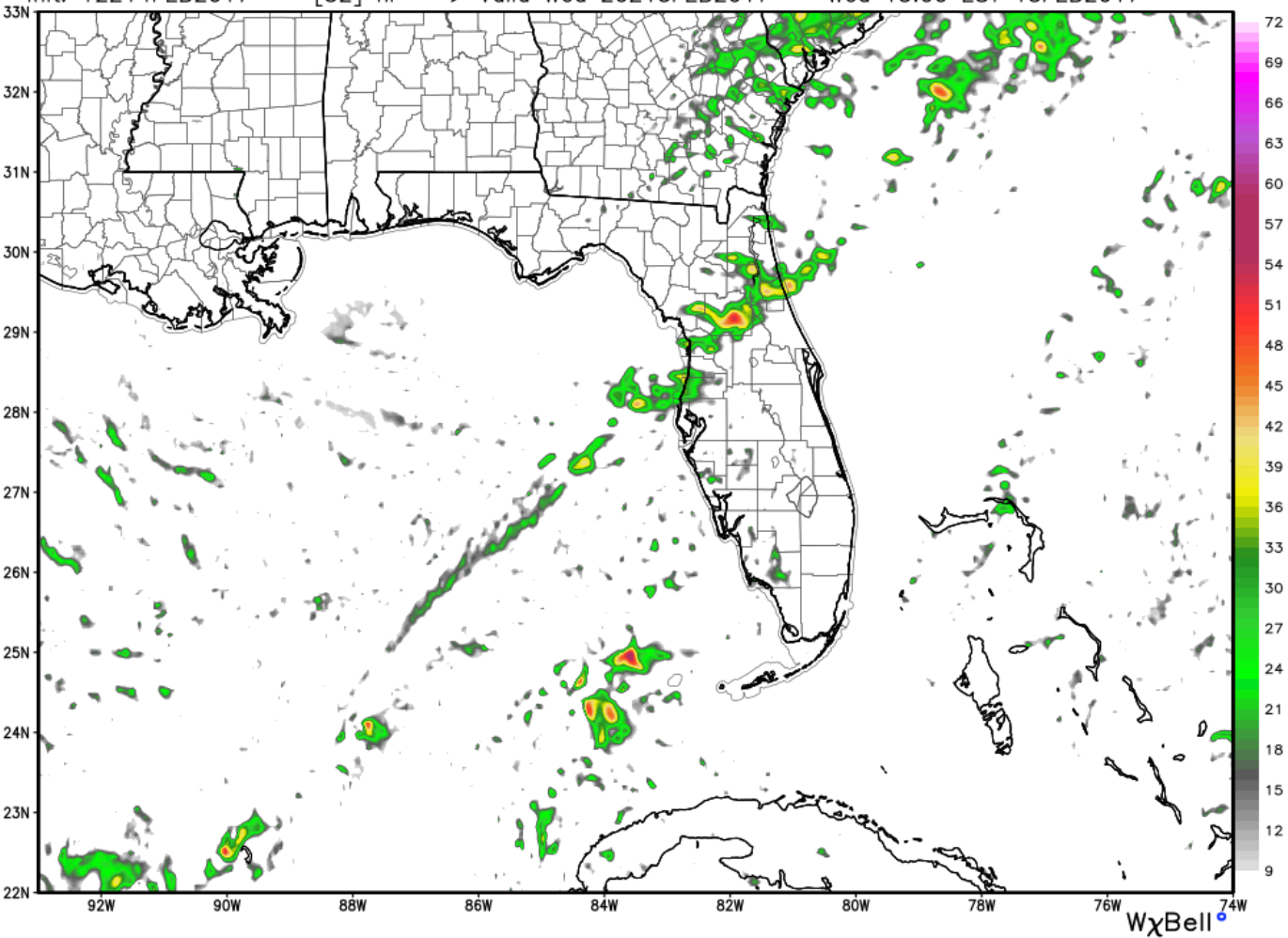




# Simulated Radar Reflectivity 3 PM Wednesday



NCEP 4 km NAM Composite Reflectivity [dbz] RAIN | FROZEN PRECIP  
Init: 12Z14FEB2017 -- [32] hr --> Valid Wed 20Z15FEB2017 Wed 15:00 EST 15FEB2017







# Strong to Severe T'Storms Wed. Threat Summary



1. There is a threat for strong to severe thunderstorms to impact southeast Georgia and northeast Florida on Wednesday.
2. SPC has included our entire region within a marginal risk for severe thunderstorm development, with **damaging wind gusts, hail, and isolated tornadoes** possible. Portions of our region may be upgraded to a slight risk in future SPC outlooks.
3. A broken line of thunderstorms will impact inland southeast Georgia and the Suwannee Valley on Wednesday morning, progressing rapidly eastward into coastal southeast Georgia and northeast Florida during the early to mid afternoon hours. Embedded supercell thunderstorms will be possible given very strong wind shear in place and moderate atmospheric instability.
4. Monitor NWS Jacksonville and local media outlets for changes and trends.
5. The next briefing will be issued early on Wednesday morning.





# Collaboration



- Please share this briefing information with other government decision-makers and partners.
- If you require any additional updates or have any specific questions, please contact NWS Jacksonville 24/7 and speak with a forecaster.

# Maintain Situational Awareness!



[weather.gov/jax](http://weather.gov/jax)

[facebook.com/NWSJacksonville](https://facebook.com/NWSJacksonville)  
[Twitter @NWSJacksonville](https://twitter.com/NWSJacksonville)

National Weather Service Weather Forecast Office  
Jacksonville, FL

Home Site Map News Organization Search for: [ ] NWS

Top News of the Day

- Zone Changes for Duval & Nassau Counties
- 2014-2015 Spotter Classes - Register Here!
- Multimedia Briefing on Storm Prediction Center's Changes to Convective Outlooks
- Check out our New Social Media Hub!

Local forecast by "City, ST" or Zip Code  
City, ST [ ] Go

RSS Feeds

Current Hazards

Local

Nationwide

Outlooks

EM Page

Severe Storm Report

Severe Marine Report

Forecast

Local

Forecast Discussion

Activity Planner

Graphical

Tropical Weather

Fire Weather

Aviation Weather

Marine Weather

Rip Currents

Hourly Forecast

Model Data

Local News Feeds

Current Weather

Observations

Satellite Images

Rivers/Lakes

Air Quality

Radar Imagery

US National Weather Service Jacksonville Florida Government Organization

Timeline About Photos Reviews More

6,774 likes 102 visits

Dave Shuler, Jason Hess and 10 other friends like this or have been here.

What have you been up to?

US National Weather Service Jacksonville Florida shared a link.  
Posted by Hootsuite 2 hours ago

Latest NWS JAX Blog Update on heavy rain and severe wx potential late Tuesday and Wednesday. <http://go.usa.gov/MdS4> #jaxwx #jaxwx #flwx

Recent

- 2014
- 2013
- 2012
- 2011
- 1996
- 1971
- 1966
- 1956
- 1934
- 1930
- 1915
- 1902
- 1890
- 1880
- 1871
- Founded

See Your Ad Here

## Your Mobile Device Could Save Your Life

text messaging service

There are multiple ways to receive warnings at your fingertips

social media

mobile.weather.gov

weather apps

from your family and friends

wireless emergency alerts - WEA



[mobile.weather.gov](http://mobile.weather.gov)

