



Major Hurricane Matthew Briefing

08:30 Situation Overview



...More Eastward Track, but Storm Surge is still a threat...

- ☞ Storm surge flooding and beach erosion damage is anticipated for coastal areas today into tonight.
- ☞ Major Hurricane Matthew is forecasted by the National Hurricane Center to move close to but paralleling the Florida and southeast Georgia coast today into Saturday with the strongest wind *impacts* expected along and near the coast.
- ☞ The current movement and forecast track GREATLY reduce the possibility of a direct impact by MAJOR hurricane conditions however strong tropical storm to hurricane conditions are likely.
- ☞ So far...weather observations from central Florida reports indicate there are no major hurricane force winds coming inland on the western (weaker) side of the storm.
- ☞ The western eyewall is forecasted to move slightly further eastward over the adjacent Atlantic with sustained winds 110 to 115 mph and gusts to 140 mph expected well offshore. Winds over the Immediate Flagler and St Johns County coastal areas will be 60 to 80 mph with gusts up to 100 mph by late morning and this afternoon.
- ☞ Seas at the Cape Canaveral East Buoy are near 30 feet as the eye passes. This means breakers will not be as high as anticipated when a category 4 hurricane was forecast right off our coast. Now 10 to 15 feet.
- ☞ Winds could be higher in high rise structures such as in Downtown Jacksonville and high beachfront condos possibly up to Category 2 intensity.
- ☞ Some of the lowest barrier islands will be partially overtopped with battering waves and life threatening flooding. *The level of damage along the immediate beaches should be much less than earlier anticipated.*

The storm poses an imminent threat of tropical storm and/or hurricane conditions to SOME PORTION of the Warning area. Heed the advice of Local officials. Be careful about rumors, erroneous social media posts and unwarranted speculation.

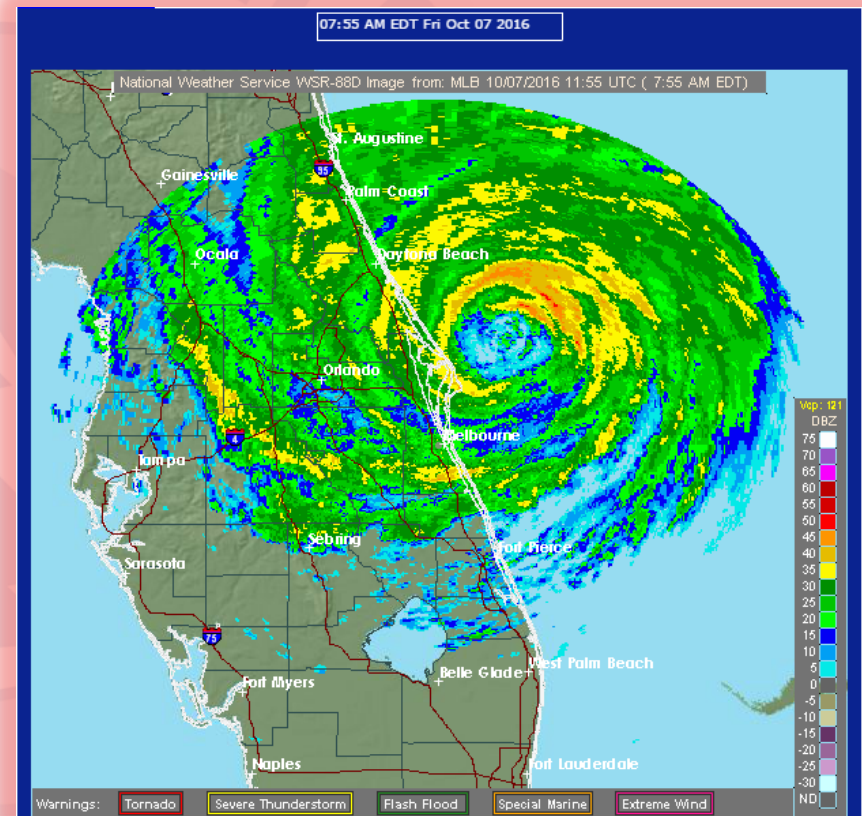
1



Hurricane Matthew Unfolding Conditions



- The event is starting to unfold, Tropical storm wind conditions with near hurricane force winds gusts are now occurring from South Brevard County through Indian River, Saint Lucie, and Martin Counties.
- Reports of downed trees and powerlines are coming out of central Florida.
- Tropical force wind gusts starting to work into the near coast of St. Johns, Flagler and Duval Counties.
- Outer rain bands working into the Northeast Florida region.
- Deteriorating conditions as the day progresses.

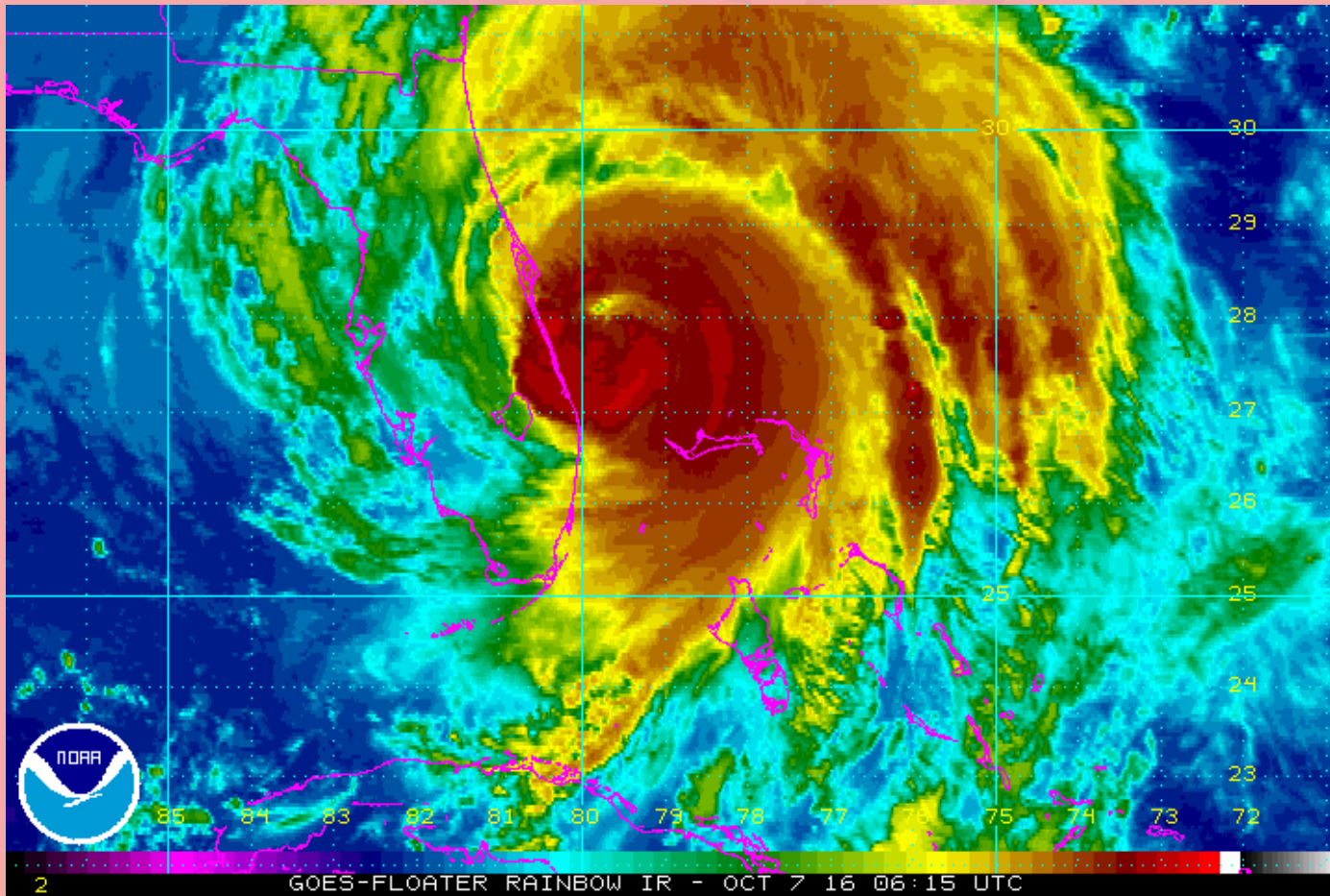


The storm poses an imminent threat of tropical storm and/or hurricane conditions to **SOME PORTION** of the Warning area. Heed the advice of Local officials. Be careful about rumors, erroneous social media posts and unwarranted speculation.



Matthew Remains a Major Hurricane!

WARNING!
A Hurricane Warning means hurricane conditions can be expected in some portion of the warned area within the next 36 hours.

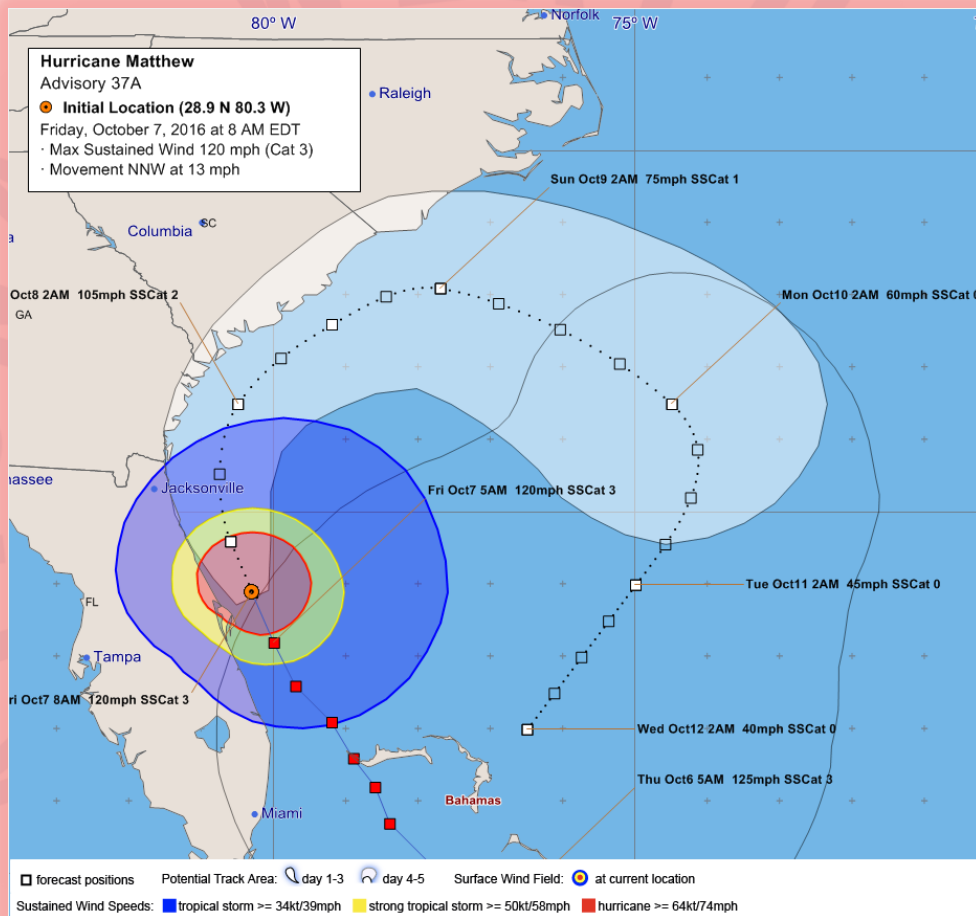


The storm poses an imminent threat of tropical storm and/or hurricane conditions to **SOME PORTION** of the Warning area. Heed the advice of Local officials. Be careful about rumors, erroneous social media posts and unwarranted speculation.

3



Latest Official NHC Forecast Track of Matthew

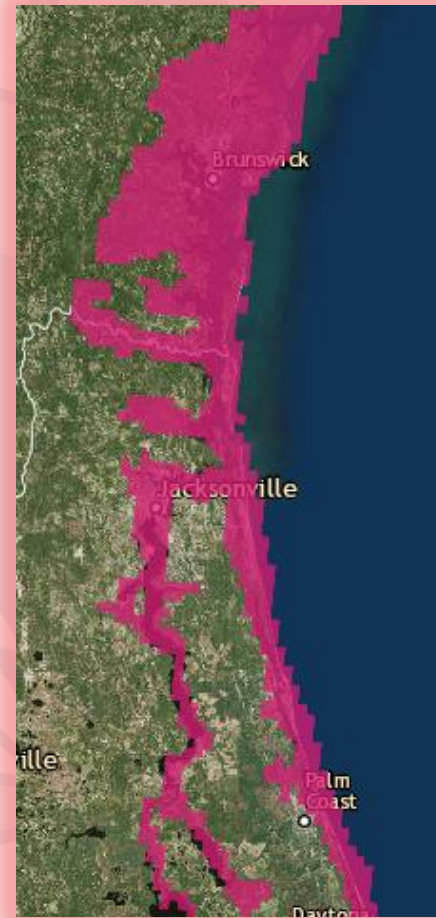
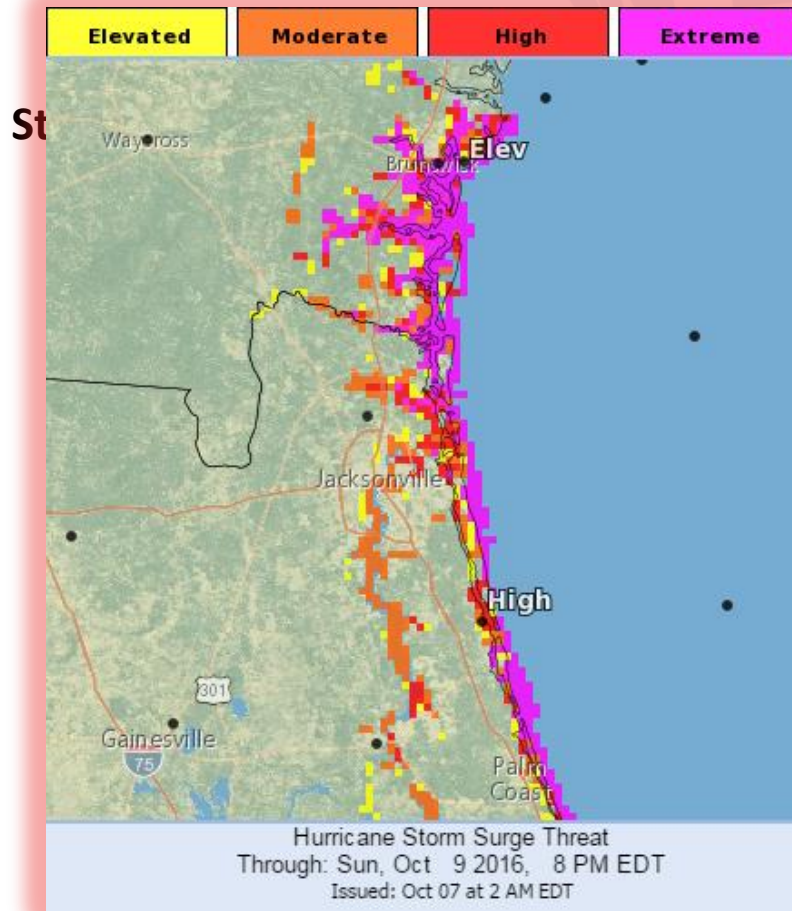


The storm poses an imminent threat of tropical storm and/or hurricane conditions to SOME PORTION of the Warning area. Heed the advice of Local officials. Be careful about rumors, erroneous social media posts and unwarranted speculation.





Storm Surge Threat and Warning



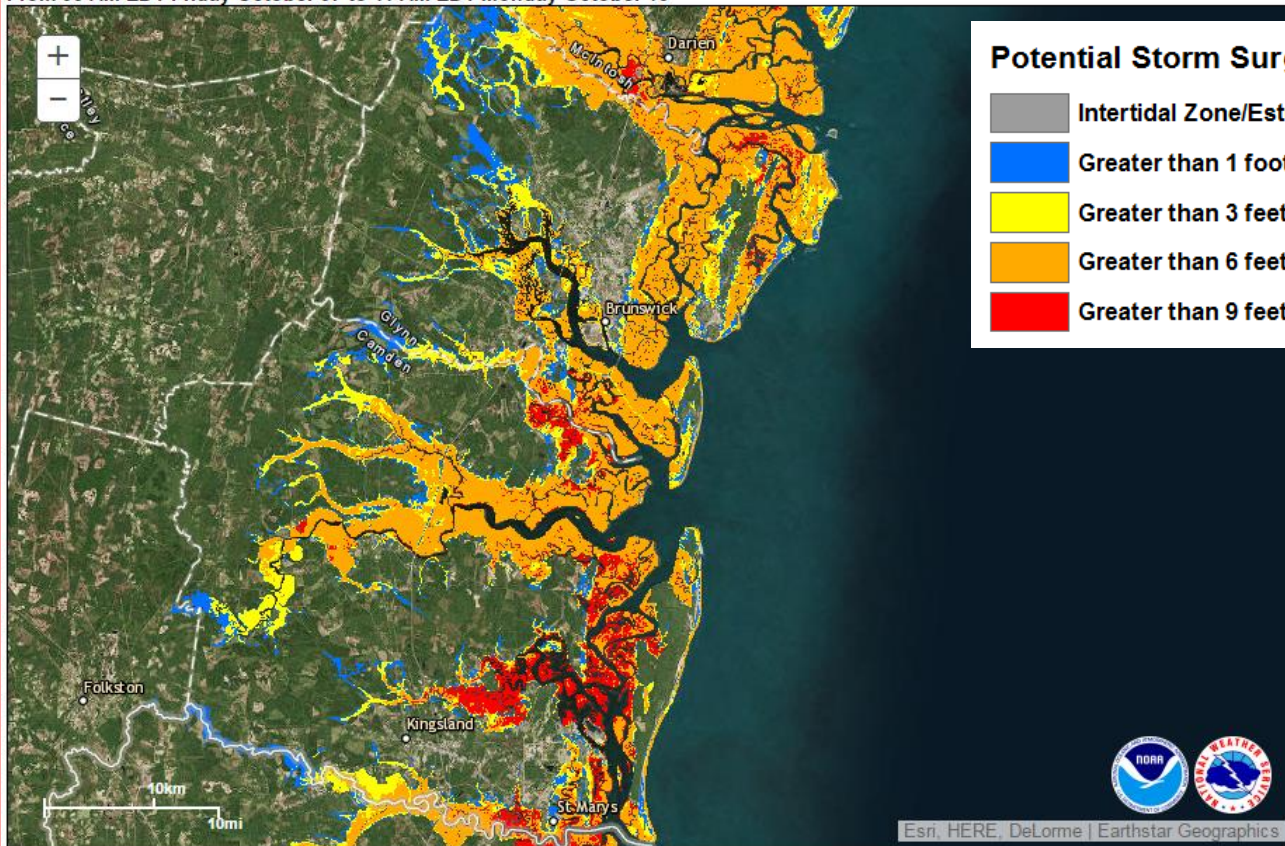
The storm poses an imminent threat of tropical storm and/or hurricane conditions to **SOME PORTION** of the Warning area. Heed the advice of Local officials. Be careful about rumors, erroneous social media posts and unwarranted speculation.



Reasonable Worst Case Storm Surge



NHC Potential Storm Surge Flooding Map
Hurricane MATTHEW (2016) Advisory 37
From 05 AM EDT Friday October 07 to 11 AM EDT Monday October 10



Potential Storm Surge Flooding*

- Intertidal Zone/Estuarine Wetland
- Greater than 1 foot above ground
- Greater than 3 feet above ground
- Greater than 6 feet above ground
- Greater than 9 feet above ground

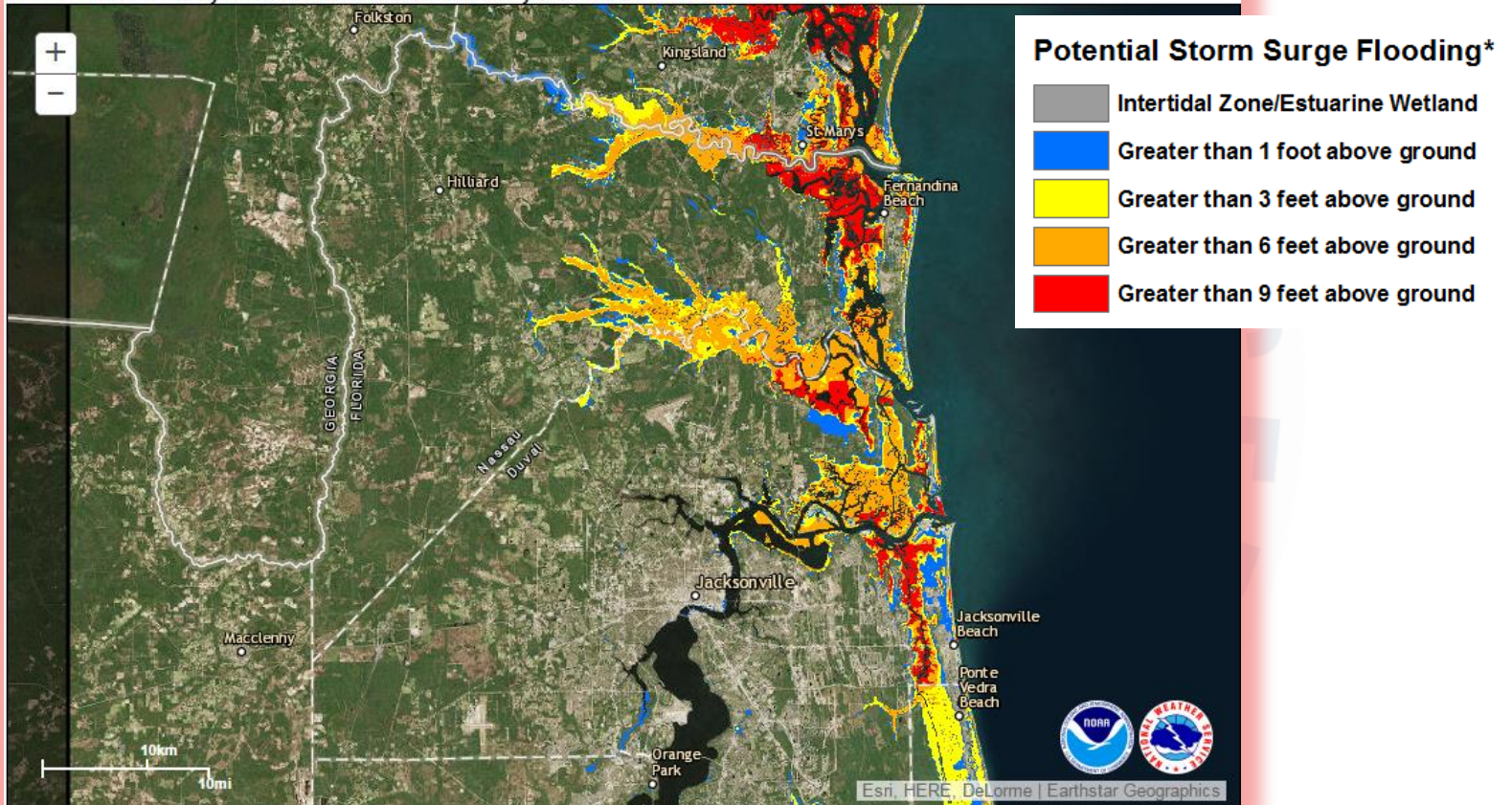
The storm poses an imminent threat of tropical storm and/or hurricane conditions to **SOME PORTION** of the Warning area. Heed the advice of Local officials. Be careful about rumors, erroneous social media posts and unwarranted speculation.



Reasonable Worst Case Storm Surge



NHC Potential Storm Surge Flooding Map
Hurricane MATTHEW (2016) Advisory 37
From 05 AM EDT Friday October 07 to 11 AM EDT Monday October 10



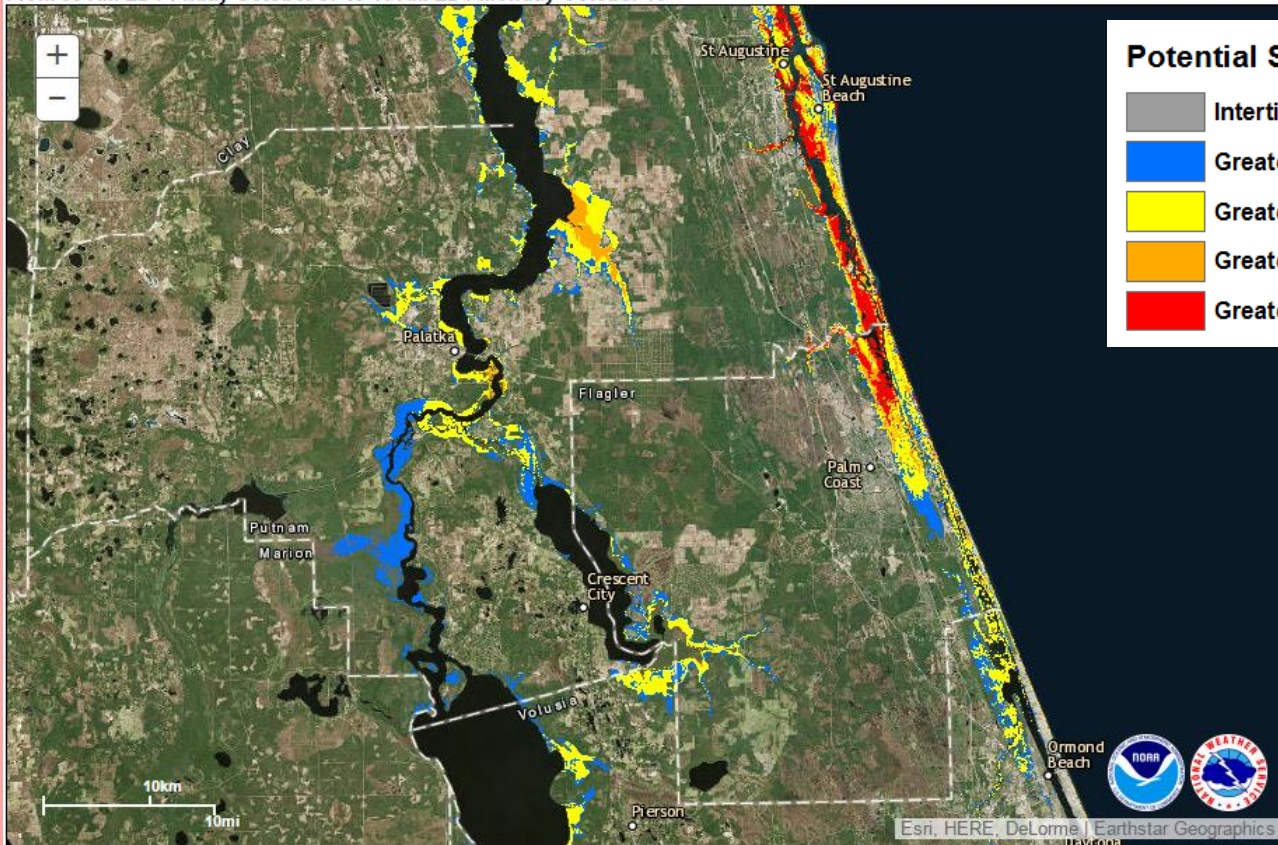
The storm poses an imminent threat of tropical storm and/or hurricane conditions to **SOME PORTION** of the Warning area. Heed the advice of Local officials. Be careful about rumors, erroneous social media posts and unwarranted speculation.



Reasonable Worst Case Storm Surge



NHC Potential Storm Surge Flooding Map
Hurricane MATTHEW (2016) Advisory 37
From 05 AM EDT Friday October 07 to 11 AM EDT Monday October 10



Potential Storm Surge Flooding*

- Intertidal Zone/Estuarine Wetland
- Greater than 1 foot above ground
- Greater than 3 feet above ground
- Greater than 6 feet above ground
- Greater than 9 feet above ground

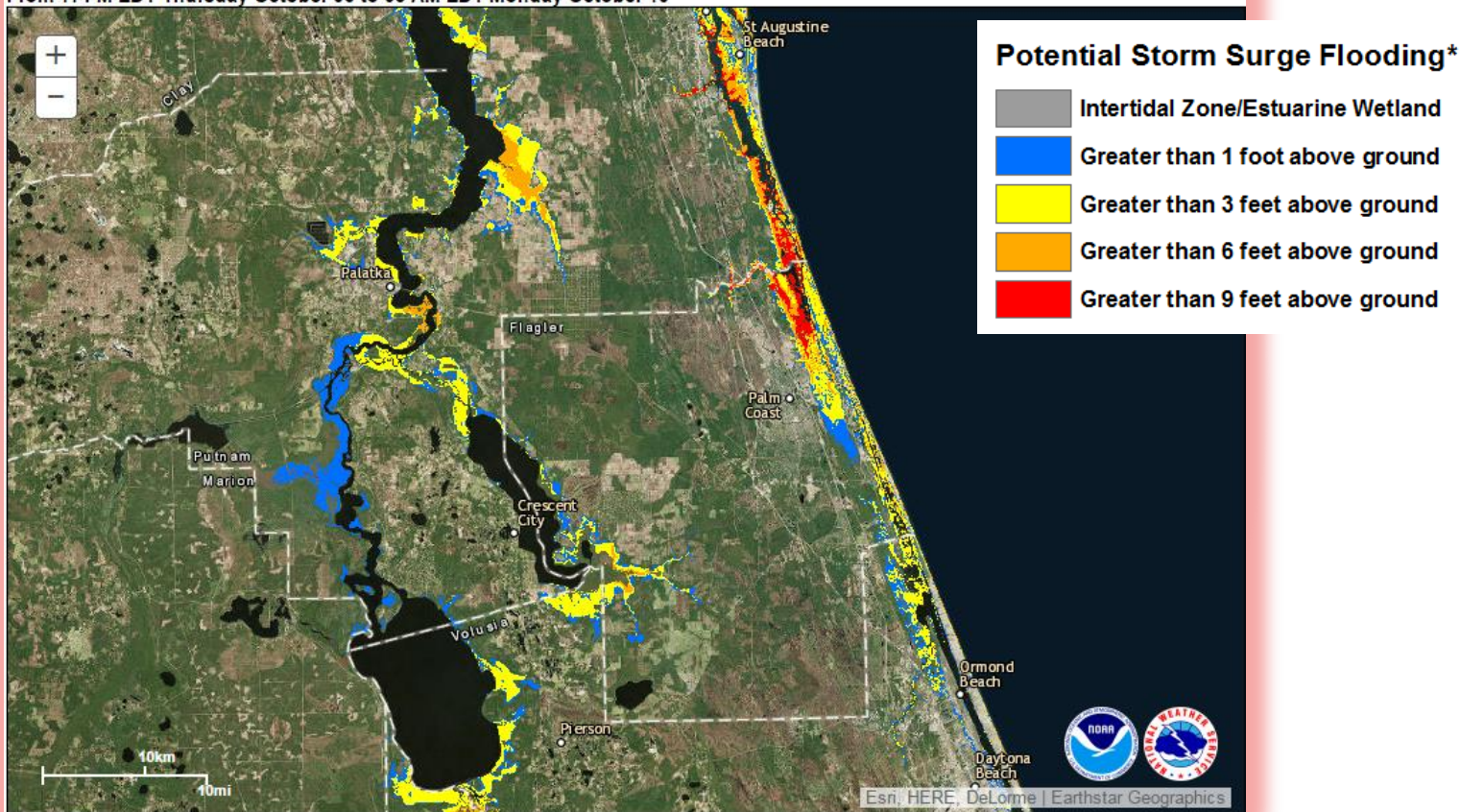
The storm poses an imminent threat of tropical storm and/or hurricane conditions to **SOME PORTION** of the Warning area. Heed the advice of Local officials. Be careful about rumors, erroneous social media posts and unwarranted speculation.



Reasonable Worst Case Storm Surge



NHC Potential Storm Surge Flooding Map
Hurricane MATTHEW (2016) Advisory 36
From 11 PM EDT Thursday October 06 to 05 AM EDT Monday October 10



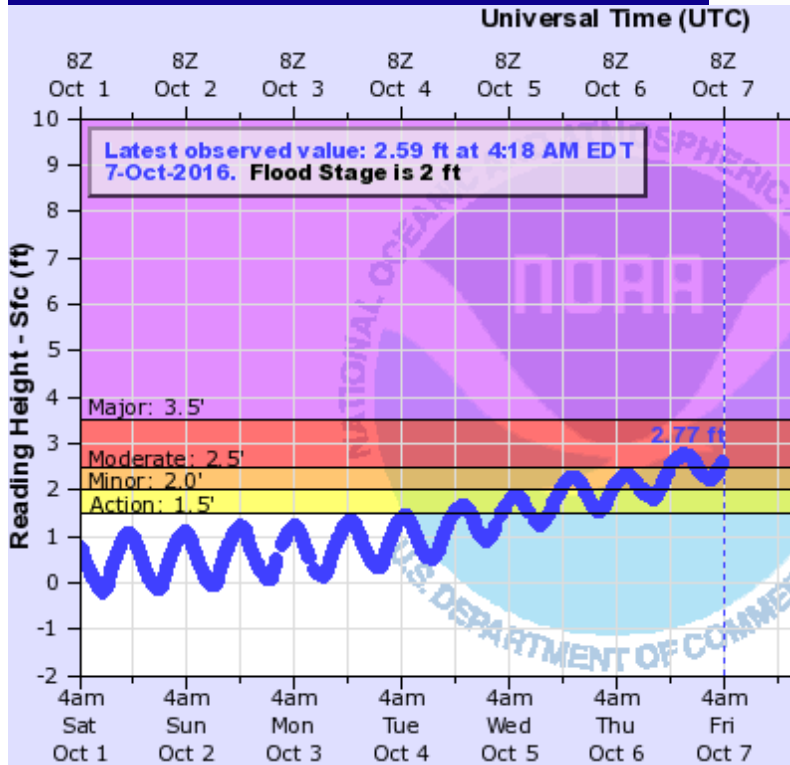
The storm poses an imminent threat of tropical storm and/or hurricane conditions to **SOME PORTION** of the Warning area. Heed the advice of Local officials. Be careful about rumors, erroneous social media posts and unwarranted speculation.



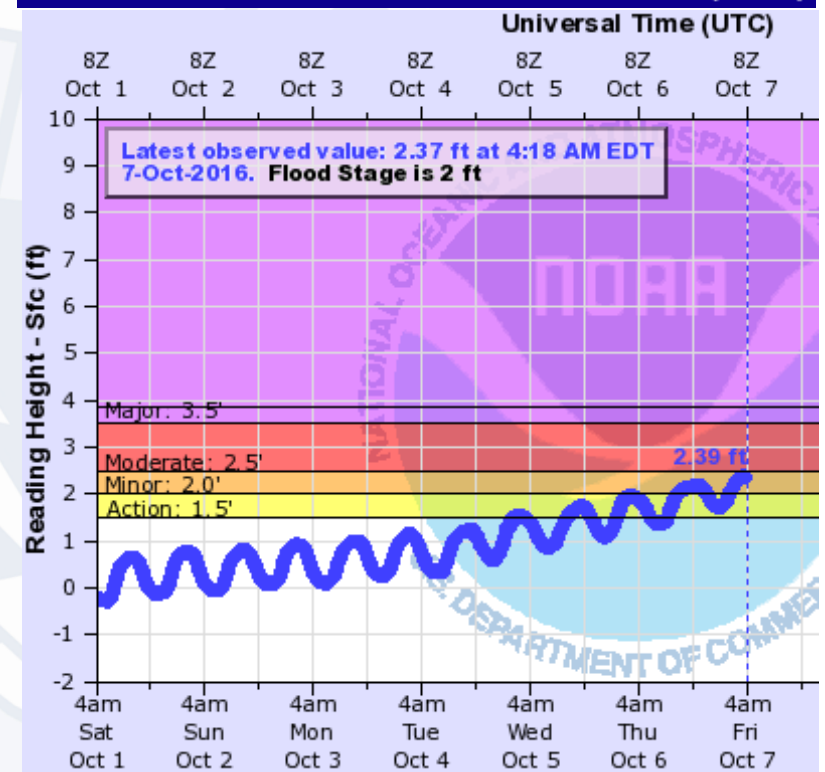
Rising Waters on the St. Johns



ST. JOHNS RIVER AT RACY POINT



ST. JOHNS RIVER AT BUCKMAN BRIDGE (I-295)



The storm poses an imminent threat of tropical storm and/or hurricane conditions to SOME PORTION of the Warning area. Heed the advice of Local officials. Be careful about rumors, erroneous social media posts and unwarranted speculation.



Local Impacts on NHC Track

Significant, but not devastating, coastal Impacts!!!



Expected Coastal Impacts:

- Life Threatening Storm Surge 5 to greater than 9 feet Above Ground Level along the immediate beaches and intra-Coastal Waterway possible with large wave action on top of it.
- St Johns River and many other estuaries 3 to 4 Feet in south and east facing creeks.
- Large, Damaging Breakers of 10 to 15 feet.
- Possible over wash of lower barrier islands.
- Damage to some lower coastal roads is possible.
- Some structural collapse along the immediate coast is still possible.



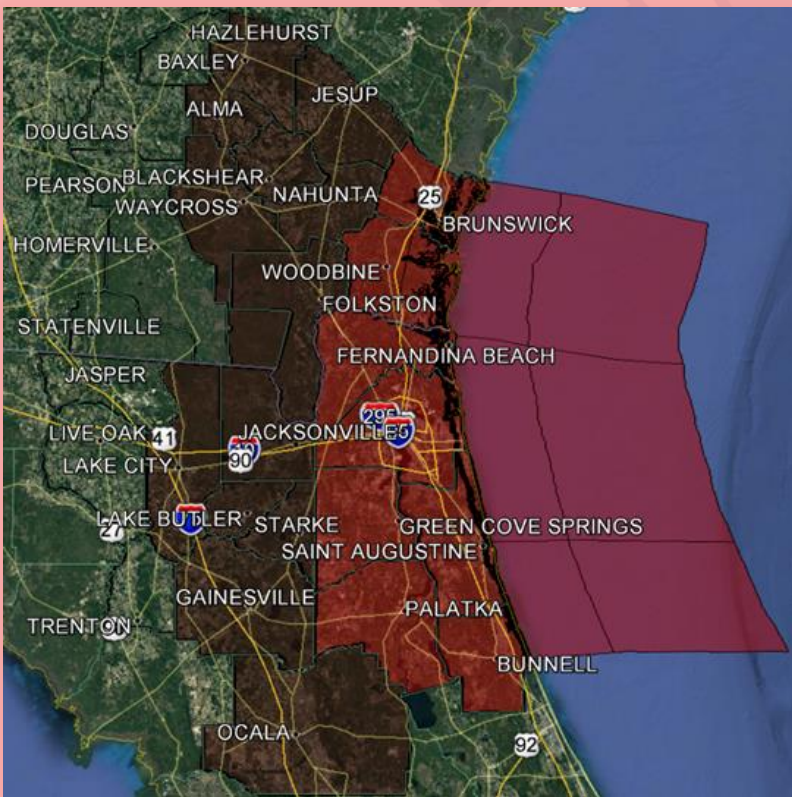
The storm poses an imminent threat of tropical storm and/or hurricane conditions to SOME PORTION of the Warning area. Heed the advice of Local officials. Be careful about rumors, erroneous social media posts and unwarranted speculation.



Hurricane and Tropical Storm Warnings Wind Threat

WARNING!
A Hurricane Warning means hurricane conditions can be expected in some portion of the warned area within the next 36 hours.

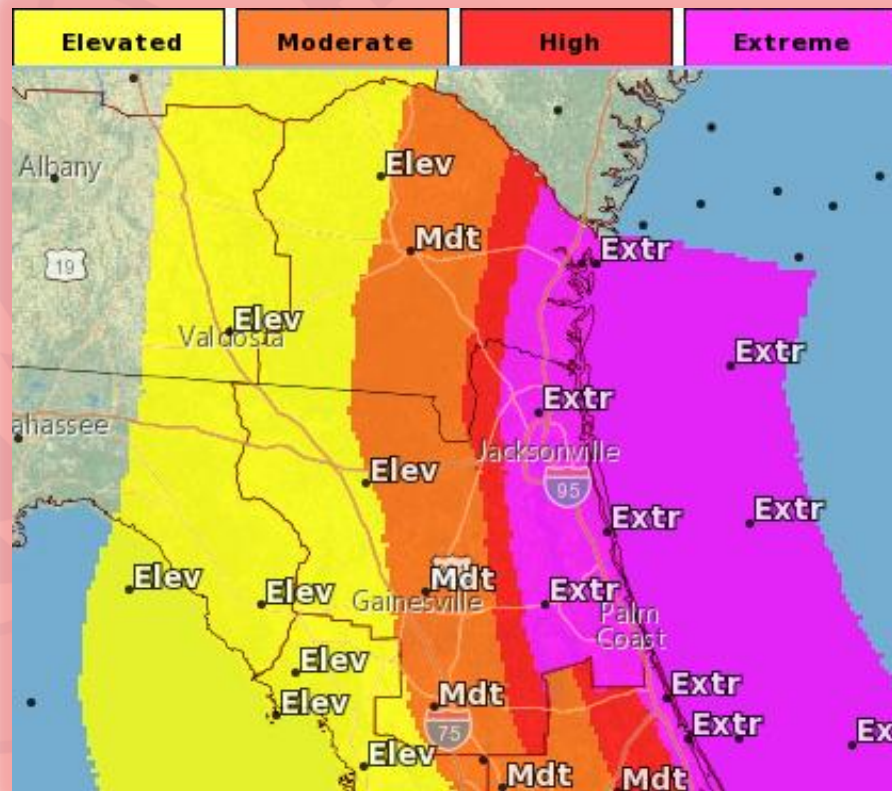
Warnings



 Tropical Storm Warning

 Hurricane Warning

Wind Threat





Peak Winds Midnight to 6 AM



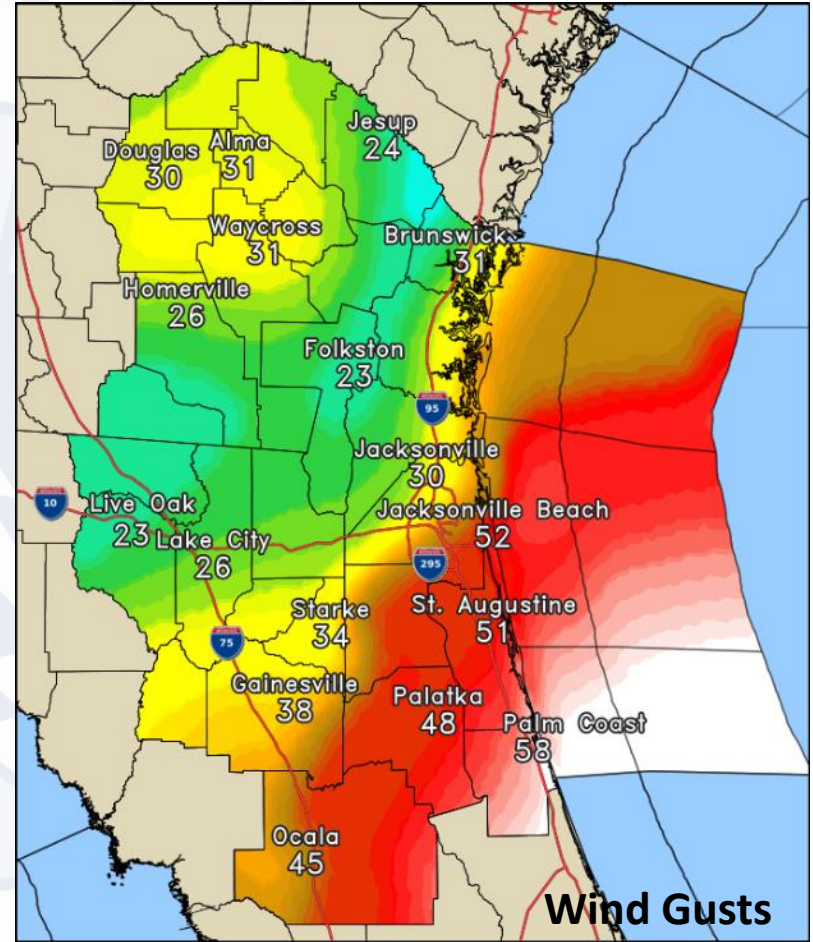
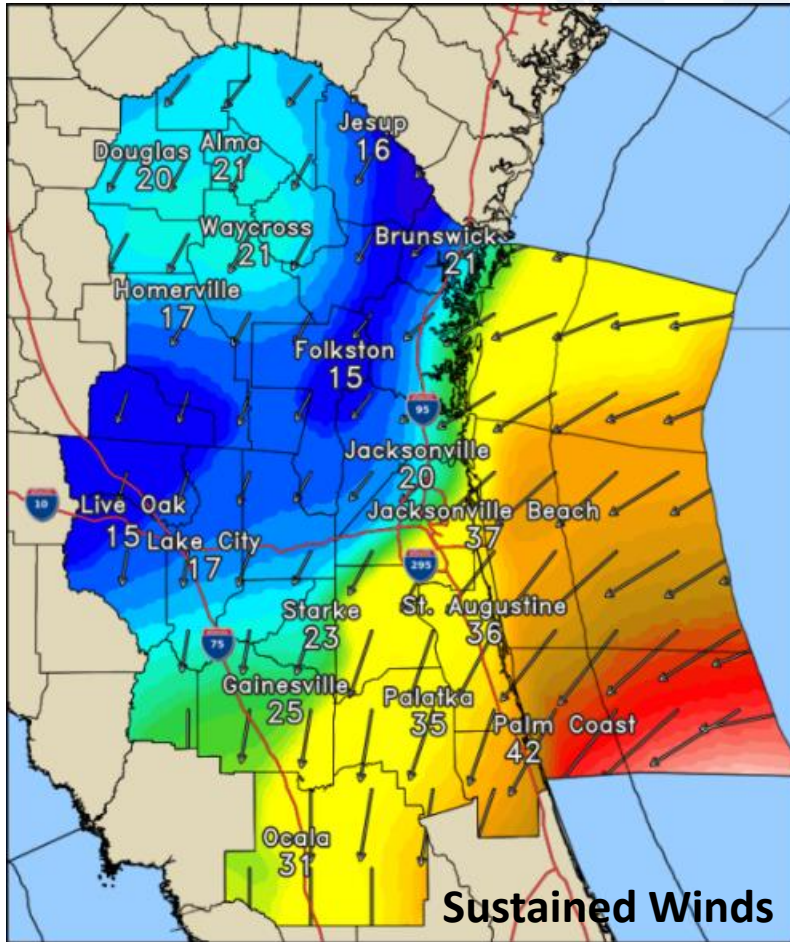
Location	Speed	Time/Date	Lat/Lon
Flagler County EOC	61 MPH	0228 AM 10/07	
Marineland	53 MPH	0231 AM 10/07	29.67N/81.21W
Flagler Beach	51 MPH	0516 AM 10/07	
Flagler Palm Coast HS	50 MPH	0432 AM 10/07	
1 NNE Jacksonville Beach	49 MPH	0530 AM 10/07	30.29N/81.39W
St Augustine Airport	49 MPH	0551 AM 10/07	29.96N/81.34W
1 NNE Saint Augustine Beach	47 MPH	0500 AM 10/07	29.86N/81.26W
Crescent Beach	47 MPH	0545 AM 10/07	29.72N/81.23W
2 N Mayport	44 MPH	0133 AM 10/07	30.42N/81.41W
1 E Fort Caroline	44 MPH	0218 AM 10/07	30.39N/81.48W
Mayport Naval Station	43 MPH	0552 AM 10/07	30.40N/81.43W
1 NW Saint Augustine	42 MPH	0239 AM 10/07	29.92N/81.33W
Craig Municipal Airport	40 MPH	0534 AM 10/07	30.34N/81.51W
Jacksonville Nas	38 MPH	0524 AM 10/07	30.23N/81.68W
Palm Coast	38 MPH	0525 AM 10/07	29.57N/81.21W
2 NNE Bakerstown	36 MPH	0532 AM 10/07	29.39N/81.47W
Fernandina Beach Municipal A	35 MPH	1215 AM 10/07	30.61N/81.46W
2 WNW Silver Springs Shores	35 MPH	0347 AM 10/07	29.12N/82.05W
Jacksonville Intl Airport	35 MPH	0203 AM 10/07	30.48N/81.70W
5 SSW Espanola	35 MPH	0453 AM 10/07	29.43N/81.35W
1 W Arlington	34 MPH	1210 AM 10/07	30.34N/81.63W

Winds will continue to increase this morning

The storm poses an imminent threat of tropical storm and/or hurricane conditions to SOME PORTION of the Warning area. Heed the advice of Local officials. Be careful about rumors, erroneous social media posts and unwarranted speculation.



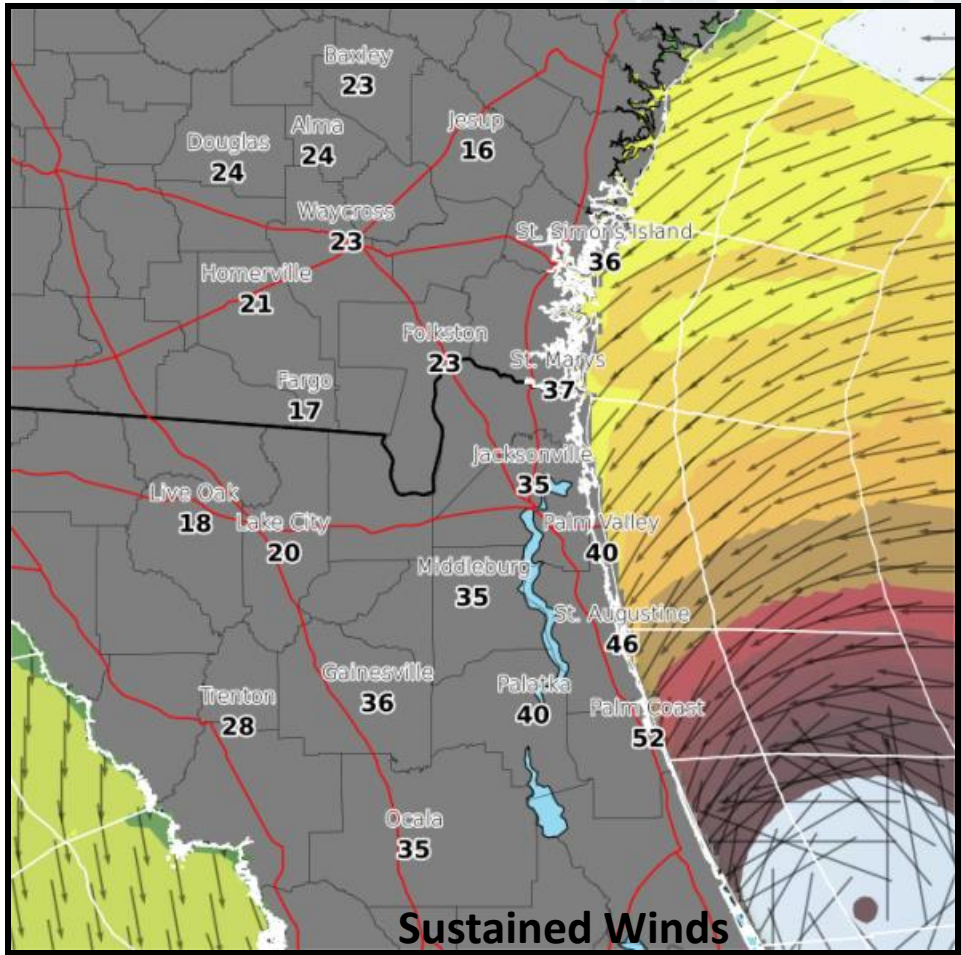
Today 8 a.m. Surface Winds MPH (For Timing Not Peak Winds)



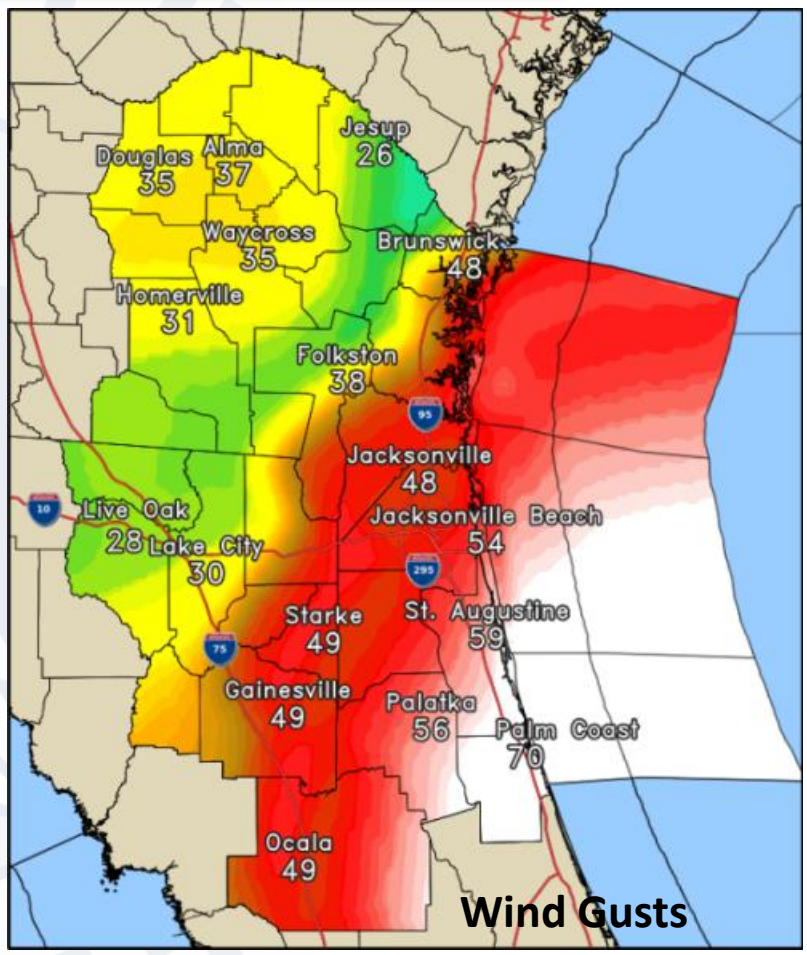
The storm poses an imminent threat of tropical storm and/or hurricane conditions to **SOME PORTION** of the Warning area. Heed the advice of Local officials. Be careful about rumors, erroneous social media posts and unwarranted speculation.



Today 11 a.m. Surface Winds MPH (For Timing Not Peak Winds)



Sustained Winds



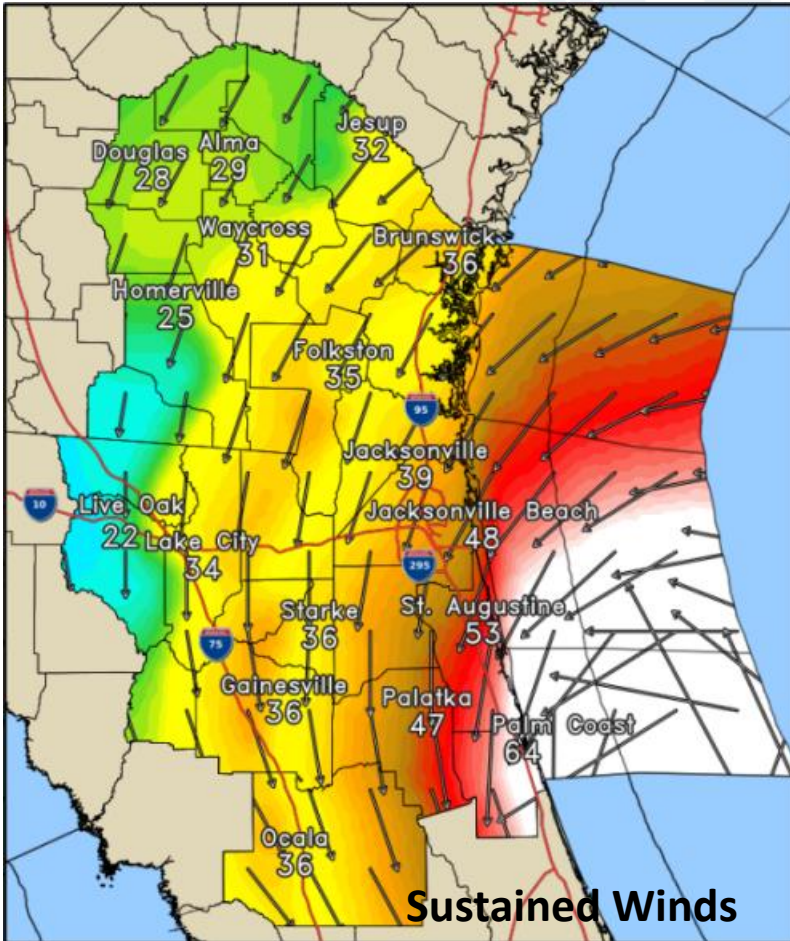
Wind Gusts

The storm poses an imminent threat of tropical storm and/or hurricane conditions to **SOME PORTION** of the Warning area. Heed the advice of Local officials. Be careful about rumors, erroneous social media posts and unwarranted speculation.

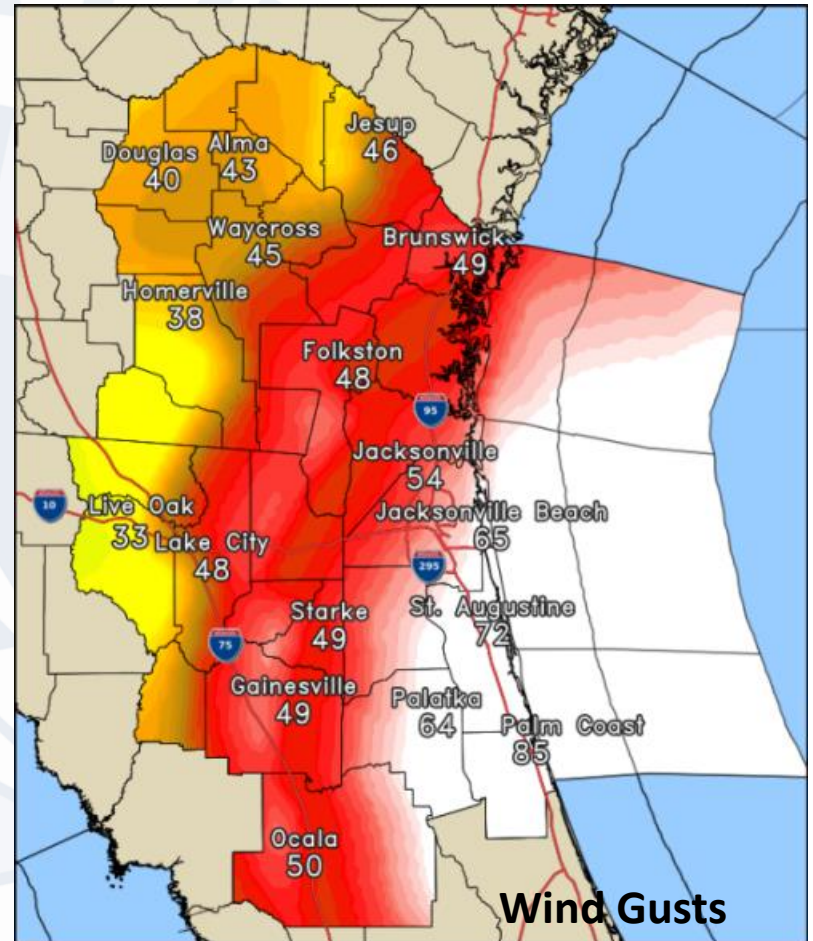




Today 2 p.m. Surface Winds MPH (For Timing Not Peak Winds)



Sustained Winds

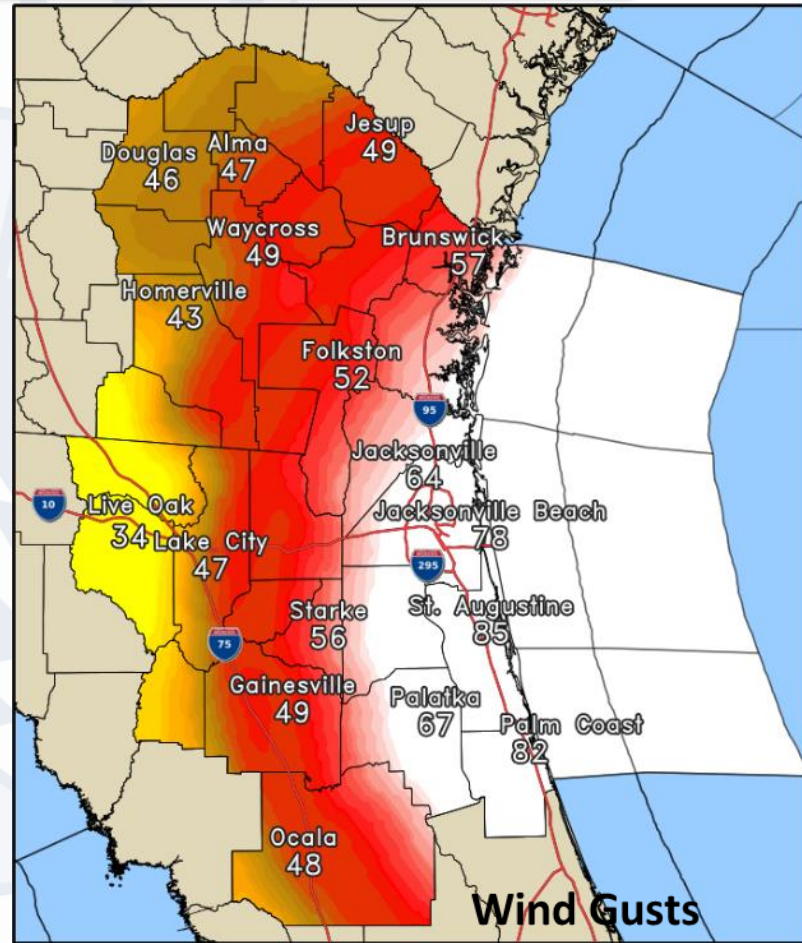
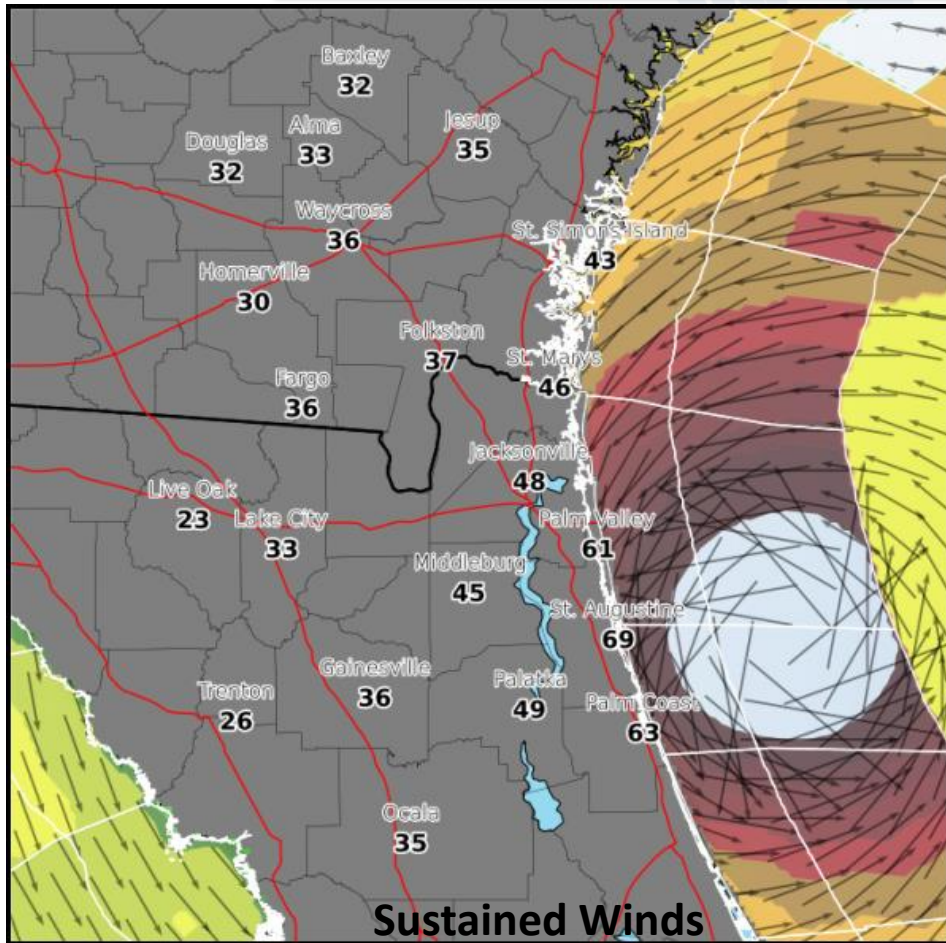


Wind Gusts

The storm poses an imminent threat of tropical storm and/or hurricane conditions to **SOME PORTION** of the Warning area. Heed the advice of Local officials. Be careful about rumors, erroneous social media posts and unwarranted speculation.



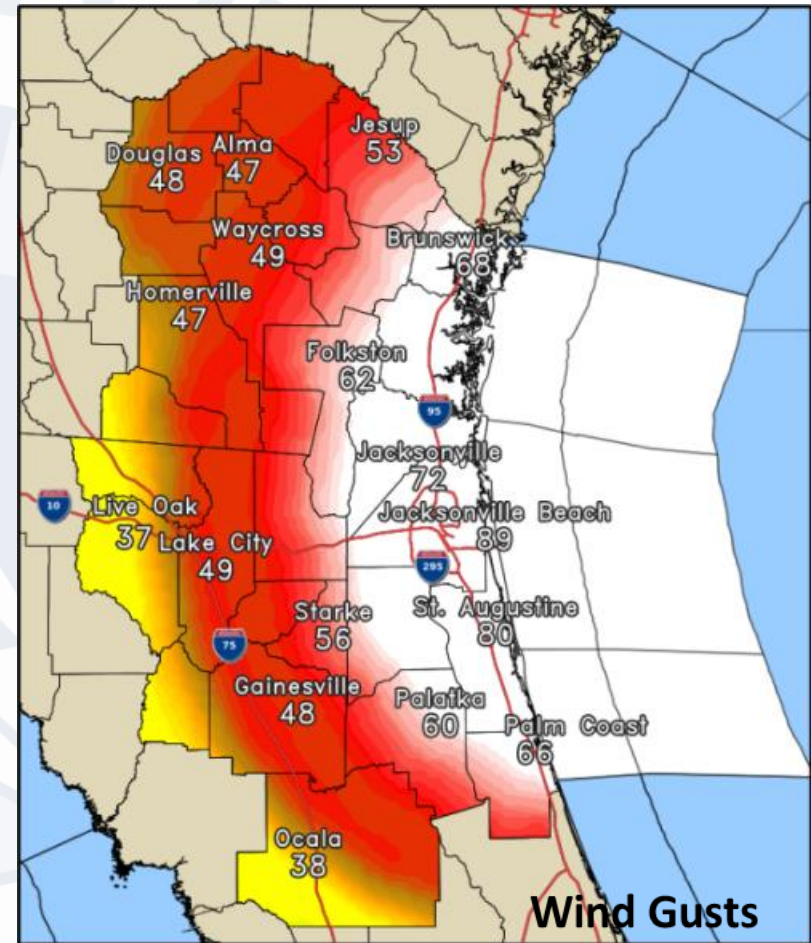
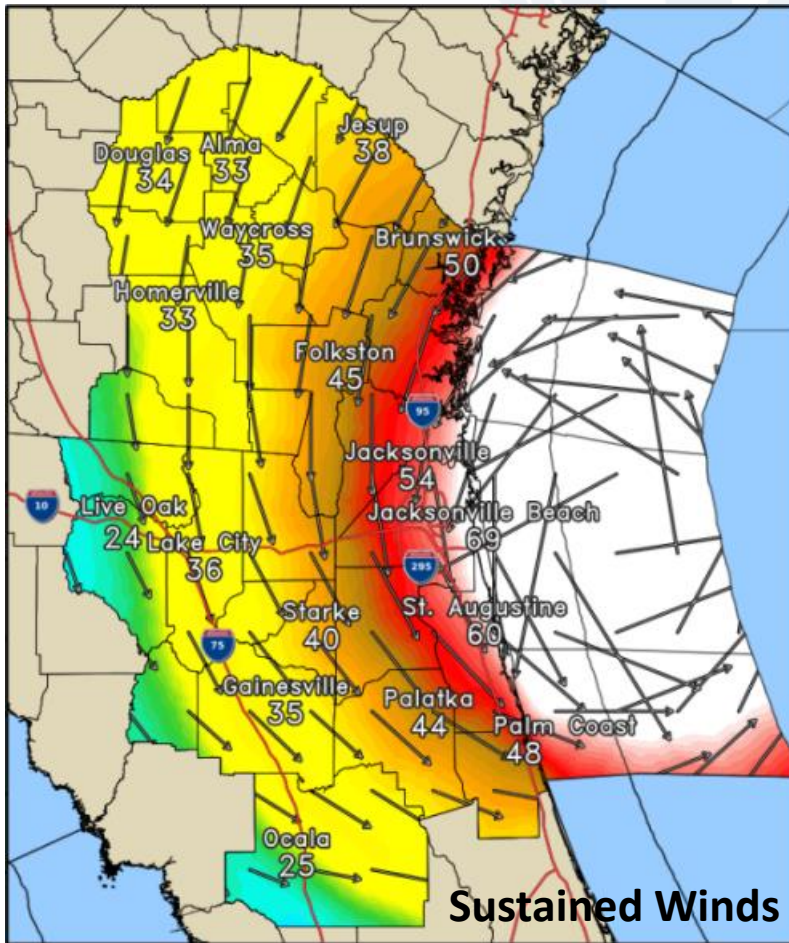
Today 5 p.m. Surface Winds MPH (For Timing Not Peak Winds)



The storm poses an imminent threat of tropical storm and/or hurricane conditions to **SOME PORTION** of the Warning area. Heed the advice of Local officials. Be careful about rumors, erroneous social media posts and unwarranted speculation.



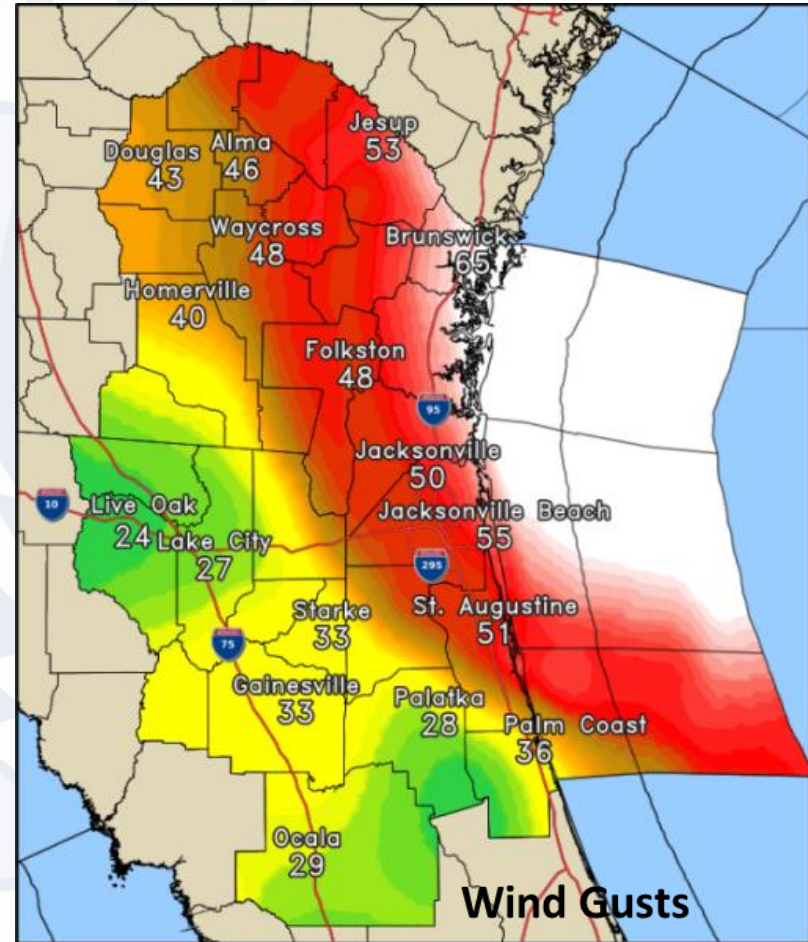
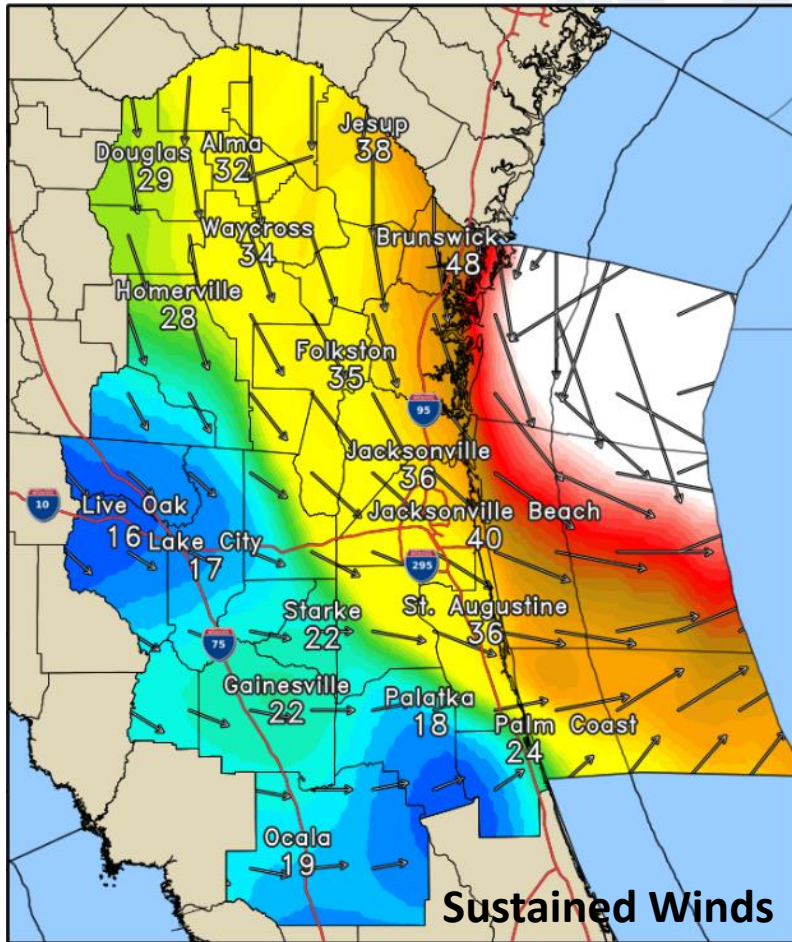
Today 8 p.m. Surface Winds MPH (For Timing Not Peak Winds)



The storm poses an imminent threat of tropical storm and/or hurricane conditions to **SOME PORTION** of the Warning area. Heed the advice of Local officials. Be careful about rumors, erroneous social media posts and unwarranted speculation.



Saturday 2 a.m. Surface Winds MPH (For Timing Not Peak Winds)

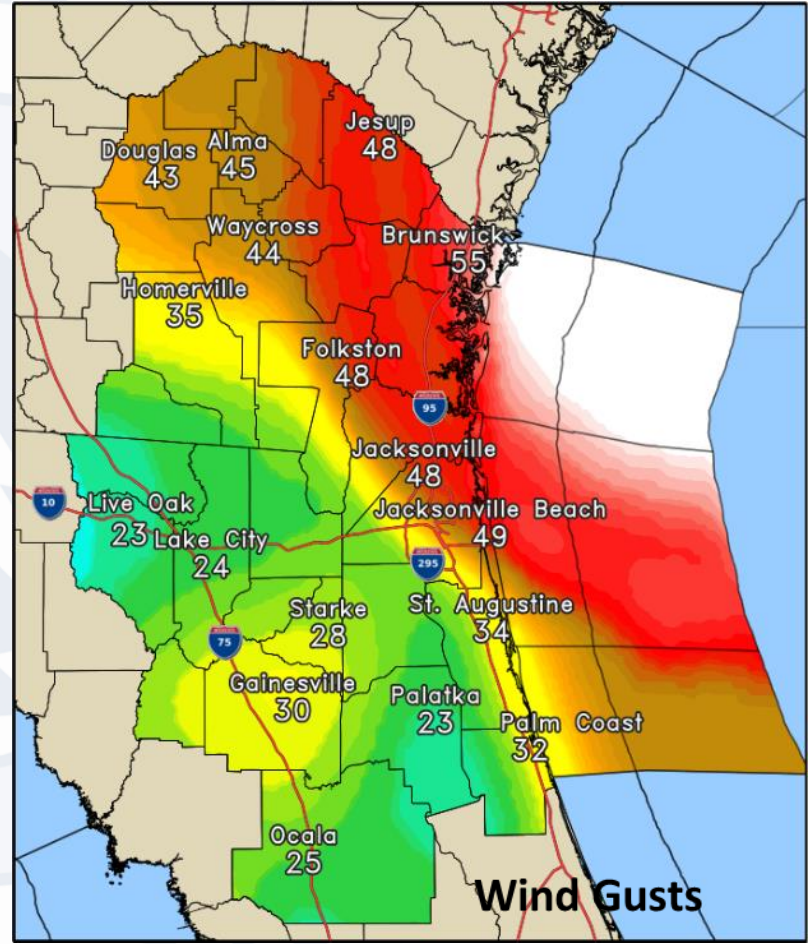
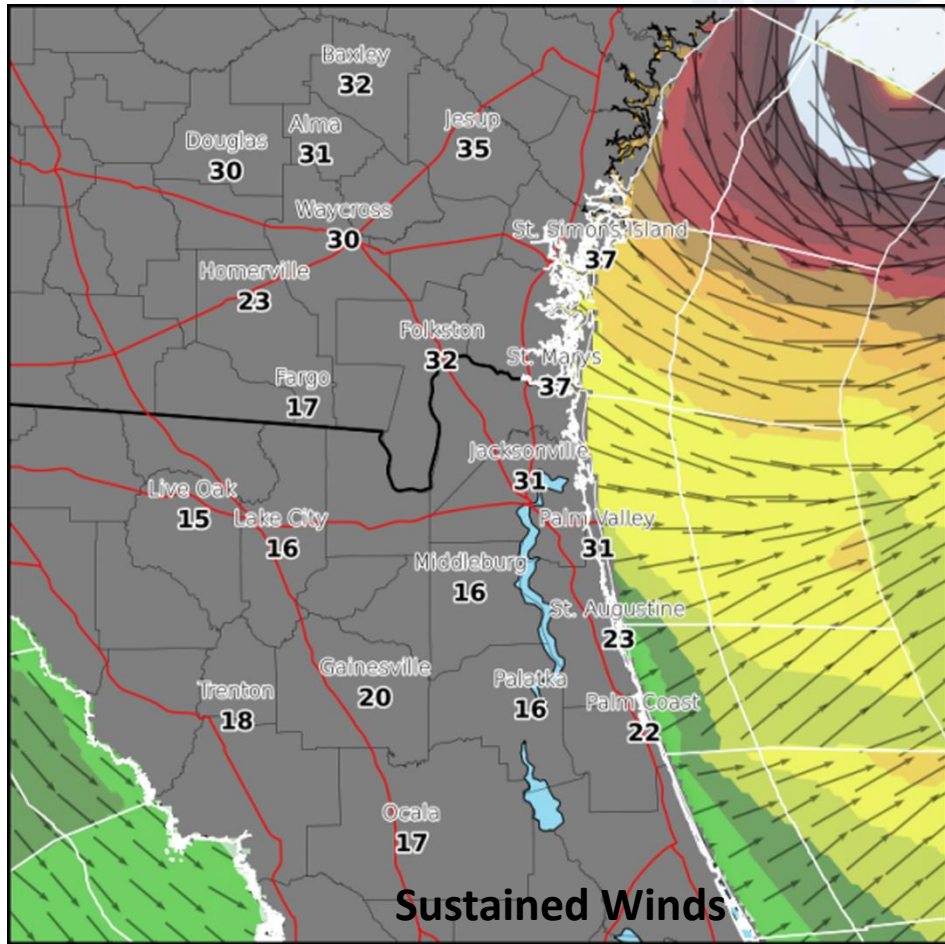


The storm poses an imminent threat of tropical storm and/or hurricane conditions to SOME PORTION of the Warning area. Heed the advice of Local officials. Be careful about rumors, erroneous social media posts and unwarranted speculation.



Saturday 5 a.m. Surface Winds MPH (For Timing Not Peak Winds)

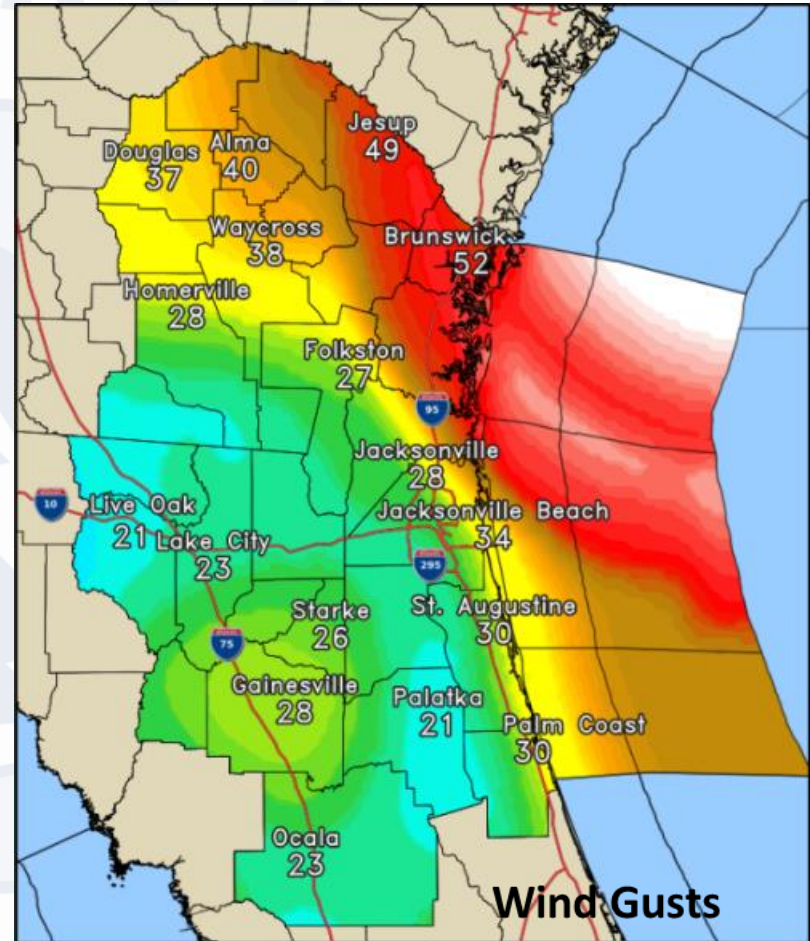
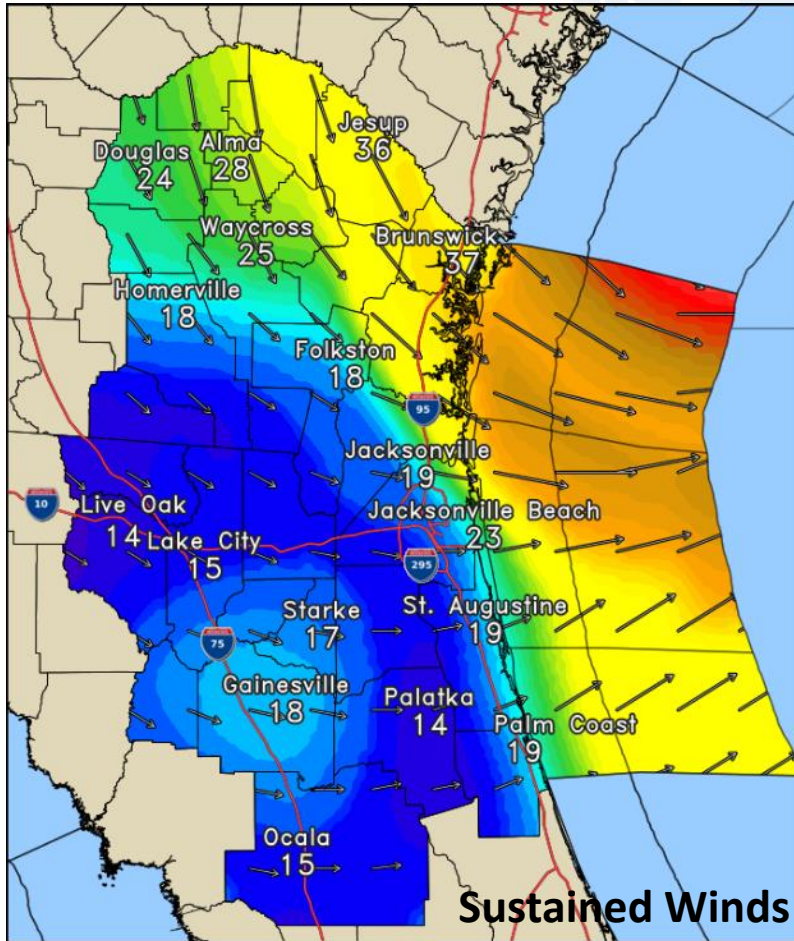
WARNING!
A Hurricane Warning means hurricane conditions can be expected in some portion of the warned area within the next 36 hours.



The storm poses an imminent threat of tropical storm and/or hurricane conditions to **SOME PORTION** of the Warning area. Heed the advice of Local officials. Be careful about rumors, erroneous social media posts and unwarranted speculation.



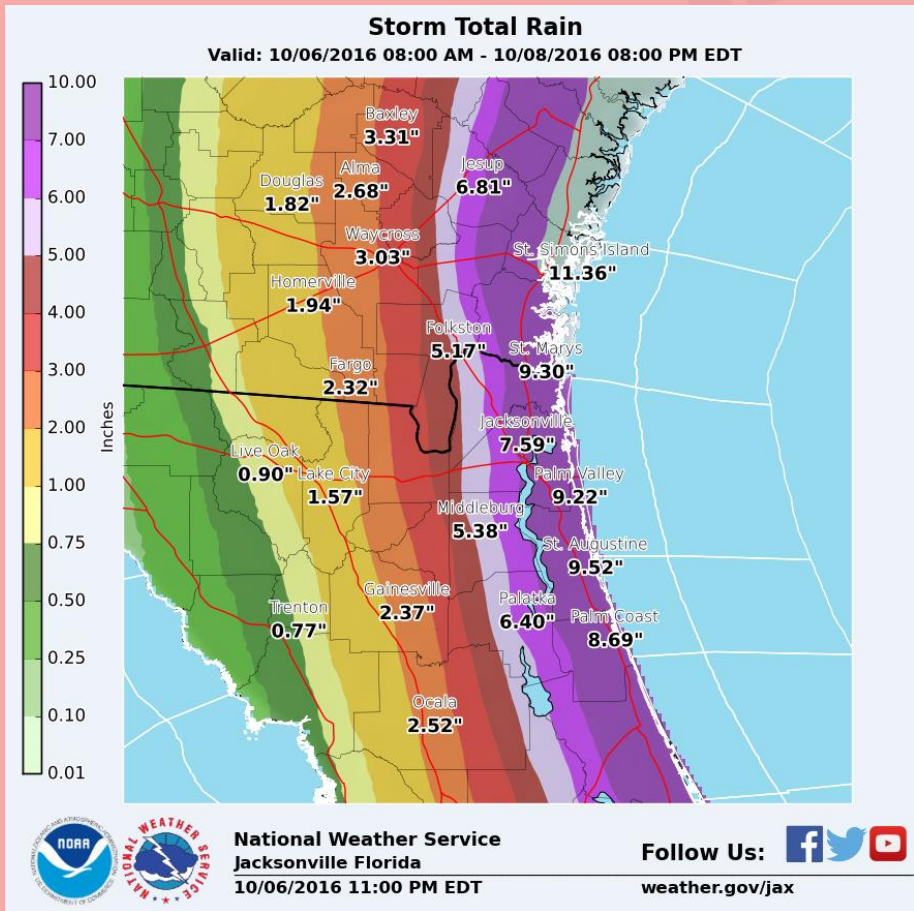
Saturday 8 a.m. Surface Winds MPH (For Timing Not Peak Winds)



The storm poses an imminent threat of tropical storm and/or hurricane conditions to SOME PORTION of the Warning area. Heed the advice of Local officials. Be careful about rumors, erroneous social media posts and unwarranted speculation.



Heavy Coastal Rainfall Likely

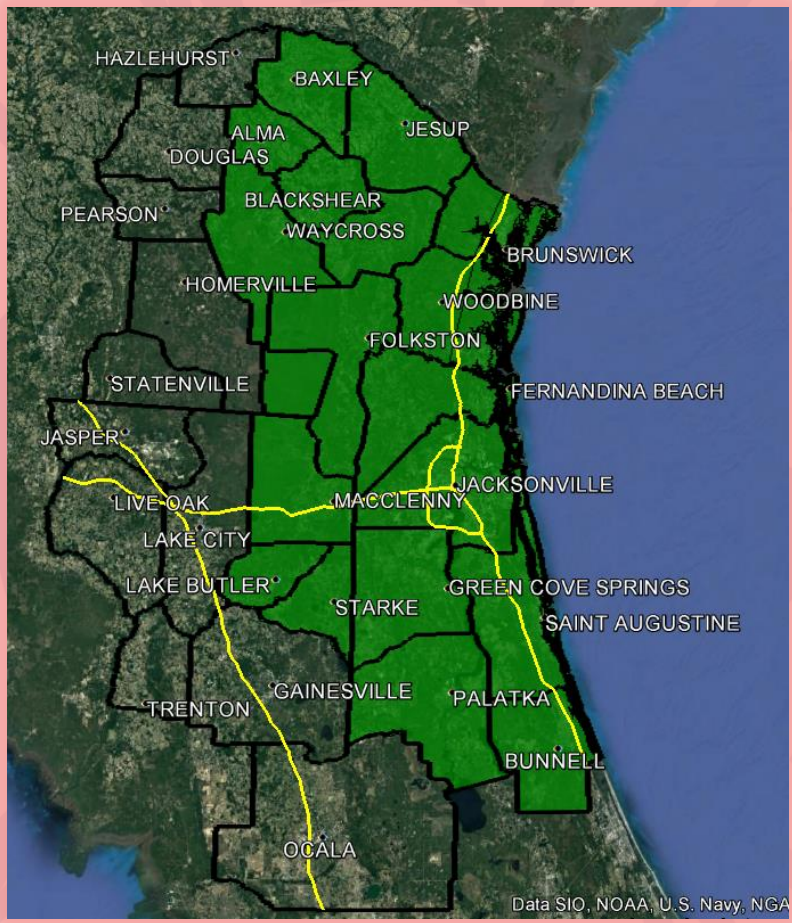


- Localized Pockets of very heavy rain are possible through the duration of the storm event.
- Today through late Friday night, intervals of squally rain bands will come ashore
- Some areas may repeatedly get heavy rainfall, causing localized to large swaths of flooding, particularly over the coastal counties.
- Heavy rainfall combined with storm tide may exasperate standing water in some coastal areas.

The storm poses an imminent threat of tropical storm and/or hurricane conditions to SOME PORTION of the Warning area. Heed the advice of Local officials. Be careful about rumors, erroneous social media posts and unwarranted speculation.



Flood Watch



The storm poses an imminent threat of tropical storm and/or hurricane conditions to **SOME PORTION** of the Warning area. Heed the advice of Local officials. Be careful about rumors, erroneous social media posts and unwarranted speculation.



Major Hurricane Matthew Talking Points



- On the current official forecast track, the closest approach of MAJOR Hurricane Matthew to the local coast will be near Palm Coast around 2 pm today with Hurricane Matthew being 37 miles off the coast. Generally Hurricane Matthew will parallel the coast at 40 to 60 miles offshore today and tonight.
- Potential Impacts:
 - Strong tropical storm to category 1 hurricane winds are expected along the coast!
 - *life threatening storm surge with damaging 10 to 15 foot waves on top of it are still possible especially along the immediate beaches and portions of the Intracoastal waterway.*
 - Significant, but not devastating, damage to coastal infrastructure is still possible from storm surge.
 - Tides in the creeks and rivers coming off the St Johns River in Duval, Clay, Putnam, Flagler and Putnam could be 3 to 4 feet Above Ground Level during the peak storm winds. The greatest threat will be for creeks and streams oriented to the south and east as winds will blow water in those directions.
 - Tropical Storm or greater wind conditions could occur for 15-20 hours.
 - HEED the advice of local officials and Emergency Management.
- Closely monitor the latest forecast from NHC/NWS Jacksonville for updates. The next scheduled web packet briefing is scheduled for Noon today.

The storm poses an imminent threat of tropical storm and/or hurricane conditions to SOME PORTION of the Warning area. Heed the advice of Local officials. Be careful about rumors, erroneous social media posts and unwarranted speculation.