



Weather Impact Overview – Tropical Storm Nicole

Northeast Florida & Southeast Georgia



Life-Threatening Storm Surge Today

- Storm Surge Warnings for local Atlantic Coast, ICWW & St. Johns River Basin



Tropical Storm Force Gusts through Tonight

- Tropical Storm Warnings SE GA, NE FL & Adjacent Atlantic Waters



Major Coastal & Marine Impacts

- Moderate to Major Tidal Flooding around High Tide Today
- Destructive surf, major beach erosion, and deadly rip currents at all local beaches



Tornado Threat Today – Locations East of I-95 Most Vulnerable



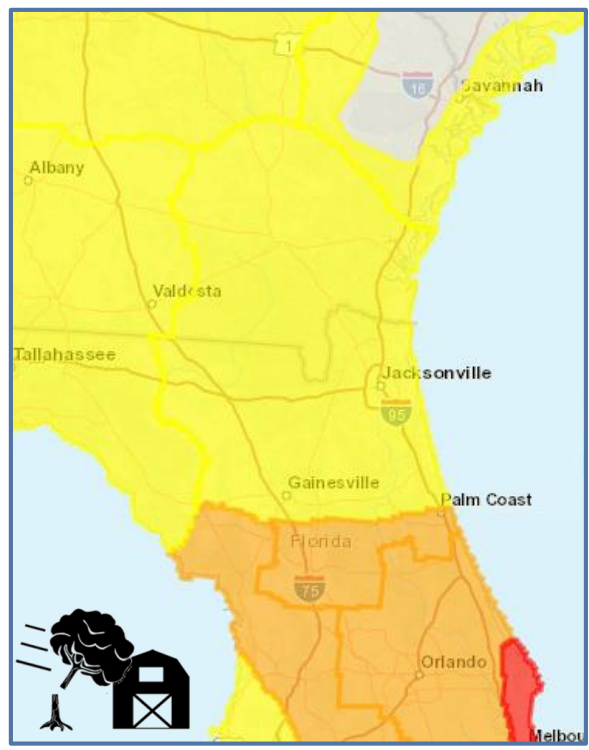
Localized Flooding Rain Threat East of HWY 301 NE FL



Tropical Storm Nicole Potential Impacts Overview

Impacts through Friday morning

Wind



Tropical Storm Warnings
for NE FL & SE GA
Wind Gust Potential Legend:
Orange: 58-73 mph
Yellow: 39-57 mph

Storm Surge



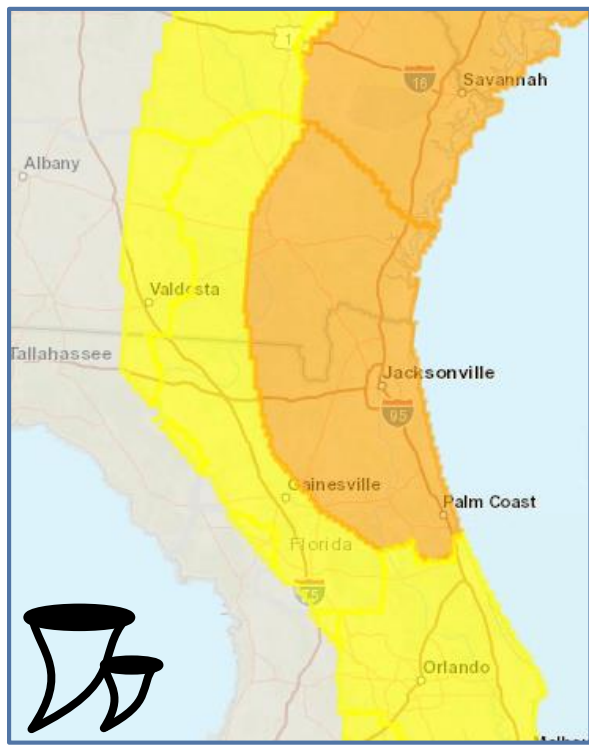
Storm Surge Warning
for local Atlantic coast, ICWW &
St. Johns River
Storm Surge Inundation: 3-5 ft

Flooding Rain



Localized Flash Flooding
Possible
Streams & rivers may overflow
their banks

Tornado



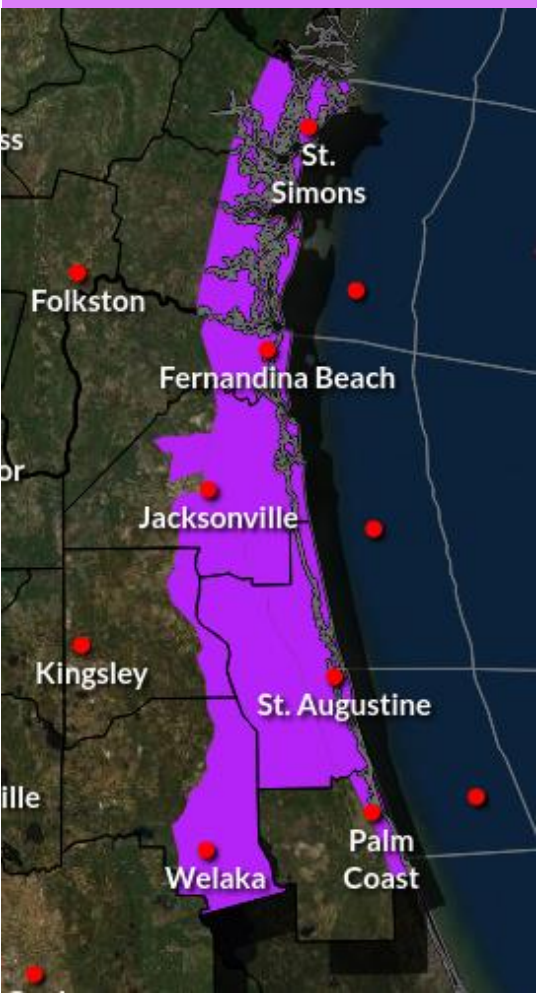
Several Tornadoes Possible
Main tornado threat this morning
for NE FL through midday SE GA
– especially east of Interstate 95



Storm Surge Threat, Marine & Beach Hazards

Tropical Storm Nicole

Storm Surge Warning



Potential for Life-Threatening Storm Surge

Expected Storm Surge Inundation:

- Immediate Coast, ICWW & St. Johns River from Mayport to Jacksonville: 3-5 ft
- St. Johns River Basin, south of Jacksonville: 2-4 ft
- The Westbank of the St. Johns River prone to higher surge today
- St. Johns River Flooding continues Friday due to trapped tides
- Southerly winds Friday will push higher water into Riverside/JAX



Prepare for the Following Coastal & Marine Threats:

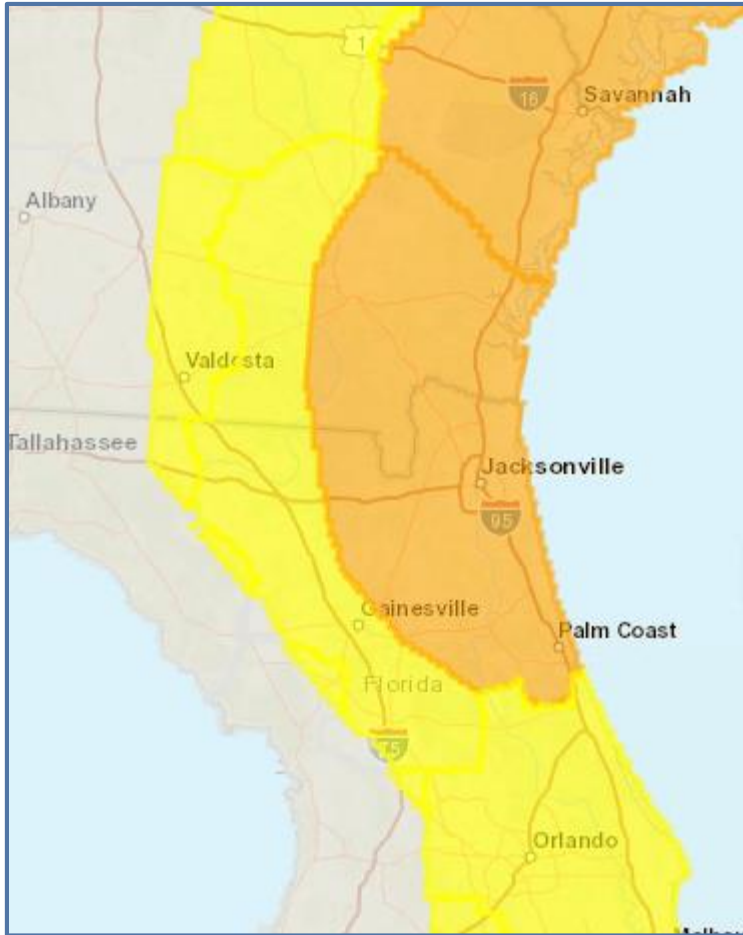
- High Risk of Deadly Rip Currents
- Destructive Beach Erosion
- Dangerous Boating Conditions





Tornado Threat Potential

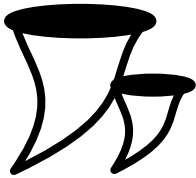
Tropical Storm Nicole



Tornado Threat
Potential for an outbreak of tornadoes
Potential for many tornadoes
Potential for several tornadoes
Potential for a few tornadoes
Tornadoes not expected

Potential for Several Tornadoes

The tornado threat increases through daybreak for coastal NE FL, then expands northward up the SE GA Atlantic coast through midday and inland toward the Highway 301 corridor.



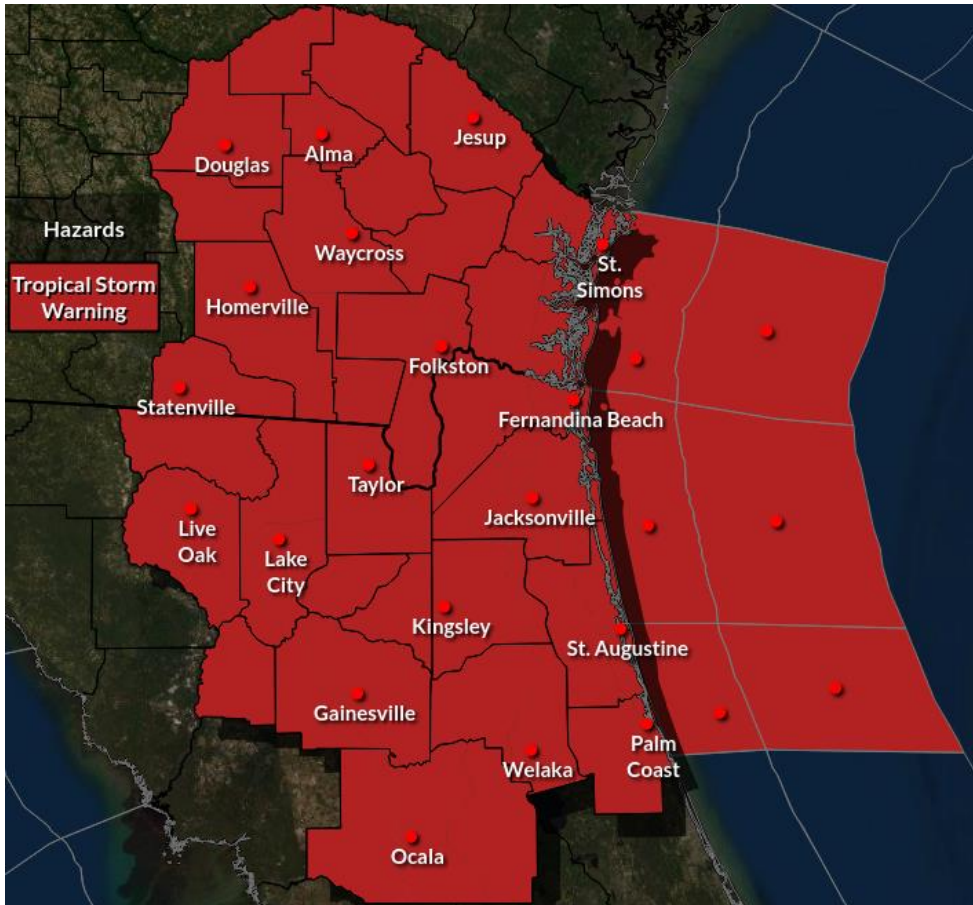
Consider the following for potential tornado impacts:

- Several large fallen trees & tree limbs
- Power outages
- Damage to structures and mobile homes possible
- Ensure multiple ways to receive warnings – including at night and with potential power loss
- Identify a safe room in your shelter



Wind Threat Potential

Tropical Storm Nicole



Tropical Storm Warnings



Tropical Storm force winds will continue to increase from south to north along the coast, St. Johns River Basin, and over inland bodies of water through today

Tropical Storm force wind gusts are possible across all areas through Friday morning.



Prepare for the following wind impacts:

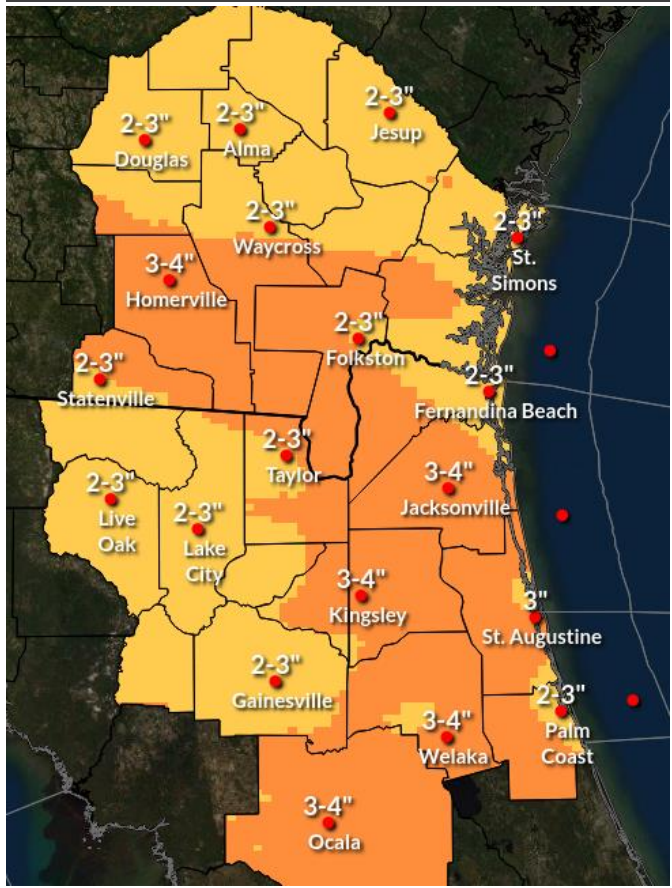
- Several large fallen trees & tree limbs
- Power outages
- Damage to structures & mobile homes possible
- Some roads impassable due to fallen debris



Flooding Rainfall Potential

Tropical Storm Nicole

Additional Rainfall Today through Friday



Flood Watch Area



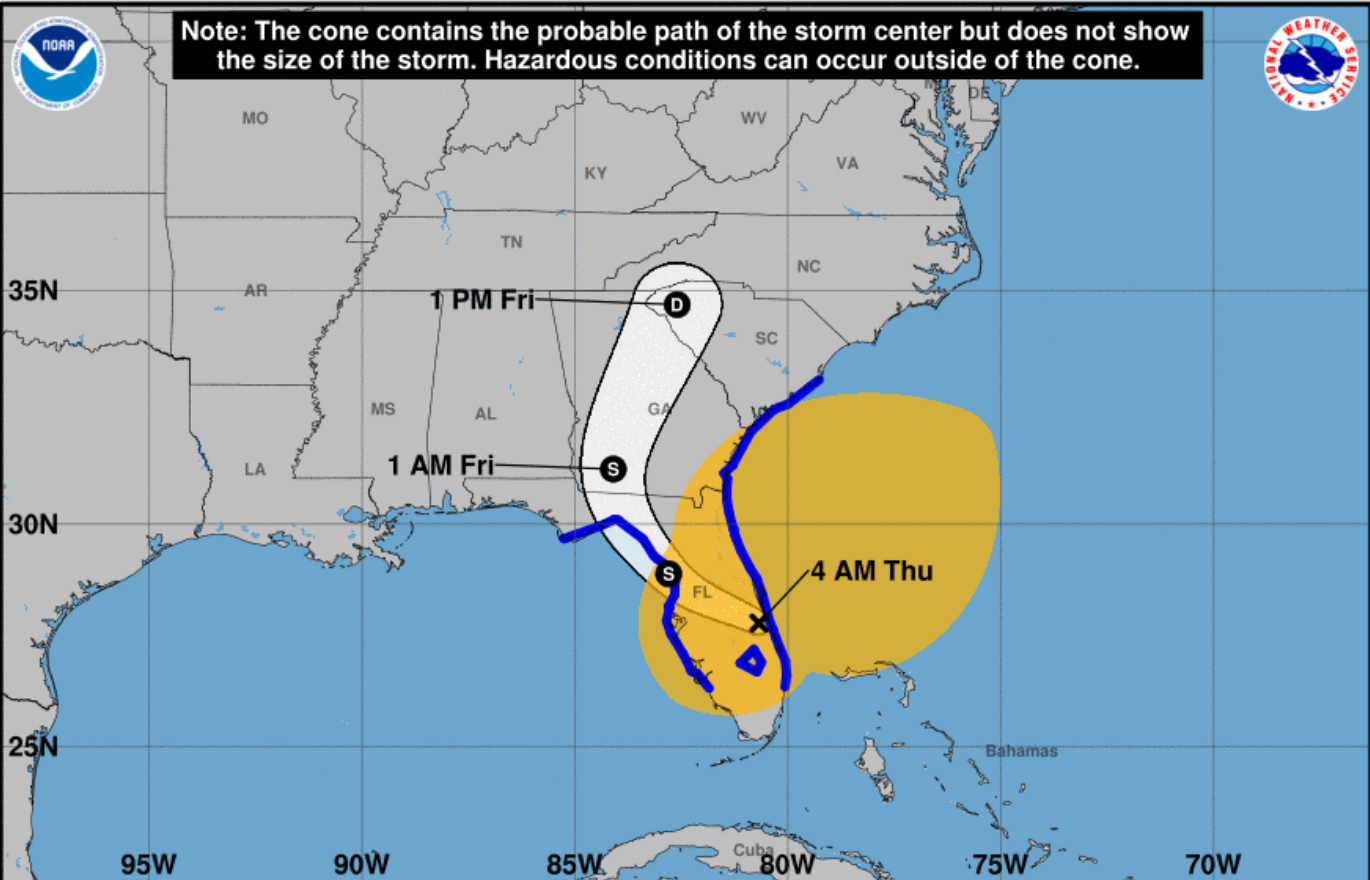
- Localized flash flooding possible today through Friday across portions of NE FL
- Most vulnerable flash flood potential areas include coastal NE FL & within the St. Johns River Basin, especially around high tide
- Additional Rainfall 2-4 inches through Friday
 - Locally higher amounts possible especially along coast

Tropical Storm Nicole

Jacksonville, FL
Weather Forecast Office



Issued November 10, 2022 4:24 AM ET



Tropical Storm Nicole
Thursday November 10, 2022
4 AM EST Advisory 13
NWS National Hurricane Center

Current information: x
Center location 27.8 N 80.7 W
Maximum sustained wind 70 mph
Movement WNW at 14 mph

Forecast positions:
● Tropical Cyclone ○ Post/Potential TC
Sustained winds: D < 39 mph
S 39-73 mph H 74-110 mph M > 110 mph

Potential track area: Day 1-3 (solid line), Day 4-5 (dotted line)
Watches: Hurricane (pink), Trop Stm (yellow)
Warnings: Hurricane (red), Trop Stm (blue)
Current wind extent: Hurricane (brown), Trop Stm (yellow)

NE FL & SE GA Key Points



Nicole will track WNW across central FL today, then further weaken as it moves NNW across the FL peninsula & south GA through Fri



Significant impacts will focus along the Atlantic Coast & St. Johns River basin through tonight.

Potential Hazards



Several Tornadoes



Storm Surge, Extreme Beach Erosion, Deadly Rip Currents, High Seas



Tropical Storm Winds



Localized Flooding Rainfall Possible



Hunker Down Today