

Weather Impact Overview

Southeast Georgia & Northeast Florida



Tropical Storm Ian Potential Impacts:



**Hurricane Watches in Effect for the Coast of NE FL and SE GA,
Tropical Storm Watches and Warnings in Effect for much of NE FL
and SE GA**



Sustained Tropical Storm Force Winds, Gusts to Hurricane Force



**Storm Surge Warnings are in Effect Along the NE FL and SE GA
Coast, ICWW, and St. Johns River Basin**



Life-Threatening Storm Surge Expected



Flood Watch in effect for coastal NE FL and SE GA



Widespread Flooding Rainfall in Flagler and St. Johns will Lead to Extensive Flash
Flooding Potential



Dangerous Marine/Coastal Conditions expected



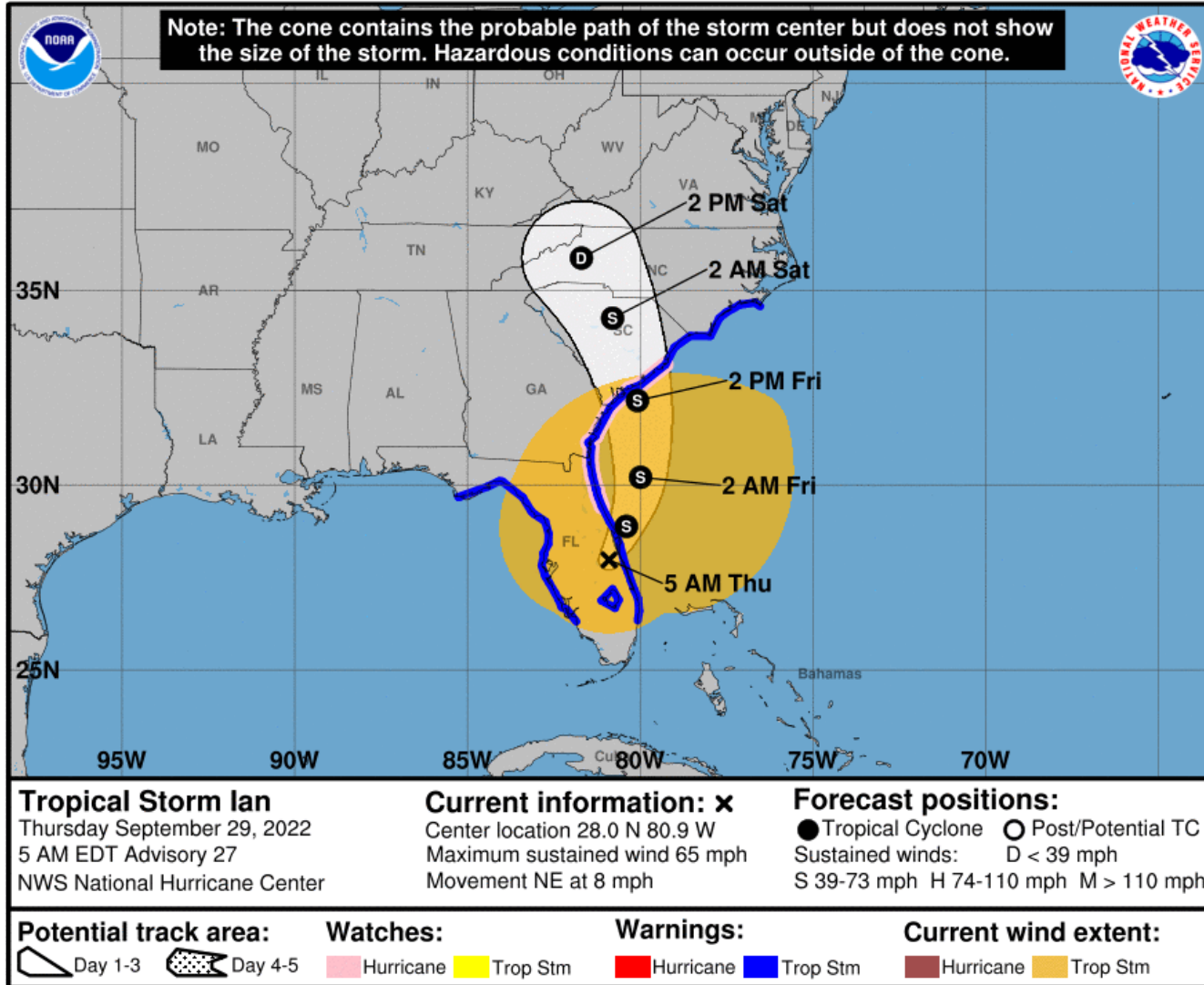
High risk of Rip currents, High Seas/surf, TS Winds, Hurricane Gusts



A Few Tornadoes possible for coastal NE FL

Tropical Storm Ian

Southeast Georgia & Northeast Florida



- ☞ Coastal & Marine Impacts Expected through Friday:
 - ☞ Storm Surge & Beach Erosion
 - ☞ Tropical Storm Force Winds with Potential for Hurricane Force Wind Gusts along the coast
 - ☞ Bands of heavy rainfall

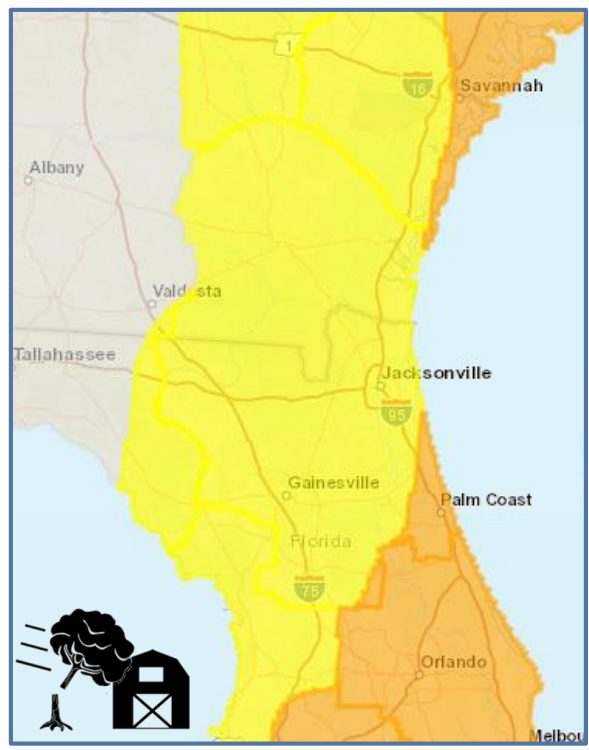
- ☞ Inland Potential Threats:
 - ☞ Moderate/Heavy Rainfall
 - ☞ Flooding
 - ☞ Isolated tornadoes, mainly along coast



Tropical Storm Ian Potential Impacts

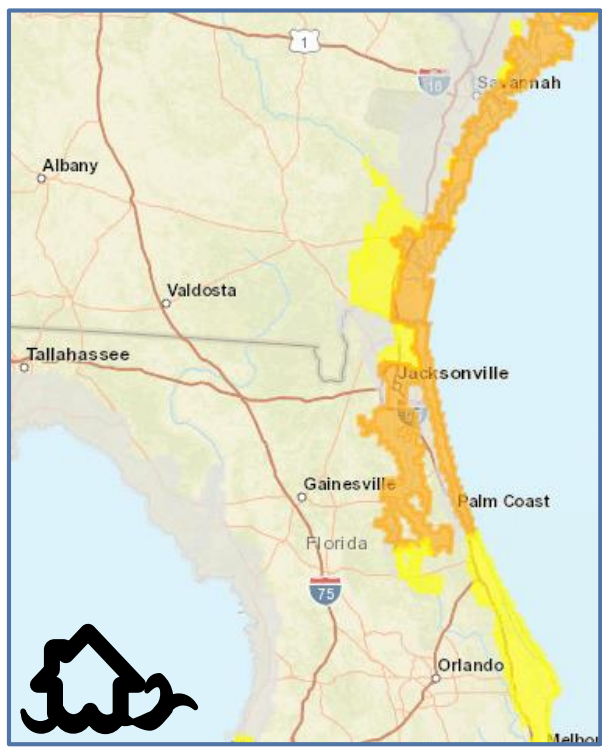
Thursday 5 AM Update

Wind



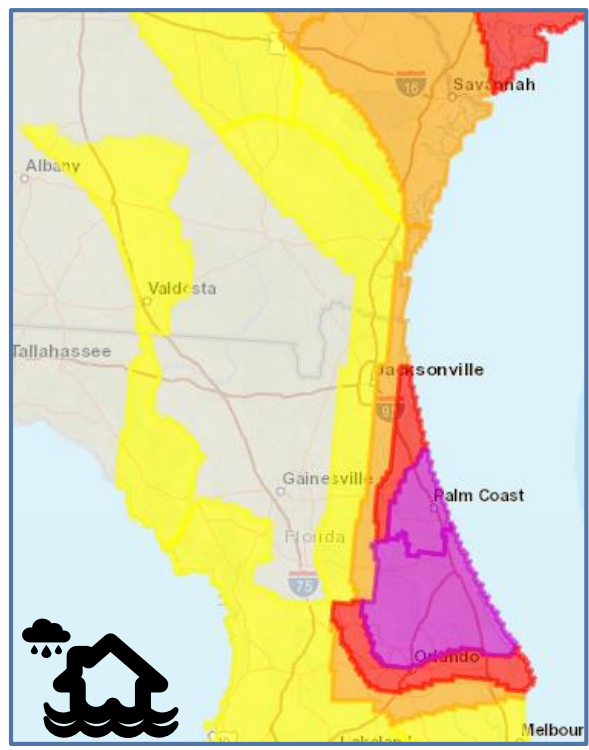
Tropical Storm Force winds with gusts to Hurricane Strength Possible along the NE FL coast. Numerous fallen trees, power outages and damage to structures and mobile homes.

Storm Surge



Life-threatening Storm Surge of 3-6 ft expected. Greatest threat: Coastal SE GA, NE FL coast, ICWW, St. Johns River

Flooding Rain



Extensive and potentially extreme Flash Flooding for Flagler and St. Johns. Continuous Moderate/Heavy Rainfall in Rainbands for Coastal SE GA & NE FL.

Tornado

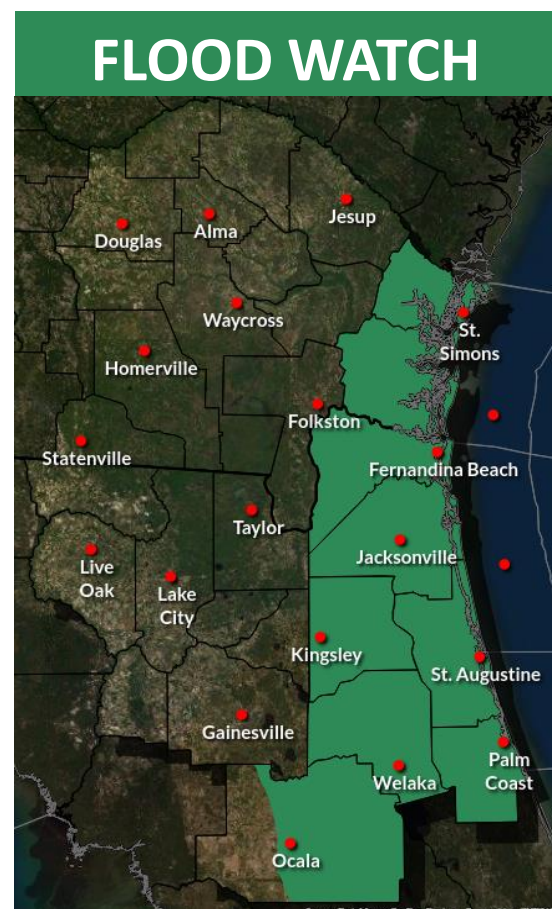
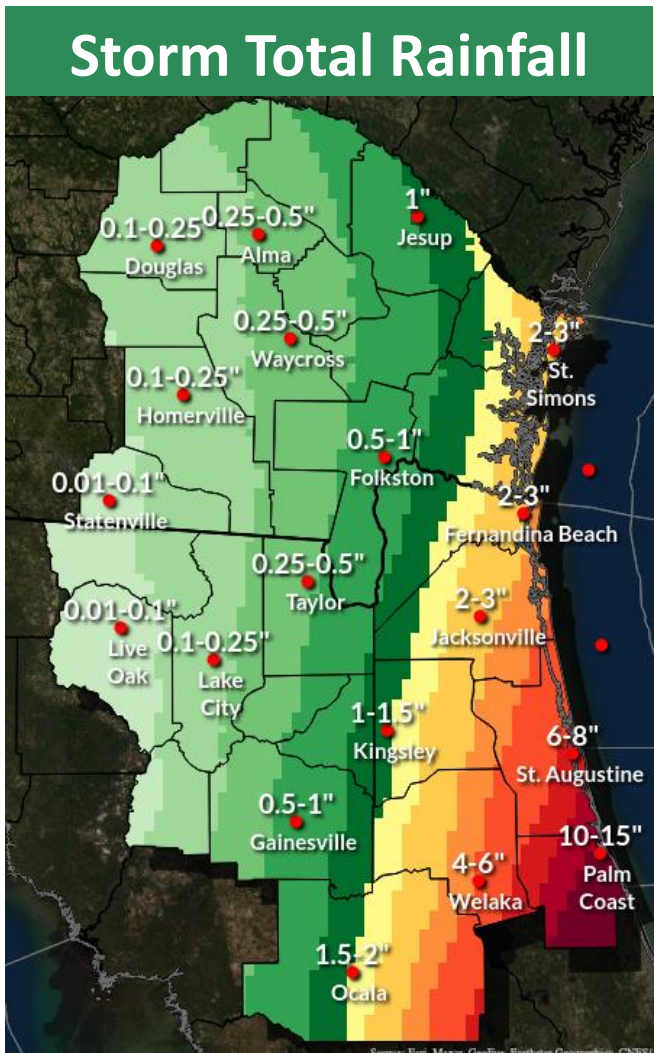


A Few Tornadoes Expected. Greatest threat: Coastal NE FL



Flooding Potential

Tropical Storm Ian



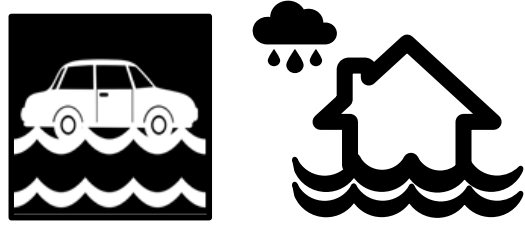
Torrential rainfall in rain bands continue to move up from the south through Friday leading to **extensive Flash Flooding over Flagler and St. Johns counties.**

Potential rainfall totals through Friday Night:

- Flagler County: **10-15 inches, localized 18 inches** possible
- Coastal NE FL and North-Central FL: **2 to 6 inches, local 8 inch** rainfall amounts possible
- Coastal SE GA: **2 to 4 inches**, locally higher amounts possible

Driving conditions could become hazardous with heavy rainfall and flooded roads

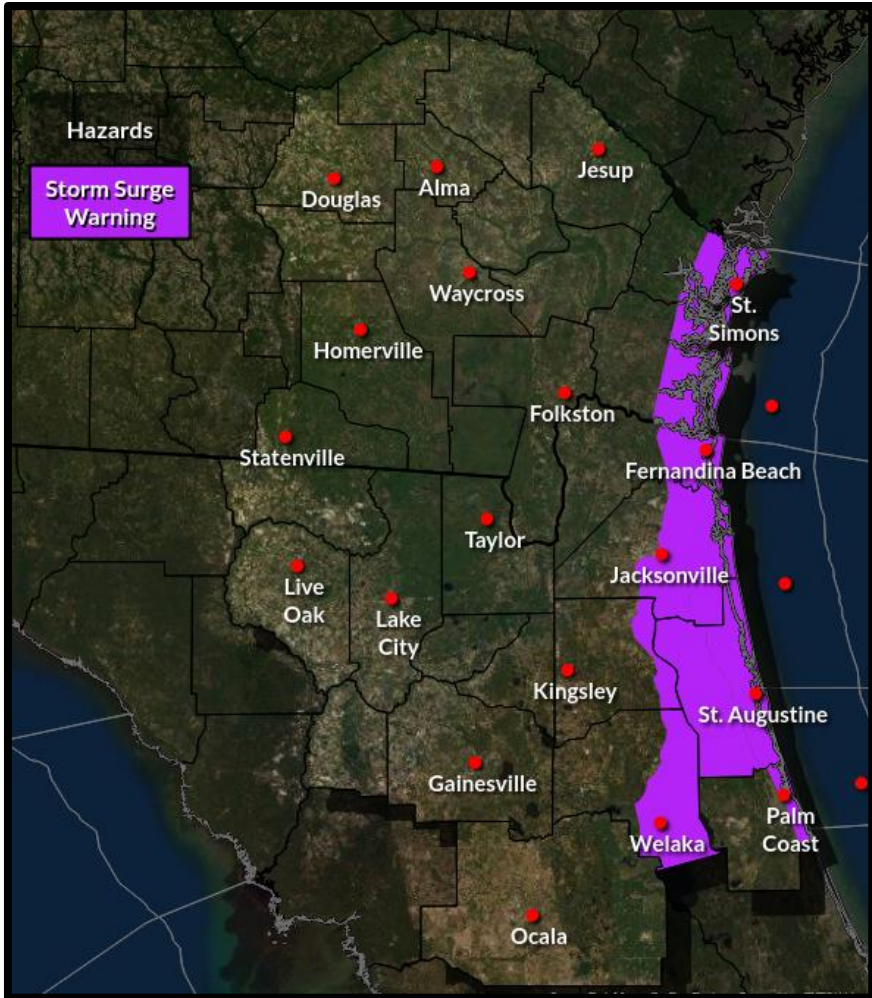
Flood waters can **enter numerous structures within multiple communities**, some structures becoming uninhabitable or washed away





Marine and Beach Hazards

Tropical Storm Ian



Storm Surge Warnings in effect for coastal SE GA and NE FL, ICWW, and St. Johns River



Life threatening storm surge flooding will be possible along the immediate coast into low-lying spots, ICWW and into the St. Johns River basin.

Along the Atlantic Coast and ICWW...

4-6 ft, Similar to Matthew



Along the St. Johns River and Estuaries...

3-5 ft, Similar to Irma

High risk of rip currents for NE FL and SE GA coasts



Dangerous Boating conditions with tropical storm force winds and hurricane force gusts over the Atlantic waters



Wind Potential

Tropical Storm Ian

Hurricane Watches along NE FL and SE GA Coastline

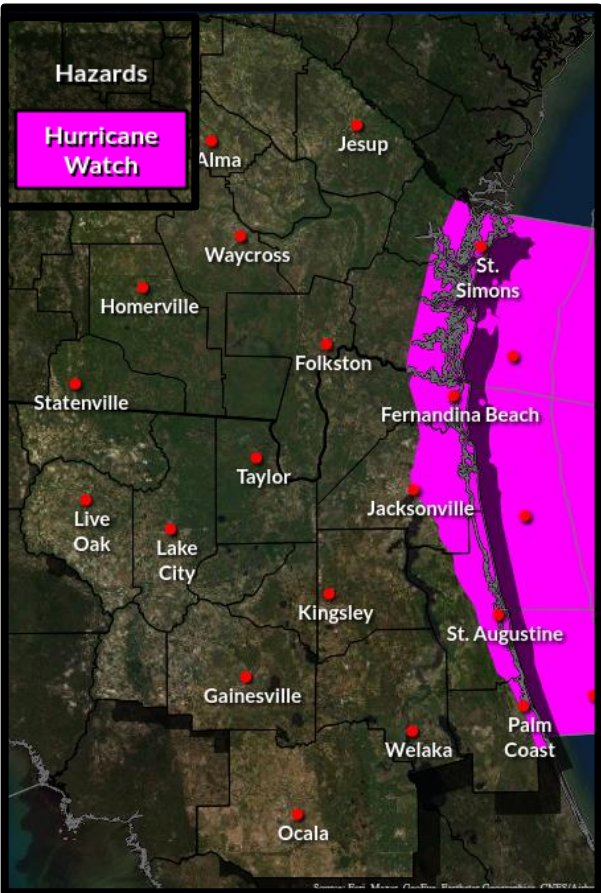
Tropical Storm Watches and Warnings in effect for much of NE FL and SE GA

Strong Tropical Storm force winds will affect Atlantic coast and portions of inland NE FL and SE GA.

Gusts to Hurricane strength possible along the Atlantic Coast.

Locally higher winds expected over St. Johns River basin, along the coast and along bridges

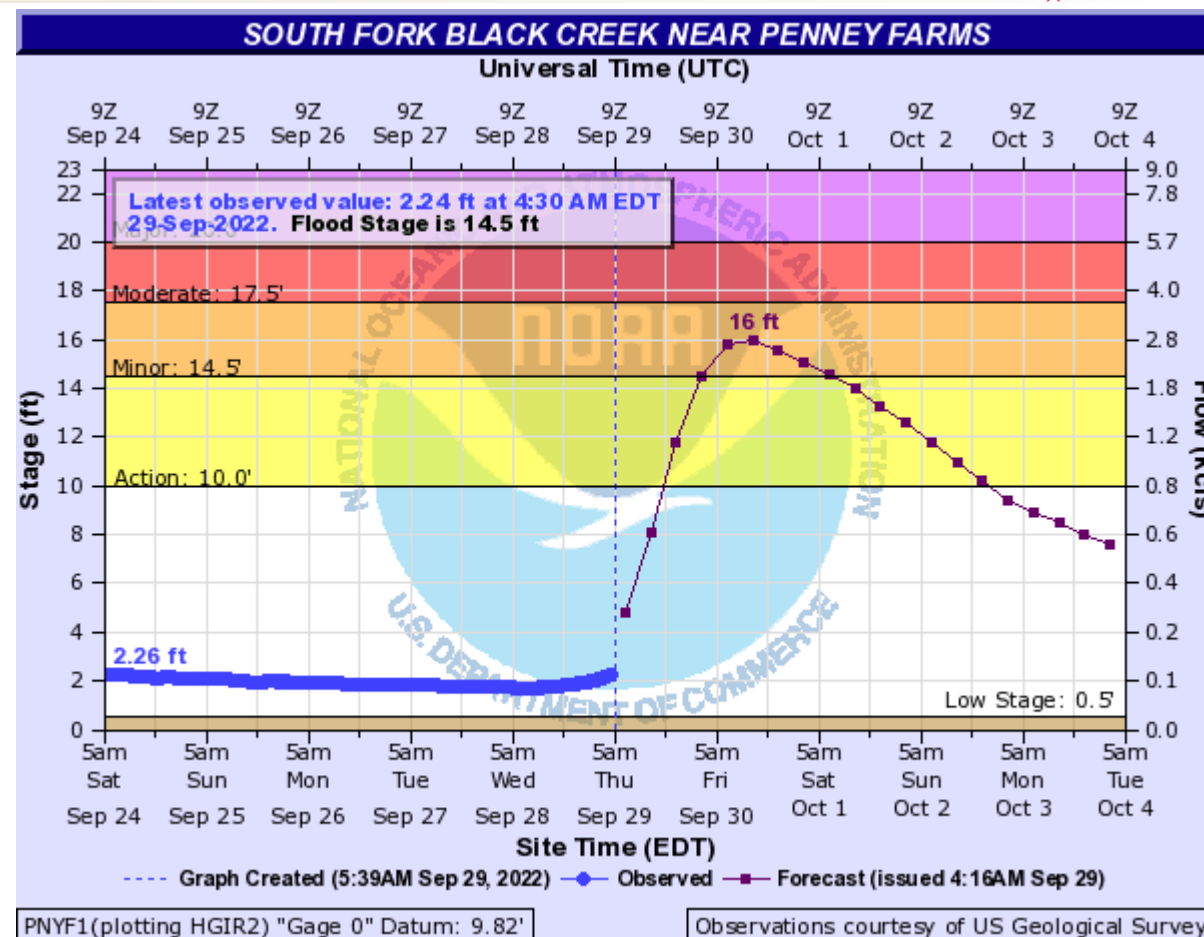
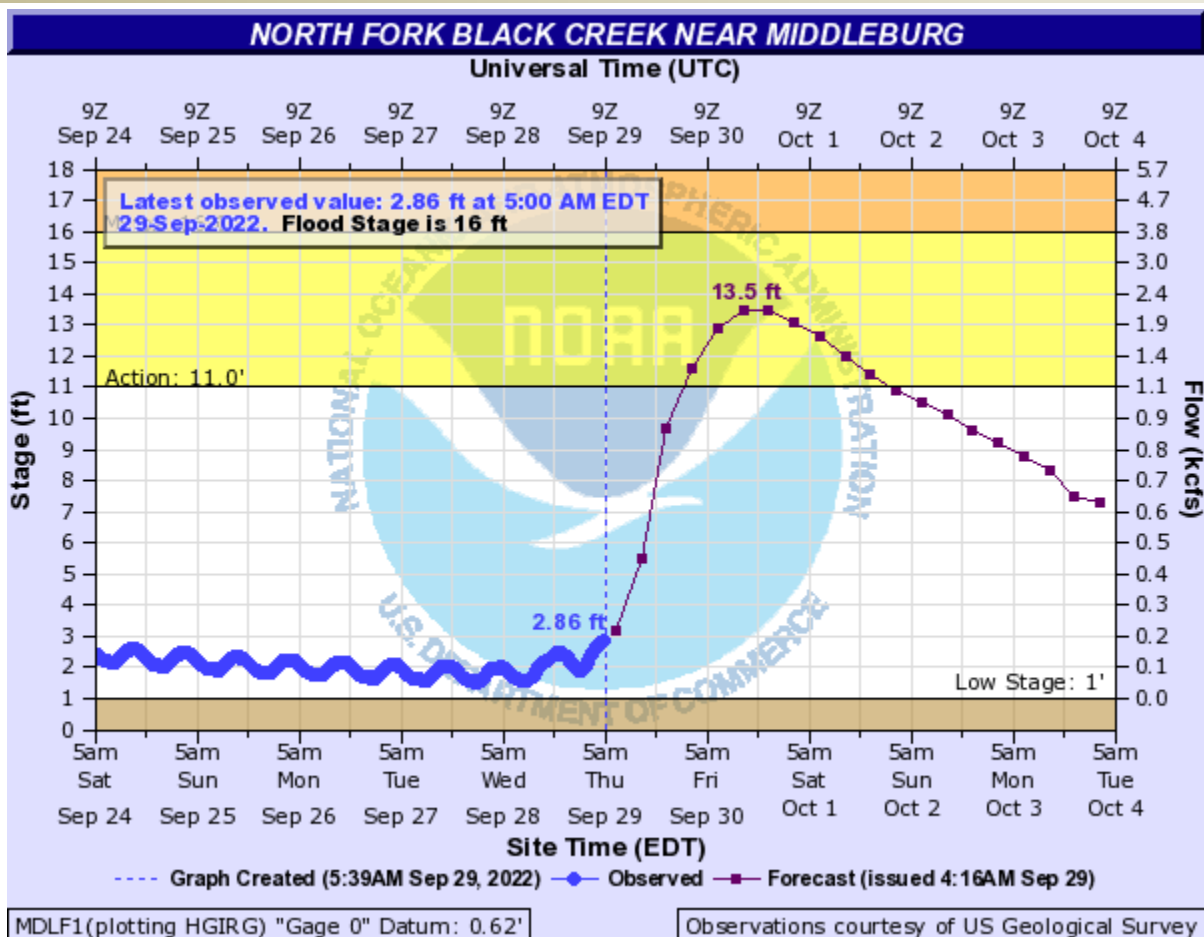
Numerous downed trees, power outages and damage to structures and mobile homes possible



Anticipated Black Creek Flooding

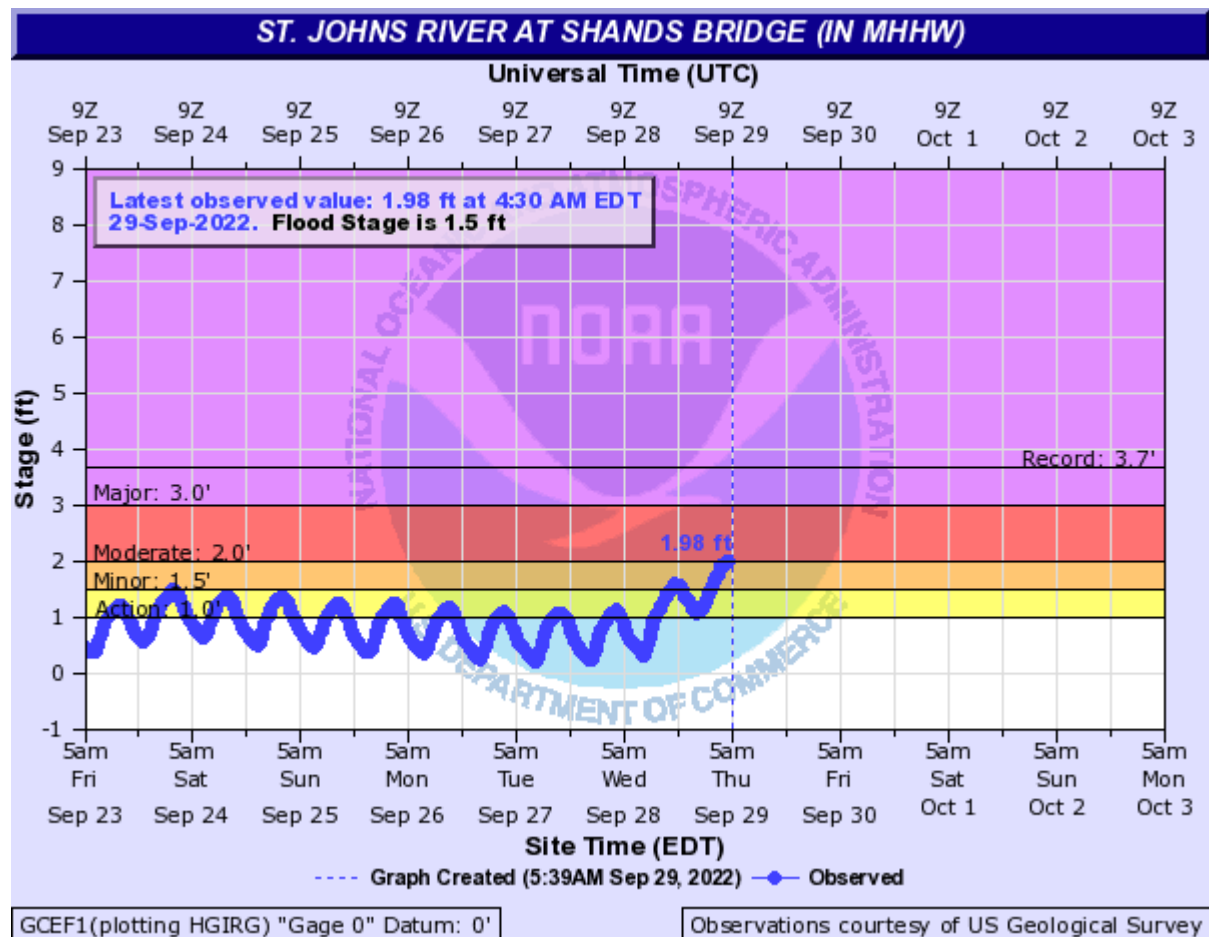
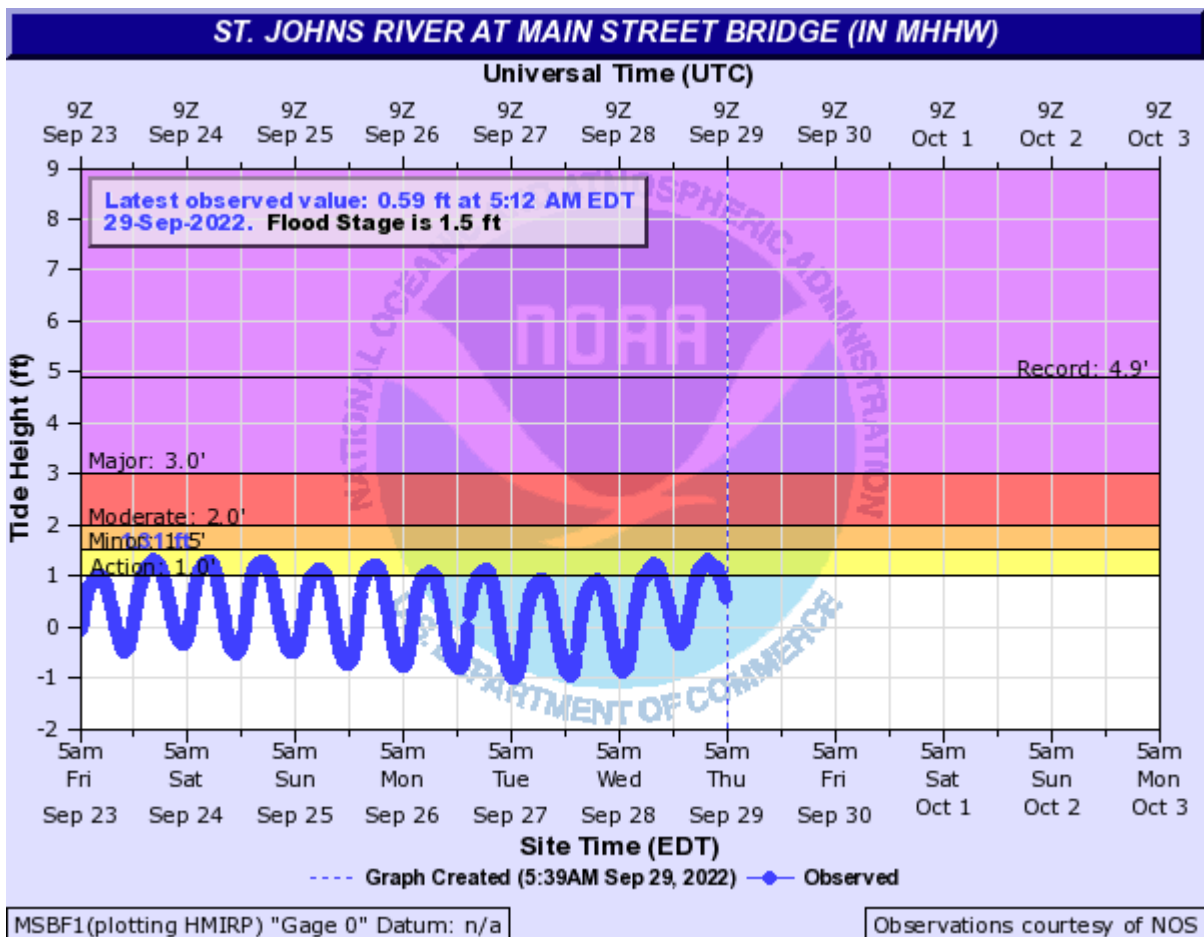


Tropical Storm Ian



- The Black Creek forecast will likely go into minor flood stage late this week.

St. Johns River Tidal Flooding



- Trapped Tides in St. Johns River from Downtown JAX to Lake George
- High tides already in Action to near Minor Flood Stage in St. Johns River Basin Early This Week
- Combo of elevated tides + surge + heavy rainfall = Flooding Threat St. Johns Basin