

Weather Impact Overview

Southeast Georgia & Northeast Florida



Isaias Main Impacts – Sunday Night through Monday

- **Tropical Storm Warning** for Flagler, St. Johns, Putnam, Clay, Duval, and coastal portions of Nassau, Glynn and Camden Counties
- **Storm Surge Watch** for Coastal Flagler & Coastal St. Johns Counties
- **Tropical Storm Warning** for Coastal Waters
- **High Risk of Rip Currents** for all Area Beaches



Coastal Hazards through Monday

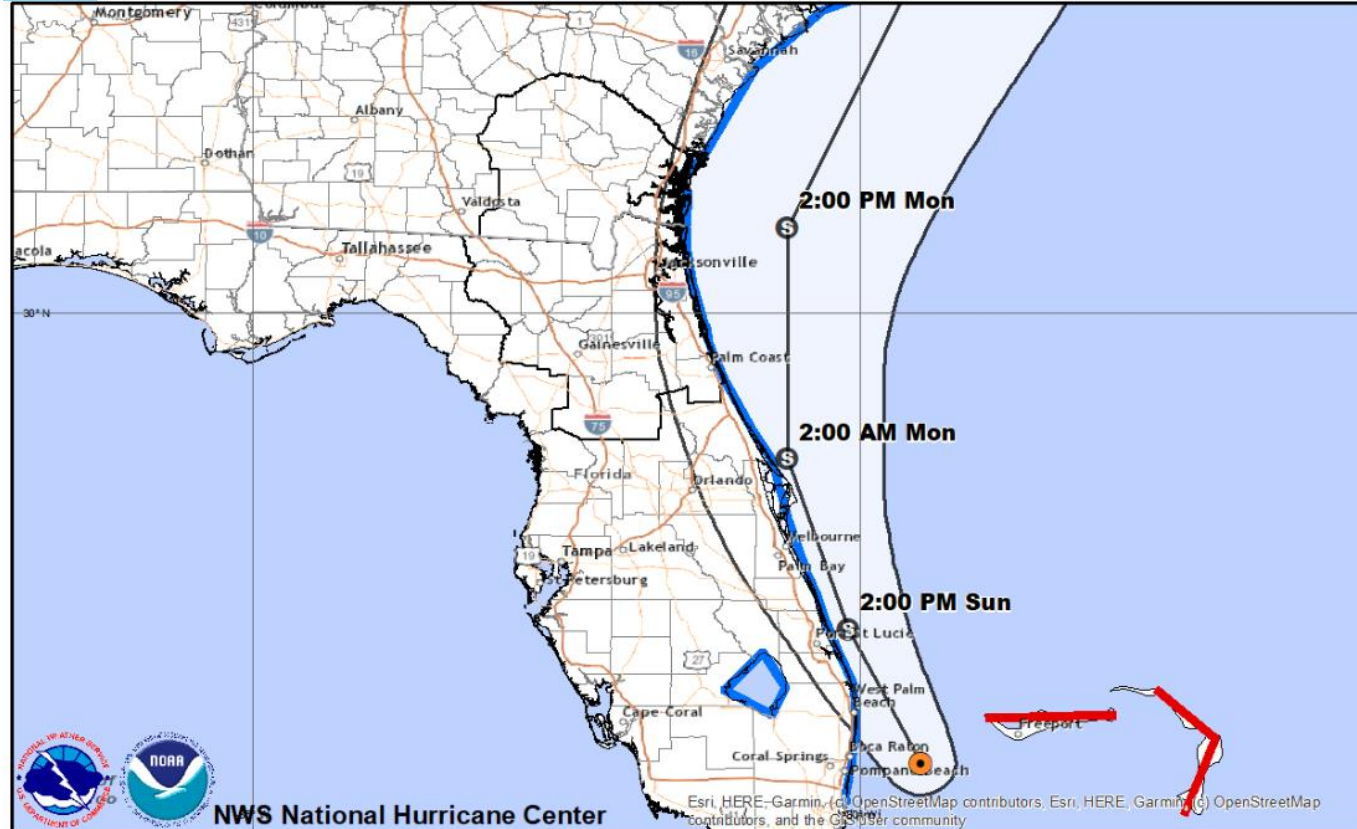
- Significant Storm Surge Inundation Possible >3 feet during Times of High Tide on Sunday Night and Monday in Coastal Flagler and Coastal St. Johns Counties
- Coastal Flood Advisory from Ponte Vedra Beach northward through St. Simons Island, including the St. Johns River for Coastal Flooding 1-3 Feet Above Ground Level
- Frequent Deadly Rip Currents, Rough Surf & Beach Erosion at Coastal Locations



Isaias 5 AM 8/2/2020



Local Coastal & Marine Hazards Sunday Night Through Monday



| | |
|------------------|---|
| Marine | <p>Tropical Storm Warning for Coastal Waters Offshore Waves 25-29 ft Nearshore Waves 14-18 ft</p> |
| Coastal | <p>Storm Surge 2-4 ft along the Flagler & St. Johns Coasts Storm Surge 1-3 ft in the St. Johns River Basin and the rest of coastal northeast FL and southeast GA Dangerous Rip Currents ALL Area Beaches Surf 6-10 ft Breakers on Sunday Night and Monday Beach Erosion During Times of High Tide Possible</p> |
| Winds | <p>Tropical Storm Warning for Flagler, St. Johns, Clay, Putnam and Duval Counties, along with Coastal portion of Nassau County and Coastal portion of Camden and Glynn Counties</p> |
| Rainfall | <p>Rainfall forecast: I-95 Corridor / Atlantic Coastline 2-4" on average Inland NE FL, SE GA up to 1" on average Locally higher amounts possible east of the I-95 Corridor</p> |
| Tornadoes | <p>The tornado threat is low at this time</p> |

Esri, HERE-Garmin, (c) OpenStreetMap contributors, Esri, HERE, Garmin, (c) OpenStreetMap contributors, and the GIS User community

Tropical Storm Isaias
 Advisory 21
 Sunday August 02, 2020
 05 AM ET
 Watches Warnings
 HU TS HU TS

Current Information: ●
 Center Location: 26.3 N 79.5 W
 Max Sustained Winds: 65 mph
 Movement: NW at 9 mph

Forecast Positions:
 ● Tropical Cyclone
 ○ Post-Tropical
 D < 39 mph S 39-73 mph
 H 74-110 mph M > 110mph

Isaias 5 AM 8/2/2020 – Inland Winds



Local Coastal & Marine Hazards Sunday Night Through Monday

 Hurricane and Tropical Storm Watches and Warn



■ Tropical Storm Warning

Graphic Created
August 2nd, 2020
5:44 AM EDT

Tropical Storm Warning

What It Means...

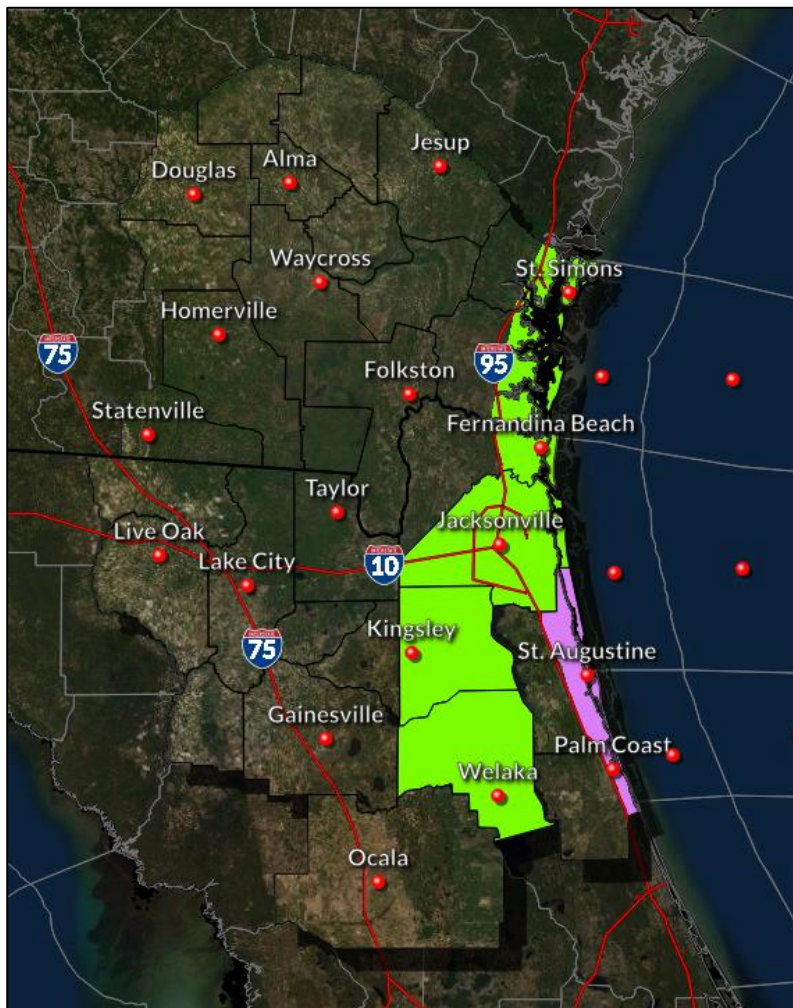
| Tropical Storm Warning | Tropical Storm Watch |
|---|---|
| Tropical storm conditions (sustained winds of 39 to 73 mph) are expected within the next 36 hours | Tropical storm conditions (sustained winds of 39 to 73 mph) are possible within the next 48 hours |



Isaias 5 AM 8/2/2020 – Storm Surge



Local Coastal & Marine Hazards Sunday Night Through Monday



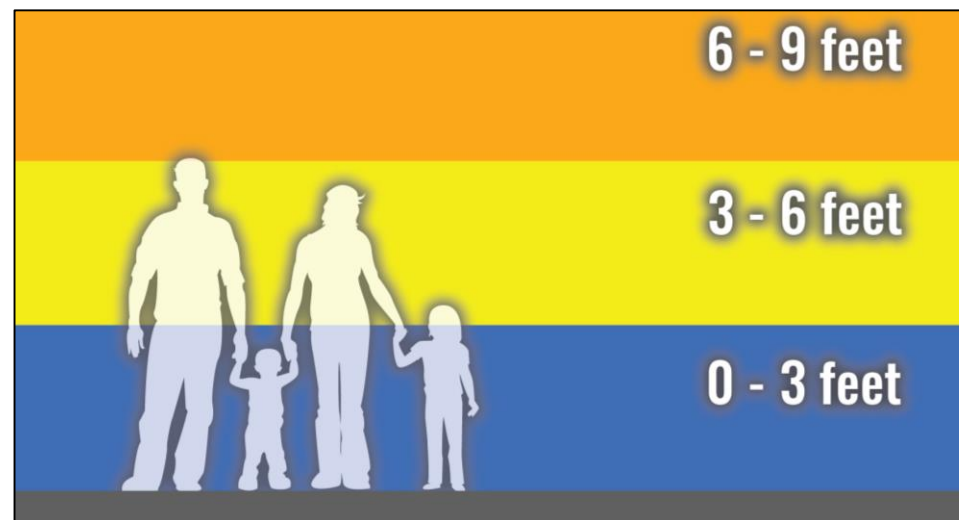
What It Means...

Storm Surge Watch

Significant Storm Surge Inundation Possible >3 feet during Times of High Tide on Sunday Night and Monday in Coastal Flagler and Coastal St. Johns Counties

Coastal Flood Advisory

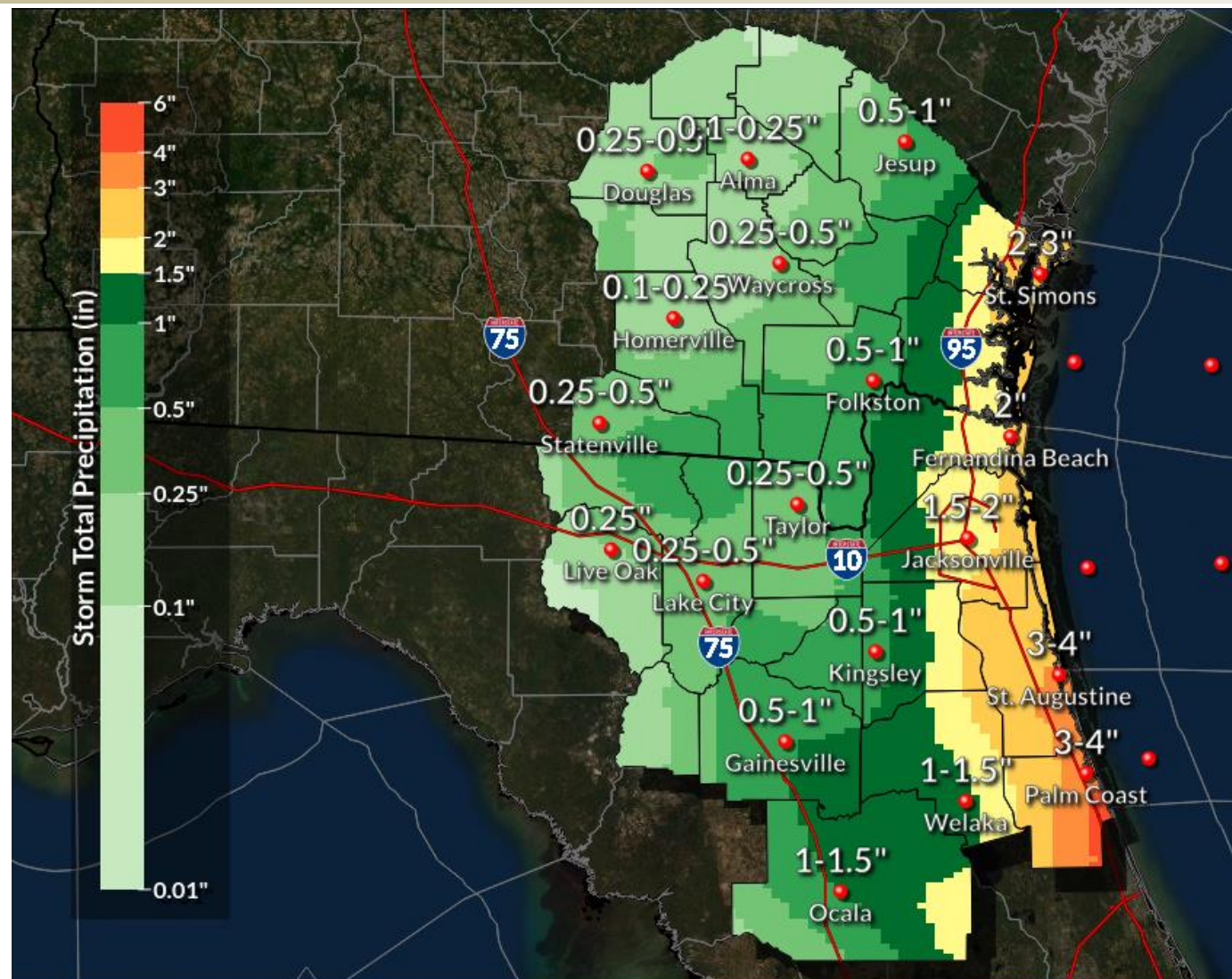
Coastal Flood Advisory from Ponte Vedra Beach northward through St. Simons Island, including the St. Johns River for Coastal Flooding 1-3 Feet AGL



Isaias 5 AM 8/2/2020 – Storm Total Rainfall



Local Coastal & Marine Hazards Sunday Night Through Monday



- 2-4" Rainfall accumulations along the Atlantic Coastline / I-95 Corridor
- Locally Higher Totals Possible Along the Flagler County Coastline
- Up to 1" over inland NE FL, SE GA
- No widespread flooding is anticipated, but isolated higher totals could lead to localized flooding