

Flagler County Inmate Facility Project Update



Flagler County Inmate Facility



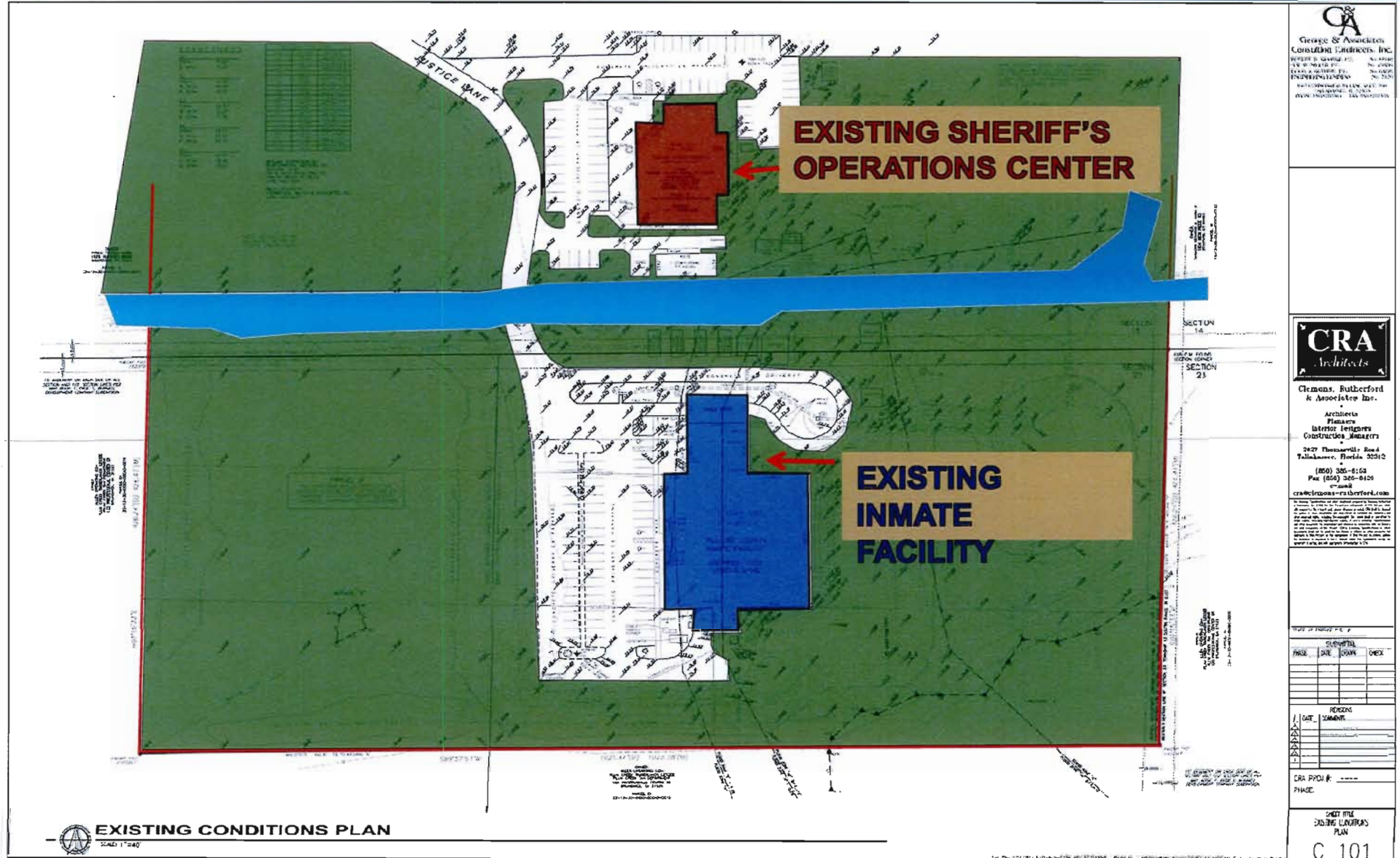
Site Design



Flagler County Inmate Facility



Review of Planning/Design – Site Plan Existing



Flagler County Inmate Facility



Master Planning/Design – Site Plan w/Sequencing

Three Phases In Current Scope

- new housing pod
- administrative, processing/booking, sally port, and kitchen additions
- remodeling of existing buildings (infirmary, housing, visitation)

Two Future Phases 512 Beds Each Pod

Existing Sheriff's Operations –
Video Visitation/911 Back Up
Remodeling

Future Housing Pod
Multi-Story

Future Housing Pod
Multi-Story

Support Services
Addition and Remodeling

New 272 Bed
Housing Pod

STORM WATER
POND
27400 SF

STORM WATER
POND
35990 SF

SITE PLAN
SCALE: 1"=40'

Architects
Hessberg
Interior Designers
Construction Managers
2027 Thomasville Road
Tallahassee, Florida 32312
(850) 386-9153
Fax (850) 386-9420
e-mail
cra@telemonia-rutherford.com

Scale of Plans: P.C. #
SUBMITTAL
PHASE DATE DRAWN CHECK
REVISIONS
DATE COMMENTS
CRA PROJ. #
PHASE:

SHEET TITLE
SITE PLAN

C 301

Flagler County Inmate Facility



Building/Facility Design

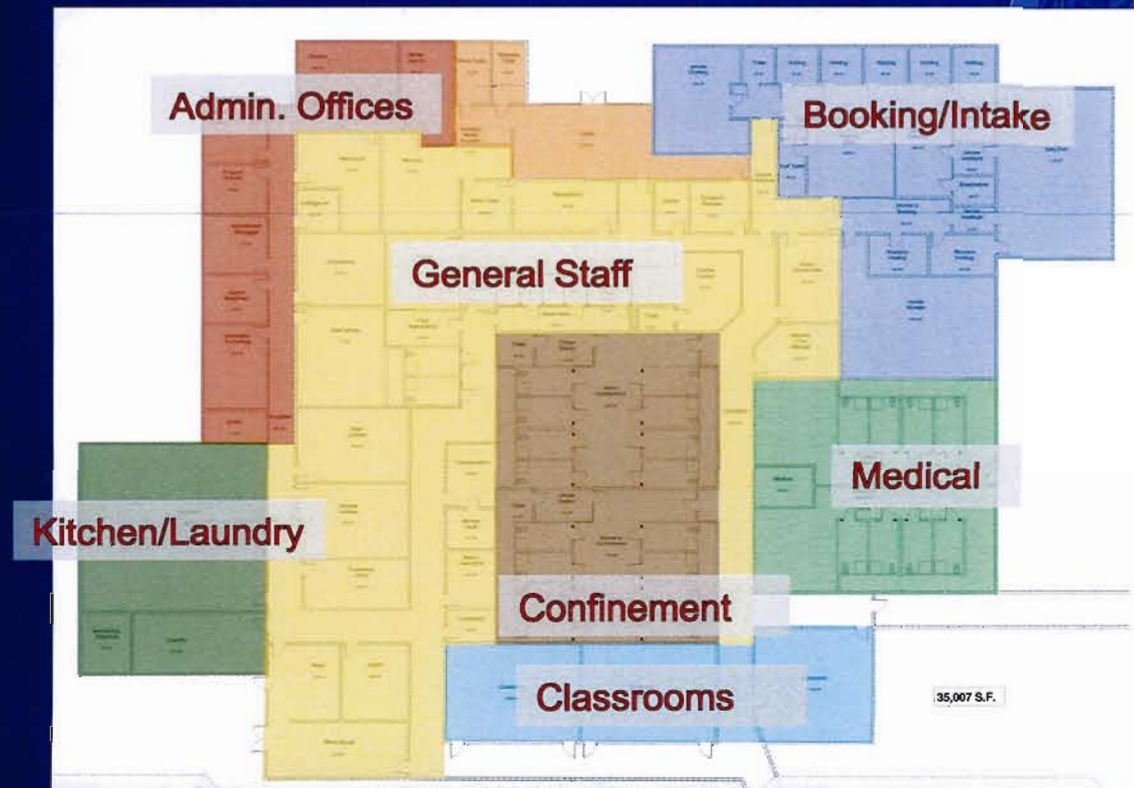
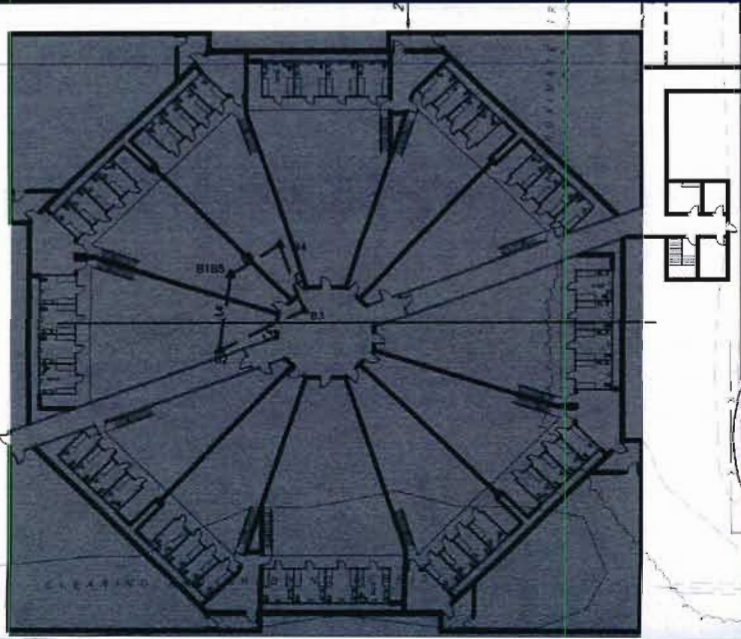


Flagler County Inmate Facility

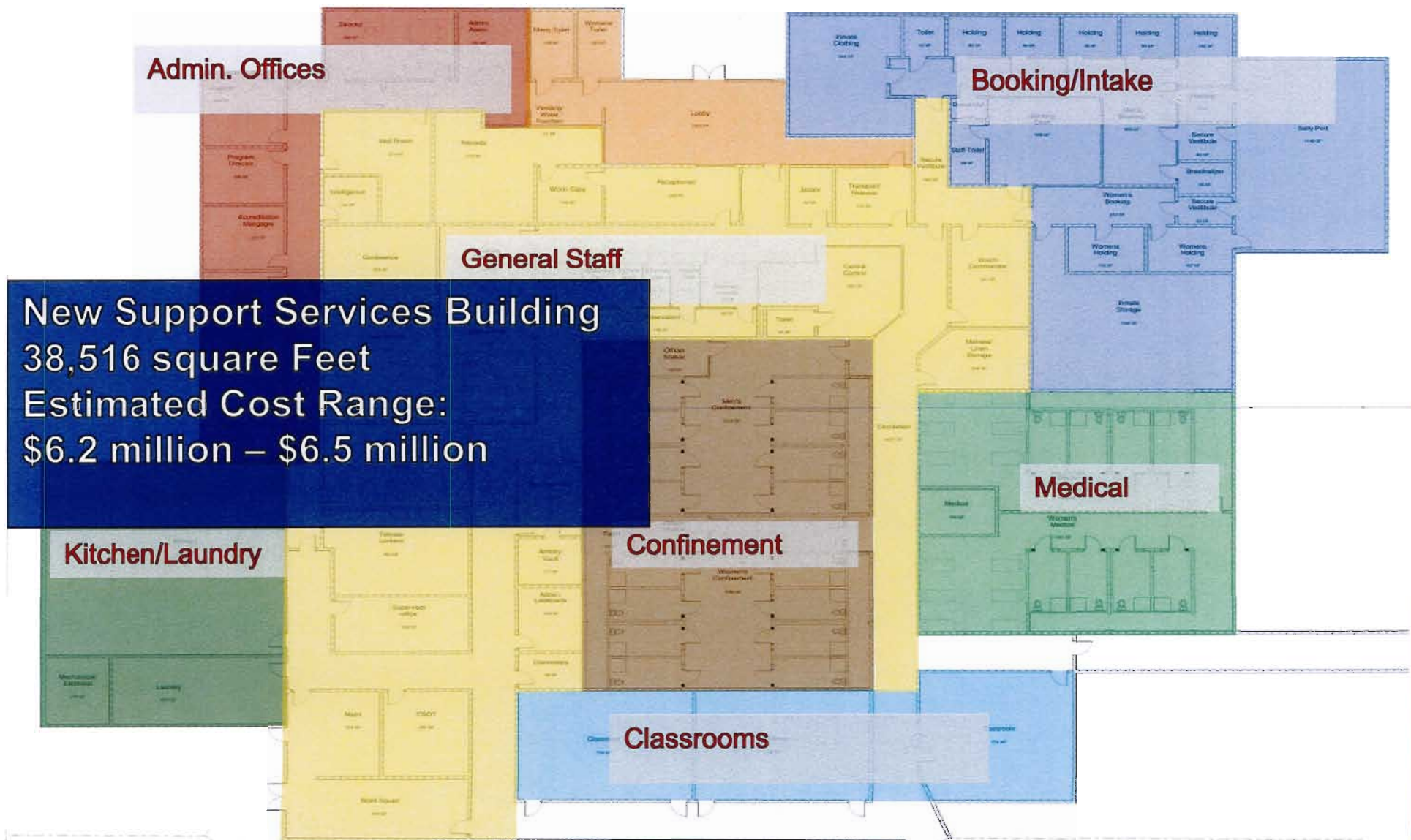


Review of Planning/Design

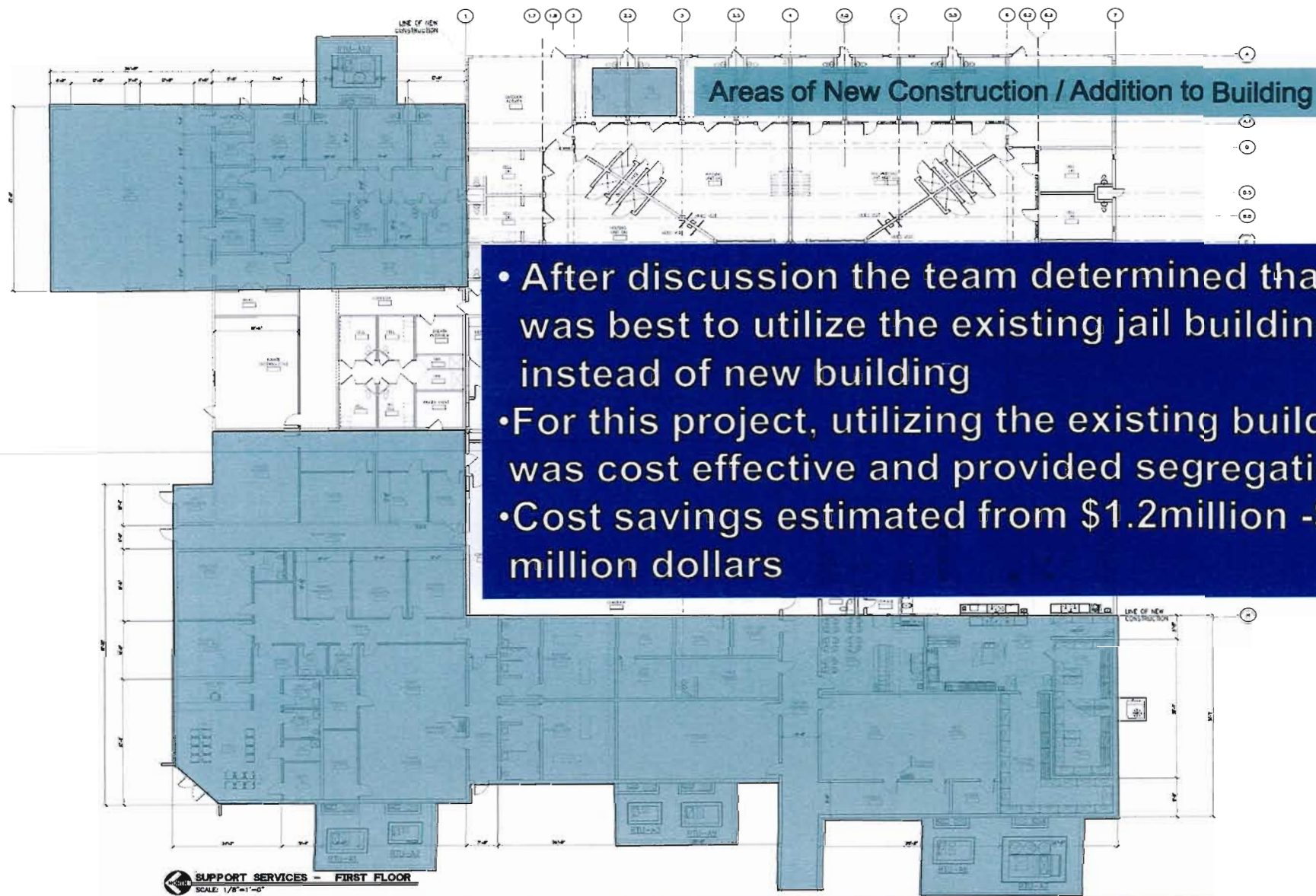
- Original Plan Design Included A New Support Services Building And A New Housing Facility
- New Pod Designed To Maximize Segregation Abilities
- 8-12 Divisions Considered During Design Process



Review of Planning/Design – Support Services



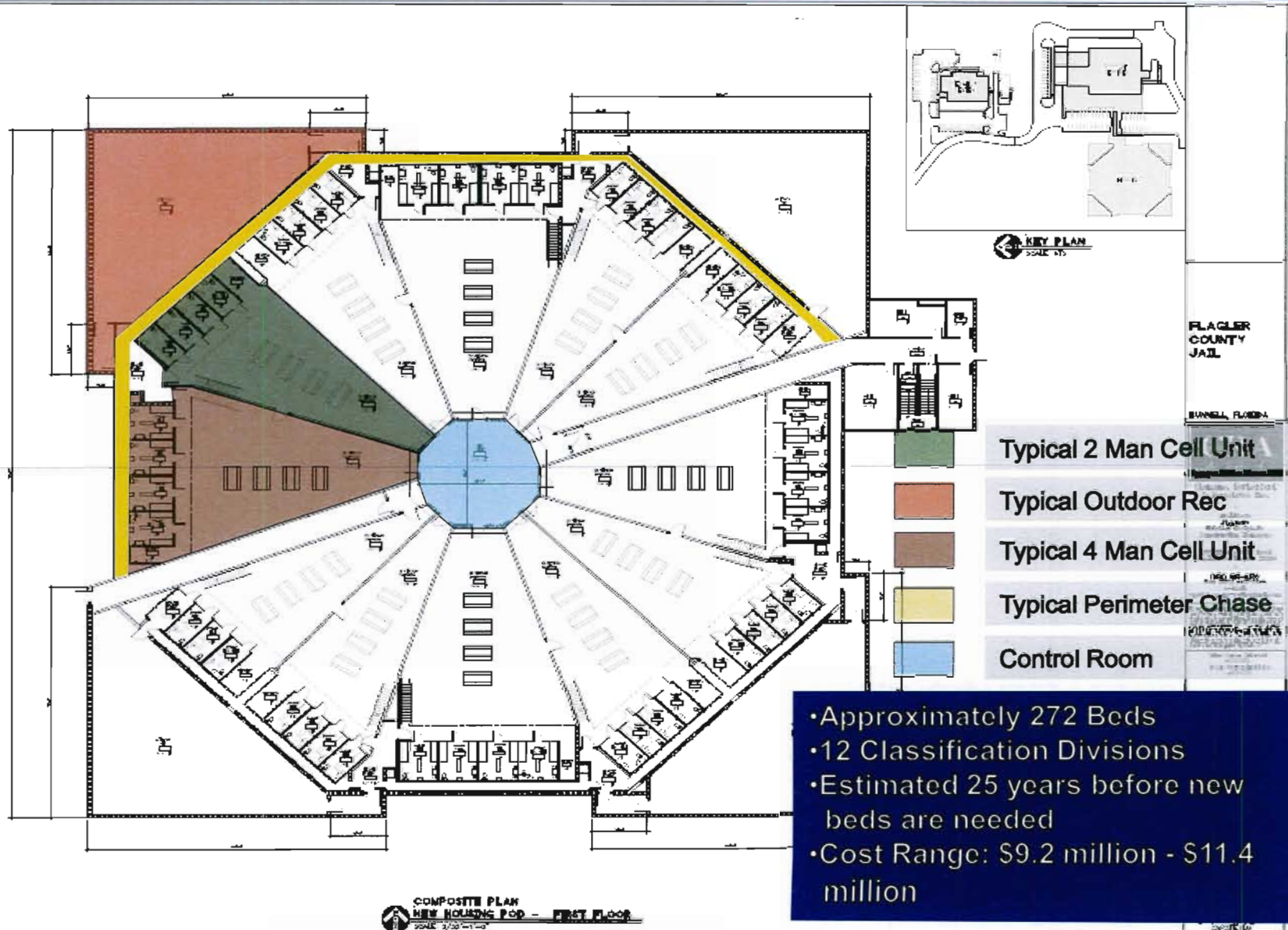
Review of Planning/Design – Support Services



Architectural floor plan of the first floor of a building, showing remodeling and existing areas. The plan includes a large central area labeled "Areas of Remodeling/Existing Building" in brown, and several peripheral areas in blue. Dimensions are provided for various sections. A title block at the bottom left reads "SUPPORT SERVICES - FIRST FLOOR" and "SCALE: 1/8"=1'-0". A north arrow is located in the top left corner.

CRA PROJECT: 13045
PHASE: DESIGN
DEVELOPMENT
SHEET NO.:
SUPPORT SERVICES BUILDING
FIRST FLOOR
A1.0

Review of Planning/Design – New Housing Pod



Construction Methods/Practices



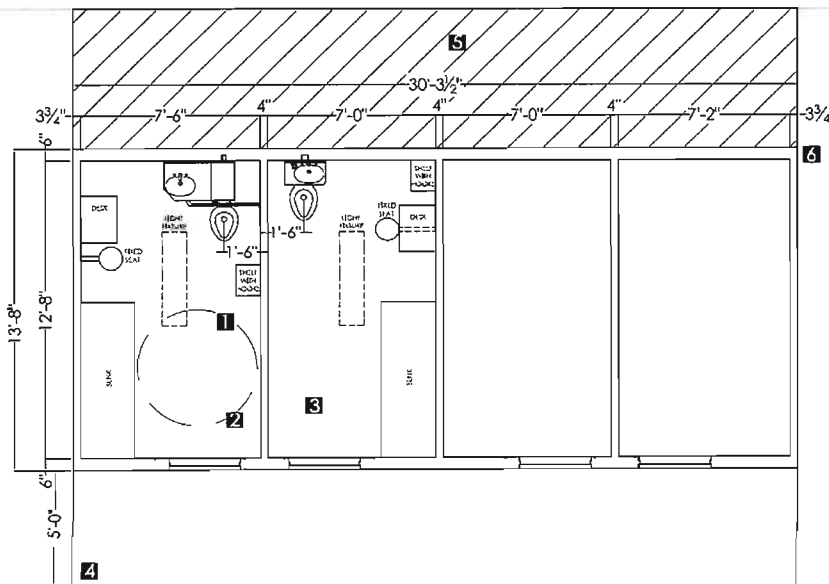
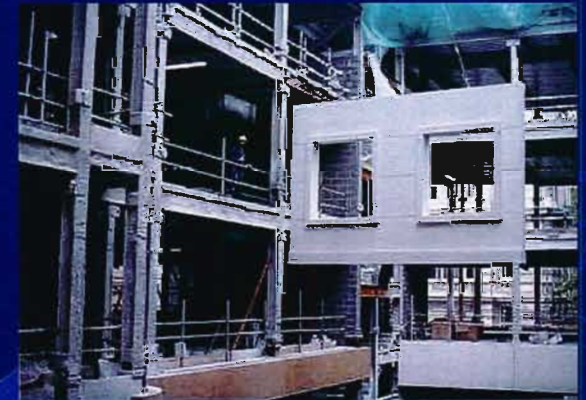
Flagler County Inmate Facility



Cell Construction – Housing Pod

- Construction For Building Will Utilize Pre cast Concrete and CMU
- Materials were selected for durability and security
- Exterior Finish will be painted/sealed

Concrete Cell – Cast Exterior Wall
Integral with Cell



80 SQ FT QUAD CELL MODULE
WITH A REAR CHASE

NOTES:
1. ADA CELL
2. SAMPLE ADA CELL FURNITURE LAYOUT
3. SAMPLE STANDARD CELL FURNITURE LAYOUT
4. MEDIANINE SAUCERY INTEGRAL WITH LOWER LEVEL DOOR
5. CHASE CORRIDOR BY OTHERS
6. UNINSULATED MODULE WALL SHOWN. EXTERIOR FACING CORRIDOR WALL SHALL BE INSULATED (NIC).

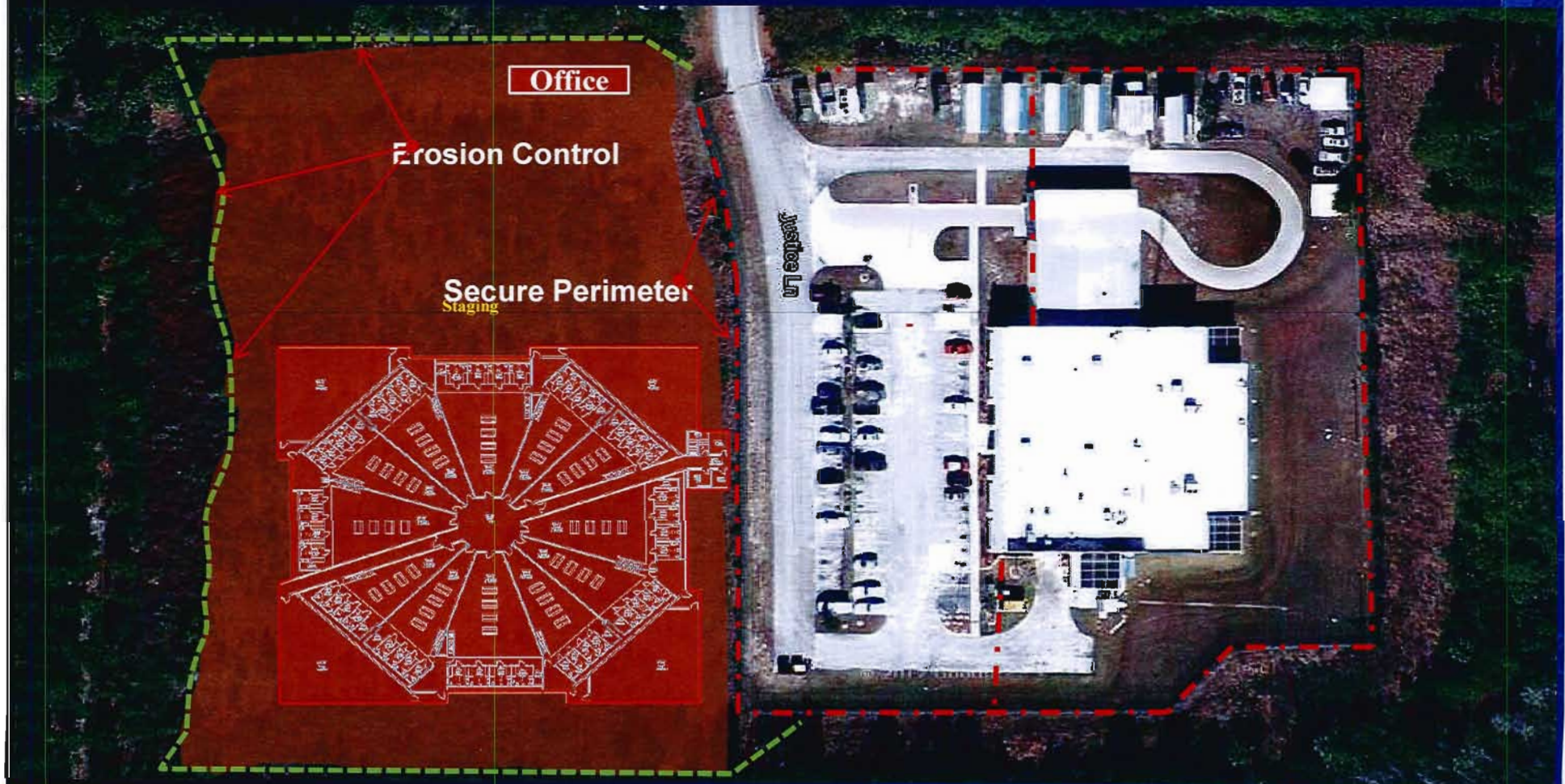
REVISIONS	
1	
2	
3	
4	

RW
ROTONDO WIRICH
ROTONDO WIRICH ENTERPRISES, INC.
4800 WILLOWDALE BLVD. SUITE 100
DALLAS, TX 75243
PH: (214) 256-7740 FAX: (214) 256-7742
WWW.ROTONDOWIRICH.COM

DATE: 10/10/10
DRAWN BY: [blank]
CHECKED BY: [blank]
APPROVED BY: [blank]
1 OF 4

Construction Project Coordination

Project Coordination - Approach & Methods



Flagler County Inmate Facility

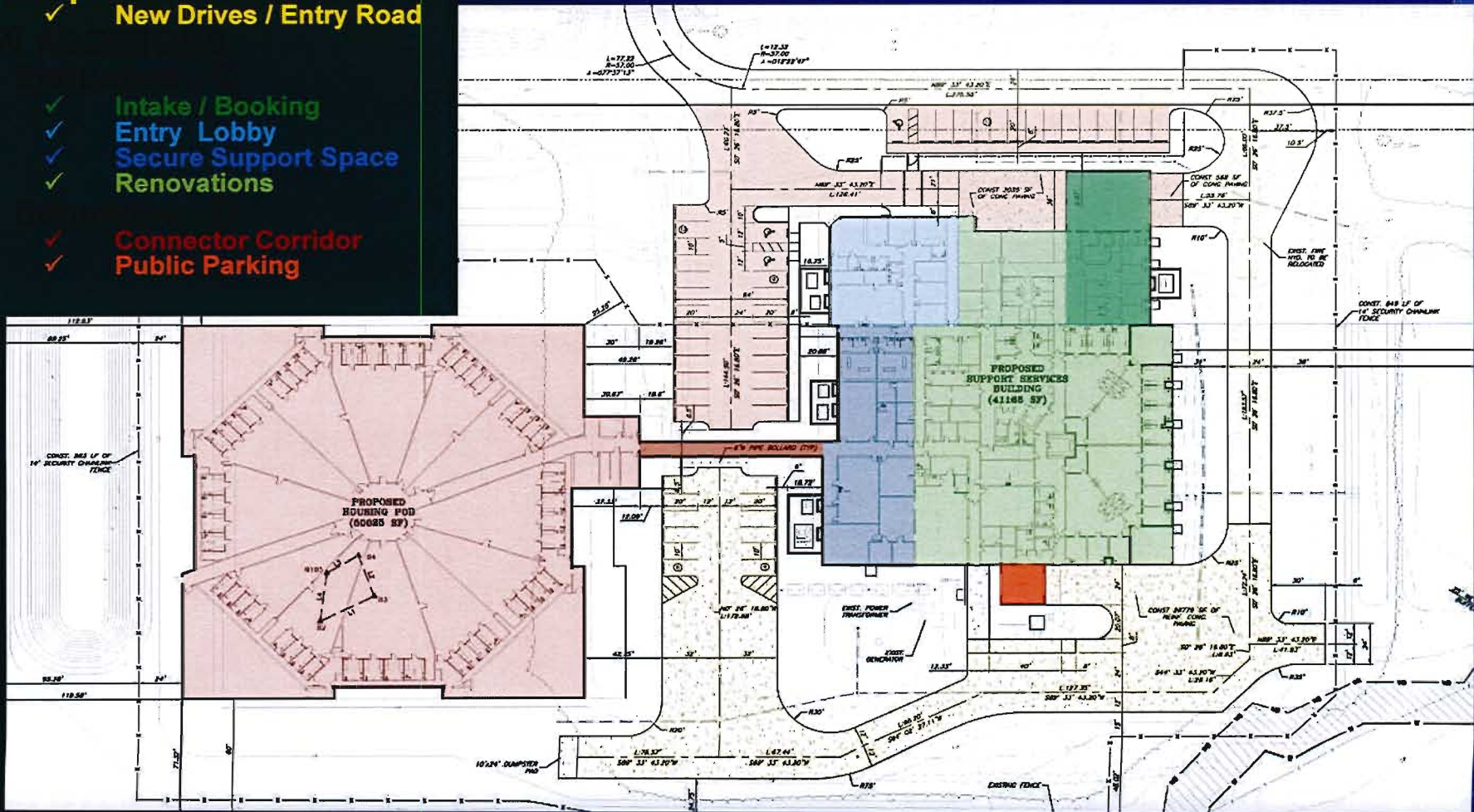


Construction Project Coordination

Schedule & Sequencing

- **Sequence - A**
 - ✓ New Housing
 - ✓ Relocate Intake
- **Sequence - B**
 - ✓ New Drives / Entry Road

- ✓ Intake / Booking
- ✓ Entry Lobby
- ✓ Secure Support Space
- ✓ Renovations
- ✓ Connector Corridor
- ✓ Public Parking



Flagler County Inmate Facility



Construction Project Coordination

Scheduling & Sequencing Summary - Example *Detention Housing Progress & Sequencing*



Month 3



Month 4



Month 6



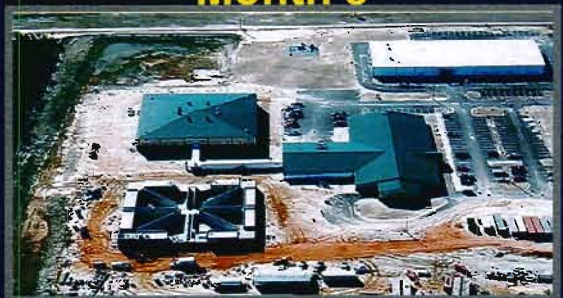
Month 8



Month 9



Month 10



Month 11



Month 12

- ✓ Exterior Veneer started prior to installation of roof deck (Month 8)
- ✓ Dry-In @ Roof Deck prior to start of Roof Framing (Month 9)
- ✓ Housing Unit 1 completed in **7-months**



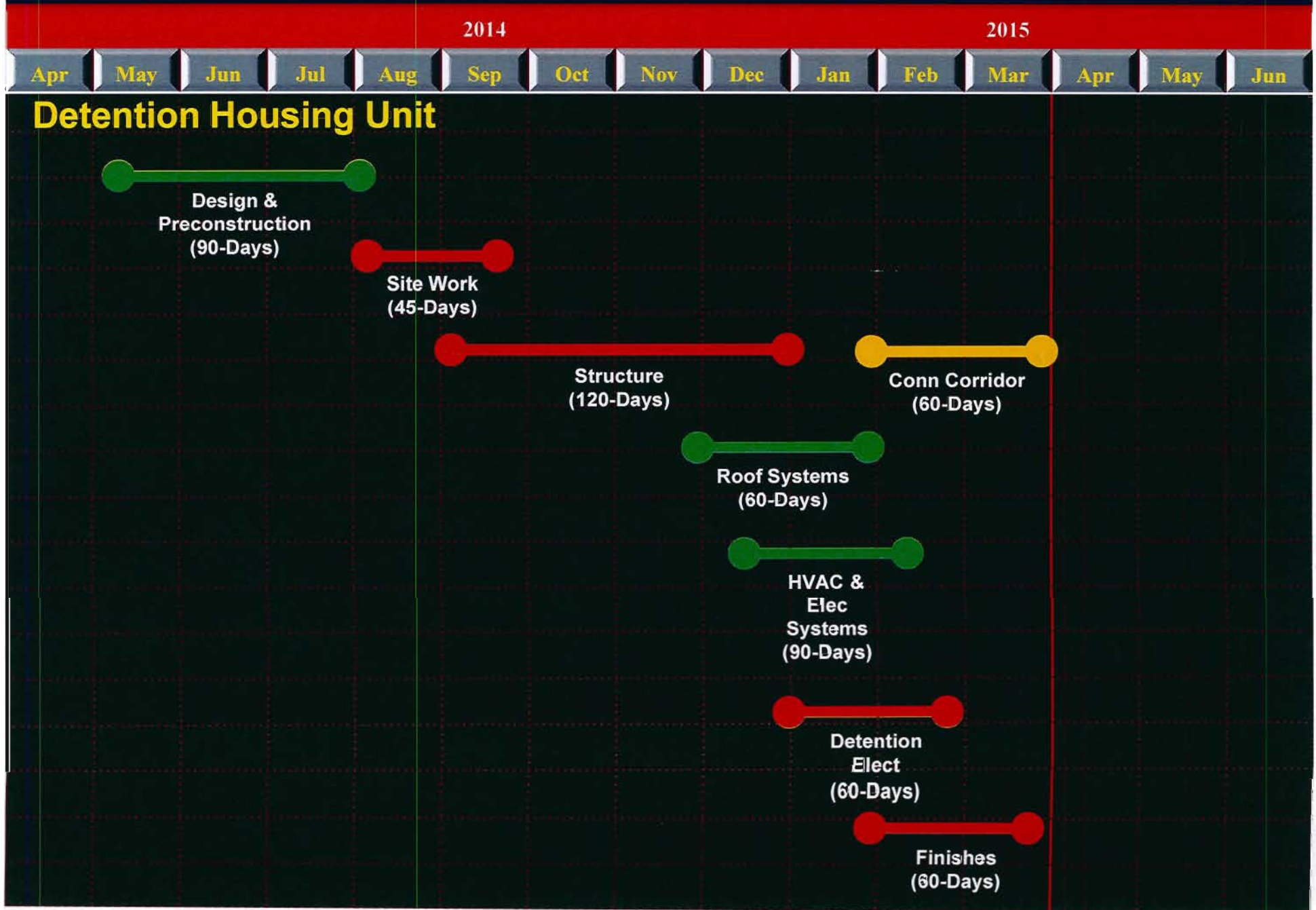
Schedule



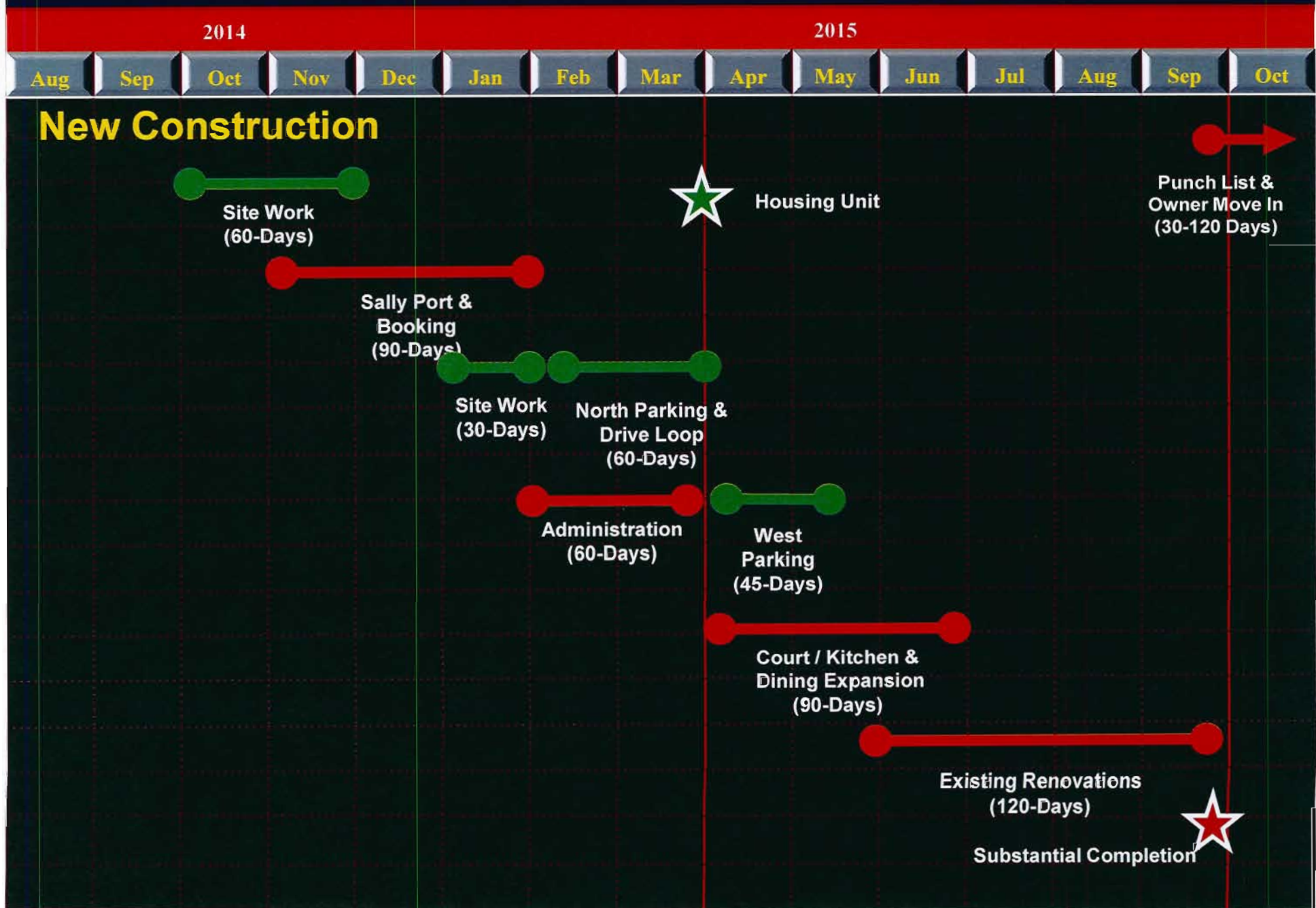
Flagler County Inmate Facility



Scheduling and Sequencing Summary



Scheduling and Sequencing Summary



Schedule

Schedule for Design and Construction

DD Documents	-	Completed/Under Review
Environmental Permits	-	Submitted/Under Review
75% CD Documents	-	June 2014
Permit Application	-	June 2014
GMP Issued by CM	-	July-August 2014
100% CD/Conformance Documents	-	August 2014
Notice To Proceed	-	September 2014/October 2014
Construction Start (Early Site Work Pkg.)	-	September 2014/October 2014
Construction Completion-		October 2015/January 2016

Projected Costs



Flagler County Inmate Facility



Projected Project Costs - Estimated

Overall Conceptual Budget Range

\$14,000,000.00 - \$15,000,000.00

- Costs Contingent Upon:
Final Fees/Estimates
Review Comments
CM Input and Clarifications**

Discussion/Questions



Flagler County Inmate Facility

