

# City of Palm Coast, Florida Agenda Item

**Agenda Date:** October 1, 2024

<b>Department</b>	CONSTRUCTION MANAGEMENT & ENGINEERING	<b>Amount</b>
<b>Division</b>	ENGINEERING	<b>Account #</b>
<b>Subject:</b>	PRESENTATION - COMMUNITY CENTER PARKING LOT DESIGN AND EXPANSION UPDATE	
<b>Presenter:</b>	Eric Gebo, Architect III	
<b>Attachments:</b>	1. Presentation	
<b>Background:</b> <b>Council Priority:</b> <b>B. Safe and Reliable Services</b>		
Staff will present City Council with an update on possible solutions and options for the expansion of the Community Center parking lot.		
<b>Recommended Action:</b>	<b>FOR PRESENTATION AND DIRECTION</b>	



# **City of Palm Coast Community Center**

Parking Lot Design and Expansion Update

# Community Center Master Plan

- Potential Community Center Parking

- Existing parking inadequate
- LDC requires 193 spaces
- 138 spaces provided
- Minimum of 250 spaces required based on historical attendance data
- Programming difficulties
- Loss of rental
- Master Plan accommodated expanded parking





# Existing Fire Station 22 Community Center Parking Expansion

- Potential Community Center Parking
  - Accessible connection with Community Center site
  - Ability to expand into the adjacent site to the East
  - Options for alternate parking explored
  - FS site - .99 acres
  - No wetlands / floodplain impacts
  - Adjacent parcel - wetland mitigation required

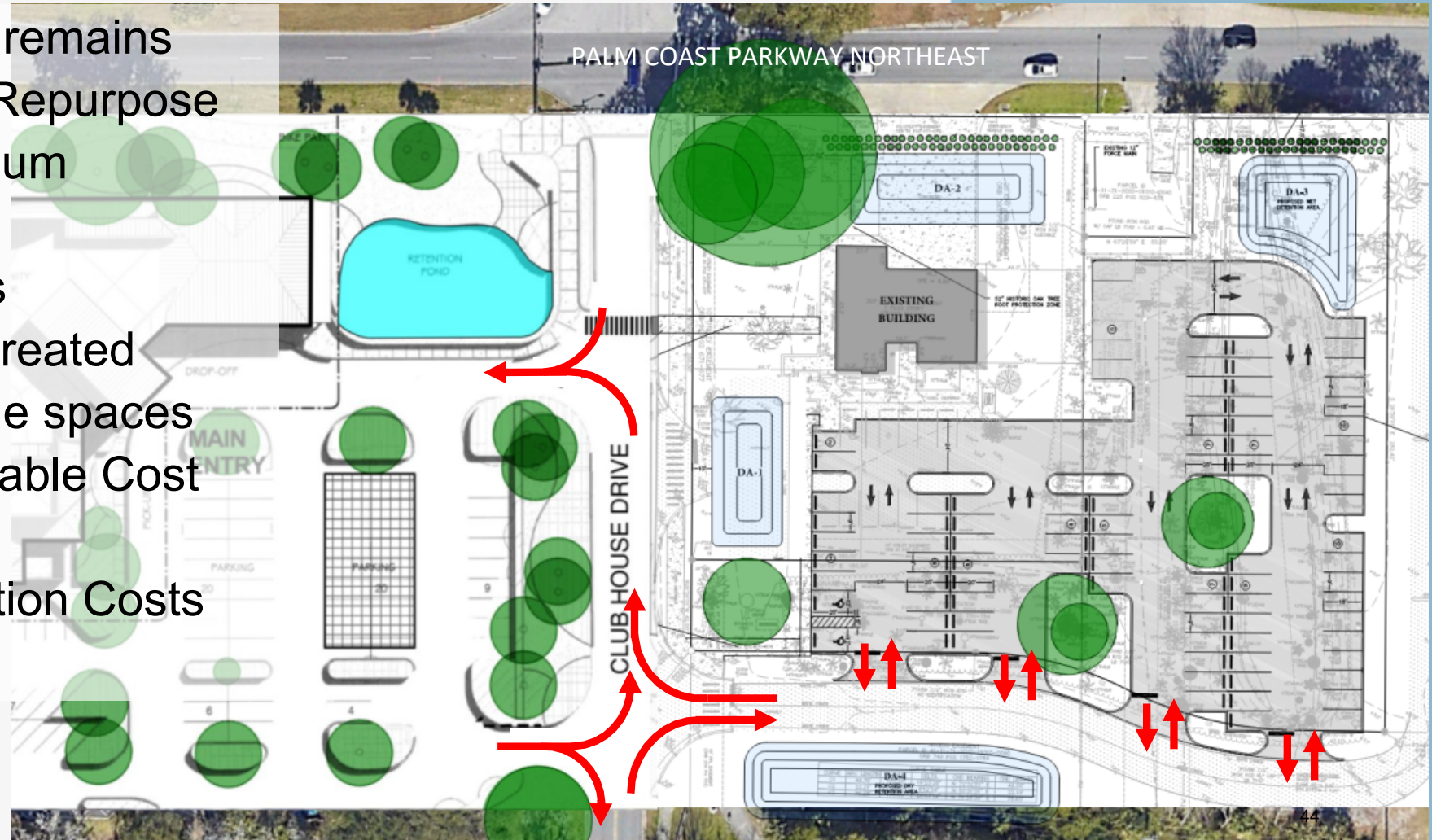




# Existing Fire Station 22

## Community Center Parking Expansion – Option 1

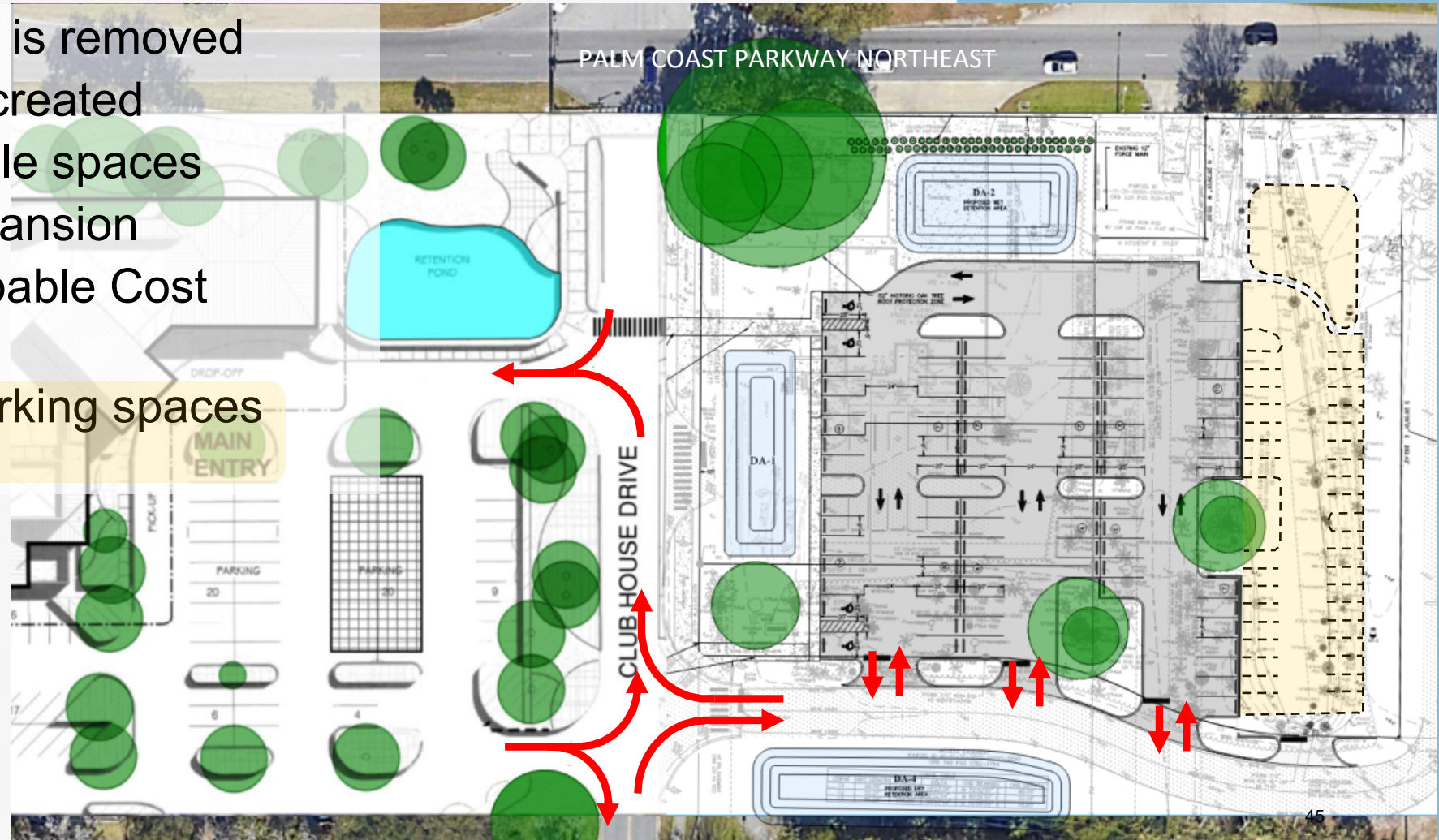
- Existing building remains
  - Renovate & Repurpose
  - History museum
  - Arts venue
  - Public events
- 90 new spaces created
- 228 total available spaces
- Estimate of Probable Cost
  - \$2,200,000
- Building Renovation Costs
  - \$1,100,000



# Existing Fire Station 22

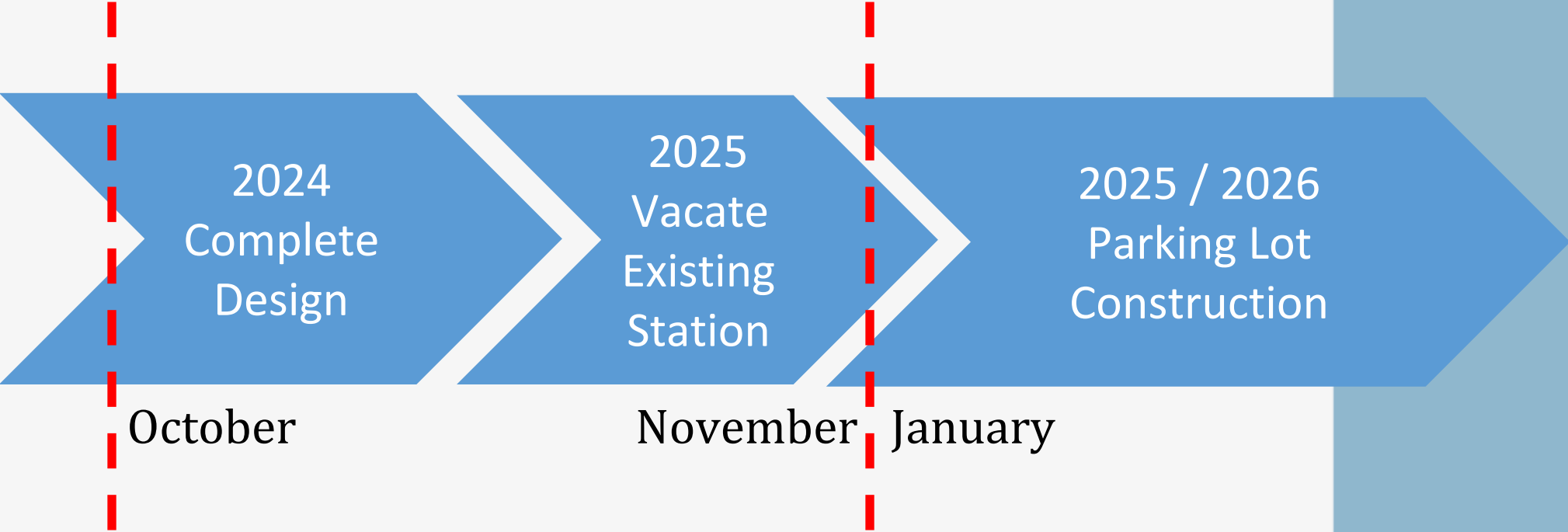
## Community Center Parking Expansion – Option 2

- Existing building is removed
- 85 new spaces created
- 223 total available spaces
- Potential for expansion
- Estimate of Probable Cost
  - \$1,650,000
- Additional 36 parking spaces
  - \$1,100,000



# Existing Fire Station 22 Community Center Parking Expansion

Timeline Relative to New Fire Station 22



# Existing Fire Station 22

## Council Actions

- Option 1
  - Existing building to remain with no modifications
  - Construct 90 new parking spaces on the Fire Station parcel and the parcel to the east
- Option 2
  - Remove existing building and parking and construct 85 new parking spaces
  - Remove existing building and construct 121 spaces
- Future Action
  - Council approval of negotiated design scope and fee

