

**Chick-fil-A**  
5200 Buffington Road  
Atlanta, Georgia 30349-2998

**Bowman**

Certificate of Authorization License No. 30462  
930 SE 17th St, Suite 300  
Fort Lauderdale, FL 33316  
Phone: (954) 774-8481  
www.bowman.com  
© 2024 Bowman Consulting Group Ltd

Seal

ANDRES MIZRAHI, P.E.  
FLORIDA REG. NO. 92421

**CHICK-FIL-A**  
**SEMINOLE WOODS**  
**FSU**  
**5845 STATE ROUTE 100,**  
**PALM COAST, FL 32164**

**FSU#05654**

BUILDING TYPE / SIZE: P14 LRG

**REVISION SCHEDULE**  
NO. DATE DESCRIPTION

CONSULTANT PROJECT # 010014-01-215

PRINTED FOR PERMIT

DATE 7/22/2024

DRAWN BY JRP

Information contained on this drawing and in all digital files produced for above named project may not be reproduced in any manner without express written or verbal consent from authorized project representatives.

SHEET SITE PLAN

SHEET NUMBER

C-2.0

LEGEND	
PROP. ASPHALT DRIVE	EX. CONCRETE SIDEWALK
PROP. CONC. SIDEWALK	EX. CONCRETE D CURB
PROP. CONC. PAVEMENT	EX. CURB AND GUTTER
PROP. TYPE "F" CURB	EX. SANITARY CLEANOUT
PROP. CLEARANCE BAR	EX. SANITARY MANHOLE
PROP. PARKING STRIPE	EX. DRAINAGE GRATE INLET
PROP. HANDICAP MARKING	EX. SIGN
PROP. SITE SIGNAGE	
PROP. DIRECTIONAL ARROW	
PROP. BOLLARD	
PROP. PARKING COUNT	
PROP. CATCH BASIN	
PROP. CURB INLET	
PROP. GREASE TRAP	

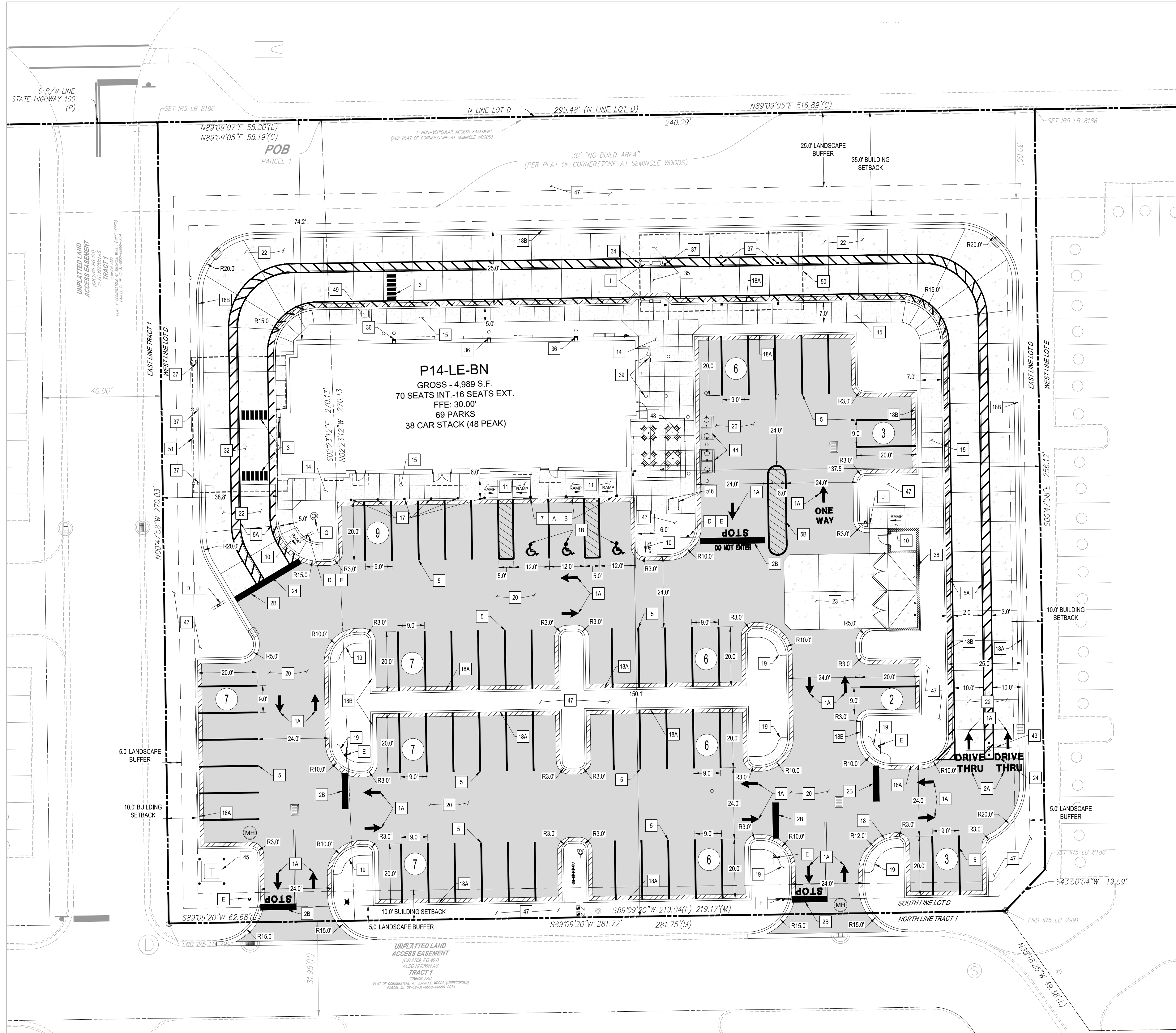
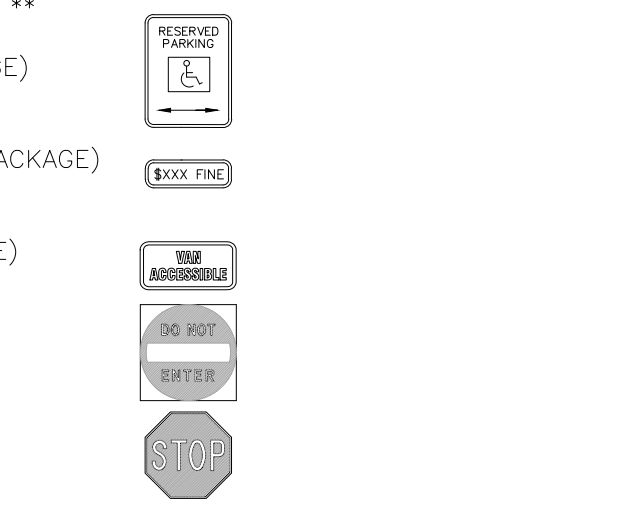
SITE SUMMARY	
JURISDICTION	FLAGLER COUNTY
ZONING	C-2 (GENERAL COMMERCIAL AND SHOPPING CENTER)
USE	FAST FOOD RESTAURANT
TYPE OF CONSTRUCTION	NEW CONSTRUCTION
PARCEL ID	08-12-31-0850-00080-0074
SIZE	79,696 SF (1.83 AC)
BUILDING	
SIZE	4,989 SF
HEIGHT	21' - 8" ± 1 STORY
CONSTRUCTION TYPE	TYPE V(000)
F.A.R.	0.06
PARKING	
STALL SIZE	9' X 20' @ 90°

PARKING CALCULATIONS			
USE	QTY	RATIO	REQUIRED
GROSS SEATING AREA	2,460 SF	1 SPACE PER 50 SF GROSS SEATING AREA + 1 SPACE PER EMPLOYEE PER SHIFT	49 + 10 = 59
STANDARD PARKING PROVIDED			66
HANDICAP PARKING REQUIRED			3
HANDICAP PARKING PROVIDED			3
TOTAL PARKING PROVIDED			69
*ASSUMING 10 EMPLOYEES PER SHIFT			

LANDSCAPE BUFFERS			
BUFFER	REQUIRED (FT)	PROVIDED (FT)	
FRONT (NORTH)	25'	37.7'	
REAR (SOUTH)	5'	5.0'	
INTERIOR SIDE (WEST)	5'	12.4'	
INTERIOR SIDE (EAST)	5'	6.2'	

BUILDING SETBACKS		
SETBACK	REQUIRED (FT)	PROVIDED (FT)
FRONT (NORTH)	35'	74.2'
REAR (SOUTH)	10'	150.1'
INTERIOR SIDE (WEST)	10'	38.8'
INTERIOR SIDE (EAST)	10'	137.5'

SIGN LEGEND	
A	HANDICAP PARKING SIGN (SEE SIGNAGE PACKAGE) R7-8; 12" X 18" (TYP.)
B	HANDICAP PARKING FINE SIGN (SEE SIGNAGE PACKAGE) 6" X 12" (TYP.)
C	"VAN ACCESSIBLE" SIGN (SEE SIGNAGE PACKAGE) R7-8P; 6" X 12" (TYP.)
D	"DO NOT ENTER" SIGN (SEE SIGNAGE PACKAGE) R5-1; 24" X 24" (TYP.)
E	STOP SIGN (SEE SIGNAGE PACKAGE) R1-1; 30" X 30" (TYP.)
F	CFA PEDESTRIAN CROSSING SIGN (SEE SIGNAGE PACKAGE)
G	FLAG POLE (SEE SIGNAGE PACKAGE)
H	CFA MONUMENT OR PYLON SIGN
I	DIGITAL DRIVE-THRU MENU BOARDS
J	"ONE WAY" SIGN (SEE SIGN PACKAGE)

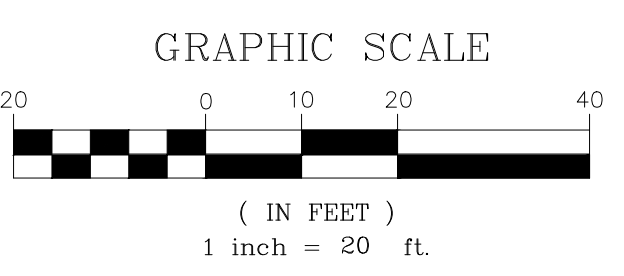


**SITE PLAN DESIGN NOTES & KEY PLAN**

- 1A DIRECTIONAL ARROW (C-4.0)
- 1B PAINTED HANDICAP PARKING SYMBOL (C-4.0)
- 2A DRIVE-THRU GRAPHICS (C-4.0)
- 2B STOP BAR GRAPHIC (C-4.0)
- 3 CROSSWALK MARKINGS (C-4.0)
- 4 MULTI-LANE DIRECTIONAL GRAPHICS (C-4.0)
- 5 STANDARD OR HANDICAP PARKING STALL PER CODE (C-4.0)
- 5A 4" SOLID WHITE STRIPING (C-4.0)
- 5B 4" SOLID YELLOW STRIPING (C-4.0)
- 5C 4" SKIP DASH YELLOW STRIPING (C-4.0)
- 6 SOLID PLASTIC WHEEL STOP (C-4.0)
- 7 BOLLARD MOUNTED SIGN (C-4.0)
- 8 CURB RAMP w/ SHORT FLARED SIDES (GRASSED AREAS) (C-4.0)
- 9 CURB RAMP w/ FLARED SIDES (IN SIDEWALK) (C-4.0)
- 10 RETURNED CURB HANDICAP RAMP (C-4.0)
- 11 SIDEWALK ACCESSIBLE RAMP (C-4.1)
- 12 DETECTABLE WARNING DEVICE (C-4.1)
- 13 TYPICAL ADA RAMP & HANDRAIL (C-4.1)
- 14 CONCRETE SIDEWALK (C-4.1)
- 15 CONCRETE SIDEWALK w/ CURB & GUTTER (C-4.1)
- 16 ENTRY DOOR FROST SLAB DETAIL (C-4.1)
- 17 CONCRETE BOLLARD (C-4.1)
- 18 CONCRETE CURB & GUTTER (C-4.1)
- 18A SPILLING CURB & GUTTER (C-4.1)
- 18B CATCHING CURB & GUTTER (C-4.1)
- 18C DEPRESSED SPILLING CURB & GUTTER (C-4.1)
- 18D DEPRESSED CATCHING CURB & GUTTER (C-4.1)
- 18E SPILLING GUTTER SECTION AT ACCESSIBLE RAMP (C-4.1)
- 18F CATCHING GUTTER SECTION AT ACCESSIBLE RAMP (C-4.1)
- 18G MOUNTABLE CURB & GUTTER (C-4.1)

- 19 LANDSCAPE & IRRIGATION PROTECTOR (C-4.3)
- 20 TYPICAL HMAC PAVEMENT SECTION (C-4.2)
- 21 BUTT JOINT (C-4.2)
- 22 CONCRETE PAVEMENT DRIVE-THRU LANE (C-4.2)
- 23 CONCRETE APRON AT TRASH ENCLOSURE (C-4.2)
- 24 PAVEMENT EDGE DETAIL (START & END OF DRIVE-THRU LANES) (C-4.2)
- 25 CONCRETE PAVEMENT SECTIONS (C-4.2)
- 26 TRANSVERSE & LONGITUDINAL CONTRACTION JOINT (C-4.2)
- 27 TRANSVERSE & LONGITUDINAL DOWELED CONSTRUCTION JOINT (C-4.2)
- 28 CONTRACTION JOINT (C-4.2)
- 29 KEYED CONSTRUCTION JOINT (C-4.2)
- 30 LONGITUDINAL BUTT JOINT (C-4.2)
- 31 EXPANSION JOINT (C-4.2)
- 32 DRIVE-THRU PLAN - FLUSH WITH FFE (C-4.3)
- 33 DRIVE-THRU ISOMETRIC (C-4.3)
- 34 DRIVE-THRU ORDER POINT ISLAND (C-4.3)
- 35 MENU BOARD LOOP DETECTION SYSTEM (C-4.3)
- 36 BUILDING DOWNSPOUT CONNECTION (TO SITE DRAINAGE SYSTEM) (C-4.3)
- 37 CANOPY DOWNSPOUT CONNECTION (TO SITE DRAINAGE SYSTEM) (C-4.3)
- 38 SCREENED REFUSE ENCLOSURE (REFER TO ARCH PLANS FOR ADDITIONAL DETAILS) (C-4.3)
- 39 CLEAN-OUT (OUTSIDE OF BUILDING) (C-4.3)
- 40 THICKENED PAVEMENT @ STRUCTURES (C-4.3)
- 41 STORM STRUCTURE WEEP HOLE DETAILS (C-4.3)
- 42 ALUMINUM HANDRAIL (REFER TO ARCH PLANS) (C-4.3)
- 43 DRIVE-THRU CLEARANCE BAR (REFER TO SIGNAGE PACKAGE) (C-4.3)
- 44 GREASE TRAP (C-4.3)
- 45 PROPOSED TRANSFORMER (C-4.3)
- 46 "U" SHAPE BIKE RACK (C-4.3)

- 47 LANDSCAPED AREA
- 48 TYPICAL LOCATION FOR OUTDOOR TABLES (REFER TO ARCH PLANS)
- 49 CONCRETE PAD FOR OPTIONAL CASH STATION
- 50 FREE-STANDING ORDER POINT CANOPY
- 51 FREE-STANDING OUTSIDE MEAL DELIVERY CANOPY



FILE PATH: \\V:\01014 - Chick-fil-A - 01014-01-215 (010) - 0024 - 05654 - Seminole Woods - P14-LE-BN.dwg (P) - 215-581-581.dwg 7/22/2024  
THIS DOCUMENT IS UNPLATTED AND SHOULD BE PRINTED AT 100% SCALE. ANY DIMENSIONS SHOWN ON THIS DRAWING ARE THE GOVERNING DIMENSIONS. THE CONTRACTOR SHALL BE RESPONSIBLE FOR VERIFYING THE DIMENSIONS OF THE EXISTING CONDITIONS AND THE CLIENT FOR WHICH IT WAS PREPARED. REUSE OF ANY INFORMATION FROM THIS DOCUMENT WITHOUT WRITTEN AUTHORIZATION AND ADAPTATION BY BOWMAN CONSULTING SHALL BE WITHOUT LIABILITY TO BOWMAN CONSULTING.