



Key Messages

Southeast Georgia & Northeast Florida

Major Hurricane Milton – Significant Impacts Expected Wed-Thu

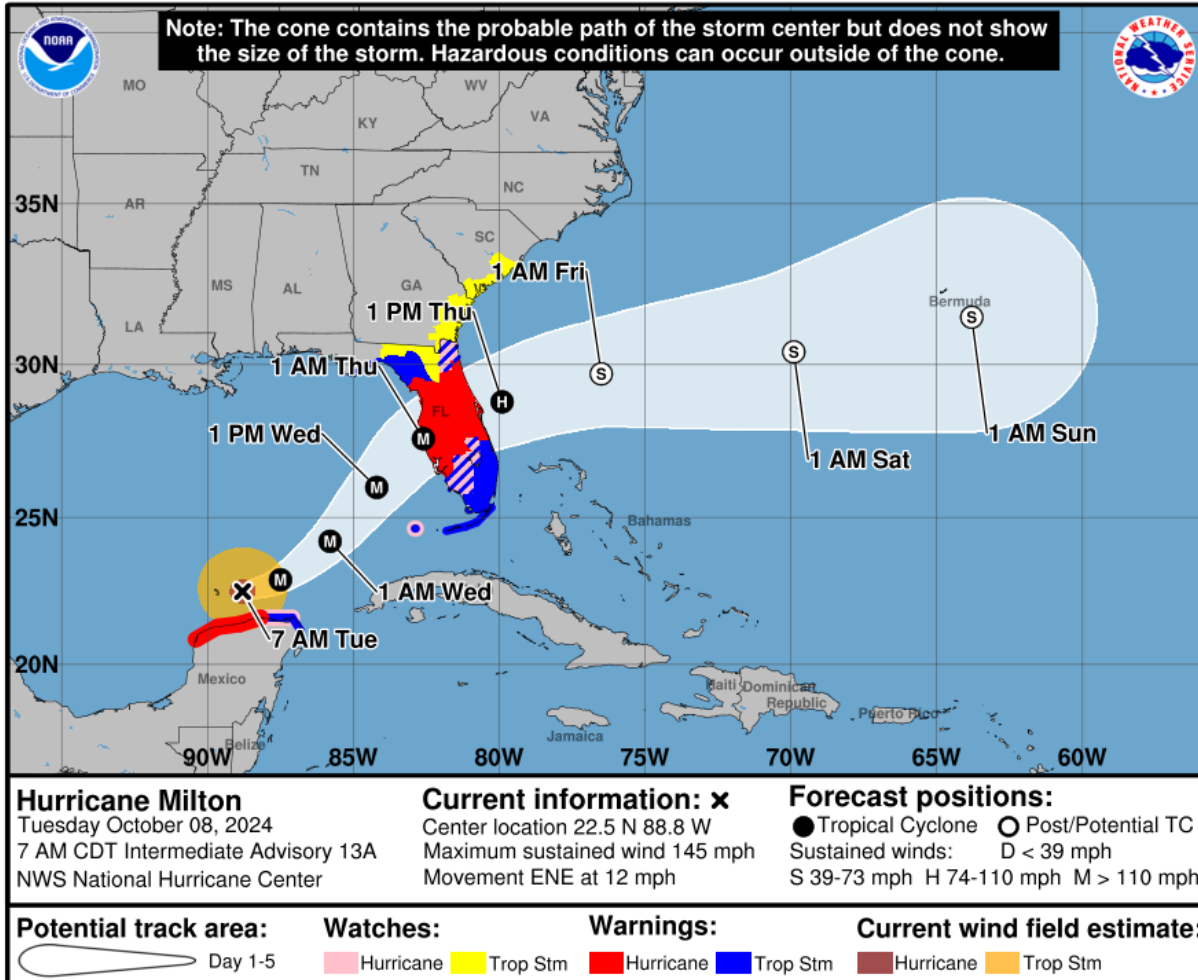
- Deteriorating weather conditions Tonight
- Milton Impacts Increase Wednesday afternoon through Thursday
- Potential hazards: Flooding rainfall, storm surge, damaging winds & river flooding
- Greatest Impact Areas: Northeast FL, Coastal SE GA, Local Marine Waters

Marine & Surf Zone Hazards through the Week

- Gusty onshore winds, waves of localized flooding rainfall & tidal flooding
- Surf Zone: High Rip Current Risk & High, Rough Surf

Major Hurricane Milton

Impact Overview for
Northeast FL & Southeast GA



Key Messages

- Milton will bring life-threatening conditions to FL mid-week.
- Deteriorating weather conditions tonight ahead of Milton.

Local Impacts

- Dangerous beach & marine conditions this week.
- Damaging Wind Risk Wed-Thu
- Storm Surge Flooding Atlantic Coast & St. Johns River Wed-Thu
- Flooding Rainfall Risk NE FL & Coastal SE GA
- River Flooding Risk: NE FL Rivers, prolonged St. Johns Flooding

Safety Recommendations

- Monitor forecasts: <https://www.nhc.noaa.gov/>
- Finalize preparedness actions by this evening.
- Be where you want to shelter by Wednesday morning.
- Heed the guidance of local officials.



NATIONAL WEATHER SERVICE
JACKSONVILLE

ISSUED: Tuesday, October 8, 2024 8:18 AM



Prepare for these Potential Impacts – RISK ASSESSMENT

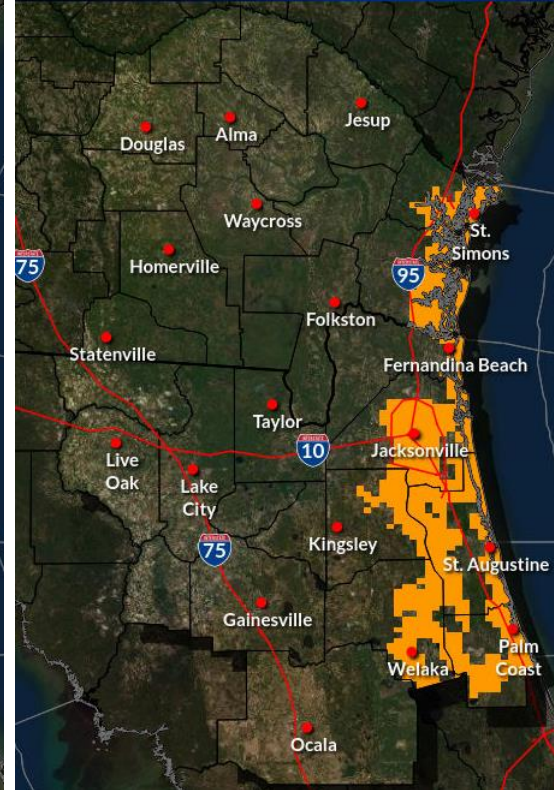
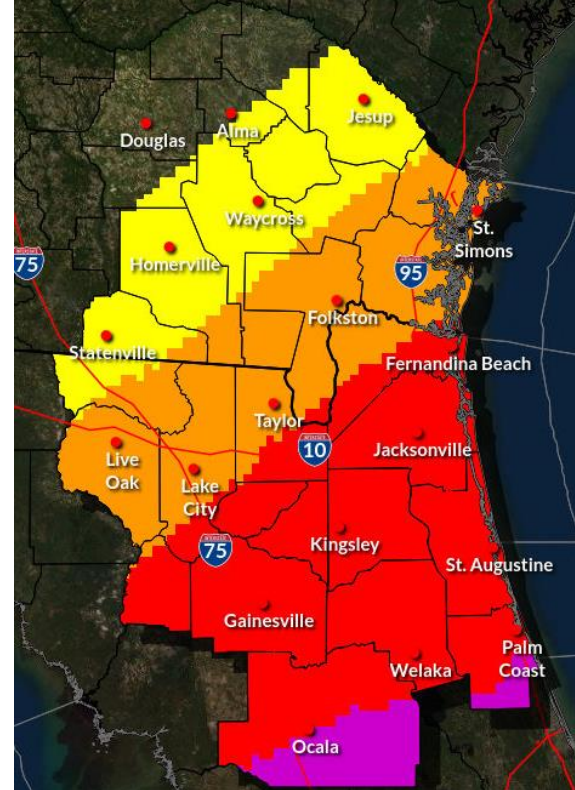
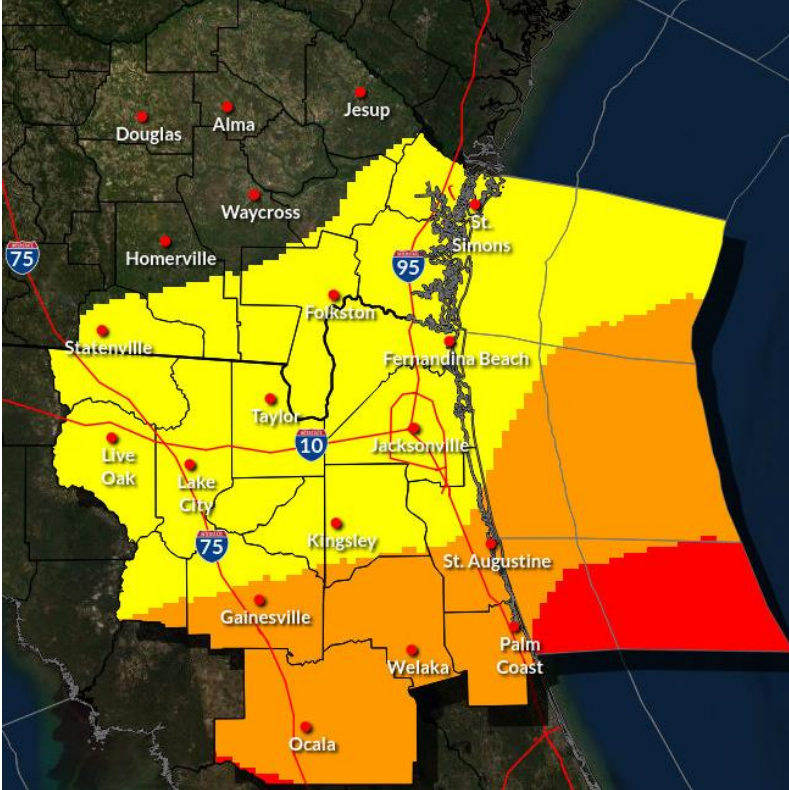
Hurricane Milton

WIND THREAT

RAINFALL THREAT

SURGE THREAT

TORNADO THREAT



More than 110 mph

74 - 110 mph

58 - 73 mph

39 - 57 mph

Less than 39 mph

Extreme Flooding Rain

Major Flooding Rain

Moderate Flooding Rain

Localized Flooding Rain

Little to No Flooding Rain

Surge 9 ft or more above ground

Surge 6 ft or more above ground

Surge 3 ft or more above ground

Surge 1 ft or more above ground

Little to No Storm Surge

Tornado Outbreak

Many Tornadoes

Several Tornadoes

Few Tornadoes

Tornadoes not expected

Hurricane & Tropical Storm Wind Threat

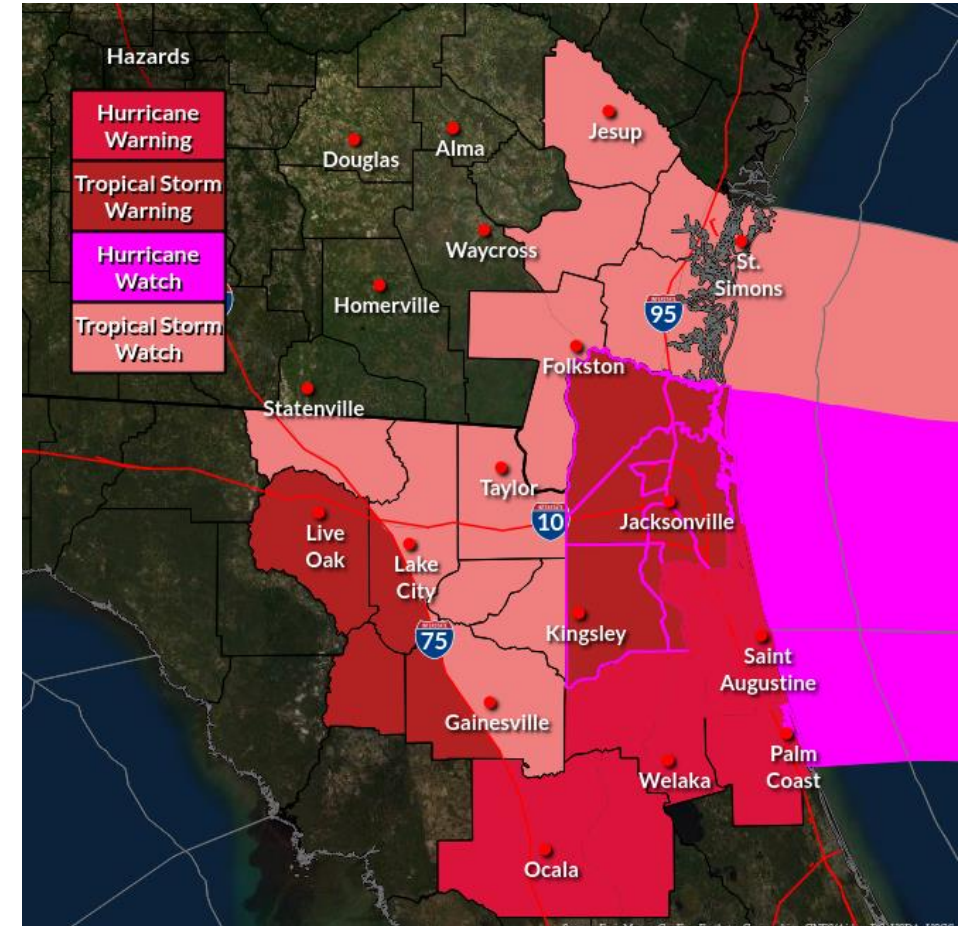
Key Message & Timing



- **Hurricane Watches/Warnings & Tropical Storm Watches/Warnings NE FL & portions of SE GA**
- Peak winds Wednesday Night through Thursday
- Watches = Potential for these winds within 48 hrs
- Warning = Winds Expected within 36 hrs

Potential Impacts

- Widespread downed trees & powerlines, power outages & damage to structures & mobile homes.
- Most vulnerable areas:
Suwannee Valley, Marion County & coastal NE FL.
- Saturated ground will cause trees to fall more easily.

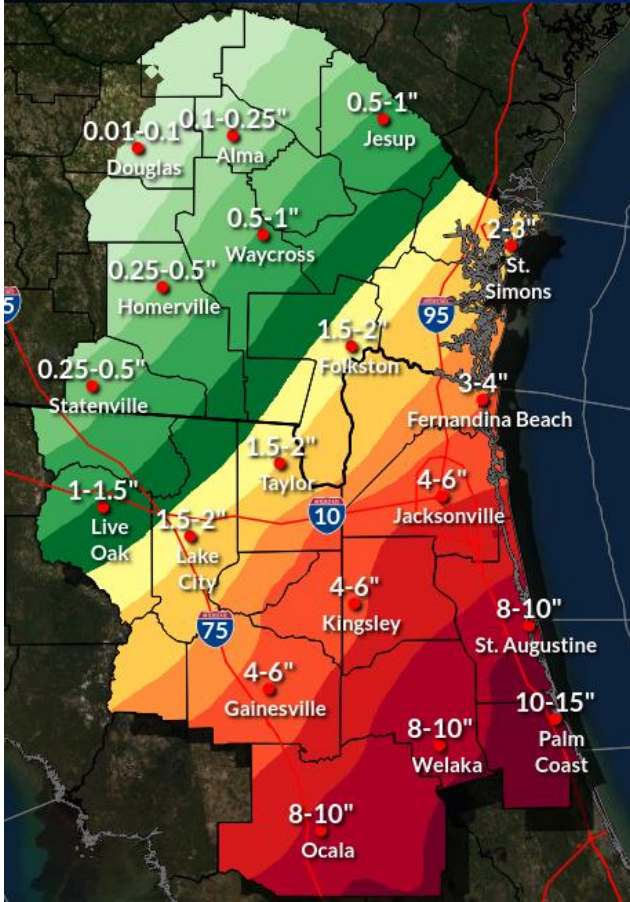


Flooding Rain Threat

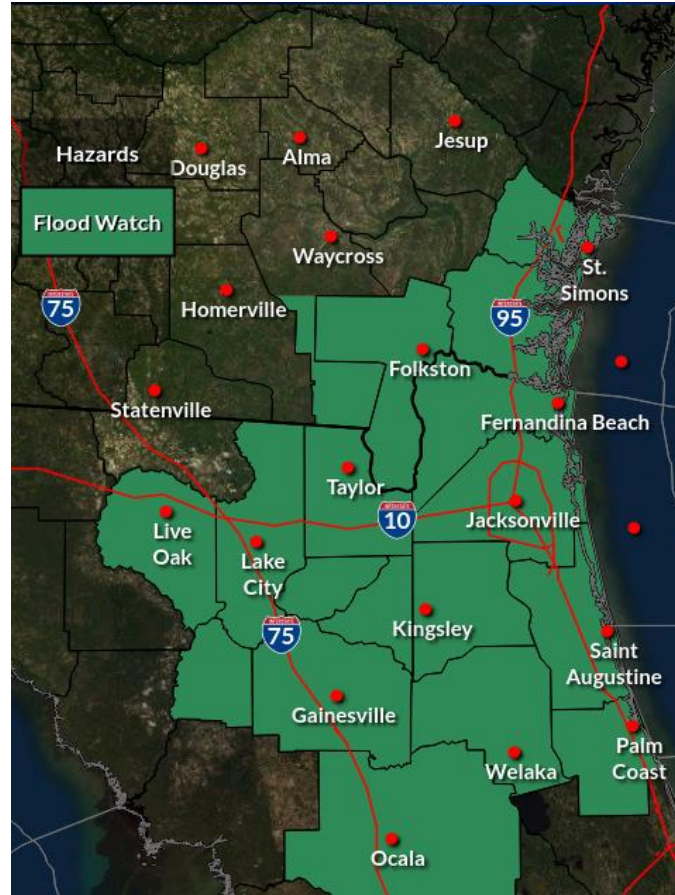
TURN AROUND
DON'T DROWN!



Storm Total Rainfall Forecast Today through Thu Night



Flash Flood Watch



Key Message & Timing

- Periods of heavy rainfall increase through tonight ahead of Milton.
- The most widespread rainfall is expected Wednesday through Thursday
- Areas in the flood watch have the greatest risk of flash flooding

Potential Impact

- Flash flooding of urban, low-lying, coastal & poor drainage areas

Recommended Actions

- If in a flood prone area, move to higher ground
- Secure vulnerable objects from flood water



NATIONAL WEATHER SERVICE JACKSONVILLE

Follow: @NWSJacksonville

ISSUED: Tuesday, October 8, 2024 8:18 AM

Storm Surge Threat

Key Messages & Timing

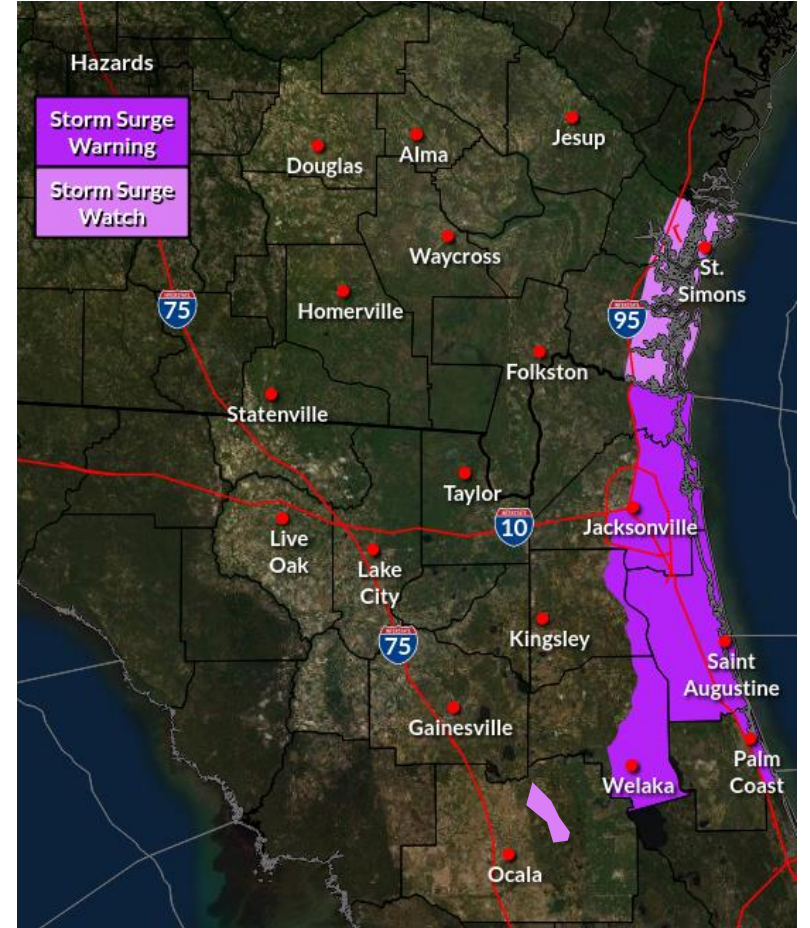


- Minor Tidal Flooding around High Tides Today
- **Potential for Life-Threatening Storm Surge Inundation Late Wednesday & Thursday**
- **Storm Surge Inundation 3-5 FT Coasts & Intracoastal Waterway 2-4 FT for St. Johns River Basin to Lake Georgia & Crescent Lake**
- Extended duration St. Johns Basin River Flooding likely given heavy rainfall across central FL (headwaters)

Actions



- Know your storm surge zone
- Follow evacuation order of local official
- Never drive through flood waters
- Move vulnerable property to higher ground

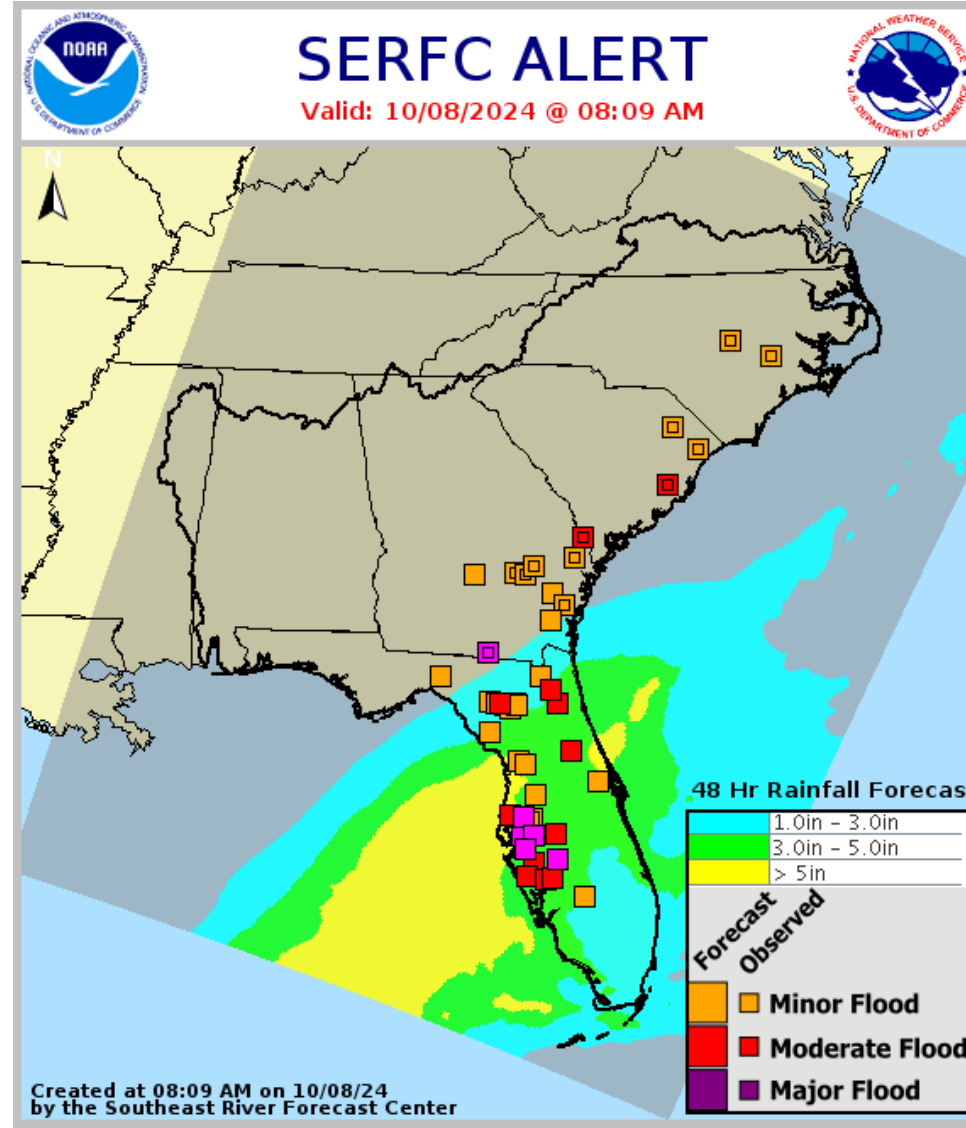
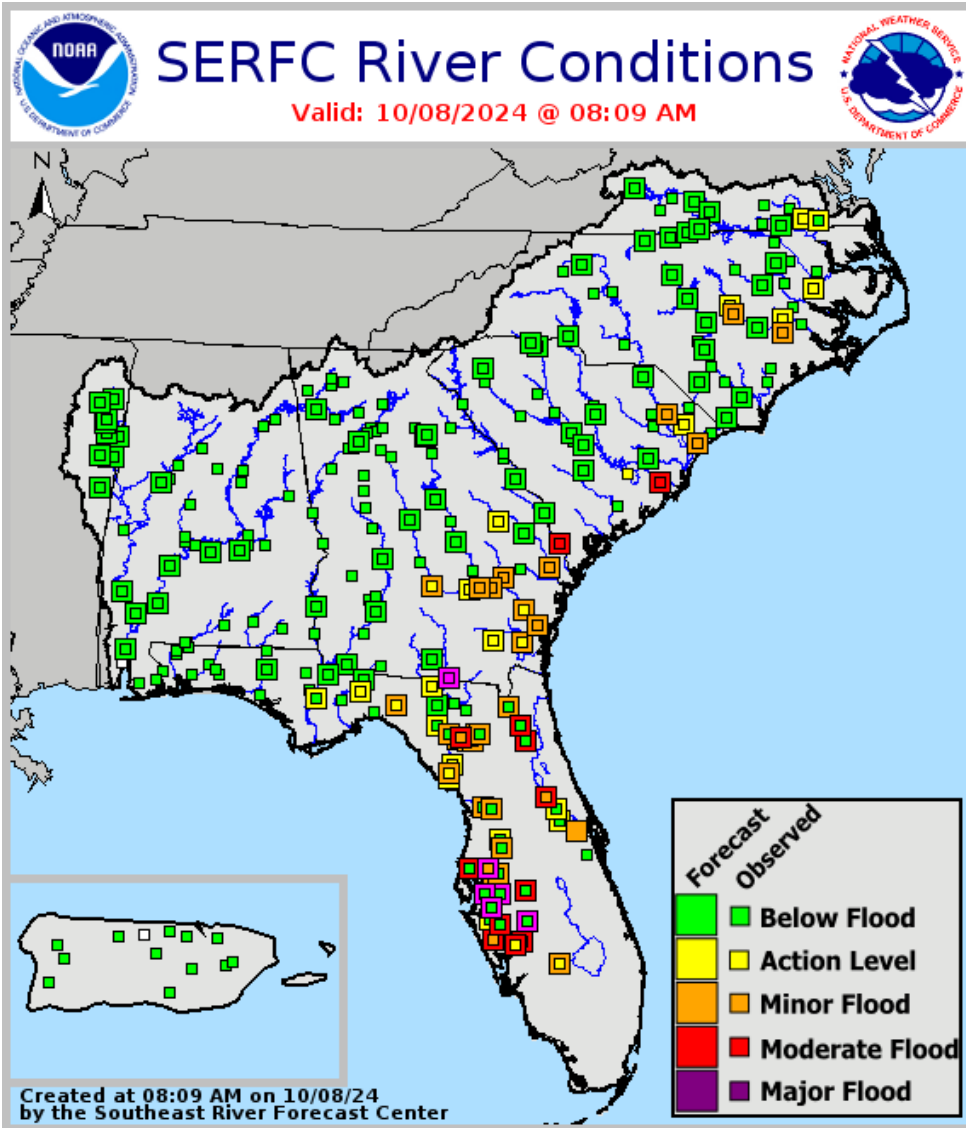




River Flooding Status & Forecast

Southeast Georgia & Northeast Florida Rivers

<https://water.noaa.gov/?wfo=jax>





Get Moving When a Storm Threatens



Protect your home: cover windows, secure doors & loose items



Determine sheltering options and consider your pets



Ready your go-bag, meds & supplies, charge phone, fill up/charge vehicle



Help your neighbors, especially the elderly & other vulnerable people



Follow evacuation orders if given

**FINALIZE
PREPARATIONS
TODAY**

