

## **THE TRIBUTE APARTMENT HOMES**

---

# MASTER SITE PLAN



# MASTER SITE PLAN



# MASTER SITE PLAN



---

# INSPIRATION

---



# ELEVATIONS

- 4-Story



- 3-Story



---

## UNIT MIX

---

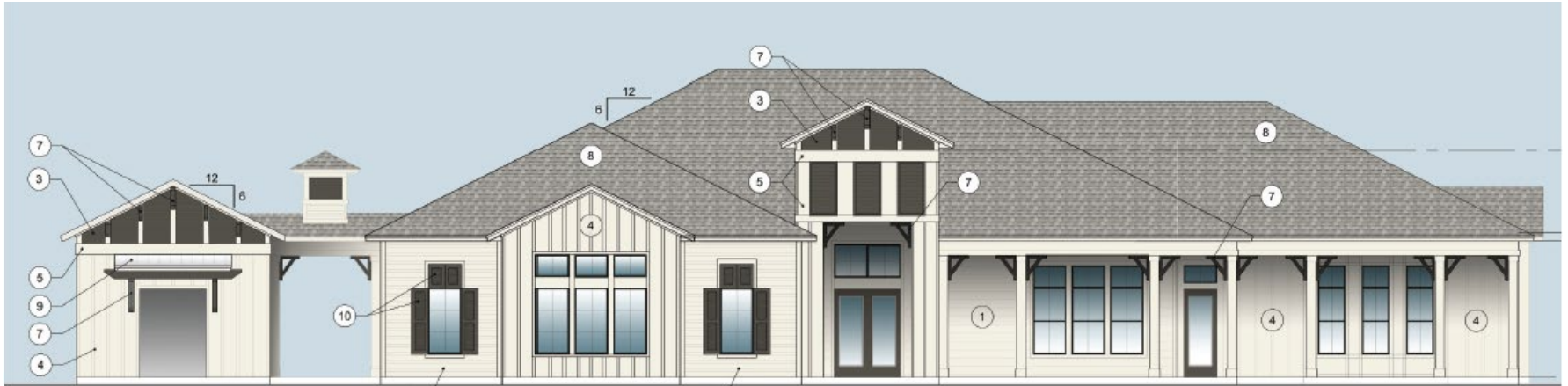
Unit Type	Units	Sq Ft Per Unit	Per Unit Type %	1, 2, & 3 Unit %
1B / 1b	31	777	12.6%	
1B / 1b Den	46	957	18.7%	31.3%
2B / 2b	100	1,082	40.7%	
2B / 2b	46	1,159	18.7%	59.3%
3B / 2b	23	1,308	9.3%	9.3%
<b>Totals</b>	<b>246</b>		<b>100.0%</b>	<b>100.0%</b>

---

# ELEVATIONS

---

- Clubhouse



- Garages





---

# AMENITIES

---

- The Tribute amenities enhance the resident experience with a focus on the outdoor Florida lifestyle
  - Gated Access
  - Oversized Resort Style Pool
  - Neighborhood "Beachfront" Gathering Area
  - Summer Kitchen
  - Pier Leading to Gazebo over the Lake
  - Main Clubhouse
  - Amazon Package Room
  - Oversized Dog Parks
  - Fully Equipped Gymnasium
  - Car Charging Stations
  - Private Garages
  - Walking / Biking Trails
  - Preservation of Historic Old Kings Road



# AMENITIES



# INTERIORS

The apartment homes provide residents a modern getaway with open floor plans, chef- inspired kitchens and luxury finishes.

- Quartz Countertops
- Stainless Steel Appliances
- Classic Shaker Cabinets
- Vinyl Plank Flooring
- 9' Ceilings
- Walk-in Showers and Bathtubs
- Oversized Walk-in Closets
- Balconies and Patios



---

# LUSH LANDSCAPING

---

- The Tribute will feature lush landscaping designed to accentuate the Old Florida theme

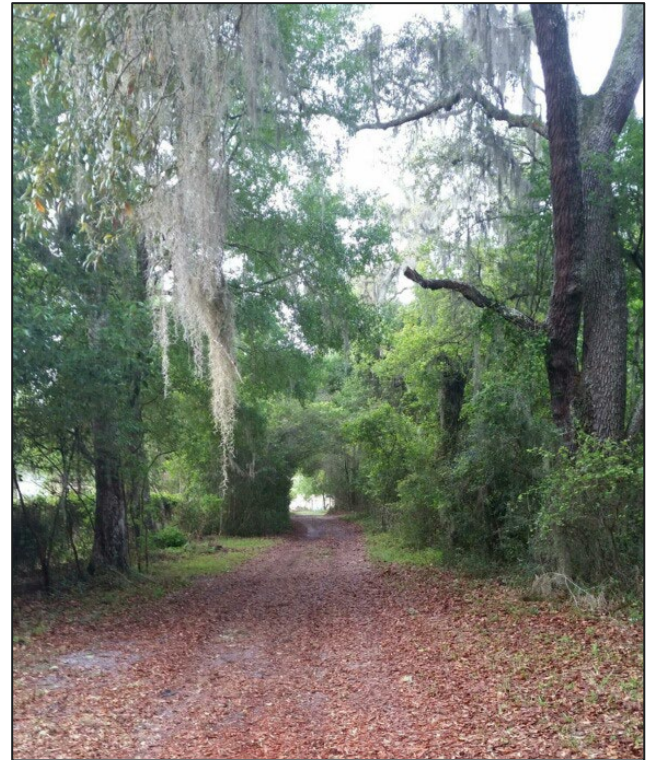


---

# HISTORY – OLD KINGS ROAD

---

- Essentially the first “Interstate Highway” in America
- Built in the early 1770’s
- Major infrastructure project of the British Crown in their greatest attempt to colonize the New World.
- British Redcoats marched down this road



---

# HISTORY – OLD KINGS ROAD

---

- Important element of The Tribute Project is to preserve and integrate this significant historical resource into the development
- Kiosk with historical facts and walking/biking trail along western edge of project

