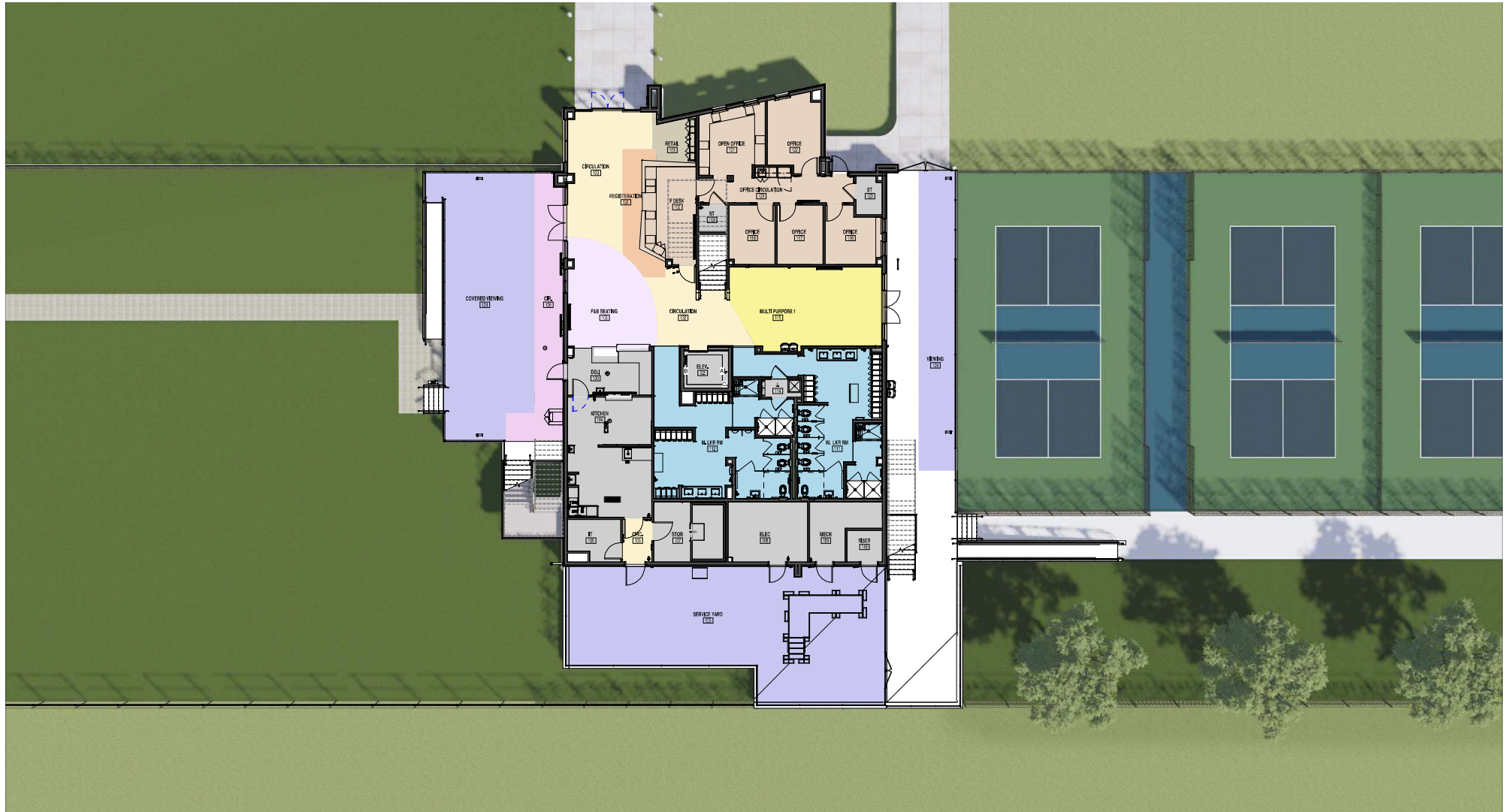


**CITY OF PALM COAST  
SOUTHERN RECREATION CENTER**



# CITY OF PALM COAST SOUTHERN RECREATION CENTER



## FIRST FLOOR PLAN

# CITY OF PALM COAST SOUTHERN RECREATION CENTER



## SECOND FLOOR PLAN

Status: 10/15/2014

Scale: 1/8" = 1'-0"  
 Date: 10/15/14  
 Project: 14-0001  
 Title: SECOND FLOOR PLAN  
 Author: J. L. [unreadable]  
 Check: J. L. [unreadable]  
 Date: 10/15/14  
 Sheet: 2 of 102  
 © 2014 J.L.C.

**CITY OF PALM COAST  
SOUTHERN RECREATION CENTER**

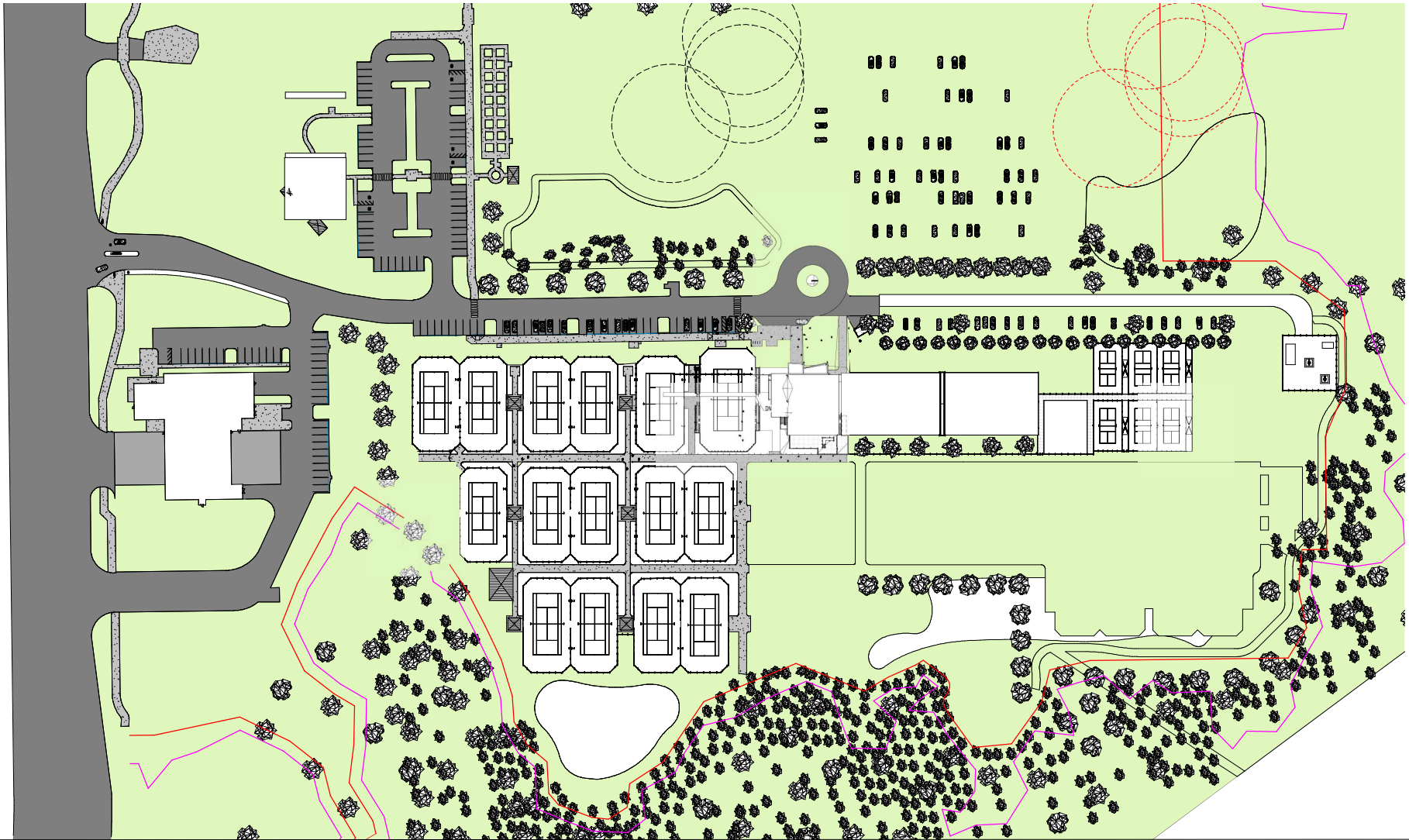


**MASTER PLAN**

FOR REFERENCE ONLY

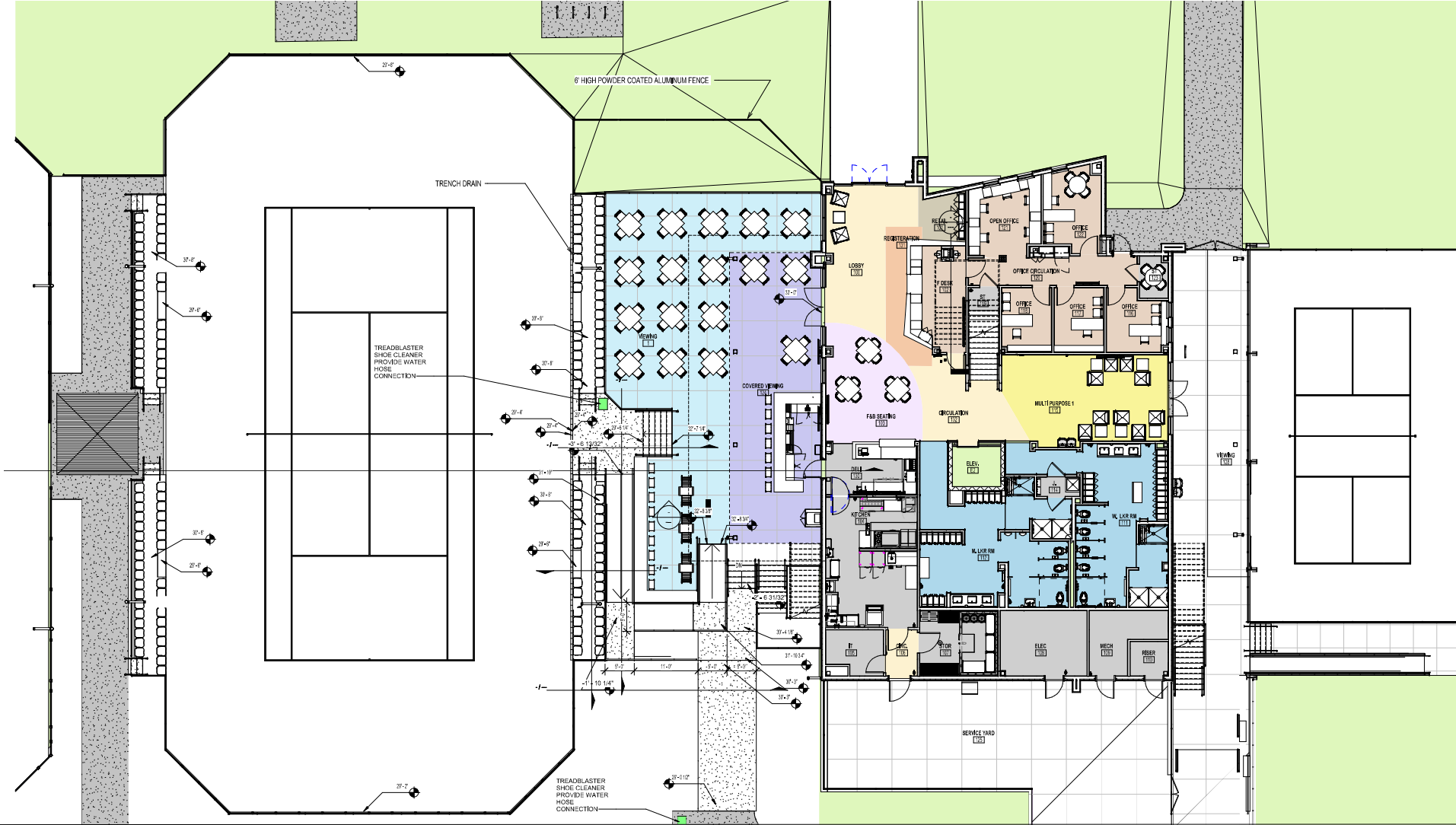
CITY OF PALM COAST MASTER PLAN  
© 2011

# CITY OF PALM COAST SOUTHERN RECREATION CENTER



PHASE 2A

# CITY OF PALM COAST SOUTHERN RECREATION CENTER



## STADIUM COURT

Site Plan Phase 2 stadium  
1/8" = 1'

**CITY OF PALM COAST  
SOUTHERN RECREATION CENTER**



**VIEW SOUTHEAST**

**CITY OF PALM COAST  
SOUTHERN RECREATION CENTER**



**VIEW SOUTHWEST**



# CITY OF PALM COAST SOUTHERN RECREATION CENTER

**HEAT ISLAND REDUCTION**  
With the use of light-colored concrete & paving and roof top materials with high reflectance values the project helped to minimize its heat island effect on the surrounding area.



**LOW FLOW TOILETS AND FIXTURE**  
With high efficiency fixtures and fittings, the project is saving 38% potable water from the baseline. That's a savings of 33,000 gallons per year.



**FUNDAMENTAL SYSTEMS MANAGEMENT**  
The equipment installed on the project contains no CFCs. This helps to reduce the stratospheric ozone depletion.



**HIGH EFFICIENCY GLAZING**  
Glazing used for the exterior storefront windows is insulated, tinted, tempered glazing with Low-e coating providing a 0.24 Solar Heat Gain Coefficient (SHGC), 18% Total Solar Transmittance), 26 Daytime U-Value.



**LED LIGHTING**  
The project has installed all LED lamps and has made a commitment to replace spent bulbs with LED lamps.



**ENVIRONMENTAL TOBACCO SMOKE CONTROL**  
For the health and protection of building occupants and visitors, the project does not allow smoking within 25 feet of all building entrances.



**OUTDOOR WATER USE**  
With proper plant choices and use of reclaimed water, the project was able to reduce its use of potable water by 64% from the baseline. This water savings is enough to fill 6 Olympic-sized swimming pools in 1 year.



**SOLAR PANELS**  
201,475 Watt Solar Modules producing approximately 590,223 kWh per year.



**THERMAL COMFORT & INTERIOR LIGHTING**  
By providing employees with adjustable thermostats and task lighting with fans, they have control over their thermal comfort and task.



**STORAGE & COLLECTION OF RECYCLABLES**  
The project is equipped with recyclable containers for use by employees and visitors, helping to reduce.



**EV CHARGER**  
Over 5% of the project's parking spaces are equipped with electrical vehicle supply equipment for the convenience and use of our employees and visitors.



**BICYCLE FACILITIES**  
Providing short term and long-term bicycle storage for visitors and employees.



ELEMENTS OF SUSTAINABILITY

# CITY OF PALM COAST SOUTHERN RECREATION CENTER

## **Bicycle Facilities**

- Providing short term and long-term bicycle storage for visitors and employees

## **Green Vehicles**

- Over 5% of the project's parking spaces are equipped with electrical vehicle supply equipment for the convenience and use of our employees and visitors.

## **Construction Activity Pollution Prevention**

- The project put in place an erosion and sedimentation control system that prevented pollution of stormwater drains by keeping sediment from entering runoff water. With silt fencing and use of water trucks (when needed), dust and particulates were prevented from entering the atmosphere.

## **Heat Island Reduction**

- With the use of light-colored concrete & paving and roof top materials with high reflectance values the project helped to minimize its heat island effect on the surrounding area.

## **Outdoor Water Use**

- With proper plant choices and use of reclaimed water, the project was able to reduce its use of potable water by 64% from the baseline. This water savings is enough to fill 6 Olympic-sized swimming pools in 1 year. Or it is enough to provide daily drinking water to 9500 people per year.

## **Indoor Water Use**

- With high efficiency fixtures and fittings, the project is saving 38% potable water from the baseline. That's a savings of 33,000 gallons per year.

## **Optimize Energy Performance (EP)**

- Based on the project's design coupled with photo voltaic panels, the project realized a total energy cost savings of 84.9% from the baseline.

## **Fundamental Refrigerant Management**

- The equipment installed on the project contains no CFCs (chlorofluorocarbon). This helps to reduce the stratospheric ozone depletion.

## **Renewable Energy Production**

- 201, 475 watt on-site solar modules producing approximately 590,223 kBtu per year. A little over 76% of the entire site's energy comes from the solar panels.

## **Storage and Collection of Recyclables**

- The project is equipped with recyclable containers for use by employees and visitors, helping to reduce waste going to the landfill.

## **Environmental Tobacco Smoke Control**

- For the health and protection of building occupants and visitors, the project does not allow smoking within 25 feet of all building entrances.

## **Thermal Comfort & Interior Lighting**

- By providing employees with adjustable thermostats and task lighting with fans, they have control over their thermal comfort and task lighting.

## **All LED Lamps**

- The project has installed all LED lamps and has made a commitment to replace spent bulbs with LED lamps. This prevents mercury containing lamps from entering the premises which will protect the health and human safety of occupants and will help to maintain our energy savings.

## **Building Products**

- The project strives to install products that have the following attributes
  - Environmental Product Declarations
  - Responsible Sourcing of Raw Materials (i.e., Recycled Content, etc.)
  - Material Ingredients
    - Products labeled Cradle to Cradle, Declare, Health Product Declaration, etc.
- Low-emitting materials that document low VOC content and have VOC emissions evaluations. This helps to protect the health, productivity, and comfort of installers and building occupants by reducing concentrations of chemical contaminants that can damage air quality and the environment,
  - Paints and Coatings
  - Adhesives and Sealants
  - Flooring
  - Wall Panels
  - Ceilings
  - Insulation
  - Composite Wood



**SUSTAINABILITY DATA**