



EMERGENCY MANAGEMENT

Hurricane Season Media Roundtable

2025

Flagler County Emergency Management

www.FlaglerCounty.gov/emergency

EOC@FlaglerCounty.gov - 386.313.4200



Hurricane Season - Overview



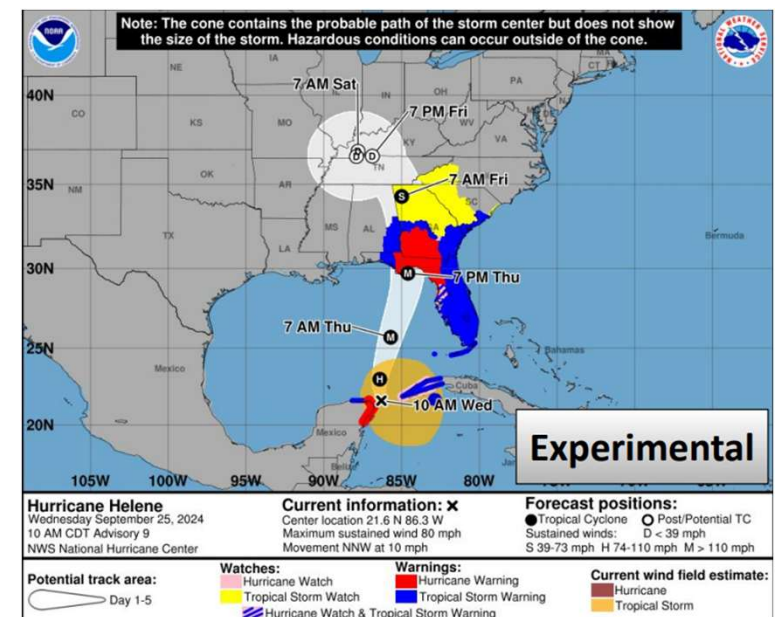
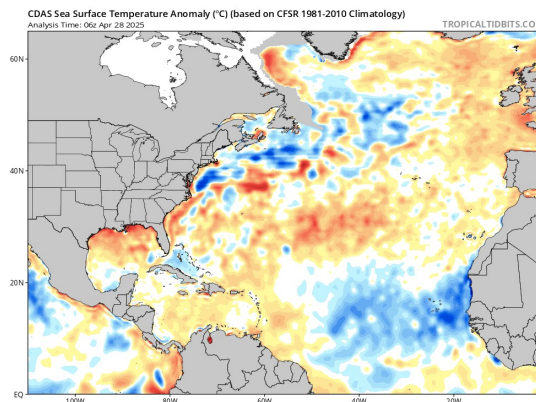
2025	30 Yr Avg	CSU 4/25	NHC 5/22	CSU 8/25	NHC 8/25
Named Storms	14	17	13-19		
Hurricanes	7	9	6-10		
Major Hurricanes	3	4	3-5		

June 1st to November 30th

- Storms occur outside of “season”
- 96% of major Hurricanes Mid-Aug to Mid-Oct
- 18 Named Storms in 2024
- Cone (2/3) is slightly more precise / smaller (2025)
 - Inland Watches & Warnings (2024)

What impacts the formation?

- Sea Surface Temps Above Normal, but Cooler than Last Year (80°F+)
- La Nina (cooler Pacific = less wind sheer) → Neutral → ??
- Saharan Dust – Volcano Ash (Wind Sheer, Convection, Sea Surface Temps)



Hurricane Season - Names (Atlantic 2025)

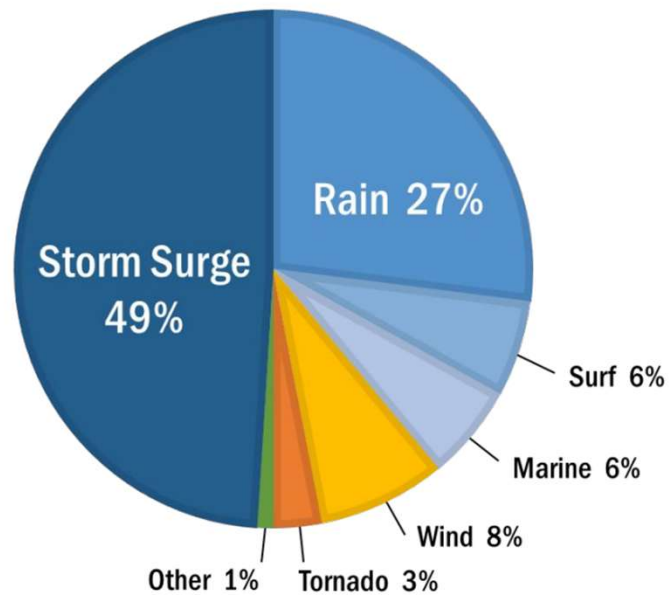


Andrea	Humberto	Olga
Barry	Imelda	Pablo
Chantal	Jerry	Rebekah
Dexter	Karen	Sebastien
Erin	Lorenzo	Tanya
Fernand	Melissa	Van
Gabrielle	Nestor	Wendy

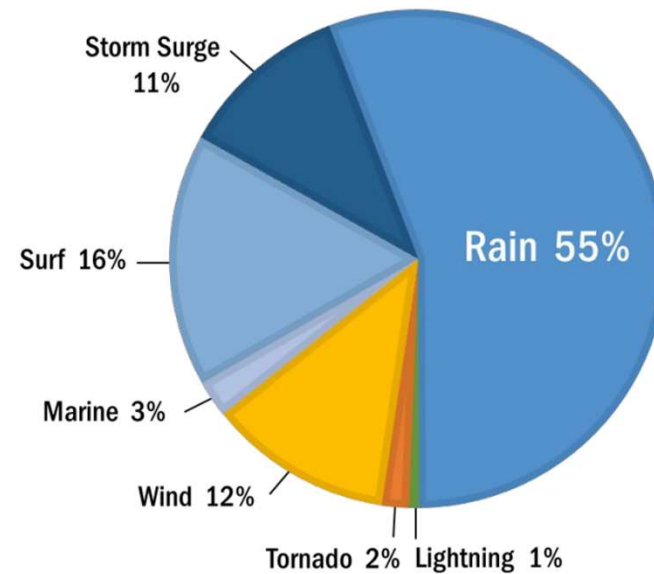
Hurricane Season - Risks

U.S. Direct Fatalities from Tropical Cyclones

1963 to 2012



2013 to 2023



2024 Review → 2025 Updates



Volunteers: 31 (incl 4 interns)

- 4241 Service Hours in FY24 > \$140,000

EOC / EM Staff Response

- Hurricane Debby (August) - Columbia
- Hurricane Helene (September) - Dixie
- Hurricane Milton (October) – Flagler

Full Scale Exercise at FPC High School



Updates

- New Website
 - Potential Evacuation Zone Look-up
 - Live Evacuation Zone
- Weather Radar: In-progress
 - Working to incorporated into NWS systems

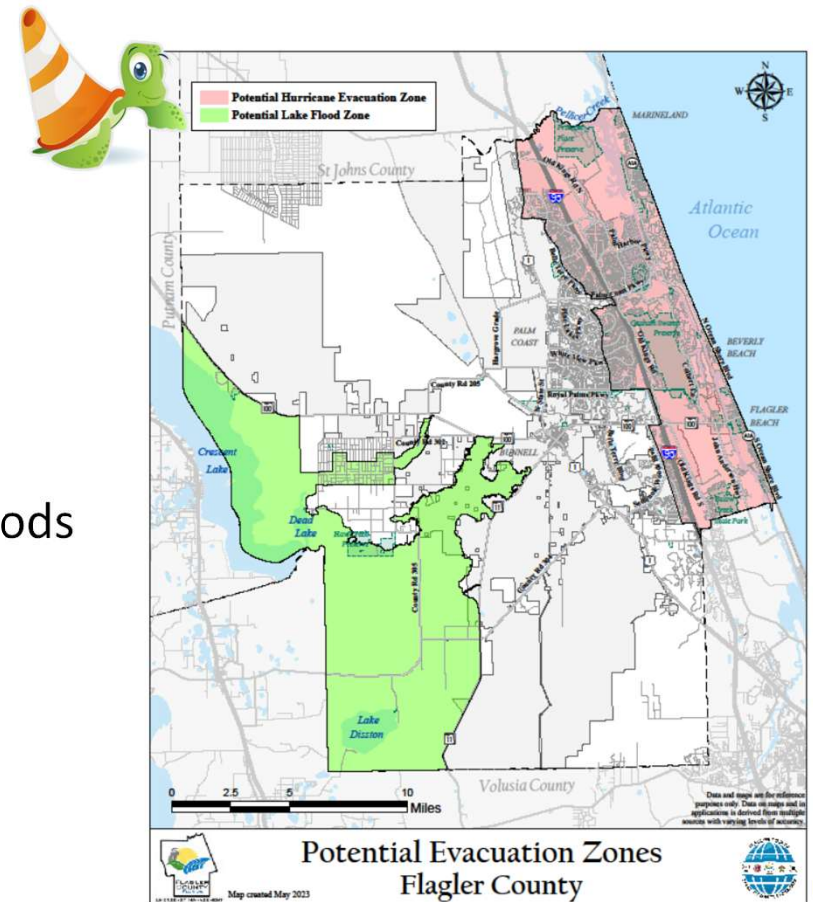
Federal Changes

- Not 100% sure yet, have some suspicions

Hurricane Season - Evacuations



- Generally, evacuate for storm surge
 - + Mobile Home & Low-lying areas exception
- Our new Zones have been much easier to communicate
 - Potential Hurricane Evacuation Zone
 - Potential Lake Flood Zone
 - Evacuation orders will be issued by neighborhoods
 - New web map to show neighborhoods (2025)
- Bridge Closures
 - Generally, won't "close" bridges
 - Will message when not safe to be on the road



Hurricane Season - Sheltering



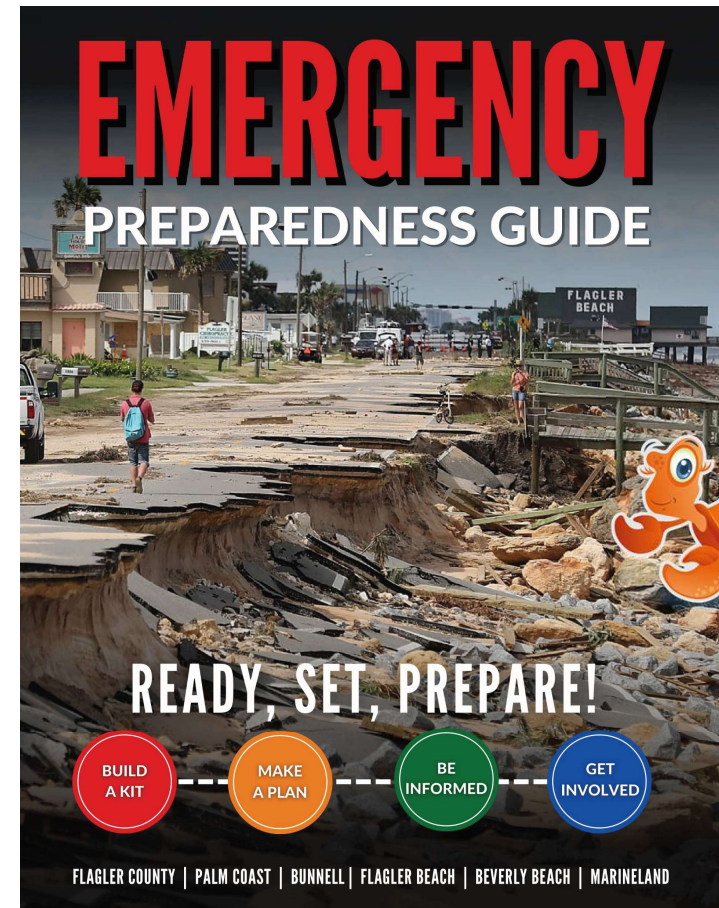
- Shelters are a last resort – have multiple plans.
- Continue our partnership with Flagler Schools and Florida Health in Flagler (special needs)
- Continue our partnership with Flagler Volunteer Services to train community volunteers to support shelters
- Expansion of non-school based options
 - Community Centers (not during Hurricanes)
 - Fairgrounds Exhibit Hall – will become primary



Hurricane Season - Messaging



- Build a Kit
 - 1 week being off-the-grid
- Make a Plan
 - How / who will prepare home
 - Where will you go if evacuated
 - How will you communicate
 - Special Needs
- Be Informed
 - **ALERT**Flagler
 - Media Partnerships!
 - How to contact us
- Get Involved
 - Community Emergency Response Team





THANK YOU

Are there any questions?

Flagler County Emergency Management
www.FlaglerCounty.gov/emergency
EOC@FlaglerCounty.gov - 386.313.4200