

# **Florida Demographic Estimating Conference**

**Tables**  
Conference Packet

July 8, 2019

# Florida Resident Population

April 1

Year	Florida Demographic Estimating Conference February 2019			Florida Demographic Estimating Conference July 2019			
	Population	% Change	Change	Population	% Change	Change	
2000	15,982,824	2.58%	402,580	15,982,824	2.58%	402,580	
2001	16,305,100	2.02%	322,276	16,305,100	2.02%	322,276	
2002	16,634,256	2.02%	329,156	16,634,256	2.02%	329,156	
2003	16,979,706	2.08%	345,450	16,979,706	2.08%	345,450	
2004	17,374,824	2.33%	395,118	17,374,824	2.33%	395,118	
2005	17,778,156	2.32%	403,332	17,778,156	2.32%	403,332	
2006	18,154,475	2.12%	376,319	18,154,475	2.12%	376,319	
2007	18,446,768	1.61%	292,293	18,446,768	1.61%	292,293	
2008	18,613,905	0.91%	167,137	18,613,905	0.91%	167,137	
2009	18,687,425	0.39%	73,520	18,687,425	0.39%	73,520	
2010	18,801,332	0.61%	113,907	18,801,332	0.61%	113,907	
2011	18,905,070	0.55%	103,738	18,905,070	0.55%	103,738	
2012	19,074,434	0.90%	169,364	19,074,434	0.90%	169,364	
2013	19,259,543	0.97%	185,109	19,259,543	0.97%	185,109	
2014	19,507,369	1.29%	247,826	19,507,369	1.29%	247,826	
2015	19,815,183	1.58%	307,814	19,815,183	1.58%	307,814	
2016	20,148,654	1.68%	333,471	20,148,654	1.68%	333,471	
2017	20,484,142	1.67%	335,488	20,484,142	1.67%	335,488	
2018	20,840,568	1.74%	356,426	20,840,568	1.74%	356,426	
Begins forecast							
2019	21,184,532	1.65%	343,964	21,200,796	1.73%	360,228	
2020	21,517,610	1.57%	333,078	21,546,885	1.63%	346,089	
2021	21,842,151	1.51%	324,541	21,881,835	1.55%	334,950	
2022	22,158,870	1.45%	316,719	22,206,881	1.49%	325,046	
2023	22,466,893	1.39%	308,023	22,521,566	1.42%	314,685	
2024	22,764,194	1.32%	297,301	22,824,196	1.34%	302,630	
			5-Year Averages				5-Year Averages
2025	23,050,820	1.39%	306,642	23,115,024	1.41%	313,628	
2030	24,340,457	1.09%	257,927	24,408,513	1.09%	258,698	
2035	25,429,340	0.88%	217,777	25,488,114	0.87%	215,920	
2040	26,373,603	0.73%	188,853	26,424,424	0.72%	187,262	
2045	27,219,985	0.63%	169,276	27,265,701	0.63%	168,255	

# Florida Resident Households

April 1

Year	Florida Demographic Estimating Conference February 2019			Florida Demographic Estimating Conference July 2019			
	Households	% Change	Change	Households	% Change	Change	
2000	6,338,075	2.52%	155,729	6,338,075	2.65%	163,703	
2001	6,467,215	2.04%	129,140	6,460,934	1.94%	122,859	
2002	6,599,035	2.04%	131,820	6,586,806	1.95%	125,872	
2003	6,737,370	2.10%	138,335	6,719,399	2.01%	132,593	
2004	6,895,469	2.35%	158,099	6,872,318	2.28%	152,919	
2005	7,056,889	2.34%	161,420	7,029,787	2.29%	157,469	
2006	7,207,645	2.14%	150,756	7,178,486	2.12%	148,699	
2007	7,312,907	1.46%	105,262	7,292,550	1.59%	114,064	
2008	7,368,319	0.76%	55,412	7,354,880	0.85%	62,330	
2009	7,386,570	0.25%	18,251	7,379,964	0.34%	25,084	
2010	7,525,335	1.88%	138,765	7,420,802	0.55%	40,838	
2011	7,456,791	-0.91%	-68,544	7,456,791	0.48%	35,989	
2012	7,525,335	0.92%	68,544	7,525,335	0.92%	68,544	
2013	7,602,417	1.02%	77,082	7,602,417	1.02%	77,082	
2014	7,708,538	1.40%	106,121	7,708,538	1.40%	106,121	
2015	7,840,780	1.72%	132,242	7,840,780	1.72%	132,242	
2016	7,982,938	1.81%	142,158	7,982,938	1.81%	142,158	
2017	8,125,176	1.78%	142,238	8,125,176	1.78%	142,238	
2018	8,271,058	1.80%	145,882	8,271,058	1.80%	145,882	
Begins forecast							
2019	8,416,658	1.76%	145,600	8,423,120	1.84%	152,062	
2020	8,558,104	1.68%	141,446	8,569,747	1.74%	146,627	
2021	8,699,034	1.65%	140,930	8,714,038	1.68%	144,291	
2022	8,837,951	1.60%	138,917	8,856,556	1.64%	142,518	
2023	8,973,363	1.53%	135,412	8,997,192	1.59%	140,636	
2024	9,108,523	1.51%	135,160	9,135,335	1.54%	138,143	
			5-Year Averages				5-Year Averages
2025	9,244,463	1.55%	137,272	9,274,234	1.59%	140,897	
2030	9,884,007	1.35%	127,909	9,941,867	1.40%	133,527	
2035	10,438,083	1.10%	110,815	10,491,968	1.08%	110,020	
2040	10,883,349	0.84%	89,053	10,930,545	0.82%	87,715	
2045	11,247,107	0.66%	72,752	11,289,758	0.65%	71,843	

Note: Household series has been revised from 2001 forward.

	<u>2010-2</u>	<u>2010-3</u>	<u>2010-4</u>	<u>2011-1</u>	<u>2011-2</u>	<u>2011-3</u>	<u>2011-4</u>	<u>2012-1</u>	<u>2012-2</u>	<u>2012-3</u>	<u>2012-4</u>	<u>2013-1</u>	<u>2013-2</u>	<u>2013-3</u>
<b>Population</b>														
FDEC, February 2019	18,813.9	18,838.3	18,862.7	18,890.2	18,923.4	18,962.8	19,006.3	19,051.6	19,096.7	19,141.2	19,186.6	19,234.6	19,286.9	19,344.2
FDEC, July 2019	18,813.9	18,838.3	18,862.7	18,890.2	18,923.4	18,962.8	19,006.3	19,051.6	19,096.7	19,141.2	19,186.6	19,234.6	19,286.9	19,344.2
<b>Population Growth Rate</b>														
FDEC, February 2019	0.59	0.52	0.52	0.58	0.71	0.83	0.92	0.96	0.95	0.94	0.95	1.01	1.09	1.19
FDEC, July 2019	0.59	0.52	0.52	0.58	0.71	0.83	0.92	0.96	0.95	0.94	0.95	1.01	1.09	1.19
<b>Net Change in Population</b>														
FDEC, February 2019	27.9	24.4	24.4	27.5	33.2	39.4	43.5	45.3	45.1	44.5	45.4	48.0	52.3	57.3
FDEC, July 2019	27.9	24.4	24.4	27.5	33.2	39.4	43.5	45.3	45.1	44.5	45.4	48.0	52.3	57.3
<b>Households</b>														
FDEC, February 2019	7,425.0	7,433.2	7,441.5	7,451.3	7,463.9	7,479.6	7,497.3	7,515.9	7,534.5	7,552.9	7,571.8	7,591.9	7,614.1	7,638.5
FDEC, July 2019	7,425.0	7,433.2	7,441.5	7,451.3	7,463.9	7,479.6	7,497.3	7,515.9	7,534.5	7,552.9	7,571.8	7,591.9	7,614.1	7,638.5
<b>Household Growth Rate</b>														
FDEC, February 2019	0.50	0.44	0.45	0.53	0.68	0.84	0.95	1.00	0.99	0.98	1.00	1.07	1.17	1.29
FDEC, July 2019	0.50	0.44	0.45	0.53	0.68	0.84	0.95	1.00	0.99	0.98	1.00	1.07	1.17	1.29
<b>Net Change in Households</b>														
FDEC, February 2019	9.3	8.2	8.3	9.8	12.6	15.6	17.7	18.6	18.6	18.4	18.9	20.1	22.1	24.4
FDEC, July 2019	9.3	8.2	8.3	9.8	12.6	15.6	17.7	18.6	18.6	18.4	18.9	20.1	22.1	24.4
<b>Household Size</b>														
FDEC, February 2019	2.534	2.534	2.535	2.535	2.535	2.535	2.535	2.535	2.535	2.534	2.534	2.534	2.533	2.532
FDEC, July 2019	2.534	2.534	2.535	2.535	2.535	2.535	2.535	2.535	2.535	2.534	2.534	2.534	2.533	2.532
<b>Household Size Growth Rate</b>														
FDEC, February 2019	0.09	0.08	0.07	0.05	0.02	-0.01	-0.03	-0.04	-0.04	-0.04	-0.05	-0.06	-0.08	-0.09
FDEC, July 2019	0.09	0.08	0.07	0.05	0.02	-0.01	-0.03	-0.04	-0.04	-0.04	-0.05	-0.06	-0.08	-0.09
<b>Net Migration</b>														
FDEC, February 2019	17.2	14.1	14.3	17.2	23.1	29.3	33.7	35.8	35.7	35.3	36.3	39.1	43.5	48.5
FDEC, July 2019	17.2	14.1	14.3	17.2	23.1	29.3	33.7	35.8	35.7	35.3	36.3	39.1	43.5	48.5
<b>Births</b>														
FDEC, February 2019	53.7	53.5	53.3	53.4	53.3	53.3	53.2	53.2	53.2	53.3	53.4	53.5	53.7	53.9
FDEC, July 2019	53.7	53.5	53.3	53.4	53.3	53.3	53.2	53.2	53.2	53.3	53.4	53.5	53.7	53.9
<b>Deaths</b>														
FDEC, February 2019	43.1	43.2	43.2	43.1	43.1	43.2	43.4	43.6	43.8	44.1	44.3	44.6	44.9	45.1
FDEC, July 2019	43.1	43.2	43.3	43.1	43.1	43.2	43.4	43.6	43.8	44.1	44.3	44.6	44.9	45.1
<b>Net Natural Increase</b>														
FDEC, February 2019	10.6	10.3	10.0	10.3	10.2	10.0	9.9	9.5	9.3	9.2	9.0	8.9	8.8	8.8
FDEC, July 2019	10.6	10.3	10.0	10.3	10.2	10.0	9.9	9.5	9.3	9.2	9.0	8.9	8.8	8.7

	<u>2013-4</u>	<u>2014-1</u>	<u>2014-2</u>	<u>2014-3</u>	<u>2014-4</u>	<u>2015-1</u>	<u>2015-2</u>	<u>2015-3</u>	<u>2015-4</u>	<u>2016-1</u>	<u>2016-2</u>	<u>2016-3</u>	<u>2016-4</u>	<u>2017-1</u>
<b>Population</b>														
FDEC, February 2019	19,406.4	19,473.0	19,543.7	19,618.1	19,695.4	19,774.9	19,856.1	19,938.5	20,022.0	20,106.3	20,191.3	20,276.4	20,360.8	20,443.4
FDEC, July 2019	19,406.4	19,473.0	19,543.7	19,618.1	19,695.4	19,774.9	19,856.1	19,938.5	20,021.9	20,106.2	20,191.4	20,276.7	20,361.1	20,443.6
<b>Population Growth Rate</b>														
FDEC, February 2019	1.29	1.38	1.46	1.53	1.59	1.63	1.65	1.67	1.68	1.70	1.70	1.70	1.67	1.63
FDEC, July 2019	1.29	1.38	1.46	1.53	1.59	1.63	1.65	1.67	1.68	1.70	1.70	1.70	1.68	1.63
<b>Net Change in Population</b>														
FDEC, February 2019	62.1	66.6	70.7	74.3	77.3	79.6	81.2	82.4	83.4	84.3	85.0	85.1	84.4	82.6
FDEC, July 2019	62.1	66.6	70.7	74.4	77.3	79.6	81.2	82.4	83.4	84.4	85.1	85.3	84.4	82.4
<b>Households</b>														
FDEC, February 2019	7,665.1	7,693.7	7,724.2	7,756.2	7,789.4	7,823.5	7,858.3	7,893.4	7,928.9	7,964.9	8,001.1	8,037.5	8,073.3	8,108.1
FDEC, July 2019	7,665.1	7,693.7	7,724.2	7,756.2	7,789.4	7,823.5	7,858.2	7,893.4	7,928.9	7,964.9	8,001.2	8,037.6	8,073.4	8,108.2
<b>Household Growth Rate</b>														
FDEC, February 2019	1.40	1.50	1.59	1.67	1.72	1.76	1.79	1.80	1.81	1.83	1.83	1.83	1.80	1.74
FDEC, July 2019	1.40	1.50	1.59	1.67	1.72	1.76	1.79	1.80	1.81	1.83	1.84	1.83	1.80	1.73
<b>Net Change in Households</b>														
FDEC, February 2019	26.6	28.6	30.4	32.0	33.2	34.1	34.7	35.1	35.5	35.9	36.3	36.3	35.8	34.8
FDEC, July 2019	26.6	28.6	30.4	32.0	33.2	34.1	34.7	35.1	35.5	36.0	36.3	36.4	35.9	34.7
<b>Household Size</b>														
FDEC, February 2019	2.532	2.531	2.530	2.529	2.528	2.528	2.527	2.526	2.525	2.524	2.524	2.523	2.522	2.521
FDEC, July 2019	2.532	2.531	2.530	2.529	2.528	2.528	2.527	2.526	2.525	2.524	2.524	2.523	2.522	2.521
<b>Household Size Growth Rate</b>														
FDEC, February 2019	-0.11	-0.12	-0.13	-0.13	-0.14	-0.14	-0.13	-0.13	-0.13	-0.13	-0.13	-0.13	-0.12	-0.10
FDEC, July 2019	-0.11	-0.12	-0.13	-0.13	-0.14	-0.14	-0.13	-0.13	-0.13	-0.13	-0.13	-0.13	-0.12	-0.10
<b>Net Migration</b>														
FDEC, February 2019	53.4	57.8	62.0	65.7	68.7	71.1	72.9	74.3	75.6	76.8	77.8	78.4	78.0	77.0
FDEC, July 2019	53.4	57.8	62.0	65.7	68.7	71.0	72.8	74.3	75.6	76.9	78.0	78.5	78.1	76.8
<b>Births</b>														
FDEC, February 2019	54.1	54.5	54.8	55.1	55.4	55.8	56.0	56.2	56.3	56.3	56.3	56.3	56.2	56.0
FDEC, July 2019	54.1	54.5	54.8	55.1	55.4	55.8	56.0	56.2	56.3	56.3	56.3	56.3	56.2	56.1
<b>Deaths</b>														
FDEC, February 2019	45.4	45.7	46.1	46.4	46.8	47.3	47.7	48.1	48.4	48.8	49.1	49.5	49.9	50.4
FDEC, July 2019	45.4	45.7	46.1	46.4	46.8	47.3	47.7	48.1	48.4	48.8	49.1	49.5	49.9	50.4
<b>Net Natural Increase</b>														
FDEC, February 2019	8.7	8.8	8.8	8.7	8.6	8.5	8.3	8.1	7.8	7.5	7.2	6.8	6.3	5.6
FDEC, July 2019	8.7	8.8	8.8	8.7	8.6	8.5	8.3	8.1	7.8	7.5	7.2	6.8	6.3	5.7

	<u>2017-2</u>	<u>2017-3</u>	<u>2017-4</u>	<u>2018-1</u>	<u>2018-2</u>	<u>2018-3</u>	<u>2018-4</u>	<u>2019-1</u>	<u>2019-2</u>	<u>2019-3</u>	<u>2019-4</u>	<u>2020-1</u>	<u>2020-2</u>	<u>2020-3</u>
<b>Population</b>														
FDEC, February 2019	20,523.5	20,612.2	20,706.4	20,795.9	20,884.5	20,971.5	21,057.4	21,142.3	21,226.5	21,310.3	21,393.6	21,476.4	21,558.6	21,640.2
FDEC, July 2019	20,523.2	20,611.2	20,705.1	20,795.3	20,885.9	20,976.5	21,066.7	21,156.3	21,244.8	21,332.2	21,418.6	21,504.3	21,589.2	21,673.6
<b>Population Growth Rate</b>														
FDEC, February 2019	1.58	1.74	1.84	1.74	1.71	1.68	1.65	1.62	1.60	1.59	1.57	1.56	1.54	1.52
FDEC, July 2019	1.57	1.73	1.83	1.75	1.75	1.75	1.73	1.71	1.68	1.66	1.63	1.61	1.59	1.57
<b>Net Change in Population</b>														
FDEC, February 2019	80.2	88.7	94.2	89.6	88.5	87.1	85.8	84.9	84.3	83.8	83.3	82.8	82.2	81.7
FDEC, July 2019	79.6	88.0	93.9	90.2	90.6	90.6	90.2	89.5	88.5	87.4	86.4	85.6	84.9	84.3
<b>Households</b>														
FDEC, February 2019	8,141.4	8,177.7	8,216.0	8,252.7	8,289.4	8,326.0	8,362.5	8,398.6	8,434.5	8,470.0	8,505.3	8,540.5	8,575.7	8,611.0
FDEC, July 2019	8,141.3	8,177.3	8,215.5	8,252.5	8,290.0	8,328.0	8,366.2	8,404.2	8,441.8	8,478.8	8,515.3	8,551.6	8,587.8	8,624.0
<b>Household Growth Rate</b>														
FDEC, February 2019	1.65	1.79	1.89	1.80	1.79	1.78	1.76	1.74	1.72	1.70	1.68	1.67	1.66	1.65
FDEC, July 2019	1.64	1.78	1.88	1.81	1.83	1.85	1.85	1.83	1.80	1.76	1.74	1.72	1.70	1.69
<b>Net Change in Households</b>														
FDEC, February 2019	33.3	36.3	38.3	36.7	36.7	36.6	36.4	36.2	35.8	35.5	35.3	35.2	35.2	35.3
FDEC, July 2019	33.1	36.0	38.2	36.9	37.5	38.0	38.2	38.0	37.6	37.0	36.6	36.3	36.2	36.1
<b>Household Size</b>														
FDEC, February 2019	2.521	2.521	2.520	2.520	2.519	2.519	2.518	2.517	2.517	2.516	2.515	2.515	2.514	2.513
FDEC, July 2019	2.521	2.521	2.520	2.520	2.519	2.519	2.518	2.517	2.517	2.516	2.515	2.515	2.514	2.513
<b>Household Size Growth Rate</b>														
FDEC, February 2019	-0.08	-0.05	-0.05	-0.05	-0.08	-0.10	-0.11	-0.12	-0.11	-0.11	-0.10	-0.11	-0.12	-0.13
FDEC, July 2019	-0.08	-0.05	-0.05	-0.05	-0.08	-0.10	-0.11	-0.12	-0.11	-0.11	-0.10	-0.11	-0.11	-0.12
<b>Net Migration</b>														
FDEC, February 2019	75.0	83.8	89.6	85.1	84.2	83.0	81.9	81.3	80.8	80.5	80.2	79.9	79.5	79.0
FDEC, July 2019	74.4	83.1	89.4	86.0	86.7	86.9	86.8	86.3	85.5	84.6	83.8	83.2	82.7	82.2
<b>Births</b>														
FDEC, February 2019	55.9	55.8	55.8	55.5	55.5	55.5	55.6	55.8	56.0	56.2	56.4	56.6	56.8	57.0
FDEC, July 2019	56.0	55.8	55.7	55.3	55.2	55.2	55.2	55.5	55.6	55.8	56.0	56.2	56.4	56.6
<b>Deaths</b>														
FDEC, February 2019	50.7	51.0	51.2	51.0	51.2	51.4	51.6	52.2	52.5	52.9	53.3	53.7	54.1	54.4
FDEC, July 2019	50.7	51.0	51.2	51.0	51.2	51.5	51.8	52.3	52.6	53.0	53.3	53.8	54.1	54.5
<b>Net Natural Increase</b>														
FDEC, February 2019	5.2	4.8	4.6	4.5	4.3	4.1	3.9	3.7	3.5	3.3	3.1	2.9	2.7	2.6
FDEC, July 2019	5.2	4.8	4.5	4.3	4.0	3.7	3.5	3.2	3.0	2.8	2.6	2.4	2.3	2.2

	<u>2020-4</u>	<u>2021-1</u>	<u>2021-2</u>	<u>2021-3</u>	<u>2021-4</u>	<u>2022-1</u>	<u>2022-2</u>	<u>2022-3</u>	<u>2022-4</u>	<u>2023-1</u>	<u>2023-2</u>	<u>2023-3</u>	<u>2023-4</u>	<u>2024-1</u>
<b>Population</b>														
FDEC, February 2019	21,721.3	21,802.0	21,882.1	21,961.8	22,041.0	22,119.6	22,197.8	22,275.5	22,352.5	22,428.9	22,504.6	22,579.6	22,653.9	22,727.5
FDEC, July 2019	21,757.3	21,840.4	21,922.9	22,004.8	22,086.1	22,166.7	22,246.7	22,326.1	22,404.8	22,482.8	22,560.0	22,636.4	22,712.0	22,786.9
<b>Population Growth Rate</b>														
FDEC, February 2019	1.51	1.49	1.48	1.46	1.45	1.44	1.42	1.41	1.39	1.37	1.36	1.34	1.32	1.31
FDEC, July 2019	1.55	1.54	1.52	1.50	1.49	1.47	1.45	1.43	1.42	1.40	1.38	1.36	1.34	1.33
<b>Net Change in Population</b>														
FDEC, February 2019	81.1	80.6	80.1	79.7	79.2	78.7	78.2	77.6	77.0	76.4	75.7	75.0	74.3	73.6
FDEC, July 2019	83.7	83.1	82.5	81.9	81.3	80.6	80.0	79.4	78.7	78.0	77.2	76.4	75.7	74.9
<b>Households</b>														
FDEC, February 2019	8,646.3	8,681.5	8,716.5	8,751.5	8,786.2	8,820.7	8,855.0	8,889.1	8,923.0	8,956.6	8,990.2	9,023.9	9,057.7	9,091.6
FDEC, July 2019	8,660.1	8,696.1	8,731.9	8,767.7	8,803.3	8,838.8	8,874.2	8,909.5	8,944.7	8,979.7	9,014.6	9,049.2	9,083.7	9,118.1
<b>Household Growth Rate</b>														
FDEC, February 2019	1.65	1.64	1.63	1.61	1.60	1.58	1.56	1.55	1.53	1.52	1.51	1.51	1.51	1.50
FDEC, July 2019	1.68	1.67	1.66	1.65	1.64	1.62	1.61	1.60	1.59	1.58	1.56	1.55	1.53	1.52
<b>Net Change in Households</b>														
FDEC, February 2019	35.3	35.2	35.1	34.9	34.7	34.5	34.3	34.1	33.8	33.6	33.6	33.7	33.8	33.8
FDEC, July 2019	36.1	36.0	35.9	35.7	35.6	35.5	35.4	35.3	35.2	35.0	34.8	34.7	34.5	34.4
<b>Household Size</b>														
FDEC, February 2019	2.512	2.511	2.510	2.509	2.509	2.508	2.507	2.506	2.505	2.504	2.503	2.502	2.501	2.500
FDEC, July 2019	2.512	2.512	2.511	2.510	2.509	2.508	2.507	2.506	2.505	2.504	2.503	2.501	2.500	2.499
<b>Household Size Growth Rate</b>														
FDEC, February 2019	-0.14	-0.14	-0.15	-0.15	-0.14	-0.14	-0.14	-0.14	-0.14	-0.14	-0.15	-0.17	-0.18	-0.19
FDEC, July 2019	-0.13	-0.13	-0.14	-0.14	-0.15	-0.15	-0.16	-0.16	-0.17	-0.17	-0.18	-0.18	-0.19	-0.20
<b>Net Migration</b>														
FDEC, February 2019	78.6	78.1	77.7	77.3	76.9	76.5	76.1	75.7	75.2	74.6	74.1	73.5	72.9	72.3
FDEC, July 2019	81.6	81.0	80.4	79.9	79.3	78.8	78.2	77.7	77.1	76.5	75.8	75.1	74.4	73.7
<b>Births</b>														
FDEC, February 2019	57.2	57.4	57.7	57.9	58.1	58.2	58.4	58.6	58.8	59.0	59.2	59.4	59.6	59.7
FDEC, July 2019	56.9	57.1	57.3	57.5	57.7	57.9	58.1	58.3	58.5	58.8	59.0	59.2	59.4	59.6
<b>Deaths</b>														
FDEC, February 2019	54.7	54.9	55.2	55.5	55.8	56.1	56.4	56.7	57.0	57.3	57.5	57.8	58.1	58.4
FDEC, July 2019	54.8	54.9	55.2	55.5	55.8	56.1	56.4	56.6	56.9	57.2	57.5	57.8	58.1	58.4
<b>Net Natural Increase</b>														
FDEC, February 2019	2.5	2.5	2.5	2.4	2.3	2.2	2.1	2.0	1.8	1.7	1.6	1.5	1.4	1.3
FDEC, July 2019	2.1	2.1	2.1	2.0	1.9	1.9	1.8	1.7	1.6	1.5	1.4	1.3	1.3	1.2

	<u>2024-2</u>	<u>2024-3</u>	<u>2024-4</u>	<u>2025-1</u>	<u>2025-2</u>	<u>2025-3</u>	<u>2025-4</u>	<u>2026-1</u>	<u>2026-2</u>	<u>2026-3</u>	<u>2026-4</u>	<u>2027-1</u>	<u>2027-2</u>
<b>Population</b>													
FDEC, February 2019	22,800.5	22,872.8	22,944.5	23,015.5	23,085.9	23,155.6	23,224.8	23,293.4	23,361.3	23,428.7	23,495.4	23,561.6	23,627.1
FDEC, July 2019	22,861.1	22,934.5	23,007.2	23,079.2	23,150.5	23,221.0	23,290.8	23,359.9	23,428.4	23,496.1	23,563.2	23,629.6	23,695.4
<b>Population Growth Rate</b>													
FDEC, February 2019	1.29	1.27	1.26	1.24	1.23	1.21	1.20	1.19	1.17	1.16	1.14	1.13	1.12
FDEC, July 2019	1.31	1.29	1.27	1.26	1.24	1.22	1.21	1.19	1.18	1.16	1.15	1.13	1.12
<b>Net Change in Population</b>													
FDEC, February 2019	73.0	72.3	71.6	71.0	70.4	69.8	69.2	68.6	68.0	67.4	66.7	66.2	65.6
FDEC, July 2019	74.2	73.4	72.7	72.0	71.3	70.5	69.8	69.1	68.4	67.7	67.1	66.4	65.8
<b>Households</b>													
FDEC, February 2019	9,125.5	9,159.5	9,193.5	9,227.5	9,261.4	9,295.2	9,328.9	9,362.5	9,395.8	9,429.0	9,462.0	9,494.7	9,527.3
FDEC, July 2019	9,152.6	9,187.3	9,222.1	9,256.8	9,291.6	9,326.3	9,361.1	9,395.8	9,430.5	9,465.2	9,499.9	9,534.4	9,568.7
<b>Household Growth Rate</b>													
FDEC, February 2019	1.50	1.50	1.49	1.49	1.48	1.47	1.46	1.45	1.43	1.42	1.41	1.39	1.38
FDEC, July 2019	1.52	1.52	1.52	1.52	1.51	1.50	1.50	1.49	1.49	1.48	1.47	1.46	1.45
<b>Net Change in Households</b>													
FDEC, February 2019	33.9	34.0	34.0	34.0	33.9	33.8	33.7	33.5	33.4	33.2	33.0	32.8	32.6
FDEC, July 2019	34.5	34.7	34.7	34.8	34.8	34.7	34.7	34.7	34.7	34.7	34.7	34.5	34.3
<b>Household Size</b>													
FDEC, February 2019	2.499	2.497	2.496	2.494	2.493	2.491	2.490	2.488	2.486	2.485	2.483	2.482	2.480
FDEC, July 2019	2.498	2.496	2.495	2.493	2.492	2.490	2.488	2.486	2.484	2.482	2.480	2.478	2.476
<b>Household Size Growth Rate</b>													
FDEC, February 2019	-0.21	-0.22	-0.23	-0.24	-0.25	-0.25	-0.25	-0.26	-0.26	-0.26	-0.26	-0.26	-0.26
FDEC, July 2019	-0.21	-0.23	-0.24	-0.26	-0.27	-0.28	-0.28	-0.30	-0.31	-0.31	-0.32	-0.32	-0.32
<b>Net Migration</b>													
FDEC, February 2019	71.7	71.2	70.6	70.1	69.6	69.1	68.7	68.3	67.8	67.4	67.0	66.7	66.3
FDEC, July 2019	73.1	72.4	71.8	71.2	70.6	70.1	69.5	69.1	68.6	68.1	67.7	67.3	66.9
<b>Births</b>													
FDEC, February 2019	59.9	60.1	60.3	60.5	60.6	60.8	61.0	61.1	61.3	61.4	61.6	61.7	61.8
FDEC, July 2019	59.8	60.0	60.2	60.4	60.6	60.8	61.0	61.2	61.4	61.5	61.7	61.8	62.0
<b>Deaths</b>													
FDEC, February 2019	58.7	59.0	59.3	59.5	59.8	60.1	60.5	60.8	61.2	61.5	61.9	62.2	62.6
FDEC, July 2019	58.7	59.0	59.3	59.6	60.0	60.3	60.7	61.1	61.5	61.9	62.3	62.7	63.1
<b>Net Natural Increase</b>													
FDEC, February 2019	1.2	1.1	1.0	0.9	0.8	0.7	0.5	0.3	0.1	-0.1	-0.3	-0.5	-0.8
FDEC, July 2019	1.1	1.0	0.9	0.8	0.6	0.5	0.3	0.1	-0.1	-0.4	-0.6	-0.9	-1.1



	<u>2027-3</u>	<u>2027-4</u>	<u>2028-1</u>	<u>2028-2</u>	<u>2028-3</u>	<u>2028-4</u>	<u>2029-1</u>	<u>2029-2</u>
Population								
FDEC, February 2019	23,692.1	23,756.5	23,820.3	23,883.6	23,946.3	24,008.4	24,070.0	24,131.1
FDEC, July 2019	23,760.5	23,825.0	23,888.8	23,952.1	24,014.8	24,076.9	24,138.4	24,199.4
Population Growth Rate								
FDEC, February 2019	1.10	1.09	1.08	1.07	1.05	1.04	1.03	1.02
FDEC, July 2019	1.10	1.09	1.08	1.06	1.05	1.04	1.03	1.01
Net Change in Population								
FDEC, February 2019	65.0	64.4	63.8	63.3	62.7	62.1	61.6	61.1
FDEC, July 2019	65.1	64.5	63.9	63.3	62.7	62.1	61.5	61.0
Households								
FDEC, February 2019	9,559.7	9,591.9	9,623.8	9,655.4	9,686.8	9,717.9	9,748.7	9,779.2
FDEC, July 2019	9,602.8	9,636.6	9,670.2	9,703.4	9,736.4	9,769.0	9,801.3	9,833.2
Household Growth Rate								
FDEC, February 2019	1.37	1.35	1.34	1.32	1.31	1.29	1.27	1.26
FDEC, July 2019	1.43	1.42	1.40	1.38	1.37	1.35	1.33	1.31
Net Change in Households								
FDEC, February 2019	32.4	32.2	31.9	31.6	31.4	31.1	30.8	30.5
FDEC, July 2019	34.1	33.8	33.5	33.3	33.0	32.6	32.3	31.9
Household Size								
FDEC, February 2019	2.478	2.477	2.475	2.474	2.472	2.471	2.469	2.468
FDEC, July 2019	2.474	2.472	2.470	2.468	2.466	2.465	2.463	2.461
Household Size Growth Rate								
FDEC, February 2019	-0.26	-0.26	-0.26	-0.25	-0.25	-0.24	-0.24	-0.24
FDEC, July 2019	-0.32	-0.32	-0.32	-0.32	-0.31	-0.31	-0.30	-0.29
Net Migration								
FDEC, February 2019	65.9	65.6	65.2	64.9	64.5	64.2	63.8	63.5
FDEC, July 2019	66.5	66.1	65.7	65.3	65.0	64.6	64.3	63.9
Births								
FDEC, February 2019	61.9	62.0	62.1	62.3	62.4	62.5	62.6	62.7
FDEC, July 2019	62.1	62.3	62.4	62.6	62.7	62.9	63.0	63.1
Deaths								
FDEC, February 2019	62.9	63.2	63.5	63.9	64.2	64.5	64.8	65.1
FDEC, July 2019	63.5	63.8	64.2	64.6	65.0	65.4	65.7	66.1
Net Natural Increase								
FDEC, February 2019	-1.0	-1.2	-1.4	-1.6	-1.8	-2.0	-2.2	-2.4
FDEC, July 2019	-1.3	-1.6	-1.8	-2.0	-2.3	-2.5	-2.7	-3.0

	<u>2000-01</u>	<u>2001-02</u>	<u>2002-03</u>	<u>2003-04</u>	<u>2004-05</u>	<u>2005-06</u>	<u>2006-07</u>	<u>2007-08</u>	<u>2008-09</u>	<u>2009-10</u>	<u>2010-11</u>	<u>2011-12</u>	<u>2012-13</u>	<u>2013-14</u>	<u>2014-15</u>
<b>Population</b>															
FDEC, February 2019	16,228.0	16,551.2	16,892.0	17,273.8	17,677.3	18,062.2	18,378.2	18,578.9	18,671.4	18,770.4	18,878.6	19,029.3	19,212.3	19,441.8	19,736.1
FDEC, July 2019	16,228.0	16,551.2	16,892.0	17,273.8	17,677.3	18,062.2	18,378.2	18,578.9	18,671.4	18,770.4	18,878.6	19,029.3	19,212.3	19,441.8	19,736.1
<b>Growth Rate</b>															
FDEC, February 2019	2.18	1.99	2.06	2.26	2.34	2.18	1.75	1.09	0.50	0.53	0.58	0.80	0.96	1.19	1.51
FDEC, July 2019	2.18	1.99	2.06	2.26	2.34	2.18	1.75	1.09	0.50	0.53	0.58	0.80	0.96	1.19	1.51
<b>Net Change in Population</b>															
FDEC, February 2019	346.4	323.2	340.9	381.8	403.5	384.9	316.0	200.7	92.5	99.0	108.2	150.7	183.0	229.5	294.3
FDEC, July 2019	346.4	323.2	340.9	381.8	403.5	384.9	316.0	200.7	92.5	99.0	108.2	150.7	183.0	229.5	294.3
<b>Households</b>															
FDEC, February 2019	6,431.8	6,554.7	6,685.7	6,833.2	6,990.5	7,142.1	7,266.1	7,341.9	7,374.2	7,410.1	7,447.5	7,506.8	7,582.7	7,680.4	7,806.8
FDEC, July 2019	6,431.8	6,554.7	6,685.7	6,833.2	6,990.5	7,142.1	7,266.1	7,341.9	7,374.2	7,410.1	7,447.5	7,506.8	7,582.7	7,680.4	7,806.8
<b>Growth Rate</b>															
FDEC, February 2019	2.14	1.91	2.00	2.21	2.30	2.17	1.74	1.04	0.44	0.49	0.50	0.80	1.01	1.29	1.65
FDEC, July 2019	2.14	1.91	2.00	2.21	2.30	2.17	1.74	1.04	0.44	0.49	0.50	0.80	1.01	1.29	1.65
<b>Net Change in Households</b>															
FDEC, February 2019	134.6	122.9	131.0	147.5	157.3	151.7	124.0	75.7	32.3	35.9	37.4	59.3	75.9	97.7	126.5
FDEC, July 2019	134.6	122.9	131.0	147.5	157.3	151.7	124.0	75.7	32.3	35.9	37.4	59.3	75.9	97.7	126.5
<b>Household Size</b>															
FDEC, February 2019	2.523	2.525	2.527	2.528	2.529	2.529	2.529	2.531	2.532	2.533	2.535	2.535	2.534	2.531	2.528
FDEC, July 2019	2.523	2.525	2.527	2.528	2.529	2.529	2.529	2.531	2.532	2.533	2.535	2.535	2.534	2.531	2.528
<b>Growth Rate</b>															
FDEC, February 2019	0.04	0.08	0.06	0.05	0.03	0.01	0.01	0.05	0.06	0.04	0.07	0.00	-0.05	-0.09	-0.13
FDEC, July 2019	0.04	0.08	0.06	0.05	0.03	0.01	0.01	0.05	0.06	0.04	0.07	0.00	-0.05	-0.09	-0.13
<b>Net Migration</b>															
FDEC, February 2019	306.0	285.5	300.4	335.0	351.1	322.9	245.0	133.7	36.3	52.7	67.4	112.0	147.0	194.4	260.2
FDEC, July 2019	306.0	285.5	300.4	335.0	351.1	322.9	245.0	133.7	36.3	52.7	67.4	111.9	147.0	194.4	260.2
<b>Births</b>															
FDEC, February 2019	205.4	205.4	208.5	215.0	221.8	232.1	239.3	236.0	226.4	217.4	213.5	212.9	213.8	217.4	222.3
FDEC, July 2019	205.4	205.4	208.5	215.0	221.8	232.1	239.3	236.0	226.4	217.4	213.5	212.9	213.8	217.4	222.3
<b>Deaths</b>															
FDEC, February 2019	165.0	167.7	168.1	168.3	169.4	170.1	168.3	169.0	170.2	171.1	172.7	174.1	177.8	182.4	188.2
FDEC, July 2019	165.0	167.7	168.1	168.3	169.4	170.1	168.3	169.0	170.2	171.1	172.7	174.1	177.8	182.4	188.2
<b>Net Natural Increase</b>															
FDEC, February 2019	40.3	37.7	40.4	46.7	52.4	62.0	71.0	67.0	56.2	46.3	40.8	38.8	36.0	35.0	34.1
FDEC, July 2019	40.3	37.7	40.4	46.7	52.4	62.0	71.0	67.0	56.2	46.3	40.8	38.8	36.0	35.0	34.1

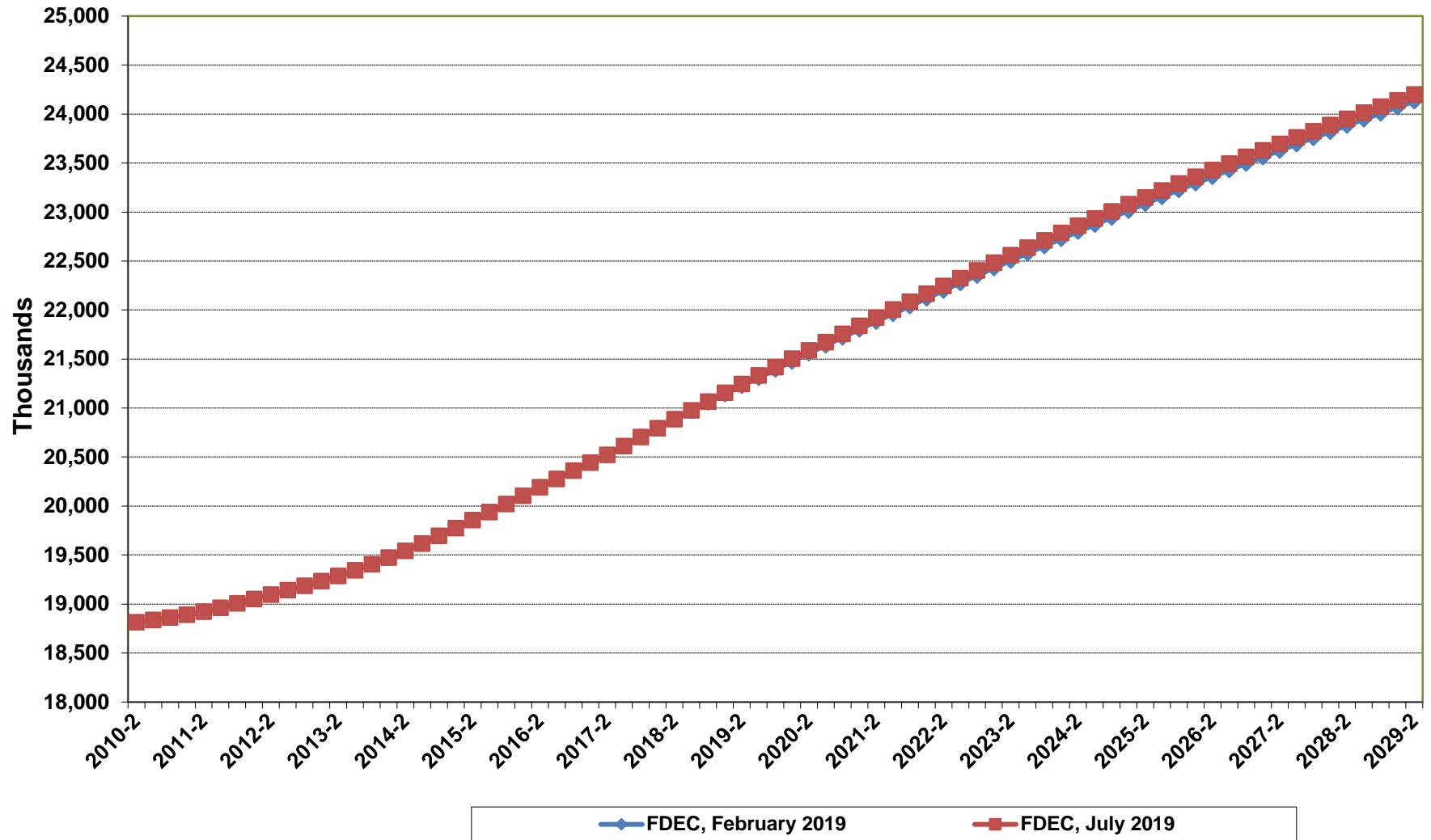
	<u>2015-16</u>	<u>2016-17</u>	<u>2017-18</u>	<u>2018-19</u>	<u>2019-20</u>	<u>2020-21</u>	<u>2021-22</u>	<u>2022-23</u>	<u>2023-24</u>	<u>2024-25</u>	<u>2025-26</u>	<u>2026-27</u>	<u>2027-28</u>	<u>2028-29</u>
<b>Population</b>														
FDEC, February 2019	20,064.5	20,401.0	20,749.7	21,099.4	21,434.7	21,761.4	22,080.1	22,390.4	22,690.4	22,979.6	23,258.8	23,528.2	23,788.1	24,038.9
FDEC, July 2019	20,064.5	20,401.1	20,749.4	21,111.1	21,461.1	21,798.5	22,126.1	22,443.4	22,749.1	23,042.9	23,325.0	23,596.1	23,856.6	24,107.4
<b>Growth Rate</b>														
FDEC, February 2019	1.66	1.68	1.71	1.69	1.59	1.52	1.46	1.41	1.34	1.27	1.21	1.16	1.10	1.05
FDEC, July 2019	1.66	1.68	1.71	1.74	1.66	1.57	1.50	1.43	1.36	1.29	1.22	1.16	1.10	1.05
<b>Net Change in Population</b>														
FDEC, February 2019	328.4	336.5	348.7	349.7	335.3	326.7	318.6	310.3	300.0	289.3	279.1	269.4	259.9	250.8
FDEC, July 2019	328.4	336.7	348.2	361.7	350.0	337.5	327.5	317.3	305.7	293.7	282.2	271.0	260.5	250.8
<b>Households</b>														
FDEC, February 2019	7,947.1	8,090.1	8,234.0	8,380.4	8,522.9	8,663.8	8,803.4	8,939.7	9,074.7	9,210.5	9,345.6	9,478.3	9,607.7	9,733.1
FDEC, July 2019	7,947.1	8,090.1	8,233.8	8,385.0	8,533.4	8,678.0	8,821.0	8,962.1	9,100.9	9,239.5	9,378.4	9,517.1	9,653.2	9,785.0
<b>Growth Rate</b>														
FDEC, February 2019	1.80	1.80	1.78	1.78	1.70	1.65	1.61	1.55	1.51	1.50	1.47	1.42	1.37	1.31
FDEC, July 2019	1.80	1.80	1.78	1.84	1.77	1.69	1.65	1.60	1.55	1.52	1.50	1.48	1.43	1.36
<b>Net Change in Households</b>														
FDEC, February 2019	140.2	143.0	143.9	146.4	142.5	140.9	139.6	136.4	135.0	135.8	135.2	132.6	129.4	125.4
FDEC, July 2019	140.2	143.0	143.7	151.2	148.4	144.6	143.0	141.1	138.8	138.5	139.0	138.6	136.2	131.7
<b>Household Size</b>														
FDEC, February 2019	2.525	2.522	2.520	2.518	2.515	2.512	2.508	2.505	2.500	2.495	2.489	2.482	2.476	2.470
FDEC, July 2019	2.525	2.522	2.520	2.518	2.515	2.512	2.508	2.504	2.500	2.494	2.487	2.479	2.471	2.464
<b>Growth Rate</b>														
FDEC, February 2019	-0.13	-0.12	-0.07	-0.09	-0.11	-0.13	-0.14	-0.14	-0.17	-0.22	-0.25	-0.26	-0.26	-0.25
FDEC, July 2019	-0.13	-0.12	-0.07	-0.09	-0.11	-0.12	-0.14	-0.16	-0.18	-0.23	-0.28	-0.31	-0.32	-0.31
<b>Net Migration</b>														
FDEC, February 2019	297.8	312.6	330.5	334.5	323.3	316.5	309.8	303.1	294.5	285.4	277.6	271.1	265.1	259.2
FDEC, July 2019	297.7	312.7	330.7	348.3	339.9	329.0	320.0	311.1	300.8	290.5	281.5	274.0	267.3	261.3
<b>Births</b>														
FDEC, February 2019	225.0	224.4	222.6	222.9	225.9	229.3	232.6	235.6	238.6	241.5	244.2	246.5	248.4	250.2
FDEC, July 2019	225.0	224.5	222.0	221.5	224.4	227.9	231.3	234.6	237.8	241.1	244.3	247.0	249.4	251.7
<b>Deaths</b>														
FDEC, February 2019	194.4	200.5	204.4	207.8	213.9	219.2	223.7	228.4	233.0	237.6	242.7	248.2	253.5	258.6
FDEC, July 2019	194.4	200.5	204.4	208.1	214.3	219.4	223.7	228.4	232.9	237.8	243.7	250.0	256.1	262.2
<b>Net Natural Increase</b>														
FDEC, February 2019	30.6	23.9	18.2	15.2	12.0	10.1	8.9	7.2	5.5	3.9	1.5	-1.7	-5.2	-8.4
FDEC, July 2019	30.6	24.0	17.6	13.4	10.1	8.5	7.6	6.2	4.9	3.2	0.6	-2.9	-6.7	-10.5

# **Florida Demographic Estimating Conference**

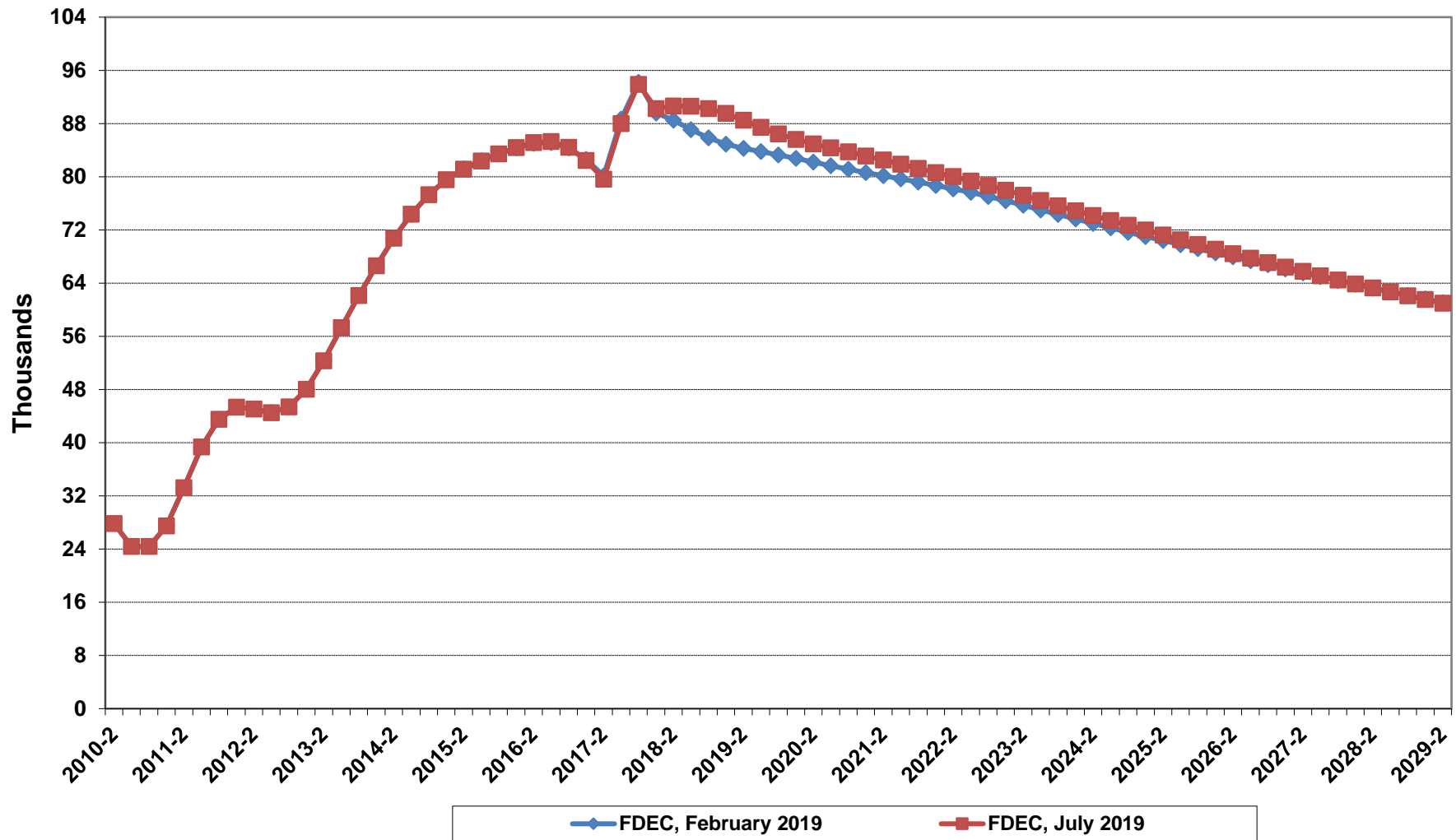
**Charts**  
Conference Packet

July 8, 2019

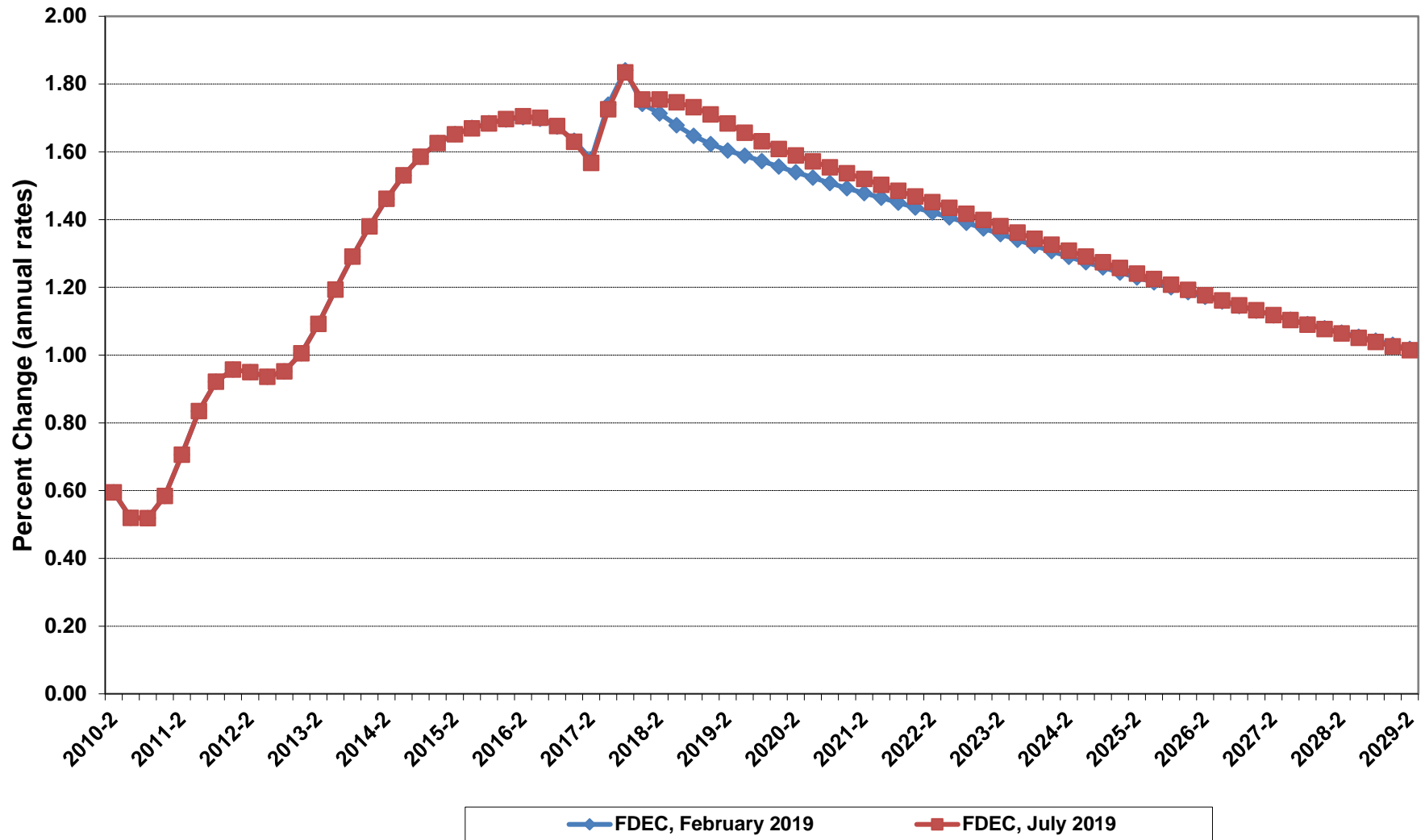
# Florida Resident Population



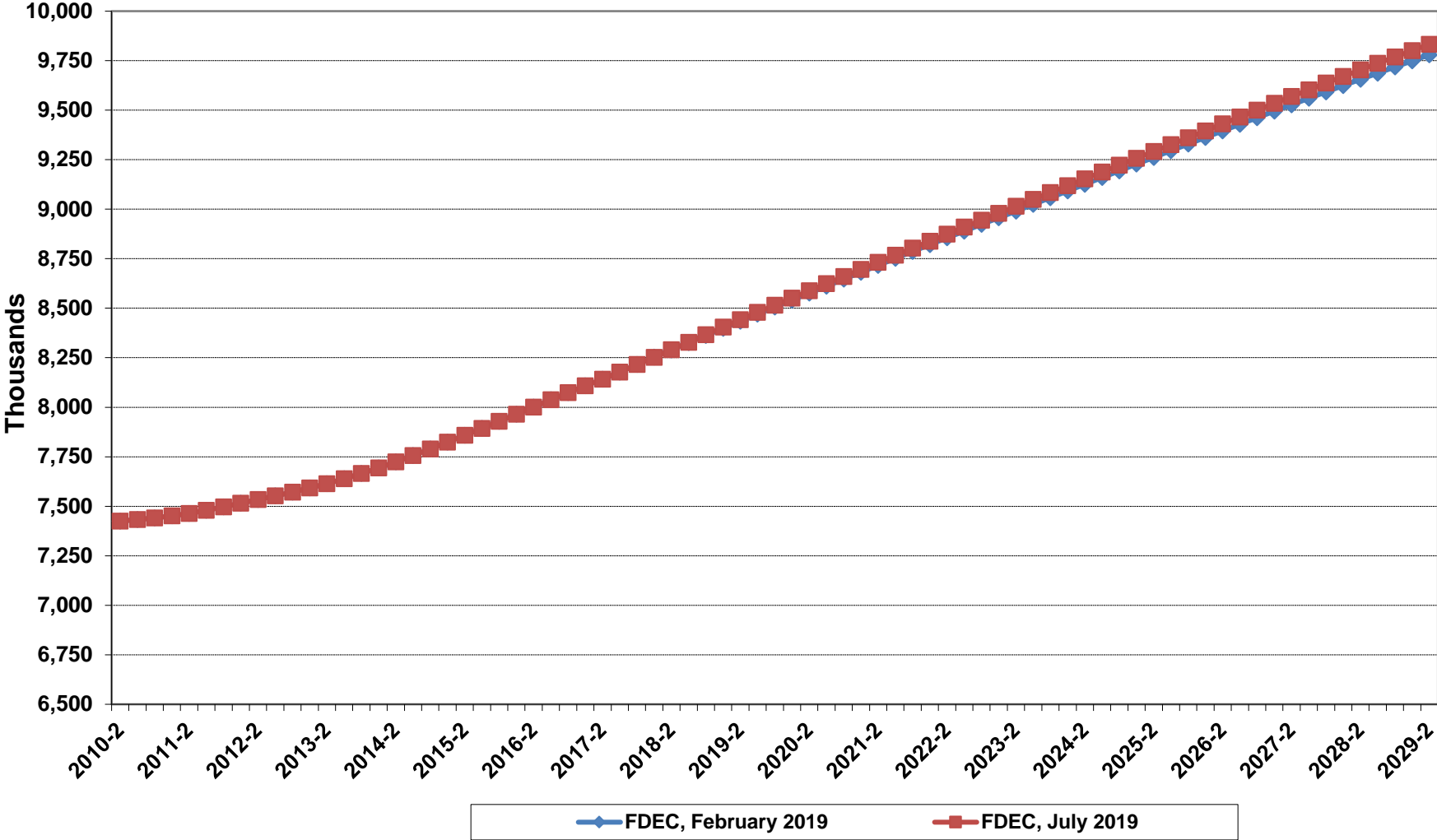
# Net Change In Florida Resident Population



# Growth In Florida Resident Population

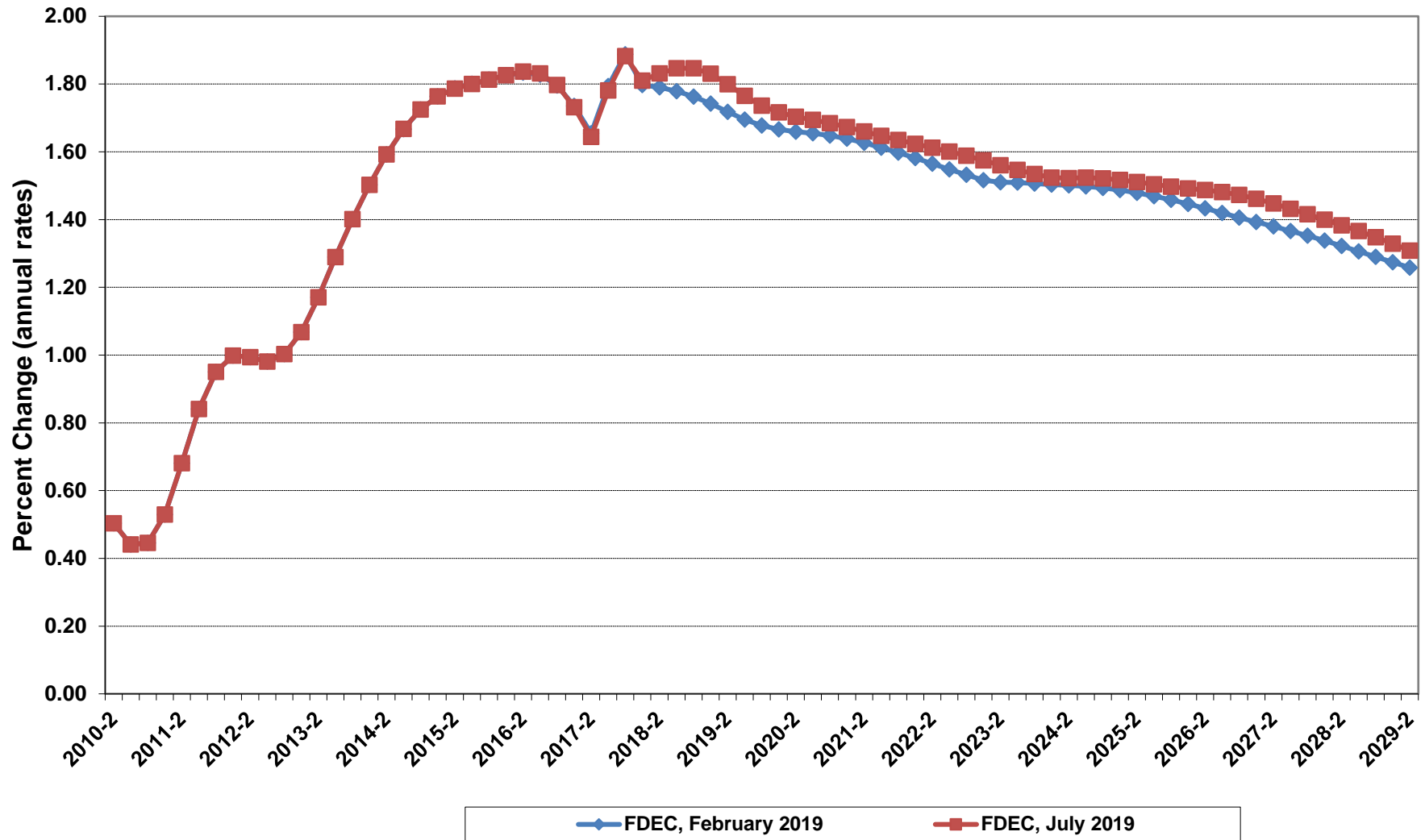


# Florida Resident Households

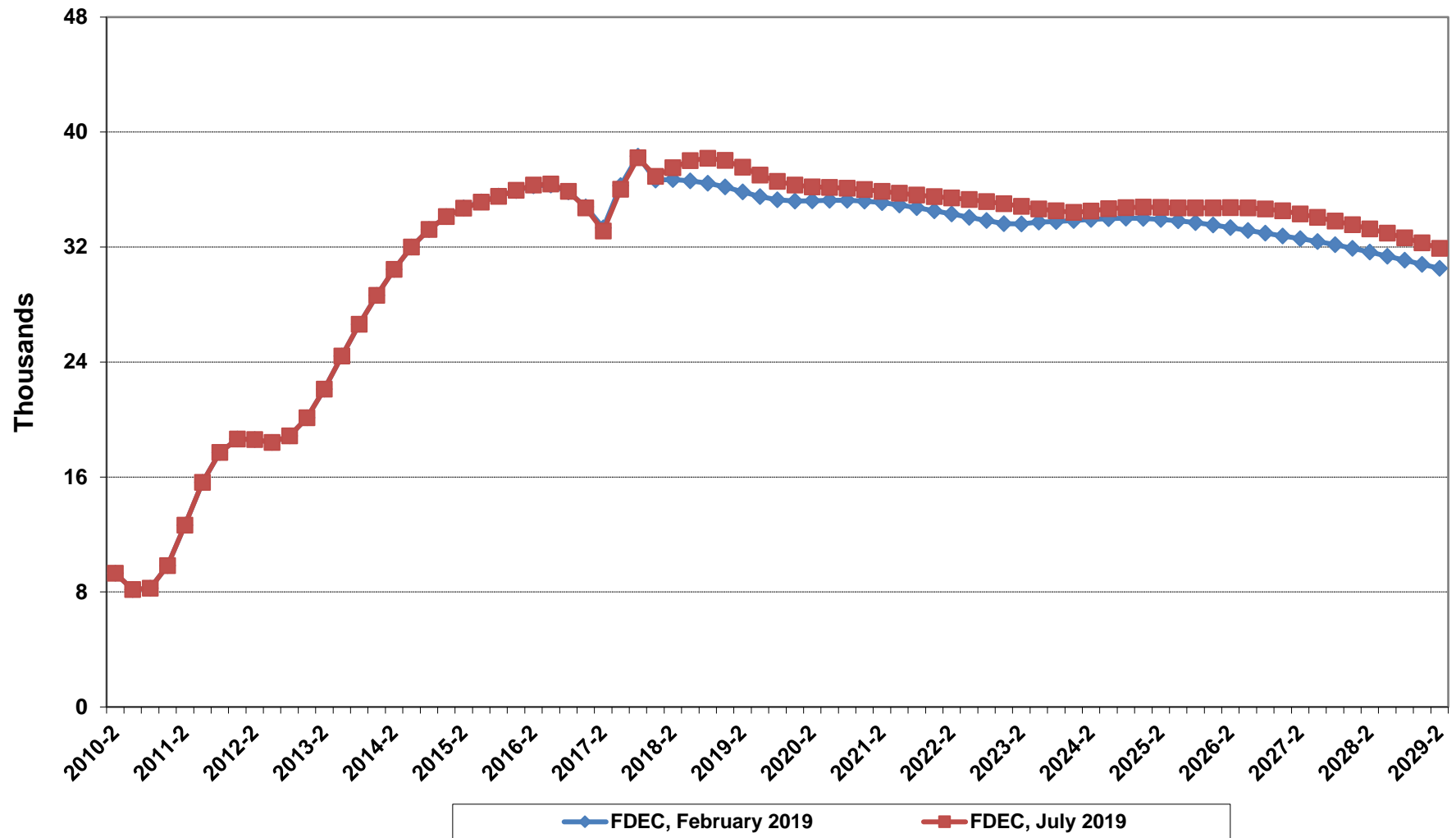




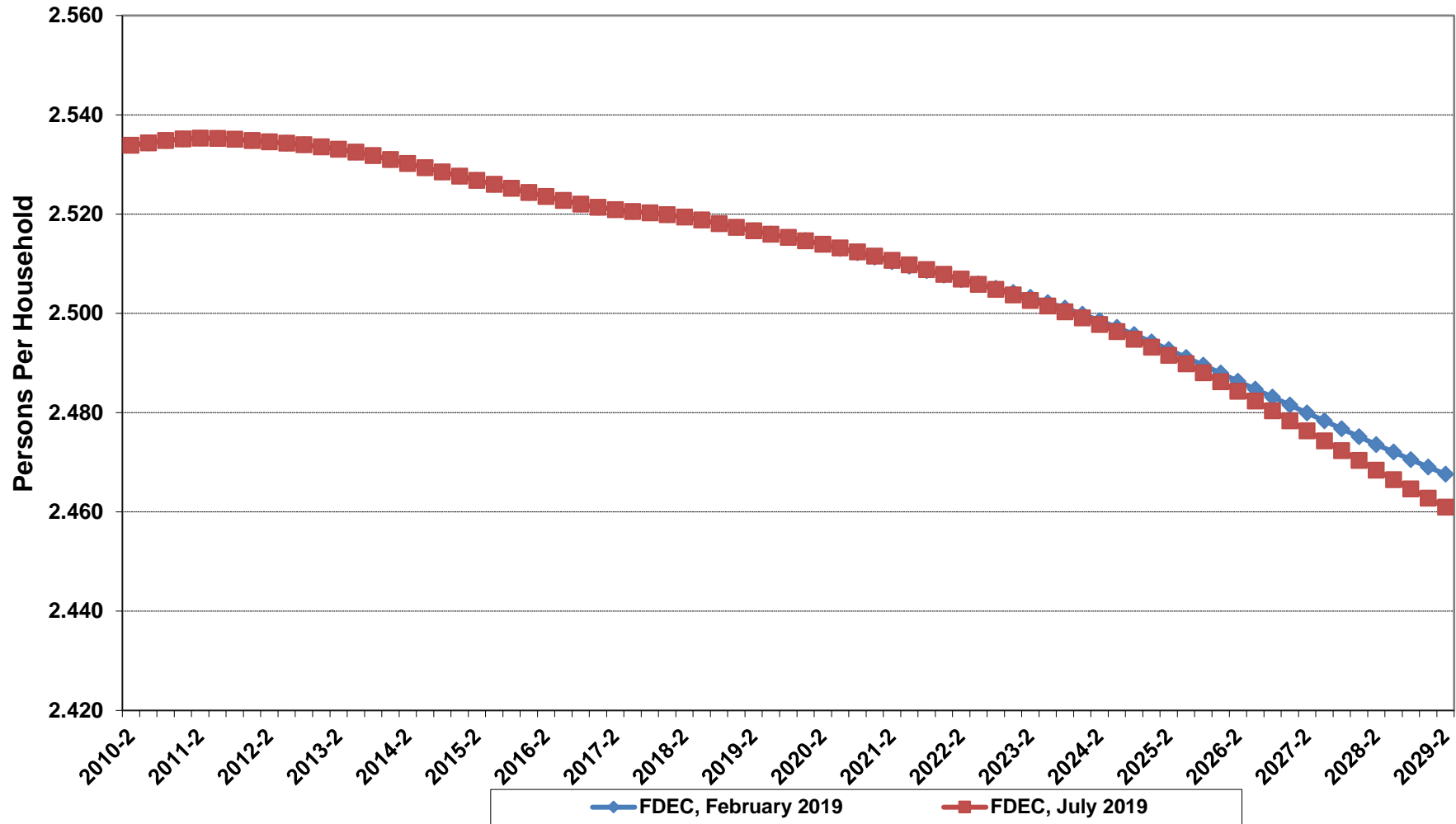
# Growth In Florida Resident Households



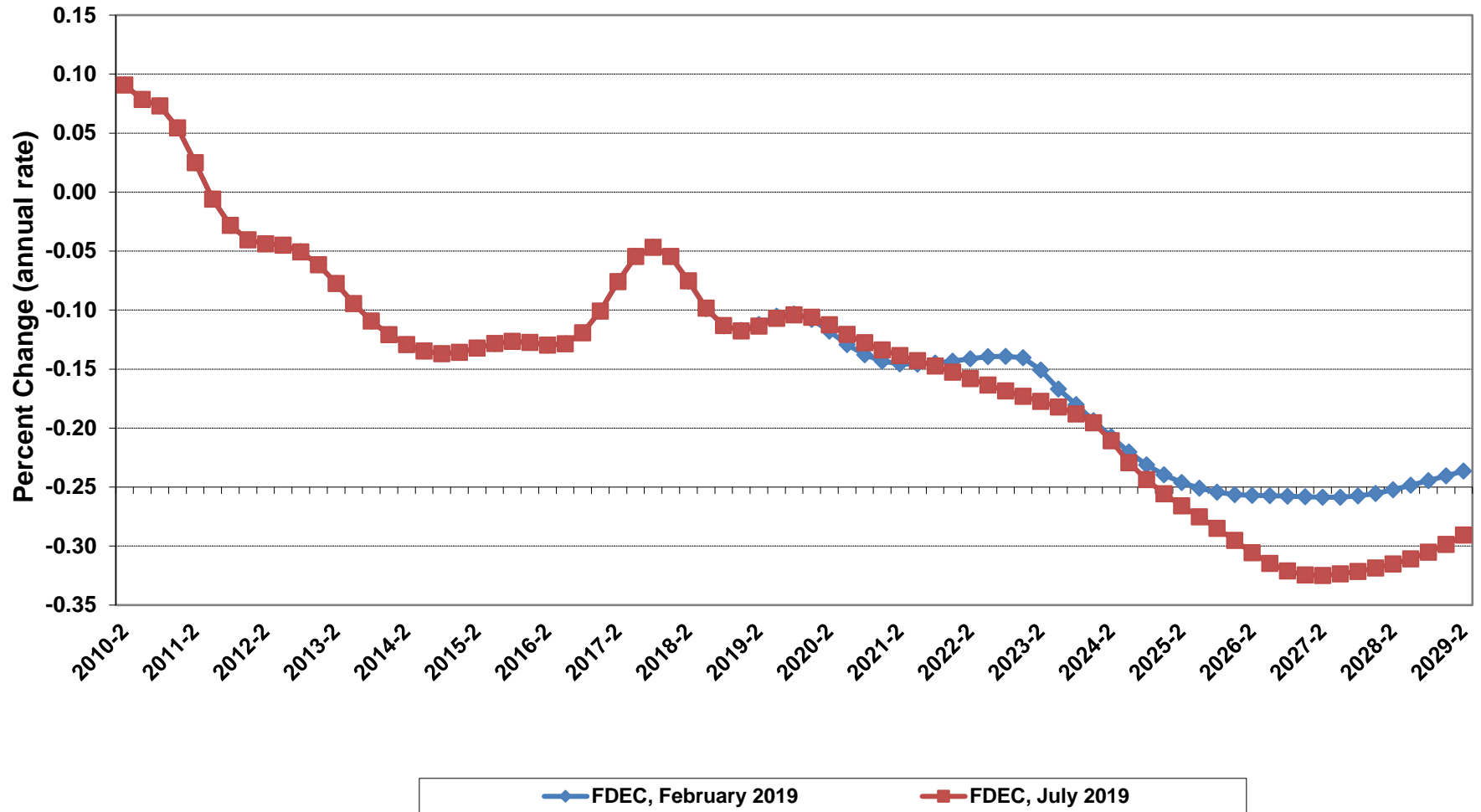
# Net Change In Florida Resident Households



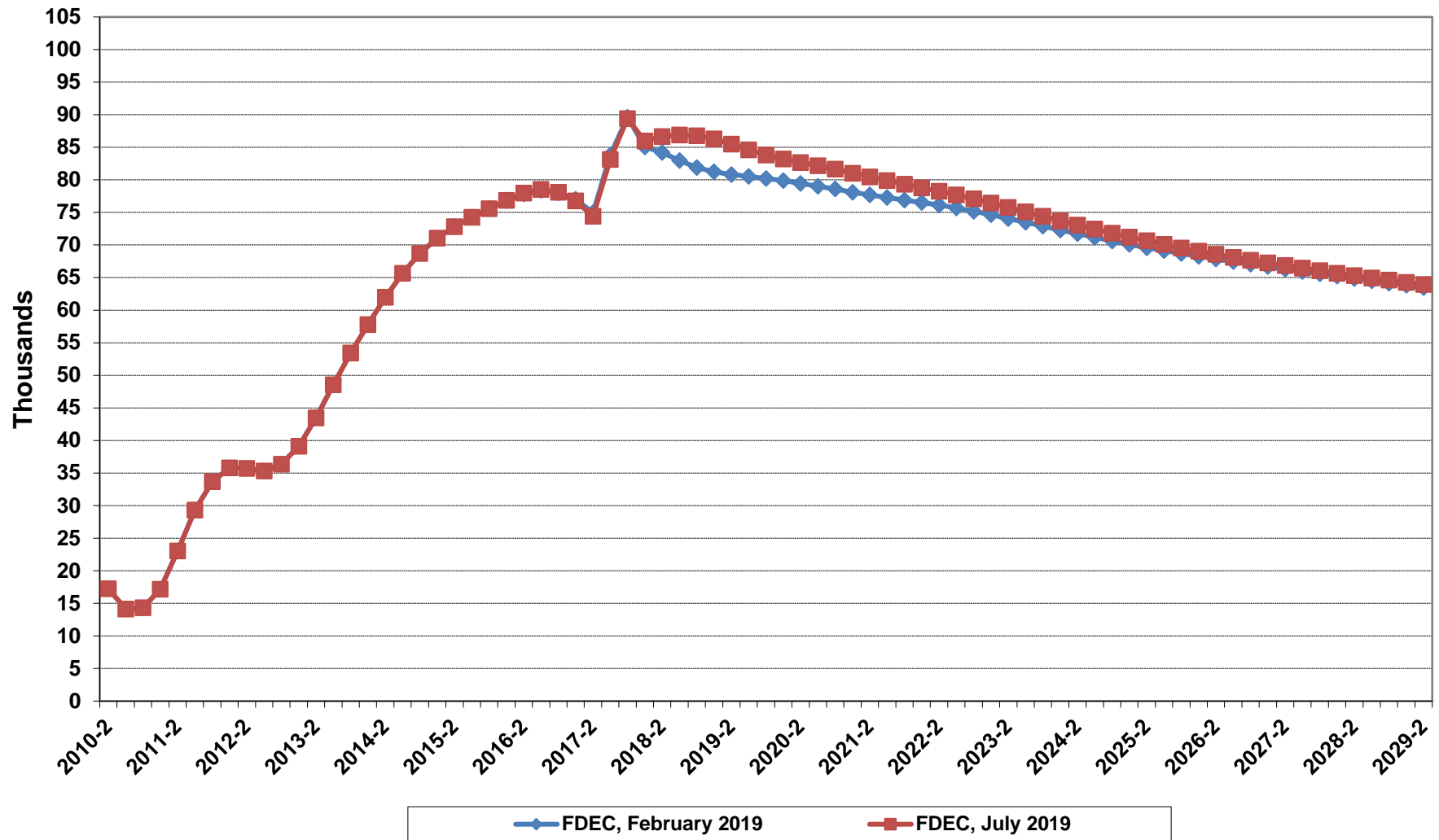
# Florida Average Household Size



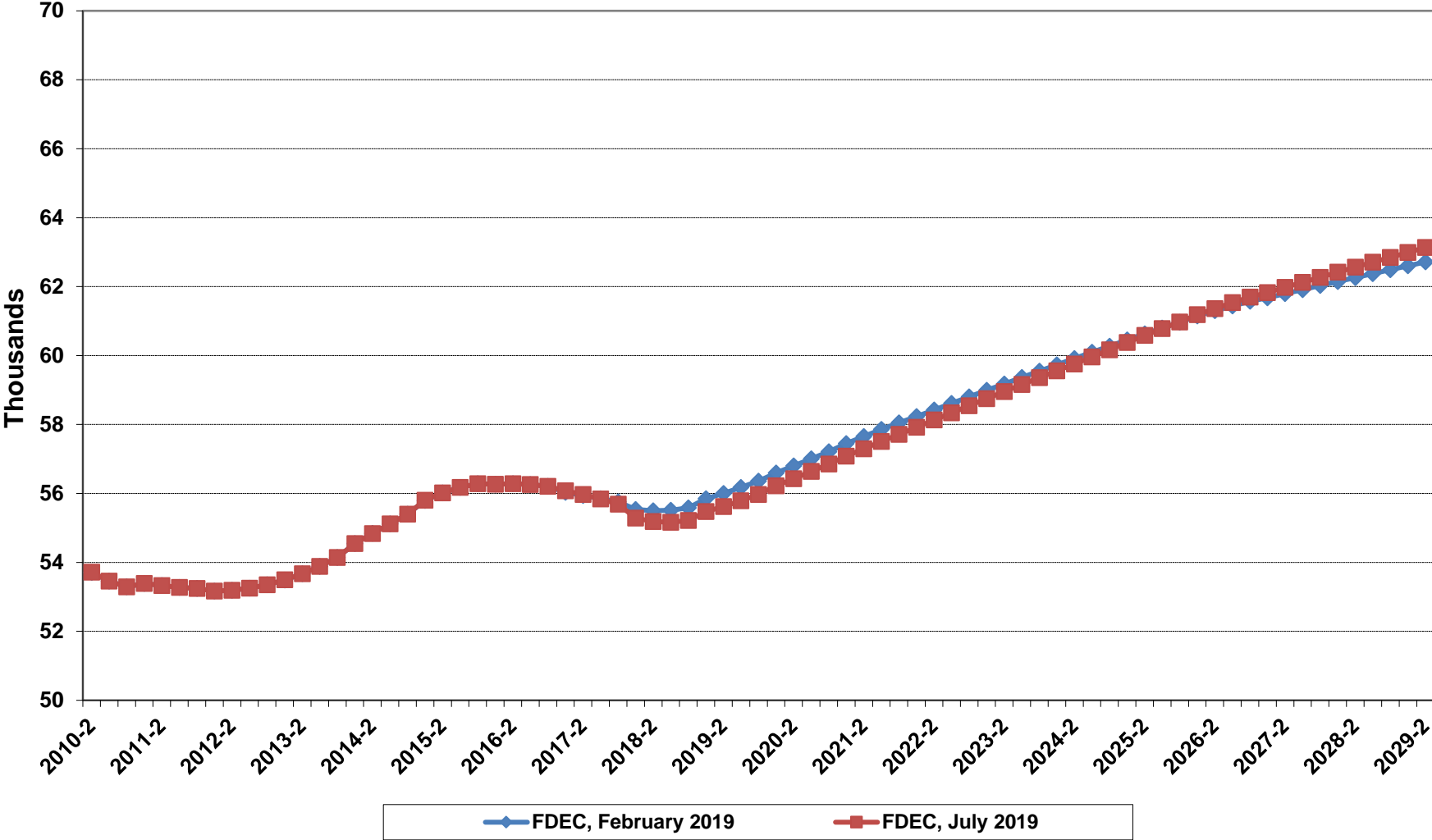
# Growth In Florida Household Size



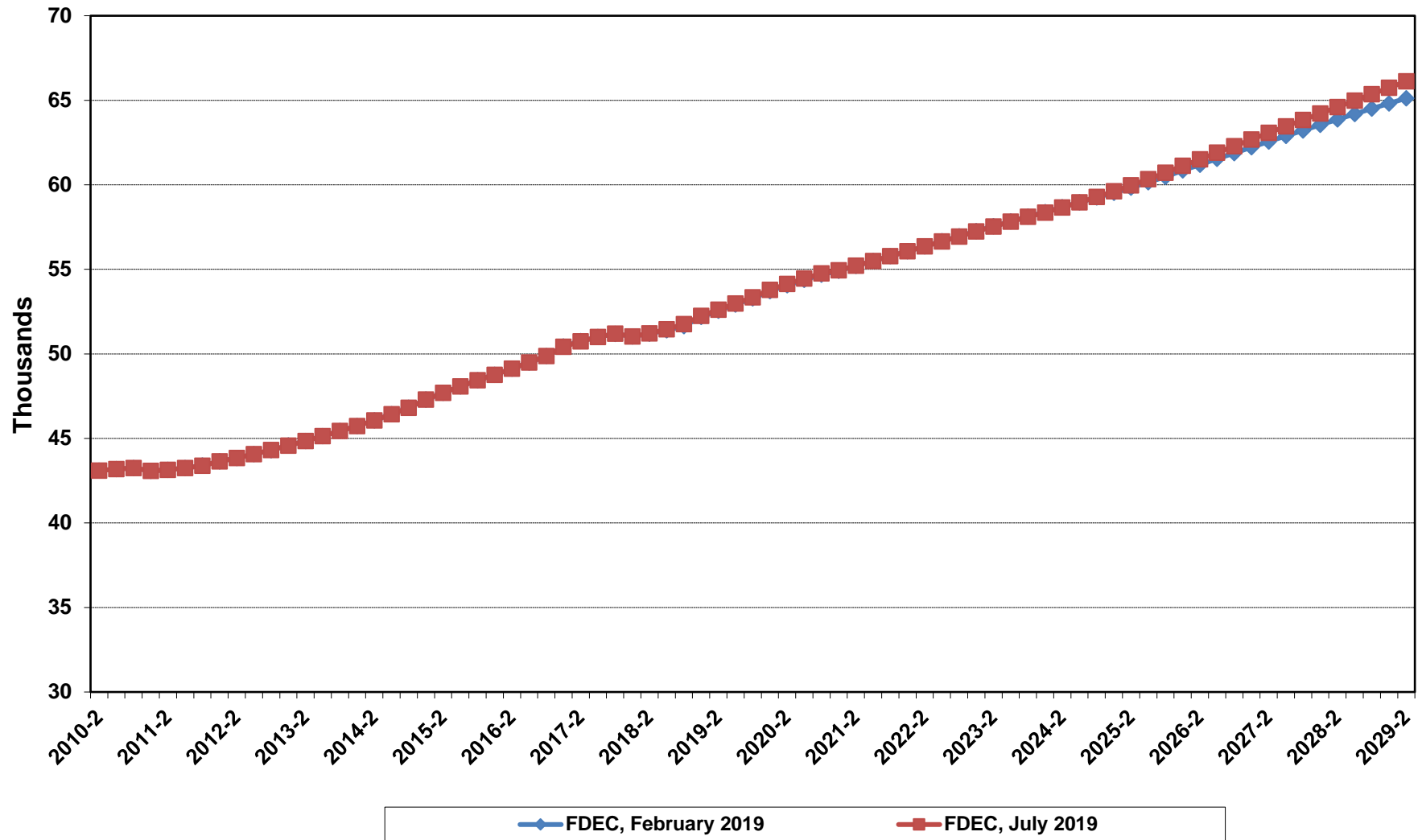
# Florida Net Migration



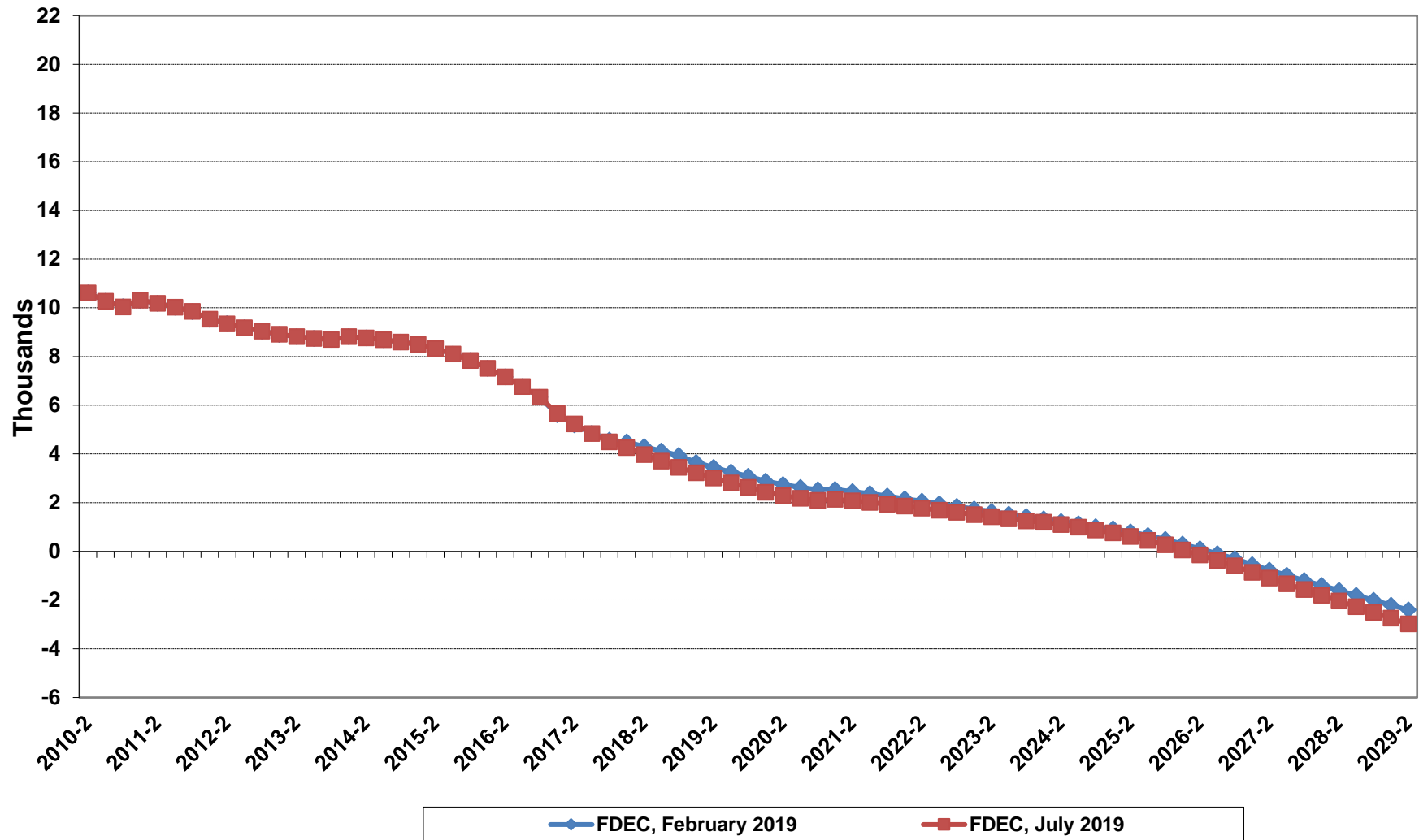
# Florida Resident Births



# Florida Resident Deaths

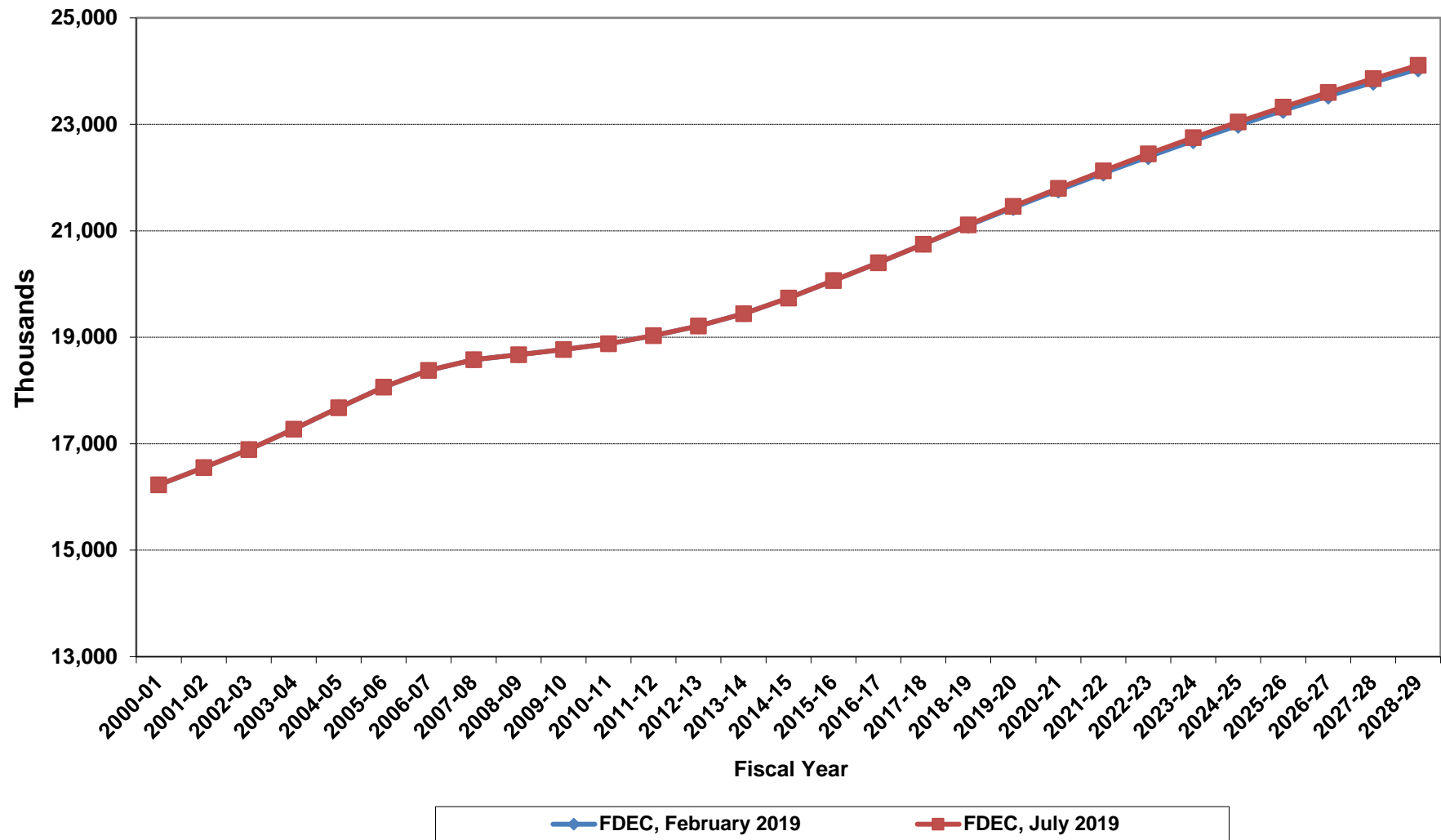


# Florida Net Natural Increase

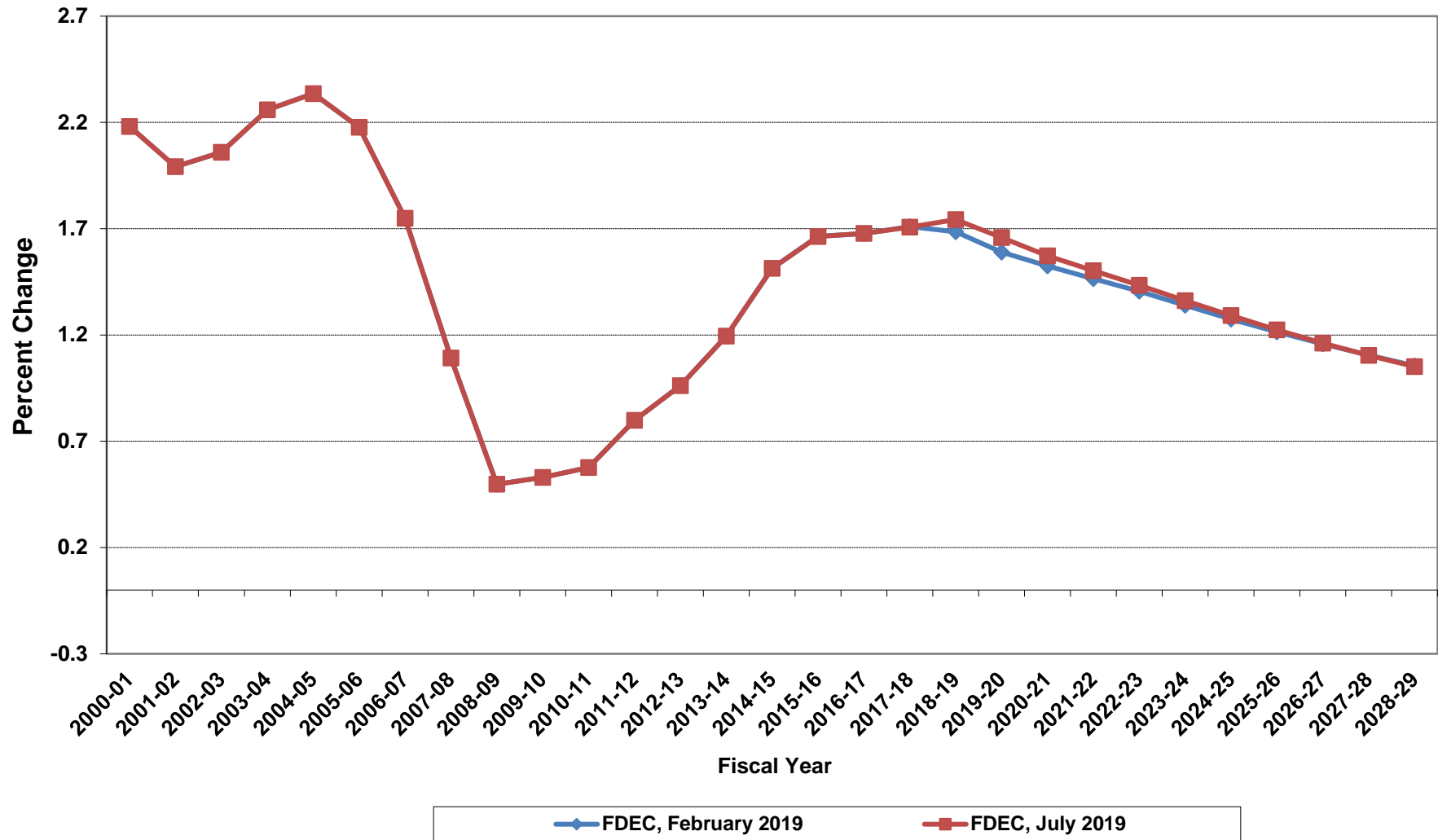




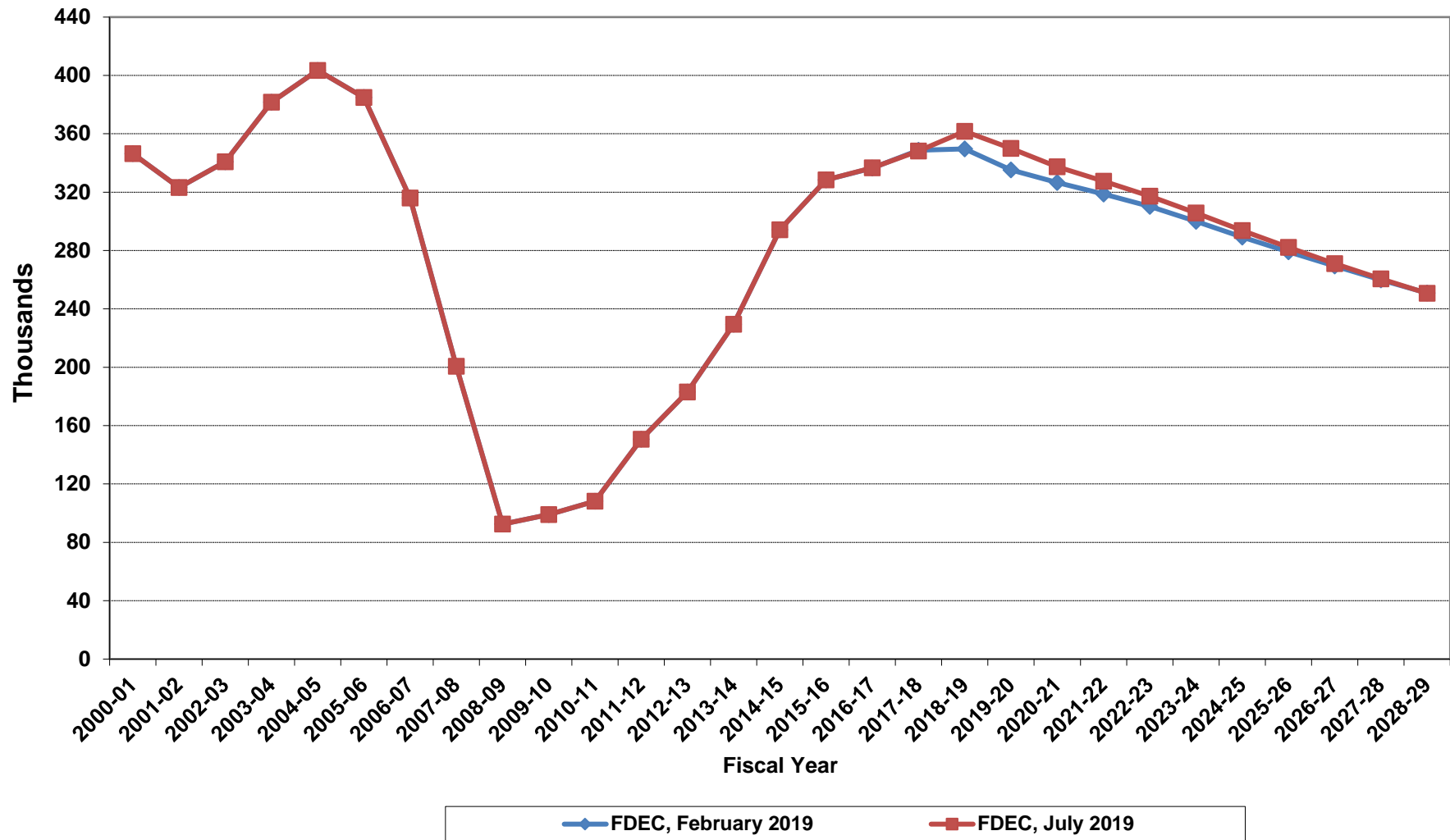
# Florida Resident Population



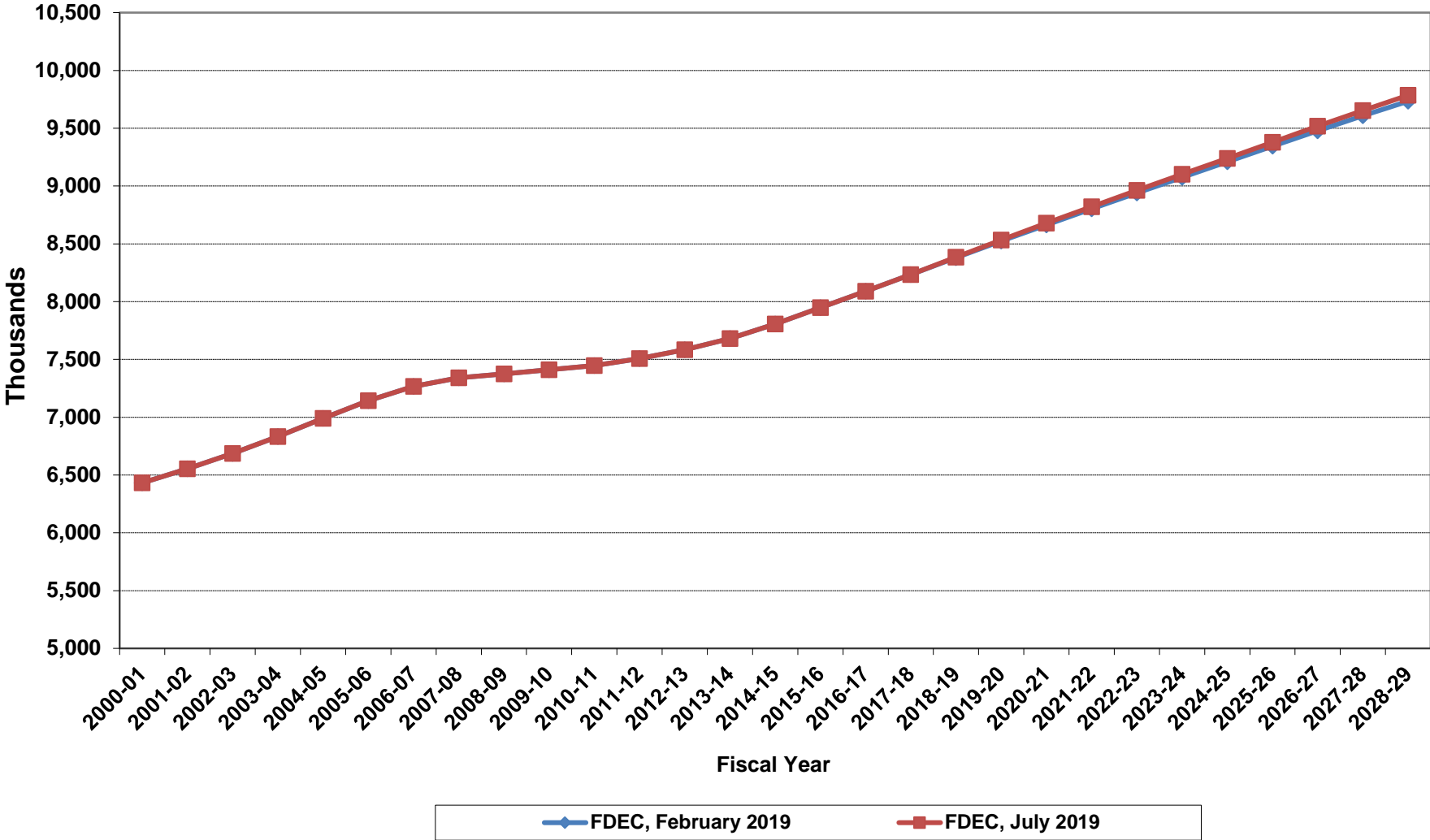
# Growth In Florida Resident Population



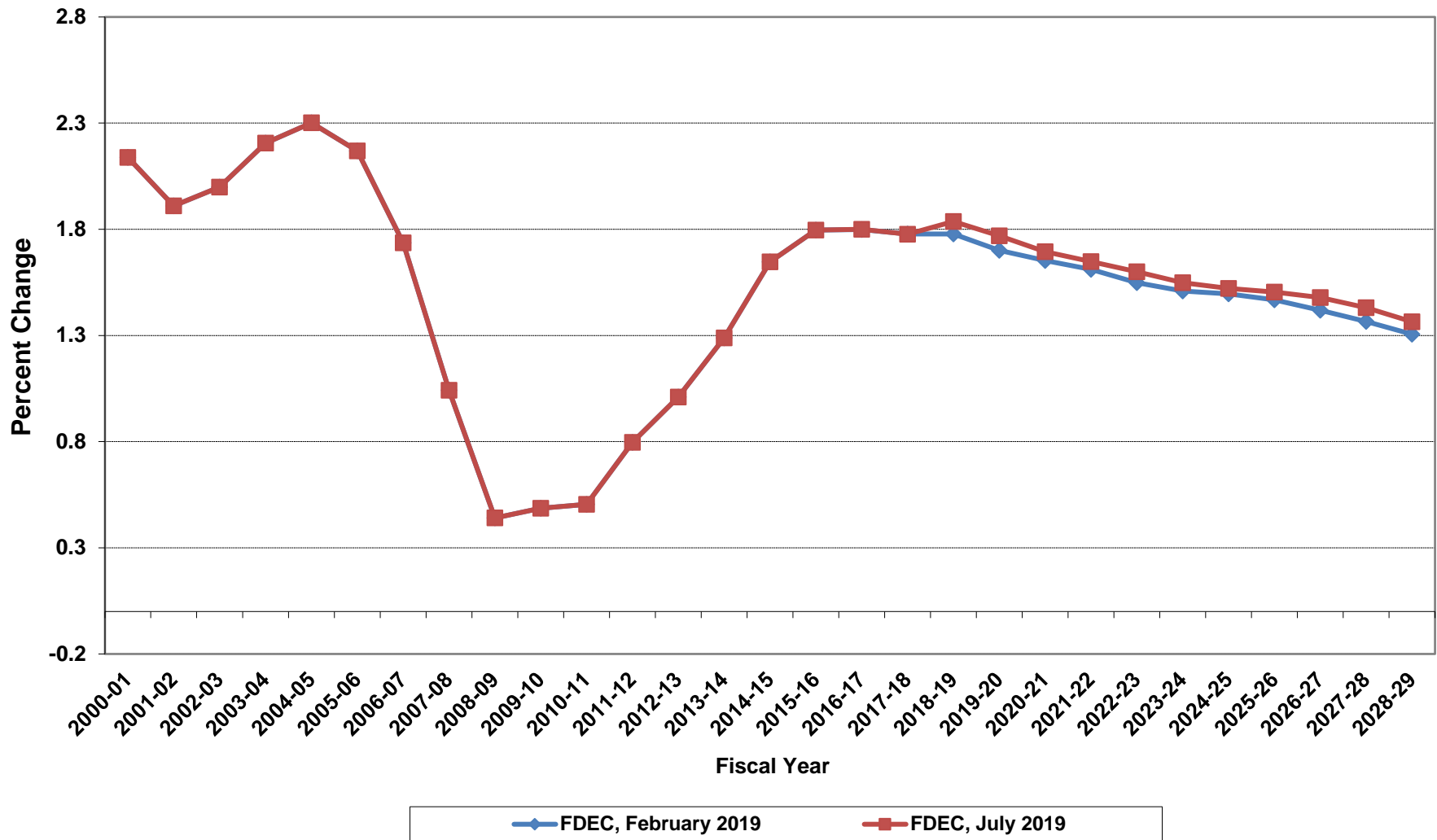
# Net Change In Florida Resident Population



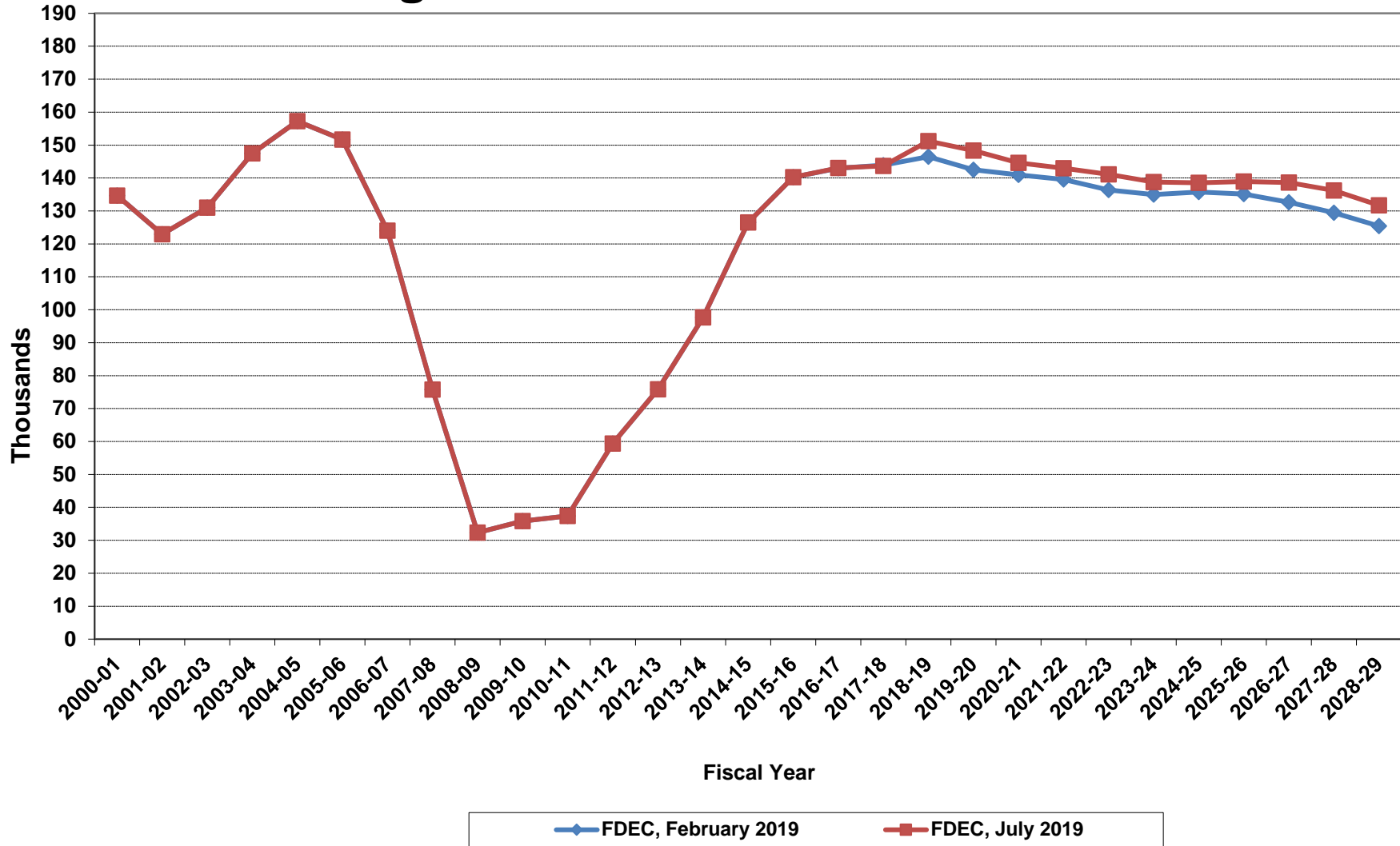
# Florida Resident Households



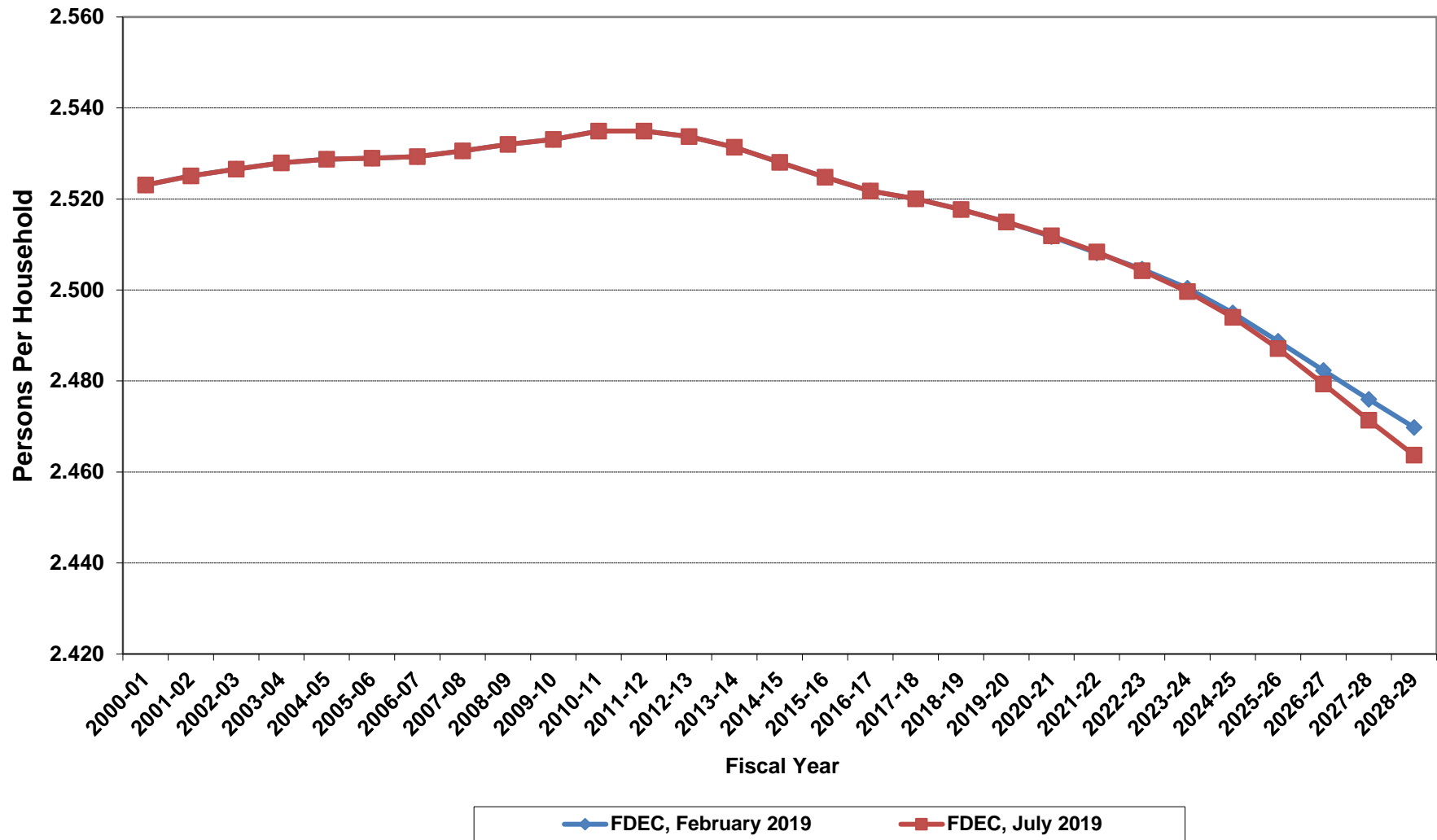
# Growth In Florida Resident Households



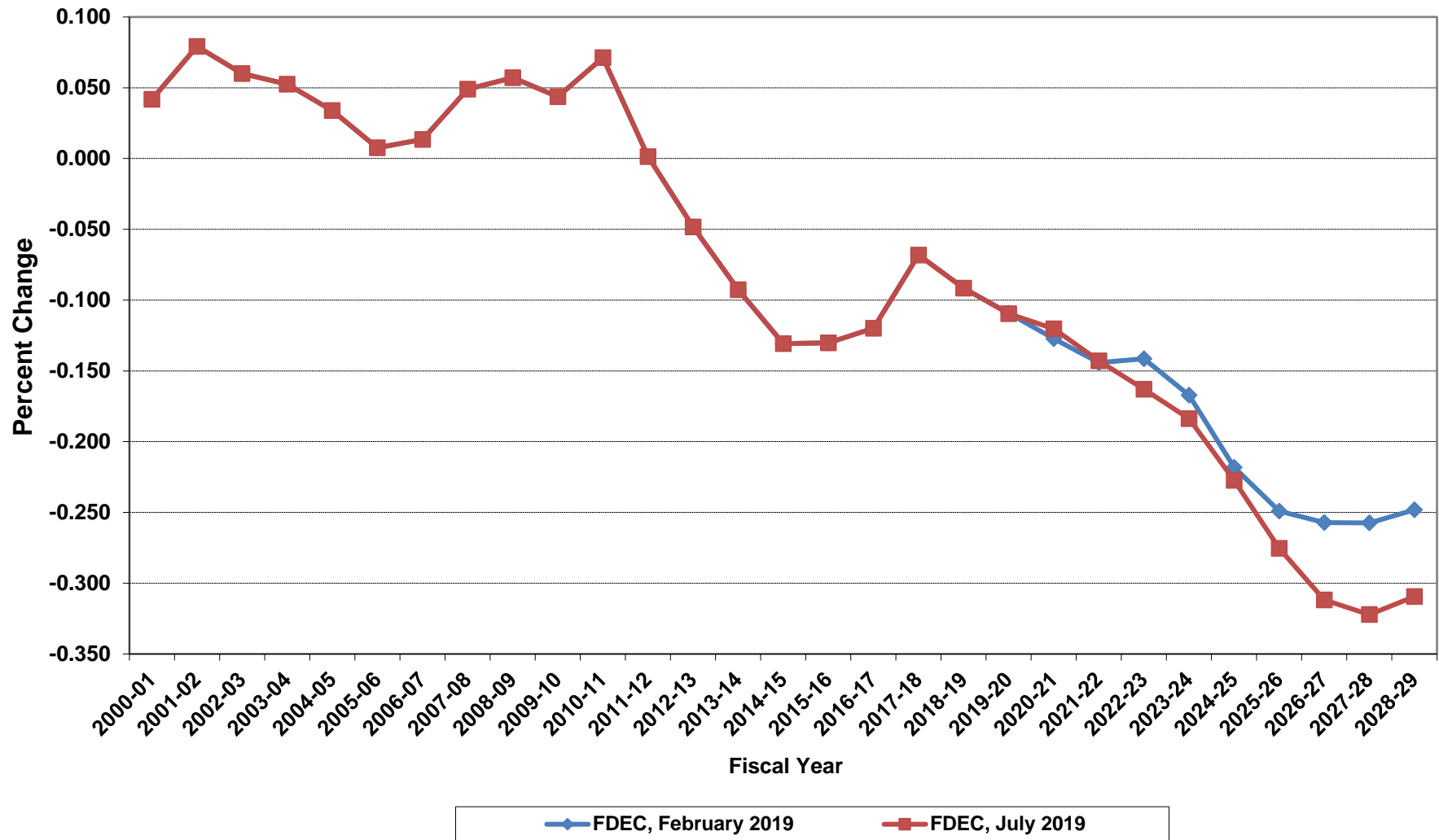
# Net Change In Florida Resident Households



# Average Florida Household Size

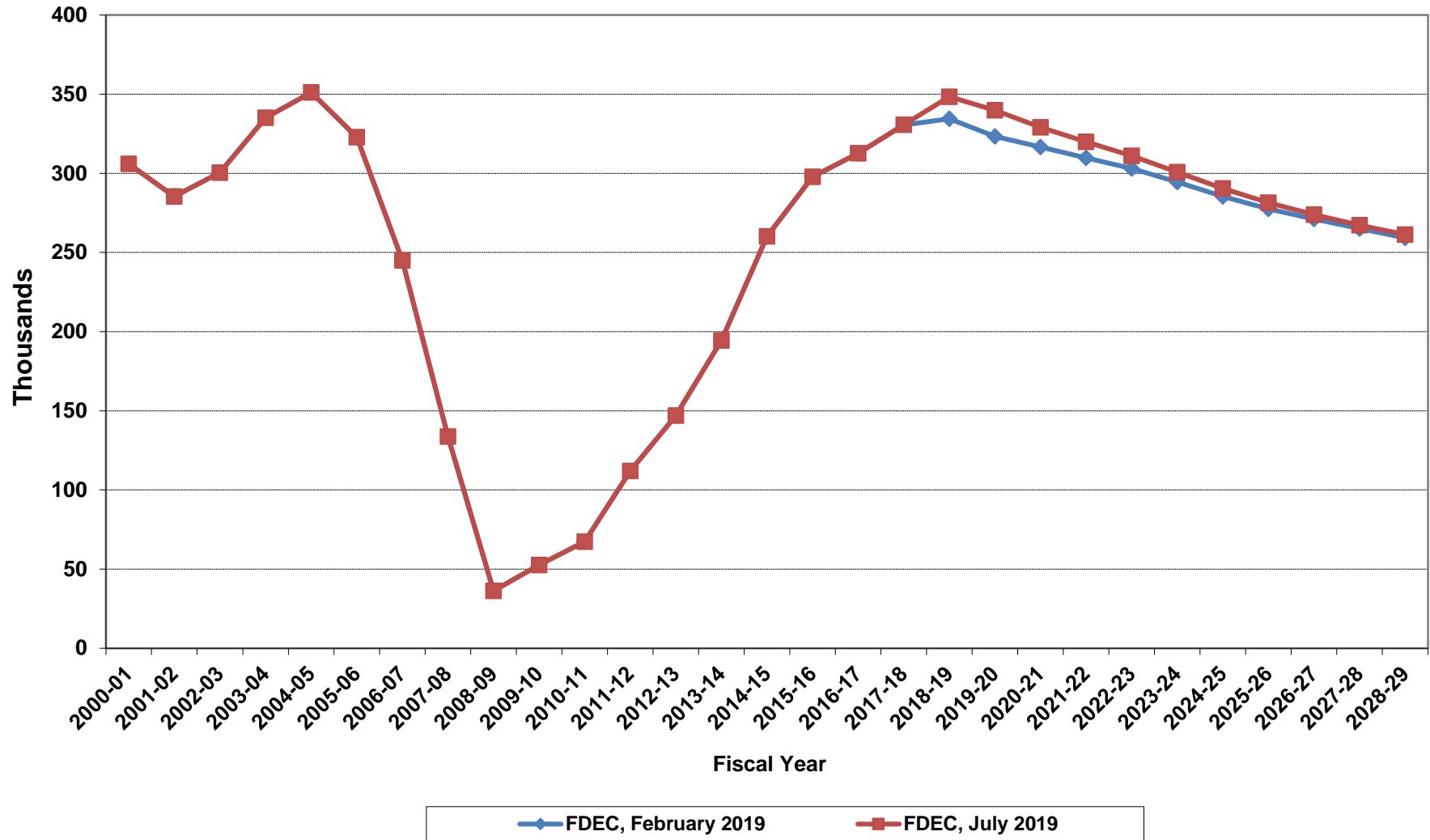


# Growth In Average Florida Household Size

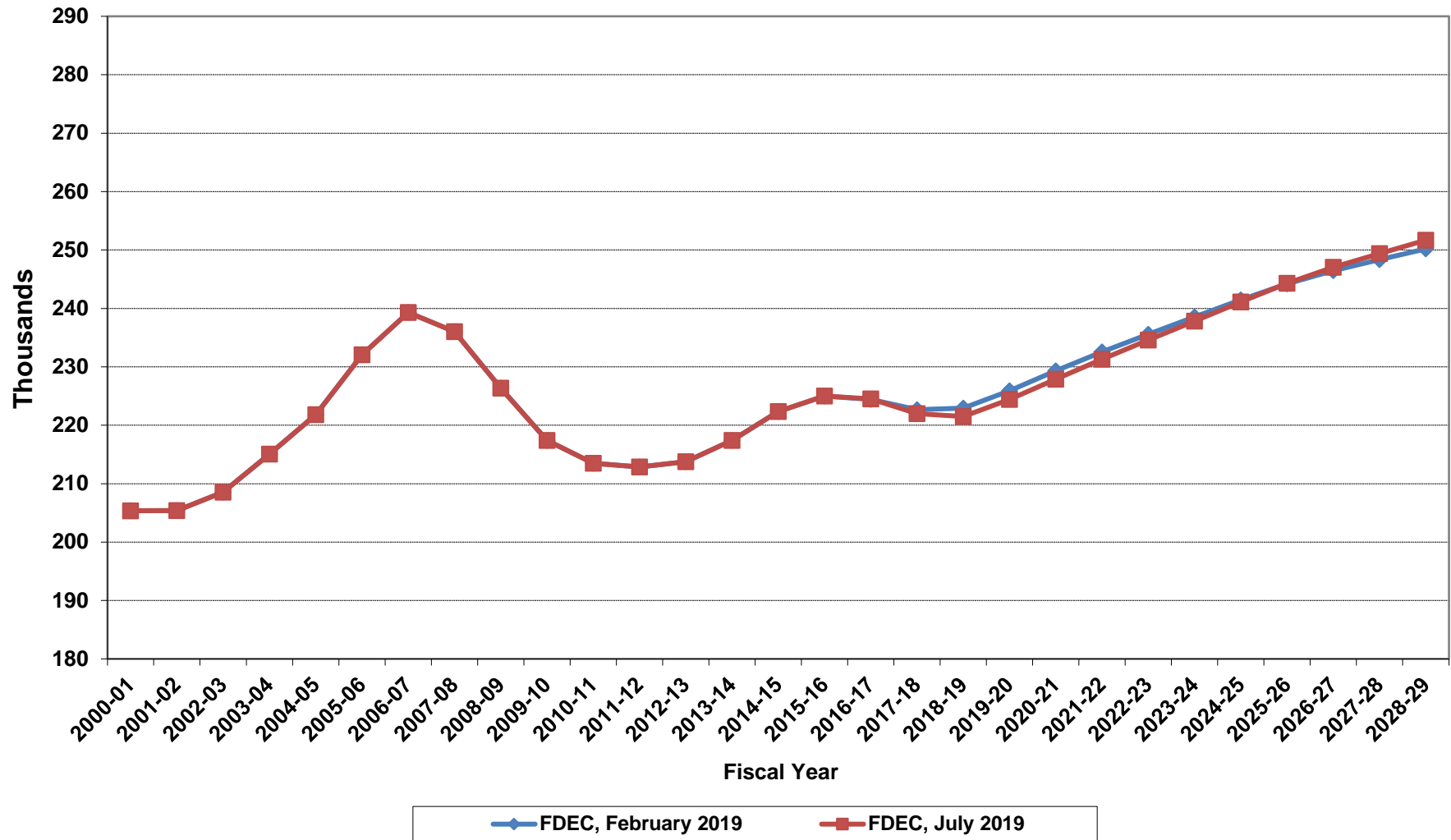




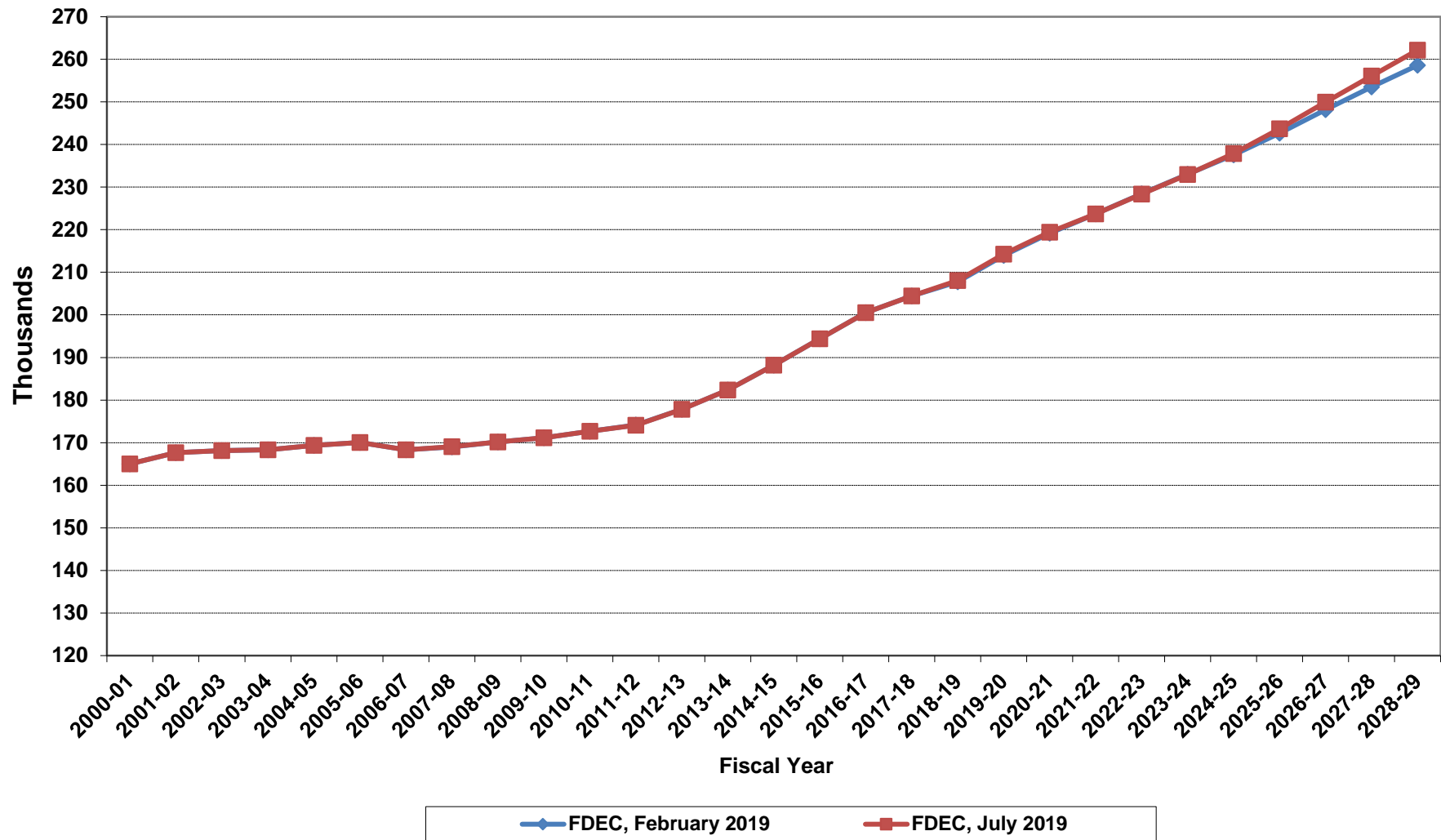
# Florida Net Migration



# Florida Resident Live Births



# Florida Resident Deaths



# Florida Net Natural Increase

