

Eliminate the digital divide in Flagler County



Background

- **Broadband Service** is any terrestrial technology having the capacity to provide transmission facilities that enable subscribers of the service to originate and receive high-quality voice, data, graphics, and video at the minimum rate of 25 megabits per second and 3 megabits per second upload for fixed service as defined by the Federal Communications Commission. Satellite and **mobile services** are not considered broadband service.

Background : Activities that require Broadband

| Activity | Minimum Download Speed (Mbps) |
|--|-------------------------------|
| General Usage | |
| General Browsing and Email | 1 |
| Streaming Online Radio | Less than 0.5 |
| VoIP Calls | Less than 0.5 |
| Student | 5 - 25 |
| Telecommuting | 5 - 25 |
| File Downloading | 10 |
| Social Media | 1 |
| Watching Video | |
| Streaming Standard Definition Video | 3 - 4 |
| Streaming High Definition (HD) Video | 5 - 8 |
| Streaming Ultra HD 4K Video | 25 |
| Video Conferencing | |
| Standard Personal Video Call (e.g., Skype) | 1 |
| HD Personal Video Call (e.g., Skype) | 1.5 |
| HD Video Teleconferencing | 6 |
| Gaming | |
| Game Console Connecting to the Internet | 3 |
| Online Multiplayer | 4 |

Affected Population

Residents of Rural Western Flagler County

- Approximately 1,879 households
- Approximately 4,171 citizens
- Approximately 21 local businesses

Layer Properties

General Source Selection Display Symbology Fields Definition Query Labels Joins & Relates Time HTML Popup

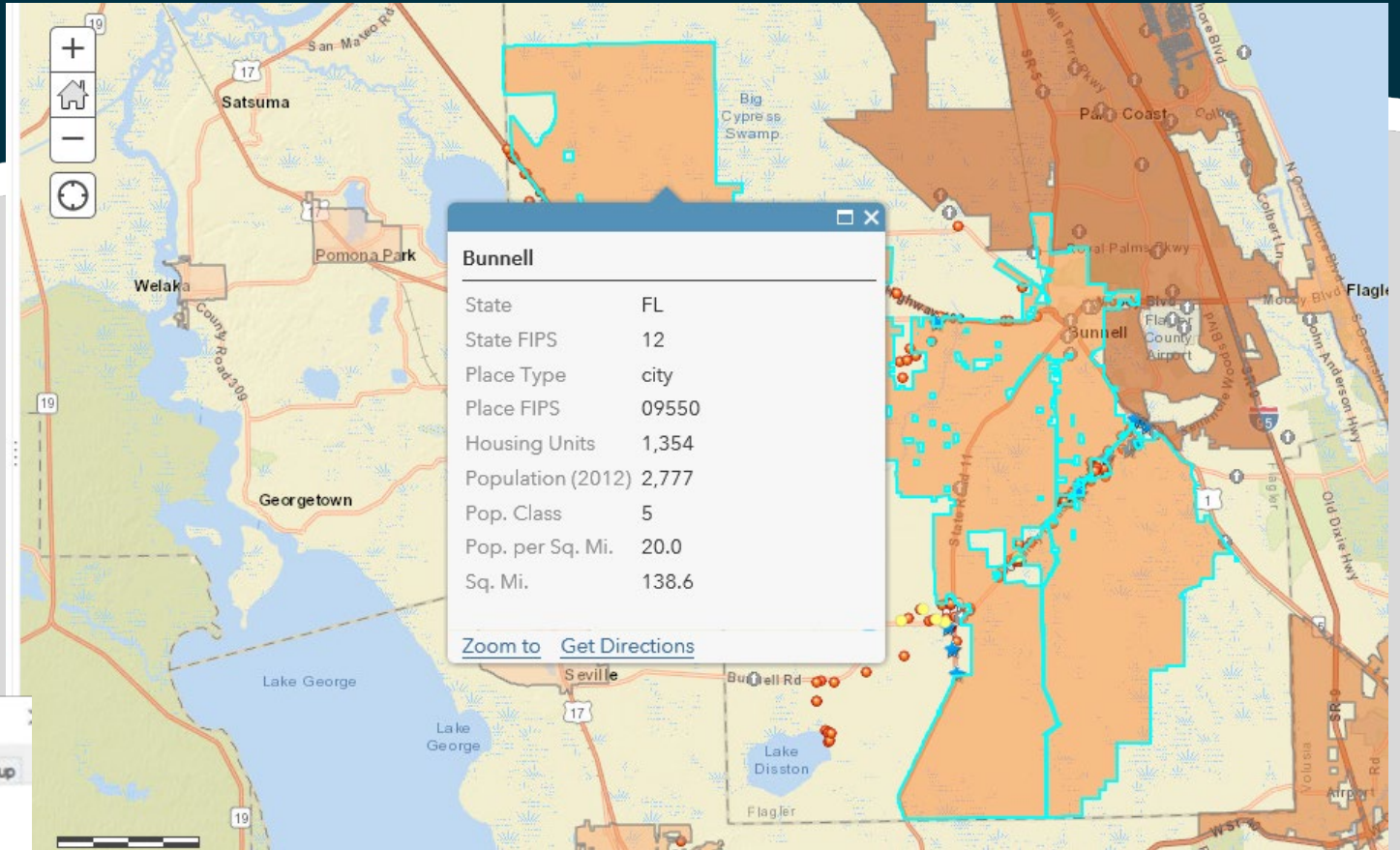
Show:

Draw categories using unique values of one field. Import...

Value Field: TYPE Color Ramp: [Color Ramp]

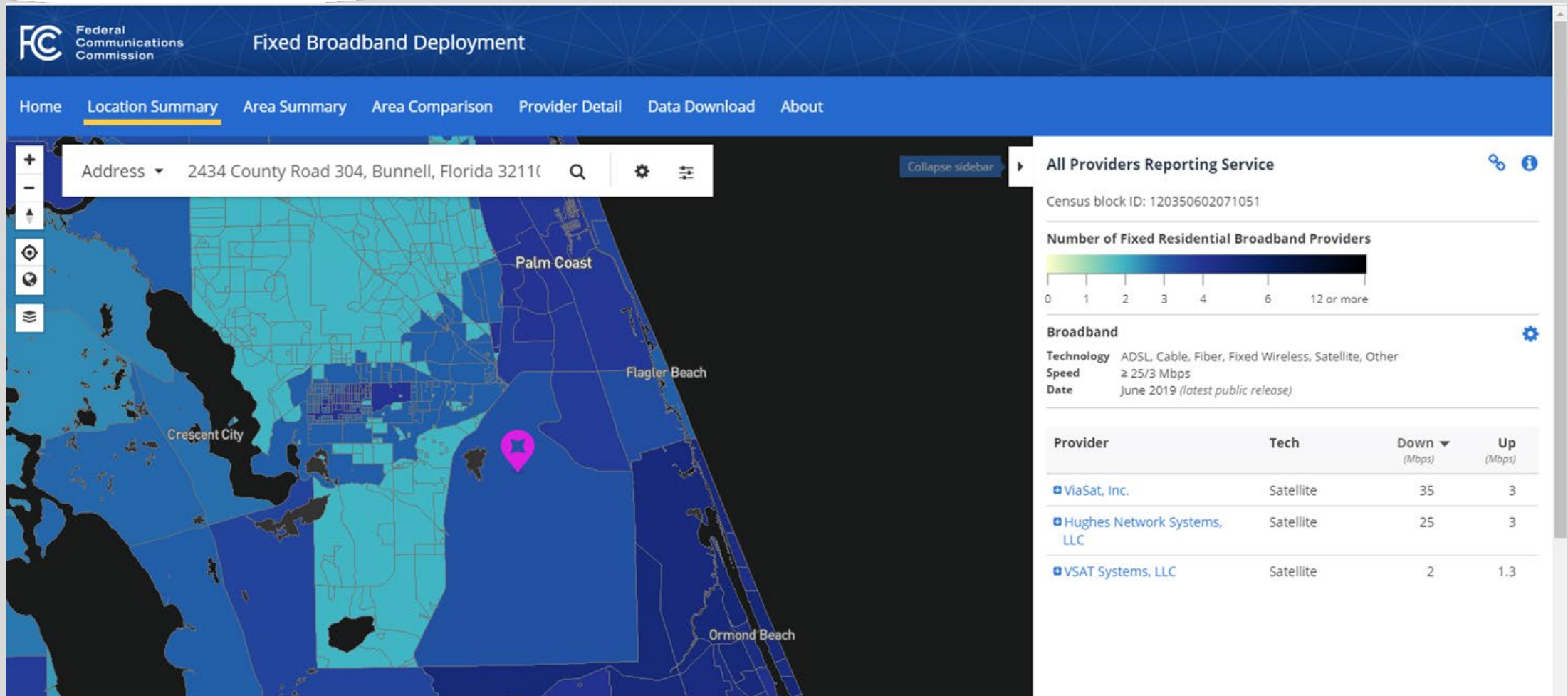
| Symbol | Value | Label | Count |
|--------|----------------------------|----------------------------|-------|
| ◆ | Residential | Residential | 1879 |
| ◆ | Commercial; Daycare; Lodgi | Commercial; Daycare; Lodgi | 626 |
| ◆ | Industrial | Industrial | 61 |
| ◆ | Other | Other | 56 |
| ◆ | Faith Based | Faith Based | 29 |
| ◆ | Health | Health | 29 |
| ◆ | Recreation | Recreation | 21 |
| ◆ | Government; Public Safety | Government; Public Safety | 24 |
| ◆ | Education | Education | 15 |
| ◆ | Tower; Utility | Tower; Utility | 20 |

Add All Values Add Values... Remove Remove All Advanced



This population does not have access to broadband internet leaving them at an extreme disadvantage

Broadband disbursement

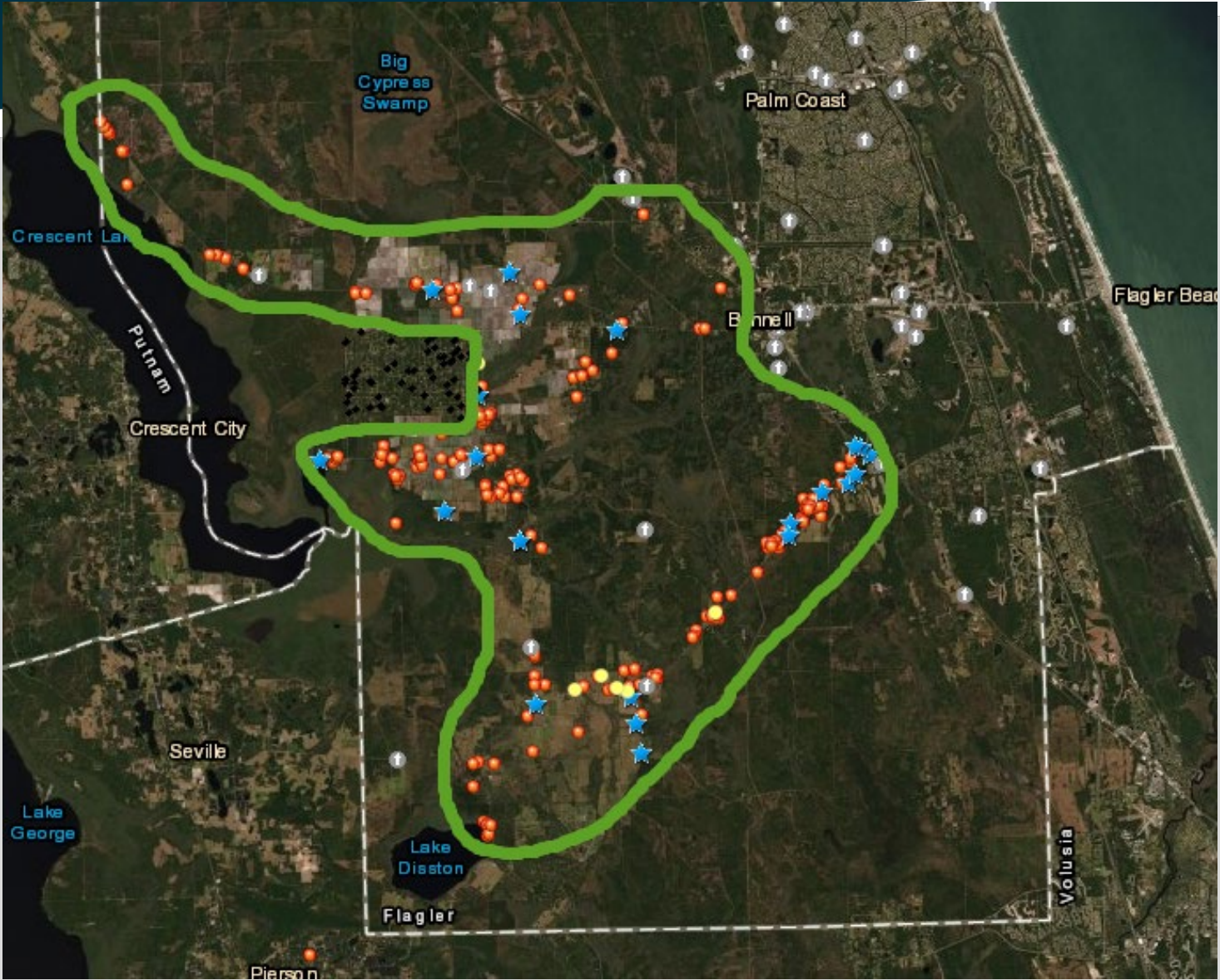


This population in the turquoise areas only option is slow, unreliable, expensive satellite internet

Negative Impacts

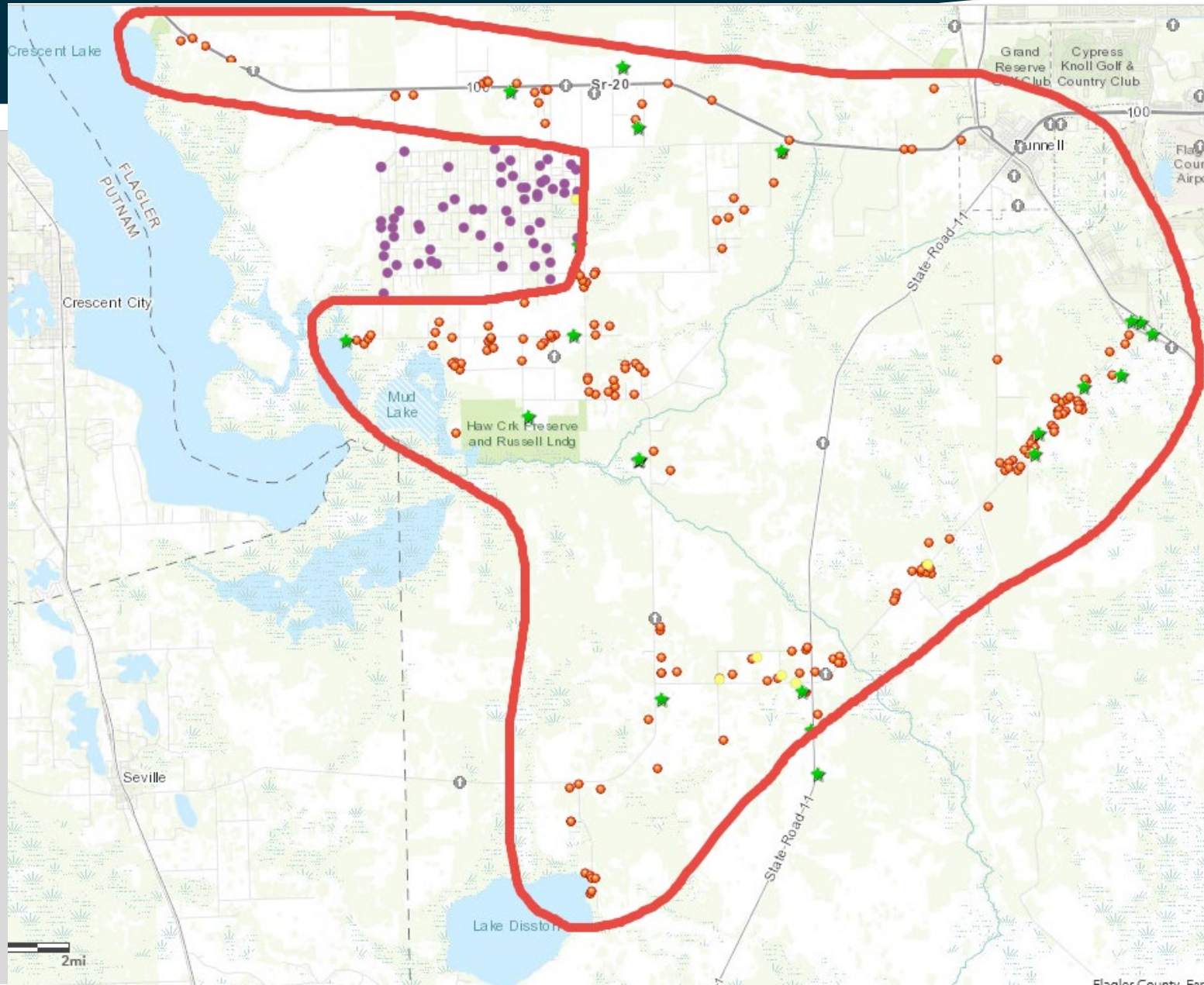
- **Disproportionate educational opportunities**
- **Lack of access to Telehealth**
- **Unreliable access to Emergency Services**
- **Negative impacts to small businesses**
- **Unequal job opportunities and growth**
- **Lack of infrastructure limits economic development**

Proposed Service Area



Proposed Funded Service Area

Serve a Proposed Funded Service Area (PFSA) in which Broadband Service does not exist;



USDA Connect Grant

Community Connect Grant Program

- Created in 2002
- Competitive Grant Program

Program Regulation and FOA:

- Community Connect Grant Program Regulation, 7 CFR 1739 Subpart A.
- Funding Opportunity Announcement (FOA), published September 24, 2020 on the Community Connect website and Grants.gov. The FOA sets the minimum and maximum grant amounts for the 2021 program as well as the broadband service speed and broadband grant speed.
- Minimum and Maximum Grant Amounts:
 - \$100,000 minimum
 - \$3,000,000 maximum

USDA Connect Grant

Review Standards

- Applications must be submitted by the December 23, 2020 (11:59 pm EST);
- Applications must be eligible and complete; and
- Applications must be technically and financially feasible.
- New for FY 2021, mapping information will be put out as a Public Notice Filing for potential existing service providers to contest the eligibility of an application. Any information received will be verified by RUS and may be rejected if found to not be supportable.
 - Applications passing Steps 1 - 4 will be evaluated competitively based on the three scoring components.
 - Applications will be ranked and awarded in rank order until all grant funds are expended.
 - Awards announced.

Application Processing

Review Standards

- Applications must be submitted by the December 23, 2020 (11:59 pm EST);
- Applications must be eligible and complete; and
- Applications must be technically and financially feasible.
- New for FY 2021, mapping information will be put out as a Public Notice Filing for potential existing service providers to contest the eligibility of an application. Any information received will be verified by RUS and may be rejected if found to not be supportable.
 - Applications passing Steps 1 - 4 will be evaluated competitively based on the three scoring components.
 - Applications will be ranked and awarded in rank order until all grant funds are expended.
 - Awards announced.

Scoring

Up to 100 points are available. These points are broken into 3 Scoring Components:

- PFSA Needs (up to 50 points are available)
- Stakeholder Involvement (up to 40 points are available)
- Management Experience (up to 10 points are available)

SPECIAL CONSIDERATION AREA POINTS ARE NOT PART OF THE 2021 PROGRAM

APPLICANTS MAY SUBMIT MORE THAN ONE APPLICATION, HOWEVER, ONLY THE SINGLE HIGHEST SCORING ELIGIBLE APPLICATION WILL BE CONSIDERED FOR AWARD

