

# BULOW CREEK

## HEADWATERS REGIONAL PARK



FLAGLER COUNTY, FL

---

PUBLIC WORKSHOP #2

February 3, 2026



# Tonight's Agenda

1

Reviewing  
work and input  
to date

2

Overview of  
proposed  
improvements

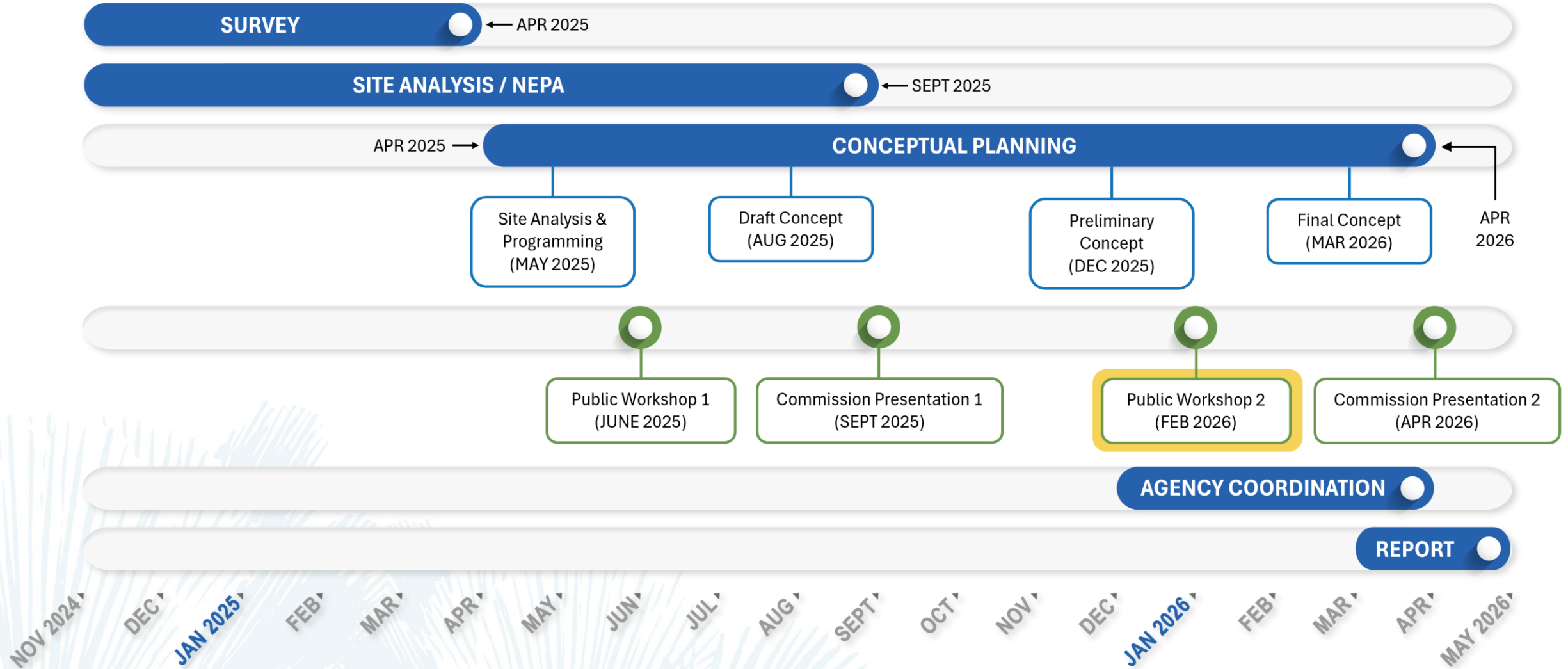
3

Presenting  
planning  
phase  
progress

4

Gaining  
input

# PROJECT PROCESS – PLANNING STAGE



# Project Boundary

- 1,160-acre existing Flagler County Preserve
- Headwaters of Bulow Creek
- Old Kings Elementary School to the west
- Polo Club to the south

## LEGEND

-  Project Site
-  Parcels



# Surrounding County Projects





## Existing Parks and Trails

- SR 100 Pedestrian Bridge
- Graham Swamp Preserve
- Leigh Trail
- Bulow Ruins and Bulow State Park

## Future Parks and Trails

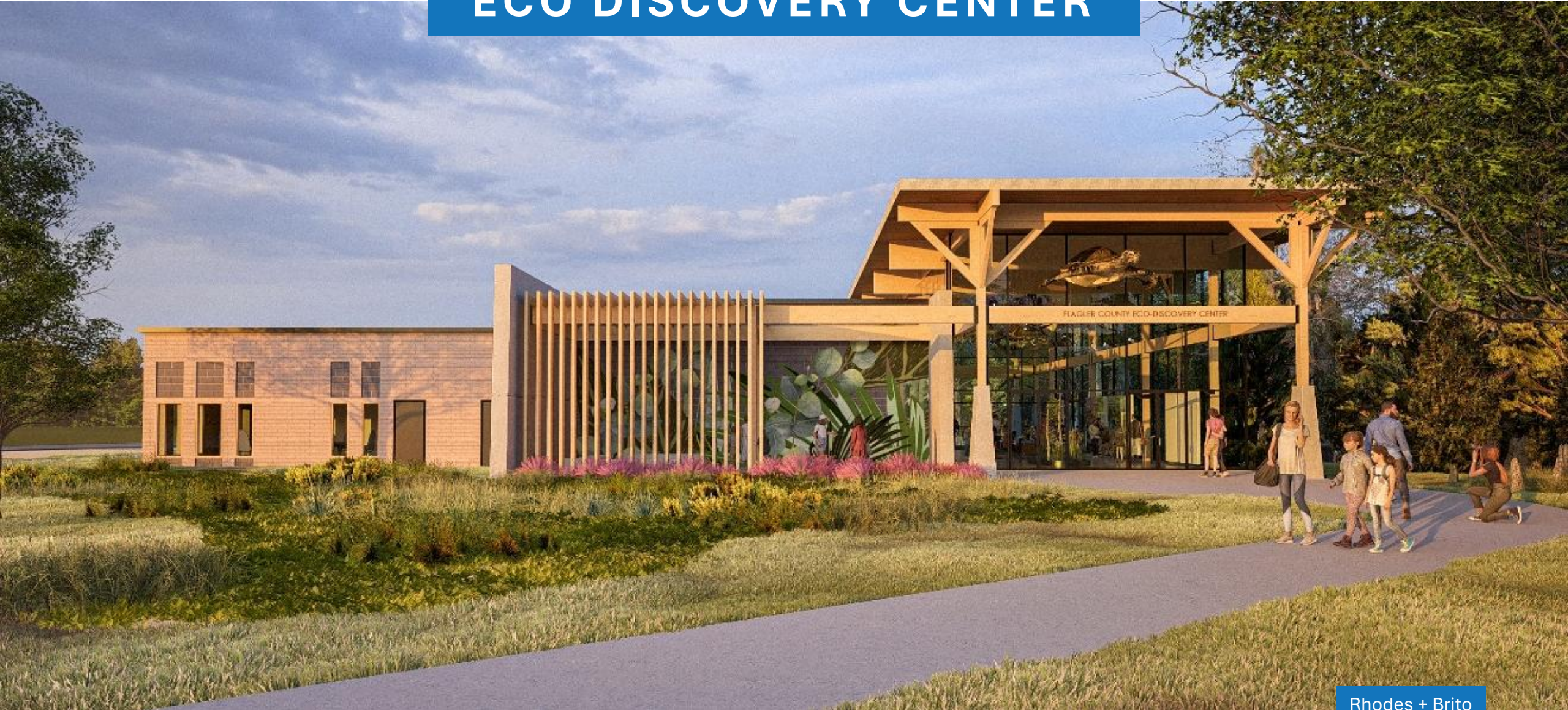
- BCHRP
- Old Kings Highway Multiuse Trail
- Future Graham Swamp Multiuse Trail Extension
- Eco Discovery Center
- Eco Discovery Trailhead

## LEGEND

-  Existing Parks and Trails
-  Eco Discovery Center
-  Currently Planned Future Parks and Trails
-  County Boundaries








# ECO DISCOVERY CENTER



Rhodes + Brito

# Surrounding Developments

## LEGEND

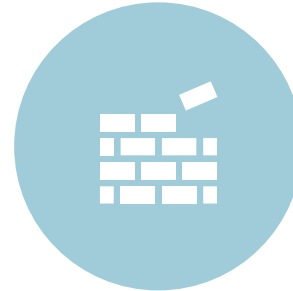
-  Existing Parks and Trails
-  BCHRP
-  Developments
-  Potential Forever Conservation
-  County Boundaries



# Project Goals



Manage as a nature preserve



Celebrate the area's cultural history



Become a regional destination for resource-based, passive recreation

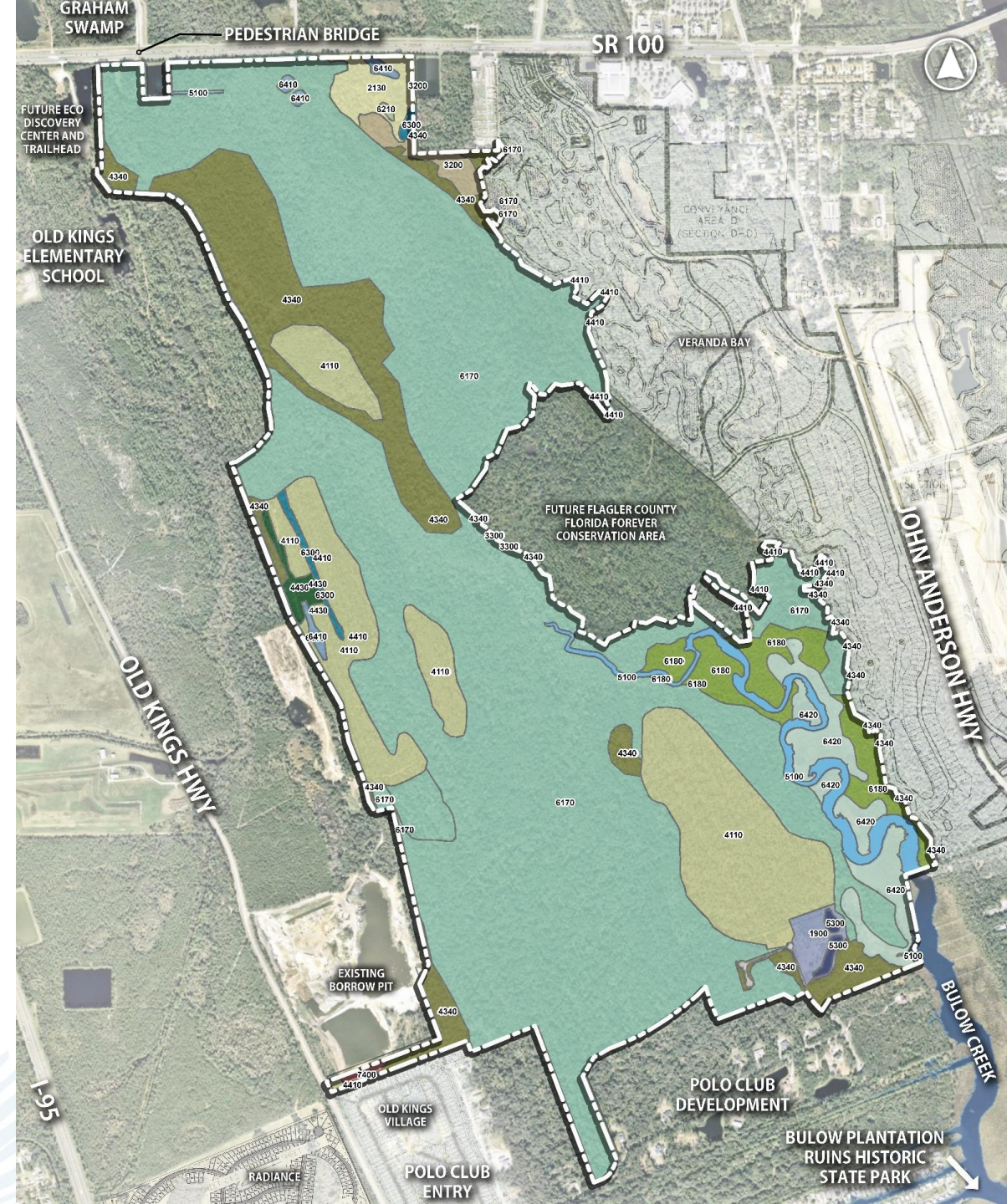


Support the County's overall tourism and economic development mission

# Natural Communities

## LEGEND

-  Project Site
-  Cabbage Palm Hammock
-  Cypress
-  Disturbed Land
-  Forest Regeneration
-  Freshwater Marsh
-  Mixed Forested Wetland
-  Mixed Hardwood Wetland
-  Open Land
-  Pine Flatwoods
-  Reservoirs - Pits, Ponds, Damned Systems
-  Saltwater Marsh
-  Shrub and Brushland
-  Streams and Waterways
-  Upland Mixed Coniferous/Hardwood
-  Woodland Pastures



# Natural Communities



**CABBAGE PALM HAMMOCK**



**SHRUB AND BRUSHLAND**



**PINE FLATWOODS**



**SALTWATER MARSH**

# Wetlands

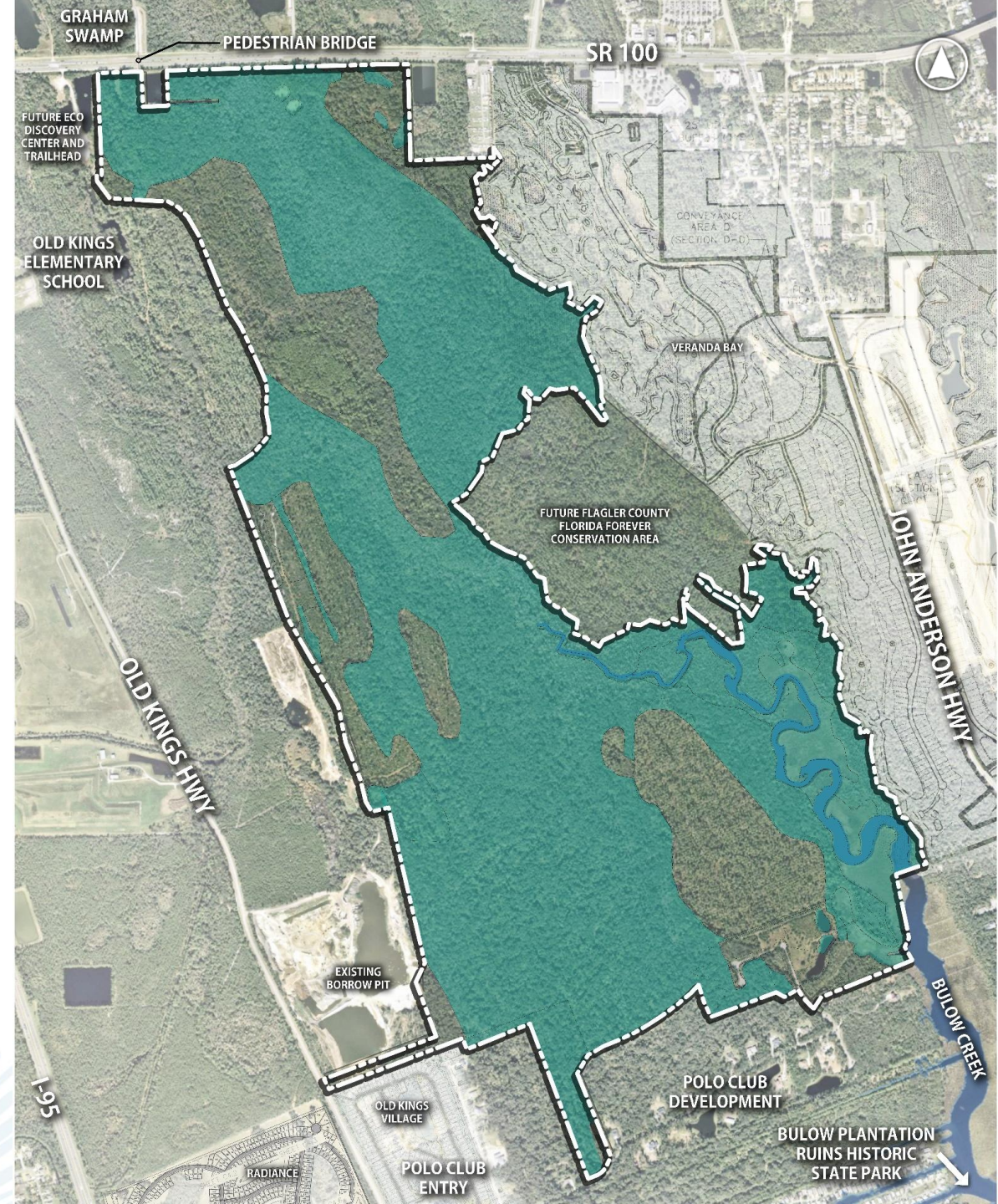
## LEGEND



Project Site



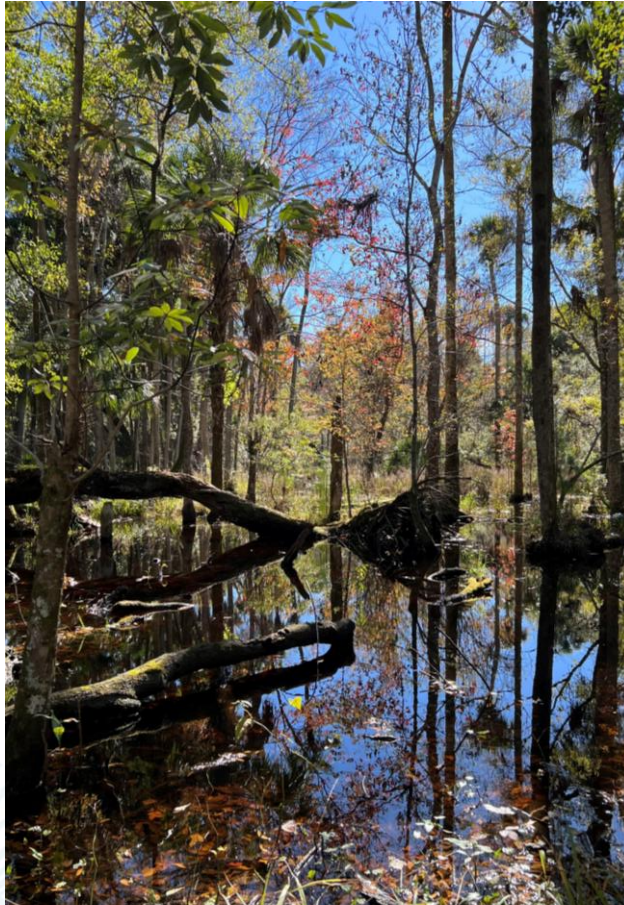
Wetlands



# Wetlands



**BULOW CREEK EDGE**



**BULOW CREEK HEADWATERS**



**BULOW CREEK SALT MARSH**



**LOW MIXED HARDWOOD FOREST**

# Conservation Easements

## LEGEND



**Project Site**



**Easement, Conservation (Wetland Mitigation):**  
From Flagler County to St. Johns River Water Management District



**Easement, Conservation (Wetland Mitigation):**  
From Lighthouse Development Group Inc. (now Polo Club) to St. Johns Water River Water Management District



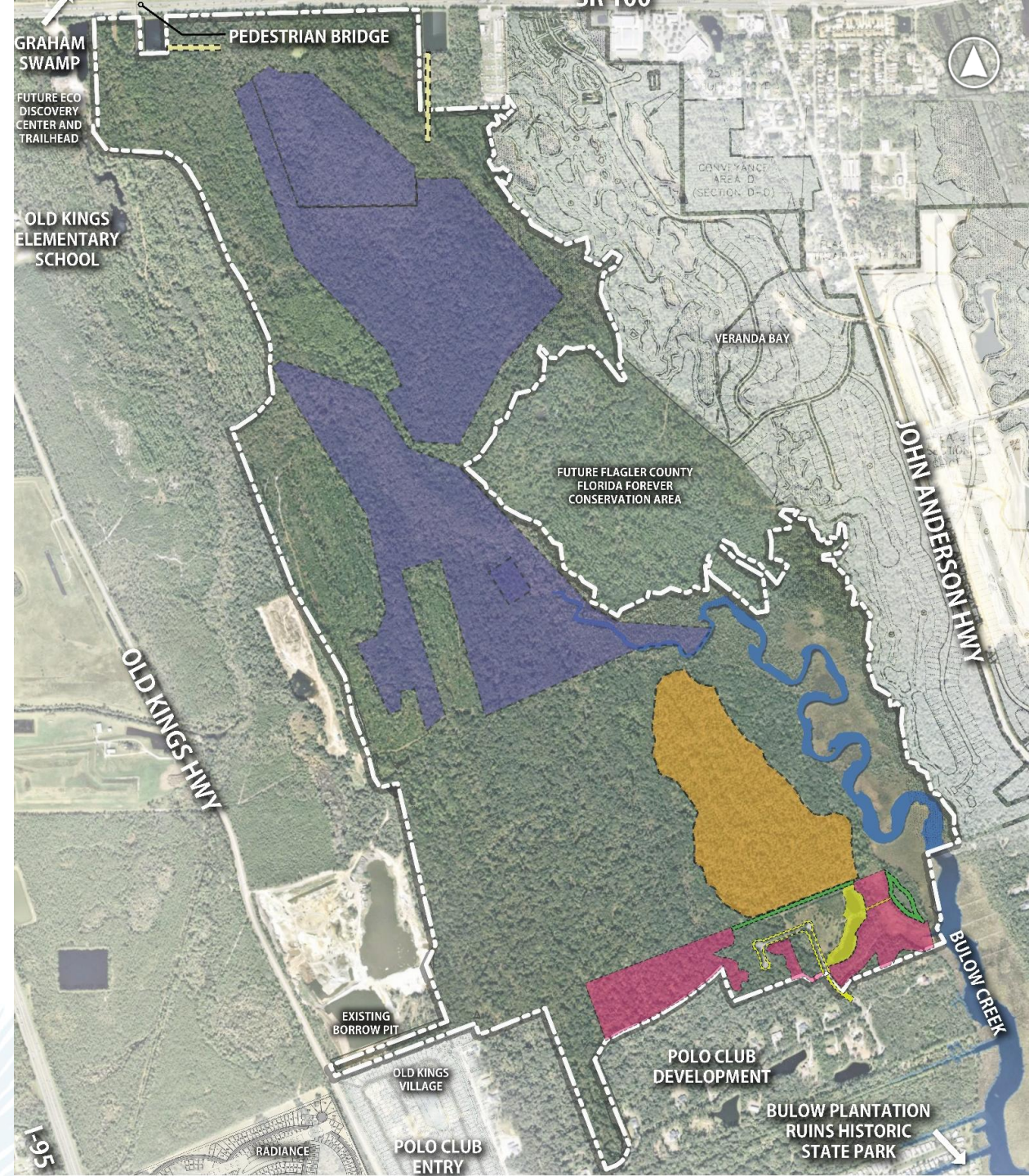
**Easement, Conservation (Gopher Tortoise Preserve):**  
From Flagler County to Florida Fish and Wildlife Conservation Commission



**Easement, Non-Conservation & Varied:**  
As established within the Plat of Sweetbottom Plantation (Polo Club and including access, utility, and stormwater easements)



**Easement, Non-Conservation**  
From Corprop A&F or ITT Community Development Corporation to FDOT (Drainage and Access)



1887 Flagler County Princess Place



# Cultural Resources

- Pre 1500-1800: Timucua and Seminole Native American Villages
- Early 1800s: Sugar Plantations
- 1835-1842: Second Seminole War
- 1880s: 'Settling' Era
- 1916: Old Brick Road

1916 Old Brick Road Remnant



1823 Bulow Creek Ruins State Park

# Proposed Improvements

**TRAILS**

**TRAILHEAD**













**WATER ACCESS**

**WILDLIFE OBSERVATION  
AND ENVIRONMENTAL  
EDUCATION**

**ECOSYSTEM  
ENHANCEMENT AND  
RESTORATION AREAS**

# Preliminary Master Plan



-  Project Site
-  Easements
-  Wetlands
-  Entry Drive (At-grade, asphalt)
-  Future Old Kings Hwy Multiuse Trail
-  Multiuse Trail (At-grade, asphalt, 12')
-  Multiuse Boardwalk (Elevated, 13'-6")
-  Pedestrian Boardwalk (Elevated, 6')
-  Unpaved Trail (At-grade, 3')
-  Trailhead
-  Waterfront Access
-  Wildlife Observation

# Proposed Improvements

## TRAILHEAD



# Proposed Improvements

## TRAILHEAD



## VIEW KEY



# Proposed Improvements – Trailhead, Existing Parks



Bulow State Park Pavilion



Bulow Sugarmill Ruins State Park



Flagler County Princess Place House



Flagler County Princess Place Pavilion



Flagler County Leigh Trailhead



# Proposed Improvements – Trailhead



**PICNIC PAVILIONS**



**RESTROOMS**



**PARKING**

# Proposed Improvements – Trails



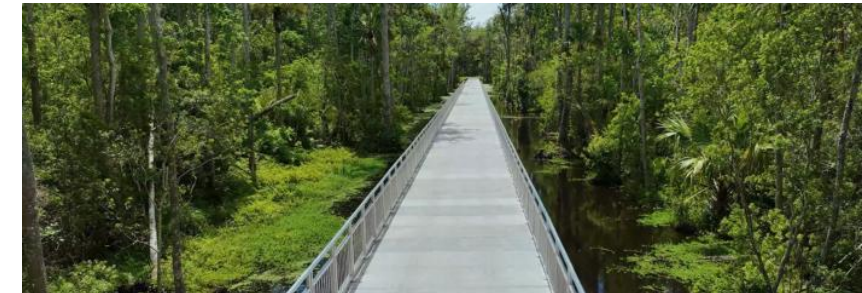
**N/S PAVED MULTI-USE TRAIL TO SR 100  
PEDESTRIAN BRIDGE**



**FLAGLER COUNTY GRAHAM  
SWAMP TRAIL**



**TYPICAL ASPHALT MULTI-USE TRAIL**



**FLAGLER COUNTY GRAHAM SWAMP TRAIL,  
ELEVATED BOARDWALK, CONCRETE**

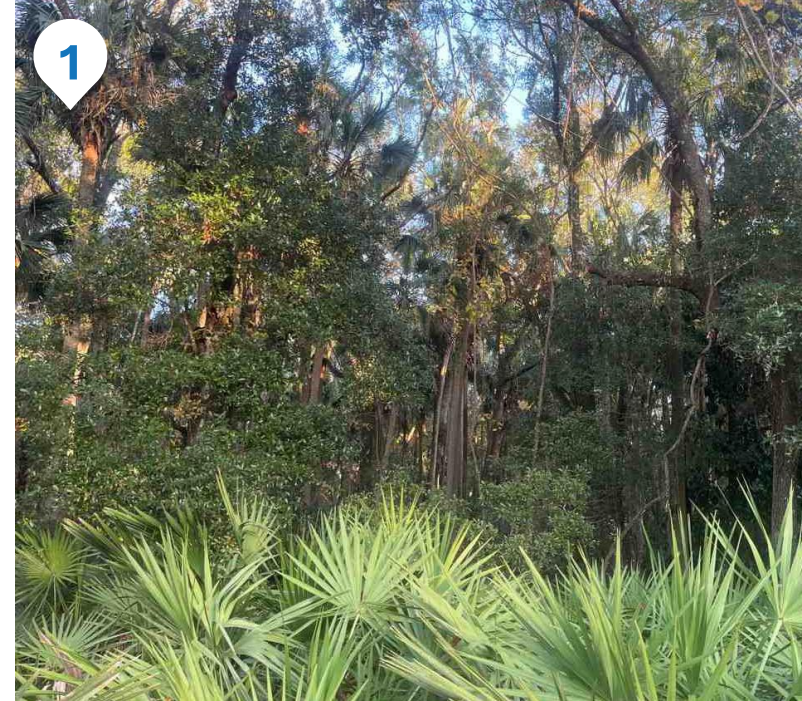
# Proposed Improvements

## N/S TRAIL



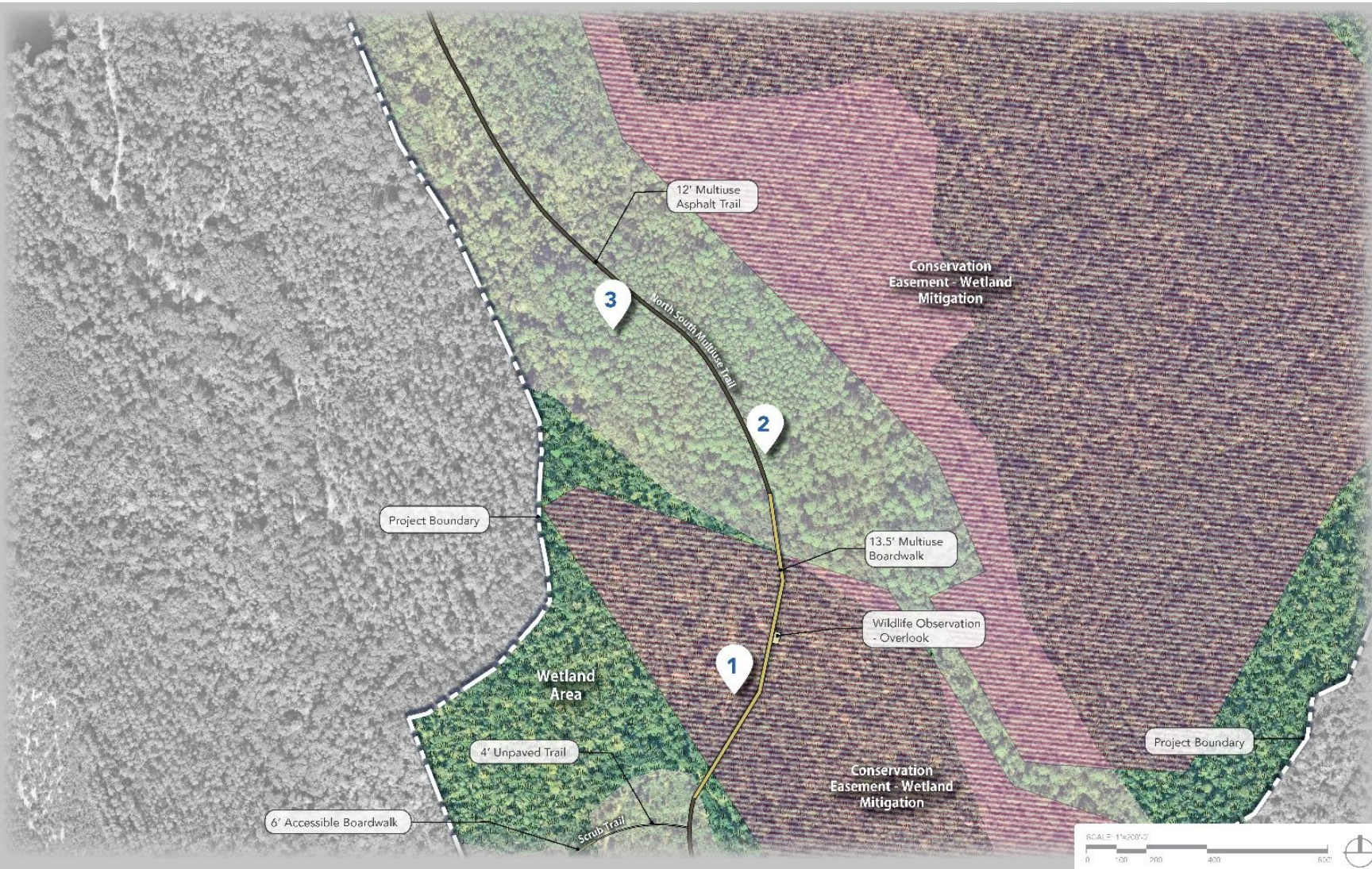
# Proposed Improvements

## N/S TRAIL



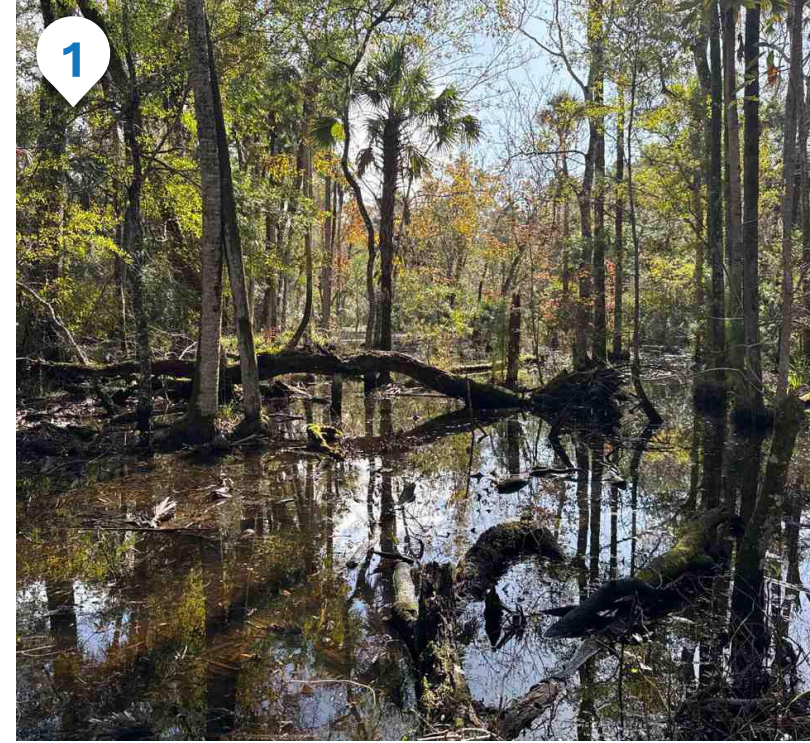
# Proposed Improvements

## N/S TRAIL



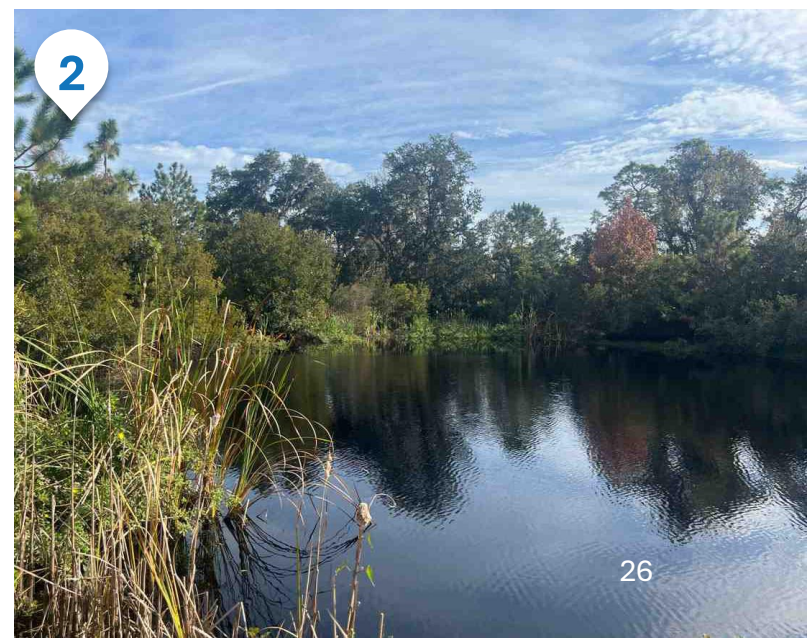
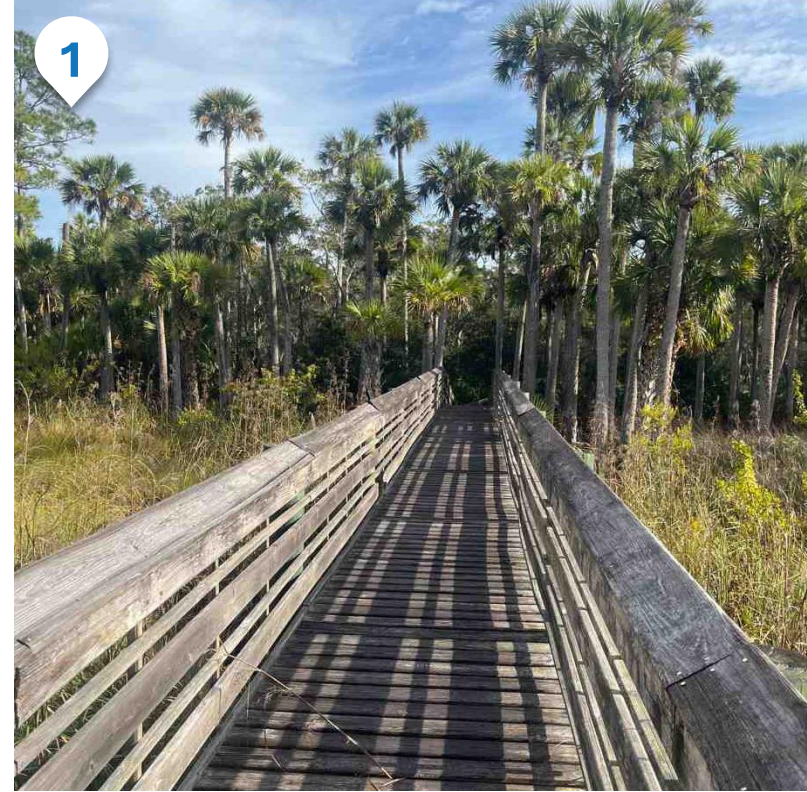
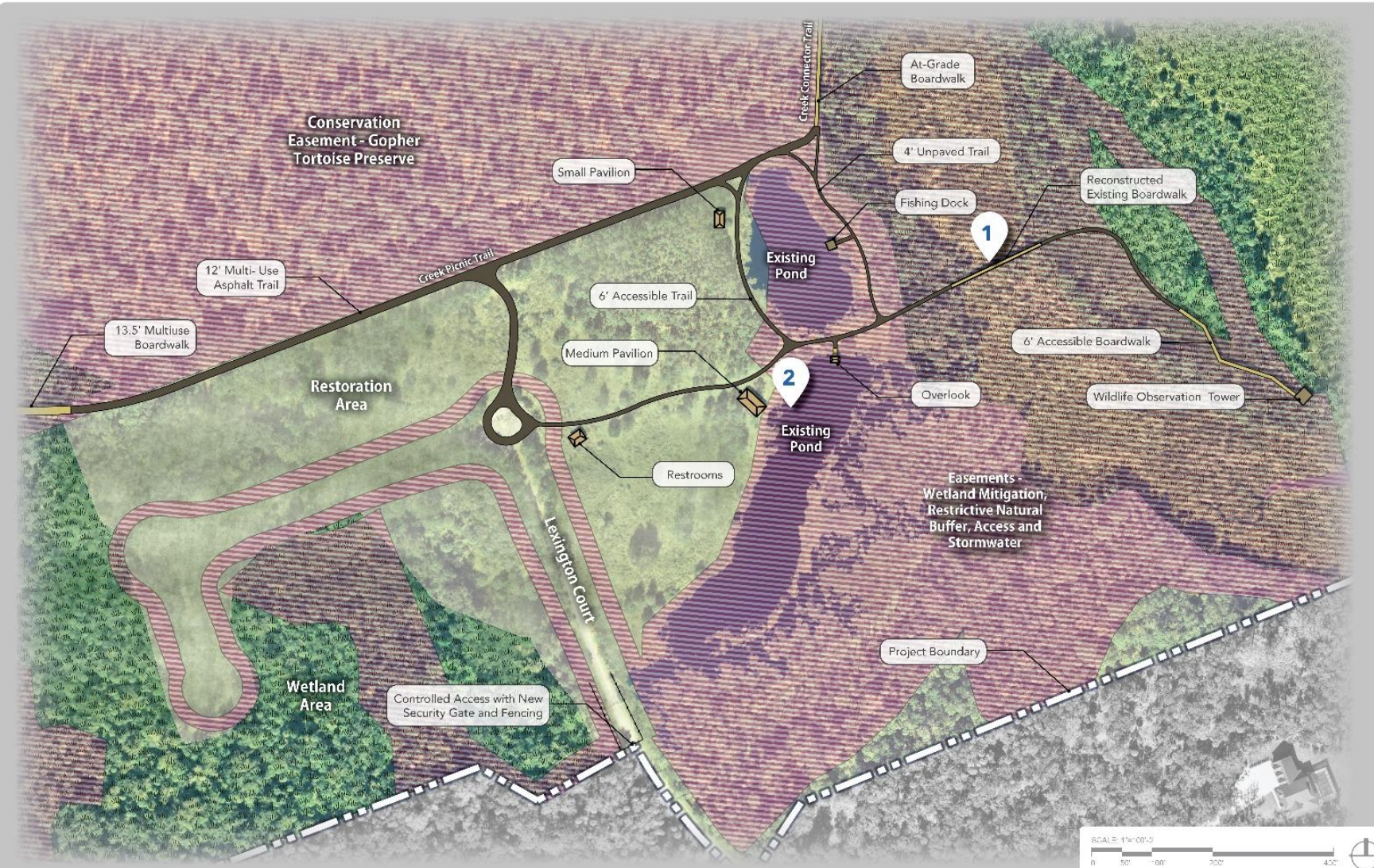
# Proposed Improvements

## N/S TRAIL



# Proposed Improvements

## WATERFRONT PICNIC AREA



# Proposed Improvements

## WATERFRONT PICNIC AREA



# Proposed Improvements – Trails



**FLAGLER COUNTY LEIGH TRAIL ELEVATED BOARDWALK, WOOD**



**AT-GRADE BOARDWALK**



**UNPAVED TRAILS**

# Proposed Improvements – Wildlife Observation & Habitat Restoration



**WILDLIFE OBSERVATION**

**REWILDING AREAS**

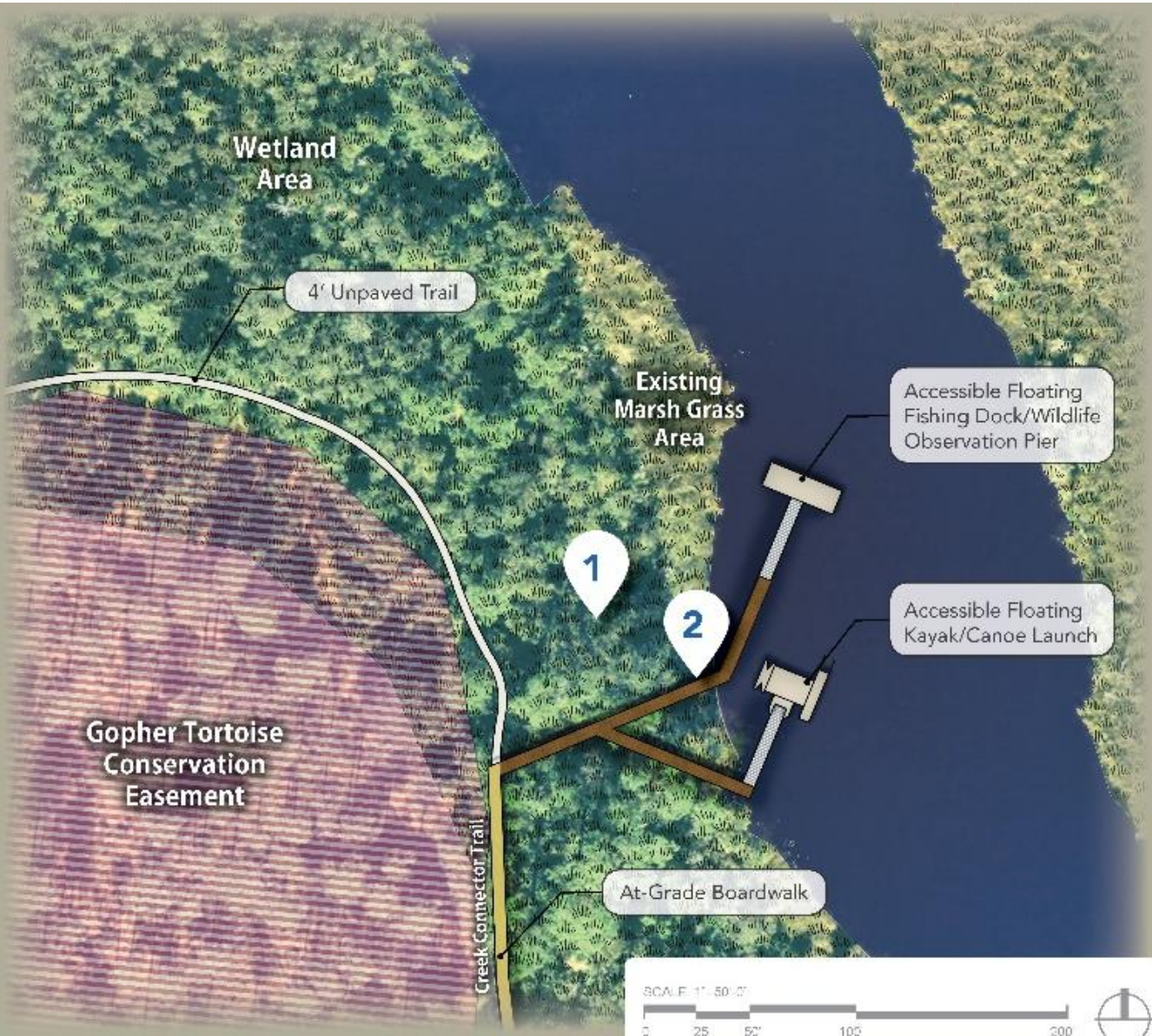
# Proposed Improvements – Environmental Education



## ENVIRONMENTAL EDUCATION STATIONS / ELEMENTS

# Proposed Improvements

## CREEK ACCESS



# Proposed Improvements – Water Access



**FISHING PIERS**

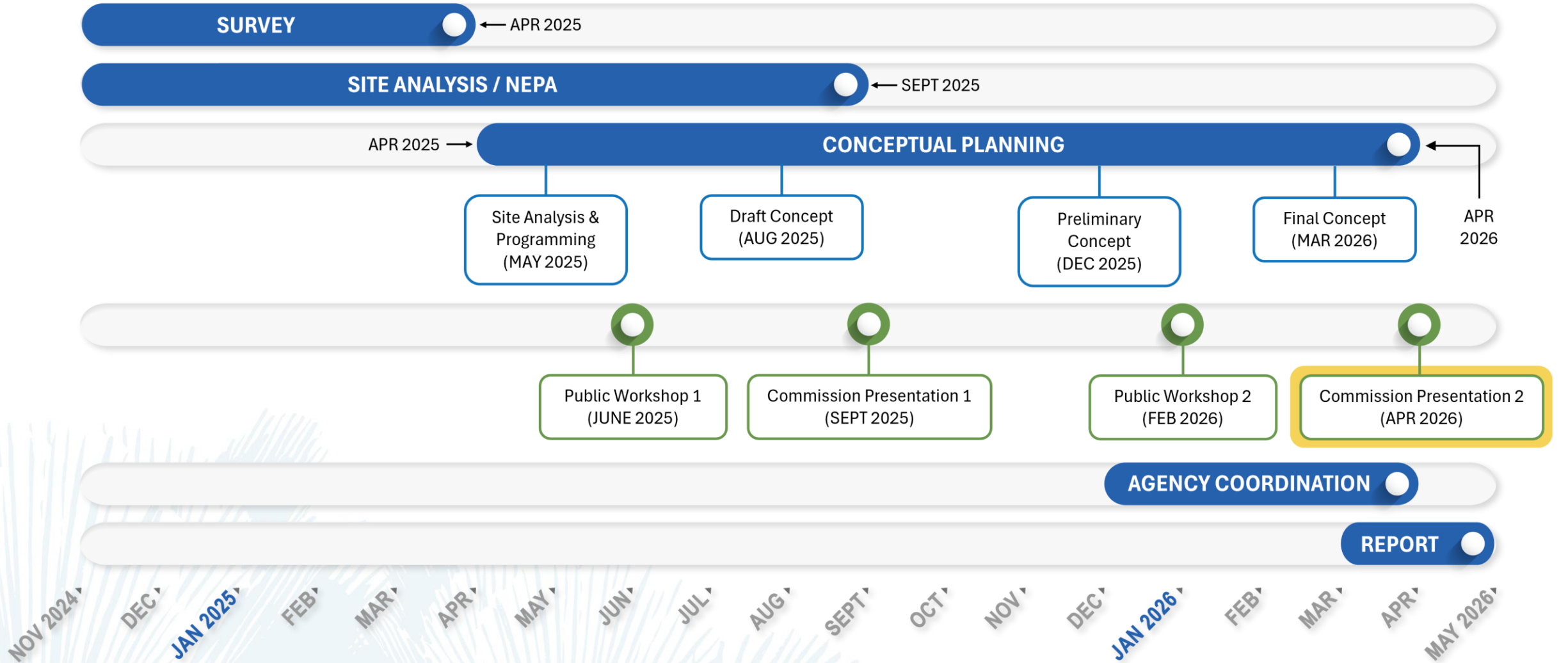


**ACCESSIBLE FLOATING KAYAK/CANOE LAUNCH**



**ACCESSIBLE FLOATING FISHING DOCK**

# NEXT STEPS



# BREAK OUT STATIONS



More Detailed  
Overview of  
Concepts



Answer  
Questions



Take  
Input

# THANK YOU

We appreciate your participation!  
Please email follow-up comments **by February 11** to:

**AMY STROGER**

Flagler County Project Manager  
[astroger@flaglercounty.gov](mailto:astroger@flaglercounty.gov)