



Commission on Homelessness to Housing

for Volusia and Flagler Counties

2023
POINT IN TIME
COUNT

Volusia Flagler County Coalition for the Homeless



Mission

The Commission on Homelessness and Housing's (COHH) mission is to develop and promote strategies to address the problem of homelessness and work collaboratively with all levels of government, nonprofit providers, and the community at large.

Vision

A housing crisis response system in Volusia and Flagler counties to make homelessness rare, brief, and one time.

What is Point-in-Time count?

The Point-in-Time (PIT) Count is a count of sheltered and unsheltered people experiencing homelessness on a single night.

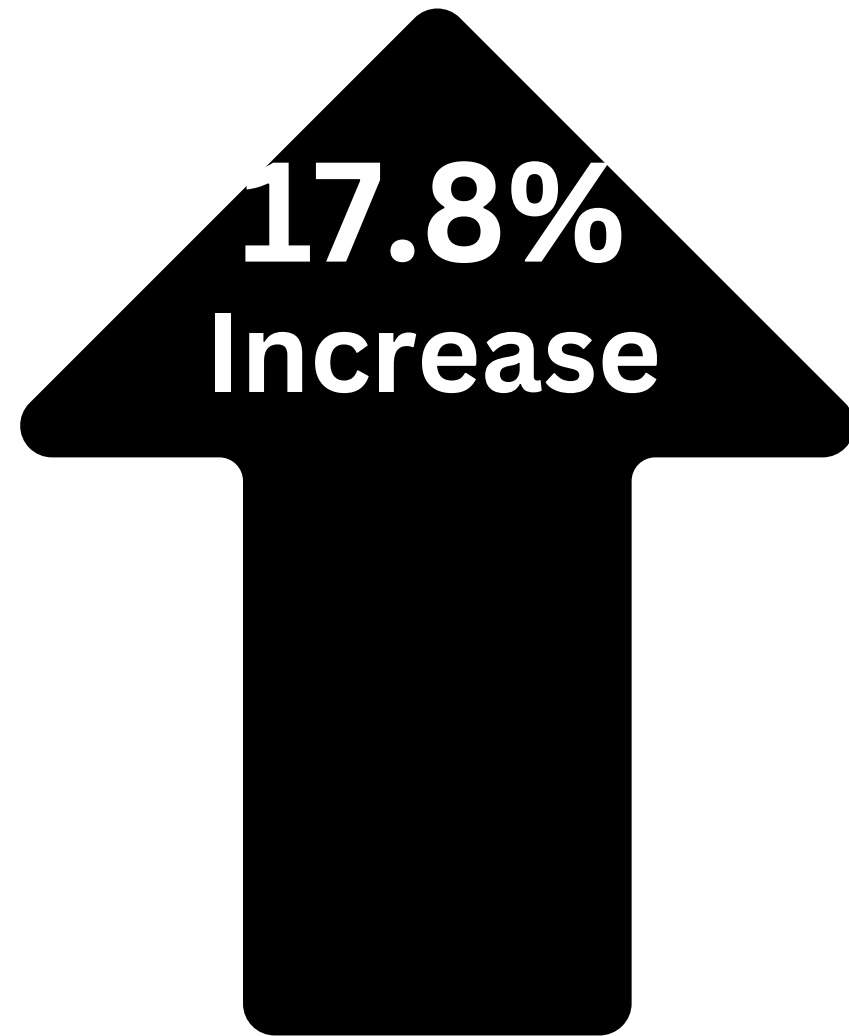


SHELTERED Counts:
Temporary housing settings such as, emergency shelter, transitional housing, and safe havens.

UNSHELTERED Counts:
Persons who reside in a place not meant for human habitation, such as cars, parks, sidewalks, abandoned buildings, on the street.

TOTAL COUNT

2023: **1053**



2022: **865**



“

1053



People were experiencing homelessness in Volusia/Flagler Counties on January 24, 2023

”

SHELTERED

470



UNSHELTERED

583



Included in the 1053 people:



312 Families with children



80 Veterans



Has Income

YES



37.4%

NO



48.4%

?

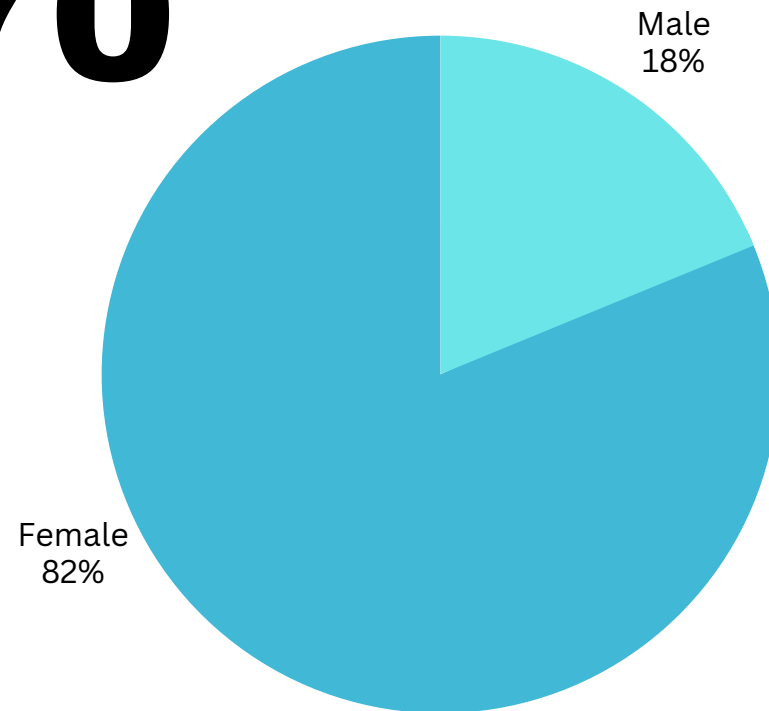


14.2%



SHELTERED Count

470

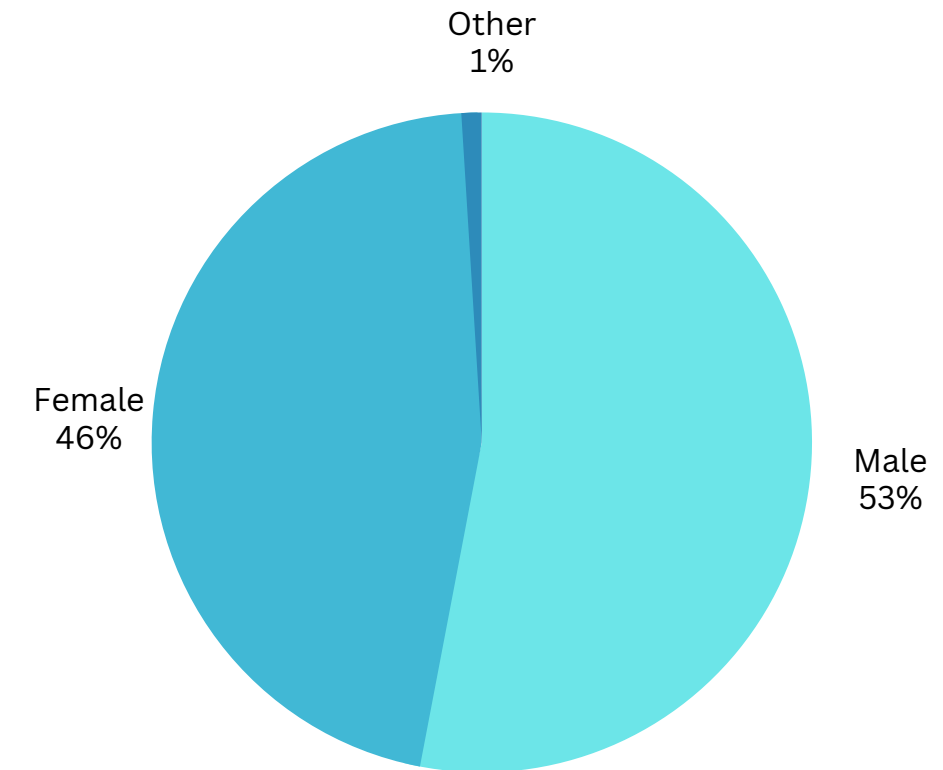


MENTAL HEALTH
25 People

SUBSTANCE USE DISORDER
10 People

UNSHELTERED Count

583



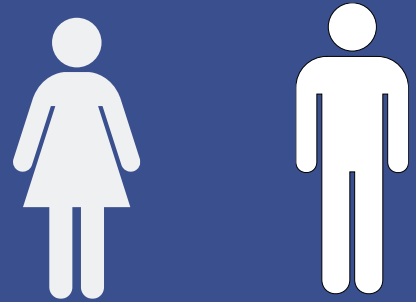
MENTAL HEALTH
117 People

SUBSTANCE USE DISORDER
80 People

VETERANS

80

Gender



16.3% 83.7%

Families



Three (3)

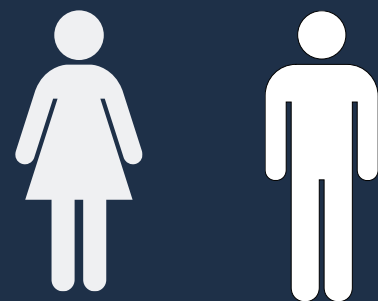
Chronic Homeless

26%

CHRONIC COUNT

137

Gender



27% 73%



65%

Substance Use Disorder

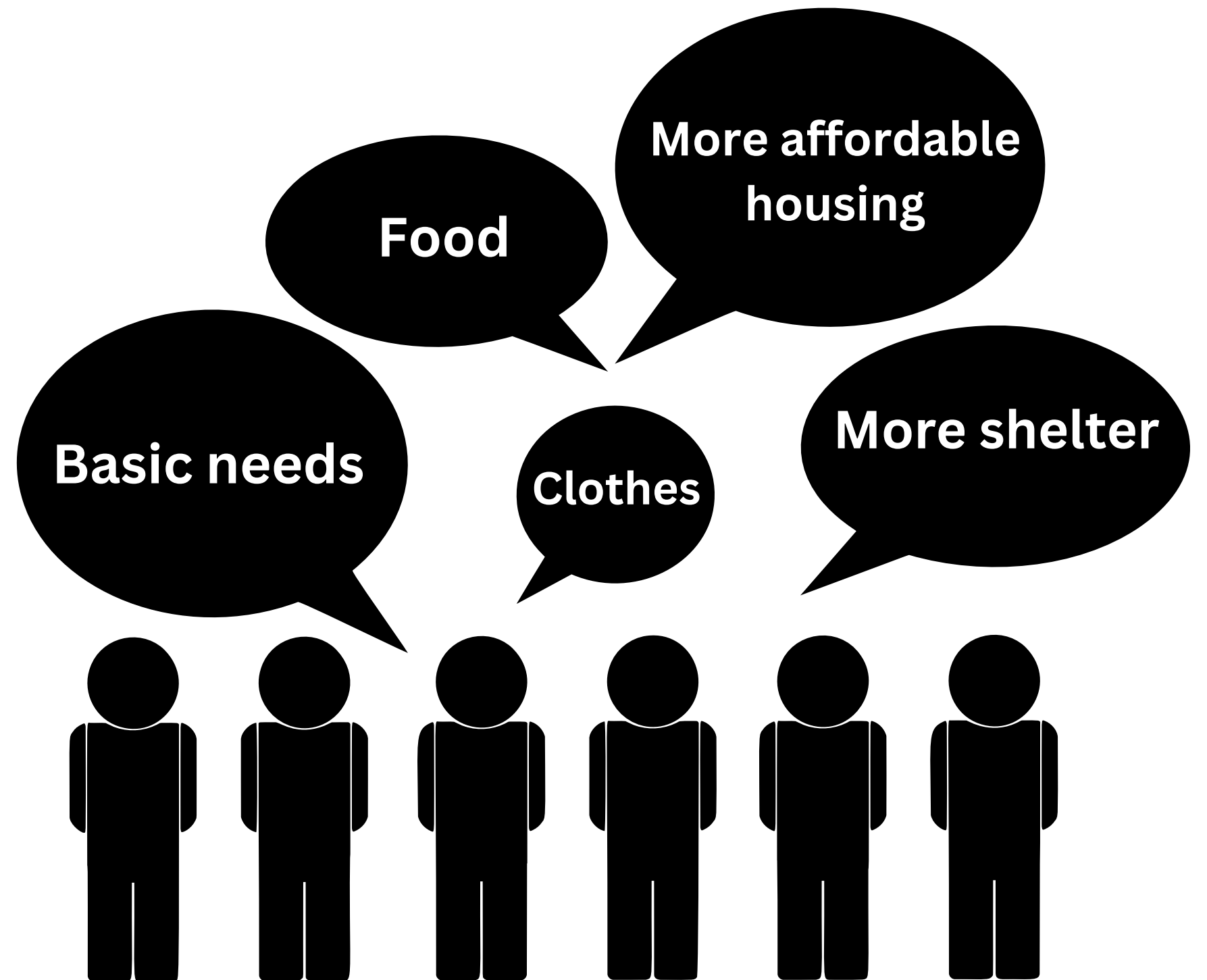
58%



Housing Inventory Count (HIC)

- Total Organizations: **16**
- Total Beds: **1114**
- Utilization Rate: **83%**

Feedback

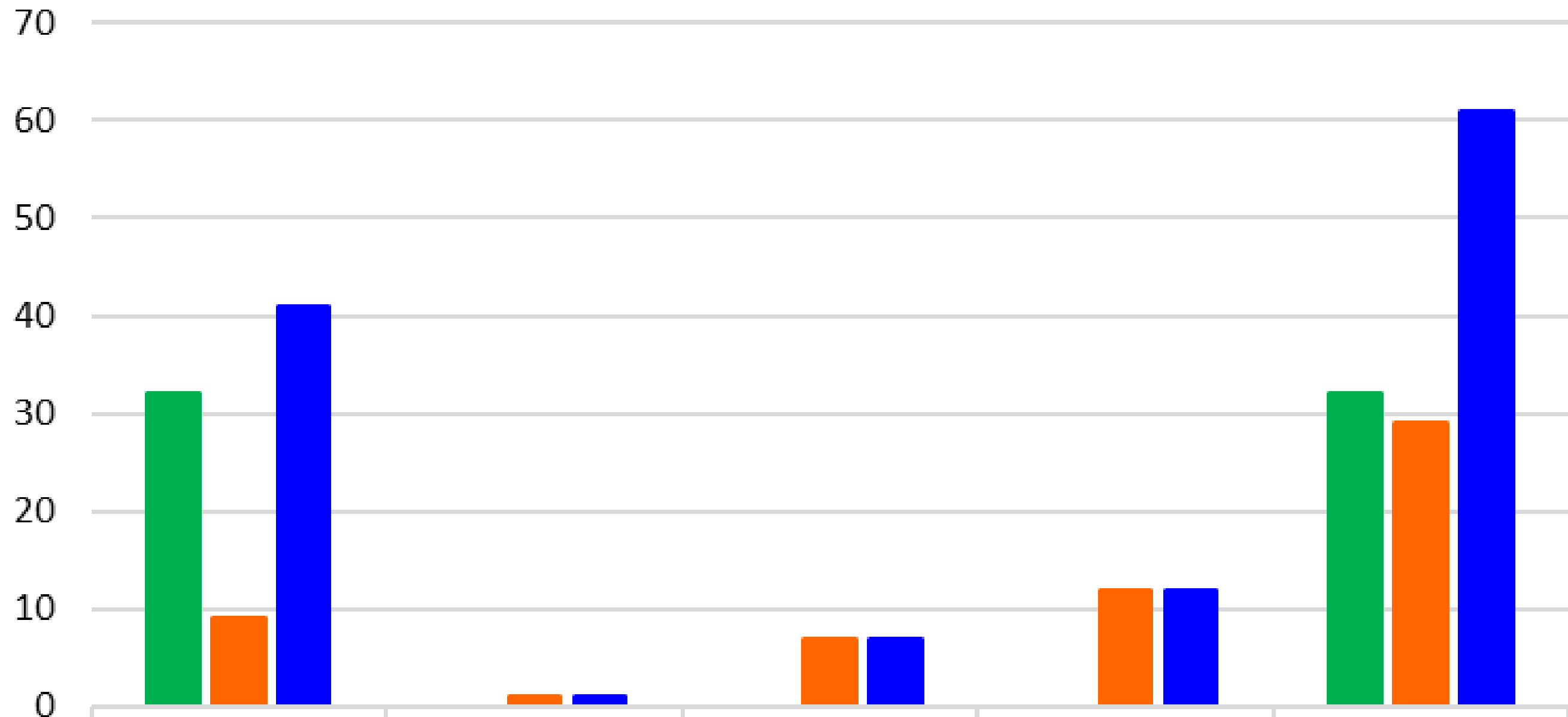


Volusia County by City Breakdown



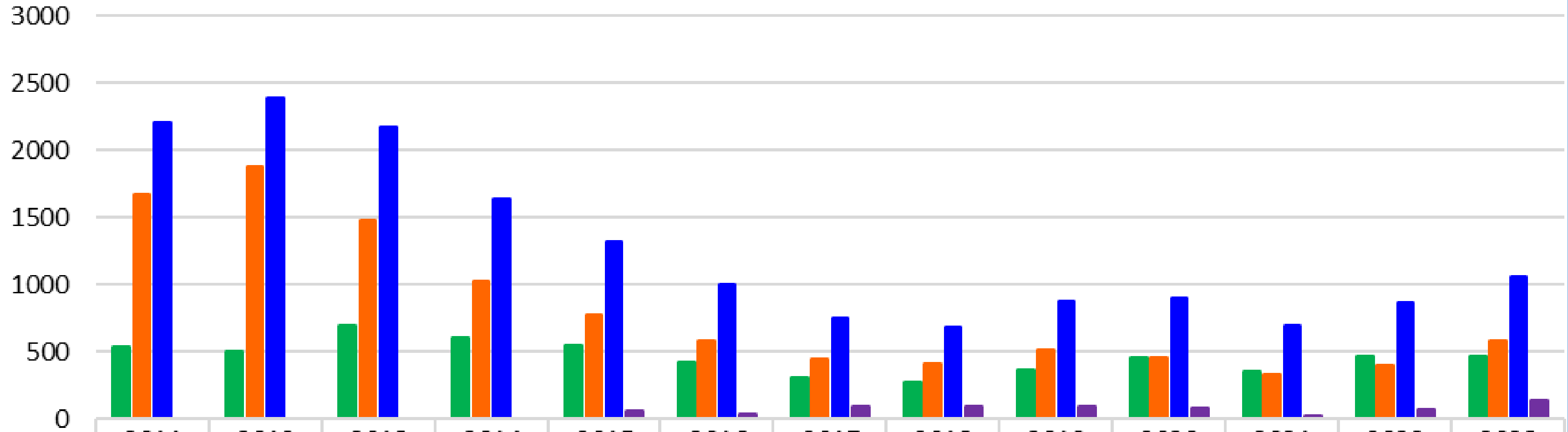
	Daytona Beach	DeBary	DeLand	DeLeon Springs	Deltona	Holly Hill	NSB	Orange City	Ormond	Port Orange	South Daytona	Not specified	Total
Sheltered	300	0	105	0	0	33	0	0	0	0	0	0	438
Unsheltered	126	4	42	1	23	15	70	29	52	79	4	109	554
Total	426	4	147	1	23	48	70	29	52	79	4	109	992

Flagler County by City Breakdown



	Bunnell	Flagler Beach	Palm Coast	Unspecified	Total
Sheltered	32	0	0	0	32
Unsheltered	9	1	7	12	29
Total	41	1	7	12	61

Point in Time Count Trends



	2011	2012	2013	2014	2015	2016	2017	2018	2019	2020	2021	2022	2023
Sheltered	535	503	693	608	550	424	305	277	368	451	359	463	470
Unsheltered	1675	1881	1483	1025	775	581	448	406	507	453	335	402	583
Total	2210	2384	2176	1633	1325	1005	753	683	875	904	694	865	1053
CH Persons	0	0	0	0	55	30	88	90	89	76	24	73	137

Key Implications

- Families
- Income
- Unsheltered

