



# Flagler County Board of County Commissioners Workshop Agenda

**Monday, September 27, 2021 • 1:00 p.m.**

**Government Services Complex, 1769 E. Moody Blvd., Bldg 2, Board Chambers, Bunnell, FL 32110**

- 1. Call to Order**
- 2. Pledge to the Flag and Moment of Silence**
- 3. Welcome:** Flagler County Board Chair
- 4. Redistricting Discussion** – To examine the parameters for redrawing the boundaries of existing county districts to keep them as nearly equal in population as possible, based on the 2020 Census, as required by the Florida Constitution and Florida Statutes, Chapter 124. A joint meeting with the School Board will be held at a later date where the respective Boards will jointly select new district maps of the county.

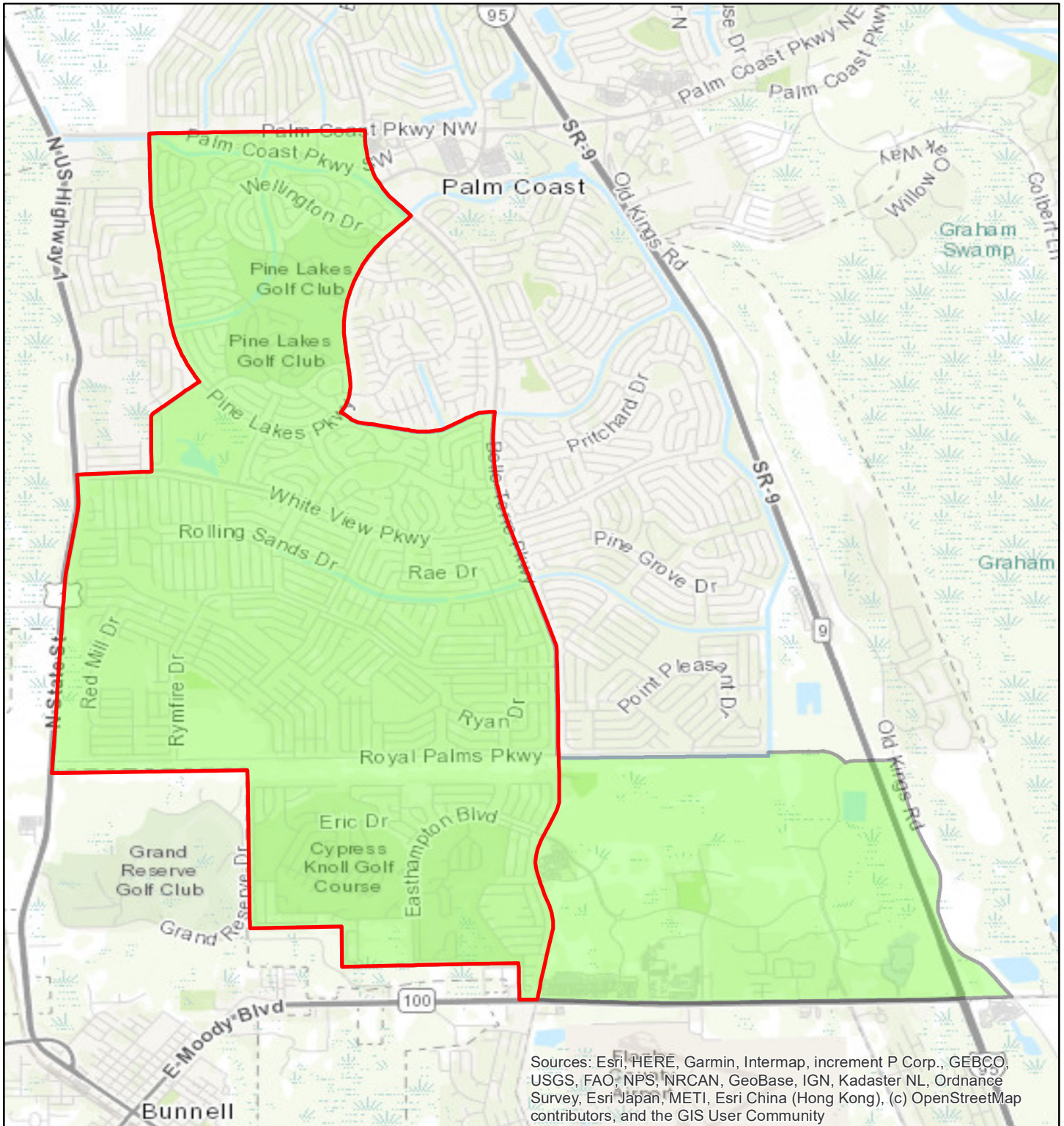
*Note: “Redistricting” of County Commissioners’ and School Board members’ political districts is not the same as “rezoning” of school attendance zones, which is an entirely separate process within the sole purview of the School Board.*

- 5. Public Comment**
- 6. Adjournment**


While this is a workshop only and no decisions are expected to be made by any of the governmental bodies, if a person decides to appeal any matter that may be discussed for a future proceeding, a record of the workshop may be needed and, for such purposes, the person may need to ensure that a verbatim record of the workshop is made.

In accordance with the Americans with Disabilities Act, persons needing assistance to participate in this meeting should contact the (386) 313-4001 at least 48 hours prior to the meeting.

# District 1 Redistricting Comparison



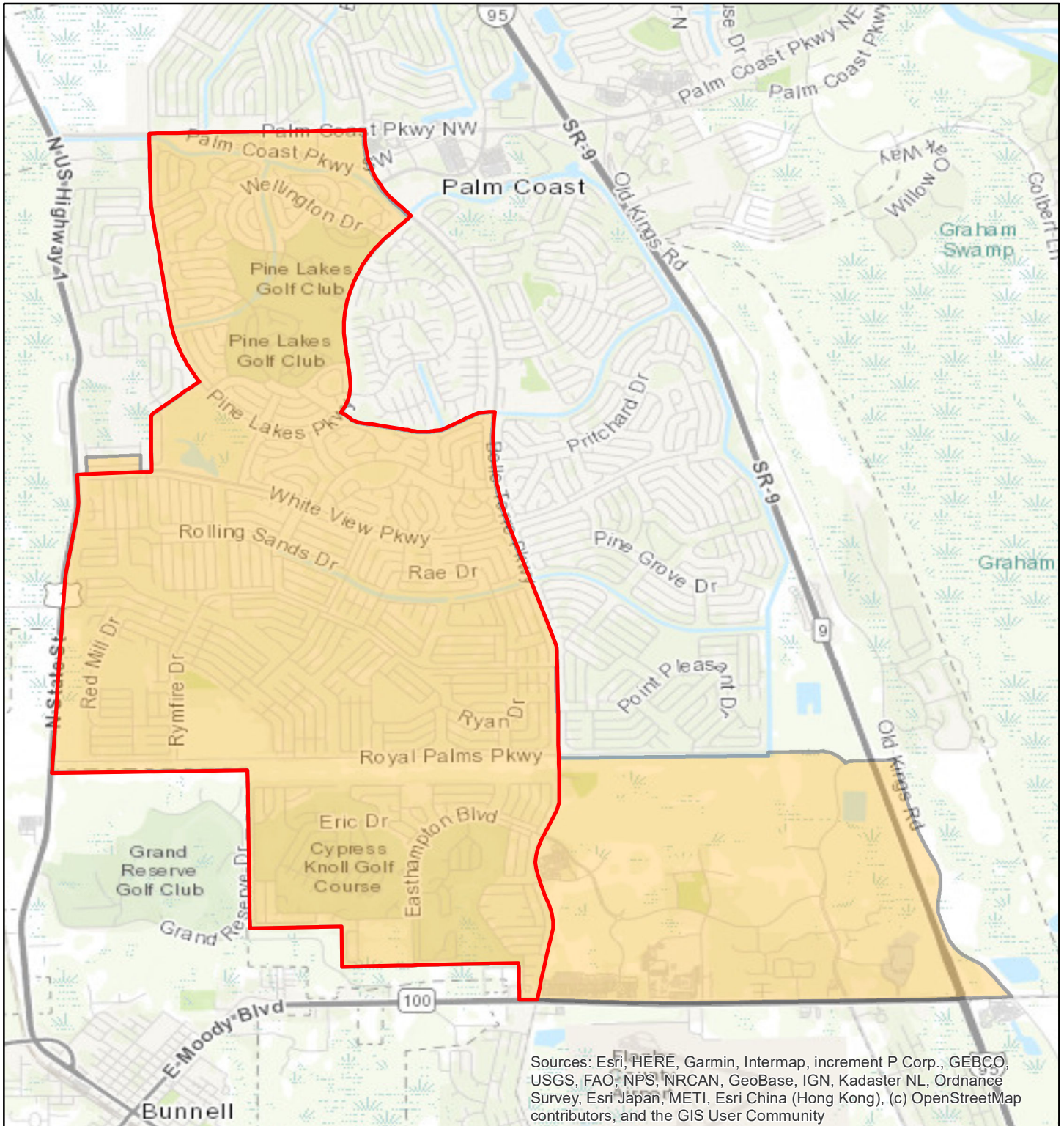
Flagler County Population: 115,378  
 District Even Value: 23,075.6

 Current Districting

 Option A

District Plan	Population	# Deviation From Even Value	% Deviation From Even Value
Current	21837	-1239	-5.369
Option A	22919	-157	-0.680

# District 1 Redistricting Comparison



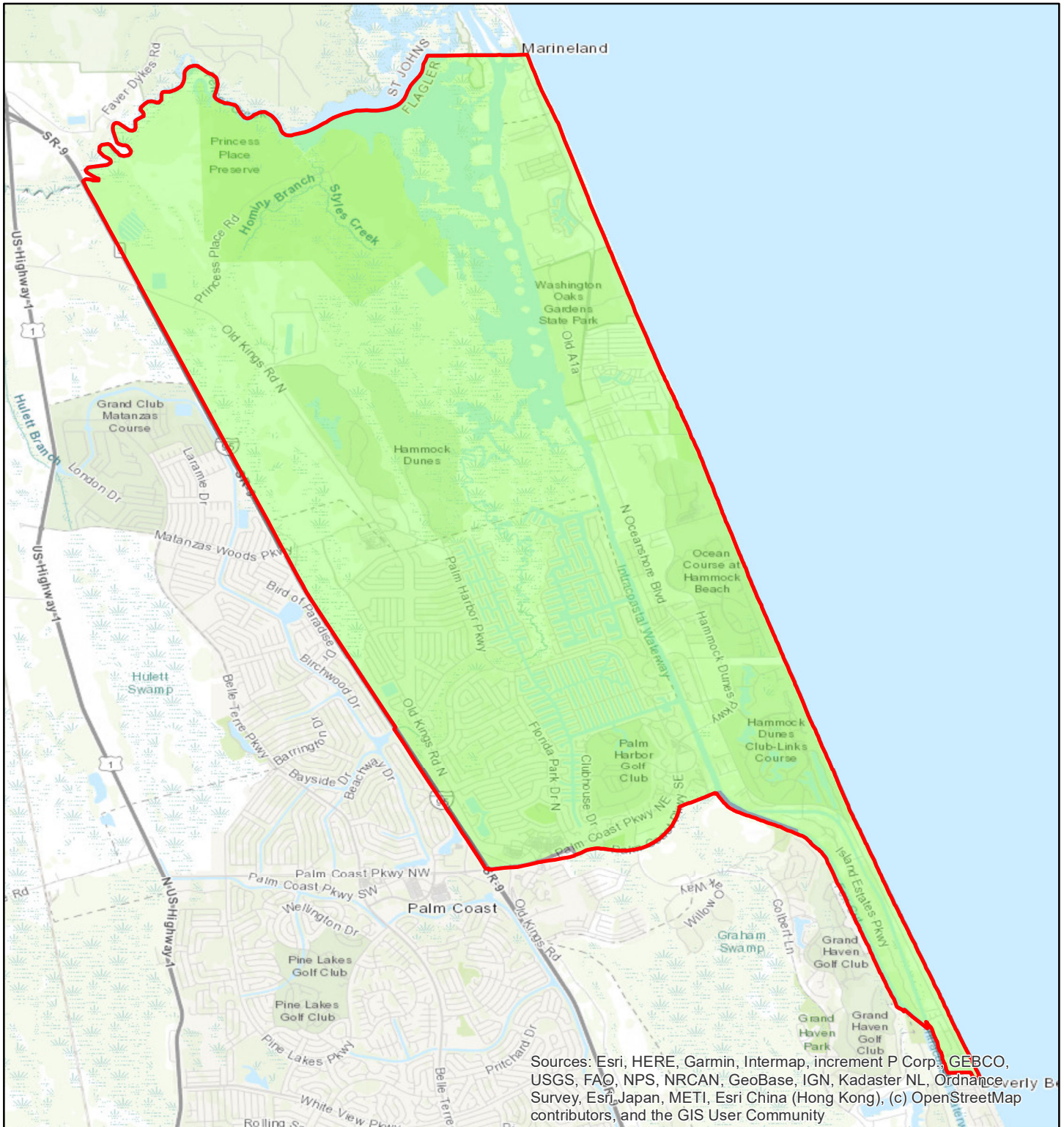
Sources: Esri, HERE, Garmin, Intermap, increment P Corp., GEBCO, USGS, FAO, NPS, NRCAN, GeoBase, IGN, Kadaster NL, Ordnance Survey, Esri Japan, METI, Esri China (Hong Kong), (c) OpenStreetMap contributors, and the GIS User Community

Flagler County Population: 115,378  
 District Even Value: 23,075.6

- Current Districting
- Option B

District Plan	Population	# Deviation From Even Value	% Deviation From Even Value
Current	21837	-1239	-5.369
Option B	23069	-7	-0.030

# District 2 Redistricting Comparison

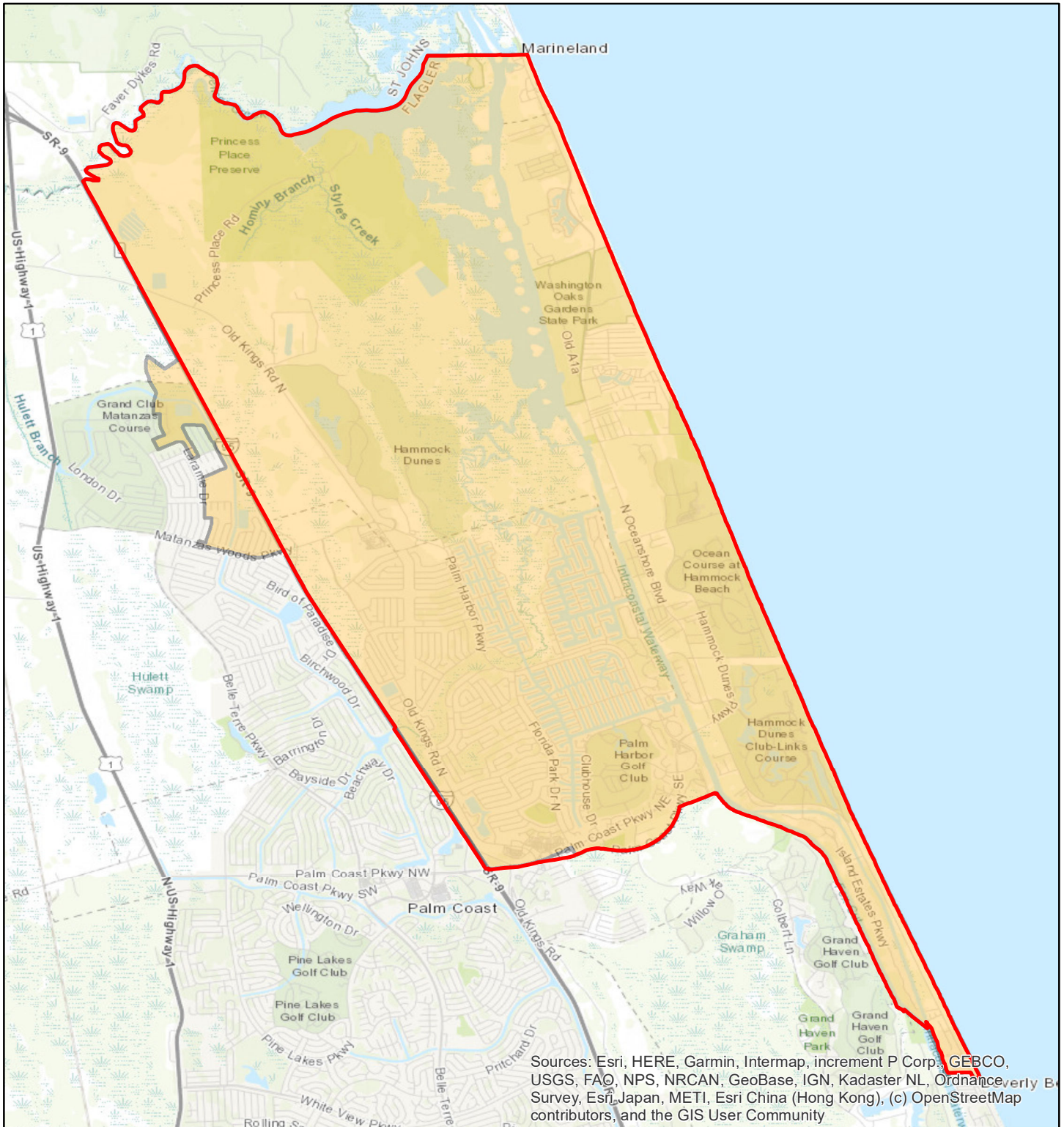


Flagler County Population: 115,378  
 District Even Value: 23,075.6

- Current Districting
- Option A

District Plan	Population	# Deviation From Even Value	% Deviation From Even Value
Current	22125	-951	-4.121
Option A	22125	-951	-4.121

# District 2 Redistricting Comparison



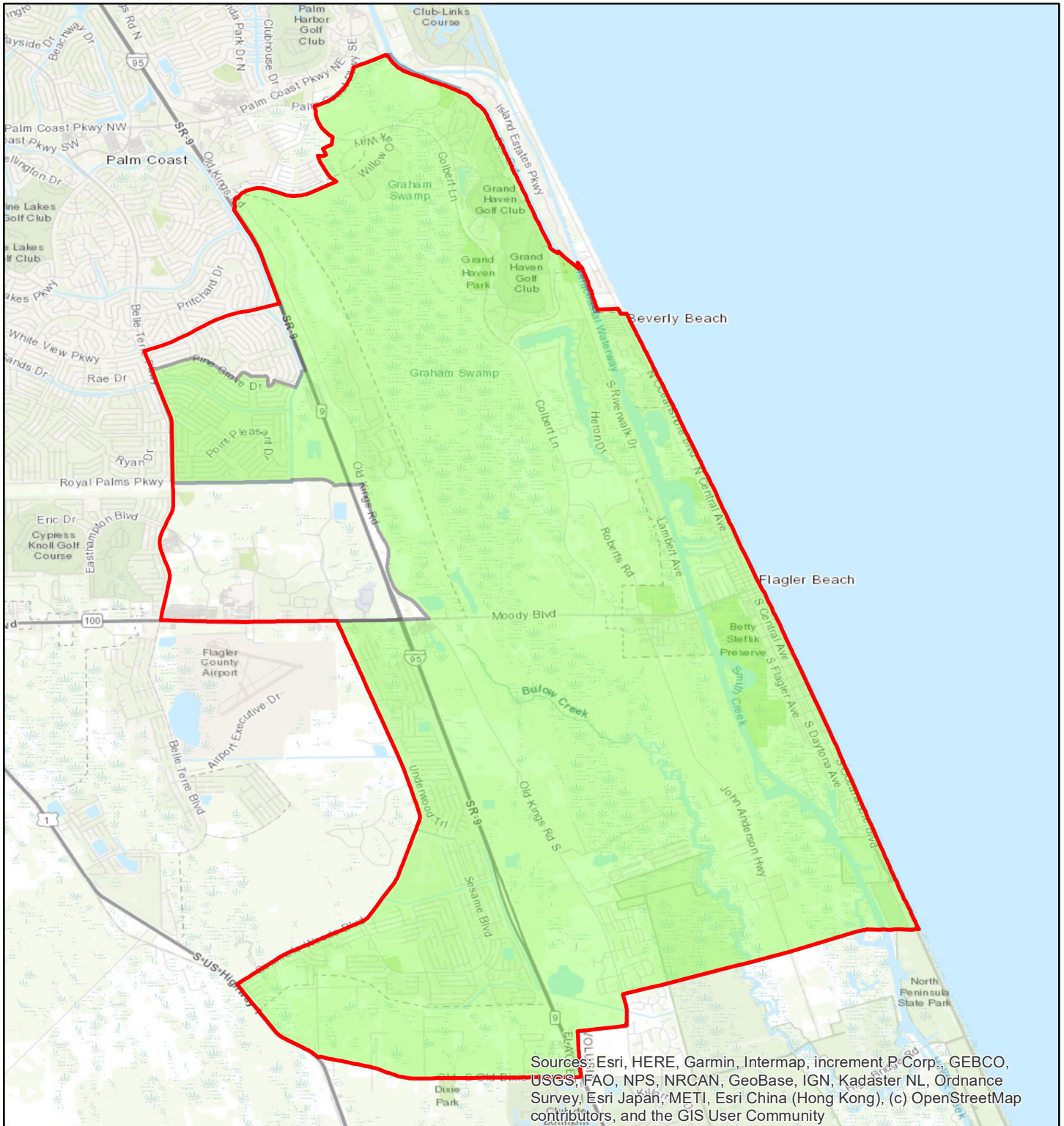
Sources: Esri, HERE, Garmin, Intermap, increment P Corp., GEBCO, USGS, FAO, NPS, NRCAN, GeoBase, IGN, Kadaster NL, Ordnance Survey, Esri Japan, METI, Esri China (Hong Kong), (c) OpenStreetMap contributors, and the GIS User Community

Flagler County Population: 115,378  
District Even Value: 23,075.6

- Current Districting
- Option B

District Plan	Population	# Deviation From Even Value	% Deviation From Even Value
Current	22125	-951	-4.121
Option B	23073	-3	-0.013

# District 3 Redistricting Comparison

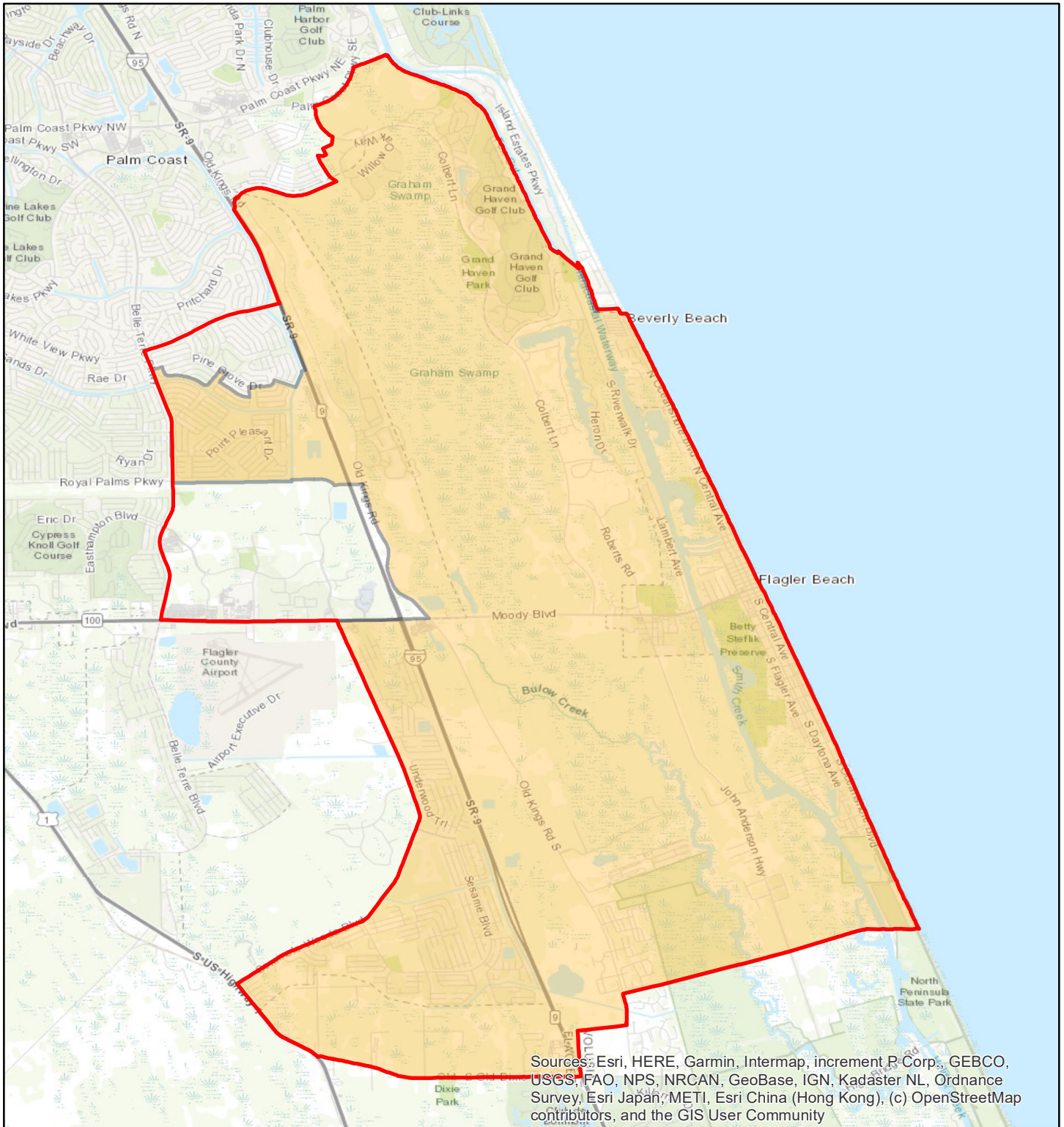


Flagler County Population: 115,378  
 District Even Value: 23,075.6

- Current Districting
- Option A

District Plan	Population	# Deviation From Even Value	% Deviation From Even Value
Current	26053	2977	12.901
Option A	22140	-936	-4.056

# District 3 Redistricting Comparison

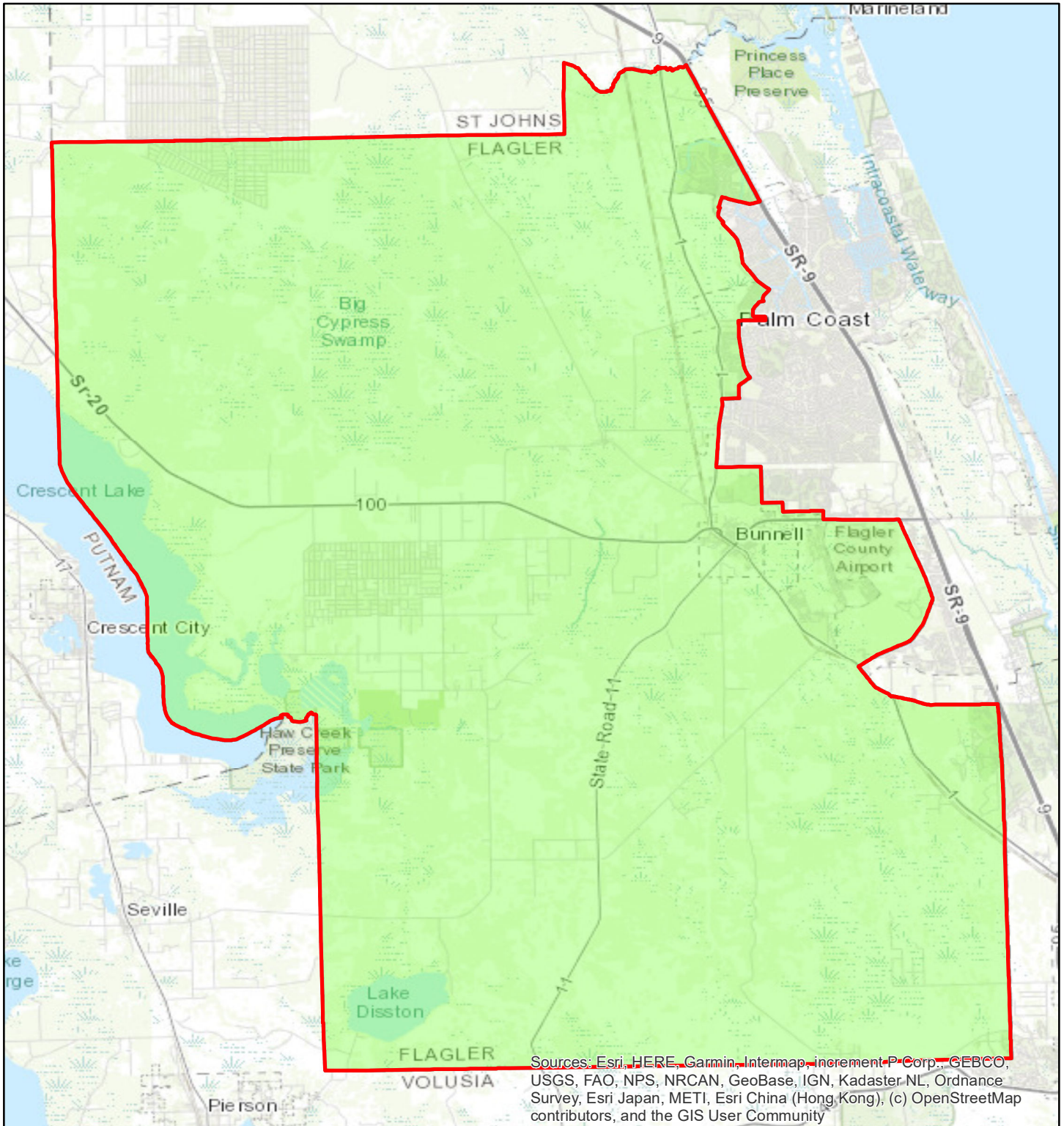


Flagler County Population: 115,378  
 District Even Value: 23,075.6

- Current Districting
- Option B

District Plan	Population	# Deviation From Even Value	% Deviation From Even Value
Current	26053	2977	12.901
Option B	23072	-4	-0.017

# District 4 Redistricting Comparison



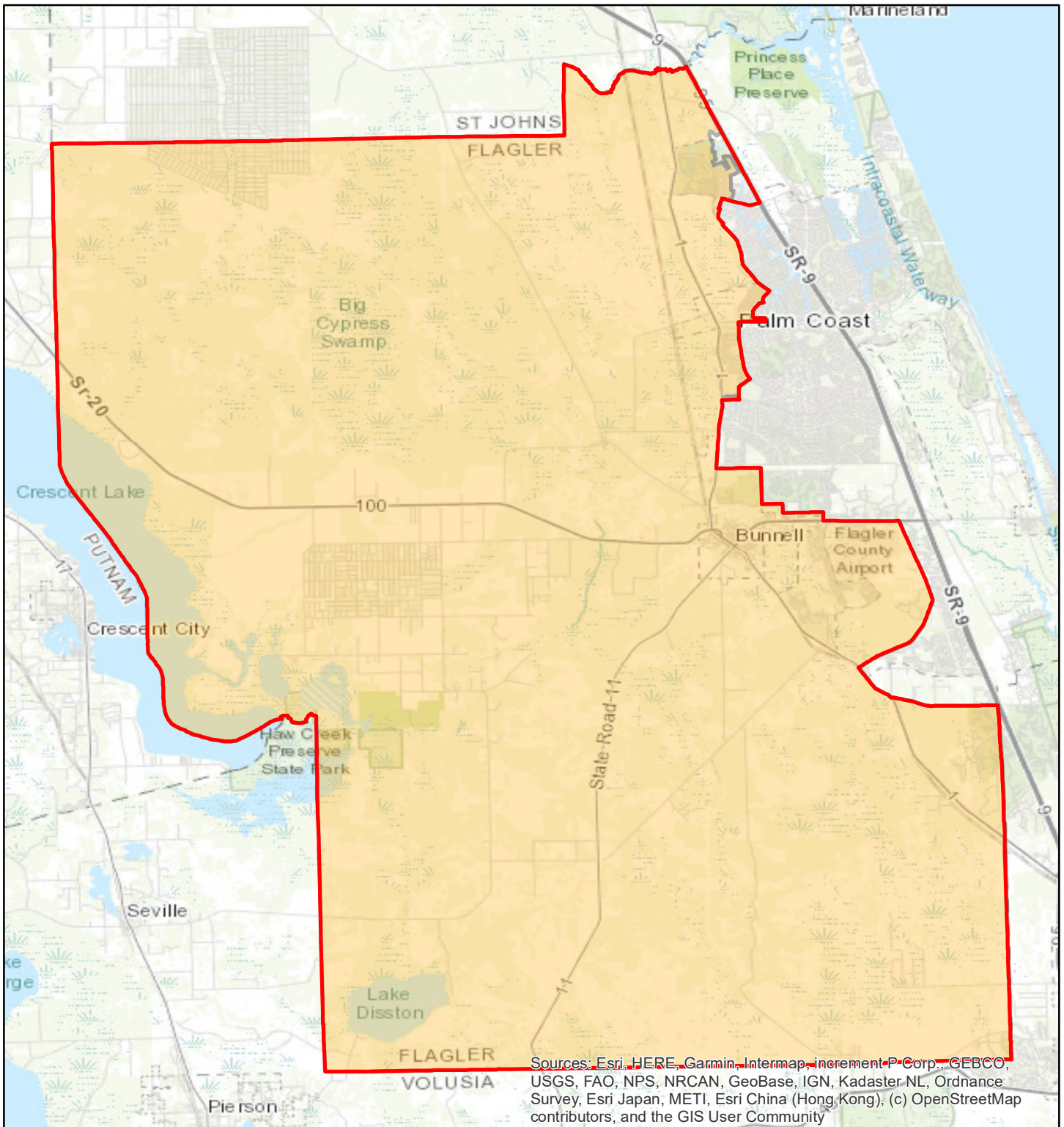
Flagler County Population: 115,378  
 District Even Value: 23,075.6

- Current Districting
- Option A

District Plan	Population	# Deviation From Even Value	% Deviation From Even Value
Current	24025	949	4.112
Option A	24025	949	4.112



# District 4 Redistricting Comparison

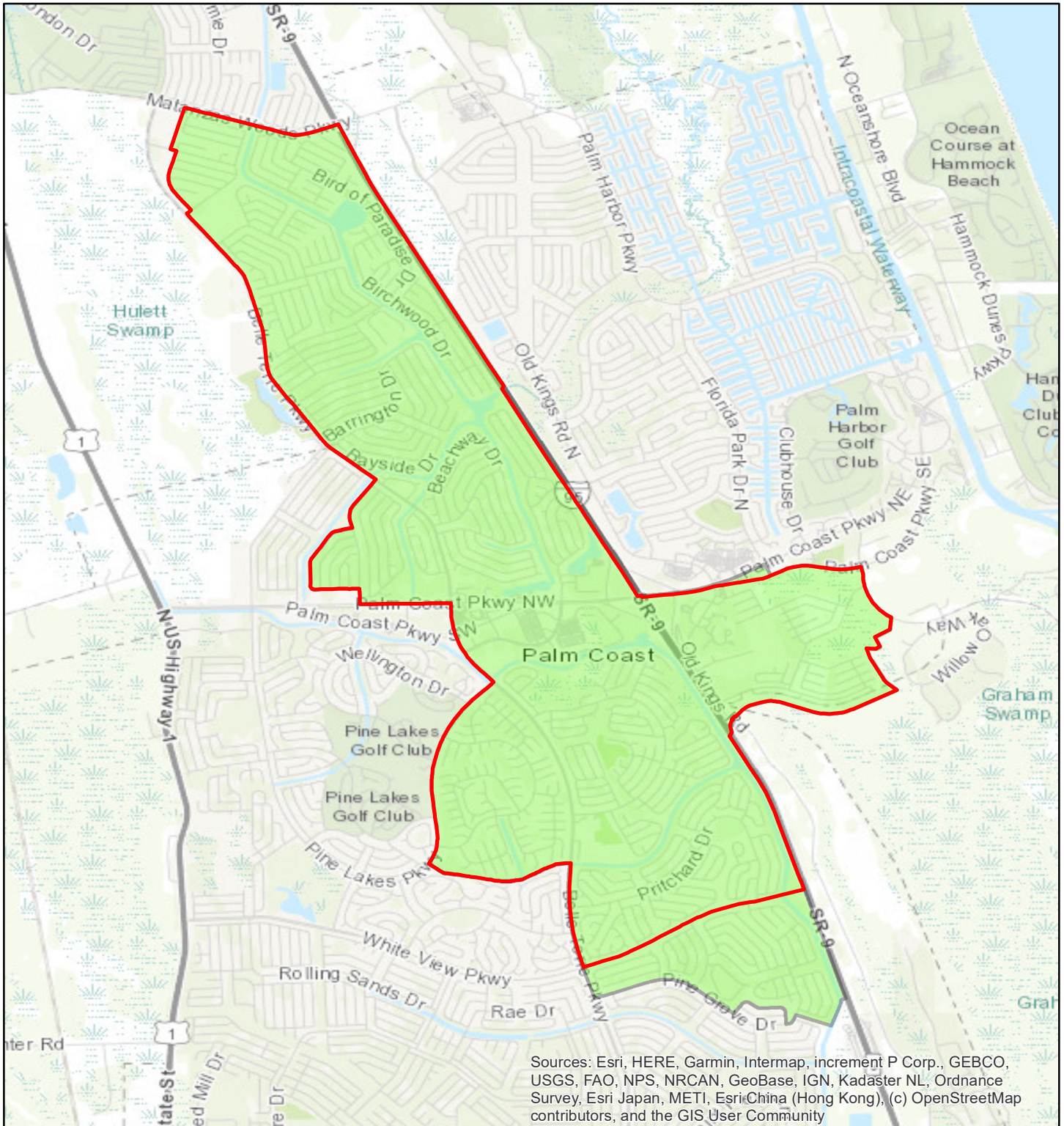


Flagler County Population: 115,378  
 District Even Value: 23,075.6

- Current Districting
- Option B

District Plan	Population	# Deviation From Even Value	% Deviation From Even Value
Current	24025	949	4.112
Option B	23078	2	0.009

# District 5 Redistricting Comparison

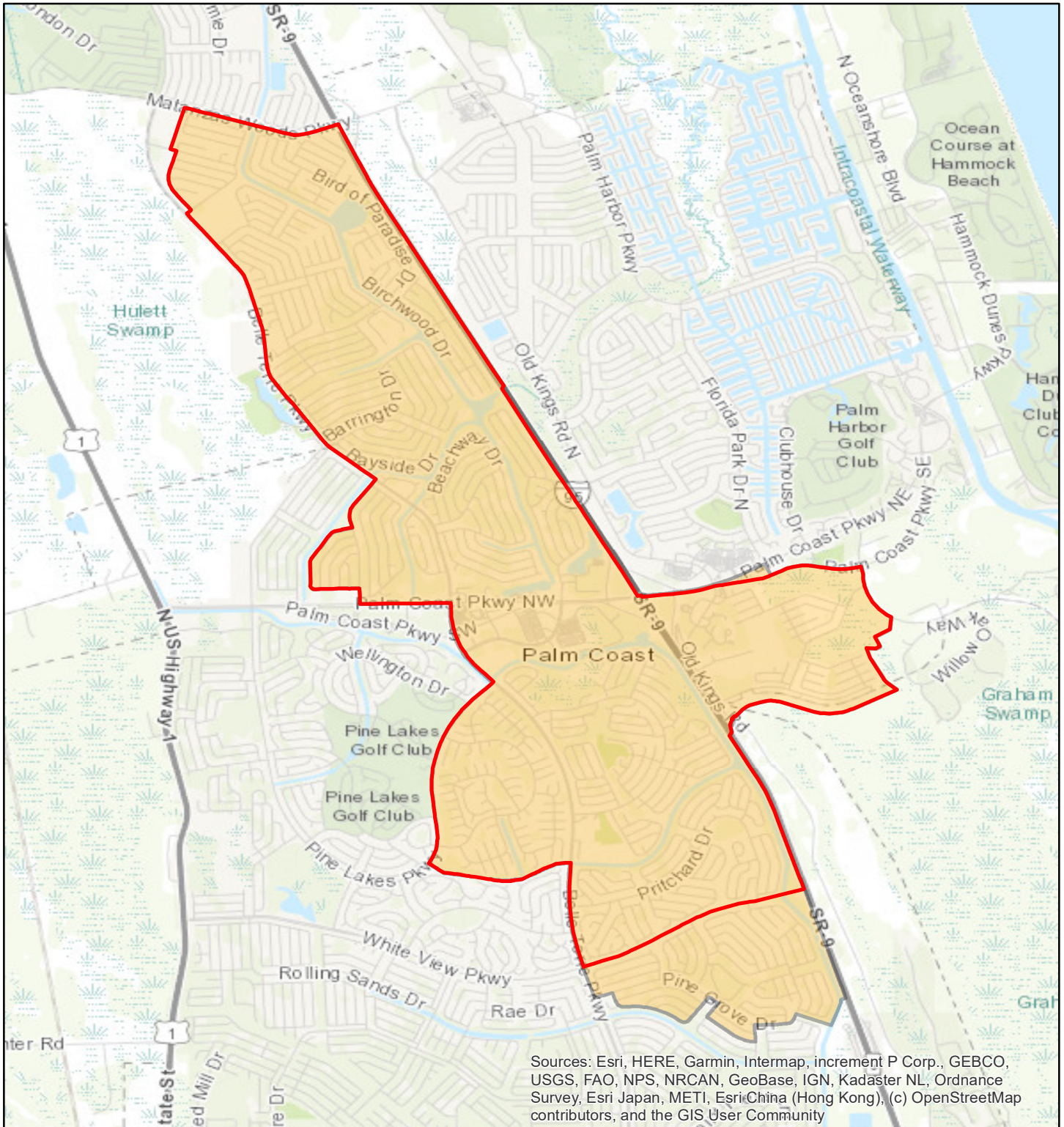


Flagler County Population: 115,378  
 District Even Value: 23,075.6

- Current Districting
- Option A

District Plan	Population	# Deviation From Even Value	% Deviation From Even Value
Current	21338	-1738	-7.532
Option A	24169	1093	4.737

# District 5 Redistricting Comparison



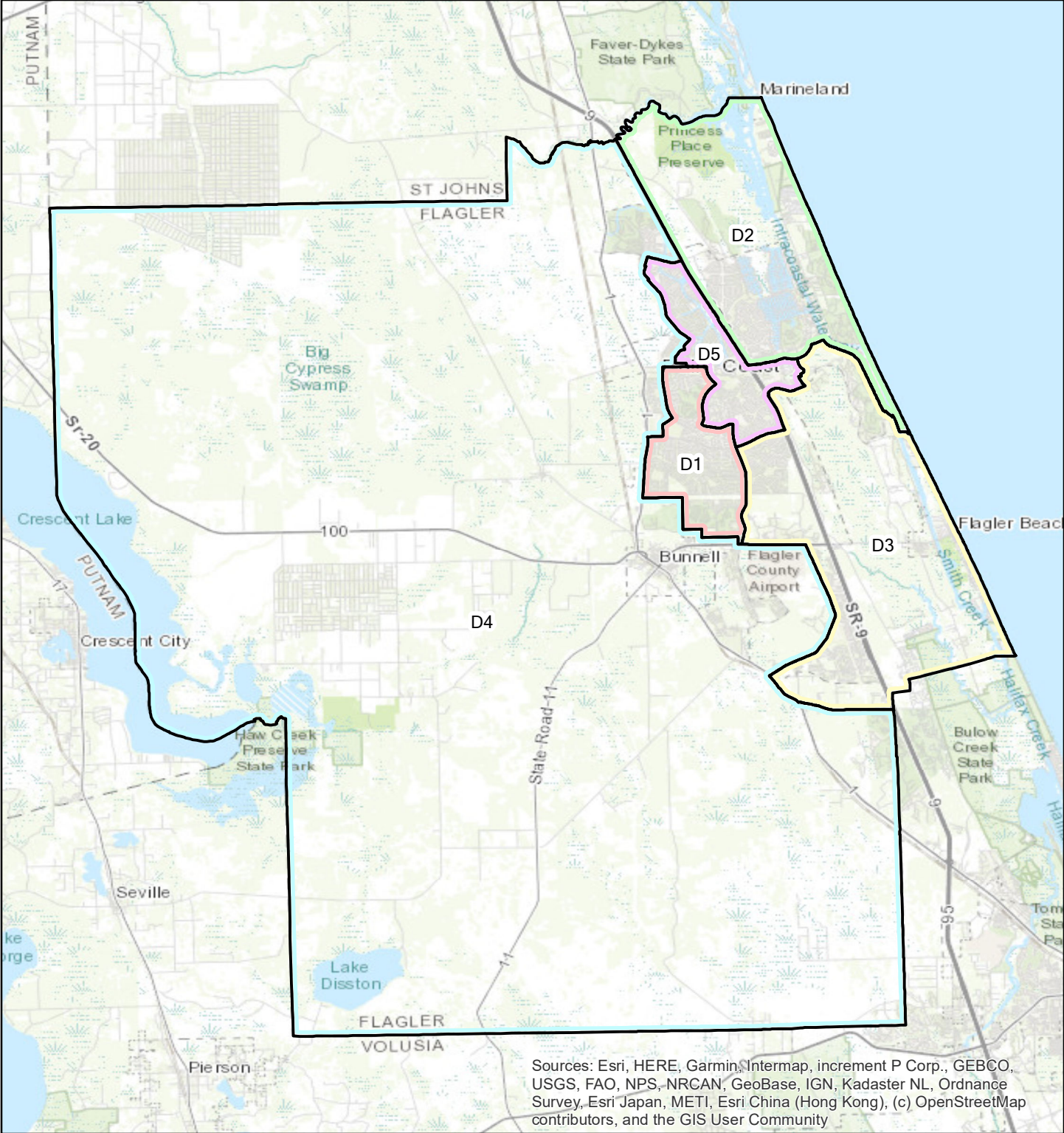
Flagler County Population: 115,378  
 District Even Value: 23,075.6

- Current Districting
- Option B

District Plan	Population	# Deviation From Even Value	% Deviation From Even Value
Current	21338	-1738	-7.532
Option B	23086	10	0.043

# Current Districts

Flagler County Population: 115,378  
 District Even Value: 23,075.6

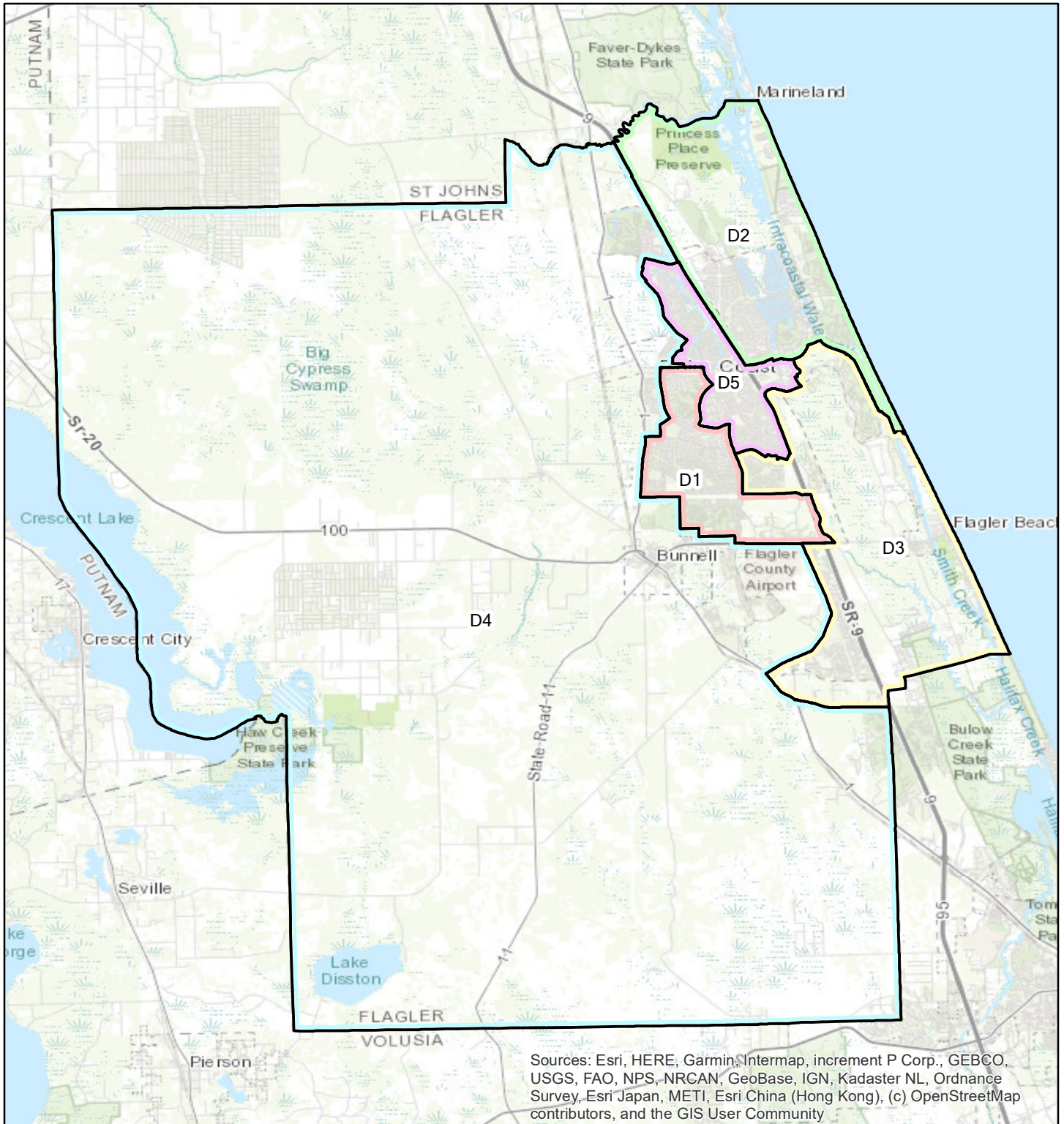


Sources: Esri, HERE, Garmin, Intermap, increment P Corp., GEBCO, USGS, FAO, NPS, NRCAN, GeoBase, IGN, Kadaster NL, Ordnance Survey, Esri Japan, METI, Esri China (Hong Kong), (c) OpenStreetMap contributors, and the GIS User Community

District Plan	Population	# Deviation From Even Value	% Deviation From Even Value
D1	21837	-1239	-5.369
D2	22125	-951	-4.121
D3	26053	2977	12.901
D4	24025	949	4.112
D5	21338	-1738	-7.532

# Proposed Districts (A)

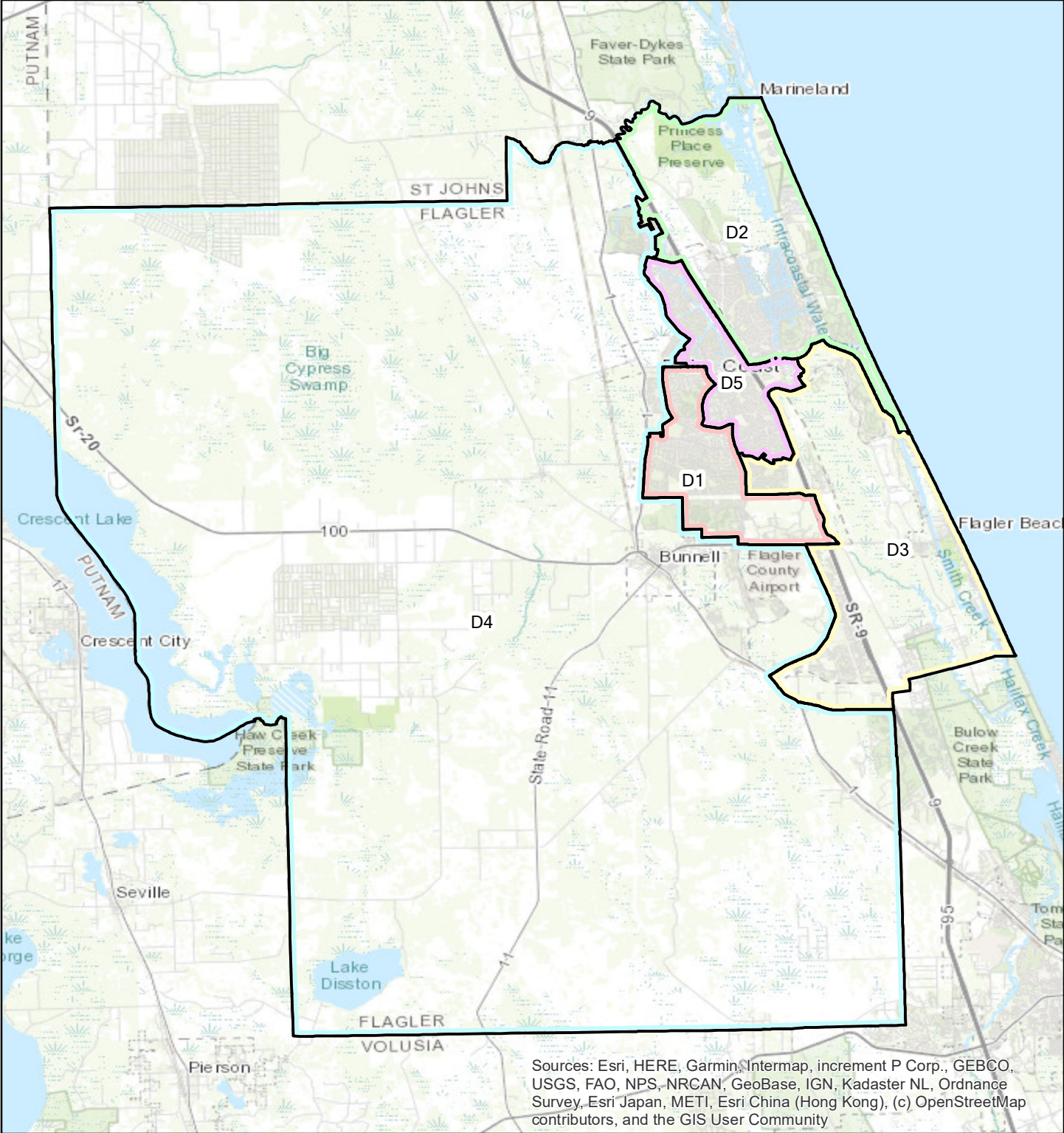
Flagler County Population: 115,378  
 District Even Value: 23,075.6



District Plan	Population	# Deviation From Even Value	% Deviation From Even Value
D1	22919	-157	-0.680
D2	22125	-951	-4.121
D3	22140	-936	-4.056
D4	24025	949	4.112
D5	24169	1093	4.737

# Proposed Districts (B)

Flagler County Population: 115,378  
 District Even Value: 23,075.6



Sources: Esri, HERE, Garmin, Intermap, increment P Corp., GEBCO, USGS, FAO, NPS, NRCAN, GeoBase, IGN, Kadaster NL, Ordnance Survey, Esri Japan, METI, Esri China (Hong Kong), (c) OpenStreetMap contributors, and the GIS User Community

District Plan	Population	# Deviation From Even Value	% Deviation From Even Value
D1	23069	-7	-0.030
D2	23073	-3	-0.013
D3	23072	-4	-0.017
D4	23078	2	0.009
D5	23086	10	0.043