



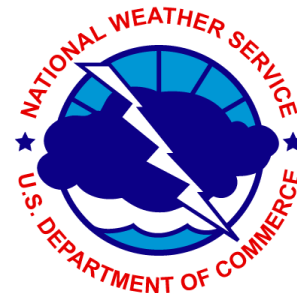
Unified Emergency Operations Center



0500hrs Dorian Briefing
September 3, 2019

Flagler County Emergency Management

All weather information provided by the
National Weather Service





Unified Emergency Operations Center



The Latest on Hurricane Dorian as of 0500hrs

- The tropical cyclone was STILL about 250 miles southeast of Flagler County
- Max sustained winds were 120 mph making Dorian a dangerous Category 3 Hurricane.
- Movement is stationary with a pressure was 950 mlb

Where is it expected to go?

- A very slow drift to the north northwest is expected to begin at some point today.
- Then a gradual turn to the northwest is expected later today then a turn to the northeast on Wednesday.
- This will bring the center dangerously near the Florida east coast late Tuesday and or into Wednesday.
- The forecast track is further off shore, HOWEVER the cone further off shore but close enough to be of concern.
- Exactly where and when this motion and turn occurs will be pivotal to our local weather and there is great uncertainty in that.

Likely impacts on Flagler County, depending on storm track, size and intensity:

- Conditions will deteriorate Tuesday with gales moving up the coast strengthening to tropical storm force winds late tonight.
- Tropical Storm Force Winds are expected with a time frame overnight Tuesday into Wednesday.
- Large 15-20 ft breakers will impact the beaches Tuesday and Wednesday causing significant beach erosion which is already occurring.
- Significant Storm surge inundation of 4 to 7 ft is likely along the Atlantic Coast and Intracoastal Waterway
- Additional surge is likely along lakes and rivers connected to the St. Johns River including Haw Creek and Dead Lake.

Possible impacts on Flagler County, depending on storm track, size and intensity:

- The risk of hurricane conditions has decreased and trends will need to be watched.



Unified Emergency Operations Center



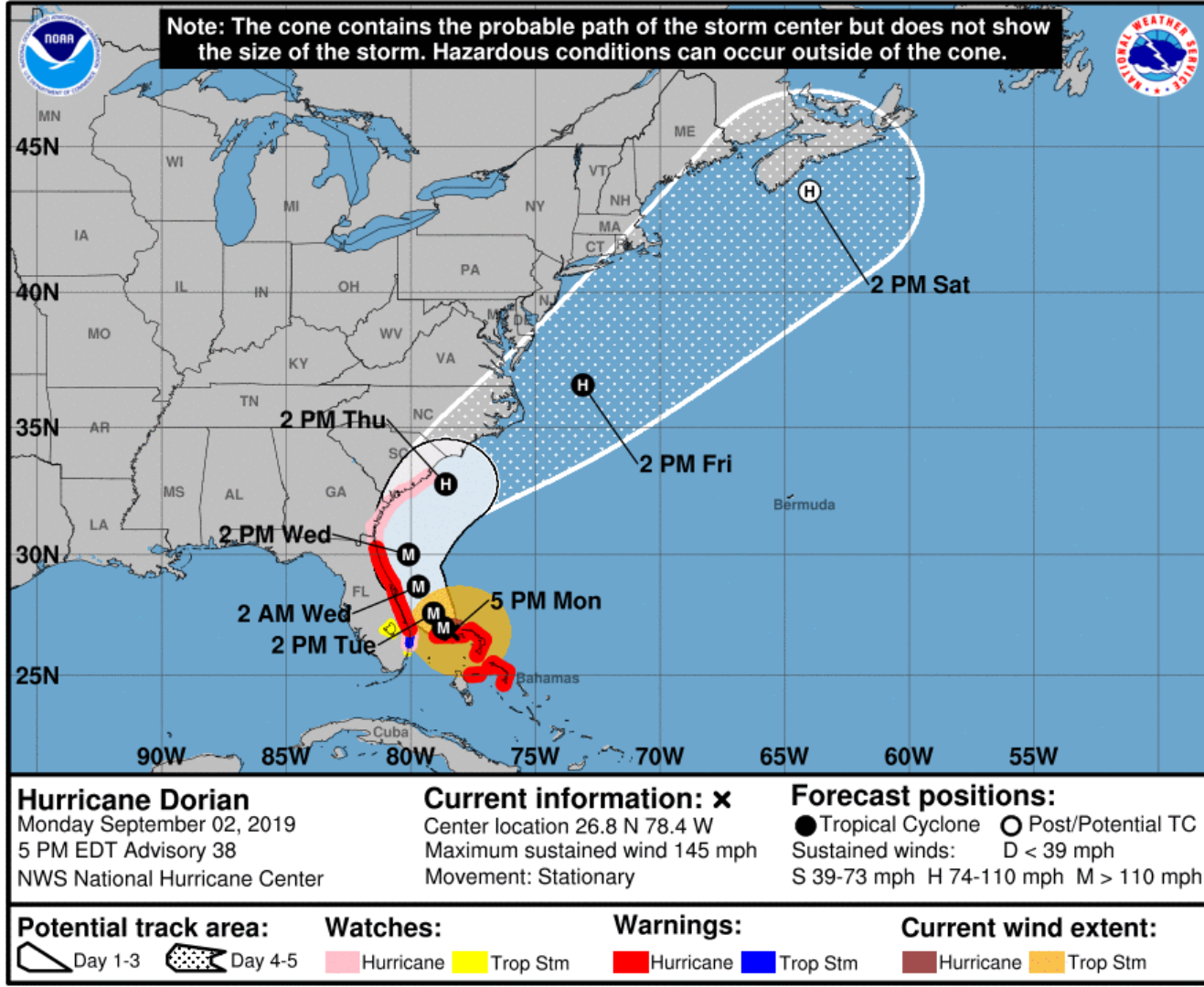
ADVISORIES, WATCHES AND WARNINGS

- Hurricane Warning for all of Flagler.
- Storm Surge Warning is in place for coastal areas.
- Flood warning for inland rivers and lakes (Dead and Crescent Lake)
- High Surf, and rip current advisories in place.
- No other bulletins are in place at this time
- Check <http://www.weather.gov/jax/> for the latest warnings / updates



Forecast Track and Intensity:

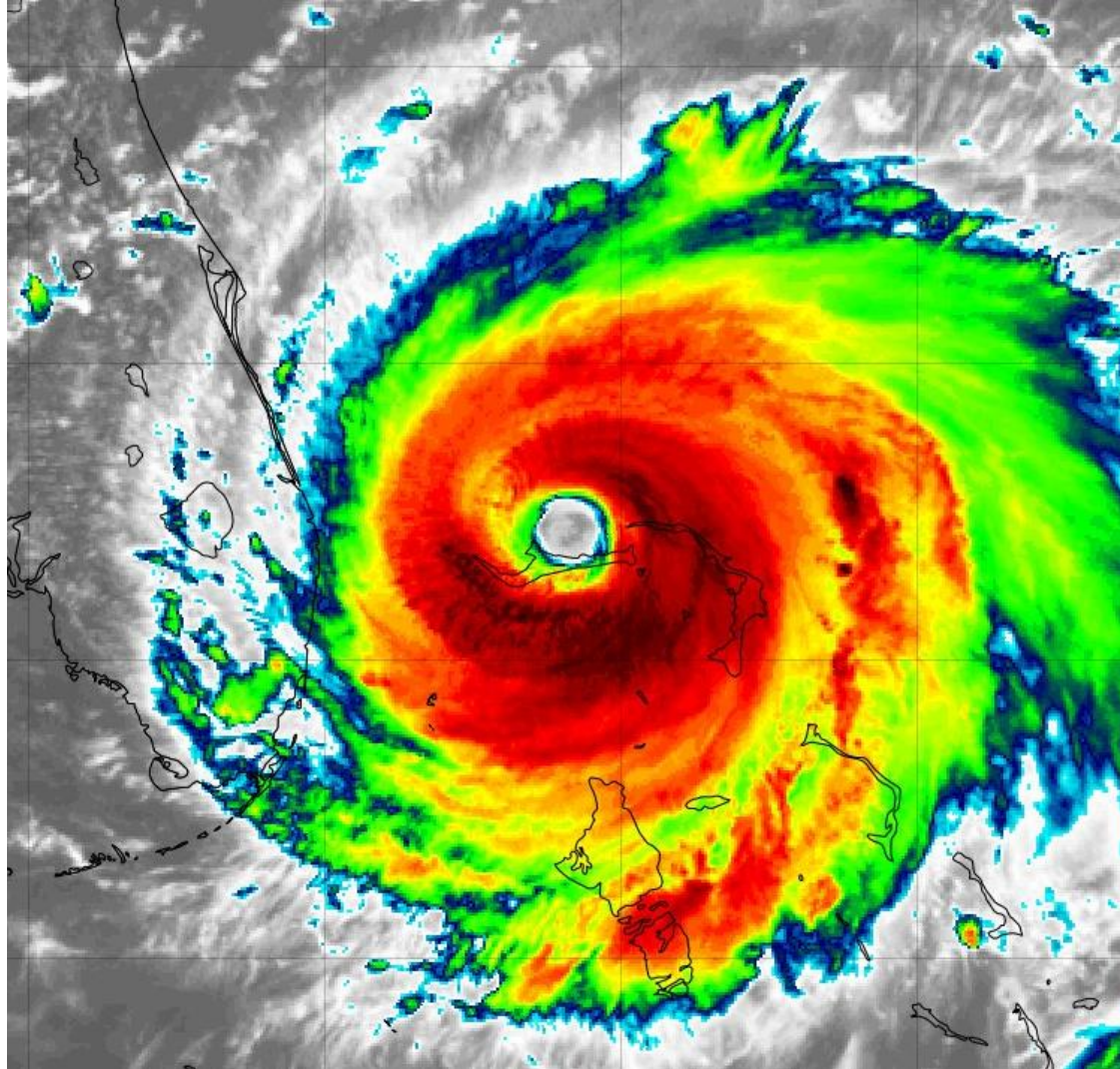
- Latest guidance continues for a northward storm 75-100 miles off shore the FL East coast.
- There is still some uncertainty in the track. Any westward shift will increase impacts to the area.
- Though off shore, Tropical Storm Force to possibly Hurricane Force winds are likely along with storm surge.
- Monitor the latest from NHC.





About Dorian:

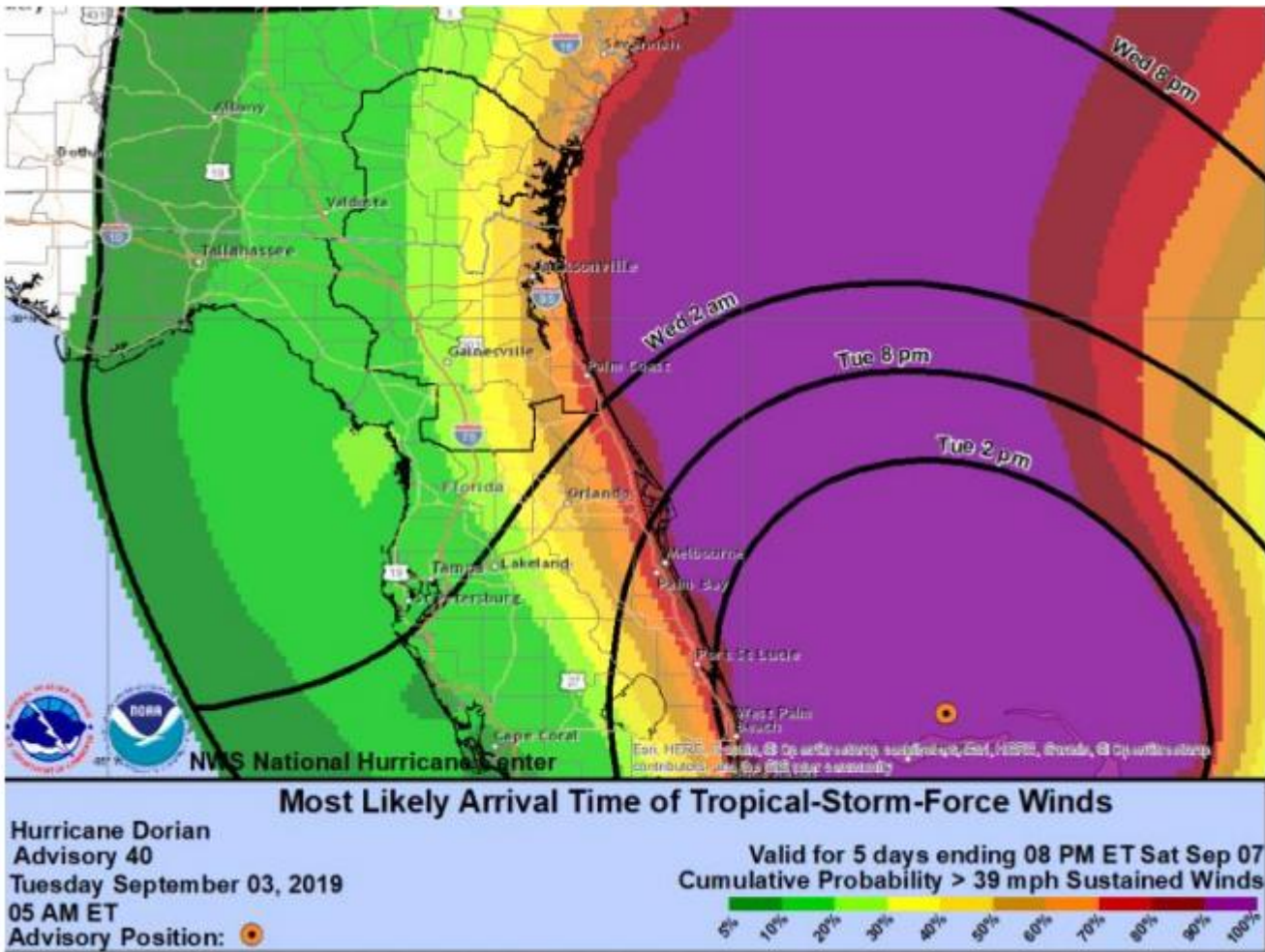
- Cat 2 hurricane.
- Max wind 120 mph, stationary, pressure 950 mlb.
- Fluctuations in strength are likely.
- Hurricane force winds extend 45 miles from the center, tropical storm force winds extend 160 miles from the center.





Wind Arrival Time:

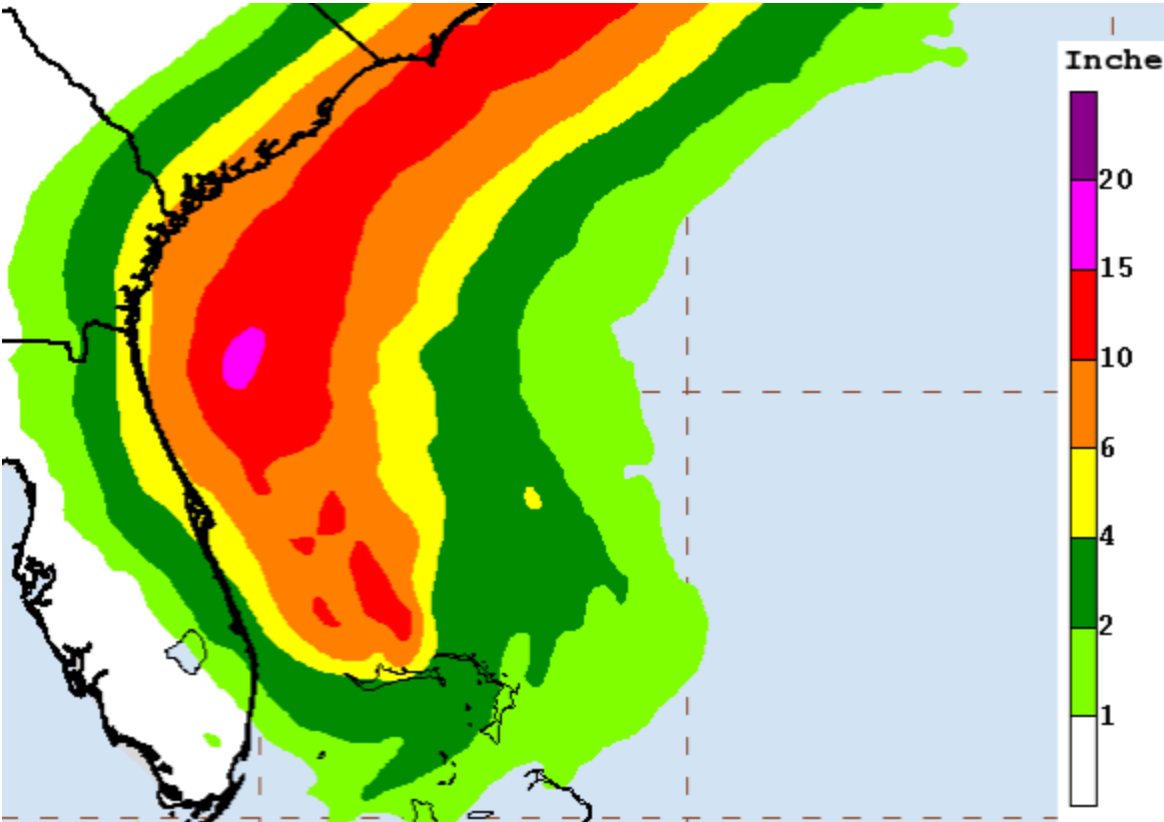
- Expected arrival of tropical storm force winds now expected late tonight.
- Nor'easter conditions will be setting in ahead of the tropical cyclone bringing localized gales to the coast later today.
- ANY change in the status of Dorian can change these outcomes!





Rainfall Forecast:

- 4-6 inches of rain is possible.
- Localized amounts may be higher.
- But can change if the track changes.





Unified Emergency Operations Center



Flagler County Talking Points:

- Breezy to windy conditions with gales at the coast will set in by Tuesday afternoon or evening.
- Tropical Storm Force Winds will set in overnight tonight, starting at the coast first then inland.
- **Large 15 - 20 foot breakers will impact the beaches Tuesday and Wednesday**
- Heavy rainfall is likely with 6 - 8 inches possible. Locally heavier amounts possible.
- Hurricane conditions (sustained winds of 74 mph or higher) are possible early and through the day Wednesday DEPENDING on storm track and structure.
- Significant Storm Surge of 4 - 7 feet is likely but this can change, especially if the storm changes course.
- **There is great uncertainty and the cone of error does include the local area. A Florida landfall is possible!**

Stay Up to Date!

Stay up to date as things can change!

Only use official sources of information.

NWS Jax www.weather.gov/Jax

National Hurricane Center: <http://www.hurricanes.gov>

NWS Briefing <http://www.weather.gov/media/jax/briefings/nws-jax-briefing.pdf>

Flagler EM www.FlaglerCounty.org/Emergency

Social Media:

Facebook: <https://www.facebook.com/FlaglerEOC/>

Twitter: <https://twitter.com/FlaglerEM>

Instagram: <https://www.Instagram.com/FlaglerEOC/>

Updates will be sent out as needed.

Any questions please e mail me at:

Bpickering@FlaglerCounty.org

