



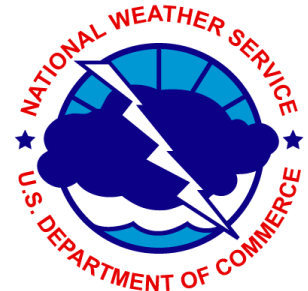
Unified Emergency Operations Center



**1700hrs Dorian Briefing
September 1, 2019**

Flagler County Emergency Management

All weather information provided by the
National Weather Service





Unified Emergency Operations Center



The Latest on Hurricane Dorian as of 1700hrs

- The tropical cyclone was about 305 miles southeast of Flagler County
- Max sustained winds were 185 mph making Dorian an extremely dangerous Category 5 Hurricane.
- Movement was west at 5 mph with a pressure was 910 mb

Where is it expected to go?

- A west to west northwest course is expected to continue the next few days with a further slowing in speed.
- This will bring the center of Dorian through the NW Bahamas tonight and Monday and near the Florida east coast by early Tuesday.
- Then Dorian is forecast to turn northward and parallel the coast, but could pass very close to the coast or even inland.
- Exactly where the turn occurs will be pivotal to our local weather and there is great uncertainty in that.

Likely impacts on Flagler County, depending on storm track, size and intensity:

- Dangerous rip currents risks with rough surf are increasing.
- Beach erosion is very likely along with gales along the coast.
- Some low land flooding near times of high tide in the Intracoastal is possible well ahead of the storm
- Tropical Storm Force Winds are becoming increasingly likely with a time frame Tuesday afternoon into Wednesday.
- Large 15-25 ft breakers may impact the beaches Tuesday and Wednesday causing significant beach erosion.

Possible impacts on Flagler County, depending on storm track, size and intensity:

- The risk of hurricane conditions has increased SLIGHTLY and trends will need to be watched.
- Significant Storm surge inundation is becoming increasingly likely along the Atlantic Coast and Intracoastal Waterway.



Unified Emergency Operations Center



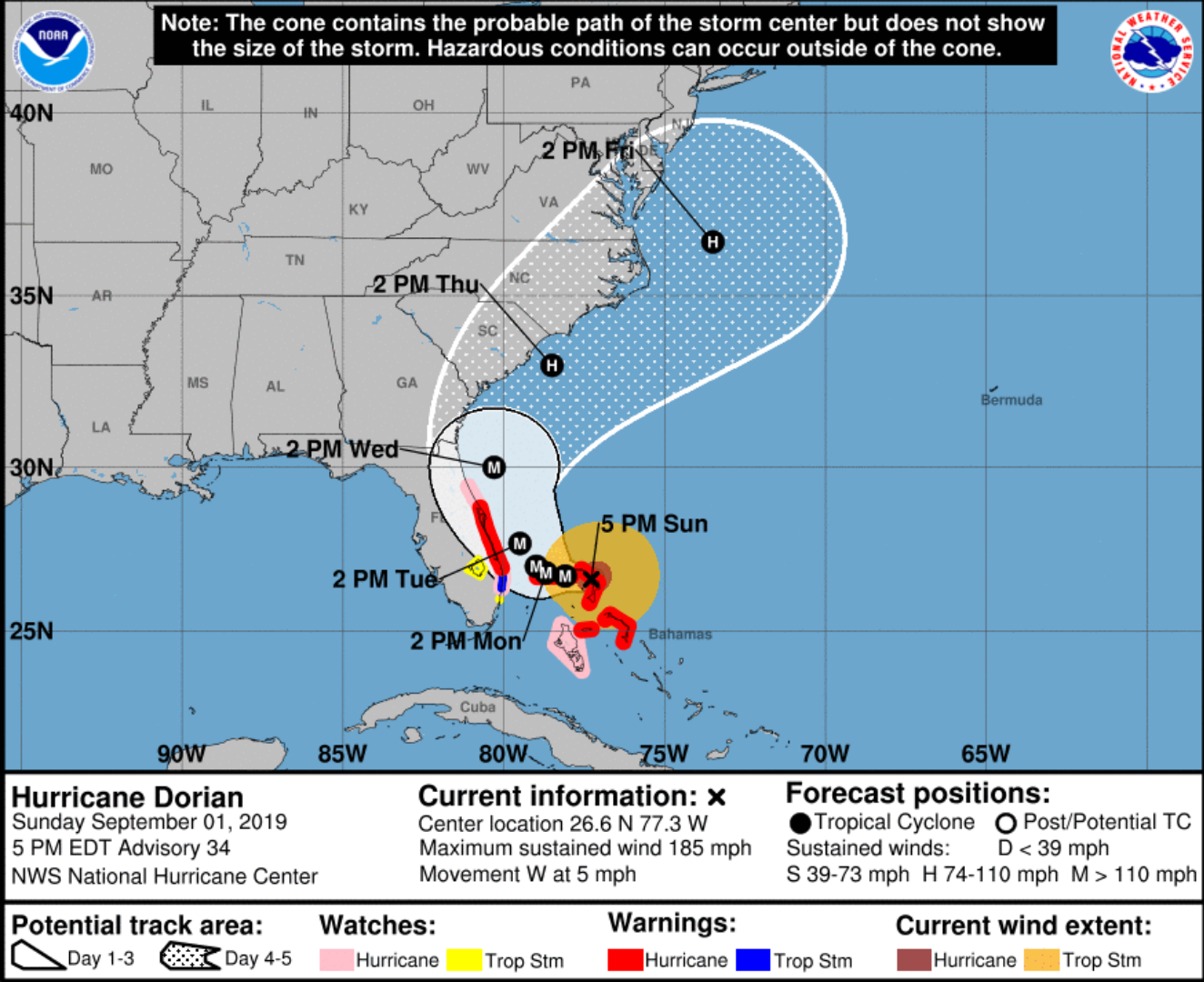
ADVISORIES, WATCHES AND WARNINGS

- High Risk of Rip Currents
- Coastal Flood Advisory is in place.
- High Surf Advisory
- No other bulletins are in place at this time
- Hurricane Watches and Storm Surge Watch may be issued Monday Morning.
- Check <http://www.weather.gov/jax/> for the latest warnings / updates



Forecast Track and Intensity:

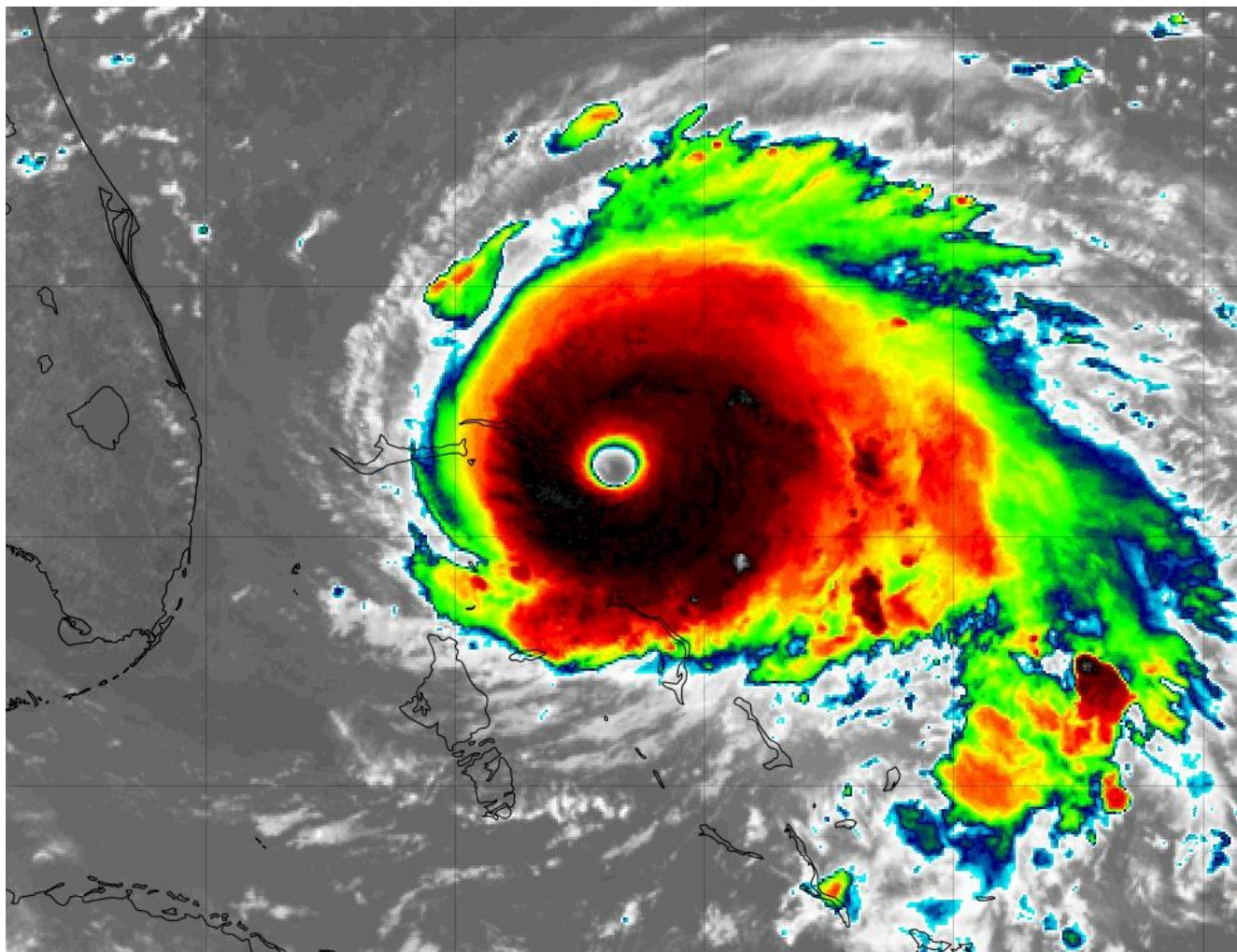
- Latest guidance suggests a northward storm track near the Florida east coast Tuesday and Wednesday.
- There is still some uncertainty in the track. Any westward shift could yield severe impacts to the area.
- Tropical Storm Force to possibly Hurricane Force winds are likely.
- Monitor the latest from NHC.





About Dorian:

- Cat 5 hurricane.
- Max wind 185 mph, moving W at 5 mph, pressure 910 mlb. Gusts to 225 mph.
- Fluctuations in strength are possible.
- Hurricane force winds extend 45 miles from the center, tropical storm force winds extend 140 miles from the center.





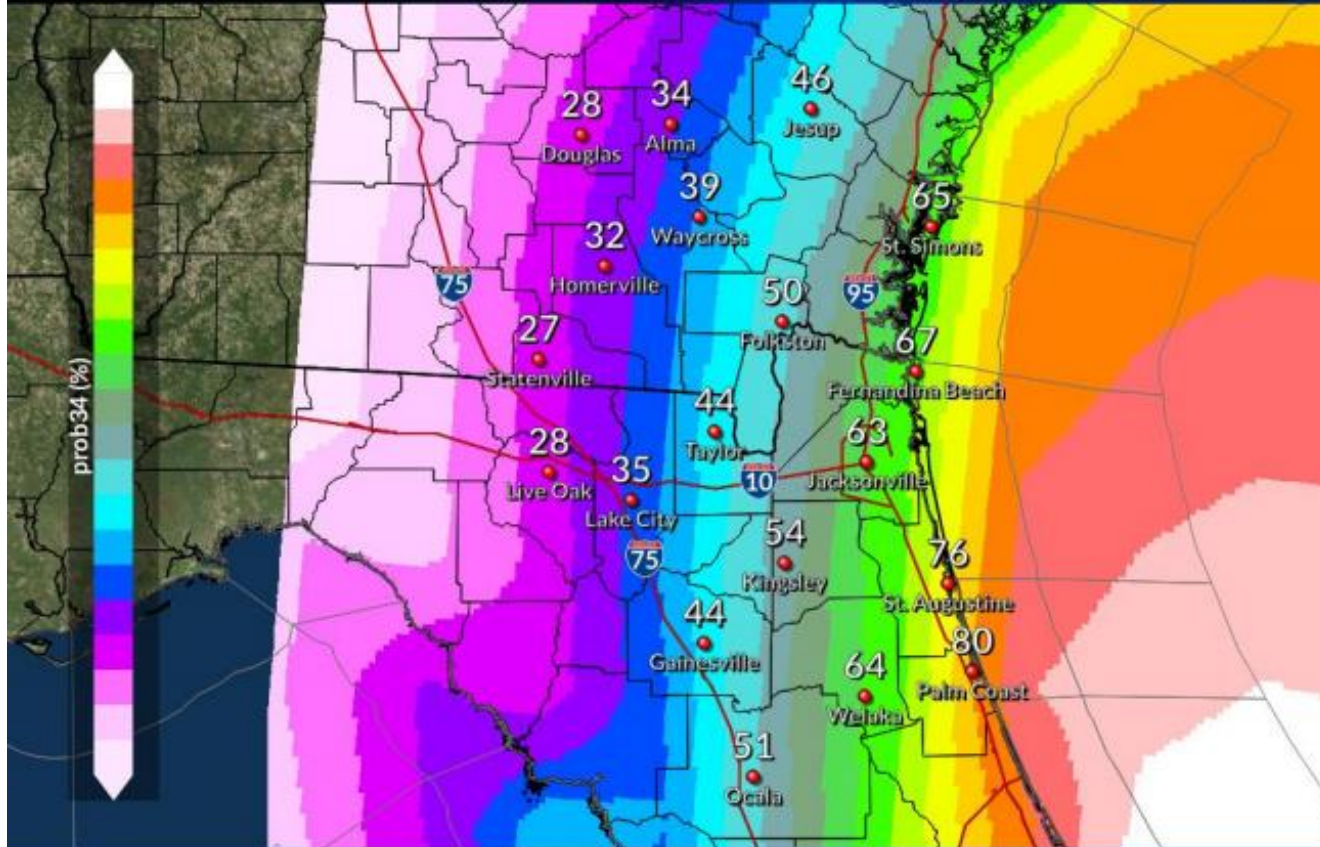
Tropical Storm Force Wind Probabilities

Weather Forecast Office
Jacksonville, FL



34 knots

Issued Sep 01, 2019 11:58 AM EDT



Cumulative Wind Risk Chances:

- There is a 80% chance of at least 1 minute of 39 mph or stronger wind in Flagler County. 86% chance beaches.
- Hurricane Wind Risk is 25% inland, 33% beaches.
- These numbers have increased slightly and that will have to be watched.
- Watch the trends!!



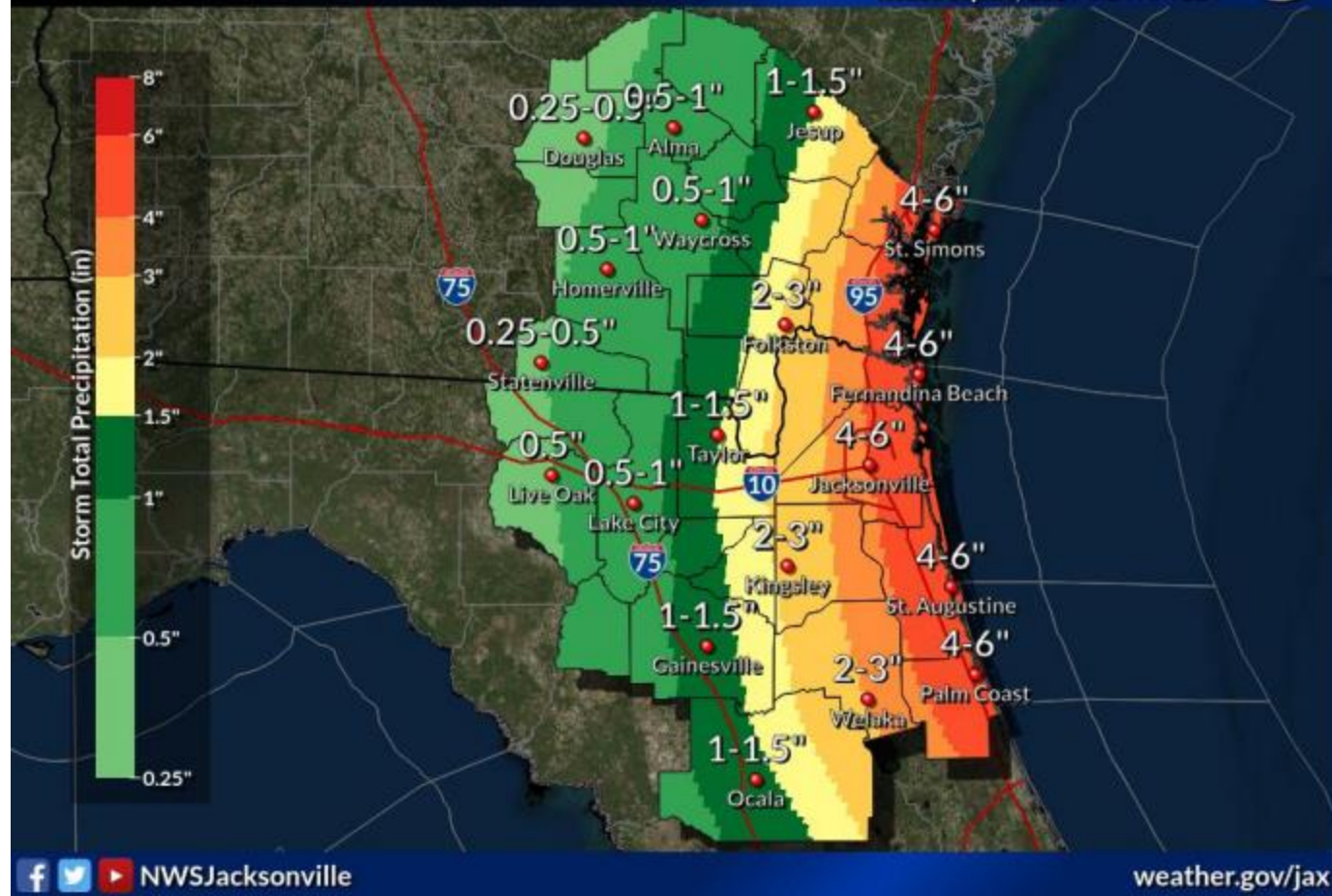
Total Rainfall through Thursday

Weather Forecast Office
Jacksonville, FL
Issued Sep 01, 2019 5:24 AM EDT



Rainfall Forecast:

- 4-6 inches of rain is possible.
- Localized amounts may be higher.
- But can change if the track changes.





Unified Emergency Operations Center



Flagler County Talking Points:

- Overall breezy conditions expected through early Tuesday with passing showers with conditions deteriorating Tuesday Afternoon.
- Dangerous marine conditions, rip currents and large surf will impact the beaches
- Some low level nuisance flooding is possible near times of high tide in the Intracoastal and beaches.
- Heavy rainfall is likely with 4 - 6 inches possible. Locally heavier amounts possible.
- Arrival of winds is increasingly likely on Tuesday afternoon lasting into Wednesday most likely Tropical Storm Force but hurricane conditions are still possible.
- Significant Storm Surge is still very possible to what extent is not known especially if the storm changes course.
- *There is great uncertainty and the cone of error does include the local area. A Florida landfall is possible!*

Stay Up to Date!

Stay up to date as things can change!

Only use official sources of information.

NWS Jax www.weather.gov/Jax

National Hurricane Center: <http://www.hurricanes.gov>

NWS Briefing <http://www.weather.gov/media/jax/briefings/nws-jax-briefing.pdf>

Flagler EM www.FlaglerCounty.org/Emergency

Social Media:

Facebook: <https://www.facebook.com/FlaglerEOC/>

Twitter: <https://twitter.com/FlaglerEM>

Instagram: <https://www.Instagram.com/FlaglerEOC/>

Updates will be sent out as needed.

Any questions please e mail me at:

Bpickering@FlaglerCounty.org

