

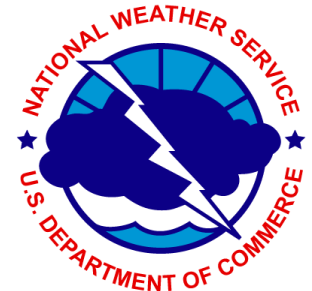


Unified Emergency Operations Center

1700hrs Dorian Briefing
August, 31, 2019

Flagler County Emergency Management

All weather information provided by the
National Weather Service





Unified Emergency Operations Center



The Latest on Hurricane Dorian as of 1700hrs

- The tropical cyclone was about 500 miles east southeast of Flagler County
- Max sustained winds were 150 mph making Dorian a Category 4 Hurricane.
- Movement was west at 8 mph with a pressure was 945 mlb

Where is it expected to go?

- A west to west northwest course is expected to continue the next few days with a slowing in speed.
- This will bring the center of Dorian somewhere across the west Bahamas by Monday.
- Then Dorian is forecast to turn northward and or parallel Florida on Tuesday and Wednesday.
- Exactly where the turn occurs will be pivotal to our local weather and there is great uncertainty in that.

Likely impacts on Flagler County, depending on storm track, size and intensity:

- Dangerous rip currents risks with rough surf are increasing.
- Beach erosion is very likely along with gales along the coast.
- Some low land flooding near times of high tide in the Intracoastal is possible well ahead of the storm

Possible impacts on Flagler County, depending on storm track, size and intensity:

- Tropical Storm Conditions are possible starting on Tuesday potentially lasting through Wednesday.
- The risk of hurricane conditions has decreased SLIGHTLY and may fluctuate further, but this is uncertain.
- Storm surge is possible to what extent is not known.



Unified Emergency Operations Center

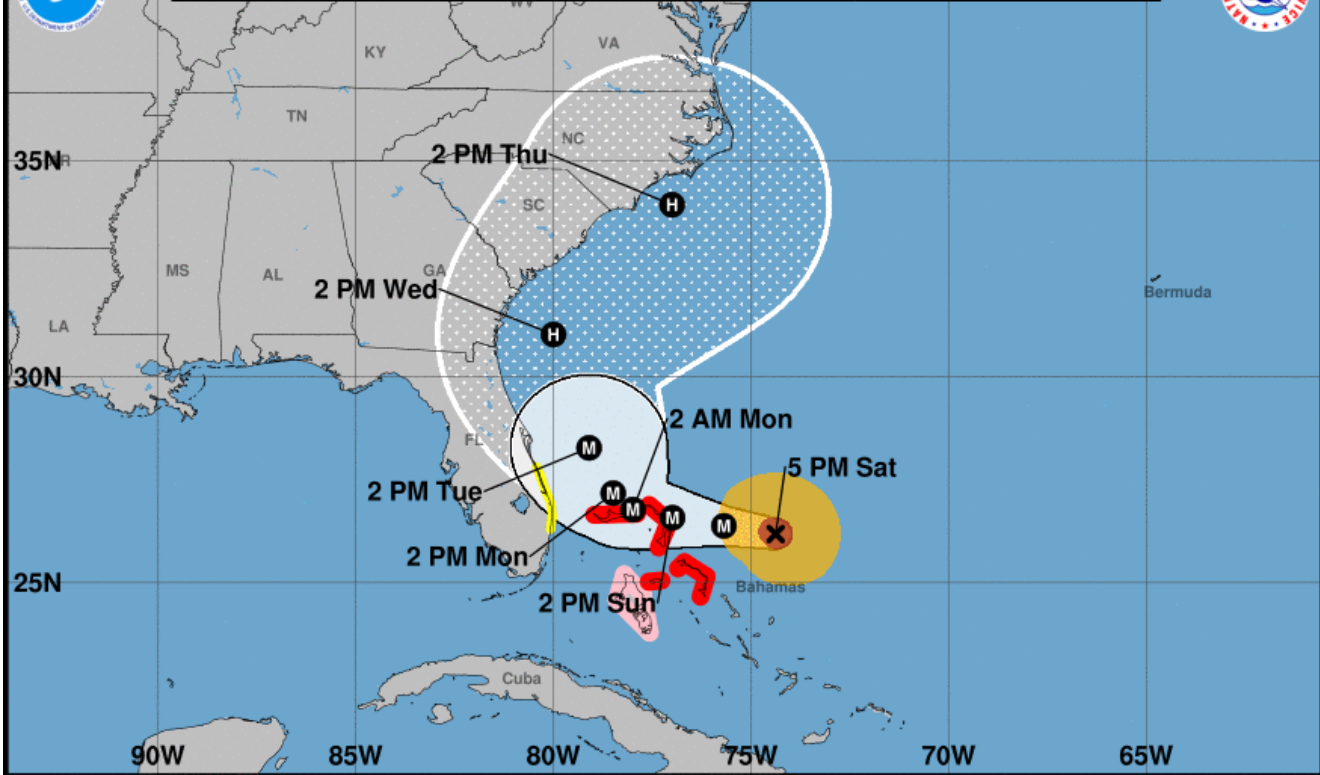


ADVISORIES, WATCHES AND WARNINGS

- High Risk of Rip Currents
- Coastal Flood Advisory is in place.
- No other bulletins are in place at this time
- Check <http://www.weather.gov/jax/> for the latest warnings / updates



Note: The cone contains the probable path of the storm center but does not show the size of the storm. Hazardous conditions can occur outside of the cone.



Hurricane Dorian
 Saturday August 31, 2019
 5 PM EDT Advisory 30
 NWS National Hurricane Center

Current information: x
 Center location 26.2 N 74.4 W
 Maximum sustained wind 150 mph
 Movement W at 8 mph

Forecast positions:
 ● Tropical Cyclone ○ Post/Potential TC
 Sustained winds: D < 39 mph
 S 39-73 mph H 74-110 mph M > 110 mph

Potential track area:
 Day 1-3 (white outline) Day 4-5 (dotted pattern)

Watches:
 Hurricane (pink) Trop Stm (yellow)

Warnings:
 Hurricane (red) Trop Stm (blue)

Current wind extent:
 Hurricane (brown) Trop Stm (orange)

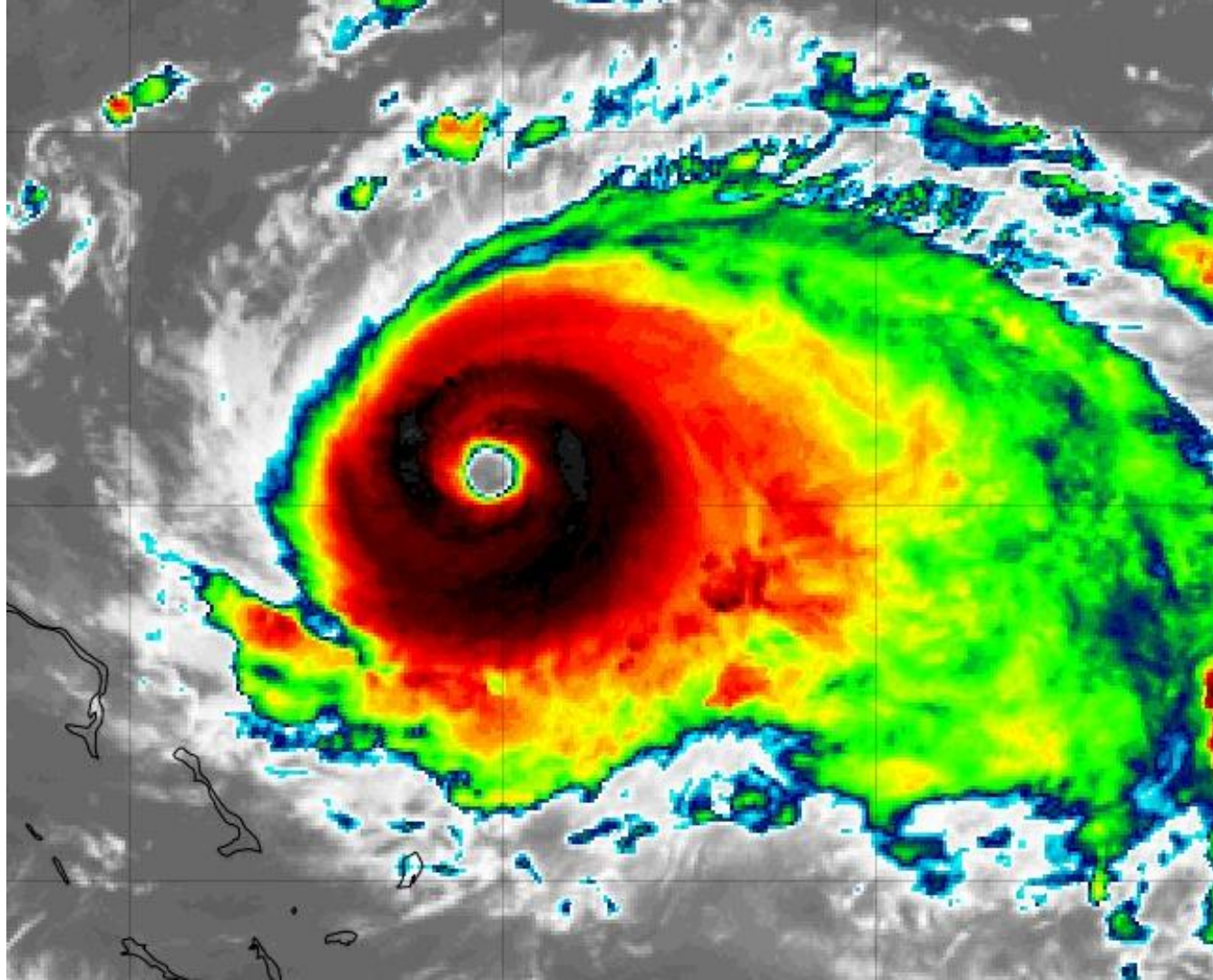
Forecast Track and Intensity:

- There is increasing confidence in a track east of the county.
- There is still some uncertainty in the track. Any westward shift will yield severe impacts to the area.
- Not all models agree on an eastward track! The cone of error still covers the region.
- Monitor the latest from NHC.



About Dorian:

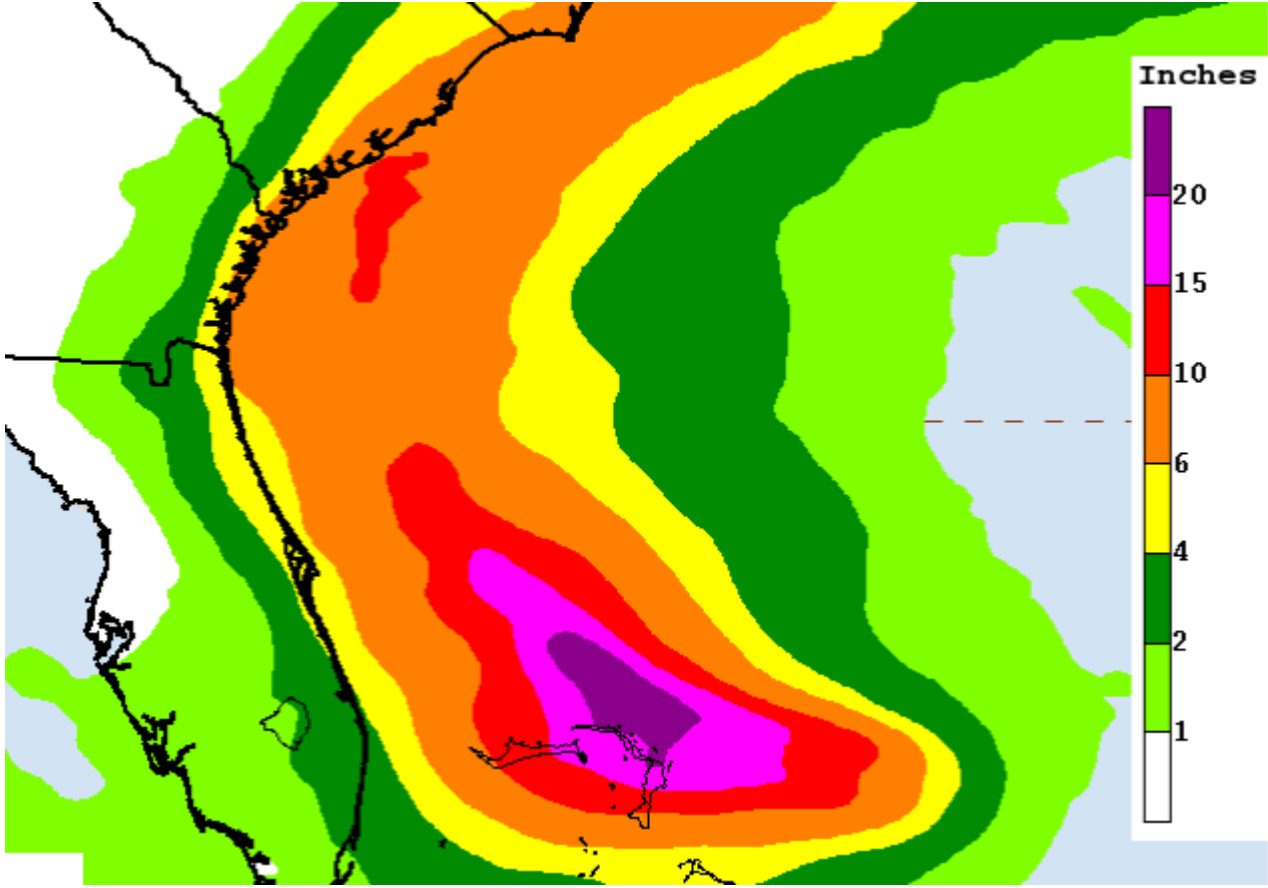
- Cat 4 hurricane.
- Max wind 150 mph, moving W at 8 mph, pressure 945 mlb,
- Additional strengthening possible.
- Hurricane force winds extend 30 miles from the center, tropical storm force winds extend 105 miles from the center.





Rainfall Forecast:

- 3-5 inches of rain is possible.
- Localized amounts may be higher.
- This is a lot less than first thought but can change if the track changes.





Unified Emergency Operations Center



Flagler County Talking Points:

- Overall breezy, unsettled conditions expected through the weekend and into next week
- Some low level nuisance flooding is possible near times of high tide in the Intracoastal and beaches.
- Heavy rainfall is likely with 3 - 5 inches possible. Locally heavier amounts possible.
- Arrival of tropical storm force winds is possible on Tuesday lasting into Wednesday.
- The risks of hurricane and tropical force winds has stabilized, but can change and likely will.
- Storm Surge is still very possible to what extent is not known especially if the storm changes course.
- *There is great uncertainty in the track and intensity of Dorian and any shift to the west can bring severe impacts locally.*
- All of this can change! Conditions depend on storm track, structure and intensity.

Stay Up to Date!

Stay up to date as things can change!

Only use official sources of information.

NWS Jax www.weather.gov/Jax

National Hurricane Center: <http://www.hurricanes.gov>

NWS Briefing <http://www.weather.gov/media/jax/briefings/nws-jax-briefing.pdf>

Flagler EM www.FlaglerCounty.org/Emergency

Social Media:

Facebook: <https://www.facebook.com/FlaglerEOC/>

Twitter: <https://twitter.com/FlaglerEM>

Instagram: <https://www.instagram.com/FlaglerEOC/>

Updates will be sent out as needed.

Any questions please e mail me at:

Bpickering@FlaglerCounty.org

