



Unified Emergency Operations Center

1700hrs Severe Weather Briefing
January, 22, 2017

Flagler County Emergency Management

All weather information provided by the
National Weather Service





Unified Emergency Operations Center



A significant severe weather outbreak is likely in the region today!

- The Storm Prediction Center now has **most of Flagler County in the High Risk category**
- This is unprecedented for our local area with large dangerous violent tornadoes possible and winds over 75 mph.

Likely impacts on Flagler County:

- Numerous severe storms will likely effect the area anytime through the evening
- Highest Threat through 2100hrs

Possible impacts on Flagler County:

- Intense winds of 60-80 mph with any of the storms
- There will be a risk of isolated tornadoes
- Large hail is also possible with severe thunderstorms
- There is potential for large violent tornadoes today



Unified Emergency Operations Center



What is the Risk Category?

- System used to determine chances of severe storms
- **High Risk is AT THE TOP of the scale which is for Flagler County for today.**
- **Exceptionally rare for this risk to be posted in Florida**

Understanding Severe Thunderstorm Risk Categories

THUNDERSTORMS (no label)	1 - MARGINAL (MRGL)	2 - SLIGHT (SLGT)	3 - ENHANCED (ENH)	4 - MODERATE (MDT)	5 - HIGH (HIGH)
No severe* thunderstorms expected	Isolated severe thunderstorms possible	Scattered severe storms possible	Numerous severe storms possible	Widespread severe storms likely	Widespread severe storms expected
Lightning/flooding threats exist with <u>all</u> thunderstorms	Limited in duration and/or coverage and/or intensity	Short-lived and/or not widespread, isolated intense storms possible	More persistent and/or widespread, a few intense	Long-lived, widespread and intense	Long-lived, very widespread and particularly intense
					
• Winds to 40 mph • Small hail	• Winds 40-60 mph • Hail up to 1" • Low tornado risk	• One or two tornadoes • Reports of strong winds/wind damage • Hail ~1", isolated 2"	• A few tornadoes • Several reports of wind damage • Damaging hail, 1 - 2"	• Strong tornadoes • Widespread wind damage • Destructive hail, 2" +	• Tornado outbreak • Derecho

* NWS defines a severe thunderstorm as measured wind gusts to at least 58 mph, and/or hail to at least one inch in diameter, and/or a tornado. All thunderstorm categories imply lightning and the potential for flooding. Categories are also tied to the probability of a severe weather event within 25 miles of your location.



National Weather Service

www.spc.noaa.gov



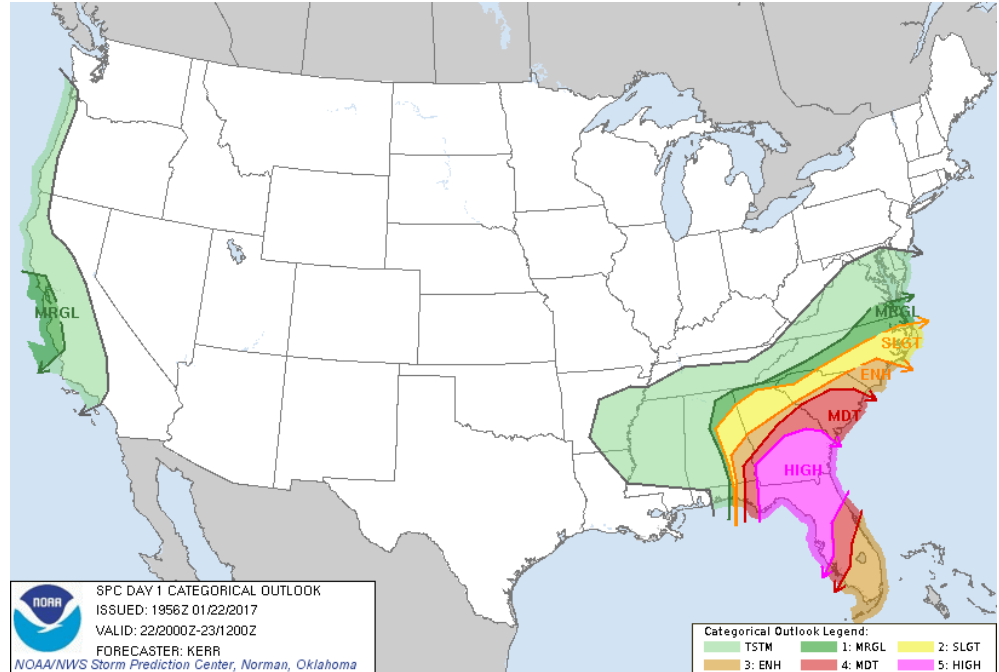


Unified Emergency Operations Center



Severe Weather Risk:

- High Risk has been **expanded to include all of Flagler County.**
- Risk of Tornadoes 30%
- Risk of significant tornadoes and winds over 75 mph is 10%.
- The risk of damaging winds over 57 mph is now **45%.**
- **This is VERY RARE for our area!**



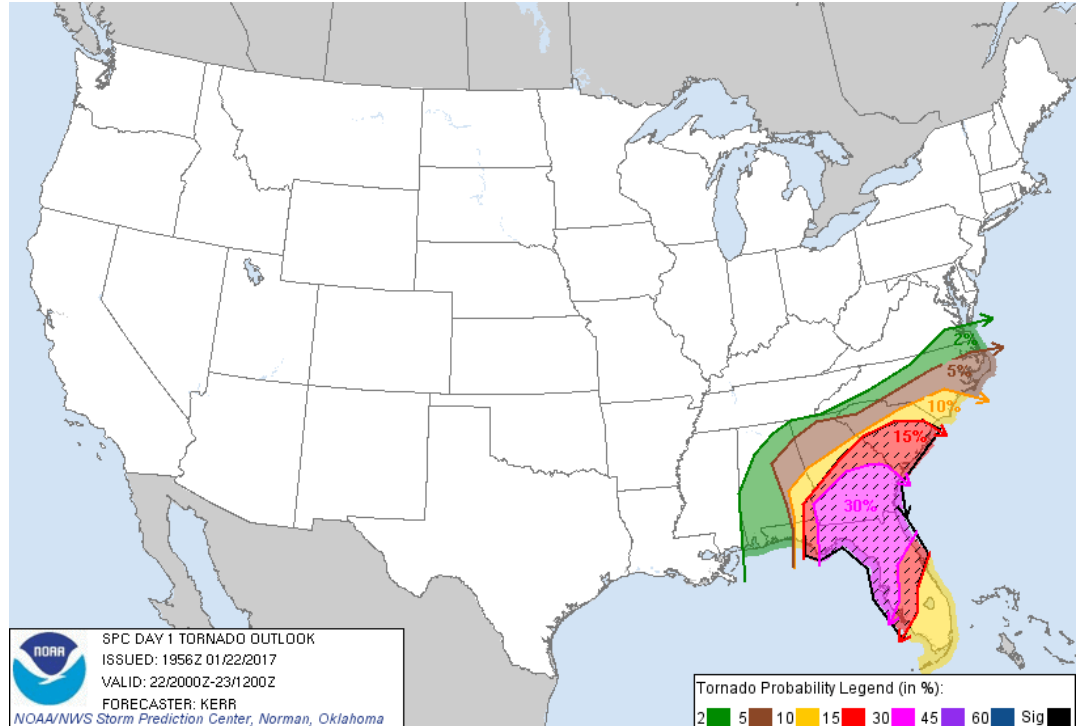


Unified Emergency Operations Center



Sunday's Tornado Risk

- Probability of severe weather 25 miles from any point in the pink and red shaded areas is 30%.
- The hatched area represents a 10% or greater probability significant tornadoes EF 2 or stronger.



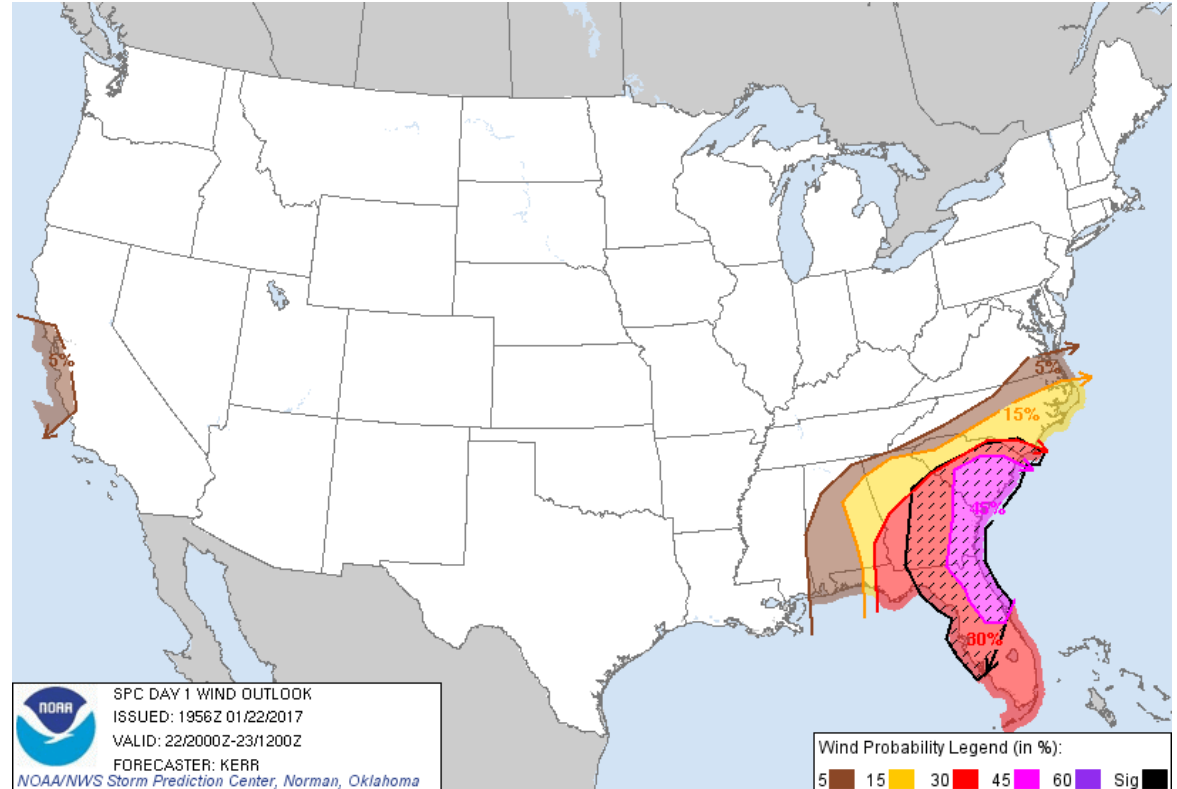


Unified Emergency Operations Center



Sunday's Wind Risk

- Probability of severe winds over 57 mph 25 miles from any point in the pink and red shaded areas **is now 45%.**
- The hatched area represents a 10% or greater probability significant severe winds over 75 mph!



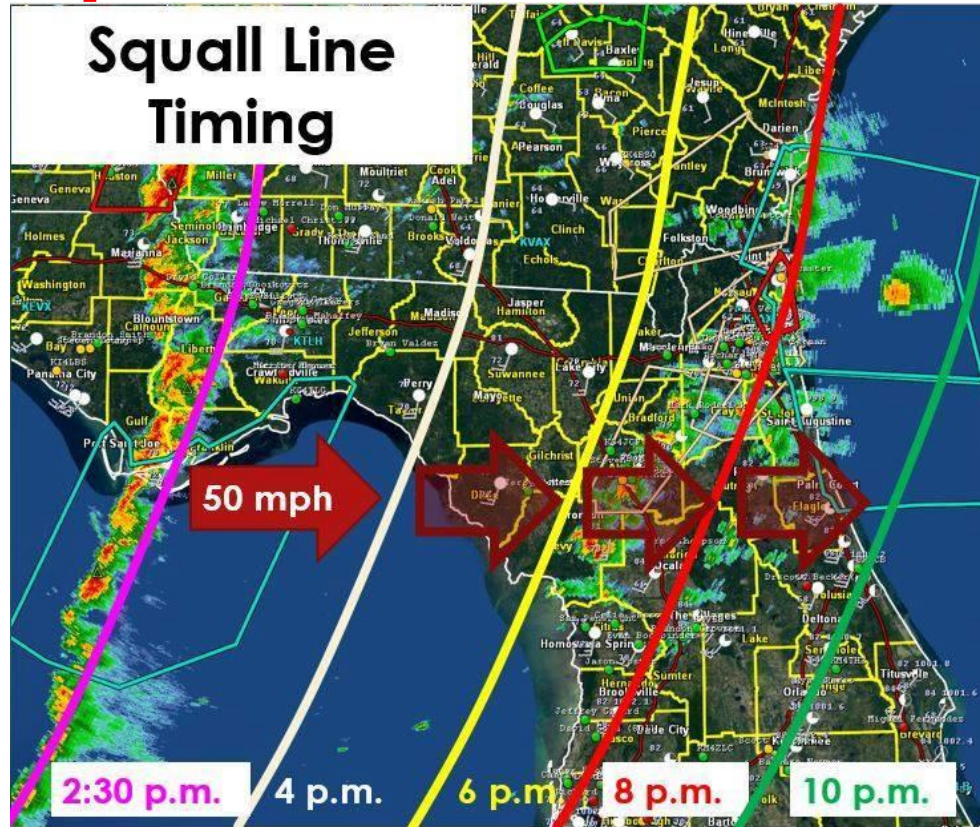


Unified Emergency Operations Center



Squall Line Timing:

- This graphic shows the timing
- Current models show the squall line reaching us between 2000 and 2200
- However storms ahead of the line may form and produce severe weather.





Unified Emergency Operations Center



Preparedness Advice and Actions:

- All interests should stay keenly aware of weather forecasts and updates today.
- Make sure you have a way to **get warnings** and have a plan if warnings are issued.
- Secure lightweight items that could be blown about in squally winds.
- Take this very seriously, as seriously as you would a hurricane watch

EM Actions:

- EM is also in conference calls with the State and National Weather Service
- Emergency Management is staffing the EOC
- Preparedness advice has been posted on FlaglerEmergency.com and social media.



Unified Emergency Operations Center



Talking Points:

- Numerous severe storms expected today. High risk means potential for strong tornadoes
- Highest threat through 9 PM in Flagler County
- Review your warning methods and what to do if warnings are issued
- Chief concerns are widespread wind damage, large hail and tornadoes.
- **Storms will move very fast, much faster than summertime storms.**
- **Remember winter severe storms can be much stronger than storms in the summer.**

Stay Up to Date!

Stay up to date as things can change!

NWS Jax www.weather.gov/Jax

Storm Prediction Center: <http://www.spc.noaa.gov/>

NWS Briefing <http://www.weather.gov/media/jax/briefings/nws-jax-briefing.pdf>

Flagler EM www.FlaglerEmergency.com

Social Media

Facebook: <https://www.facebook.com/FlaglerEOC/>

Twitter: <https://twitter.com/FlaglerEM>

Local NWS Forecast <http://forecast.weather.gov/MapClick.php?zoneid=FLZ038>

Updates will be sent out as needed through the weekend.

Any questions please call me at 386-931-5077 or e mail me at:

Bpickering@FlaglerCounty.org

