



# **Belle Terre Park**

## **Facility Assessment and Recommendations**

# History/Background

- The swimming pool and buildings were constructed in 1985
- Flagler County transferred the Belle Terre Community Park to the City of Palm Coast in 2001
- Racquetball/handball courts constructed prior to 2007
- Tennis Courts constructed prior to 2007
- Playground constructed in 2007 with shades added in 2018
- Middle school expansion and traffic rerouting in 2007



# Belle Terre Park

## Original Concept (2006 View)

- Middle School Amenity
- Shared direct access from Belle Terre Parkway
- Connected park setting
- Parking independent of bus route





# Belle Terre Park

## Middle school expansion (2007)

- New building location
- Add detention areas
- Revise traffic pattern
- Eliminate direct connection to Belle Terre Pkwy

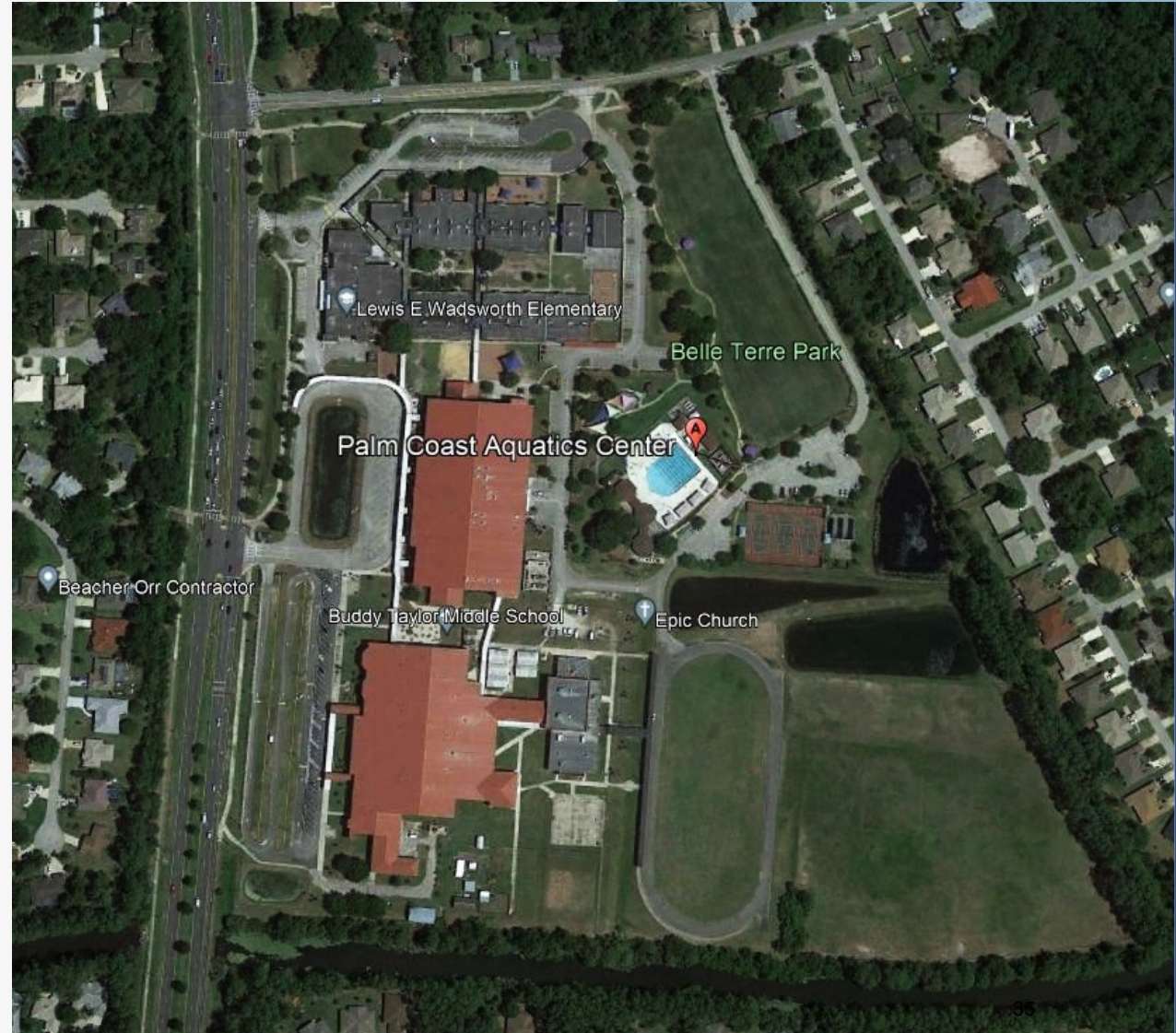




# Belle Terre Park

## Current Concept (2021 View)

- Limited exposure to pool and other amenities
- Difficult access/bus route conflict
- Insufficient parking
- Access from neighborhood road
- Disconnected park setting
- Serves as a neighborhood park





# Buddy Taylor Bus Route

- During the school year the bus traffic occurs from 7am-7:30am and 1-2pm
- Traffic goes through the parking lot for the pool and its surrounding amenities



3/14/2022

1:3,146  
0 0.03 0.06 0.12 mi  
0 0.05 0.1 0.2 km  
Source: Esri, Maxar, GeoEye, Earthstar Geographics, CNES/Airbus DS, USDA, USGS, AeroGRID, IGN, and the GIS User Community





# Wadsworth Pick-up Line

- During the school year traffic begins at 8:30am-9am for drop and 3:30pm-4pm for pick up
- Traffic goes through the parking lot for the pool and it's surrounding amenities.



3/14/2022

1:2 243  
0 0.02 0.04 0.06 mi  
0 0.04 0.07 0.14 km  
Source: Esri, Maxar, GeoEye, Earthstar Geographics, CNES/Airbus DS, USDA, USGS, AeroGRID, IGN, and the GIS User Community



# Utilization

**Aquatics Center:** Aquatic programming, open swimming, birthday parties, High School swim team, and special events

- FY 20-21: 20,195 total pool attendance (pool closed October and November 2020 due to shutdown during COVID-19 pandemic)

**Tennis Courts:** Open to the public and utilized for tennis and pickleball

**Racquetball/handball courts:** Open to the public

**Field:** Field can be permitted for sport organization. Open green space for residents. Can hold up to two full size soccer fields.

- FY 21-22: Twenty two field reservations
- FY 20-21: Sixteen field reservations
- Limited reservation with no field lights

**Playground:** Equipment for children of all ages. Some equipment is separated for specific age groups.

**Pavilions/Gazebo:** Two Pavilions and one gazebo available to be rented. Used for birthday parties or general resident use.

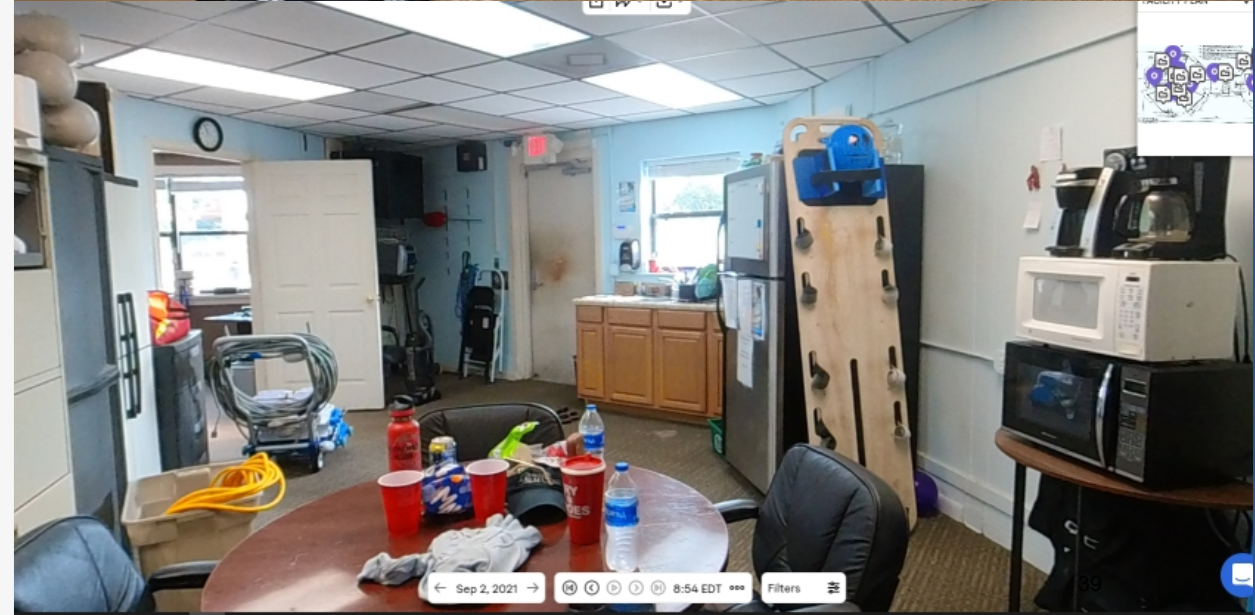
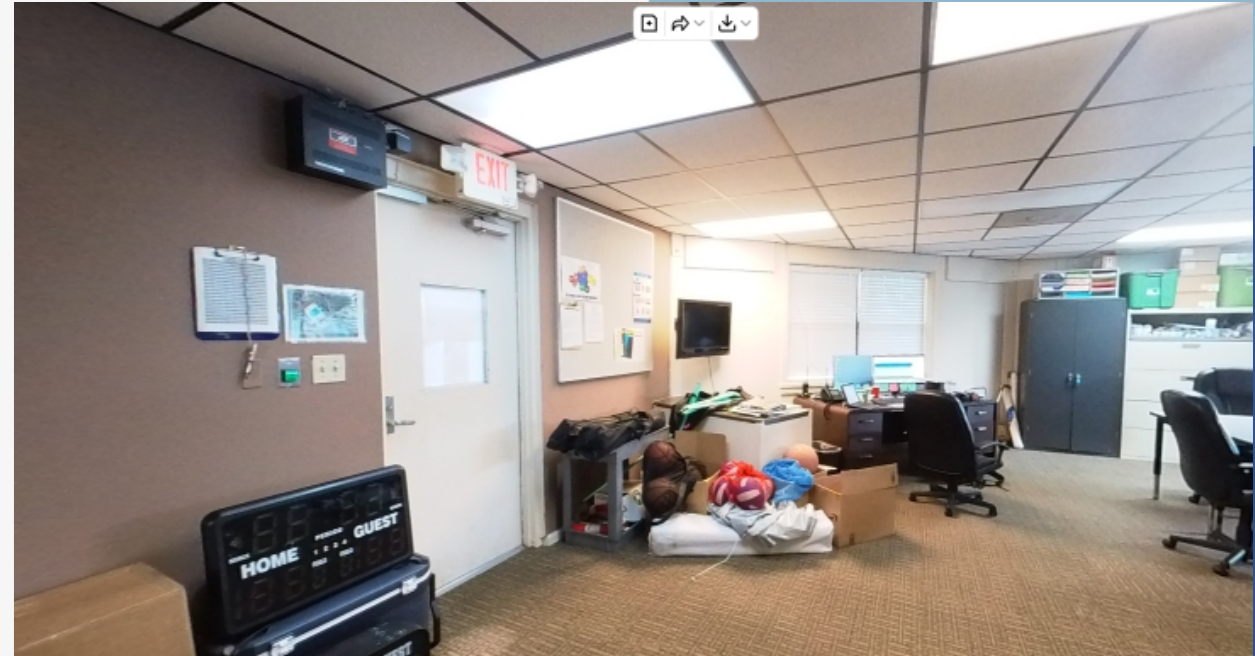




# Belle Terre Park

## Admin Building

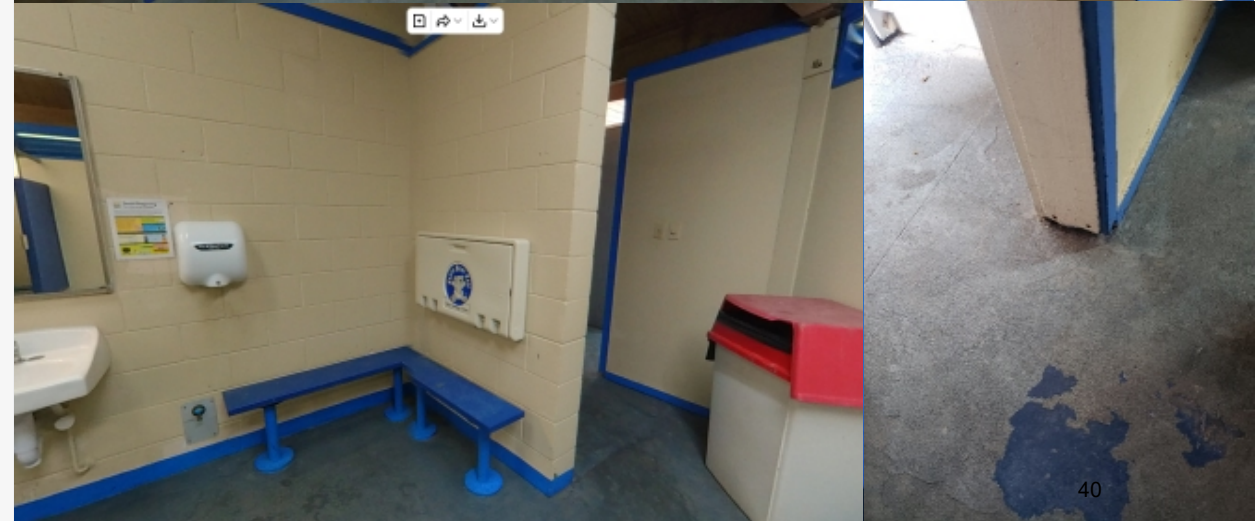
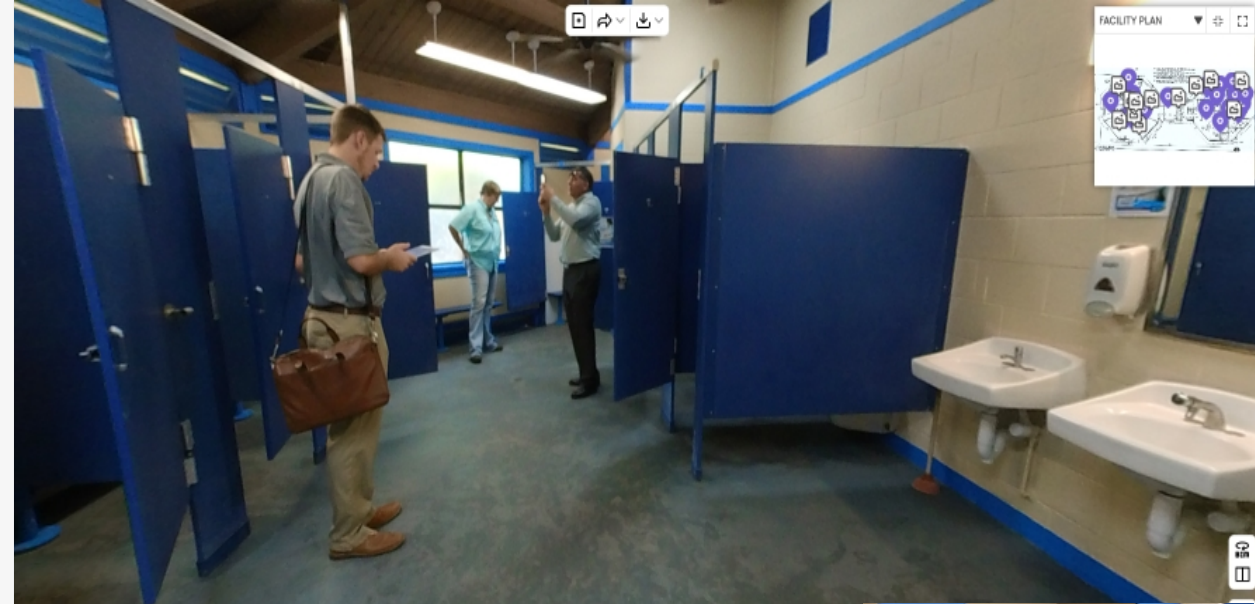
- Current Condition
  - Building shows signs of distress
  - Building in current configuration insufficient to serve staff and guests
  - Fire safety and prevention items are missing
  - Limited air condition provided for staff cool down
- Suitability for continued use
  - Building greatly deficient in condition, size and location; any extensive remodeling is likely to trigger the need for structure upgrade
- Recommendation
  - Building to be demolished and replaced with a new building
- Value
  - None



# Belle Terre Park

## Locker Rooms

- Current Condition
  - Building shows signs of distress; resting beam connections
  - Plumbing fixture and partitions need upgrade
  - Fire safety and prevention items are missing
  - Accessible features are missing
- Suitability for continued use
  - Building greatly deficient
  - Accessibility upgrades are needed
  - Any extensive remodeling is likely to trigger the need for structure upgrade
- Recommendation
  - Building to be demolished and replaced with a new building
- Value
  - None





# Belle Terre Park

## Multi-purpose Room

- Current Condition
  - Building shows signs of distress
  - Exterior toilet is in distress
  - Fire safety and prevention items are missing
  - Accessible features are missing
- Suitability for continued use
  - Building greatly deficient in condition
  - Any extensive remodeling is likely to trigger the need for structure upgrade
- Recommendation
  - Building to be demolished and replaced with a new building
- Value
  - None



# Belle Terre Park

## Pool

- Current Condition
  - Pool is 38 years old and showing sign of aging
  - Pool shell shows cracking in finish
  - Pool coping experience cracking
  - Pool deck is a patchwork of different concrete pours
  - Pool is not suitable for sanctioned lap swimming
  - Pool does not have any features to attract kids
- Suitability for continued use
  - Pool design is dated, not comparable to current design trend and citizens' expectations
- Recommendation
  - Study the viability of aquatics for this neighborhood park
- Value
  - Pool is suitable as a learn-to-swim pool





# Belle Terre Park

## Pool Equipment

- Current Condition
  - Pool equipment recently upgraded and in good condition
  - Pool filter backwash is not connected to storm drainage; floods playground once or twice a week
  - Under pool ground water relieve system not functional
  - Gas tank needs maintenance
- Suitability for continued use
  - Equipment will serve the pool in its current configuration but needs to be replaced if pool size changes
- Recommendation
  - TBD to follow pool recommendation
- Value
  - Could serve current pool for remaining life span (7-10 years)





# Belle Terre Park

## Playground

- Current Condition
  - Long walk from parking area
  - Play structure hidden from view
  - New construction as of 2018 in good condition
  - Area floods once or twice a week due to pool backwash
  - Too far from public toilets
- Suitability for continued use
  - Playground suitable for continued use, except when flooded
  - Could benefit from resolving the flooding issue
  - Could benefit from easier access
- Recommendation
  - Provide drainage route for back wash
- Value
  - Could serve neighborhood for remaining life span





# Belle Terre Park

## Tennis Courts

- Current Condition
  - Courts substrate and surface are greatly deficient
  - Courts fences are deteriorated
  - Courts nets and posts are deteriorated
  - Courts lighting are inefficient and in poor condition
- Suitability for continued use
  - Courts are not usable in current condition
- Recommendation
  - Courts to be demolished and replaced
- Value
  - None



# Belle Terre Park

## Racquetball Courts

- Current Condition
  - Courts substrate and surface are deficient
  - Courts structural walls showing cracks
  - Access to courts is not ideal
- Suitability for continued use
  - Sport experiencing low usage for decades
  - Courts is not usable in current condition
  - Social game with no social space
- Recommendation
  - Courts to be demolished and replaced with amenity with greater use
- Value
  - None





# Belle Terre Park

## Recommendations

- Belle Terre Park facilities needs a total rebuild
- Belle Terre Park more suitable as a neighborhood park
- Conduct city wide site study analysis to determine the best location for a new aquatic center
- Provide a master plan for a new modern aquatic center that meets community needs. On the selected site
- Provide feasibility study/business plan
- Exploring partnering opportunities

