

# VIPER™ AERIALS

Rosenbauer Viper Ladder



# ROSENBAUER VIPER™ AERIAL

## SMART AERIALS™

## THE BEST TECHNOLOGY TO FIGHT FIRES

Rosenbauer's SMART Aerials provide unmatched features that enhance the safety and performance of the Rosenbauer Viper. The SMART Aerial uses CAN-bus and programmable logic control with encoder technology that monitors the aerial's functions 16 times per second. That's unbeatable technology and safety when lives are on the line.



### Aerial Command Seat (ACS)

Comfortably operate and monitor all aerial functions with ease from the aerial command seat. For cooler climates, a heated seat is available.



### Soft-Touch Aerial Controls

Smooth operation is ensured with electric over hydraulic controls. Available on control pedestals and the aerial command seat.



### Command Pedestal

Aerial SMART control system comprised of the soft-touch joystick and SMART screen combination is the standard configuration. Traditional controllers three electric over hydraulic soft-touch levers, are optional.



### Remote Operations

Our wireless remote both transmits and receives information, giving the operator continuous readings on the aerial's extension, retraction, rotation, elevation, aerial load and more. Lit for night-time operation and functional up to 300 feet away, our wireless radio remote is the safest and most intuitive in the industry.



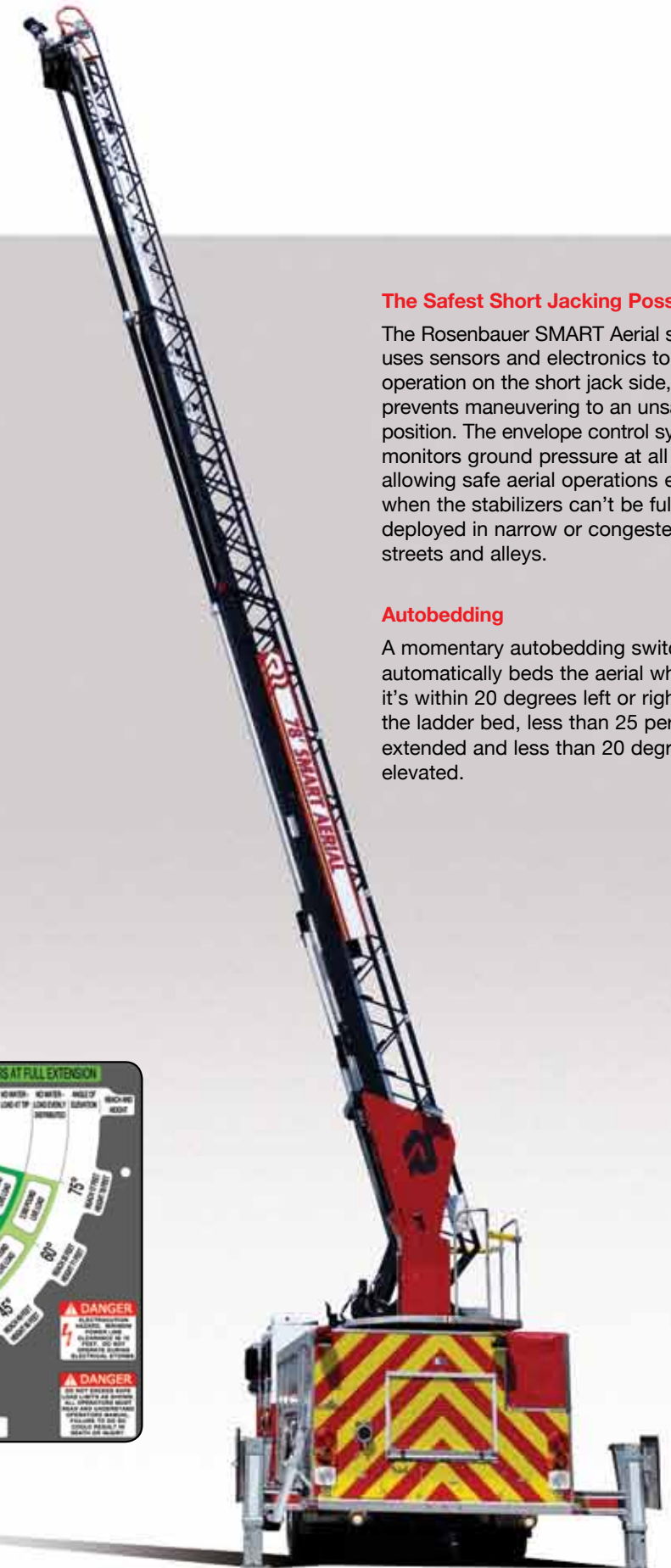
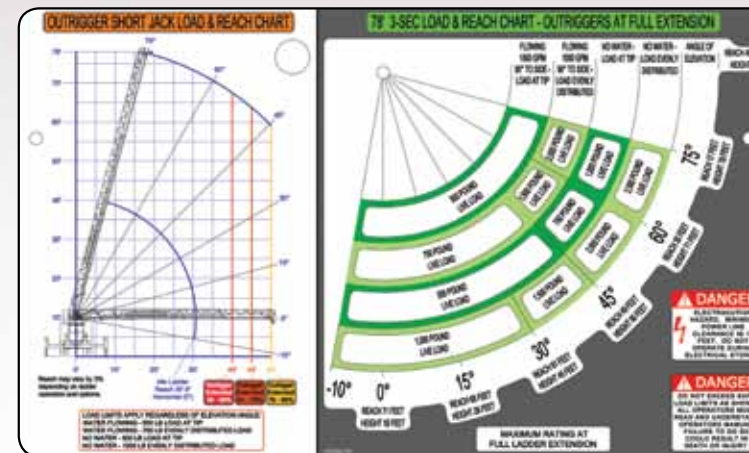
### Collision Control

The Viper's advanced CAN-Bus electronic system not only prevents the aerial from damaging the cab and body but also any additional items protruding off the cab and body, including but not limited to lights, air conditioners and reels.



### Aerial Rescue Mode

Operate in Waterway or Rescue mode with our standard pinnable waterway.



### The Safest Short Jacking Possible

The Rosenbauer SMART Aerial system uses sensors and electronics to allow operation on the short jack side, which prevents maneuvering to an unsafe position. The envelope control system monitors ground pressure at all times, allowing safe aerial operations even when the stabilizers can't be fully deployed in narrow or congested streets and alleys.

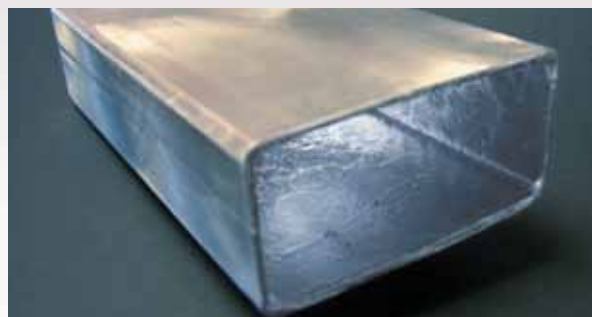
### Autobedding

A momentary autobedding switch automatically beds the aerial when it's within 20 degrees left or right of the ladder bed, less than 25 percent extended and less than 20 degrees elevated.

# ROSENBAUER VIPER™ AERIAL

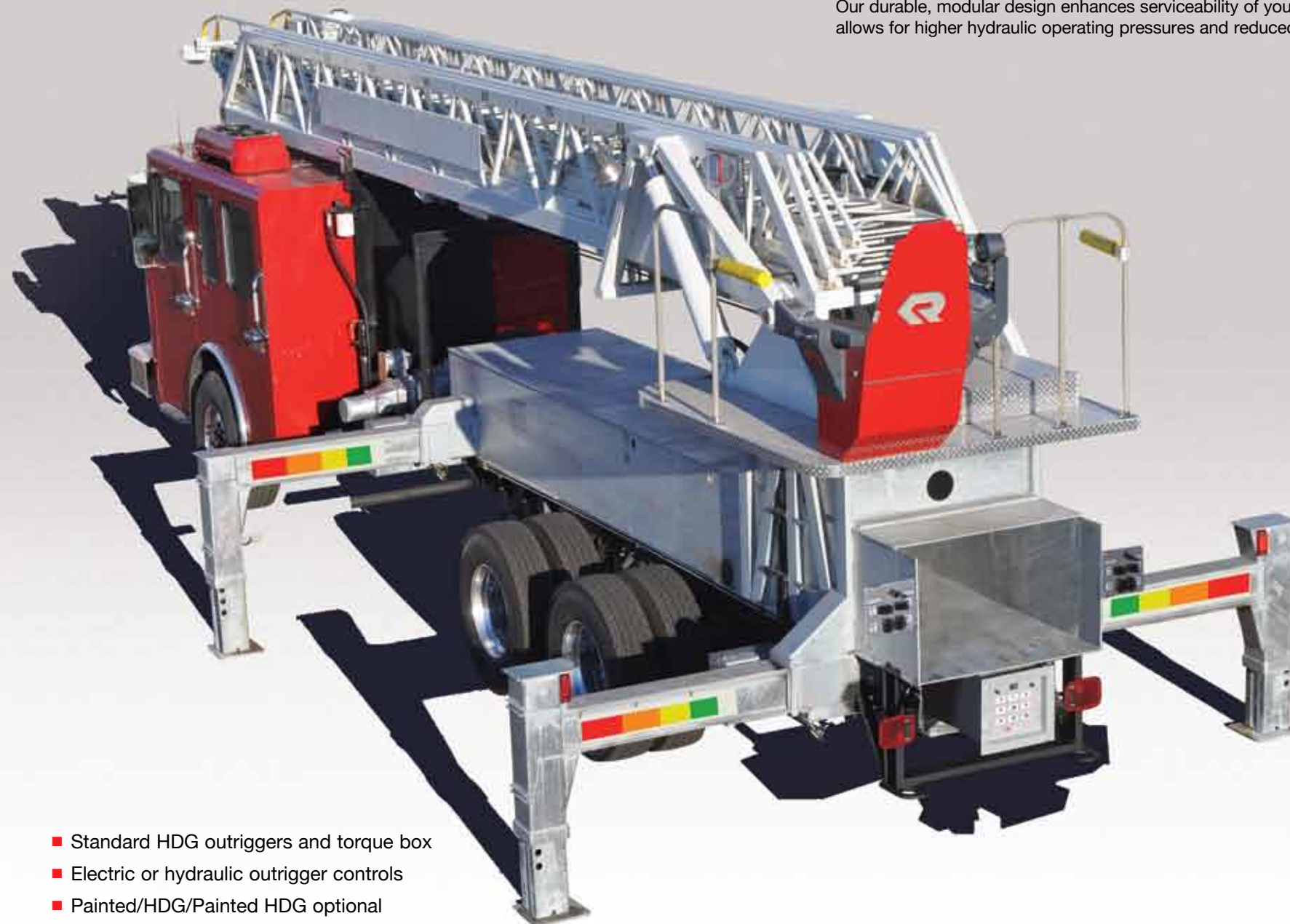
## BUILT TO LAST

As aerials are a major investment, Rosenbauer designs for dependability, longevity and serviceability. From the standard hot-dip galvanized torque tube and outriggers which prevent corrosion in hidden areas, and optimal galvanized ladder sections for the ultimate in corrosion protection, to the three-piece swivel for ease of service, Rosenbauer aerials are engineered and tested to stay in service for many years to come.



### Sturdy Steel Construction

Aerials come in one of two ways: hot-dip galvanized steel or painted steel. Hot-dip galvanized steel gives maximum protection against corrosion, making your aerial virtually maintenance free. We dip the entire aerial section and coat the tubing inside and out. Painted steel aerials have great appearance and strength. Either way, you get great value.



- Standard HDG outriggers and torque box
- Electric or hydraulic outrigger controls
- Painted/HDG/Painted HDG optional



### Three-Piece Swivel

Our durable, modular design enhances serviceability of your aerial. A non-aluminum center hydraulic spool allows for higher hydraulic operating pressures and reduced thermal issues.



### Third-Party Testing

All of our aerials must undergo testing by an independent third-party testing company to ensure you get the safest piece of equipment possible.

# ROSENBAUER VIPER™ AERIAL FEATURES

## FIREFIGHTERS' WEAPON

Giving firefighters the right weapon means making safety a top priority. We've incorporated the latest technology to automate safety systems and simplify operations. You can rely on your Rosenbauer Viper Aerial to make sure everyone goes home.

## VIPER PERFORMANCE

<b>Ladder Reach</b>	• 69'-109' Vertical Reach
<b>Payload Capacity</b>	• 500 lbs. Dry
<b>Wind Rating</b>	• 50 MPH Unrestricted
<b>Ice Rating</b>	• 1/2"
<b>Below Grade Operations</b>	• -10°
<b>Aerial Controls</b>	• Manual Control Stand • Smart Aerial Control Stand • Smart ACS • Smart Aerial Control Stand with Joystick
<b>Stabilizer Spread</b>	• 13'6"-15'6"
<b>Stabilizer</b>	• 2 Rear Out and Down • 2 Front and 2 Rear Out and Down
<b>Apparatus Body</b>	• FX, EXT, CT, FL
<b>Water Tank</b>	• Up to 500 Gallons
<b>Fire Pump</b>	• Flow Rates up to 2000 GPM

### Straight Stick Options

Rosenbauer Viper Aerials are available in the following configurations:

#### Rear-Mount

- 60' 2-Section
- 65' 2-Section
- 65' 3-Section
- 78' 3-Section
- 85' 3-Section
- 100' 4-Section
- 109' 4-Section

#### Mid-Mount

- 100' 5-Section

#### Easy Access

Twin double-acting lift cylinders provide -12 to +75 degrees of aerial operation and easy access for firefighters.



#### Side Stack Hose Bed

Standard hose bed allows for 1,000 feet of rubberized 5-inch intake hose in an easy-to-deploy storage solution.



#### EZ Load Hose Bed

Rosenbauer's exclusive EZ Load Hose Bed simply lowers off the side of apparatus for easy access to the well. The EZ Load Hose bed stores up to 1,500 feet of rubberized 5-inch intake hose.



#### Hose Bed Platform

The platform allows hose loaders easier access to the front of the hose bed without climbing on the aerial device.



#### Rung Lighting at Night

LED rung lighting provides maximum lighting with minimal amp draws.



#### Ladder Storage Options

Your entire NFPA ladder complement in the torque box. Easy to access and easy on the crew.



#### EZ Climb

This exclusive technology makes boarding the firetruck as easy as climbing the stairs, and it's safer for firefighters.





[info@rosenbaueramerica.com](mailto:info@rosenbaueramerica.com)

ROSENBAUER SOUTH DAKOTA, LLC  
100 THIRD STREET  
LYONS, SOUTH DAKOTA 57041  
P: 605.543.5591

ROSENBAUER MINNESOTA, LLC  
5181 260TH STREET  
WYOMING, MINNESOTA 55092  
P: 651.462.1000

ROSENBAUER MOTORS, LLC  
5190 260TH STREET  
WYOMING, MINNESOTA 55092  
P: 651.462.1000

ROSENBAUER AERIALS, LLC  
870 SOUTH BROAD STREET  
FREMONT, NEBRASKA 68025  
P: 402.721.7622