

*A Storybook Life: Interpreting the Princess Place
Lodge
State of Florida Grant & Flagler Tourist Development
Assistance
Update on Progress and Future Endeavors*



September 2010



Celebrating Ten Years of Success 1992 - 2002



From 2002, Florida State University/Highway 90, Historic, 1982

HISTORY

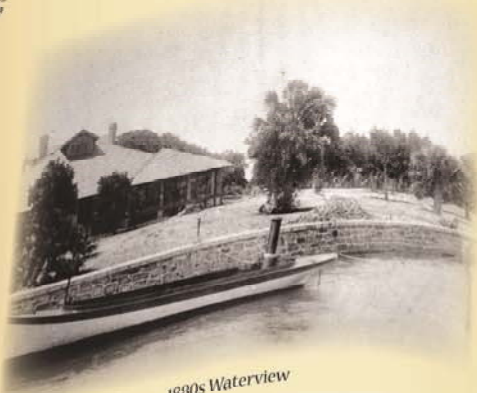
RECREATION

NATURE

memillon '02

FLORIDA COMMUNITIES TRUST

ASSISTING COMMUNITIES TO PRESERVE FLORIDA



1880s Waterview



Entrance road to lodge in 1888. Note the size of the palm trees along the entrance road today.

A Storybook Life:

INTERPRETING THE PRINCESS PLACE LODGE

This project has been financed in part with Historical Museums Grants-in-Aid Program assistance provided by the Bureau of Historical Museums, Division of Historical Resources, Florida Department of State, Secretary of State, as well as the Flagler County Tourist Development Council.



EARLY HISTORY

*L*ong long ago (in 1788 to be exact), Francisco Pellicer obtained a Spanish land grant for 1,105 acres where the preserve stands today. Francisco came to Florida at age 15 from the Island of Minorca as an indentured servant on the Andrew Turnbull Plantation in New Smyrna. He is well known for leading the escape of the Minorcans from Turnbull's plantation to St. Augustine.

After obtaining the land grant, Francisco lived on the land for 33 years. Twelve of his 18 children were born here. Known in the mid 1820s as "Pellicer Plantation", the property was a working farm. Cash crops of sugar cane, corn and cotton were grown.



The Matanzas River



H.C. Sloggett used the land for turpentine production.

In the 1840s, Matanzas and the surrounding area was a wilderness. Economic development was inhibited by geographic isolation, lack of marketable cash crops, and the absence of transportation. Timber and turpentine production were the major economic activities.

In 1886, Henry Cutting, a shipping magnate and prominent New Yorker, purchased the land from H.C. Sloggett and called it "Cherokee Grove". Henry established a major commercial citrus grove, the largest citrus operation in the area.



Angela Mills Cutting circa 1888



Henry Mason Cutting



Angela and her son Heyward



Victrola originally found
in the great room of the lodge



Henry, Angela and friends at the Lodge

CHEROKEE GROVE

Henry Cutting was a sportsman and enjoyed recreation. Hence, he constructed a large Adirondack style hunting lodge complete with a riding stables and a coquina tennis court in 1887 to suit his interests.

While the lodge was under construction, Henry met Angela Mills, a 23 year old from New Jersey. In January 1888, Henry and Angela were married in an impressive ceremony at Grace Church in New York. Following their marriage, the lodge became the center of many social activities for many socially and financially prominent people in the east.

The Cuttings were blessed with two sons, Heyward and Henry M. Cutting. According to his 1892 obituary in the New York Times, Mr. Cutting sadly died in St. Augustine of heart disease. Angela returned with her sons to live in New York, however she did not sell Cherokee Grove and the family continued to visit often. In 1899, tragedy struck again when Angela's youngest son Henry died of diphtheria while in route to Paris.

THE SCHERBATOW YEARS

Angela Cutting remarried a wealthy New York stockbroker, J. Lorimer Worden in 1901. Although Worden greatly increased his wife's fortune, their marriage ended after 19 years in a bitter divorce. With her newfound wealth, Angela traveled throughout Europe and purchased many beautiful items for the Lodge.



Princess Angela Scherbatow



Prince Boris Scherbatow

While in Paris, Angela met Boris Scherbatoff, an exiled Russian prince. Boris was a member of one of the families claiming the throne of Russia after the Bolshevik Revolution. To protect his identity, the prince changed



Princess Angela Scherbatow



Prince Boris Scherbatow

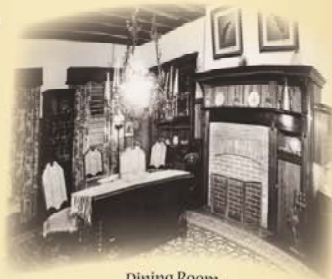
his name to Scherbatow. By marrying Prince Scherbatow in 1923, Angela assumed the royal title of princess, and Cherokee Grove became known as the 'Princess Place'.

Misfortune was in the cards for Princess Angela again, when she experienced the untimely death of her son, Heyward Cutting, in an automobile accident in 1926 and later the death of Prince Scherbatow in 1949.

THE DINING ROOM AND BUTLER'S PANTRY

The Princess traveled the world extensively and frequently brought back treasures that were featured in the lodge. Originally, the Princess furnished the dining room with a large drop leaf table that could seat 12 as well as various cabinets and buffets. The room was lighted by a brass candle chandelier featuring a hunting scene.

Adjacent to the dining room is the butler's pantry. Where the doorway now exists was previously a pass through window from the butler's pantry to the kitchen. Food from the kitchen was passed through the window to the serve staff, who delivered food to the dining area. At the completion of a meal, the items were cleaned and brought to the butler's pantry for storage.



Dining Room



China



Gate Leg Table



China Jar



China Cabinet



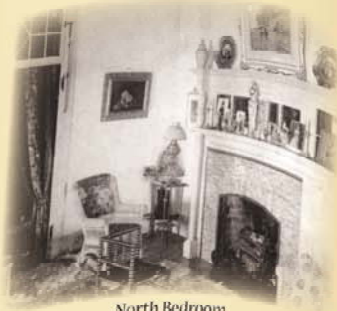
Dining Room Side Board



Brass Service

THE BEDROOMS

The bedrooms were located at each of the four corners to the house. Three of the four bedrooms had an attached suite or sitting area. One of the unique features of the lodge is that there are five closets (2 of which were in the servant's quarters).



North Bedroom



North Bedroom

Homes in the 1800s typically did not have closets because the taxation system at the time was based on the numbers of rooms in a dwelling. Closets were counted as rooms.

Another unique feature to the lodge are the glass transoms over the doorways. The transoms are the glass facilitate the movement of air between the rooms for ventilation. Additionally, the glass reflects light coming from the dormers in the great room to light the exterior rooms.

This bedroom was considered the master bedroom. There are two original pieces in this room - the beveled glass mirror and the decoratively tiled fireplace. Although this was the master bedroom, this was not the Princess' room.



Marble Topped Dresser



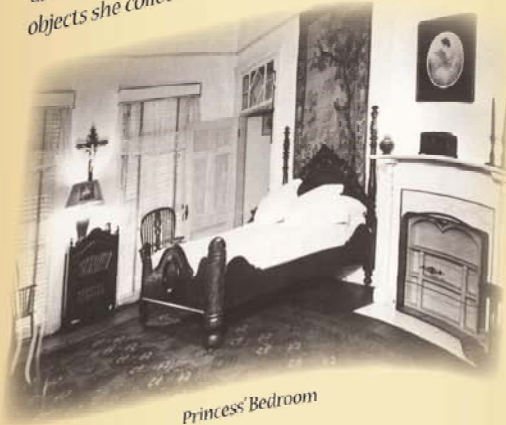
Wash Basin



North Bedroom Painting

THE PRINCESS' BEDROOM AND HYGIENE

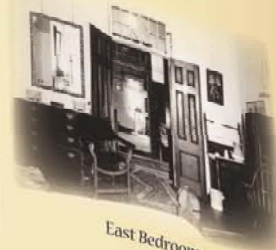
This Princess' bedroom is the only room in the lodge with a southeast exposure, therefore it is the lightest and brightest room. It features a delicate fireplace and a cedar lined closet. In her room, as well as throughout the lodge, the Princess displayed ornate objects she collected during her world travels.



Princess' Bedroom



Wash Area



East Bedroom



East Bedroom

The lodge did not have a bathroom until the 1940s when the Princess made it her permanent residence. Instead the bedrooms were furnished with French pot de chambers, or wash areas, made of fine porcelain china embellished with gold trim and a hand painted design. French bathing basins were also used. The bather would stand in the center of the basin and the servants would pour water over them.

THE GREAT ROOM

The great room was the main room of the lodge. Although it appears to be two stories, the area above the great room was built and used as a storage area. The four wrought iron lights that hang in the room were originally oil fired and have the ability to swing back in forth to meet the lighting needs of the room.



Hand Carved Italian Chest

Mr. Cutting hired several of the same craftsmen his friend Henry Flagler used for the Ponce de Leon Hotel in St. Augustine. A fine example of the craftsmanship includes the hand carved barrel moulding beneath the balcony area. The heart pine wood floors, although refinished, are original to the lodge's construction in 1888.



Japanese Vase

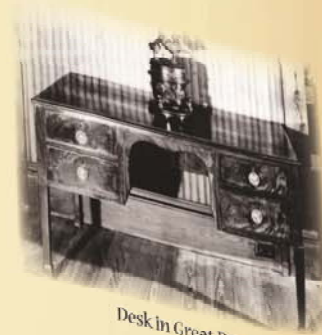


Building Painting



Lady Painting

The fireplace is constructed of natural coquina, which is common to this area of Florida. When coquina is extracted from the ground, it is moist, therefore easy to cut and shape. Coquina becomes very strong and durable when it dries and hardens. The fireplace is adorned with decorative tiles and a cedar roof.



Desk in Great Room









Questions

