



# Major Hurricane Matthew Briefing Situation Overview

A hurricane watch means hurricane conditions ARE POSSIBLE within the warned area within the next 36 to 48 hours.  
Some local precautions need to be taken at this point. Please heed the advice of local officials and emergency management.

...HURRICANE WATCH REMAINS IN EFFECT FOR NORTHEAST FLORIDA COASTAL COUNTIES AND CLAY AND PUTNAM COUNTIES ...

...TROPICAL STORM WATCH REMAINS IN EFFECT FOR MARION, ALACHUA, UNION, BRADFORD AND BAKER COUNTIES...

- Major Hurricane Matthew is still expected to approach DANGEROUSLY CLOSE the Florida First Coast and Southeast Georgia Coast Friday through Friday night into early Saturday morning. Portions of the area are now forecast to be in the western portion of the inner core.
- The range of possible impacts continue be extremely serious, especially for the immediate beaches, and become much more significant if the storm makes landfall in or near our area.
- Destructive, even deadly, coastal storm tide inundation in concert with extremely high, destructive surf is likely to probable with Major Hurricane Matthew.
- Preparations for the potential of a major hurricane passing near or over portions of the northeast Florida and Southeast Georgia coastline should continue. Residents and visitors are reminded once again to maintain a high level of situational awareness for the next few days.

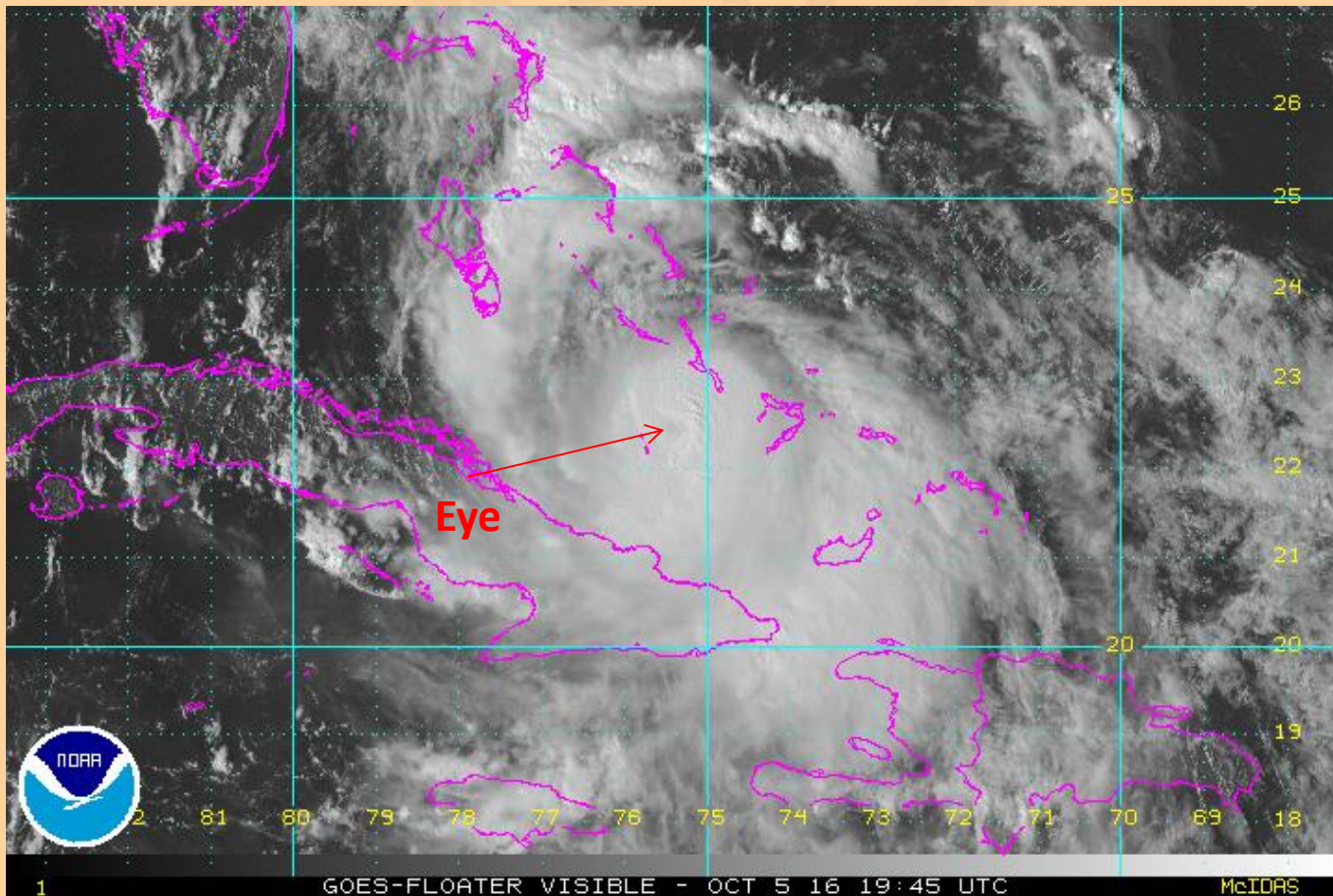
The storm could bring tropical storm and/or hurricane conditions to SOME PORTION of the Watch area. Closely monitor the future progress of the storm. Be careful about rumors, erroneous social media posts and unwarranted speculation.

1



# Visible Imagery

A hurricane watch means hurricane conditions ARE POSSIBLE within the warned area within the next 36 to 48 hours.  
Some local precautions need to be taken at this point. Please heed the advice of local officials and emergency management.



The storm could bring tropical storm and/or hurricane conditions to SOME PORTION of the Watch area. Closely monitor the future progress of the storm. Be careful about rumors, erroneous social media posts and unwarranted speculation.

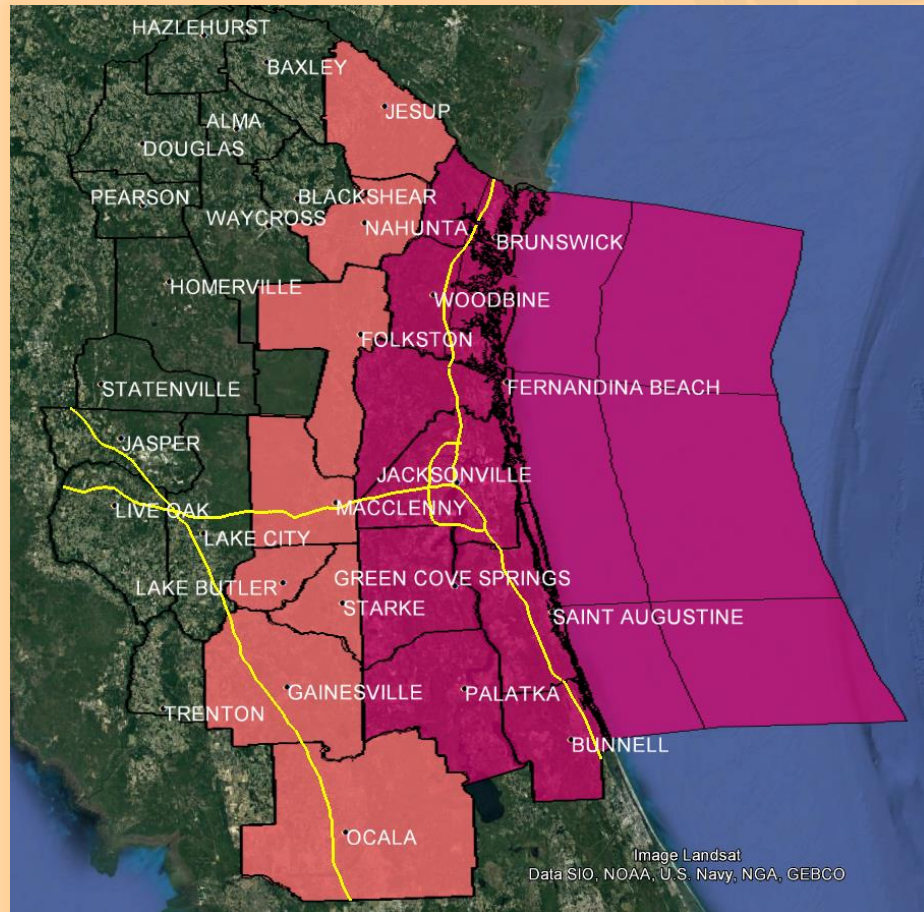


# Hurricane and Tropical Storm Watches

A hurricane watch means hurricane conditions ARE POSSIBLE within the warned area within the next 36 to 48 hours.  
Some local precautions need to be taken at this point. Please heed the advice of local officials and emergency management.

 Hurricane Watch

 Tropical Storm Watch



By late Friday afternoon, Hurricane Matthew is anticipated to be just offshore of Palm Coast, FL. over our offshore waters between 40 and 60 nautical miles offshore of Palm Coast, forecasted winds are near 110 mph with gusts to 135 mph.

If the track shifts west, hugging closer to the coast, these types of winds can realized closer to the nearshore waters and near the immediate coast. . Any, repeat ANY westward deviation could bring the eyewall of the hurricane over a portion of our coast.

It is important to remain alert to the most recent information over the next couple days.

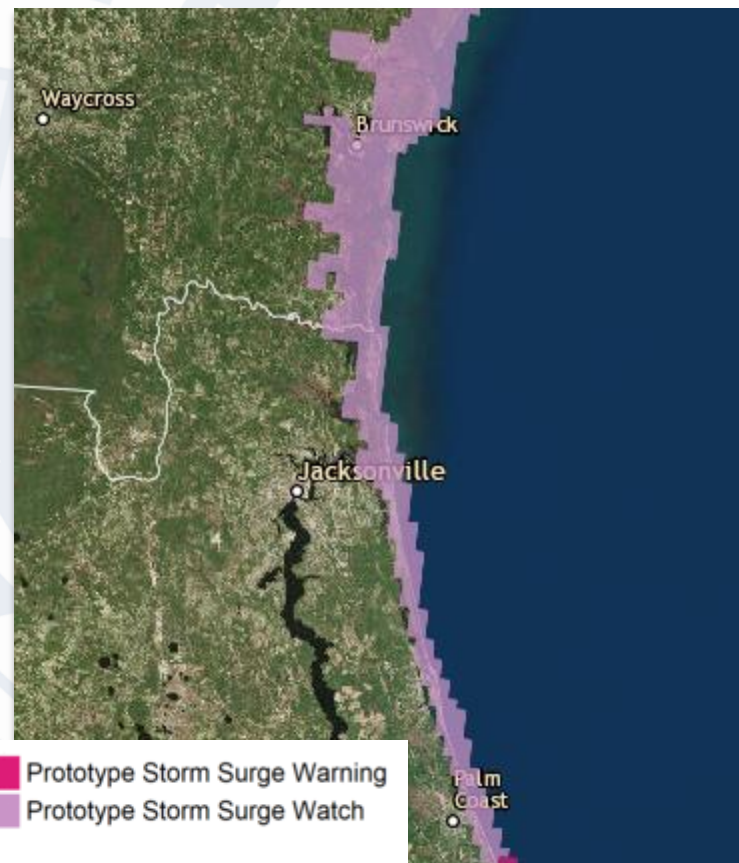
The storm could bring tropical storm and/or hurricane conditions to SOME PORTION of the Watch area. Closely monitor the future progress of the storm. Be careful about rumors, erroneous social media posts and unwarranted speculation.



# Storm Surge Watch Area

A hurricane watch means hurricane conditions ARE POSSIBLE within the warned area within the next 36 to 48 hours.  
Some local precautions need to be taken at this point. Please heed the advice of local officials and emergency management.

Life threaten inundation is POSSIBLE from rising water and wave action moving inland from the shoreline somewhere within the specified area and generally within 48 hours.



The storm could bring tropical storm and/or hurricane conditions to SOME PORTION of the Watch area. Closely monitor the future progress of the storm. Be careful about rumors, erroneous social media posts and unwarranted speculation.



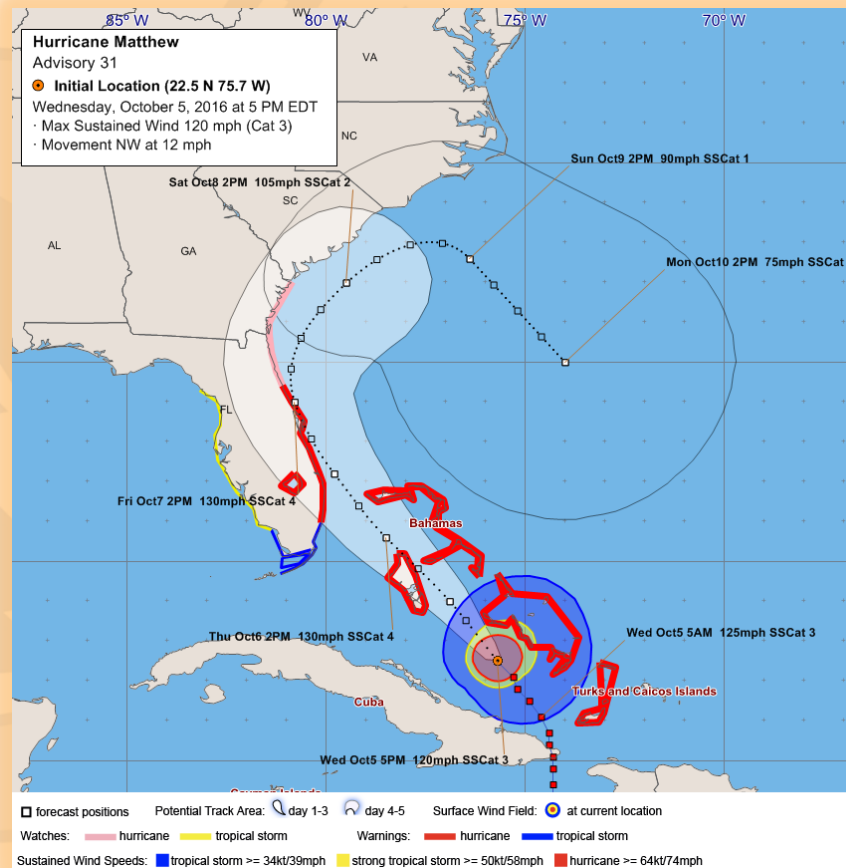
# Five Day Cone of Uncertainty

A hurricane watch means hurricane conditions ARE POSSIBLE within the warned area within the next 36 to 48 hours. Some local precautions need to be taken at this point. Please heed the advice of local officials and emergency management.

Based on the latest NHC forecast:

- Matthew's closest approach to northeast Florida and southeast Georgia will likely be Friday and Friday night.
- Matthew will bring significant marine and coastal concerns to Northeast Florida and Southeast Georgia.
- *Based on our normal track error the storm could track onshore PLEASE HEED the advice of Emergency Officials*

NOTE: The forecast cone (shaded white area and hatched area in the graphic) is where the center of the storm is expected to track 2/3 of the time.

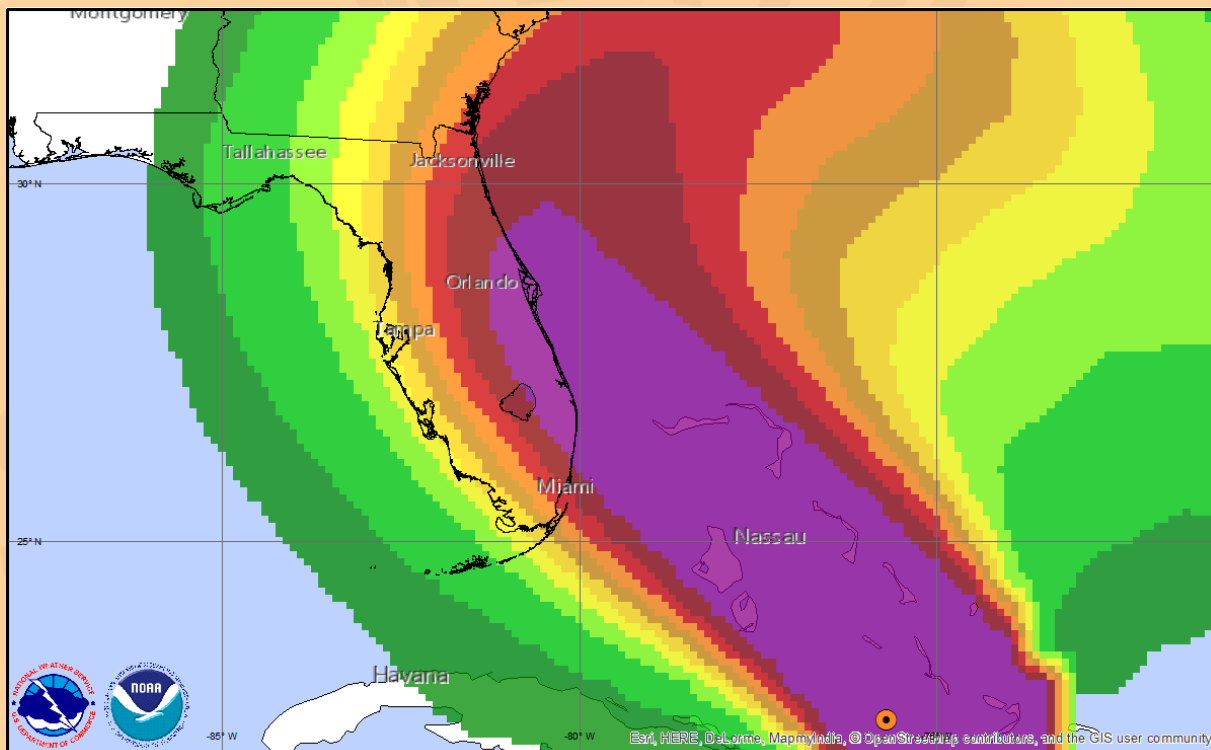


The storm could bring tropical storm and/or hurricane conditions to SOME PORTION of the Watch area. Closely monitor the future progress of the storm. Be careful about rumors, erroneous social media posts and unwarranted speculation.



# Tropical Storm Force Wind Speed Probabilities

A hurricane watch means hurricane conditions ARE POSSIBLE within the warned area within the next 36 to 48 hours.  
Some local precautions need to be taken at this point. Please heed the advice of local officials and emergency management.



## Major Hurricane MATTHEW

Advisory 31  
Wednesday October 05, 2016  
05 PM ET

NWS National Hurricane Center **Advisory Position:** ●

## Tropical Storm Force Wind Probabilities

Valid for 5 days ending 02 PM ET Mon Oct 10  
Cumulative Probability > 39 mph Sustained Winds



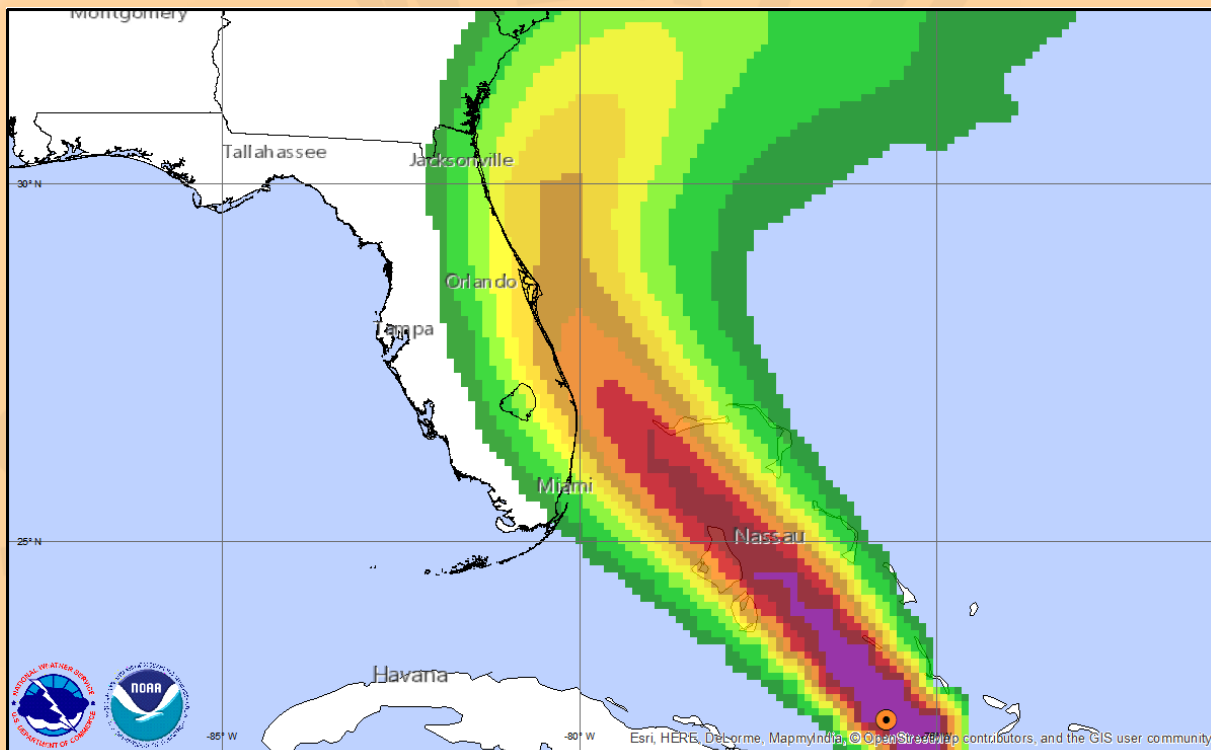
The storm could bring tropical storm and/or hurricane conditions to SOME PORTION of the Watch area. Closely monitor the future progress of the storm. Be careful about rumors, erroneous social media posts and unwarranted speculation.



# Hurricane Force Wind Probabilities

These value are increasing, they are indicating a chance of a high impact event.

A hurricane watch means hurricane conditions ARE POSSIBLE within the warned area within the next 36 to 48 hours.  
Some local precautions need to be taken at this point. Please heed the advice of local officials and emergency management.



## Major Hurricane MATTHEW

Advisory 31  
Wednesday October 05, 2016  
05 PM ET

NWS National Hurricane Center **Advisory Position:** ●

## Hurricane Force Wind Probabilities

Valid for 5 days ending 02 PM ET Mon Oct 10  
Cumulative Probability > 74 mph Sustained Winds



The storm could bring tropical storm and/or hurricane conditions to SOME PORTION of the Watch area. Closely monitor the future progress of the storm. Be careful about rumors, erroneous social media posts and unwarranted speculation.



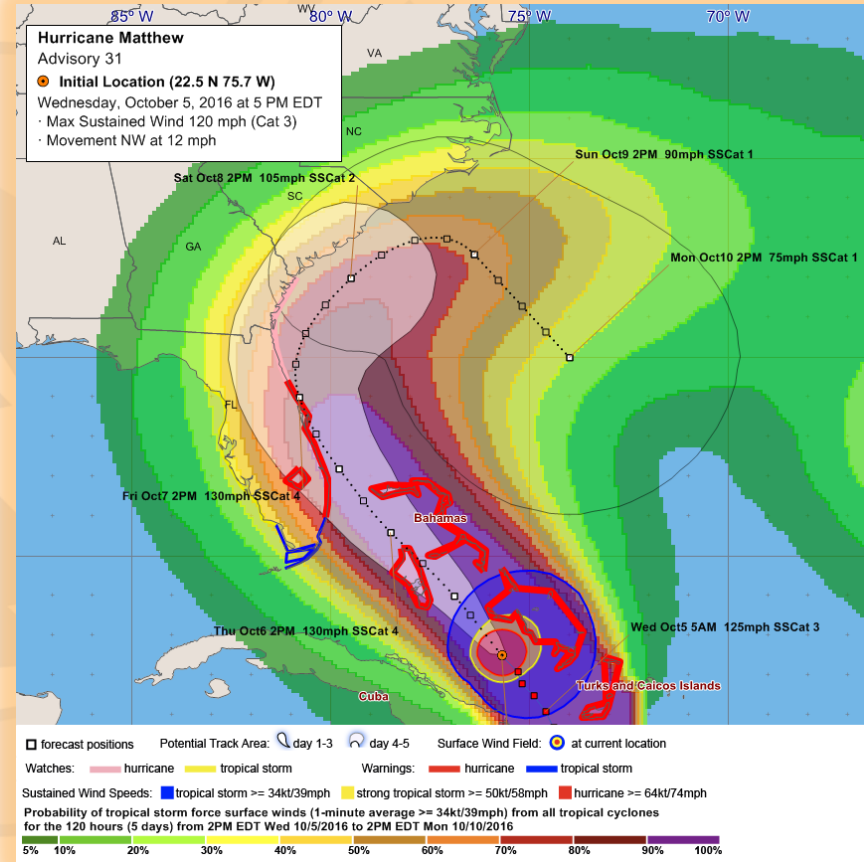
# Five Day Cone of Uncertainty And Area of Potential Impacts

A hurricane watch means hurricane conditions ARE POSSIBLE within the warned area within the next 36 to 48 hours.  
Some local precautions need to be taken at this point. Please heed the advice of local officials and emergency management.

Based on the latest NHC forecast:

- Matthew's closest approach to northeast Florida and southeast Georgia will likely be Friday into late Friday night.
- Matthew will bring significant marine and coastal concerns to Northeast Florida and Southeast Georgia.
- *Based on our normal track error the storm could track onshore HEED the advice of Emergency Officials*

NOTE: The forecast cone (shaded white area and hatched area in the graphic) is where the center of the storm is expected to track 2/3 of the time.



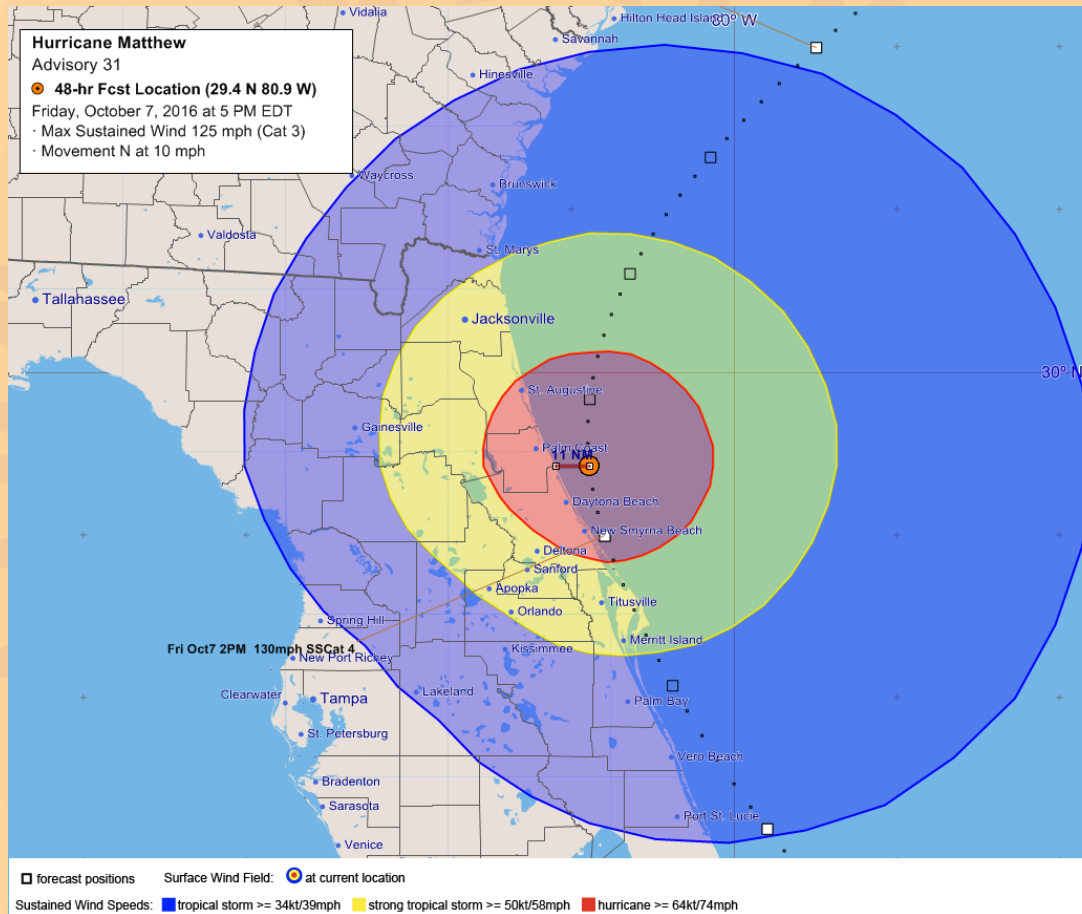
The storm could bring tropical storm and/or hurricane conditions to SOME PORTION of the Watch area. Closely monitor the future progress of the storm. Be careful about rumors, erroneous social media posts and unwarranted speculation.





# Closest Point of Approach Flagler, 125 mph, 0 to 20 nm

A hurricane watch means hurricane conditions ARE POSSIBLE within the warned area within the next 36 to 48 hours.  
Some local precautions need to be taken at this point. Please heed the advice of local officials and emergency management.

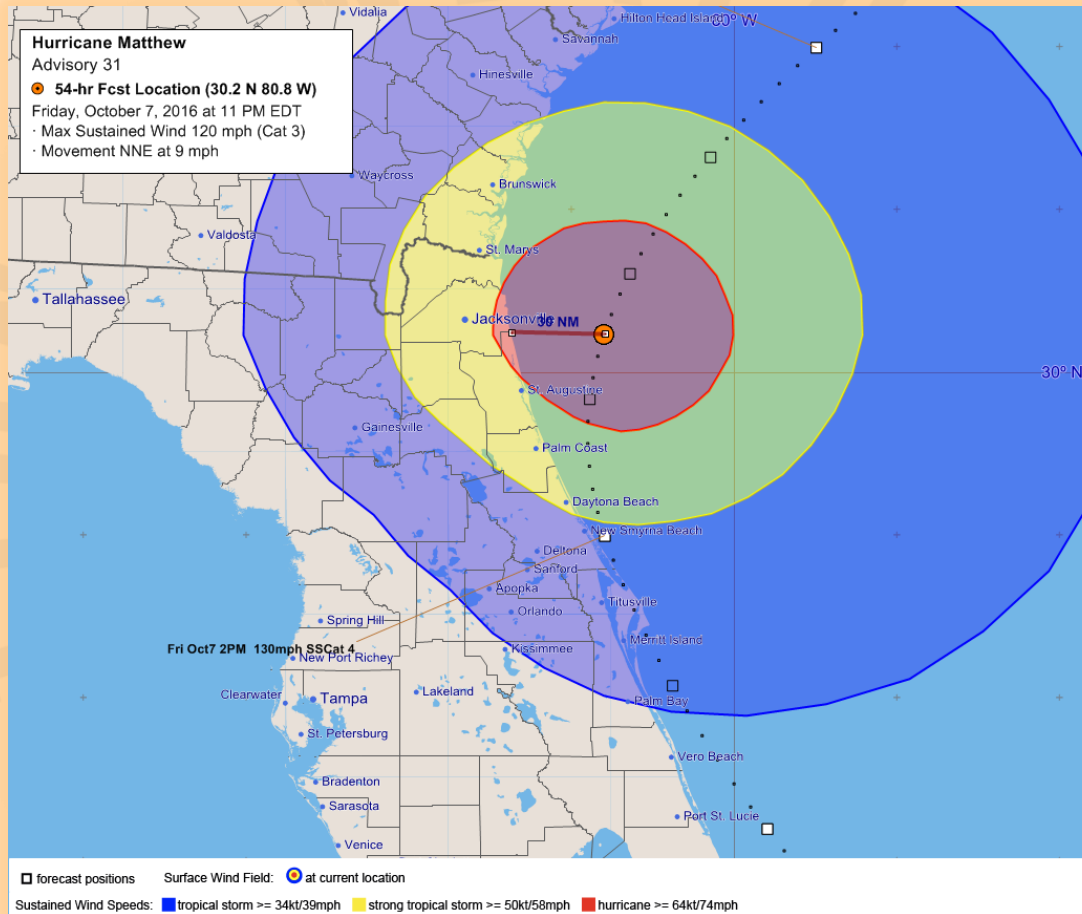


The storm could bring tropical storm and/or hurricane conditions to SOME PORTION of the Watch area. Closely monitor the future progress of the storm. Be careful about rumors, erroneous social media posts and unwarranted speculation.



# Closest Point of Approach Duval, 120 mph, 20 to 40 nm

A hurricane watch means hurricane conditions ARE POSSIBLE within the warned area within the next 36 to 48 hours.  
Some local precautions need to be taken at this point. Please heed the advice of local officials and emergency management.

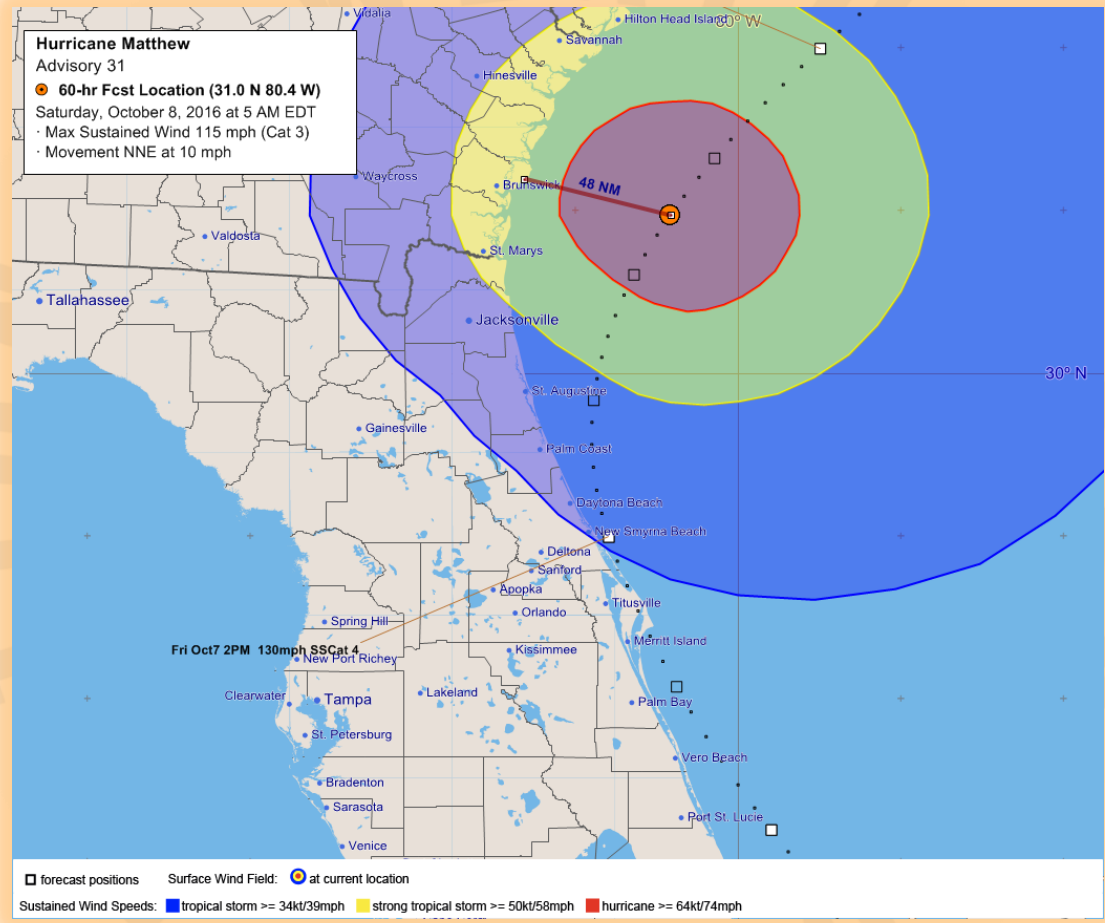


The storm could bring tropical storm and/or hurricane conditions to SOME PORTION of the Watch area. Closely monitor the future progress of the storm. Be careful about rumors, erroneous social media posts and unwarranted speculation.



# Closest Point of Approach Glynn, 115 mph, 40 to 60 nm

A hurricane watch means hurricane conditions ARE POSSIBLE within the warned area within the next 36 to 48 hours.  
Some local precautions need to be taken at this point. Please heed the advice of local officials and emergency management.

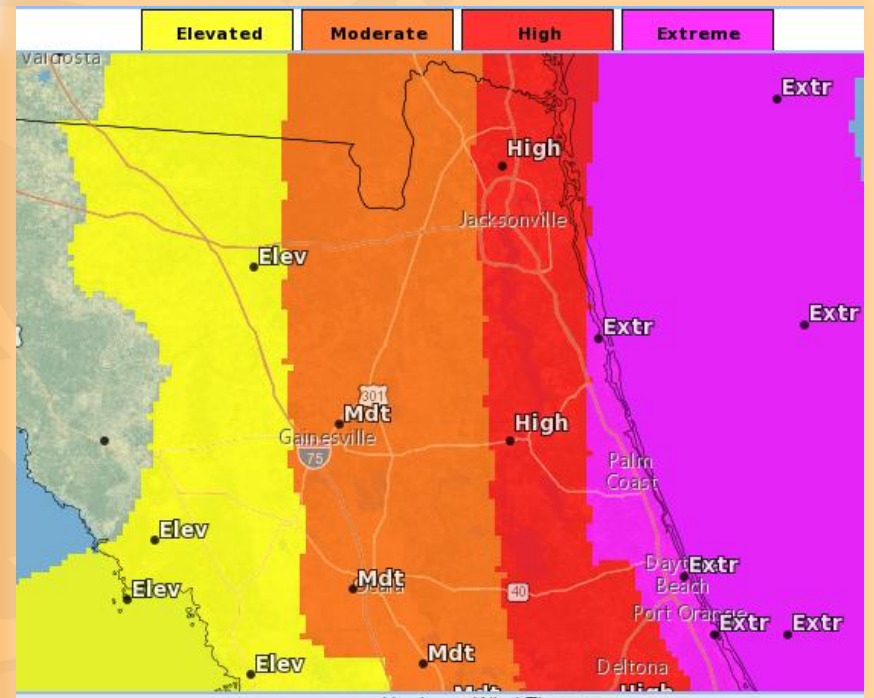
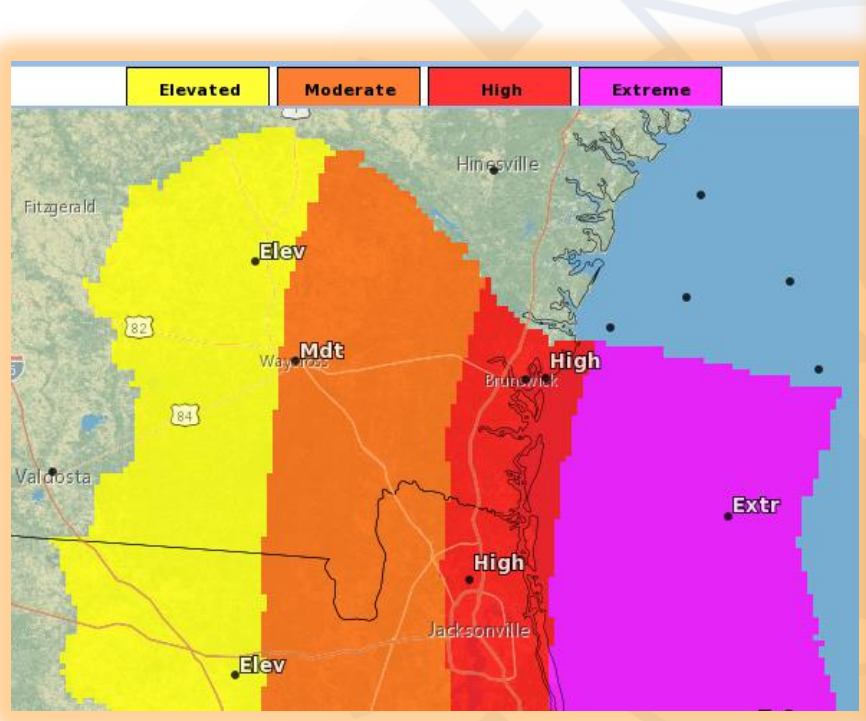


The storm could bring tropical storm and/or hurricane conditions to SOME PORTION of the Watch area. Closely monitor the future progress of the storm. Be careful about rumors, erroneous social media posts and unwarranted speculation.



# Wind Threat

A hurricane watch means hurricane conditions ARE POSSIBLE within the warned area within the next 36 to 48 hours.  
Some local precautions need to be taken at this point. Please heed the advice of local officials and emergency management.



Hurricane Wind Threat  
Through: Fri, Oct 7 2016, 8 PM EDT  
Issued: Oct 05 at 5 PM EDT

The storm could bring tropical storm and/or hurricane conditions to SOME PORTION of the Watch area. Closely monitor the future progress of the storm. Be careful about rumors, erroneous social media posts and unwarranted speculation.



# Local Impacts

## Very High Confidence of Significant Coastal Impacts Late This Week

A hurricane watch means hurricane conditions ARE POSSIBLE within the warned area within the next 36 to 48 hours.  
Some local precautions need to be taken at this point. Please heed the advice of local officials and emergency management.

### Expected Coastal Impacts:

- **Life Threatening Storm Surge of 3 to 5 feet Above Ground Level is possible with large wave action on top of it.**
- **Large, Destructive surf possibly 20 to 25 foot breakers.**
- Damaging beach erosion.
- Based on the latest forecast, tropical force storm conditions could impact the adjacent NE FL Atlantic waters late Thursday night, and then NE Florida Friday morning and SE GA starting Friday afternoon into Saturday morning. **Hurricane conditions are possible** Friday afternoon and evening.

### Marine Impacts:

- Building seas and increasing winds beginning today (not totally due to the hurricane).
- Tropical Storm Conditions possible Thursday evening with possible Hurricane Conditions Friday through Saturday.

### Potential Local Impacts if the track shifts farther west (left) of current track:

- Coastal flooding and heavy rainfall.
- Damaging winds.



The storm could bring tropical storm and/or hurricane conditions to SOME PORTION of the Watch area. Closely monitor the future progress of the storm. Be careful about rumors, erroneous social media posts and unwarranted speculation.

13



# Storm Surge Graphics Things To Think About...

A hurricane watch means hurricane conditions ARE POSSIBLE within the warned area within the next 36 to 48 hours.  
Some local precautions need to be taken at this point. Please heed the advice of local officials and emergency management.

- Remember Storm Surge graphics depict STILL water heights, as though you were in your swimming pool (think neck deep in the pool).
- Unlike your pool a hurricane has large wave action on top of the surge and when those waves impact the beaches and dunes that water “runs up” or put another way it moves inland a considerable distance.
- So we are looking at water 3 to 5 feet deep with large waves on it and the model isn’t showing that!
- Imagine a six foot person with water up to their neck (5 feet deep) being hit by 20 to 25 foot breakers!

The storm could bring tropical storm and/or hurricane conditions to SOME PORTION of the Watch area. Closely monitor the future progress of the storm. Be careful about rumors, erroneous social media posts and unwarranted speculation.

14

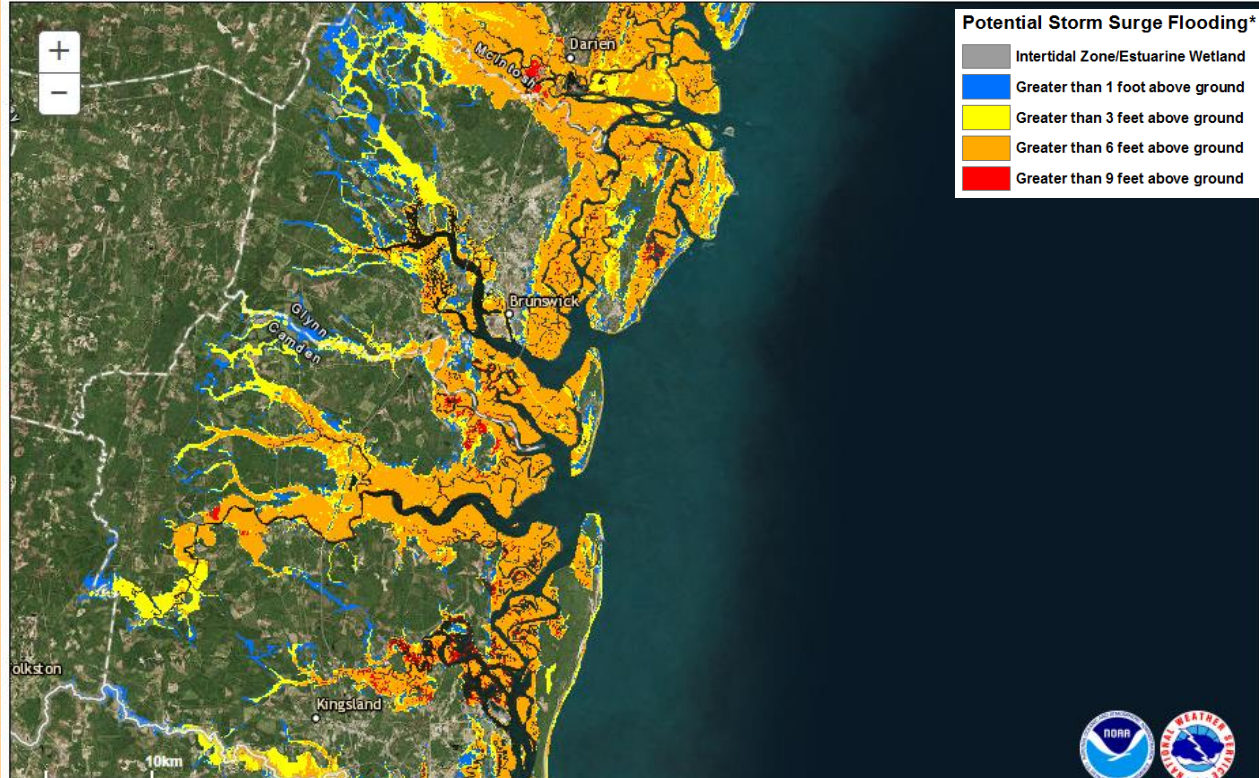


# NHC "Reasonable Worst Case" Inundation

A hurricane watch means hurricane conditions ARE POSSIBLE within the warned area within the next 36 to 48 hours.

Some local precautions need to be taken at this point. Please heed the advice of local officials and emergency management.

NHC Potential Storm Surge Flooding Map  
Hurricane MATTHEW (2016) Advisory 30  
From 11 AM EDT Wednesday October 05 to 05 PM EDT Saturday October 08



\*Displayed flooding values indicate the water height that has about a 1-in-10 (10%) chance of being exceeded.

The storm could bring tropical storm and/or hurricane conditions to SOME PORTION of the Watch area. Closely monitor the future progress of the storm. Be careful about rumors, erroneous social media posts and unwarranted speculation.

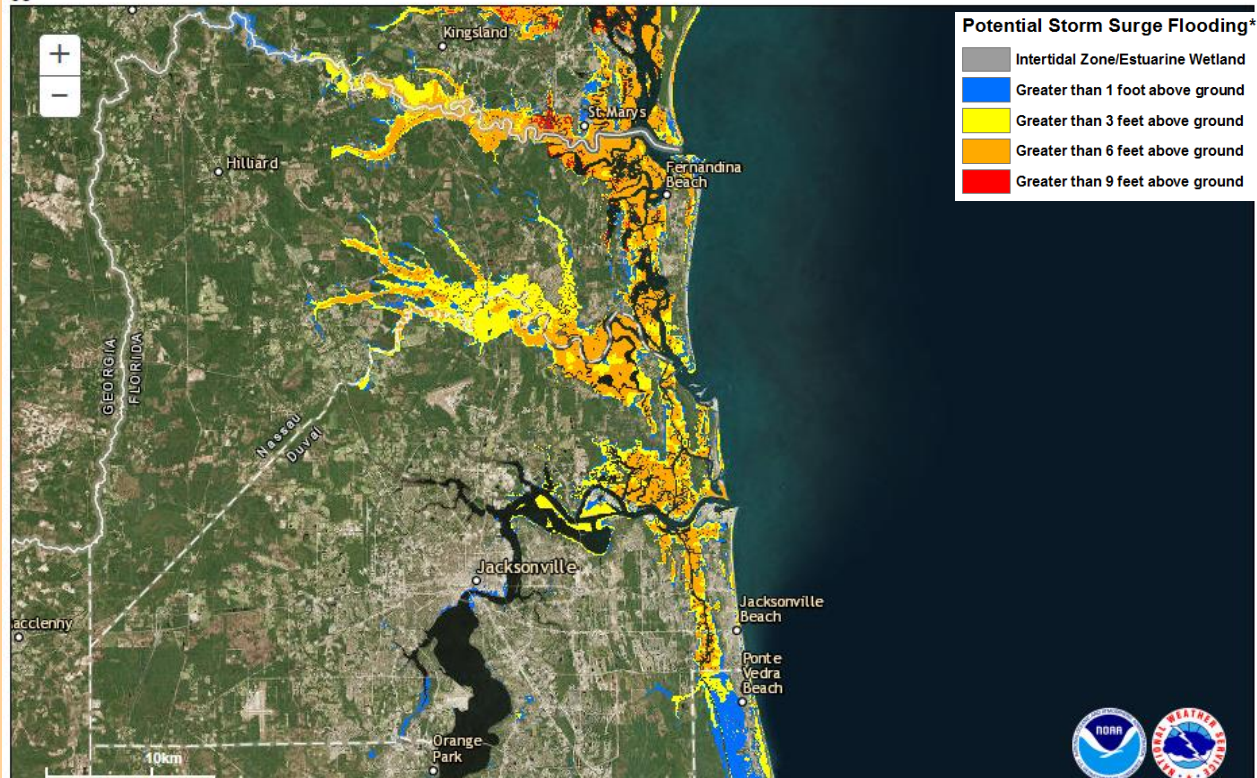


# NHC "Reasonable Worst Case" Inundation

A hurricane watch means hurricane conditions ARE POSSIBLE within the warned area within the next 36 to 48 hours.

Some local precautions need to be taken at this point. Please heed the advice of local officials and emergency management.

NHC Potential Storm Surge Flooding Map  
Hurricane MATTHEW (2016) Advisory 30  
From 11 AM EDT Wednesday October 05 to 05 PM EDT Saturday October 08



\*Displayed flooding values indicate the water height that has about a 1-in-10 (10%) chance of being exceeded.

The storm could bring tropical storm and/or hurricane conditions to SOME PORTION of the Watch area. Closely monitor the future progress of the storm. Be careful about rumors, erroneous social media posts and unwarranted speculation.

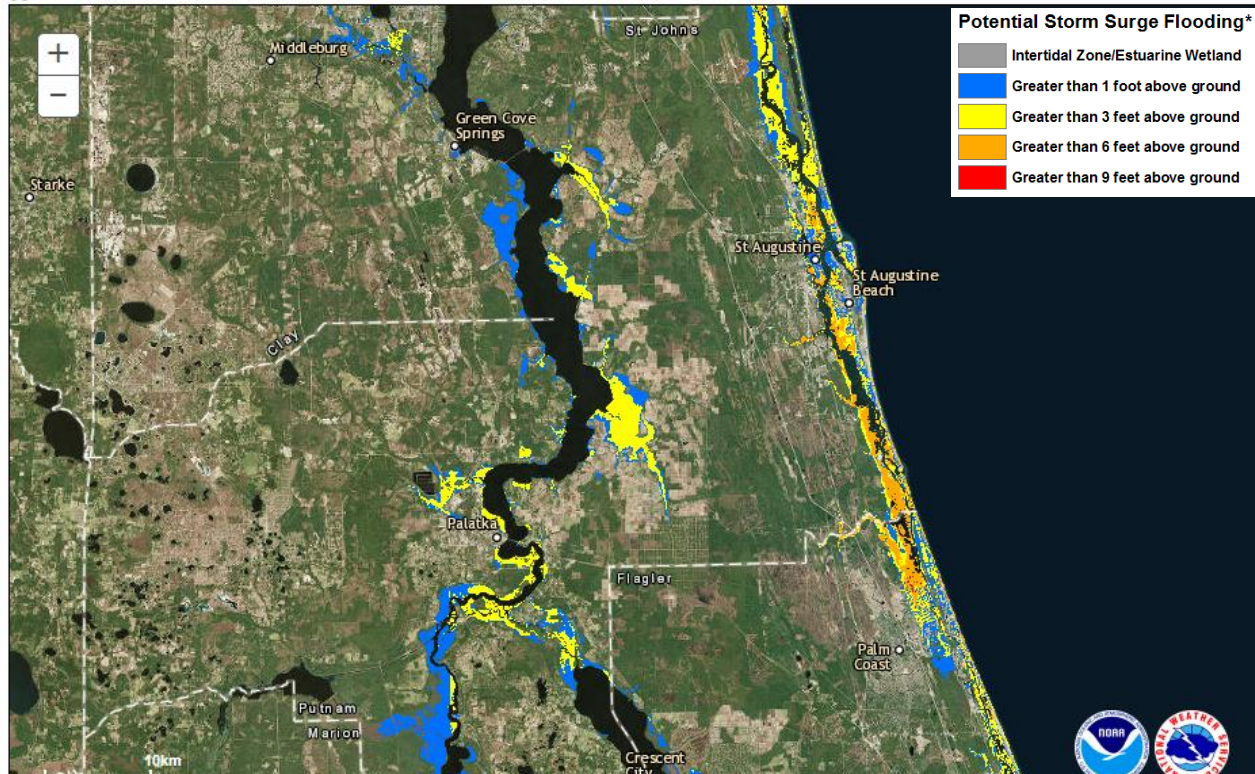




# NHC "Reasonable Worst Case" Inundation

A hurricane watch means hurricane conditions ARE POSSIBLE within the warned area within the next 36 to 48 hours.  
Some local precautions need to be taken at this point. Please heed the advice of local officials and emergency management.

NHC Potential Storm Surge Flooding Map  
Hurricane MATTHEW (2016) Advisory 30  
From 11 AM EDT Wednesday October 05 to 05 PM EDT Saturday October 08



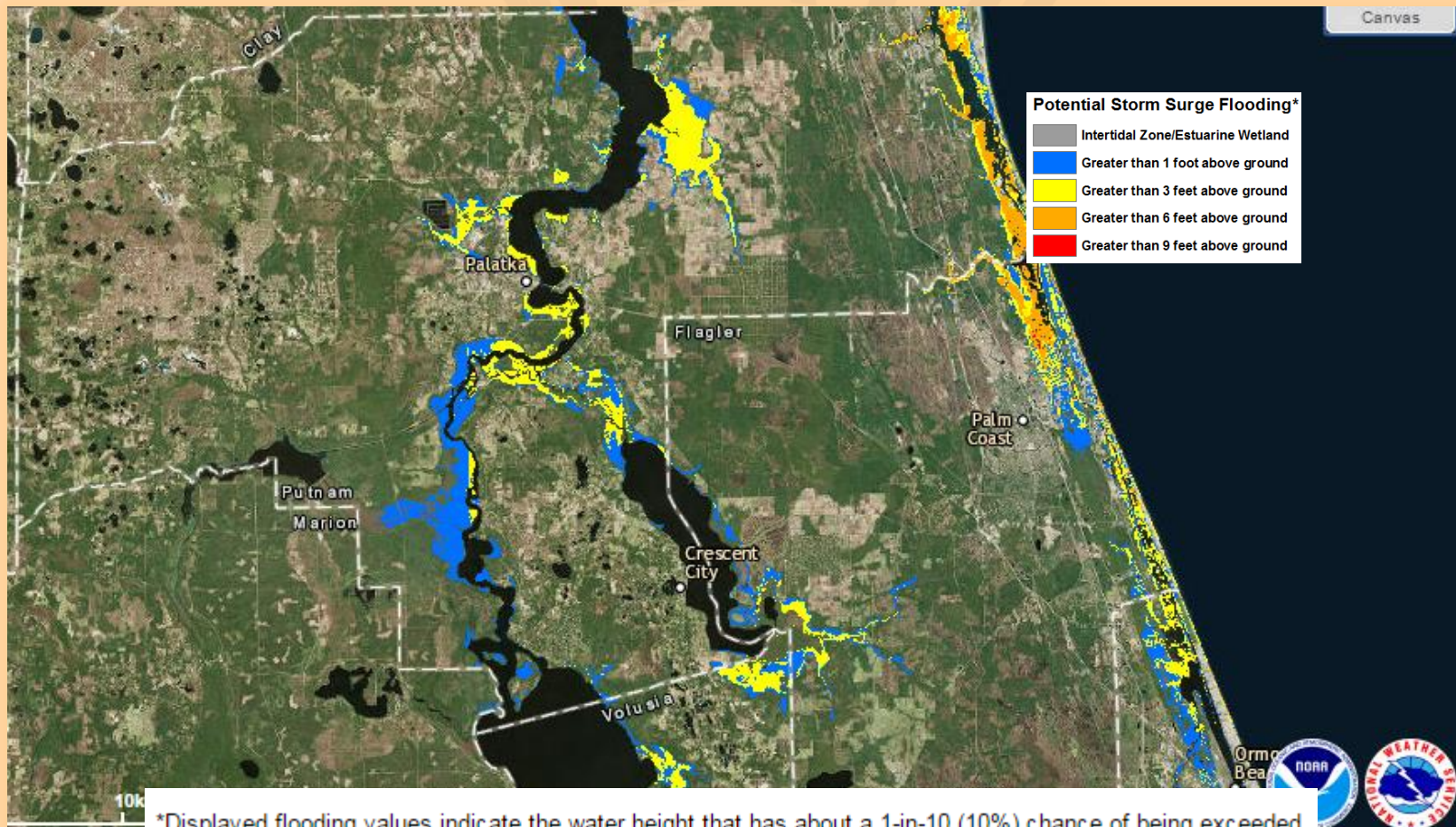
\*Displayed flooding values indicate the water height that has about a 1-in-10 (10%) chance of being exceeded.

The storm could bring tropical storm and/or hurricane conditions to SOME PORTION of the Watch area. Closely monitor the future progress of the storm. Be careful about rumors, erroneous social media posts and unwarranted speculation.



# NHC "Reasonable Worst Case" Inundation

A hurricane watch means hurricane conditions ARE POSSIBLE within the warned area within the next 36 to 48 hours.  
Some local precautions need to be taken at this point. Please heed the advice of local officials and emergency management.

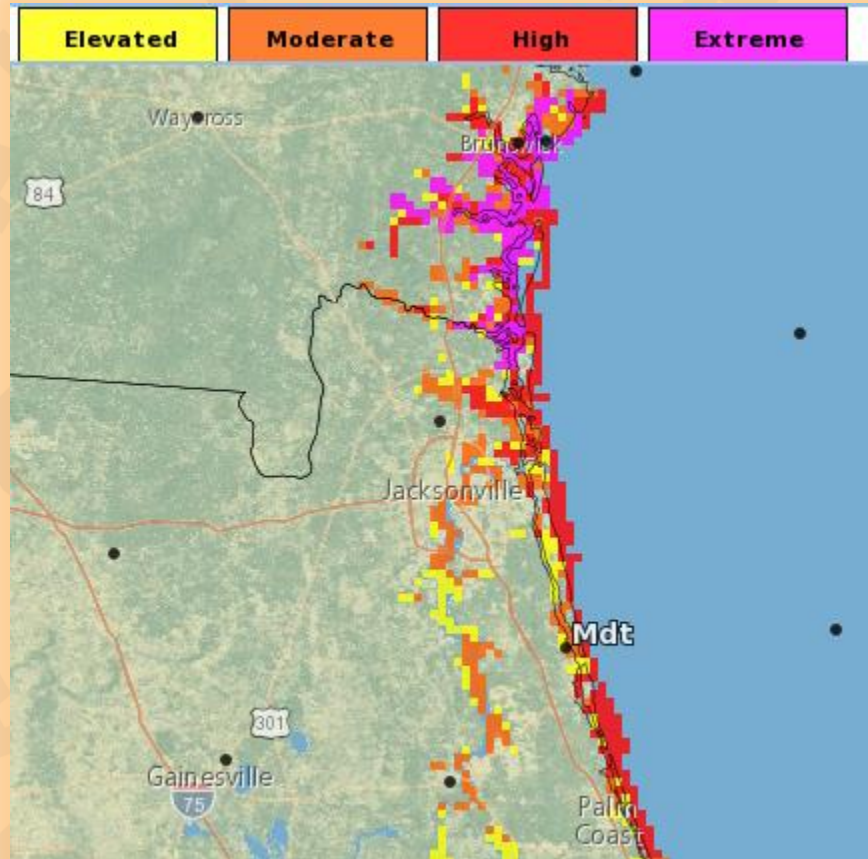


The storm could bring tropical storm and/or hurricane conditions to SOME PORTION of the Watch area. Closely monitor the future progress of the storm. Be careful about rumors, erroneous social media posts and unwarranted speculation.



# Storm Tide Hazards Graphic

A hurricane watch means hurricane conditions ARE POSSIBLE within the warned area within the next 36 to 48 hours.  
Some local precautions need to be taken at this point. Please heed the advice of local officials and emergency management.



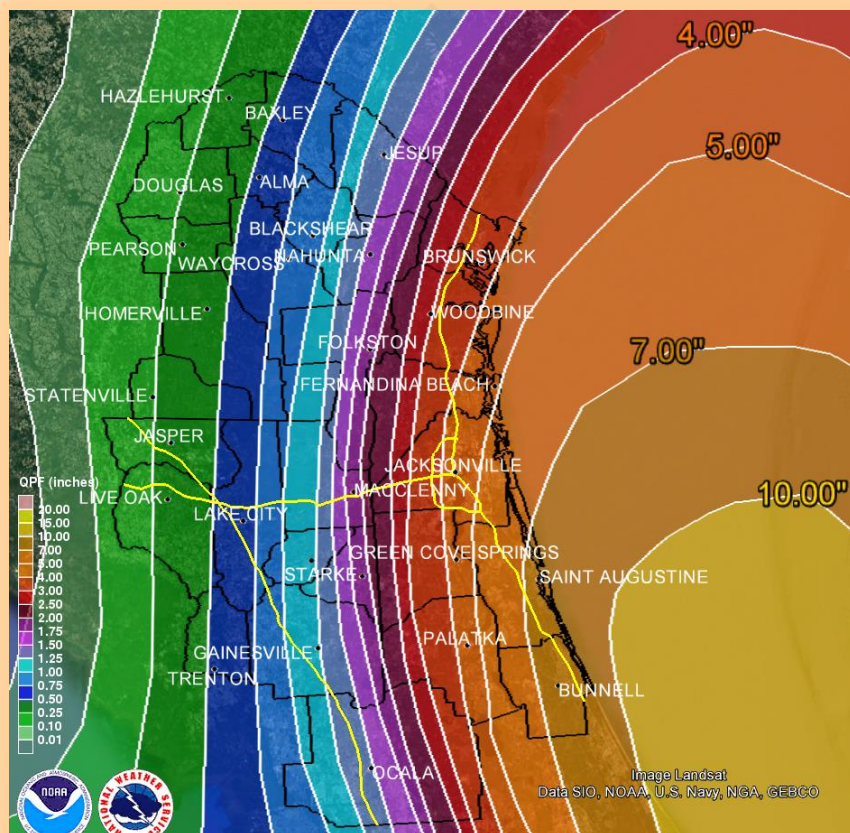
The storm could bring tropical storm and/or hurricane conditions to SOME PORTION of the Watch area. Closely monitor the future progress of the storm. Be careful about rumors, erroneous social media posts and unwarranted speculation.



# Heavy Coastal Rainfall Likely

A hurricane watch means hurricane conditions ARE POSSIBLE within the warned area within the next 36 to 48 hours.

Some local precautions need to be taken at this point. Please heed the advice of local officials and emergency management.



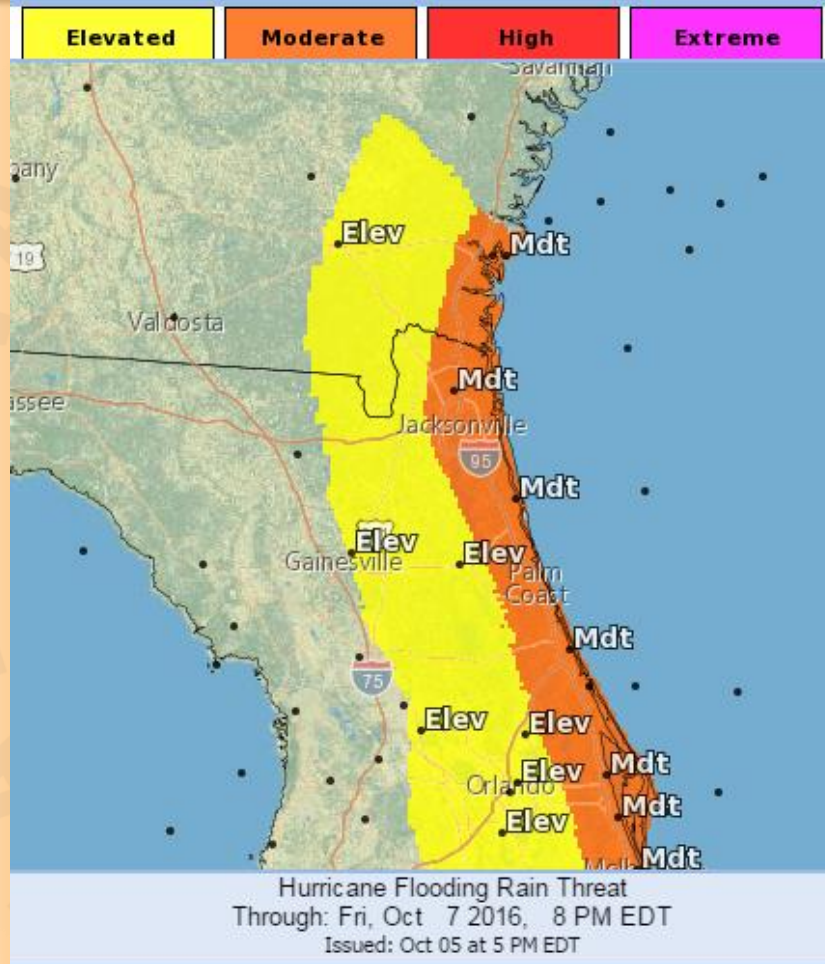
- Localized Pockets of very heavy rain are possible through the duration of the storm event.
- Thursday through late Friday night, intervals of squally rain bands will come ashore
- Some areas may repeatedly get heavy rainfall, causing localized to large swaths of flooding, particularly over the coastal counties.
- Heavy rainfall combined with storm tide may exasperate standing water in some coastal areas.

The storm could bring tropical storm and/or hurricane conditions to SOME PORTION of the Watch area. Closely monitor the future progress of the storm. Be careful about rumors, erroneous social media posts and unwarranted speculation.



# Flooding Threat

A hurricane watch means hurricane conditions ARE POSSIBLE within the warned area within the next 36 to 48 hours.  
Some local precautions need to be taken at this point. Please heed the advice of local officials and emergency management.



The storm could bring tropical storm and/or hurricane conditions to SOME PORTION of the Watch area. Closely monitor the future progress of the storm. Be careful about rumors, erroneous social media posts and unwarranted speculation.



# Making Informed Decisions

A tropical storm watch means tropical storm conditions ARE POSSIBLE somewhere within the warned area within the next 36 to 48 hours.

Some local precautions need to be taken at this point. Please heed the advice of local officials and emergency management.

- **Double check your emergency supply kit and pick up any missing items.**
- **Fill your vehicle's gas tank.**
- **Get cash, secure papers and valuables, and refill medication.**
- **If you plan on evacuating, make arrangements, book reservations, and pack your emergency supply kit and valuables in your car.**
- **Evacuate immediately if told to do so.**

**Hurricane or Tropical Storm  
WATCH is Issued**

- **Final Actions if Leaving**
  - Turn off propane tanks.
  - Unplug small appliances.
  - Empty the refrigerator and freezer.
  - Turn off utilities, if advised to do so.
  - Lock home securely.
  - Take pets with you.
- **Final Actions if Staying**
  - Close storm shutters, board up remaining doors and windows, and brace garage doors. Do not use tap on windows!
  - Lower water level in pools by one foot.
  - Turn refrigerator or freezer to coldest setting and open only if necessary.
  - Be prepared to turn off utilities
  - Identify a safe room with no windows.

**Hurricane or Tropical Storm  
WARNING is Issued**

For a comprehensive emergency supply kit list visit [www.ready.gov/kit](http://www.ready.gov/kit).



# Major Hurricane Matthew Talking Points

A hurricane watch means hurricane conditions ARE POSSIBLE within the warned area within the next 36 to 48 hours.  
Some local precautions need to be taken at this point. Please heed the advice of local officials and emergency management.

- On the current official forecast track, the closest approach of MAJOR Hurricane Matthew to the local coast would be Friday and Friday night.
- Potential Impacts:
  - **Sustained Hurricane to Major Hurricane** winds could occur over as portion of the region, this is especially true from Flagler Beach to Amelia Island!
  - Life threatening storm surge with huge, damaging waves on top of it are possible.
  - Wave Run Up WILL push the surge inland past the dunes in weak points such as vehicle crossovers.
  - Tropical Storm or greater conditions could occur for 24 or more hours!
  - **A shift in the track farther west will increase local impacts dramatically.**
  - **HEED the advice of local officials and Emergency Management.**
- Closely monitor the latest forecast from NHC/NWS Jacksonville for updates. The next scheduled briefing will be issued around Midnight tonight.
- Complete stocking your hurricane supply kits. Review your evacuation plan.

The storm could bring tropical storm and/or hurricane conditions to SOME PORTION of the Watch area. Closely monitor the future progress of the storm. Be careful about rumors, erroneous social media posts and unwarranted speculation.

30