



# Major Hurricane Matthew Briefing Situation Overview

A hurricane watch means hurricane conditions ARE POSSIBLE within the warned area within the next 36 to 48 hours.  
Some local precautions need to be taken at this point. Please heed the advice of local officials and emergency management.

**...NEW HURRICANE WATCHES ISSUED FOR NORTHEAST FLORIDA COASTAL COUNTIES AND CLAY AND PUTNAM COUNTIES ...**

**...TROPICAL STORM WATCH FOR MARION, ALACHUA, UNION, BRADFORD AND BAKER COUNTIES...**

- ☛ **Dangerous Hurricane Matthew expected to approach the Florida First Coast and Southeast Georgia Coast Friday through Friday night into early Saturday morning. Major Hurricane Matthew forecast to be precariously closer to the immediate coast.**
- ☛ **Given the incremental westward trend in the model data, the expected impacts continue to amplify, and perhaps even become devastating .**
- ☛ **Destructive and even deadly coastal storm tide inundation in concert with heavy rain is likely to probable with Major Hurricane Matthew.**
- ☛ **Preparations for the potential of a major hurricane passing near the northeast Florida and Southeast Georgia coastline should continue in earnest and with high urgency. Residents and visitors are reminded once again to maintain a high level of situational awareness for the next few days.**

The storm could bring tropical storm and/or hurricane conditions to SOME PORTION of the Watch area. Closely monitor the future progress of the storm. Be careful about rumors, erroneous social media posts and unwarranted speculation.

1



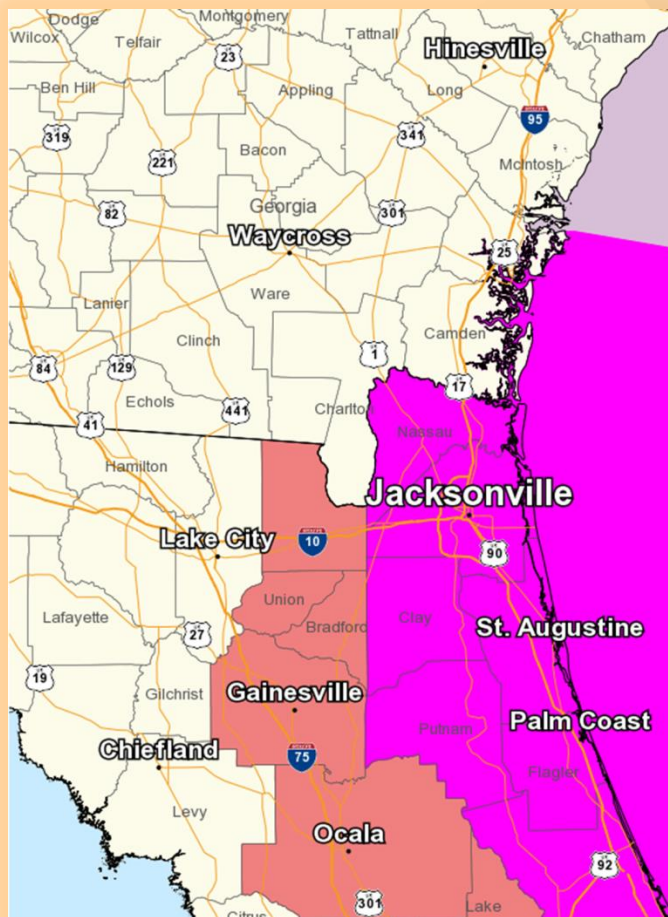
# Hurricane and Tropical Storm Watches

A hurricane watch means hurricane conditions ARE POSSIBLE within the warned area within the next 36 to 48 hours.

Some local precautions need to be taken at this point. Please heed the advice of local officials and emergency management.

 Hurricane Watch

 Tropical Storm Watch



By late Friday afternoon, Hurricane Matthew is anticipated to be 50 miles directly east of Palm Coast, FL. In our offshore waters between 40 and 60 nautical miles offshore of Palm Coast, forecasted winds are near 110 mph with gusts to 135 mph.

If the track shifts west, hugging closer to the coast, these types of winds can be realized closer to the nearshore waters and near the immediate coast.

It is important to remain diligent and situationally aware the next couple days.

The storm could bring tropical storm and/or hurricane conditions to SOME PORTION of the Watch area. Closely monitor the future progress of the storm. Be careful about rumors, erroneous social media posts and unwarranted speculation.



# Major Hurricane Matthew Briefing Situation Overview

A hurricane watch means hurricane conditions ARE POSSIBLE within the warned area within the next 36 to 48 hours.  
Some local precautions need to be taken at this point. Please heed the advice of local officials and emergency management.

- At 5 a.m. Tuesday, Category 3 Hurricane Matthew was about 814 miles South-Southeast of Mayport, Florida, moving north around 10 mph. Maximum sustained winds remain near 125 mph.
- Changes since last advisory: Increasing chances of hurricane force winds over coastal areas of northeast Florida into some interior portions along the St. Johns River Basin, and over the adjacent coastal waters due to the proximity of the system near the coast. Tropical force winds are anticipated in some inland locations between U.S. 301 and Interstate 75.
- As the hurricane turns northwestward through the Bahamas, today through mid Thursday evening increasing northeast winds are expected over Southeast Georgia and Northeast Florida, well removed from the hurricane's circulation. Local coastal impacts including strong winds, high surf, beach erosion and waves of heavy rainfall are possible today through Thursday night.
- Based on the latest forecast, tropical force storm conditions could impact the adjacent NE FL Atlantic waters late Thursday night, and then NE Florida Friday morning and SE GA starting Friday afternoon into Saturday morning. Hurricane conditions are possible over the adjacent Atlantic coastal waters Friday and over NE Florida Friday afternoon and evening.
- Matthew's future forecasts should continue to be closely monitored, **a further westward track shift will increase local impacts dramatically.**

The storm could bring tropical storm and/or hurricane conditions to SOME PORTION of the Watch area. Closely monitor the future progress of the storm. Be careful about rumors, erroneous social media posts and unwarranted speculation.

3



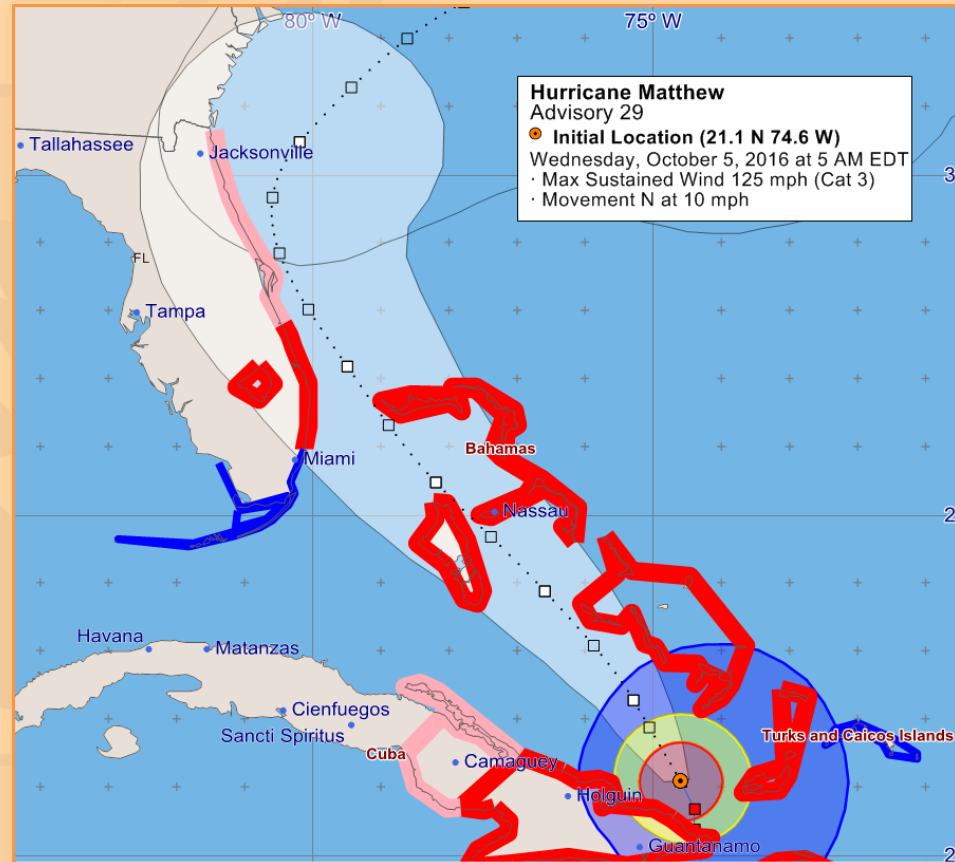
# Five Day Cone of Uncertainty

A hurricane watch means hurricane conditions ARE POSSIBLE within the warned area within the next 36 to 48 hours.  
Some local precautions need to be taken at this point. Please heed the advice of local officials and emergency management.

Based on the latest NHC forecast:

- **Matthew's closest approach to northeast Florida and southeast Georgia will likely be Friday and Friday night.**
- **Matthew will bring significant marine and coastal concerns to Northeast Florida and Southeast Georgia.**
- ***Based on our normal track error the storm could track onshore PLEASE HEED the advice of Emergency Officials***

NOTE: The forecast cone (shaded white area and hatched area in the graphic) is where the center of the storm is expected to track 2/3 of the time.

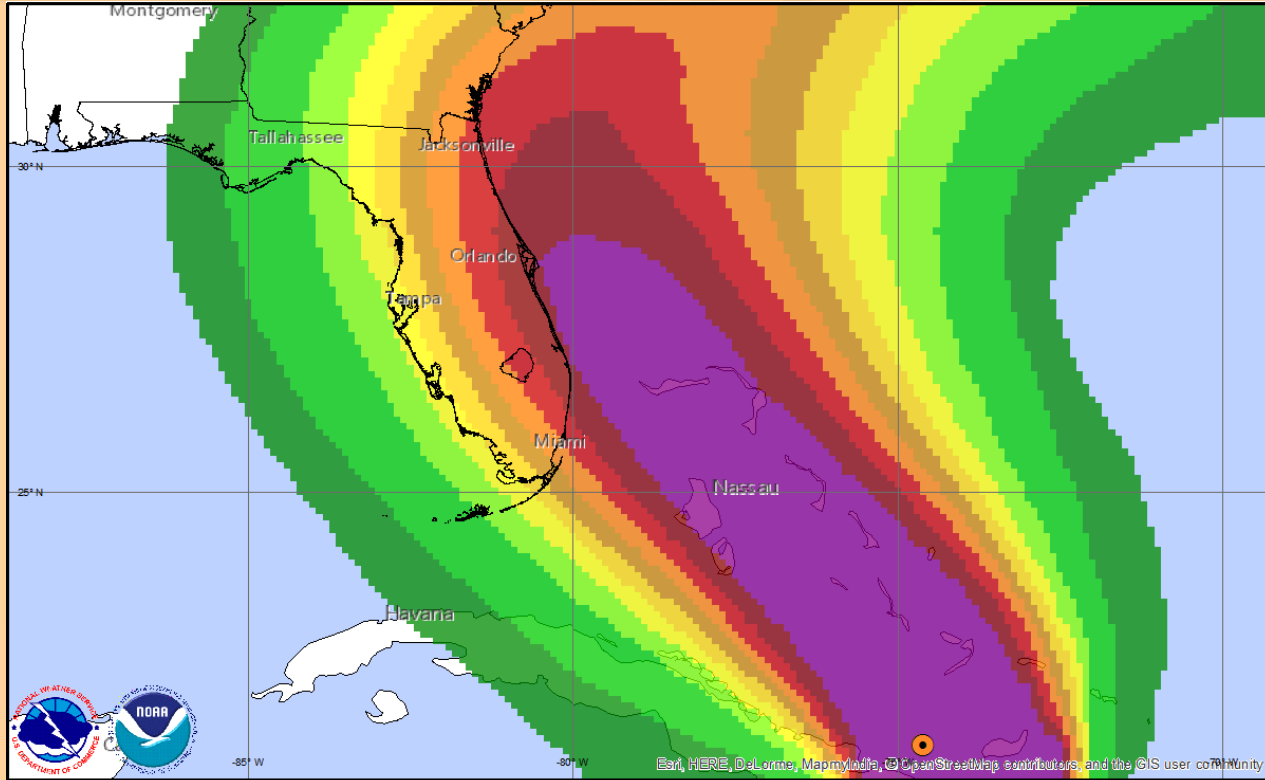


The storm could bring tropical storm and/or hurricane conditions to SOME PORTION of the Watch area. Closely monitor the future progress of the storm. Be careful about rumors, erroneous social media posts and unwarranted speculation.



# Tropical Storm Force Wind Speed Probabilities

A hurricane watch means hurricane conditions ARE POSSIBLE within the warned area within the next 36 to 48 hours.  
Some local precautions need to be taken at this point. Please heed the advice of local officials and emergency management.



## Major Hurricane MATTHEW

Advisory 29  
Wednesday October 05, 2016  
05 AM ET

NWS National Hurricane Center **Advisory Position:** ●

## Tropical Storm Force Wind Probabilities

Valid for 5 days ending 08 PM ET Sun Oct 09  
Cumulative Probability > 39 mph Sustained Winds



The storm could bring tropical storm and/or hurricane conditions to SOME PORTION of the Watch area. Closely monitor the future progress of the storm. Be careful about rumors, erroneous social media posts and unwarranted speculation.

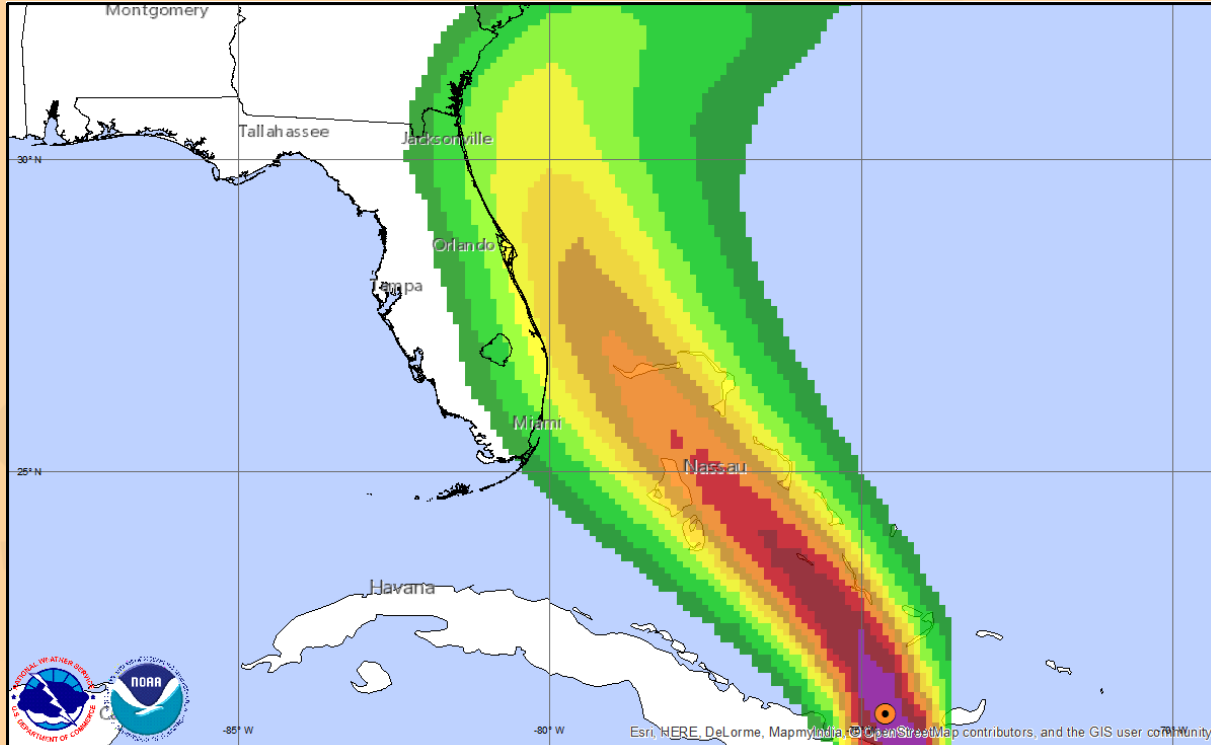




# Hurricane Force Wind Probabilities

These value are increasing, they are indicating a chance of a high impact event.

A hurricane watch means hurricane conditions ARE POSSIBLE within the warned area within the next 36 to 48 hours.  
Some local precautions need to be taken at this point. Please heed the advice of local officials and emergency management.



## Major Hurricane MATTHEW

Advisory 29  
Wednesday October 05, 2016  
05 AM ET

NWS National Hurricane Center **Advisory Position:** ●

## Hurricane Force Wind Probabilities

Valid for 5 days ending 08 PM ET Sun Oct 09  
Cumulative Probability > 74 mph Sustained Winds



The storm could bring tropical storm and/or hurricane conditions to SOME PORTION of the Watch area. Closely monitor the future progress of the storm. Be careful about rumors, erroneous social media posts and unwarranted speculation.



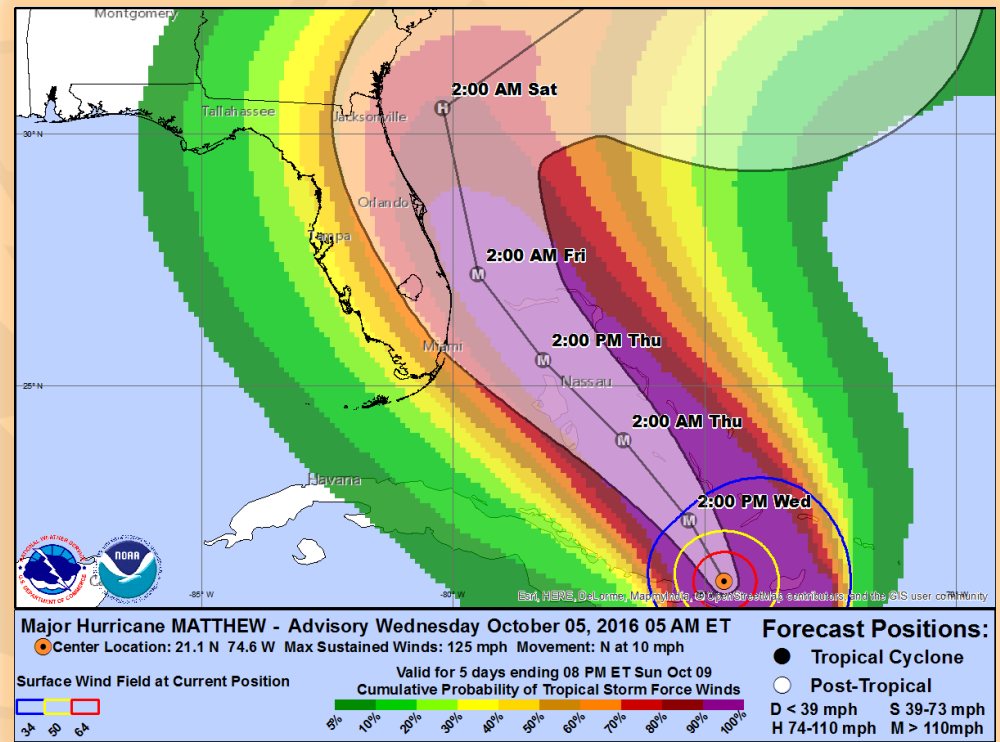
# Five Day Cone of Uncertainty And Area of Potential Impacts

A hurricane watch means hurricane conditions ARE POSSIBLE within the warned area within the next 36 to 48 hours.  
Some local precautions need to be taken at this point. Please heed the advice of local officials and emergency management.

Based on the latest NHC forecast:

- Matthew's closest approach to northeast Florida and southeast Georgia will likely be Friday into late Friday night.
- Matthew will bring significant marine and coastal concerns to Northeast Florida and Southeast Georgia.
- *Based on our normal track error the storm could track onshore HEED the advice of Emergency Officials*

NOTE: The forecast cone (shaded white area and hatched area in the graphic) is where the center of the storm is expected to track 2/3 of the time.



The storm could bring tropical storm and/or hurricane conditions to SOME PORTION of the Watch area. Closely monitor the future progress of the storm. Be careful about rumors, erroneous social media posts and unwarranted speculation.



# Local Impacts

## Very High Confidence of Significant Coastal Impacts Late This Week

A hurricane watch means hurricane conditions ARE POSSIBLE within the warned area within the next 36 to 48 hours.

Some local precautions need to be taken at this point. Please heed the advice of local officials and emergency management.

### Expected Coastal Impacts:

- **Life Threatening Storm Surge is Possible.**
- **Large, Destructive surf.**
- Dangerous, frequent rip currents.
- Significant beach erosion.
- Based on the latest forecast, tropical force storm conditions could impact the adjacent NE FL Atlantic waters late Thursday night, and then NE Florida Friday morning and SE GA starting Friday afternoon into Saturday morning. Hurricane conditions are possible over the adjacent Atlantic coastal waters Friday and over NE Florida Friday afternoon and evening.

### Marine Impacts:

- Building seas and increasing winds beginning today (not totally due to the hurricane).
- Tropical Storm Conditions possible Thursday evening deteriorating into Hurricane Conditions Friday through Saturday.

### Potential Local Impacts if the track shifts farther west (left) of current track:

- Coastal flooding and heavy rainfall.
- Damaging winds.

Attribution to the *Times-Union*



A robust breaker produced by Hurricane Floyd during September 1999 approaches the Jacksonville Beach Pier. The end of the pier was smashed away.

The storm could bring tropical storm and/or hurricane conditions to SOME PORTION of the Watch area. Closely monitor the future progress of the storm. Be careful about rumors, erroneous social media posts and unwarranted speculation.

8



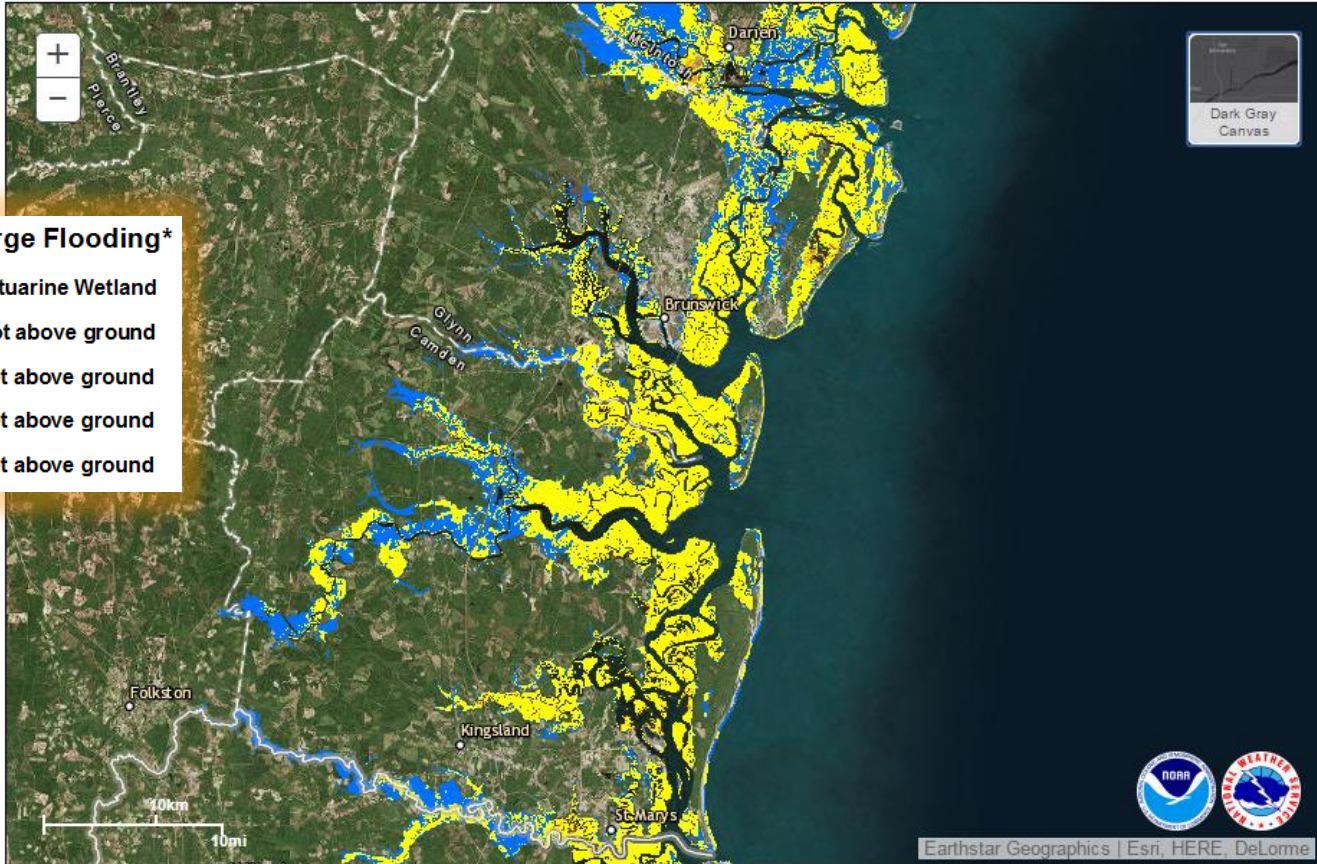


# Possible Storm Tide Inundation

*Along the Current track, These Values are expected to increase as we get closer to the event!*

A hurricane watch means hurricane conditions ARE POSSIBLE within the warned area within the next 36 to 48 hours.  
Some local precautions need to be taken at this point. Please heed the advice of local officials and emergency management.

NHC Potential Storm Surge Flooding Map  
Hurricane MATTHEW (2016) Advisory 29  
From 05 AM EDT Wednesday October 05 to 11 AM EDT Saturday October 08



### Potential Storm Surge Flooding\*

- Intertidal Zone/Estuarine Wetland
- Greater than 1 foot above ground
- Greater than 3 feet above ground
- Greater than 6 feet above ground
- Greater than 9 feet above ground

The storm could bring tropical storm and/or hurricane conditions to SOME PORTION of the Watch area. Closely monitor the future progress of the storm. Be careful about rumors, erroneous social media posts and unwarranted speculation.

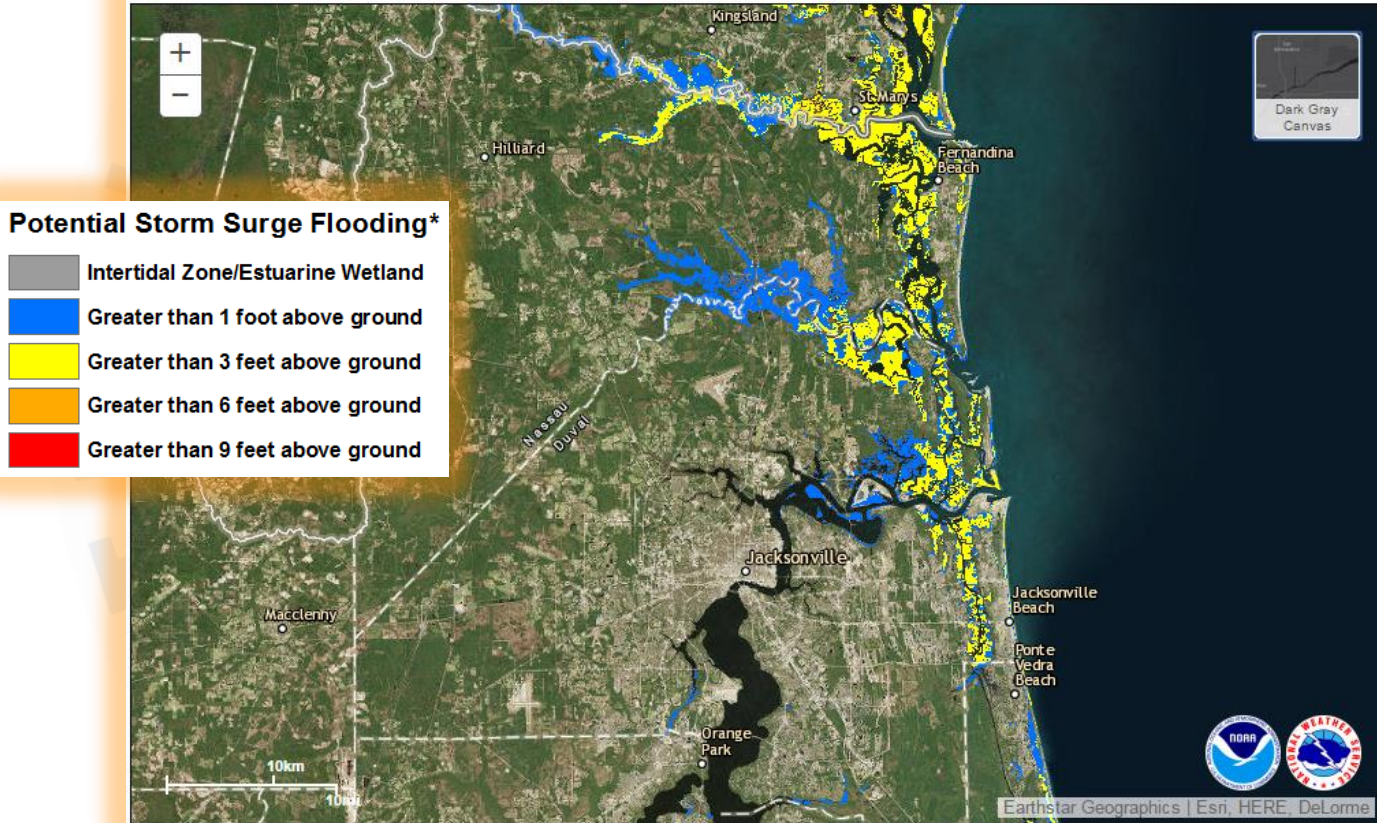


# Possible Storm Tide Inundation

*Along the Current track, These Values are expected to increase as we get closer to the event!*

A hurricane watch means hurricane conditions ARE POSSIBLE within the warned area within the next 36 to 48 hours.  
Some local precautions need to be taken at this point. Please heed the advice of local officials and emergency management.

NHC Potential Storm Surge Flooding Map  
Hurricane MATTHEW (2016) Advisory 29  
From 05 AM EDT Wednesday October 05 to 11 AM EDT Saturday October 08



The storm could bring tropical storm and/or hurricane conditions to SOME PORTION of the Watch area. Closely monitor the future progress of the storm. Be careful about rumors, erroneous social media posts and unwarranted speculation.



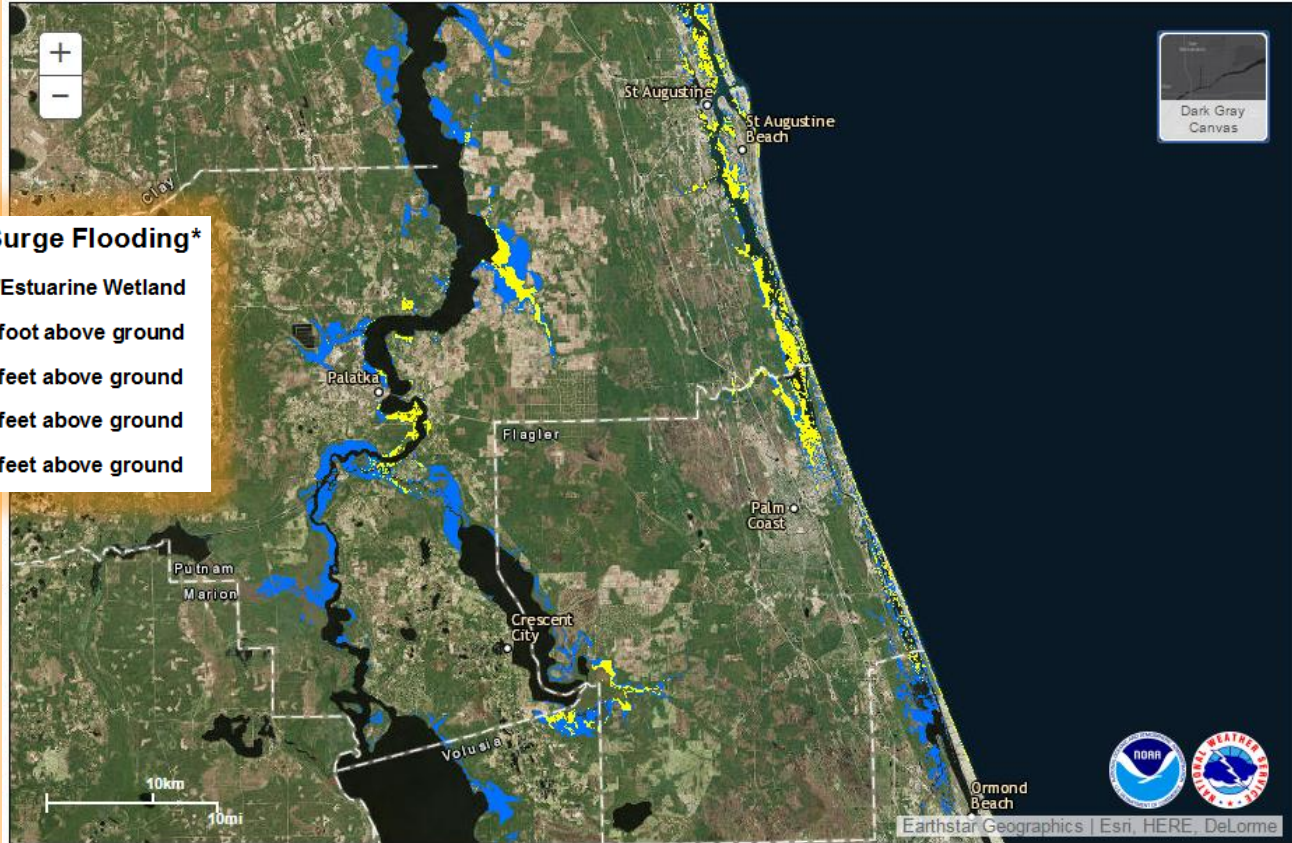


# Possible Storm Tide Inundation

*Along the Current track, These Values are expected to increase as we get closer to the event!*

A hurricane watch means hurricane conditions ARE POSSIBLE within the warned area within the next 36 to 48 hours.  
Some local precautions need to be taken at this point. Please heed the advice of local officials and emergency management.

NHC Potential Storm Surge Flooding Map  
Hurricane MATTHEW (2016) Advisory 29  
From 05 AM EDT Wednesday October 05 to 11 AM EDT Saturday October 08



### Potential Storm Surge Flooding\*

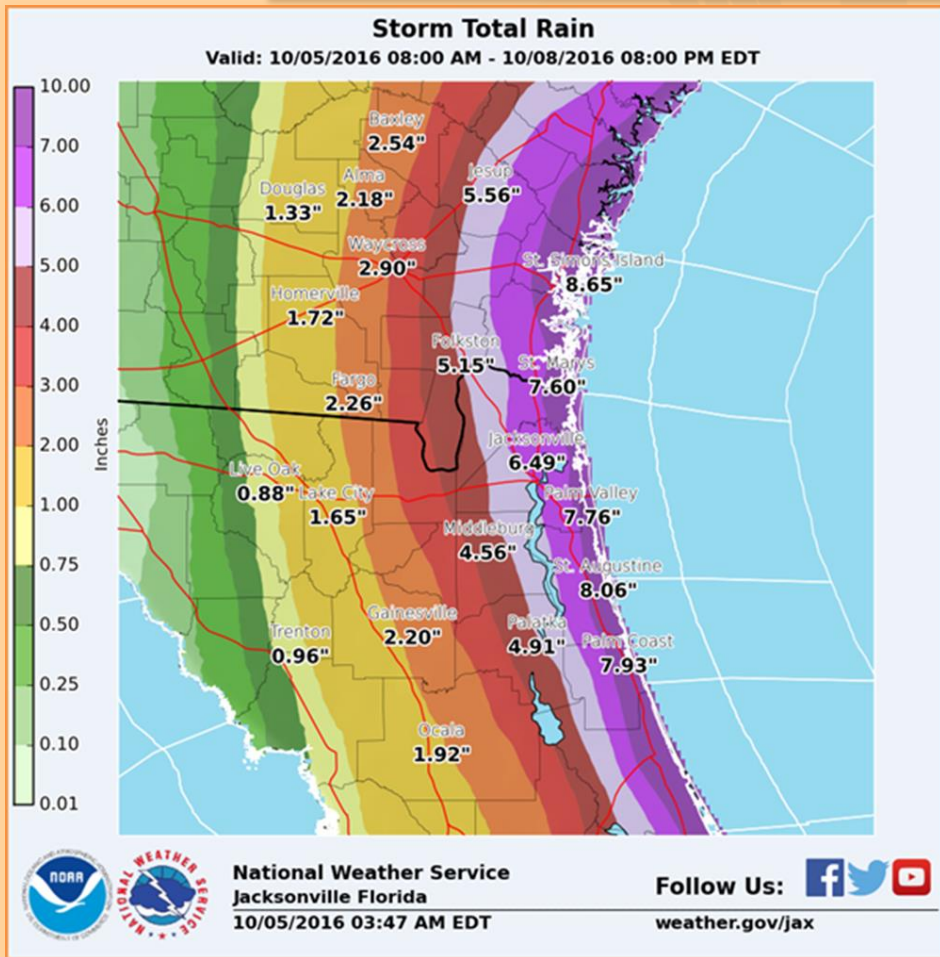
- Intertidal Zone/Estuarine Wetland
- Greater than 1 foot above ground
- Greater than 3 feet above ground
- Greater than 6 feet above ground
- Greater than 9 feet above ground

The storm could bring tropical storm and/or hurricane conditions to SOME PORTION of the Watch area. Closely monitor the future progress of the storm. Be careful about rumors, erroneous social media posts and unwarranted speculation.



# Pockets of Heavy Rain Possible

A hurricane watch means hurricane conditions ARE POSSIBLE within the warned area within the next 36 to 48 hours.  
Some local precautions need to be taken at this point. Please heed the advice of local officials and emergency management.



- Localized Pockets of very heavy rain are possible through the duration of the storm event.
- Thursday through late Friday night, intervals of squally rain bands will come ashore
- Some areas may repeatedly get heavy rainfall, causing localized to large swaths of flooding, particularly over the coastal counties.
- Heavy rainfall combined with storm tide may exasperate standing water in some coastal areas.

The storm could bring tropical storm and/or hurricane conditions to SOME PORTION of the Watch area. Closely monitor the future progress of the storm. Be careful about rumors, erroneous social media posts and unwarranted speculation.





# Making Informed Decisions

A tropical storm watch means tropical storm conditions ARE POSSIBLE somewhere within the warned area within the next 36 to 48 hours.

Some local precautions need to be taken at this point. Please heed the advice of local officials and emergency management.

- **Double check your emergency supply kit and pick up any missing items.**
- **Fill your vehicle's gas tank.**
- **Get cash, secure papers and valuables, and refill medication.**
- **If you plan on evacuating, make arrangements, book reservations, and pack your emergency supply kit and valuables in your car.**
- **Evacuate immediately if told to do so.**

**Hurricane or Tropical Storm  
WATCH is Issued**

- **Final Actions if Leaving**
  - Turn off propane tanks.
  - Unplug small appliances.
  - Empty the refrigerator and freezer.
  - Turn off utilities, if advised to do so.
  - Lock home securely.
  - Take pets with you.
- **Final Actions if Staying**
  - Close storm shutters, board up remaining doors and windows, and brace garage doors. Do not use tap on windows!
  - Lower water level in pools by one foot.
  - Turn refrigerator or freezer to coldest setting and open only if necessary.
  - Be prepared to turn off utilities
  - Identify a safe room with no windows.

**Hurricane or Tropical Storm  
WARNING is Issued**

For a comprehensive emergency supply kit list visit [www.ready.gov/kit](http://www.ready.gov/kit).



# Major Hurricane Matthew Talking Points

hurricane watch means hurricane conditions ARE POSSIBLE within the warned area within the next 36 to 48 hours.  
local precautions need to be taken at this point. Please heed the advice of local officials and emergency management.

- On the current official forecast track, the closest approach of Hurricane Matthew to the local coast would be Friday and Friday night.
- Potential Impacts:
  - Gusty onshore winds, high surf, beach erosion, and frequent rip currents expected to develop today and tonight. Local wind impacts will be similar to a strong local nor'easter.
  - Based on the latest forecast, tropical force storm conditions could impact the adjacent NE FL Atlantic waters late Thursday night, and then NE Florida Friday morning and SE GA starting Friday afternoon into Saturday morning. Hurricane conditions are possible over the adjacent Atlantic coastal waters Friday and over NE Florida Friday afternoon and evening.
  - **A shift in the track farther west will increase local impacts dramatically.**
  - **HEED the advice of local officials and Emergency Management.**
- Closely monitor the latest forecast from NHC/NWS Jacksonville for updates. The next scheduled briefing will be issued around 1215 pm this morning.
- Complete stocking your hurricane supply kits. Review your evacuation plan.

The storm could bring tropical storm and/or hurricane conditions to SOME PORTION of the Watch area. Closely monitor the future progress of the storm. Be careful about rumors, erroneous social media posts and unwarranted speculation.

15