

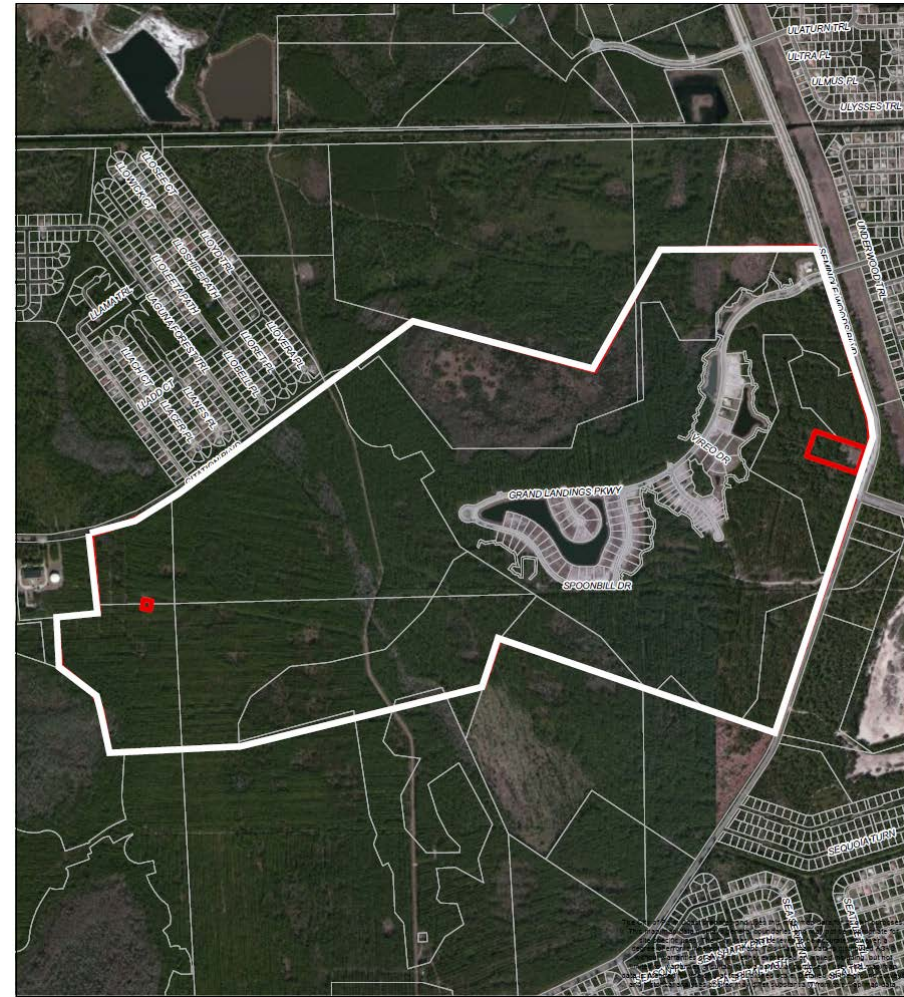


**City Initiated
Comprehensive Plan Amendments (CPA)
&
Zoning Map Amendments**

**City Council (2nd Reading)
May 6, 2014**

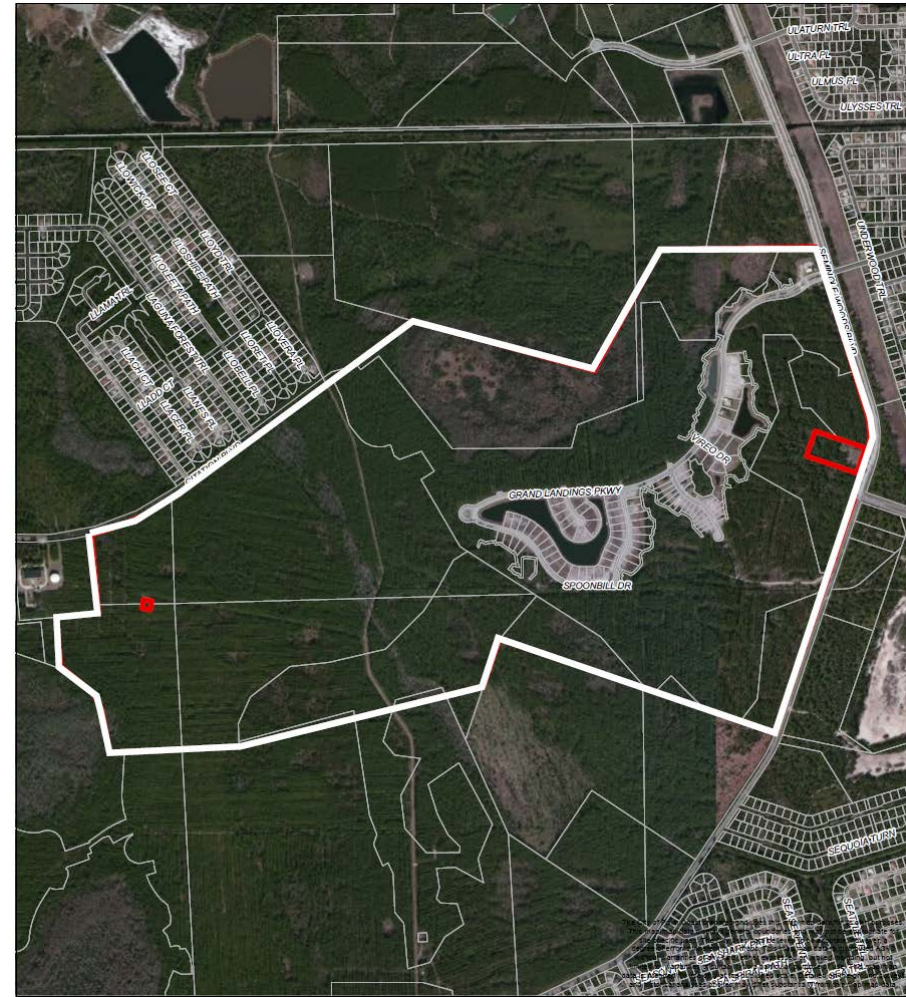
Grand Landings

- Annexed in 2007
- 774 +/- acres
 - 749 acres Residential
 - 25 acres Commercial area
- Future Land Use Map Amendment
 - (Low Density Residential to Residential)
 - (Low Intensity Commercial to Mixed Use)
- MPD amendment



Grand Landings

- No changes in permitted uses & amenities
- 749 units
- 150,000 sq. ft. neighborhood commercial
- Amenity center
- 14 acre Dedicated park land
- Potential for residential units in Mixed Use area



Grand Landings FLUM & Rezoning Recommendation

- No Objections from State Agencies
- Staff and the Planning and Land Development Regulation Board recommend Approval of the FLUM and MPD



Next Steps

Proposed FLUM amendment transmitted to State Agencies for comments

