

Data Report

Florida Public High School Graduation Rates, 2010-11

Series 2012-05D

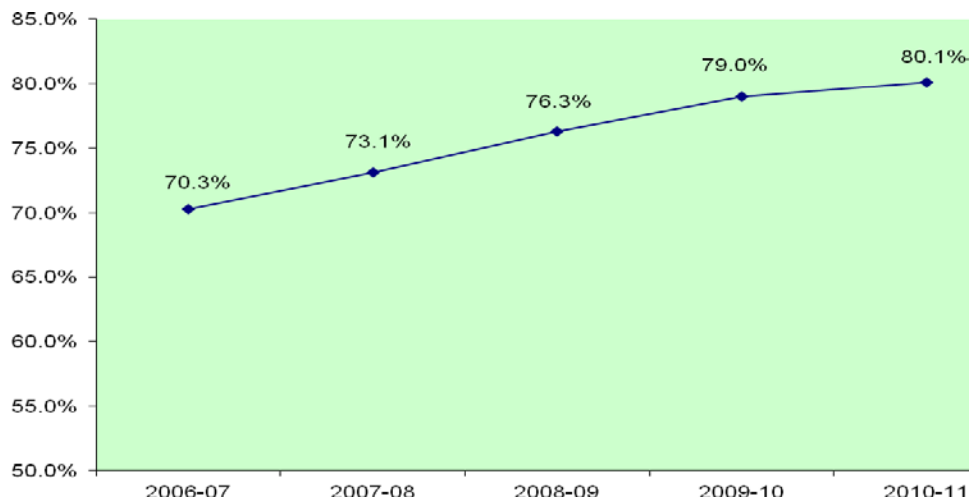
December 2011

Florida's National Governor's Association (NGA) Compact Graduation Rate

Florida calculates the National Governor's Association (NGA) Compact graduation rate, which includes both standard and special diploma recipients as graduates but excludes GEDs as graduates, both regular and adult. In addition, students who transfer to adult education are not included in this calculation. This graduation rate is currently used in Florida's school accountability system in the high school grades calculation.

Florida's NGA high school graduation rate has consistently increased during the past five years, rising from 70.3 percent in 2006-07 to 80.1 percent in 2010-11.

Figure 1: Four-Year NGA Graduation Rate, 2006-07 through 2010-11



Florida Department of Education
Gerard Robinson, Commissioner

Florida's NGA graduation rate is a cohort graduation rate. A cohort is defined as a group of students on the same schedule to graduate. The graduation rate measures the percentage of students who graduate within four years of their first enrollment in ninth grade. Subsequent to their enrollment in ninth grade, exiting transfers and deceased students are removed from the calculation. Entering transfer students are included in the count of the class with which they are scheduled to graduate, based on their date of enrollment. NGA graduation rates have been reported in the No Child Left Behind (NCLB) School Public Accountability Reports (SPARs) since 2005-06 and are provided on-line at <http://doeweb-prd.doe.state.fl.us/eds/nclbpar/index.cfm>. District-level graduation rates are provided in tables 10 through 14.

If you have questions regarding the content of this publication, please contact the Florida Department of Education, Bureau of Education Information and Accountability Services at askeias@fldoe.org. For school-level graduation and dropout rates, visit <http://www.fldoe.org/eias/eiaspubs/xls/gradcohort1011.xls> and <http://www.fldoe.org/eias/eiaspubs/xls/dropschl1011.xls>.

Types of Graduation Rates Calculated in Florida

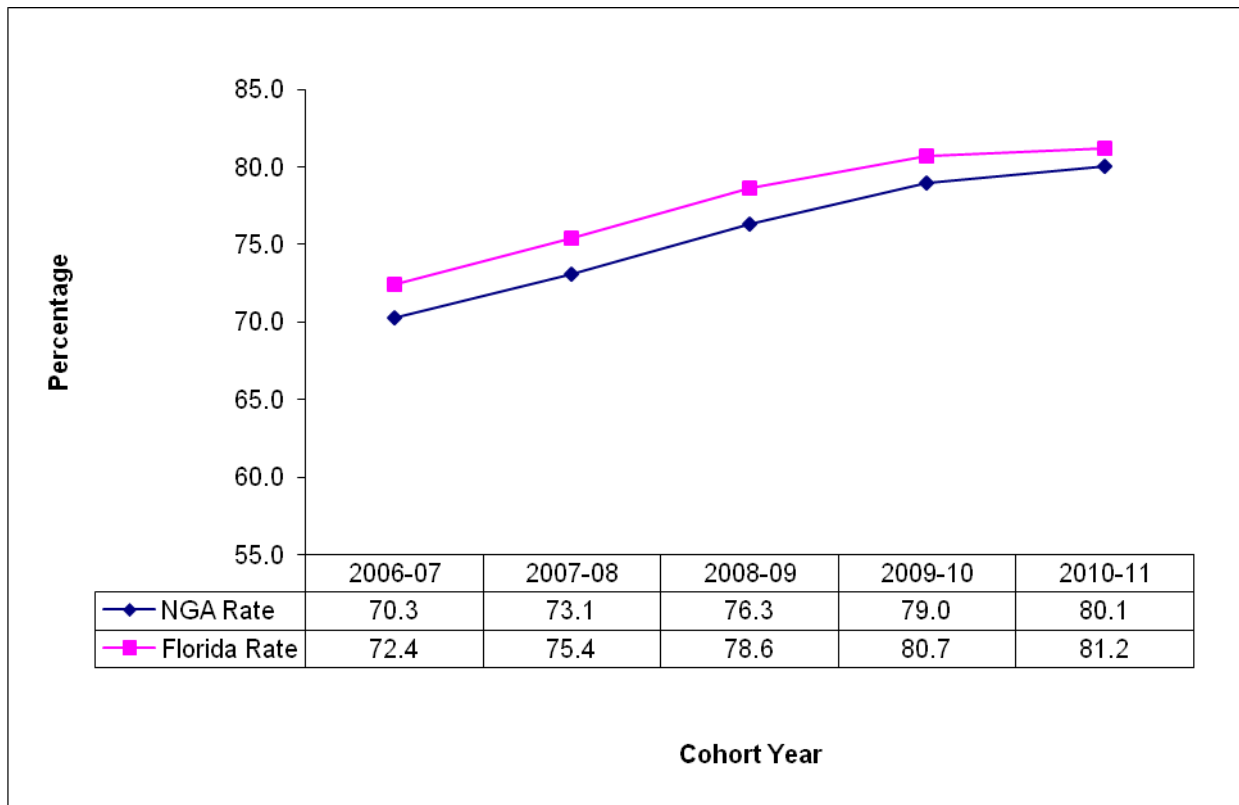
Florida currently calculates the NGA graduation rate, described above, which was mandated by the Florida Legislature in 2006 to meet an agreement with the National Governors Association Compact and was first implemented using the data for 2004-05 and reported in the 2005-06 NCLB SPARs, and Florida's regular rate, which has been calculated consistently since 1998-99. In addition, Florida will calculate the federal uniform graduation rate, which will be released early in 2012. The federal uniform rate is required for federal accountability purposes beginning in 2011-12.

All of Florida's graduation rates use the cohort method of tracking individual students in and out of the system from their entrance into the ninth grade through completion four years later. However, each rate defines a graduate differently. The differences between the NGA rate and Florida's regular rate are as follows:

- The NGA graduation rate counts as graduates recipients of standard and special diplomas but not GEDs.
- Florida's regular rate counts all diploma recipients as graduates. This includes standard and special diplomas and all GEDs.

The chart below shows an increase for both versions of the graduation rate from 2006-07 to 2010-11.

Figure 2: Florida's Graduation Rates, 2006-07 through 2010-11



Graduation Rates by Race/Ethnicity and Gender:

Beginning with the 2010-11 school year, Florida implemented new data elements for collecting and reporting student demographic data in compliance with adjustments made by the U.S. Office of Management and Budget to Statistical Policy Directive No. 15. These revisions allow students to select more than one race and to report their ethnicities and races separately when reporting their demographic information. For ethnicity, students select whether they are of Hispanic or Latino origin. All students who indicated that they are Hispanic or Latino are included only in the Hispanic/Latino rates in this report; they are not included in the racial categories they have selected.

For race, students select one or more of the following: American Indian or Alaska Native, Asian, Black or African American, Native Hawaiian or Other Pacific Islander, White. Students who select more than one racial category, but do not indicate that they are Hispanic or Latino, are included in the Two or More Races category in this report.

Table 1: NGA Graduation Rates by Gender within Race/Ethnicity, 2006-07 through 2010-11

	White			Black or African American			Hispanic/Latino			Asian		
	F	M	Total	F	M	Total	F	M	Total	F	M	Total
2006-07	82.0%	75.0%	78.6%	62.7%	51.0%	56.9%	68.7%	60.8%	64.3%	84.5%	80.2%	82.2%
2007-08	84.1%	77.3%	80.8%	66.6%	54.9%	60.8%	72.2%	63.6%	67.6%	85.4%	82.6%	83.8%
2008-09	86.4%	79.9%	83.1%	70.3%	59.4%	64.9%	76.5%	67.7%	72.1%	89.3%	86.5%	87.9%
2009-10	88.3%	82.5%	85.4%	73.2%	63.5%	68.4%	79.3%	71.3%	75.3%	91.6%	88.0%	89.8%
2010-11	89.3%	84.2%	86.8%	72.3%	64.3%	68.4%	80.2%	74.5%	77.3%	90.8%	88.4%	89.6%

Table 2: NGA Graduation Rates by Gender within Race/Ethnicity, 2006-07 through 2010-11, continued

	American Indian/Alaska Native			Two or More Races			Pacific Islander			All Races Total
	F	M	Total	F	M	Total	F	M	Total	
2006-07	77.5%	67.4%	71.8%	77.7%	67.5%	72.3%				70.3%
2007-08	83.3%	73.2%	76.1%	81.2%	74.2%	77.3%				73.1%
2008-09	79.2%	74.5%	76.8%	84.3%	77.9%	81.3%				76.3%
2009-10	80.4%	73.5%	76.8%	86.8%	80.3%	83.7%				79.0%
2010-11	80.2%	76.7%	78.4%	87.8%	81.4%	84.5%	83.3%	66.7%	75.0%	80.1%

Table 3: Regular Graduation Rates by Gender within Race/Ethnicity, 2006-07 through 2010-11

	White			Black or African American			Hispanic/Latino			Asian		
	F	M	Total	F	M	Total	F	M	Total	F	M	Total
2006-07	83.9%	79.0%	81.0%	64.0%	53.5%	58.7%	69.7%	62.5%	66.0%	81.0%	58.7%	66.0%
2007-08	86.0%	81.3%	83.6%	67.8%	57.2%	62.5%	72.9%	65.4%	69.1%	83.6%	62.5%	69.1%
2008-09	88.3%	83.8%	86.0%	71.6%	61.5%	66.7%	77.5%	69.6%	73.5%	86.0%	66.7%	73.5%
2009-10	89.6%	85.1%	87.4%	74.5%	65.6%	70.1%	80.0%	72.8%	76.4%	87.4%	70.1%	76.4%
2010-11	90.1%	86.1%	88.1%	72.9%	65.7%	69.4%	80.7%	75.5%	78.1%	91.0%	88.9%	89.9%

Table 4: Regular Graduation Rates by Gender within Race/Ethnicity, 2006-07 through 2010-11, continued

	American Indian/Alaska Native			Two or More Races			Pacific Islander			All Races Total
	F	M	Total	F	M	Total	F	M	Total	
2006-07	83.2%	74.7%	75.4%	72.4%	81.0%	58.7%				66.0%
2007-08	84.2%	80.3%	80.5%	75.4%	83.6%	62.5%				69.1%
2008-09	88.9%	79.7%	83.7%	78.6%	86.0%	66.7%				73.5%
2009-10	90.4%	79.9%	85.3%	80.7%	87.4%	70.1%				76.4%
2010-11	80.7%	78.4%	79.5%	88.5%	82.7%	85.6%	83.3%	75.0%	78.6%	81.2%

Florida’s Rates versus National Graduation Rate Rankings

Many national organizations and other interest groups **estimate** graduation rates, which usually differ significantly from one another. It can be quite confusing and often misleading when various organizations release national graduation rankings, but they do not match the rate Florida released. Student database systems and data collection methodologies have varied from state to state, and national studies have had to rely on the lowest common denominators available across all states to make comparisons. Additionally, not all states have fully implemented a longitudinal data system, as Florida has. This means that some national-level studies may not follow the precise methodology for calculating graduation rates that Florida has been using for many years, and are, therefore, merely estimates of graduating students rather than exact counts and percentages.

Diploma Types

Florida students may receive several types of diplomas upon completion of high school. A complete list of the diploma definitions is provided in Appendix A. Table 5 details the number of each type of diploma awarded for the past five cohorts.

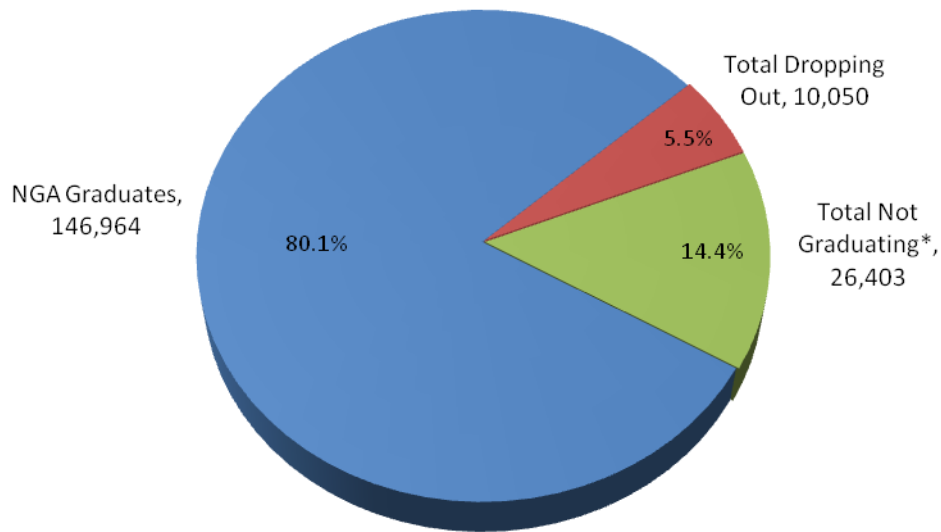
Table 5: Diploma Types by Number of Diplomas Awarded (Cohort Based)

Diploma Types	Diploma Definitions	2006-07	2007-08	2008-09	2009-10	2010-11
W06	Any student who graduated from school and met all of the requirements to receive a standard diploma	122,391	125,650	127,855	132,783	133,766
W07	Any student who graduated from school with a special diploma based on option one--mastery of Sunshine State Standards for Special Diploma	3,919	3,773	3,462	3,750	3,408
W10	Any student in a GED Exit Option Model who passed the GED Tests and the graduation test and was awarded a standard diploma	2,614	2,604	2,585	1,740	927
W27	Any student who graduated from school with a special diploma based on option two--mastery of employment and community competencies	780	656	489	401	217
W43	Any adult student who graduated from school with a standard diploma	338	393	343	297	227
W45	Any adult student who left school with a State of Florida diploma (GED)	2,914	3,435	3,223	2,365	2,906
W52	Any adult student who graduated from school with a standard diploma and satisfied the graduation test requirement through an alternate assessment	1	11	14	12	6
W6A	Any student who graduated from school and met all of the requirements to receive a standard diploma, based on the 18-credit college preparatory graduation option	210	89	62	89	15
W6B	Any student who graduated from school and met all of the requirements to receive a standard diploma, based on the 18-credit career preparatory graduation option	41	19	18	27	6
WFA	Any student who graduated from school with a standard diploma based on an 18-credit college preparatory graduation option and satisfied the graduation test requirement through an alternate assessment	36	14	12	8	6
WFB	Any student who graduated from school with a standard diploma based on an 18-credit career preparatory graduation option and satisfied the graduation test requirement through an alternate assessment	11	2	8	8	1
WFT	Any student who graduated from school with a standard diploma and satisfied the graduation test requirement through an alternate assessment (For students meeting accelerated high school graduation option requirements, see WFA and WFB.)	3,985	6,546	9,410	10,458	5,865
WFW	Any student who graduated from school with a standard diploma and an FCAT waiver	2,883	2,870	2,767	2,700	3,447
WGA	Any student in a GED Exit Option Model who passed the GED Tests, satisfied the graduation test requirement through an alternate assessment, and was awarded a standard diploma	13	53	81	83	21
WGD	Any student participating in the GED Exit Option Model who passed the GED Tests but did not pass the graduation test and was awarded a State of Florida diploma	1,140	1,156	995	931	578
TOTAL		141,276	147,271	151,324	155,652	151,396

Withdrawal Status of All Students in the NGA Graduation Cohort

Florida's NGA graduation rate is 80.1 percent, but that doesn't mean that 19.9 percent of students in the cohort are dropouts. In a cohort students can be classified as graduates, dropouts, and non-graduates. The non-graduates are those students who have been retained and are still in school or students who received certificates of completion. In Florida's 2010-11 NGA graduation rate cohort, 5.5 percent of the students were dropouts. Figure 3 illustrates the proportion students of the 2010-11 NGA cohort who graduated, dropped out, or did not graduate. District-level cohort dropout rates are provided in Table 17.

Figure 3: 2010-11 Graduation Cohort by Withdrawal Code Category (NGA)



*Non-graduates for the NGA definition include certificates of completion, GED recipients, and repeaters.

Florida also calculates a single-year dropout rate for federal reporting purposes. This sometimes causes confusion when comparing the graduation rates to Florida's published single-year dropout rate. These rates are not inverses of each other. The differences are as follows:

The rates apply to different periods of time.

- Graduation rate is a four-year, cohort-based indicator.
- Single-year dropout rate is a one-year indicator.

The rates apply to different populations.

- Graduation rate tracks the progress of a group of students who entered the same grade at the same time over a four-year period.
- Single-year dropout rate identifies **all** ninth- through twelfth-grade students in **one** year.

Single-Year Dropout Rates

Florida's ninth through twelfth grade, single-year dropout rate is the percentage of ninth- through twelfth-grade dropouts compared to the ninth- through twelfth-grade total, year-long student membership. A dropout is defined as a student who withdraws from school for any of several reasons without transferring to another school, home education program, or adult education program. The definitions for a dropout are listed below in Table 9.

Florida's 2010-11 ninth through twelfth grade, single year dropout rate has declined for the fourth year in a row. District-level single-year dropout rates are provided in Tables 15 and 16. For school-level dropout rates, please visit <http://www.fldoe.org/eias/eiaspubs/xls/dropschl1011.xls>.

Figure 4: 9th-12th Grade Single-Year Dropout Rates, 2006-07 through 2010-11

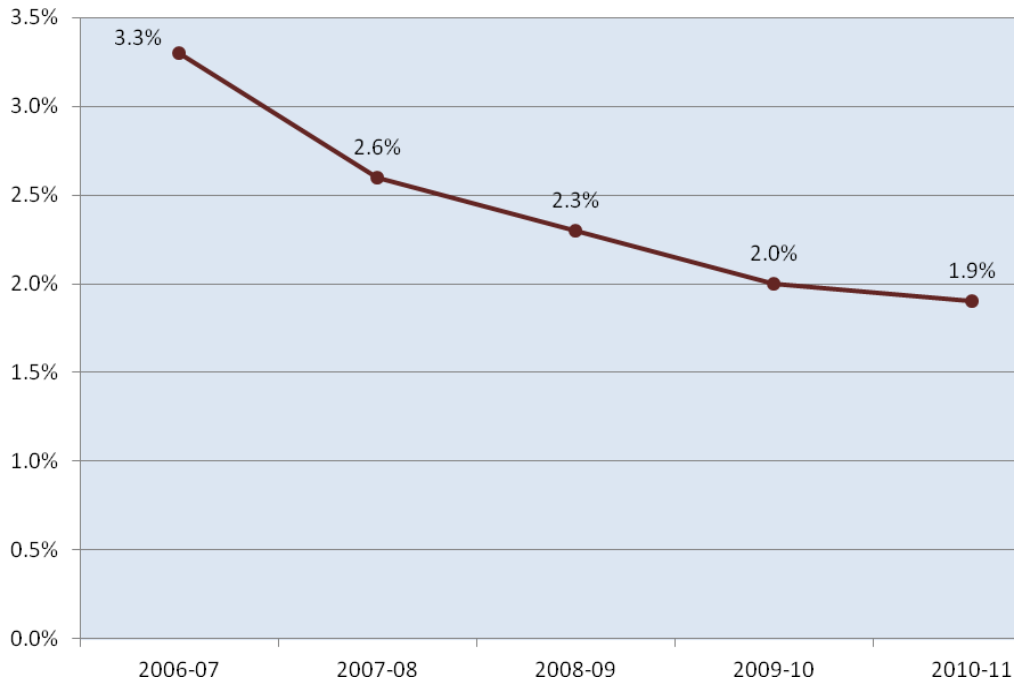


Table 6: 9th-12th Grade, Single-Year Dropouts by Gender within Race/Ethnicity, 2006-07 through 2010-11

	White			Black or African American			Hispanic/Latino			Asian		
	F	M	Total	F	M	Total	F	M	Total	F	M	Total
2006-07	2.1%	2.6%	2.4%	4.1%	5.0%	4.7%	3.3%	4.4%	3.9%	1.3%	2.0%	1.7%
2007-08	1.6%	2.1%	1.9%	3.3%	4.0%	3.6%	2.7%	3.5%	3.1%	0.8%	1.2%	1.0%
2008-09	1.4%	1.8%	1.6%	3.0%	3.7%	3.4%	2.2%	2.9%	2.5%	0.6%	1.0%	0.8%
2009-10	1.2%	1.6%	1.4%	2.6%	3.5%	2.9%	2.1%	3.0%	2.5%	0.7%	0.8%	0.8%
2010-11	1.1%	1.6%	1.4%	2.5%	3.4%	3.0%	1.7%	2.5%	2.1%	0.5%	0.8%	0.6%

Table 7: 9th-12th Grade, Single-Year Dropouts by Gender within Race/Ethnicity, 2006-07 through 2010-11, continued

	American Indian/Alaska Native			Two or More Races			Pacific Islander			Total
	F	M	Total	F	M	Total	F	M	Total	
2006-07	2.7%	2.6%	2.6%	2.0%	2.5%	2.3%				3.3%
2007-08	2.5%	1.8%	2.1%	1.8%	1.9%	1.8%				2.6%
2008-09	1.9%	2.6%	2.3%	1.4%	1.7%	1.6%				2.3%
2009-10	2.1%	2.4%	2.2%	1.1%	1.7%	1.4%				2.0%
2010-11	1.0%	2.0%	1.5%	1.1%	1.5%	1.3%	0.5%	2.8%	1.7%	1.9%

Table 8: Dropout Withdrawal Codes and Definitions

DNE - Any PK-12 student who was expected to attend a school but did not enter as expected for unknown reasons
W05 - Any student age 16 or older who leaves school voluntarily with no intention of returning
W13 - Any PK-12 student withdrawn from school due to court action
W15 - Any PK-12 student who is withdrawn from school due to nonattendance
W18 - Any PK-12 student who withdraws from school due to medical reasons
W21 - Any PK-12 student who is withdrawn from school due to being expelled
W22 - Any PK-12 student whose whereabouts is unknown
W23 – Any PK-12 student who withdraws from school for any reason other than W01 - W22 or W24 – W27

Table 9: NGA and Florida Graduation Rates, by District 2010-11*

	District	NGA	Florida
01	Alachua	77.9%	78.1%
02	Baker	80.2%	82.8%
03	Bay	80.4%	81.6%
04	Bradford	71.6%	73.3%
05	Brevard	92.5%	93.2%
06	Broward	76.5%	76.9%
07	Calhoun	88.8%	90.2%
08	Charlotte	78.6%	80.2%
09	Citrus	83.7%	85.1%
10	Clay	82.9%	89.6%
11	Collier	80.1%	81.3%
12	Columbia	86.8%	87.2%
13	Dade	77.7%	78.1%
14	DeSoto	72.9%	78.2%
15	Dixie	64.7%	64.7%
16	Duval	71.2%	74.1%
17	Escambia	76.2%	76.9%
18	Flagler	83.3%	83.3%
19	Franklin	68.1%	72.5%
20	Gadsden	66.0%	67.6%
21	Gilchrist	92.4%	95.8%
22	Glades	57.9%	59.2%
23	Gulf	95.7%	95.8%
24	Hamilton	67.2%	68.6%
25	Hardee	80.6%	80.8%
26	Hendry	76.6%	77.5%
27	Hernando	80.4%	85.1%
28	Highlands	73.4%	74.6%
29	Hillsborough	84.3%	85.1%
30	Holmes	77.5%	78.8%
31	Indian River	86.6%	89.3%
32	Jackson	74.0%	80.1%
33	Jefferson	51.6%	58.0%
34	Lafayette	79.1%	79.1%
35	Lake	82.2%	83.2%
36	Lee	77.3%	77.5%
37	Leon	84.8%	85.8%
38	Levy	73.9%	73.9%
39	Liberty	64.7%	84.0%
40	Madison	67.6%	79.3%
41	Manatee	72.5%	74.6%
42	Marion	86.3%	87.9%
43	Martin	95.2%	95.7%
44	Monroe	76.3%	82.2%
45	Nassau	93.8%	95.1%
46	Okaloosa	87.7%	90.7%
47	Okeechobee	64.9%	68.9%
48	Orange	80.0%	80.3%
49	Osceola	82.6%	82.7%
50	Palm Beach	79.1%	79.8%
51	Pasco	85.5%	88.5%
52	Pinellas	80.1%	81.1%
53	Polk	73.9%	74.8%
54	Putnam	75.5%	78.4%
55	St. Johns	92.2%	93.3%
56	St. Lucie	78.7%	78.7%
57	Santa Rosa	89.1%	89.7%
58	Sarasota	83.5%	85.4%
59	Seminole	93.3%	93.4%
60	Sumter	85.7%	85.9%
61	Suwannee	65.4%	68.5%
62	Taylor	76.5%	77.8%
63	Union	92.7%	93.2%
64	Volusia	77.9%	78.3%
65	Wakulla	88.3%	89.3%
66	Walton	82.2%	82.4%
67	Washington	82.2%	83.5%
68	Deaf/Blind	84.5%	84.5%
69	Dozier/Okee	9.6%	77.9%
72	FAU	100.0%	100.0%
73	FSU	98.5%	98.5%
74	FAMU	95.1%	95.1%
75	UF	95.6%	95.6%
	FLORIDA	80.1%	81.2%

*Source: 2010-11 Florida Department of Education (FL DOE) cohort graduation data as of 11/3/11.

A pound sign (#) replaces data when the cohort is fewer than ten students. A blank cell indicates no students in the cohort.

Table 10: NGA Graduation Rates, 2006-07 through 2010-11*

	District	2006-07	2007-08	2008-09	2009-10	2010-11
01	Alachua	65.2%	67.6%	66.5%	76.4%	77.9%
02	Baker	76.3%	74.9%	85.3%	75.9%	80.2%
03	Bay	76.8%	76.1%	77.1%	81.1%	80.4%
04	Bradford	68.7%	70.3%	72.1%	63.6%	71.6%
05	Brevard	91.2%	92.5%	94.7%	95.3%	92.5%
06	Broward	66.3%	69.7%	73.9%	77.7%	76.5%
07	Calhoun	80.4%	92.1%	91.6%	88.2%	88.8%
08	Charlotte	75.9%	78.5%	77.0%	79.3%	78.6%
09	Citrus	74.3%	75.7%	81.8%	82.9%	83.7%
10	Clay	68.6%	70.5%	75.3%	78.4%	82.9%
11	Collier	71.9%	74.5%	77.2%	79.4%	80.1%
12	Columbia	67.2%	73.0%	82.0%	87.0%	86.8%
13	Dade	63.4%	65.4%	68.5%	72.1%	77.7%
14	DeSoto	62.8%	61.2%	64.7%	61.0%	72.9%
15	Dixie	75.0%	76.6%	74.0%	66.4%	64.7%
16	Duval	59.8%	61.3%	64.5%	66.6%	71.2%
17	Escambia	74.0%	74.5%	77.0%	77.9%	76.2%
18	Flagler	77.1%	80.9%	81.3%	83.5%	83.3%
19	Franklin	55.0%	54.0%	77.9%	78.7%	68.1%
20	Gadsden	46.6%	52.5%	60.3%	58.1%	66.0%
21	Gilchrist	84.0%	90.2%	94.7%	92.1%	92.4%
22	Glades	50.6%	35.6%	60.0%	63.6%	57.9%
23	Gulf	85.1%	89.0%	89.4%	95.5%	95.7%
24	Hamilton	50.4%	56.4%	58.6%	63.0%	67.2%
25	Hardee	72.1%	65.6%	71.9%	75.1%	80.6%
26	Hendry	65.0%	72.5%	73.5%	81.4%	76.6%
27	Hernando	72.8%	74.3%	75.4%	79.0%	80.4%
28	Highlands	69.3%	67.4%	73.3%	73.4%	73.4%
29	Hillsborough	76.3%	77.0%	82.2%	82.3%	84.3%
30	Holmes	70.6%	77.0%	80.3%	80.6%	77.5%
31	Indian River	78.7%	80.6%	82.1%	82.1%	86.6%
32	Jackson	80.1%	83.6%	80.8%	81.5%	74.0%
33	Jefferson	58.1%	47.3%	53.8%	50.8%	51.6%
34	Lafayette	77.8%	92.0%	79.7%	88.3%	79.1%
35	Lake	69.5%	75.0%	77.0%	80.8%	82.2%
36	Lee	70.6%	76.9%	77.6%	80.3%	77.3%
37	Leon	72.7%	73.5%	74.3%	77.6%	84.8%
38	Levy	64.3%	67.3%	67.0%	70.7%	73.9%
39	Liberty	57.9%	69.2%	74.4%	75.3%	64.7%
40	Madison	59.6%	61.5%	73.3%	65.0%	67.6%
41	Manatee	73.4%	73.3%	74.5%	76.4%	72.5%
42	Marion	65.4%	67.1%	73.7%	77.8%	86.3%
43	Martin	88.9%	90.3%	92.2%	89.8%	95.2%
44	Monroe	76.5%	78.5%	81.5%	85.4%	76.3%
45	Nassau	70.2%	70.9%	76.3%	89.5%	93.8%
46	Okaloosa	80.9%	87.5%	88.7%	89.0%	87.7%
47	Okeechobee	57.9%	62.4%	64.4%	64.9%	64.9%
48	Orange	69.7%	73.6%	75.9%	79.0%	80.0%
49	Osceola	65.5%	69.3%	78.4%	83.3%	82.6%
50	Palm Beach	70.2%	73.6%	77.7%	81.9%	79.1%
51	Pasco	67.8%	73.4%	77.8%	81.9%	85.5%
52	Pinellas	66.3%	71.4%	77.2%	77.7%	80.1%
53	Polk	67.2%	69.9%	71.6%	73.2%	73.9%
54	Putnam	71.0%	71.1%	70.4%	74.6%	75.5%
55	St. Johns	76.7%	87.1%	89.3%	92.1%	92.2%
56	St. Lucie	75.3%	77.9%	81.0%	79.1%	78.7%
57	Santa Rosa	85.9%	86.4%	88.1%	88.3%	89.1%
58	Sarasota	78.8%	81.5%	80.5%	84.3%	83.5%
59	Seminole	85.8%	90.2%	92.0%	93.8%	93.3%
60	Sumter	77.6%	81.6%	83.2%	86.9%	85.7%
61	Suwannee	67.9%	63.2%	61.7%	62.7%	65.4%
62	Taylor	74.7%	70.6%	72.9%	73.7%	76.5%
63	Union	81.7%	71.4%	80.7%	76.4%	92.7%
64	Volusia	80.9%	80.3%	80.5%	81.2%	77.9%
65	Wakulla	78.5%	78.1%	80.0%	82.7%	88.3%
66	Walton	72.0%	76.5%	79.4%	83.2%	82.2%
67	Washington	70.4%	82.7%	84.5%	84.4%	82.2%
68	Deaf/Blind	89.5%	95.1%	91.8%	88.8%	84.5%
69	Dozier/Okee	5.6%	4.9%	9.1%	#	9.6%
72	FAU	100.0%	100.0%	100.0%	100.0%	100.0%
73	FSU	95.7%	93.5%	97.8%	97.9%	98.5%
74	FAMU	78.1%	67.5%	93.5%	94.6%	95.1%
75	UF	93.8%	95.9%	95.6%	96.5%	95.6%
	FLORIDA	70.3%	73.1%	76.3%	79.0%	80.1%

*Source: 2010-11 Florida Department of Education (FL DOE) cohort graduation data as of 11/03/11.

A pound sign (#) replaces data when the cohort is fewer than ten students. A blank cell indicates no students in the cohort.

Table 11: Graduation Rates, Florida's Calculation, 2006-07 through 2010-11*

	District	2006-07	2007-08	2008-09	2009-10	2010-11
01	Alachua	68.2%	68.3%	66.7%	76.6%	78.1%
02	Baker	77.9%	77.5%	87.5%	77.3%	82.8%
03	Bay	78.7%	78.5%	79.4%	81.9%	81.6%
04	Bradford	70.7%	75.4%	78.4%	71.1%	73.3%
05	Brevard	92.1%	93.3%	95.3%	95.8%	93.2%
06	Broward	66.3%	68.8%	74.2%	77.9%	76.9%
07	Calhoun	82.5%	93.3%	92.2%	89.0%	90.2%
08	Charlotte	81.6%	84.6%	84.3%	82.4%	80.2%
09	Citrus	76.1%	77.8%	84.6%	85.6%	85.1%
10	Clay	75.3%	77.6%	81.7%	85.9%	89.6%
11	Collier	73.6%	75.8%	78.7%	80.4%	81.3%
12	Columbia	74.1%	77.6%	87.8%	88.5%	87.2%
13	Dade	63.9%	65.8%	68.9%	72.6%	78.1%
14	DeSoto	70.5%	66.5%	72.0%	69.0%	78.2%
15	Dixie	75.3%	76.6%	74.0%	66.4%	64.7%
16	Duval	64.3%	65.9%	69.6%	73.1%	74.1%
17	Escambia	75.2%	75.7%	77.8%	78.8%	76.9%
18	Flagler	77.1%	80.9%	81.3%	83.5%	83.3%
19	Franklin	56.5%	57.8%	86.0%	81.6%	72.5%
20	Gadsden	53.3%	56.1%	64.2%	63.4%	67.6%
21	Gilchrist	86.0%	92.1%	96.5%	94.9%	95.8%
22	Glades	62.3%	43.7%	63.0%	66.2%	59.2%
23	Gulf	85.1%	89.1%	89.5%	96.2%	95.8%
24	Hamilton	68.1%	60.0%	58.6%	65.5%	68.6%
25	Hardee	72.7%	66.5%	72.6%	76.0%	80.8%
26	Hendry	68.3%	74.0%	76.5%	81.9%	77.5%
27	Hernando	75.1%	76.9%	78.5%	84.9%	85.1%
28	Highlands	73.0%	71.2%	76.3%	78.1%	74.6%
29	Hillsborough	79.1%	80.0%	84.6%	84.4%	85.1%
30	Holmes	76.2%	84.3%	87.3%	81.9%	78.8%
31	Indian River	82.9%	83.5%	86.1%	87.2%	89.3%
32	Jackson	81.7%	85.7%	85.0%	87.9%	80.1%
33	Jefferson	64.2%	57.5%	62.8%	51.6%	58.0%
34	Lafayette	79.4%	92.0%	79.7%	88.3%	79.1%
35	Lake	73.5%	79.3%	80.8%	82.3%	83.2%
36	Lee	71.8%	77.8%	78.3%	80.6%	77.5%
37	Leon	79.0%	81.2%	81.0%	80.2%	85.8%
38	Levy	66.4%	72.1%	67.9%	71.4%	73.9%
39	Liberty	90.7%	95.9%	93.8%	91.2%	84.0%
40	Madison	66.9%	69.5%	80.4%	79.7%	79.3%
41	Manatee	78.7%	79.3%	79.4%	79.2%	74.6%
42	Marion	74.9%	73.8%	78.9%	79.5%	87.9%
43	Martin	91.2%	91.9%	93.9%	90.4%	95.7%
44	Monroe	83.6%	85.5%	87.4%	86.3%	82.2%
45	Nassau	80.7%	81.1%	84.8%	91.8%	95.1%
46	Okaloosa	84.7%	90.5%	91.7%	91.9%	90.7%
47	Okeechobee	64.0%	70.7%	69.3%	71.7%	68.9%
48	Orange	71.7%	75.6%	77.4%	79.6%	80.3%
49	Osceola	66.6%	67.5%	79.2%	83.5%	82.7%
50	Palm Beach	71.8%	75.6%	80.1%	82.9%	79.8%
51	Pasco	73.7%	79.5%	83.5%	87.2%	88.5%
52	Pinellas	67.3%	74.4%	80.6%	78.8%	81.1%
53	Polk	70.6%	73.6%	74.7%	75.9%	74.8%
54	Putnam	78.6%	78.0%	78.4%	82.0%	78.4%
55	St. Johns	78.3%	89.4%	90.8%	92.6%	93.3%
56	St. Lucie	75.4%	77.9%	81.1%	79.1%	78.7%
57	Santa Rosa	86.8%	87.6%	89.0%	88.8%	89.7%
58	Sarasota	83.5%	86.0%	85.1%	86.1%	85.4%
59	Seminole	86.7%	91.1%	93.0%	94.2%	93.4%
60	Sumter	81.1%	83.5%	85.0%	87.7%	85.9%
61	Suwannee	74.4%	71.6%	72.4%	74.5%	68.5%
62	Taylor	77.4%	74.0%	75.1%	74.7%	77.8%
63	Union	81.7%	71.4%	80.7%	76.4%	93.2%
64	Volusia	82.6%	81.9%	82.0%	81.9%	78.3%
65	Wakulla	82.5%	81.6%	84.0%	84.9%	89.3%
66	Walton	74.2%	81.5%	82.3%	85.1%	82.4%
67	Washington	71.5%	83.1%	85.0%	84.4%	83.5%
68	Deaf/Blind	89.5%	95.1%	91.8%	88.8%	84.5%
69	Dozier/Okee	55.6%	59.5%	72.7%	60.0%	77.9%
72	FAU	100.0%	100.0%	100.0%	100.0%	100.0%
73	FSU	97.9%	98.6%	98.5%	97.9%	98.5%
74	FAMU	78.1%	70.0%	93.5%	94.6%	95.1%
75	UF	93.8%	95.9%	95.6%	96.5%	95.6%
	FLORIDA	72.4%	75.4%	78.6%	80.7%	81.2%

*Source: 2010-11 Florida Department of Education (FL DOE) cohort graduation data as of 11/03/11.

A pound sign (#) replaces data when the cohort is fewer than ten students. A blank cell indicates no students in the cohort.

Table 12: NGA Graduation Rates by Race/Ethnicity, 2010-11*

District	White	Black or African American	Hispanic/Latino	Asian	American Indian/Alaska Native	Two or More Races	Pacific Islander
01 Alachua	85.2%	65.2%	79.3%	94.0%	#	76.4%	
02 Baker	83.3%	64.3%	#	#		#	
03 Bay	84.3%	63.2%	85.5%	86.8%	63.6%	62.2%	
04 Bradford	74.0%	66.7%	#	#			
05 Brevard	93.9%	87.0%	89.7%	95.9%	87.5%	92.1%	
06 Broward	86.9%	65.5%	79.4%	93.5%	65.0%	81.5%	#
07 Calhoun	87.8%	90.6%	#			#	
08 Charlotte	80.4%	72.0%	67.6%	75.0%	#	83.0%	
09 Citrus	84.0%	72.7%	82.5%	100.0%	#	87.8%	
10 Clay	85.9%	71.2%	72.6%	94.5%	84.6%	98.4%	
11 Collier	88.8%	71.7%	71.6%	88.9%	#	79.2%	
12 Columbia	88.3%	78.2%	96.6%	#	#	100.0%	
13 Dade	87.0%	69.3%	79.4%	87.3%	78.1%	89.0%	
14 DeSoto	76.8%	58.7%	73.8%	#		#	
15 Dixie	62.5%	84.6%	#				
16 Duval	78.3%	63.4%	72.4%	85.2%	80.0%	73.0%	
17 Escambia	85.0%	62.7%	68.8%	89.4%	58.8%	82.0%	#
18 Flagler	87.0%	71.0%	80.5%	92.6%	#	76.9%	
19 Franklin	65.4%	76.9%	#			#	
20 Gadsden	#	66.3%	61.7%	#		#	
21 Gilchrist	93.3%	#	#				
22 Glades	59.4%	52.2%	65.0%	#			
23 Gulf	97.1%	89.7%	#			#	
24 Hamilton	78.3%	55.2%	71.4%	#		#	
25 Hardee	85.3%	74.1%	77.6%	#			
26 Hendry	86.0%	66.2%	73.0%	#		78.6%	
27 Hernando	82.1%	67.2%	76.6%	87.0%	#	83.0%	
28 Highlands	79.9%	64.9%	67.6%	80.0%	#	65.0%	
29 Hillsborough	91.0%	73.0%	79.8%	90.8%	91.7%	90.1%	#
30 Holmes	78.4%	#	#	#		#	
31 Indian River	90.0%	77.2%	78.8%	87.0%	#	95.5%	
32 Jackson	78.7%	66.4%	50.0%	#	#	#	
33 Jefferson	30.8%	58.0%		#			
34 Lafayette	88.6%	#	53.8%		#	#	
35 Lake	85.5%	76.9%	74.4%	86.4%	72.2%	85.7%	
36 Lee	83.5%	63.2%	71.7%	88.5%	62.5%	81.7%	#
37 Leon	92.3%	72.7%	79.6%	90.8%	#	93.6%	
38 Levy	76.7%	65.3%	71.4%	#	#	#	
39 Liberty	68.4%	46.7%	#		#	#	
40 Madison	70.2%	66.9%	#	#		#	
41 Manatee	80.9%	59.1%	56.6%	78.2%	#	70.0%	
42 Marion	89.6%	78.7%	79.8%	91.8%	93.3%	95.3%	
43 Martin	97.1%	83.8%	90.1%	100.0%	#	100.0%	
44 Monroe	83.0%	64.7%	66.0%	81.8%	#	56.0%	
45 Nassau	94.1%	90.3%	93.8%	#	#	100.0%	
46 Okaloosa	89.4%	77.0%	78.7%	93.0%	84.6%	90.0%	
47 Okeechobee	69.2%	38.1%	67.8%	#	50.0%	#	
48 Orange	89.3%	69.0%	77.9%	91.8%	83.3%	84.4%	#
49 Osceola	91.5%	81.7%	76.9%	86.7%	81.8%	83.7%	
50 Palm Beach	89.8%	66.5%	75.2%	86.9%	74.0%	84.7%	#
51 Pasco	86.6%	81.1%	81.6%	87.9%	83.3%	85.5%	#
52 Pinellas	85.5%	63.8%	69.8%	87.2%	72.2%	78.3%	
53 Polk	79.1%	65.8%	66.8%	85.2%	72.7%	84.2%	
54 Putnam	77.2%	73.6%	74.6%	#	#	61.5%	
55 St. Johns	94.3%	75.0%	84.3%	93.9%	#	83.3%	
56 St. Lucie	88.3%	66.4%	78.5%	89.7%	#	83.7%	
57 Santa Rosa	89.9%	83.3%	83.3%	89.3%	90.9%	85.5%	
58 Sarasota	86.8%	73.0%	66.2%	88.0%	#	86.7%	
59 Seminole	96.2%	83.6%	88.4%	94.7%	100.0%	97.9%	
60 Sumter	87.9%	76.3%	79.5%	#		#	
61 Suwannee	67.9%	55.9%	56.5%	#	#	#	
62 Taylor	77.8%	79.2%	#	#	#	#	
63 Union	92.1%	94.7%	#			#	
64 Volusia	82.5%	67.8%	65.7%	82.8%	#	78.0%	
65 Wakulla	89.3%	79.2%	#	#	#	#	
66 Walton	84.3%	70.6%	60.0%	#	#	#	
67 Washington	84.2%	70.3%	#		#	#	
68 Deaf/Blind	86.7%	76.5%	86.4%				
69 Dozier/Okee	6.7%	12.1%	#				
72 FAU	100.0%	#	#	#		#	
73 FSU	100.0%	94.7%	100.0%	#	#	#	
74 FAMU		95.0%				#	
75 UF	96.7%	94.4%	100.0%	#		#	
FLORIDA	86.8%	68.4%	77.3%	89.6%	78.4%	84.5%	75.0%

*Source: 2010-11 Florida Department of Education (FL DOE) cohort graduation data as of 11/03/11.
A pound sign (#) replaces data when the cohort is fewer than ten students. A blank cell indicates no students in the cohort.

Table 13: Florida Graduation Rates by Race/Ethnicity, 2010-11*

District	White	Black or African American	Hispanic/Latino	Asian	American Indian/Alaska Native	Two or More Races	Pacific Islander
01 Alachua	85.5%	65.3%	79.5%	94.0%	#	76.4%	
02 Baker	85.9%	64.3%	#	#		#	
03 Bay	85.6%	63.9%	85.5%	86.8%	63.6%	65.8%	
04 Bradford	75.8%	68.1%	#	#			
05 Brevard	94.3%	88.3%	91.1%	96.9%	89.5%	92.2%	
06 Broward	87.2%	65.8%	79.7%	93.5%	67.5%	82.2%	#
07 Calhoun	89.6%	90.6%	#			#	
08 Charlotte	81.5%	74.0%	73.6%	78.6%	#	83.3%	
09 Citrus	85.2%	77.6%	84.6%	100.0%	#	87.8%	
10 Clay	91.6%	79.5%	88.3%	94.5%	84.6%	98.4%	
11 Collier	90.5%	72.2%	72.4%	88.9%	#	79.2%	
12 Columbia	88.7%	78.2%	96.6%	#	#	100.0%	
13 Dade	87.7%	69.5%	79.8%	87.3%	78.1%	90.0%	
14 DeSoto	83.0%	68.1%	75.7%	#		#	
15 Dixie	62.5%	84.6%	#				
16 Duval	82.1%	65.7%	75.7%	86.3%	80.0%	75.6%	
17 Escambia	85.7%	62.9%	70.1%	89.5%	58.8%	82.5%	#
18 Flagler	87.0%	71.0%	80.5%	92.6%	#	76.9%	
19 Franklin	69.4%	84.6%	#			#	
20 Gadsden	#	66.7%	70.8%	#		#	
21 Gilchrist	96.3%	#	#				
22 Glades	59.4%	52.2%	65.0%	#			
23 Gulf	97.2%	89.7%	#			#	
24 Hamilton	78.3%	56.9%	78.6%	#		#	
25 Hardee	85.5%	74.1%	77.9%	#			
26 Hendry	86.9%	66.2%	73.7%	#	#	78.6%	
27 Hernando	86.7%	69.6%	83.7%	91.3%	#	87.5%	
28 Highlands	81.3%	65.9%	68.3%	80.0%	#	65.0%	
29 Hillsborough	91.7%	74.2%	80.8%	91.1%	91.9%	90.5%	#
30 Holmes	79.9%	#	#	#		#	
31 Indian River	93.0%	79.8%	80.8%	87.5%	#	95.5%	
32 Jackson	85.1%	70.6%	70.0%	#	#	#	
33 Jefferson	42.9%	63.0%		#			
34 Lafayette	88.6%	#	53.8%		#	#	
35 Lake	86.5%	78.0%	74.8%	86.4%	72.2%	88.1%	
36 Lee	83.7%	63.3%	71.8%	88.5%	64.0%	81.8%	#
37 Leon	93.0%	74.2%	82.7%	90.9%	#	93.9%	
38 Levy	76.7%	65.3%	71.4%	#	#	#	
39 Liberty	85.5%	80.0%	#		#	#	
40 Madison	84.9%	75.4%	#	#		#	
41 Manatee	82.9%	62.0%	58.7%	78.2%	#	71.7%	
42 Marion	91.1%	79.8%	82.0%	91.8%	93.3%	96.6%	
43 Martin	97.4%	86.2%	90.2%	100.0%	#	100.0%	
44 Monroe	89.5%	66.2%	70.3%	83.3%	#	75.0%	
45 Nassau	94.7%	97.3%	100.0%	#	#	100.0%	
46 Okaloosa	91.6%	85.2%	85.4%	93.0%	92.3%	91.3%	
47 Okeechobee	72.8%	46.0%	71.1%	#	54.5%	#	
48 Orange	89.6%	69.4%	78.0%	91.9%	83.3%	85.4%	#
49 Osceola	91.7%	81.9%	76.9%	86.7%	81.8%	83.8%	
50 Palm Beach	90.2%	67.3%	76.1%	87.9%	74.4%	85.5%	#
51 Pasco	89.9%	82.2%	83.7%	88.3%	84.6%	88.0%	#
52 Pinellas	86.3%	64.7%	71.3%	87.4%	73.7%	80.6%	#
53 Polk	80.1%	66.6%	67.3%	85.2%	72.7%	84.5%	
54 Putnam	81.1%	74.9%	76.1%	#	#	61.5%	
55 St. Johns	95.3%	78.0%	85.2%	93.9%	#	87.5%	
56 St. Lucie	88.3%	66.4%	78.5%	89.7%	#	83.7%	
57 Santa Rosa	90.4%	84.5%	83.3%	89.3%	90.9%	85.5%	
58 Sarasota	88.7%	74.2%	67.7%	88.0%	#	90.3%	
59 Seminole	96.3%	83.6%	88.7%	95.2%	100.0%	97.9%	
60 Sumter	88.2%	76.3%	79.5%	#		#	
61 Suwannee	71.6%	57.6%	56.5%	#	#	#	
62 Taylor	79.5%	79.2%	#	#	#	#	
63 Union	92.7%	95.0%	#			#	
64 Volusia	82.8%	67.8%	66.2%	83.1%	#	78.3%	
65 Wakulla	90.4%	79.2%	#	#	#	#	
66 Walton	84.3%	73.5%	60.0%	#	#	#	
67 Washington	85.7%	70.3%	#		#	#	
68 Deaf/Blind	86.7%	76.5%	86.4%				
69 Dozier/Okee	100.0%	68.3%	#				
72 FAU	100.0%	#	#	#		#	
73 FSU	100.0%	94.7%	100.0%	#	#	#	
74 FAMU		95.0%				#	
75 UF	96.7%	94.4%	100.0%	#		#	
FLORIDA	88.1%	69.4%	78.1%	89.9%	79.5%	85.6%	78.6%

*Source: 2010-11 Florida Department of Education (FL DOE) cohort graduation data as of 11/03/11.
A pound sign (#) replaces data when the cohort is fewer than ten students. A blank cell indicates no students in the cohort.

Table 14: 9th-12th Grade, Single-Year Dropout Rates by Race/Ethnicity, 2010-11*

District	White	Black or African American	Hispanic/Latino	Asian	American Indian/Alaska Native	Two or More Races	Pacific Islander
01 Alachua	1.8%	3.6%	1.9%	1.3%	6.3%	2.7%	0.0%
02 Baker	2.2%	4.3%	3.8%	#	#	0.0%	
03 Bay	1.0%	2.1%	0.6%	0.6%	2.2%	1.0%	
04 Bradford	3.3%	5.7%	7.7%	#	#	#	
05 Brevard	0.6%	0.9%	0.6%	0.5%	0.0%	0.8%	#
06 Broward	0.8%	2.1%	0.8%	0.4%	1.3%	1.0%	0.0%
07 Calhoun	3.6%	1.1%	6.3%	#	#	3.6%	
08 Charlotte	2.4%	3.1%	2.1%	0.0%	#	2.0%	#
09 Citrus	1.2%	1.7%	1.1%	0.0%	0.0%	0.0%	#
10 Clay	1.0%	1.1%	0.4%	0.3%	12.5%	0.3%	0.0%
11 Collier	1.6%	2.0%	2.4%	0.0%	1.3%	1.1%	0.0%
12 Columbia	0.5%	0.5%	1.6%	0.0%	#	0.0%	#
13 Dade	2.6%	5.2%	3.0%	0.8%	4.4%	2.9%	0.0%
14 DeSoto	1.8%	2.0%	2.8%	#	#	5.0%	
15 Dixie	1.9%	0.0%	0.0%		#	0.0%	
16 Duval	2.1%	2.7%	2.3%	1.3%	0.0%	2.5%	0.0%
17 Escambia	1.6%	4.4%	2.4%	0.5%	0.7%	1.4%	3.1%
18 Flagler	1.8%	1.8%	0.7%	3.4%	0.0%	2.5%	#
19 Franklin	0.9%	0.0%	#			#	
20 Gadsden	6.8%	2.5%	2.9%	#		0.0%	
21 Gilchrist	0.3%	0.0%	0.0%	#	#	#	
22 Glades	2.1%	1.2%	4.2%	#	#	#	
23 Gulf	0.0%	1.0%	0.0%	#	#	0.0%	
24 Hamilton	2.3%	2.5%	5.7%	#	#	#	
25 Hardee	2.1%	2.9%	2.9%	0.0%	#	#	
26 Hendry	3.1%	2.1%	3.2%	9.1%	#	0.0%	
27 Hernando	3.0%	4.7%	3.0%	0.9%	0.0%	1.6%	#
28 Highlands	7.3%	10.0%	6.1%	2.0%	4.2%	2.3%	#
29 Hillsborough	0.5%	1.3%	0.9%	0.5%	0.0%	0.4%	0.0%
30 Holmes	2.8%	0.0%	3.8%	#	#	6.7%	#
31 Indian River	0.3%	0.7%	0.0%	0.0%	0.0%	0.0%	#
32 Jackson	1.2%	1.4%	0.0%	0.0%	0.0%	1.7%	#
33 Jefferson	3.9%	3.2%	0.0%	#		#	
34 Lafayette	1.8%	0.0%	0.0%	#	#	#	
35 Lake	2.2%	2.4%	2.6%	1.9%	4.5%	1.4%	0.0%
36 Lee	1.7%	2.8%	1.8%	0.3%	5.6%	0.9%	5.0%
37 Leon	1.1%	5.0%	1.9%	0.7%	0.0%	1.4%	#
38 Levy	2.8%	1.8%	0.0%	0.0%	#	0.0%	#
39 Liberty	0.3%	0.7%	0.0%	#	#	#	#
40 Madison	0.2%	1.7%	3.3%	#	#	#	
41 Manatee	2.3%	4.5%	4.2%	0.9%	0.0%	2.7%	#
42 Marion	0.7%	1.6%	0.6%	0.0%	0.0%	0.3%	0.0%
43 Martin	0.3%	1.6%	1.3%	0.0%	4.3%	1.5%	
44 Monroe	1.2%	3.2%	3.4%	0.0%	#	0.0%	#
45 Nassau	0.4%	0.5%	0.0%	0.0%	0.0%	0.9%	#
46 Okaloosa	0.2%	0.4%	0.0%	0.4%	0.0%	0.0%	0.0%
47 Okeechobee	5.7%	4.9%	4.9%	0.0%	6.0%	3.8%	#
48 Orange	0.6%	2.2%	1.3%	0.3%	0.0%	0.6%	0.0%
49 Osceola	1.2%	1.8%	1.7%	0.6%	0.0%	1.1%	6.9%
50 Palm Beach	1.5%	4.1%	2.5%	1.0%	2.1%	3.0%	3.0%
51 Pasco	1.2%	0.9%	0.7%	0.2%	0.0%	0.5%	0.0%
52 Pinellas	1.3%	3.1%	2.7%	0.8%	1.6%	2.2%	2.4%
53 Polk	4.0%	4.9%	4.4%	1.4%	3.0%	2.9%	3.0%
54 Putnam	2.3%	3.0%	3.8%	0.0%	#	2.4%	#
55 St. Johns	0.7%	2.1%	0.8%	0.0%	7.4%	0.0%	#
56 St. Lucie	1.6%	3.7%	1.6%	1.3%	1.5%	0.9%	0.0%
57 Santa Rosa	0.9%	2.8%	0.4%	0.7%	0.0%	1.5%	0.0%
58 Sarasota	1.8%	3.0%	2.2%	0.0%	1.6%	1.5%	9.1%
59 Seminole	0.2%	1.2%	0.5%	0.0%	0.0%	0.1%	0.0%
60 Sumter	2.2%	2.2%	3.1%	0.0%	#	0.0%	
61 Suwannee	1.3%	1.1%	2.5%	0.0%	#	0.0%	#
62 Taylor	3.6%	6.9%	8.0%	#	#	0.0%	
63 Union	1.5%	1.5%	5.6%	#	#	14.3%	
64 Volusia	1.1%	1.4%	1.2%	0.8%	0.0%	1.0%	0.0%
65 Wakulla	1.8%	3.1%	0.0%	#	#	2.3%	#
66 Walton	2.3%	2.5%	0.6%	0.0%	0.0%	2.7%	#
67 Washington	2.8%	1.7%	0.0%	#	#	5.3%	#
68 Deaf/Blind	0.0%	0.0%	0.0%	#	#	0.0%	
69 Dozier/Okee	1.6%	0.0%	0.0%			#	
72 FAU	0.0%	0.0%	0.0%	0.0%	#	#	
73 FSU	0.0%	0.0%	0.0%	0.0%	#	0.0%	
74 FAMU	#	0.0%	#				
75 UF	0.0%	0.0%	0.0%	#	#	0.0%	
FLORIDA	1.4%	3.0%	2.1%	0.6%	1.5%	1.3%	1.7%

*Source: 2010-11 Florida Department of Education (FL DOE) dropout data as of 11/16/11.

A pound sign (#) replaces data when the subgroup population is fewer than ten students. A blank cell indicates no students in the subgroup population.

Table 15: 9th-12th Grade, Single-Year Dropout Rates by District, 2006-07 through 2010-11

	District	2006-07	2007-08	2008-09	2009-10	2010-11*
01	Alachua	6.6%	3.6%	2.6%	2.2%	2.4%
02	Baker	2.8%	1.8%	2.0%	3.8%	2.5%
03	Bay	2.5%	1.7%	0.8%	1.4%	1.1%
04	Bradford	5.1%	5.0%	3.1%	5.1%	4.0%
05	Brevard	0.9%	0.7%	0.6%	0.5%	0.7%
06	Broward	3.2%	2.0%	2.1%	1.6%	1.3%
07	Calhoun	3.2%	1.5%	0.6%	2.2%	3.3%
08	Charlotte	1.6%	1.5%	2.8%	3.1%	2.4%
09	Citrus	4.1%	1.7%	1.4%	1.2%	1.2%
10	Clay	2.3%	2.0%	1.2%	1.3%	1.0%
11	Collier	2.7%	2.5%	2.2%	2.0%	1.9%
12	Columbia	2.3%	0.6%	0.7%	0.6%	0.6%
13	Dade	5.8%	4.5%	3.9%	4.0%	3.5%
14	DeSoto	4.2%	3.4%	4.6%	5.2%	2.2%
15	Dixie	4.4%	4.3%	5.1%	4.2%	1.6%
16	Duval	5.2%	3.3%	4.8%	2.2%	2.3%
17	Escambia	3.3%	4.0%	2.1%	1.6%	2.5%
18	Flagler	2.5%	1.0%	2.2%	1.8%	1.7%
19	Franklin	6.7%	2.0%	5.4%	0.3%	0.8%
20	Gadsden	5.4%	1.1%	4.2%	1.6%	2.7%
21	Gilchrist	1.4%	0.7%	0.2%	0.2%	0.2%
22	Glades	13.0%	5.0%	3.8%	1.4%	2.4%
23	Gulf	0.9%	1.3%	1.4%	0.3%	0.2%
24	Hamilton	5.1%	4.4%	3.6%	4.4%	2.7%
25	Hardee	5.1%	6.4%	4.9%	3.3%	2.5%
26	Hendry	3.0%	4.0%	3.1%	3.5%	3.0%
27	Hernando	3.3%	2.8%	2.7%	2.6%	3.1%
28	Highlands	5.4%	4.2%	4.2%	3.2%	7.2%
29	Hillsborough	1.6%	1.8%	1.0%	0.7%	0.8%
30	Holmes	3.4%	2.4%	1.7%	2.2%	2.8%
31	Indian River	1.8%	1.3%	1.5%	1.7%	0.3%
32	Jackson	1.6%	1.4%	2.0%	1.8%	1.2%
33	Jefferson	7.9%	5.3%	1.8%	7.8%	3.2%
34	Lafayette	2.3%	2.8%	0.7%	0.3%	1.6%
35	Lake	4.5%	3.1%	2.9%	3.0%	2.3%
36	Lee	2.4%	1.8%	1.3%	1.3%	1.9%
37	Leon	3.6%	2.1%	3.0%	0.8%	2.7%
38	Levy	4.2%	2.9%	4.2%	5.5%	2.3%
39	Liberty	0.4%	0.0%	1.3%	1.8%	0.5%
40	Madison	5.5%	5.1%	2.4%	3.1%	1.2%
41	Manatee	1.3%	4.4%	3.6%	4.3%	3.1%
42	Marion	3.3%	3.1%	2.6%	0.5%	0.9%
43	Martin	0.6%	0.5%	0.7%	0.6%	0.6%
44	Monroe	1.2%	0.6%	0.6%	1.1%	2.0%
45	Nassau	4.2%	3.5%	2.1%	1.3%	0.4%
46	Okaloosa	1.8%	1.7%	1.0%	0.4%	0.2%
47	Okeechobee	5.3%	5.2%	3.9%	4.6%	5.3%
48	Orange	1.7%	1.5%	1.1%	0.7%	1.2%
49	Osceola	4.2%	2.7%	1.0%	1.4%	1.6%
50	Palm Beach	4.4%	3.9%	2.6%	2.8%	2.6%
51	Pasco	3.5%	2.1%	1.2%	1.1%	1.0%
52	Pinellas	3.4%	2.1%	2.1%	2.4%	1.8%
53	Polk	4.2%	3.8%	4.0%	4.1%	4.2%
54	Putnam	2.9%	5.7%	3.3%	3.9%	2.7%
55	St. Johns	1.8%	1.3%	1.1%	0.9%	0.8%
56	St. Lucie	2.0%	1.3%	1.4%	2.3%	2.2%
57	Santa Rosa	1.9%	1.9%	1.8%	0.9%	1.0%
58	Sarasota	2.7%	2.1%	1.8%	2.0%	1.9%
59	Seminole	1.5%	0.5%	0.4%	0.4%	0.4%
60	Sumter	2.7%	1.8%	3.3%	2.0%	2.2%
61	Suwannee	5.2%	6.8%	3.4%	2.7%	1.3%
62	Taylor	4.7%	4.0%	2.8%	3.5%	4.3%
63	Union	1.8%	1.2%	1.0%	1.5%	2.0%
64	Volusia	1.3%	1.0%	1.3%	1.1%	1.2%
65	Wakulla	2.7%	2.7%	2.9%	3.4%	1.9%
66	Walton	2.3%	1.8%	2.6%	1.3%	2.2%
67	Washington	1.6%	1.7%	1.2%	1.6%	2.5%
68	Deaf/Blind	0.0%	0.0%	0.0%	0.0%	0.0%
69	Dozier/Okee	2.9%	1.3%	1.4%	0.0%	0.3%
72	FAU	0.0%	0.0%	0.0%	0.0%	0.0%
73	FSU	0.0%	0.0%	0.0%	0.0%	0.0%
74	FAMU	0.0%	0.0%	0.0%	0.0%	0.0%
75	UF	0.2%	0.0%	0.2%	0.0%	0.0%
	FLORIDA	3.3%	2.6%	2.3%	2.0%	1.9%

*Source: 2010-11 Florida Department of Education (FL DOE) cohort graduation data as of 11/16/11.

Table 16: 9th through 12th Grade Cohort Graduates, Dropouts, and Non-Graduates, 2010-11*

	District	Adjusted Cohort Total	% Graduating	% Dropping Out	% Not Graduating
01	Alachua	2,093	77.9%	8.6%	13.5%
02	Baker	308	80.2%	8.4%	11.4%
03	Bay	1,738	80.4%	3.7%	15.8%
04	Bradford	257	71.6%	18.7%	9.7%
05	Brevard	4,990	92.5%	2.2%	5.3%
06	Broward	19,230	76.5%	3.3%	20.2%
07	Calhoun	160	88.8%	7.5%	3.8%
08	Charlotte	1,483	78.6%	7.3%	14.1%
09	Citrus	1,178	83.7%	4.0%	12.3%
10	Clay	3,017	82.9%	3.3%	13.9%
11	Collier	2,968	80.1%	5.3%	14.7%
12	Columbia	598	86.8%	3.2%	10.0%
13	Dade	24,632	77.7%	6.8%	15.4%
14	DeSoto	306	72.9%	12.1%	15.0%
15	Dixie	150	64.7%	14.7%	20.7%
16	Duval	7,884	71.2%	7.1%	21.7%
17	Escambia	2,630	76.2%	7.2%	16.6%
18	Flagler	878	83.3%	6.5%	10.3%
19	Franklin	94	68.1%	27.7%	4.3%
20	Gadsden	329	66.0%	4.3%	29.8%
21	Gilchrist	144	92.4%	1.4%	6.3%
22	Glades	76	57.9%	11.8%	30.3%
23	Gulf	139	95.7%	3.6%	0.7%
24	Hamilton	137	67.2%	15.3%	17.5%
25	Hardee	288	80.6%	8.3%	11.1%
26	Hendry	470	76.6%	11.9%	11.5%
27	Hernando	1,667	80.4%	11.4%	8.2%
28	Highlands	882	73.4%	12.1%	14.5%
29	Hillsborough	12,159	84.3%	4.0%	11.8%
30	Holmes	222	77.5%	13.5%	9.0%
31	Indian River	1,175	86.6%	1.4%	12.0%
32	Jackson	492	74.0%	8.7%	17.3%
33	Jefferson	64	51.6%	21.9%	26.6%
34	Lafayette	67	79.1%	7.5%	13.4%
35	Lake	2,806	82.2%	7.7%	10.0%
36	Lee	5,433	77.3%	4.5%	18.3%
37	Leon	2,059	84.8%	5.1%	10.1%
38	Levy	379	73.9%	8.7%	17.4%
39	Liberty	102	64.7%	8.8%	26.5%
40	Madison	210	67.6%	11.0%	21.4%
41	Manatee	3,106	72.5%	11.5%	16.0%
42	Marion	2,717	86.3%	3.8%	9.9%
43	Martin	1,343	95.2%	1.4%	3.4%
44	Monroe	658	76.3%	4.0%	19.8%
45	Nassau	780	93.8%	3.5%	2.7%
46	Okaloosa	2,057	87.7%	0.9%	11.5%
47	Okeechobee	510	64.9%	18.0%	17.1%
48	Orange	12,121	80.0%	2.9%	17.1%
49	Osceola	3,738	82.6%	2.9%	14.5%
50	Palm Beach	13,085	79.1%	8.7%	12.2%
51	Pasco	4,229	85.5%	3.4%	11.1%
52	Pinellas	7,432	80.1%	5.8%	14.1%
53	Polk	6,244	73.9%	9.0%	17.1%
54	Putnam	736	75.5%	14.5%	9.9%
55	St. Johns	2,108	92.2%	3.0%	4.8%
56	St. Lucie	2,521	78.7%	5.0%	16.3%
57	Santa Rosa	1,765	89.1%	2.8%	8.0%
58	Sarasota	2,935	83.5%	5.9%	10.6%
59	Seminole	4,578	93.3%	1.2%	5.6%
60	Sumter	488	85.7%	6.8%	7.6%
61	Suwannee	384	65.4%	14.1%	20.6%
62	Taylor	200	76.5%	12.5%	11.0%
63	Union	137	92.7%	3.6%	3.6%
64	Volusia	4,195	77.9%	4.4%	17.8%
65	Wakulla	315	88.3%	6.3%	5.4%
66	Walton	443	82.2%	6.8%	11.1%
67	Washington	242	82.2%	6.2%	11.6%
68	Deaf/Blind	84	84.5%		15.5%
69	Dozier/Okee	52	9.6%	5.8%	84.6%
72	FAU	30	100.0%		
73	FSU	135	98.5%		1.5%
74	FAMU	41	95.1%		4.9%
75	UF	114	95.6%		4.4%
	FLORIDA	183,490	80.1%	5.5%	14.4%

*Source: 2010-11 Florida Department of Education (FL DOE) cohort data as of 11/4/11.

Appendix A: Withdrawal Codes/Diploma Types Crosswalk
Source: Automated Student Database Manual

Withdrawal Code/Diploma Type and Definition	NCLB Modified Graduation Rate or NGA	Florida's Graduation Rate
DNE - Any PK-12 student who was expected to attend a school but did not enter as expected for unknown reasons.	dropout	dropout
W01 - Any PK-12 student promoted, retained or transferred to another attendance reporting unit in the same school.	non-graduate – still in school , thus counted as a non-graduate	non-graduate – still in school , thus counted as a non-graduate
*W02 - Any PK-12 student promoted, retained or transferred to another school in the same district.	non-graduate if this is the last WD code for the district	non-graduate if this is the last WD code for the district
**W3A - Any PK-12 student who withdraws to attend a public school in another district in Florida.	transferred out of cohort	transferred out of cohort
W3B – Any PK-12 student who withdraws to attend another public school out-of-state.	transferred out of cohort	transferred out of cohort
W04 - Any PK-12 student who withdraws to attend a nonpublic school in- or out-of-state.	transferred out of cohort	transferred out of cohort
W05 - Any student age 16 or older who leaves school voluntarily with no intention of returning.	dropout	dropout
W06 - Any student who graduated from school and met all of the requirements to receive a standard diploma	graduate	graduate
W6A - Any student who graduated from school and met all of the requirements to receive a standard diploma, based on the 18-credit college preparatory graduation option	graduate	graduate
W6B - Any student who graduated from school and met all of the requirements to receive a standard diploma, based on the 18-credit career preparatory graduation option	graduate	graduate
W07 - Any student who graduated from school with a special diploma based on option one--mastery of Sunshine State Standards for Special Diploma	graduate	graduate
W08 - Any student who received a certificate of completion	non-graduate	non-graduate
W8A - Any student who met all of the requirements to receive a standard diploma except passing the graduation test and received a certificate of completion and is eligible to take the College Placement Test and be admitted to remedial or credit courses at a state community college as appropriate	non-graduate	non-graduate
W09 - Any student who received a special certificate of completion	non-graduate	non-graduate
W10 – Any student in a GED Exit Option Model who passed the GED Tests and the graduation test and was awarded a standard diploma	non-graduate	graduate
W12 - Any PK-12 student withdrawn from school due to death.	transferred out of cohort	transferred out of cohort
W13 - Any PK-12 student withdrawn from school due to court action.	dropout	dropout
W15 - Any PK-12 student who is withdrawn from school due to nonattendance.	dropout	dropout
W18 - Any PK-12 student who withdraws from school due to medical reasons.	dropout	dropout
W21 - Any PK-12 student who is withdrawn from school due to being expelled.	dropout	dropout
W22 - Any PK-12 student whose whereabouts are unknown.	dropout	dropout
W23 – Any PK-12 student who withdraws from school for any reason other than W01 - W22 or W24 – W27.	dropout	dropout
W24 - Any PK-12 student who withdraws from school to attend a Home Education program.	transferred out of cohort	transferred out of cohort
W25 - Any student under the age of 6 who withdraws	N/A	N/A

Withdrawal Code/Diploma Type and Definition	NCLB Modified Graduation Rate or NGA	Florida's Graduation Rate
from school.		
W26 - Any student who withdraws from school to enter the adult education program prior to completion of graduation requirements.	transferred out of cohort	transferred out of cohort
W27 - Any student who graduated from school with a special diploma based on option two-mastery of employment and community competencies	graduate	graduate
W43 - Any adult student who graduated from school with a standard diploma	graduate	graduate
W44 - Any adult student who left school with a certificate of completion	non-graduate	non-graduate
W45 - Any adult student who left school with a State of Florida diploma (GED)	No (Students with this code are also removed from the denominator.)	graduate
W52 - Any adult student who graduated from school with a standard diploma and satisfied the graduation test requirement through an alternate assessment	graduate	graduate
WFW – Any student who graduated from school with a standard diploma and an FCAT waiver	graduate	graduate
WFT - Any student who graduated from school with a standard diploma and satisfied the graduation test requirement through an alternate assessment (For students meeting accelerated high school graduation option requirements, see WFA and WFB.)	graduate	graduate
WFA – Any student who graduated from school with a standard diploma based on an 18-credit college preparatory graduation option and satisfied the graduation test requirement through an alternate assessment	graduate	graduate
WFB – Any student who graduated from school with a standard diploma based on an 18-credit career preparatory graduation option and satisfied the graduation test requirement through an alternate assessment	graduate	graduate
WGA – Any student in a GED Exit Option Model who passed the GED Tests, satisfied the graduation test requirement through an alternate assessment, and was awarded a standard diploma	non-graduate	graduate
WGD – Any student participating in the GED Exit Option Model who passed the GED Tests but did not pass the graduation test and was awarded a State of Florida diploma	non-graduate	graduate
WPO – Any student who is withdrawn from school subsequent to receiving a W07, W08, W8A, W09, or W27 during the student's year of high school completion. (Example: ESE student who opts to remain in school for an additional year.	No	No
Students transferred to DJJ facilities	transfer	transfer

***The W02 is counted as a non-graduate if the code is at the last school of enrollment in the district.**

Appendix B

Frequently Asked Questions about Florida's Cohort Graduation Rates

What is a cohort?

For graduation purposes, a cohort is a group of students who enter the ninth grade at the same time on the same schedule to graduate four years later.

How is the cohort graduation rate calculated?

The graduation rate is the number of graduates (numerator) divided by the total number of students in the adjusted cohort (denominator).

The denominator (adjusted cohort) is attained by compiling and classifying four years of individual student records to determine which students entered ninth grade for the first time four years prior to the year of the rate calculation; which students transferred into the cohort in ninth grade in year one, tenth grade in year two, eleventh grade in year three, and twelfth grade in year four; and which students from the group transferred out or became deceased.

The numerator is the number of graduates from the adjusted cohort.

Are graduation rates disaggregated by student subgroups?

The NGA and Florida are disaggregated by race. Beginning with the 2008-09 cohort, both rates also will be disaggregated by additional subgroups, including gender, disabled, English Language Learners, economically disadvantaged (students eligible for free/reduced-price lunch), and migrant students.

What are the advantages to using a cohort graduation rate method?

The cohort method allows adjustment for students' mobility, thus providing a more accurate picture of the students' progress and outcomes.

How are students appropriately assigned to a cohort?

Students are assigned to a cohort based upon their initial entry into ninth grade. Incoming students are included in the cohort for which they were originally scheduled to graduate. For example, students transferred into the cohort in ninth grade in year one, tenth grade in year two, eleventh grade in year three, and twelfth grade in year four.

How are students appropriately removed from a cohort?

Currently students transferring to another public or private school, a home education program, or an adult education program, in addition to deceased students are removed from the cohort.

Where can I find a complete list of the withdrawal and diploma codes used in Florida?

Appendices A and B in the Database Manuals for the Automated Student Database System, online at <http://www.fldoe.org/eias/dataweb/default.asp>, provide all the withdrawal and diploma codes.

If a dropout re-enrolls in another high school, how is this student counted in the four-year graduation rate?

For graduation rate purposes, a prior dropout should be updated to a transfer if the student is later found enrolled in another school. Keep in mind, the goal of the cohort graduation rate is to determine the final educational outcome for all students during the four-year window.

How are students who are retained handled?

The student remains in the same cohort no matter how many times they are retained.

What happens if a student who was retained in ninth grade in year one of the cohort transfers to another school in year two of the cohort?

This student remains in the original cohort. He does not "start over" in another cohort. The graduation rate is based upon the students' initial entry into ninth grade; it is not based upon their initial entry into ninth grade at a particular school. An accurate graduation rate reflects the final outcome of all students four years after their initial entry into ninth grade. Cohort-based graduation rates are accurate only if each student is assigned to a single cohort. The USED's Non-Regulatory Guidance paper for NCLB addresses this issue:

If a student who has repeated a grade transfers into a school, the student should be assigned to the cohort in which the student started 9th grade for the first time. This assignment prevents the student from being included in two separate cohorts of 9th graders—the cohort in which the student originally started 9th grade and the cohort in which the student was assigned in the school to which he or she transferred. Unless the student skipped a grade later in high school or caught up with the original cohort in some other manner, that student could not graduate within four years of starting 9th grade.¹

How are students who graduated early, such as those who graduate with the 18 hour diploma, counted?

Students who graduate early are still counted in the cohort for which they were originally assigned. Remember, when calculating the cohort rate we are looking back four years prior. If a student enters ninth grade in 2005-06 and graduates in 2007-08, this student would not be counted as a graduate until 2008-09.

What about students who take longer than four years to graduate?

Students taking longer than four years to graduate would be considered non-graduates in the four-year cohort graduation rate.

Are summer graduates included in the graduation rate?

Yes, summer graduates are counted if they graduate by the end of the current school year.

If a student gets a certificate of completion at the end of the year but takes a course in summer school to earn the required 2.0 GPA, does he count in the graduation rate if he attains the GPA before June 30?

Yes, if the student is reported with an applicable diploma type on the Student End of Year Status records submitted to the DOE for that school year. If the student is not reported with a diploma on the end-of-year records for that year, the student will not be counted as a graduate.

Does the student who earns a certificate of completion but has not passed the FCAT count as a graduate if he takes the ACT in June and gets the concordant score before June 30?

The student will count if he is awarded a diploma by the district and it is reported with a diploma code on the end-of-year record for the applicable school year.

The DOE will identify graduates for the graduation rate based on the diploma type reported for students on the Student End of Year Status record format. Survey 5 data collected on end-of-year records covers students who were enrolled at any time during the 180-day school year, as well as during the school year's associated summer session, as reported by the districts. A student who is not reported with a diploma type on end-of-year records would not be counted as a graduate. A student's status is determined by the most recently reported withdrawal code, certificate type, or diploma type on the end-of-year records.

Does a student who leaves a regular high school and transfers to an adult high school and earns an adult diploma count in the graduation rate?

A student would not count as a graduate in the graduation rate for the regular high school if his/her most recently reported end-of-year data indicated that he/she transferred out of the regular high school as a withdrawal to attend adult education (database code W26). Students who are reported as having received a regular high school diploma through an adult program (database code W43 or W52) are counted as graduates.

Why does Florida calculate more than one graduation rate?

Florida currently calculates the NGA graduation rate, detailed above, which was mandated by the Florida Legislature in 2006 to meet an agreement with the National Governors Association Compact and was first implemented using the data for 2004-05 and reported in the 2005-06 NCLB SPARs, and Florida's regular rate, which has been calculated consistently since 1998-99.

Both versions use the cohort method of tracking individual students in and out of the system from their entrance into the ninth grade through completion four years later. However, each rate defines a graduate differently. The differences between the NGA rate and Florida's regular graduation rate are as follows:

- The NGA graduation rate counts as graduates recipients of standard and special diplomas but not GEDs.

¹ NCLB High School Graduation Rate, Non-Regulatory Guidance, December 2008.

- Florida's regular rate counts all diploma recipients as graduates. This includes standard and special diplomas and all GEDs.

Which graduation rate will be used in the school grades calculation?

For years 2009-10 and 2010-11, the department will use the National Governors Association (NGA) graduation rate in the high school grading formula. The Bureau of Evaluation and Reporting should be contacted at evalnrpt@fldoe.org for more specific information.

Is the NGA rate the same as the federal uniform graduation rate?

No. The NGA graduation rate counts standard and special diplomas as graduates, whereas the federal graduation rate counts only standard diplomas. Both calculations count GEDs as non-graduates.

Why was the NGA rate selected for school grades purposes?

The NGA rate more closely resembles the federal uniform graduation rate in that neither calculation counts GEDs as graduates.

Which students are currently removed from the cohort?

Transfers to other public schools, private schools, home education programs, or adult educational programs are currently considered as transfers and removed from the cohort.

Why can't the graduation rate and the dropout rate be added together to get 100%?

The rates apply to different periods of measurement

- Graduation rate is a four-year, cohort-based indicator.
- Dropout rate is a single-year indicator.

The rates apply to different populations

- Graduation rate tracks the progress of a group of students who entered the same grade at the same time over a four-year period.
- Dropout rate tracks *all* ninth- through twelfth-grade students in a *single* year.

Not all non-graduates in the cohort are dropouts. Some students have been retained and are still in school, and some students received certificates of completion. These completers are considered non-graduates, not dropouts.

Appendix C

Graduation Rate Models for Florida’s Next Generation High School Grading

Overview

For years 2009-10 and 2010-11, the department will use the National Governors Association (NGA) graduation rate in the high school grading formula. NGA graduation rates are currently published in the NCLB School Public Accountability Reports (<http://doeweb-prd.doe.state.fl.us/eds/nclbspar/index.cfm>) under the heading “Graduation rate with GED based diploma recipients counted as non-graduates.” The reporting of the NGA rate was implemented, in part, to address requirements of s. 1001.42(18)(e), F.S., which requires that annual public reports include graduation rates “calculated without GED tests.” The NGA rate has also been used as a preliminary model for the USED’s more rigorous uniform four-year adjusted cohort graduation rate, which will be required as part of AYP reporting beginning in 2011-12. The department plans to replace the NGA graduation rate with the federal uniform graduation rate for high school grading beginning with school year 2011-12. If federal requirements for the uniform rate change in the interim, Florida’s federal uniform rate will be adjusted accordingly.

Graduation Rate Model Comparisons

Both the NGA and federal uniform graduation rates are four-year adjusted cohort rate models. This means that the denominator consists of all students entering grade nine for the first time four years prior to the year for which the rate is calculated, plus incoming transfers (including incoming ninth graders in the first year of the cohort, tenth graders in the second year of the cohort, eleventh graders in the third year of the cohort and twelfth graders in the fourth [final] year of the cohort) **minus** adjustments to the cohort (exiting transfers and deceased students).

All high school students are included in the denominator unless they have been removed from the cohort as an exiting transfer or deceased student. All students from the denominator who are not specifically classified as on-time graduates become non-graduates – including dropouts and other students who remain enrolled at the end of year four but have not yet graduated with a qualifying diploma, as well as certificate recipients and recipients of non-qualifying diploma types.

		<i>DENOMINATOR (Adjusted Cohort)</i>	
	Cohort Adjustments (Students Removed from the Denominator)	Graduates (On-Time Graduates from the Denominator)	Non-Graduates (All Non-Grads Remaining in the Denominator)
<p>NGA Rate (To be used for school years 2009-10 and 2010-11.)</p>	<p>Transfers to:</p> <ul style="list-style-type: none"> • Other public high schools (including DJJs) or private high schools; • Home-education programs; • <u>Adult-education programs*</u>; and • Deceased students. <p><small>*Adult-Ed GED diploma recipients are also classified as adult-education transfers for the NGA rate and are removed from the cohort.</small></p>	<ul style="list-style-type: none"> • Standard diploma recipients. • Special diploma recipients. 	<ul style="list-style-type: none"> • Dropouts, • Certificate recipients, • <i>HS Exit Option GED*</i> diploma recipients, • Continuing enrollees who are not on-time graduates. <p><small>* Adult-Ed GED diploma recipients are classified as adult-education transfers and removed from the cohort (they are not non-grads here).</small></p>
<p>Federal Uniform Rate (To be used for school years 2011-12 and beyond.)</p>	<p>Transfers to:</p> <ul style="list-style-type: none"> • Other public or private high schools (<u>not including</u> DJJs); • Home-education programs; and • Deceased students. 	<ul style="list-style-type: none"> • Standard diploma recipients. 	<ul style="list-style-type: none"> • Dropouts, • Certificate recipients, • GED diploma recipients, • Special diploma recipients, • Continuing enrollees who are not on-time graduates, • <u>Transfers to adult education programs or DJJ centers who are not standard diploma recipients.</u>

See Appendix D for information on which DOE database diploma codes count as graduates.

Appendix D

Florida DOE Database Diploma Codes: Grad/Non-Grad Classification in Graduation Rate for High School Grading

NGA Graduation Rate (for 2009-10 and 2010-11):

Diploma Graduates	Diploma Non-Graduates	Diploma - Other
<p>Standard Diplomas:</p> <p><i>W06 – standard diploma</i> <i>W6A – accelerated college prep option (18 hrs.)</i> <i>W6B – accelerated career prep option (18 hrs.)</i> <i>WFA – accelerated college prep, alt assessment in lieu of FCAT (18 hrs.)</i> <i>WFB – accelerated career prep, alt assessment in lieu of FCAT (18 hrs.)</i> <i>WFT – standard diploma, alt assessment in lieu of FCAT</i> <i>WFW – standard diploma for SWD with FCAT waiver</i> <i>W43 – A standard high school diploma awarded through an adult education program (full credit hrs.; passing FCAT)</i> <i>W52 – A standard high school diploma awarded through an adult education program (full credit hrs.; alt. assessment in lieu of FCAT)</i></p> <p>Special Diplomas:</p> <p><i>W07 – special diploma, option 1 for SWDs</i> <i>W27 – special diploma, option 2 for SWDs</i></p>	<p>HS Exit Option GEDs:</p> <p><i>WGA – High school equivalency diploma awarded to exit option students who passed the GED and used an alt. assessment in lieu of FCAT</i> <i>WGD – High school “State of Florida” diploma awarded to exit option students who passed the GED but not the FCAT</i> <i>W10 – High school equivalency diploma awarded to exit option students who passed the GED and the FCAT</i></p>	<p>Adult Education GED:</p> <p><i>W45 – Adult education program GED diploma (Treated the same as a transfer to an adult education program; removed from the cohort; removed from both the numerator and the denominator.)</i></p>

Federal Uniform Rate* (for 2011-12 and beyond):

Diploma Graduates	Diploma Non-Graduates
<p>Standard Diplomas:</p> <p><i>W06 – standard diploma</i> <i>W6A – accelerated college prep option (18 hrs.)</i> <i>W6B – accelerated career prep option (18 hrs.)</i> <i>WFA – accelerated college prep, alt assessment in lieu of FCAT (18 hrs.)</i> <i>WFB – accelerated career prep, alt assessment in lieu of FCAT (18 hrs.)</i> <i>WFT – standard diploma, alt assessment in lieu of FCAT</i> <i>WFW – standard diploma for SWD with FCAT waiver</i> <i>W43 – A standard high school diploma awarded through an adult education program (full credit hours; passing FCAT)</i> <i>W52 – A standard high school diploma awarded through an adult education program (full credit hrs.; alt. assessment in lieu of FCAT)</i></p>	<p>All GED Diplomas:</p> <p><i>WGA – High school equivalency diploma awarded to exit option students who passed the GED and used an alt. assessment in lieu of FCAT</i> <i>WGD – High school “State of Florida” diploma awarded to exit option students who passed the GED but not the FCAT</i> <i>W10 – High school equivalency diploma awarded to exit option students who passed the GED and the FCAT</i> <i>W45 – Adult education program GED diploma</i></p> <p>Special Diplomas:</p> <p><i>W07 – special diploma, option 1 for SWDs</i> <i>W27 – special diploma, option 2 for SWDs</i></p>

* If the U.S. Department of Education changes requirements for the federal uniform rate between now and 2011-12, Florida’s federal uniform rate model will be adjusted accordingly.

Sources

Florida Department of Education 2010-11 Database Manuals:

Appendix A – Attendance Recordkeeping Required Codes for Grade PK-12 Students

(URL: http://www.fldoe.org/eias/dataweb/database_1011/appenda.pdf)

Appendix B – Attendance Recordkeeping Required Codes for Adult Students

(URL: http://www.fldoe.org/eias/dataweb/database_1011/appendb.pdf)