

Data Report

Florida's High School Cohort Graduation Rates and Single-year Dropout Rates, 2012-13

Series 2014-06D

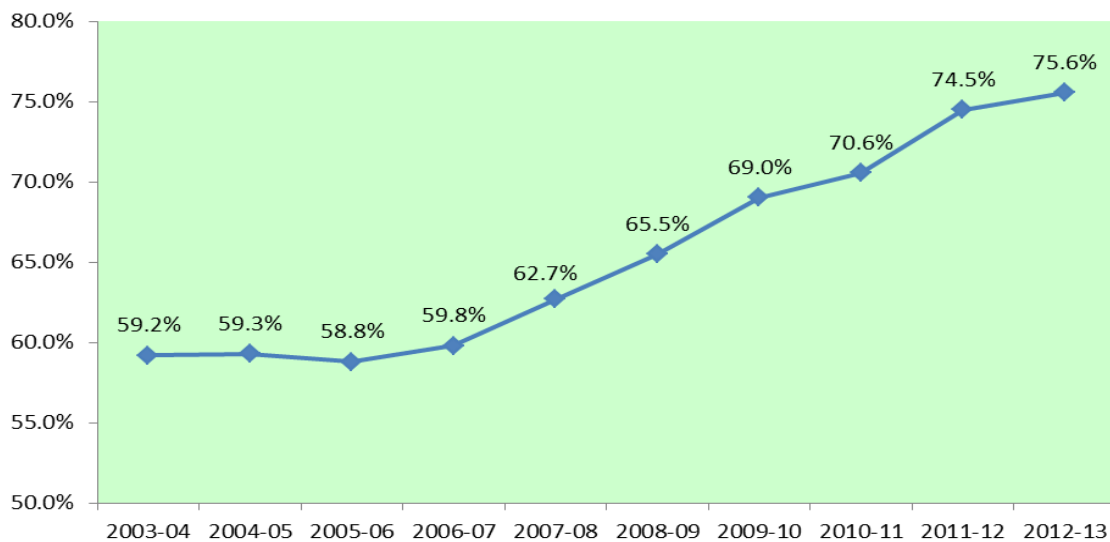
November 2013

Florida's Graduation Rate

Florida's high school graduation rate increased by 1.1 percentage points over the last year and has increased significantly during the past ten years. The rate rose from 59.2 percent in 2003-04 to 75.6 percent in 2012-13. Figure 1 below shows the trend in graduation rates from 2003-04 through 2012-13.

Federal regulations require each state to calculate a four-year adjusted cohort graduation rate, which includes standard diplomas but excludes GEDs, both regular and adult, and special diplomas. The US Department of Education (USED) adopted this calculation method in an effort to develop uniform, accurate and comparable graduation rates across all states. The USED required states to begin calculating the new graduation rate in 2010-11. This graduation rate is currently used in Florida's school accountability system in the high school grades calculation.

Figure 1: Florida's Graduation Rates, 2003-04 through 2012-13



Florida Department of Education
Pam Stewart, Commissioner

Florida's graduation rate is a cohort graduation rate. A cohort is defined as a group of students on the same schedule to graduate. The graduation rate measures the percentage of students who graduate within four years of their first enrollment in ninth grade. Subsequent to their enrollment in ninth grade, students who transfer out and deceased students are removed from the calculation. Entering transfer students are included in the graduation rate for the class with which they are scheduled to graduate, based on their date of enrollment. District-level graduation rates are provided in tables 5 and 6. School-level graduation rates are available online at <http://www.fldoe.org/ARRA/arra-Indicator.asp> and http://www.fldoe.org/eias/eiaspubs/xls/FedGradRateRace_1213.xls.

In the calculation, stringent guidelines are prescribed for not only the definition of a graduate, but also for the definition of a transfer. Students who transfer to adult education programs or Department of Juvenile Justice (DJJ) facilities remain with their regular high schools' cohorts.

If you have questions regarding the content of this publication, please contact the Florida Department of Education, Bureau of Education Information and Accountability Services at (850) 245-0400, or send e-mail to askeias@fldoe.org.

How Does Florida's Graduation Rate Compare with Other States' Rates?

The USED requires all states to report a uniform cohort graduation rate, but publication of national data tends to lag by two to three years. Therefore, the most current national data available is for the 2010-11 school year. Graduation rates by state are accessible through the ED Data Express at <http://eddataexpress.ed.gov/>.

Graduation Rates by Race/Ethnicity and Gender

Florida's graduation rates vary by race/ethnicity, but all groups have increased their graduation rates over the last few years. The graduation rates for Hispanic/Latino and American Indian or Alaska Native students have increased the most (11.5 percentage points) since 2008-09. The graduation rate for Black or African American students has also increased by 10.9 percent over the same period.

Table 1: Graduation Rates by Race/Ethnicity, 2008-09 through 2012-13

	White	Black or African American	Hispanic/Latino	Asian	American Indian or Alaska Native	Two or More Races	Native Hawaiian or Other Pacific Islander	Total
2008-09	71.2%	53.7%	63.4%	83.4%	65.3%	71.7%		65.5%
2009-10	74.1%	57.9%	68.1%	86.0%	67.5%	74.2%		69.0%
2010-11	76.2%	58.6%	69.4%	85.9%	69.7%	75.1%	N/A	70.6%
2011-12	79.4%	63.7%	72.9%	88.4%	69.7%	78.6%	62.5%	74.5%
2012-13	80.5%	64.6%	74.9%	88.4%	76.8%	79.7%	88.2%	75.6%

Note: Beginning with the 2010-11 school year, Florida implemented new data elements for collecting and reporting student demographic data in compliance with changes made by the U.S. Office of Management and Budget. For race, students select one or more of the following: American Indian or Alaska Native, Asian, Black or African American, Native Hawaiian or Other Pacific Islander, White. Students who select more than one racial category, but do not indicate that they are Hispanic or Latino, are included in the Two or More Races category in this report. All students who indicated that they are Hispanic or Latino are included only in the Hispanic/Latino rates in this report; they are not included in the racial categories they have selected.

Table 2: Graduation Rates by Gender within Race/Ethnicity, 2008-09 through 2012-13

	White Female	White Male	Black or African American Female	Black or African American Male	Hispanic /Latino Female	Hispanic/ Latino Male	Asian Female	Asian Male
2008-09	76.3%	66.4%	61.5%	46.3%	69.6%	57.6%	86.3%	80.6%
2009-10	79.1%	69.5%	65.4%	50.7%	73.8%	62.7%	89.3%	82.8%
2010-11	80.6%	72.1%	64.8%	52.6%	73.8%	65.2%	88.0%	84.0%
2011-12	83.3%	75.6%	70.0%	57.3%	77.1%	68.9%	90.4%	86.5%
2012-13	84.4%	76.7%	70.5%	58.9%	78.0%	71.9%	90.8%	86.0%

Table 3: Graduation Rates by Gender within Race/Ethnicity, 2008-09 through 2012-13, continued

	American Indian or Alaska Native Female	American Indian or Alaska Native Male	Two or More Races Female	Two or More Races Male	Native Hawaiian or Other Pacific Islander Female	Native Hawaiian or Other Pacific Islander Male	Total Female	Total Male
2008-09	68.7%	62.0%	75.7%	67.3%			71.4%	59.9%
2009-10	73.2%	62.6%	78.8%	69.3%			74.7%	63.6%
2010-11	73.3%	66.5%	79.7%	70.8%			75.3%	66.0%
2011-12	73.6%	65.6%	81.4%	75.8%	61.5%	63.2%	78.9%	70.2%
2012-13	83.5%	70.9%	83.1%	76.3%	91.7%	86.4%	79.7%	71.6%

Diploma Types

Florida students may receive several types of diplomas upon completion of high school. Table 4 details the number of each type of diploma awarded for the past five cohorts. A complete list of the diploma definitions is provided in Appendices A and B of the 2012-13 Database Manuals, available at http://www.fldoe.org/eias/dataweb/student_1213.asp#APPENDICES.

Table 4: Diploma Types by Number of Diplomas Awarded (Cohort Based)

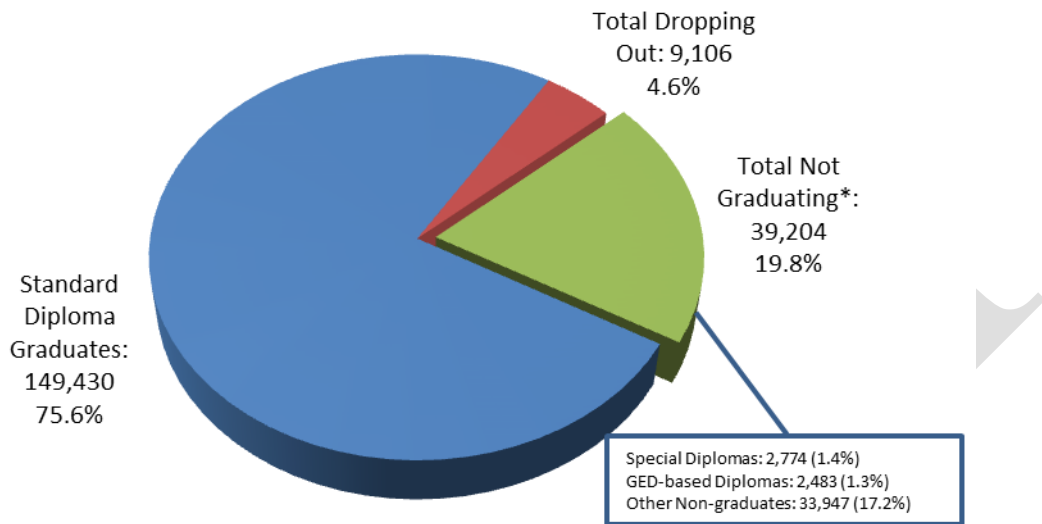
Diploma Types	Diploma Definitions	2008-09	2009-10	2010-11	2011-12	2012-13
Standard Diplomas*						
W06	Any student who graduated from school and met all of the requirements to receive a standard diploma	127,855	132,783	133,766	132,333	136,210
W43	Any adult student who graduated from school with a standard diploma	343	297	227	166	211
W52	Any adult student who graduated from school with a standard diploma and satisfied the graduation test requirement through an alternate assessment	14	12	6	8	4
W6A	Any student who graduated from school and met all of the requirements to receive a standard diploma, based on the 18-credit college preparatory graduation option	62	89	15	32	35
W6B	Any student who graduated from school and met all of the requirements to receive a standard diploma, based on the 18-credit career preparatory graduation option	18	27	6	14	11
WFA	Any student who graduated from school with a standard diploma based on an 18-credit college preparatory graduation option and satisfied the graduation test requirement through an alternate assessment	12	8	6	3	19
WFB	Any student who graduated from school with a standard diploma based on an 18-credit career preparatory graduation option and satisfied the graduation test requirement through an alternate assessment	8	8	1	0	1
WFT	Any student who graduated from school with a standard diploma and satisfied the graduation test requirement through an alternate assessment (For students meeting accelerated high school graduation option requirements, see WFA and WFB.)	9,410	10,458	5,865	6,716	9,122
WFW	Any student who graduated from school with a standard diploma and an FCAT waiver	2,767	2,700	3,447	2,681	3,817
Total Standard Diplomas		140,489	146,382	143,339	141,953	149,430
Special Diplomas						
W07	Any student who graduated from school with a special diploma based on option one--mastery of Sunshine State Standards for Special Diploma	3,462	3,750	3,408	2,661	2,589
W27	Any student who graduated from school with a special diploma based on option two--mastery of employment and community competencies	489	401	217	161	185
Total Special Diplomas		3,951	4,151	3,625	2,822	2,774
GED-based Diplomas						
W10	Any student in a GED Exit Option Model who passed the GED Tests and the graduation test and was awarded a standard diploma	2,585	1,740	927	560	418
W45	Any adult student who left school with a State of Florida diploma (GED)	3,223	2,365	2,906	1,010	1,650
WGA	Any student in a GED Exit Option Model who passed the GED Tests, satisfied the graduation test requirement through an alternate assessment, and was awarded a standard diploma	81	83	21	25	19
WGD	Any student participating in the GED Exit Option Model who passed the GED Tests but did not pass the graduation test and was awarded a State of Florida diploma	995	931	578	529	396
Total GED Based Diplomas		6,884	5,119	4,432	2,124	2,483
TOTAL COMPLETERS		151,324	155,652	151,396	146,899	154,687

*These diploma types are counted as graduates in the graduation rate.

Withdrawal Status of All Students in the Graduation Cohort

Florida's graduation rate is 75.6 percent, but that does not mean that 24.4 percent of students in the cohort are dropouts. In a cohort students can be classified as graduates, dropouts and non-graduates. Non-graduates include students who have been retained and are still in school, received certificates of completion or received GED-based diplomas. In Florida's 2012-13 cohort, 4.6 percent of the students dropped out and 19.8 percent were retained or earned a certificate of completion, special diploma or GED-based diploma. Figure 2 illustrates the proportions of students in the 2012-13 cohort who graduated, dropped out and did not graduate. District-level data are provided in Table 7.

Figure 2: 2012-13 Cohort Outcomes by Withdrawal Code Categories



*Non-graduates include special diplomas, certificates of completion, GED recipients and repeaters.

Table 5: Graduation Rates by District, 2008-09 through 2012-13*

District	2008-09	2009-10	2010-11	2011-12	2012-13
01 Alachua	55.9%	62.6%	63.4%	68.7%	72.6%
02 Baker	68.9%	64.5%	65.0%	72.8%	68.8%
03 Bay	64.2%	69.2%	68.1%	73.7%	73.0%
04 Bradford	59.0%	51.8%	61.1%	64.2%	67.5%
05 Brevard	78.5%	80.6%	81.4%	85.2%	87.4%
06 Broward	68.4%	72.4%	71.6%	76.4%	75.3%
07 Calhoun	71.3%	76.1%	74.1%	77.3%	80.6%
08 Charlotte	70.7%	73.4%	73.0%	79.2%	75.5%
09 Citrus	65.9%	68.9%	74.5%	78.0%	80.1%
10 Clay**	67.0%	70.0%	74.4%	74.2%	77.9%
11 Collier	68.1%	70.6%	72.5%	78.4%	81.3%
12 Columbia	56.6%	59.9%	63.2%	64.8%	65.7%
13 Miami-Dade	62.0%	68.3%	71.3%	76.0%	77.2%
14 DeSoto	57.8%	53.2%	63.1%	67.9%	61.6%
15 Dixie	61.9%	56.0%	52.5%	77.1%	82.4%
16 Duval	55.8%	58.3%	63.3%	67.7%	72.1%
17 Escambia	56.2%	55.5%	57.7%	62.1%	64.2%
18 Flagler	65.1%	69.7%	70.1%	74.8%	76.9%
19 Franklin	62.4%	57.8%	59.0%	59.0%	58.8%
20 Gadsden	48.2%	43.0%	55.1%	61.4%	58.3%
21 Gilchrist	77.3%	77.7%	79.9%	85.9%	89.7%
22 Glades	56.4%	56.0%	47.7%	64.8%	61.8%
23 Gulf	75.4%	81.9%	77.6%	84.7%	85.7%
24 Hamilton	47.7%	52.6%	65.0%	55.0%	55.5%
25 Hardee	57.6%	60.4%	65.7%	63.6%	65.2%
26 Hendry	60.6%	69.2%	65.6%	73.5%	67.8%
27 Hernando	65.4%	68.8%	71.5%	74.2%	74.1%
28 Highlands	59.7%	58.8%	60.2%	62.1%	61.8%
29 Hillsborough	66.1%	66.7%	69.3%	72.6%	74.1%
30 Holmes	79.3%	78.2%	75.1%	72.8%	78.1%
31 Indian River	67.6%	67.2%	71.7%	80.9%	80.1%
32 Jackson	63.4%	68.1%	64.7%	69.2%	72.1%
33 Jefferson	39.2%	43.5%	38.6%	42.6%	35.1%
34 Lafayette	64.1%	81.3%	63.8%	65.8%	87.5%
35 Lake	66.1%	70.9%	75.4%	78.2%	78.3%
36 Lee	65.7%	69.8%	68.9%	71.9%	74.4%
37 Leon	64.4%	64.1%	68.4%	71.3%	77.0%
38 Levy	55.0%	61.1%	61.0%	72.2%	77.6%
39 Liberty	61.8%	58.2%	53.5%	64.2%	68.9%
40 Madison	70.3%	56.3%	57.1%	66.3%	64.0%
41 Manatee	64.4%	67.9%	64.7%	76.2%	76.8%
42 Marion	58.3%	62.8%	69.8%	75.2%	76.7%
43 Martin	71.2%	75.5%	82.4%	84.9%	87.7%
44 Monroe	63.9%	71.2%	66.4%	68.6%	70.8%
45 Nassau	66.4%	76.4%	79.9%	89.0%	90.9%
46 Okaloosa	85.2%	86.2%	84.5%	83.3%	82.7%
47 Okeechobee	56.9%	58.5%	61.9%	58.9%	63.0%
48 Orange	67.4%	71.8%	71.4%	73.9%	75.9%
49 Osceola	71.9%	75.8%	76.1%	77.5%	78.1%
50 Palm Beach	70.1%	74.8%	74.3%	77.0%	76.3%
51 Pasco	62.2%	67.2%	71.0%	76.6%	75.9%
52 Pinellas	62.5%	64.8%	65.2%	72.0%	71.8%
53 Polk	61.3%	62.9%	66.4%	67.6%	69.4%
54 Putnam	56.4%	57.7%	63.2%	58.9%	58.2%
55 St. Johns	83.0%	83.9%	85.8%	86.0%	86.7%
56 St. Lucie	62.0%	63.7%	65.4%	70.6%	67.7%
57 Santa Rosa	72.8%	74.7%	77.8%	77.2%	78.9%
58 Sarasota	66.3%	71.4%	70.7%	78.0%	76.2%
59 Seminole	75.4%	77.8%	78.8%	80.3%	83.8%
60 Sumter	69.8%	73.6%	75.3%	77.7%	78.5%
61 Suwannee	52.7%	53.7%	54.4%	59.5%	59.5%
62 Taylor	59.0%	57.8%	61.1%	63.5%	62.4%
63 Union	63.8%	64.3%	73.7%	70.4%	79.0%
64 Volusia	58.7%	63.9%	62.0%	66.8%	68.0%
65 Wakulla	62.3%	65.9%	74.7%	70.4%	78.9%
66 Walton	72.1%	74.2%	74.2%	74.5%	77.6%
67 Washington	71.4%	75.1%	68.7%	71.1%	71.0%
68 Deaf/Blind	54.1%	54.3%	64.3%	36.9%	44.0%
69 Wash. Special	0.0%	0.0%	3.2%	0.0%	#
71 FL Virtual				#	#
72 FAU Lab Sch	100.0%	100.0%	100.0%	100.0%	100.0%
73 FSU Chtr Sch	97.1%	97.2%	98.5%	98.5%	97.6%
74 FAMU Lab Sch	93.5%	94.6%	95.1%	81.8%	92.9%
75 UF Lab Sch	93.2%	95.7%	95.6%	94.8%	95.0%
FLORIDA	65.5%	69.0%	70.6%	74.5%	75.6%

*Source: 2012-13 Florida Department of Education (FDOE) cohort graduation data as of 10/18/13.

**Clay County's 2011-12 rate was revised after the official release.

A pound sign (#) replaces data when the cohort is fewer than ten students. A blank cell indicates no students in the cohort.

Table 6: Graduation Rates by Race/Ethnicity by District, 2012-13*

District	White	Black or African American	Hispanic/Latino	Asian	American Indian or Alaska Native	Two or More Races	Native Hawaiian or Other Pacific Islander	Total
01 Alachua	83.3%	55.3%	74.5%	93.1%	#	72.5%		72.6%
02 Baker	70.4%	59.2%	#	#	#	60.0%		68.8%
03 Bay	74.9%	61.5%	73.4%	79.2%	71.4%	78.3%		73.0%
04 Bradford	69.7%	65.7%	#			#		67.5%
05 Brevard	88.3%	80.7%	86.8%	92.9%	93.8%	92.6%	#	87.4%
06 Broward	83.0%	66.2%	78.3%	87.6%	72.5%	86.8%	#	75.3%
07 Calhoun	78.8%	84.2%	#	#	#	#		80.6%
08 Charlotte	77.0%	69.7%	68.3%	84.0%	60.0%	73.3%		75.5%
09 Citrus	80.0%	69.8%	85.2%	88.0%	#	76.5%		80.1%
10 Clay	78.7%	73.3%	77.1%	84.8%	#	79.4%	#	77.9%
11 Collier	86.0%	79.1%	76.4%	94.3%	#	71.7%		81.3%
12 Columbia	68.6%	55.3%	56.7%	81.8%	#	81.8%		65.7%
13 Miami-Dade	85.9%	69.2%	78.6%	91.7%	87.0%	90.8%		77.2%
14 DeSoto	61.0%	68.2%	60.0%	#	#	#		61.6%
15 Dixie	84.3%	75.0%	#			#		82.4%
16 Duval	77.2%	65.9%	72.0%	84.0%	84.6%	80.6%	#	72.1%
17 Escambia	71.2%	51.4%	65.4%	82.4%	78.8%	75.5%	#	64.2%
18 Flagler	77.6%	67.9%	77.6%	94.1%	#	81.8%		76.9%
19 Franklin	56.3%	75.0%	#			#		58.8%
20 Gadsden	#	60.9%	35.1%	#		#		58.3%
21 Gilchrist	90.2%	#	#	#		#		89.7%
22 Glades	56.3%	68.2%	63.6%					61.8%
23 Gulf	86.1%	82.6%	#			#		85.7%
24 Hamilton	68.0%	43.2%	46.7%	#				55.5%
25 Hardee	65.9%	57.9%	63.8%	#				65.2%
26 Hendry	72.2%	65.3%	65.7%	#	#	#		67.8%
27 Hernando	74.1%	70.9%	73.2%	86.2%	#	80.4%		74.1%
28 Highlands	66.8%	52.9%	58.8%	73.7%	#	52.0%		61.8%
29 Hillsborough	83.6%	59.2%	68.4%	91.2%	82.4%	80.6%	#	74.1%
30 Holmes	78.3%	#	#			#		78.1%
31 Indian River	84.4%	66.7%	77.1%	78.3%	#	76.0%		80.1%
32 Jackson	73.0%	71.7%	75.0%	#	#	62.5%		72.1%
33 Jefferson	52.2%	26.5%	#					35.1%
34 Lafayette	92.1%	#	#			#		87.5%
35 Lake	81.2%	67.1%	78.2%	88.6%	83.3%	77.3%		78.3%
36 Lee	79.2%	60.9%	71.5%	95.0%	64.7%	75.2%	#	74.4%
37 Leon	84.5%	62.8%	76.6%	98.5%	#	89.1%		77.0%
38 Levy	79.3%	70.3%	73.9%	#	#	#		77.6%
39 Liberty	69.6%	#	#			#		68.9%
40 Madison	69.7%	58.6%	#	#	#	#		64.0%
41 Manatee	83.4%	65.7%	63.6%	90.7%	#	82.6%		76.8%
42 Marion	79.8%	65.8%	77.8%	83.7%	80.0%	78.1%		76.7%
43 Martin	91.9%	70.4%	77.6%	100.0%	#	84.3%		87.7%
44 Monroe	79.4%	42.4%	61.1%	#	#	90.9%		70.8%
45 Nassau	91.7%	83.1%	88.9%	#	#	87.0%		90.9%
46 Okaloosa	85.3%	69.5%	76.5%	83.9%	92.3%	78.6%	#	82.7%
47 Okeechobee	65.1%	47.6%	64.0%	#	50.0%	72.7%		63.0%
48 Orange	85.0%	63.6%	74.5%	89.2%	76.6%	81.7%	#	75.9%
49 Osceola	83.3%	74.0%	75.2%	87.3%	90.5%	78.5%		78.1%
50 Palm Beach	85.5%	63.8%	75.0%	86.2%	77.8%	80.7%	#	76.3%
51 Pasco	75.4%	77.2%	76.5%	89.7%	73.3%	75.2%	#	75.9%
52 Pinellas	76.6%	56.3%	62.4%	86.3%	75.0%	71.5%		71.8%
53 Polk	73.4%	62.2%	65.8%	82.5%	63.6%	72.9%	#	69.4%
54 Putnam	59.3%	53.8%	57.9%	#	#	75.0%		58.2%
55 St. Johns	87.6%	69.5%	91.0%	95.4%	#	#		86.7%
56 St. Lucie	72.0%	58.5%	68.9%	84.1%	90.0%	78.6%		67.7%
57 Santa Rosa	78.3%	74.1%	80.6%	97.7%	71.4%	90.7%	#	78.9%
58 Sarasota	79.9%	56.3%	64.1%	92.4%	72.7%	79.1%		76.2%
59 Seminole	87.1%	71.9%	79.0%	92.3%	#	83.3%	#	83.8%
60 Sumter	80.7%	66.7%	76.7%	#	#	90.0%		78.5%
61 Suwannee	62.8%	40.4%	69.0%	#		#		59.5%
62 Taylor	65.3%	58.5%	#	#	#	#		62.4%
63 Union	79.4%	85.2%	#			#		79.0%
64 Volusia	72.1%	52.7%	61.7%	86.0%	88.9%	68.6%		68.0%
65 Wakulla	78.8%	79.4%	#	#	#	#		78.9%
66 Walton	77.5%	72.5%	82.1%	#	#	#		77.6%
67 Washington	74.6%	55.3%	#	#	#	#		71.0%
68 Deaf/Blind	53.5%	28.6%	26.3%	#		#		44.0%
69 Wash. Special	#	#				#		#
71 FL Virtual	#		#					#
72 FAU Lab Sch	100.0%	#	#	#	#			100.0%
73 FSU Chtr Sch	97.5%	98.4%	90.0%	#		100.0%		97.6%
74 FAMU Lab Sch	#	92.7%						92.9%
75 UF Lab Sch	96.2%	90.6%	96.4%	#		#		95.0%
FLORIDA	80.5%	64.6%	74.9%	88.4%	76.8%	79.7%	88.2%	75.6%

*Source: 2012-13 Florida Department of Education (FDOE) cohort graduation data as of 10/18/13.

A pound sign (#) replaces data when the cohort is fewer than ten students. A blank cell indicates no students in the cohort.

Table 7: Cohort Outcomes by Withdrawal Code Category, 2012-13

	District	Adjusted Cohort Total	% Graduating with Standard Diploma	% Special Diplomas	% Graduating with GED or GED-based Diplomas	% Other Non-graduates	% Dropping Out
01	Alachua	2,102	72.6%	1.9%	0.2%	17.8%	7.5%
02	Baker	349	68.8%	1.7%	0.0%	22.3%	7.2%
03	Bay	1,838	73.0%	1.2%	1.8%	20.8%	3.2%
04	Bradford	197	67.5%	5.6%	0.5%	18.8%	7.6%
05	Brevard	5,479	87.4%	1.0%	2.1%	8.0%	1.5%
06	Broward	19,848	75.3%	0.8%	0.2%	20.6%	3.1%
07	Calhoun	170	80.6%	4.1%	7.6%	1.8%	5.9%
08	Charlotte	1,463	75.5%	1.0%	2.3%	13.9%	7.4%
09	Citrus	1,179	80.1%	2.0%	1.6%	12.2%	4.2%
10	Clay	2,922	77.9%	1.4%	1.8%	15.9%	2.9%
11	Collier	3,155	81.3%	1.4%	3.4%	8.2%	5.7%
12	Columbia	686	65.7%	3.2%	1.7%	28.1%	1.2%
13	Miami-Dade	25,622	77.2%	0.5%	0.8%	15.9%	5.7%
14	DeSoto	318	61.6%	1.3%	4.7%	23.0%	9.4%
15	Dixie	148	82.4%	2.7%	0.0%	8.8%	6.1%
16	Duval	7,913	72.1%	2.0%	1.5%	18.7%	5.7%
17	Escambia	3,115	64.2%	3.0%	1.2%	28.3%	3.3%
18	Flagler	1,024	76.9%	1.4%	0.0%	17.4%	4.4%
19	Franklin	80	58.8%	0.0%	2.5%	31.3%	7.5%
20	Gadsden	302	58.3%	4.0%	0.3%	30.5%	7.0%
21	Gilchrist	156	89.7%	1.3%	0.0%	6.4%	2.6%
22	Glades	76	61.8%	2.6%	0.0%	26.3%	9.2%
23	Gulf	147	85.7%	1.4%	0.0%	12.2%	0.7%
24	Hamilton	110	55.5%	2.7%	2.7%	20.9%	18.2%
25	Hardee	330	65.2%	2.4%	0.9%	19.4%	12.1%
26	Hendry	566	67.8%	1.6%	3.2%	18.4%	9.0%
27	Hernando	1,743	74.1%	1.5%	6.6%	11.2%	6.6%
28	Highlands	889	61.8%	3.4%	1.0%	20.8%	13.0%
29	Hillsborough	14,534	74.1%	1.3%	1.9%	19.6%	3.1%
30	Holmes	242	78.1%	1.2%	1.7%	9.1%	9.9%
31	Indian River	1,308	80.1%	1.1%	1.7%	15.1%	1.9%
32	Jackson	488	72.1%	0.8%	4.1%	18.6%	4.3%
33	Jefferson	74	35.1%	4.1%	1.4%	47.3%	12.2%
34	Lafayette	80	87.5%	1.3%	1.3%	10.0%	0.0%
35	Lake	3,076	78.3%	1.3%	1.4%	13.7%	5.3%
36	Lee	6,012	74.4%	2.4%	1.0%	19.4%	2.8%
37	Leon	2,049	77.0%	1.6%	0.9%	17.5%	3.0%
38	Levy	389	77.6%	1.3%	0.0%	16.2%	4.9%
39	Liberty	90	68.9%	3.3%	0.0%	24.4%	3.3%
40	Madison	186	64.0%	6.5%	3.2%	23.1%	3.2%
41	Manatee	3,077	76.8%	2.8%	0.4%	15.3%	4.7%
42	Marion	3,105	76.7%	2.0%	2.8%	14.8%	3.6%
43	Martin	1,456	87.7%	1.2%	1.2%	8.5%	1.4%
44	Monroe	607	70.8%	1.6%	4.9%	17.8%	4.8%
45	Nassau	804	90.9%	1.0%	1.0%	6.3%	0.7%
46	Okaloosa	2,050	82.7%	1.3%	0.9%	13.8%	1.3%
47	Okeechobee	446	63.0%	2.0%	4.0%	13.5%	17.5%
48	Orange	13,273	75.9%	0.9%	0.2%	19.9%	3.1%
49	Osceola	4,185	78.1%	2.0%	0.0%	17.8%	2.1%
50	Palm Beach	13,914	76.3%	1.4%	0.7%	13.2%	8.4%
51	Pasco	4,907	75.9%	1.6%	3.6%	15.8%	3.1%
52	Pinellas	8,295	71.8%	1.3%	2.3%	20.7%	4.0%
53	Polk	6,728	69.4%	2.1%	1.2%	15.5%	11.9%
54	Putnam	744	58.2%	7.8%	4.7%	15.1%	14.2%
55	St. Johns	2,483	86.7%	1.5%	0.4%	7.7%	3.6%
56	St. Lucie	3,132	67.7%	1.1%	0.0%	25.4%	5.8%
57	Santa Rosa	1,934	78.9%	1.2%	1.6%	14.7%	3.6%
58	Sarasota	3,347	76.2%	1.7%	4.9%	12.2%	5.1%
59	Seminole	5,199	83.8%	0.9%	0.9%	13.5%	0.8%
60	Sumter	517	78.5%	2.9%	1.5%	9.3%	7.7%
61	Suwannee	388	59.5%	4.4%	1.3%	30.9%	3.9%
62	Taylor	197	62.4%	3.0%	0.5%	24.9%	9.1%
63	Union	162	79.0%	0.0%	0.0%	19.8%	1.2%
64	Volusia	4,837	68.0%	1.7%	0.0%	27.8%	2.5%
65	Wakulla	304	78.9%	1.3%	2.6%	11.8%	5.3%
66	Walton	478	77.6%	1.3%	0.2%	13.6%	7.3%
67	Washington	259	71.0%	1.5%	2.3%	18.1%	6.9%
68	Deaf/Blind	91	44.0%	34.1%	0.0%	22.0%	0.0%
69	Wash. Special	#	#	#	#	#	#
71	FL Virtual	#	#	#	#	#	#
72	FAU Lab Sch	29	100.0%	0.0%	0.0%	0.0%	0.0%
73	FSU Ctr Sch	168	97.6%	0.0%	0.0%	2.4%	0.0%
74	FAMU Lab Sch	42	92.9%	0.0%	0.0%	7.1%	0.0%
75	UF Lab Sch	119	95.0%	0.0%	0.0%	1.7%	3.4%
	FLORIDA	197,740	75.6%	1.4%	1.3%	17.2%	4.6%

*Source: 2012-13 Florida Department of Education (FDOE) cohort graduation data as of 10/18/13.

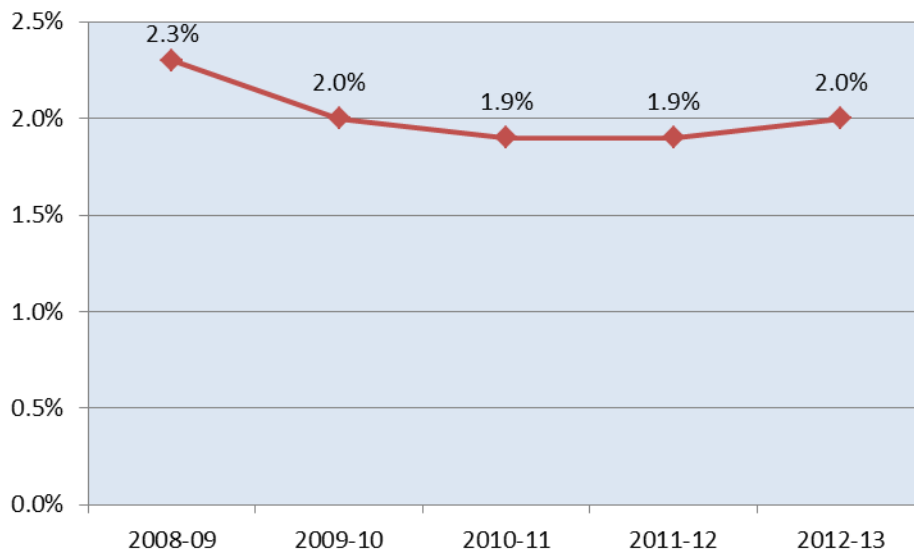
A pound sign (#) replaces data when the cohort is fewer than ten students. A blank cell indicates no students in the cohort.

Single-Year Dropout Rates

Florida's ninth through twelfth grade, single-year dropout rate is the percentage of ninth- through twelfth-grade dropouts compared to the ninth- through twelfth-grade total, year-long student membership. A dropout is defined as a student who withdraws from school for any of several reasons without transferring to another school, home education program or adult education program. The definitions for a dropout are listed below in Table 8.

Florida's 2012-13 ninth through twelfth grade, single-year dropout rate has fluctuated slightly over the past five years from a high of 2.3 percent in 2008-09 to a low of 1.9 percent in 2010-11 and 2011-12. District-level single-year dropout rates are provided in Tables 11 and 12. For school-level dropout rates, please visit <http://www.fldoe.org/eias/eiaspubs/xls/dropschl1213.xls>.

Figure 3: 9th-12th Grade Single-Year Dropout Rates, 2008-09 through 2012-13



Graduation Rate versus Dropout Rate

Florida's single-year dropout rate sometimes causes confusion when attempting to compare the graduation rate to the single-year dropout rate. These rates are not inverses of each other. The differences are as follows:

The rates apply to different periods of time.

- Graduation rate is a four-year, cohort-based indicator.
- Single-year dropout rate is a one-year indicator.

The rates apply to different populations.

- Graduation rate tracks the progress of a group of students who entered the same grade at the same time over a four-year period.
- Single-year dropout rate identifies **all** ninth- through twelfth-grade students in **one** year.

Table 8: Dropout Withdrawal Codes and Definitions

DNE - Any PK-12 student who was expected to attend a school but did not enter as expected for unknown reasons
W05 - Any student age 16 or older who leaves school voluntarily with no intention of returning
W13 - Any PK-12 student withdrawn from school due to court action
W15 - Any PK-12 student who is withdrawn from school due to nonattendance
W18 - Any PK-12 student who withdraws from school due to medical reasons
W21 - Any PK-12 student who is withdrawn from school due to being expelled
W22 - Any PK-12 student whose whereabouts is unknown
W23 - Any PK-12 student who withdraws from school for any reason other than W01 - W22 or W24 - W27

Table 9: 9th-12th Grade Single-Year Dropouts by Gender within Race/Ethnicity, 2008-09 through 2012-13

	White			Black or African American			Hispanic/Latino			Asian		
	F	M	Total	F	M	Total	F	M	Total	F	M	Total
2008-09	1.4%	1.8%	1.6%	3.0%	3.7%	3.4%	2.2%	2.9%	2.5%	0.6%	1.0%	0.8%
2009-10	1.2%	1.6%	1.4%	2.6%	3.5%	2.9%	2.1%	3.0%	2.5%	0.7%	0.8%	0.8%
2010-11	1.1%	1.6%	1.4%	2.5%	3.4%	3.0%	1.7%	2.5%	2.1%	0.5%	0.8%	0.6%
2011-12	1.2%	1.7%	1.4%	2.6%	3.6%	3.1%	1.6%	2.2%	1.9%	0.6%	0.6%	0.6%
2012-13	1.2%	1.8%	1.5%	2.8%	3.9%	3.4%	1.5%	2.3%	1.9%	0.4%	0.8%	0.6%

Table 10: 9th-12th Grade Single-Year Dropouts by Gender within Race/Ethnicity, 2008-09 through 2012-13, continued

	American Indian/Alaska Native			Two or More Races			Pacific Islander			Female Total	Male Total	Total
	F	M	Total	F	M	Total	F	M	Total			
2008-09	1.9%	2.6%	2.3%	1.4%	1.7%	1.6%				2.0%	2.5%	2.3%
2009-10	2.1%	2.4%	2.2%	1.1%	1.7%	1.4%				1.7%	2.3%	2.0%
2010-11	1.0%	2.0%	1.5%	1.1%	1.5%	1.3%	0.5%	2.8%	1.7%	1.6%	2.3%	1.9%
2011-12	2.1%	2.7%	2.4%	1.1%	1.6%	1.3%	1.8%	2.5%	2.2%	1.6%	2.2%	1.9%
2012-13	1.8%	3.0%	2.4%	1.4%	2.0%	1.7%	1.6%	1.8%	1.7%	1.7%	2.4%	2.0%

Table 11: 9th-12th Grade Single-Year Dropout Rates by Race/Ethnicity, 2012-13*

District	White	Black or African American	Hispanic/Latino	Asian	American Indian/Alaska Native	Two or More Races	Pacific Islander
01 Alachua	1.9%	5.7%	4.1%	0.3%	0.0%	3.6%	#
02 Baker	1.1%	1.2%	0.0%	#	#	0.0%	#
03 Bay	1.2%	1.9%	1.1%	1.1%	2.5%	1.2%	#
04 Bradford	2.1%	5.0%	0.0%	#	#	0.0%	#
05 Brevard	0.6%	1.6%	0.6%	0.0%	1.6%	0.6%	0.0%
06 Broward	1.5%	3.2%	1.5%	0.6%	2.4%	1.4%	0.0%
07 Calhoun	1.5%	1.4%	0.0%	#	#	3.1%	#
08 Charlotte	2.8%	3.2%	4.5%	0.0%	#	1.7%	#
09 Citrus	1.8%	2.5%	1.1%	0.0%	0.0%	1.4%	#
10 Clay	1.0%	1.4%	1.2%	0.0%	0.0%	0.5%	0.0%
11 Collier	1.7%	1.8%	2.7%	0.0%	1.7%	1.3%	0.0%
12 Columbia	0.3%	0.4%	0.0%	0.0%	#	0.0%	#
13 Miami-Dade	1.7%	4.5%	2.0%	1.1%	0.9%	2.2%	4.5%
14 DeSoto	2.2%	1.3%	2.0%	#	#	0.0%	#
15 Dixie	1.1%	0.0%	0.0%	#	#	0.0%	#
16 Duval	3.4%	4.9%	4.1%	1.8%	5.2%	5.0%	2.0%
17 Escambia	0.9%	1.9%	0.7%	0.5%	1.4%	1.0%	0.0%
18 Flagler	1.4%	1.2%	0.4%	0.0%	6.7%	1.0%	#
19 Franklin	5.2%	0.0%	#	#	#	#	#
20 Gadsden	5.0%	2.5%	4.5%	#	#	7.1%	#
21 Gilchrist	0.6%	3.2%	0.0%	#	#	#	#
22 Glades	3.4%	4.9%	2.5%	#	#	#	#
23 Gulf	0.6%	0.0%	0.0%	#	#	0.0%	#
24 Hamilton	2.1%	5.2%	7.7%	#	#	#	#
25 Hardee	4.2%	2.0%	6.4%	0.0%	#	#	#
26 Hendry	3.0%	1.9%	4.2%	#	#	9.1%	#
27 Hernando	2.5%	3.4%	1.8%	0.0%	0.0%	1.2%	#
28 Highlands	3.4%	5.2%	4.4%	1.9%	12.5%	7.8%	#
29 Hillsborough	0.6%	1.7%	1.1%	0.4%	1.0%	0.7%	0.0%
30 Holmes	3.1%	0.0%	3.1%	#	#	0.0%	#
31 Indian River	0.5%	0.9%	0.6%	0.0%	0.0%	0.7%	#
32 Jackson	1.4%	1.6%	1.5%	#	0.0%	0.0%	#
33 Jefferson	0.0%	0.6%	0.0%	#	#	#	#
34 Lafayette	0.0%	0.0%	2.0%	#	#	#	#
35 Lake	2.2%	2.5%	1.7%	0.0%	1.6%	1.5%	#
36 Lee	1.0%	1.0%	1.2%	0.5%	3.1%	1.0%	0.0%
37 Leon	0.3%	1.4%	0.2%	0.0%	0.0%	0.0%	#
38 Levy	1.6%	0.9%	1.3%	0.0%	#	0.0%	#
39 Liberty	0.8%	0.0%	0.0%	#	#	#	#
40 Madison	0.3%	0.2%	0.0%	#	#	#	#
41 Manatee	1.0%	2.8%	2.4%	0.5%	3.1%	0.7%	#
42 Marion	1.4%	3.1%	1.4%	0.0%	1.1%	0.8%	0.0%
43 Martin	0.1%	1.7%	1.4%	0.0%	0.0%	0.0%	#
44 Monroe	1.0%	1.9%	2.0%	0.0%	#	1.8%	#
45 Nassau	0.4%	0.0%	0.6%	0.0%	0.0%	0.0%	#
46 Okaloosa	1.2%	1.7%	1.3%	0.4%	0.0%	0.7%	0.0%
47 Okeechobee	5.9%	4.1%	4.8%	0.0%	8.9%	6.1%	#
48 Orange	0.8%	2.4%	1.2%	0.2%	0.4%	0.4%	0.0%
49 Osceola	0.9%	0.5%	0.8%	0.2%	0.0%	1.0%	0.0%
50 Palm Beach	1.9%	5.1%	3.4%	0.8%	2.8%	3.0%	12.2%
51 Pasco	1.0%	0.7%	0.9%	0.0%	0.8%	0.9%	0.0%
52 Pinellas	1.9%	5.0%	2.7%	1.4%	2.4%	2.4%	1.6%
53 Polk	5.3%	7.4%	5.8%	1.8%	8.1%	5.6%	0.0%
54 Putnam	4.5%	4.6%	6.6%	5.9%	21.4%	8.3%	#
55 St. Johns	1.0%	2.1%	0.8%	0.0%	0.0%	3.3%	0.0%
56 St. Lucie	1.5%	3.1%	1.1%	0.0%	0.0%	2.6%	5.0%
57 Santa Rosa	1.1%	2.2%	1.1%	0.0%	0.0%	0.9%	0.0%
58 Sarasota	1.2%	3.3%	1.8%	0.3%	1.4%	2.6%	10.0%
59 Seminole	0.3%	0.4%	0.3%	0.0%	0.0%	0.6%	0.0%
60 Sumter	2.9%	2.1%	2.6%	0.0%	#	2.7%	#
61 Suwannee	0.5%	1.4%	1.1%	0.0%	#	0.0%	#
62 Taylor	3.1%	3.3%	0.0%	#	#	7.1%	#
63 Union	1.1%	0.9%	3.7%	#	#	5.9%	#
64 Volusia	0.8%	1.3%	1.1%	0.0%	1.3%	0.6%	0.0%
65 Wakulla	1.1%	0.0%	0.0%	0.0%	0.0%	1.8%	#
66 Walton	2.1%	1.6%	2.5%	0.0%	14.3%	2.2%	#
67 Washington	2.9%	2.2%	0.0%	#	#	0.0%	#
68 Deaf/Blind	0.0%	0.0%	0.0%	#	#	0.0%	#
69 Wash. Special	0.0%	0.0%	0.0%	#	#	#	#
71 FL VIRTUAL	3.2%	1.6%	2.1%	0.0%	#	3.1%	#
72 FAU	0.0%	0.0%	0.0%	0.0%	#	0.0%	#
73 FSU	0.0%	0.0%	0.0%	0.0%	#	0.0%	#
74 FAMU	#	0.0%	#	#	#	#	#
75 UF	0.4%	1.9%	1.1%	0.0%	#	0.0%	#
FLORIDA	1.5%	3.4%	1.9%	0.6%	2.4%	1.7%	1.7%

*Source: 2012-13 Florida Department of Education (FDOE) dropout data as of 11/1/13.

A pound sign (#) replaces data when the subgroup population is fewer than ten students. A blank cell indicates no students in the subgroup population.

Table 12: 9th-12th Grade Single-Year Dropout Rates by District, 2008-09 through 2012-13

District	2008-09	2009-10	2010-11	2011-12	2012-13*
01 Alachua	2.6%	2.2%	2.4%	2.8%	3.5%
02 Baker	2.0%	3.8%	2.5%	1.9%	1.1%
03 Bay	0.8%	1.4%	1.1%	1.2%	1.3%
04 Bradford	3.1%	5.1%	4.0%	3.3%	2.7%
05 Brevard	0.6%	0.5%	0.7%	0.6%	0.7%
06 Broward	2.1%	1.6%	1.3%	2.0%	2.1%
07 Calhoun	0.6%	2.2%	3.3%	2.1%	1.5%
08 Charlotte	2.8%	3.1%	2.4%	2.9%	2.9%
09 Citrus	1.4%	1.2%	1.2%	1.4%	1.7%
10 Clay	1.2%	1.3%	1.0%	1.2%	1.0%
11 Collier	2.2%	2.0%	1.9%	2.2%	2.0%
12 Columbia	0.7%	0.6%	0.6%	0.5%	0.3%
13 Miami-Dade	3.9%	4.0%	3.5%	2.7%	2.6%
14 DeSoto	4.6%	5.2%	2.2%	4.7%	1.9%
15 Dixie	5.1%	4.2%	1.6%	0.9%	0.9%
16 Duval	4.8%	2.2%	2.3%	2.9%	4.1%
17 Escambia	2.1%	1.6%	2.5%	1.4%	1.2%
18 Flagler	2.2%	1.8%	1.7%	1.8%	1.3%
19 Franklin	5.4%	0.3%	0.8%	4.1%	4.3%
20 Gadsden	4.2%	1.6%	2.7%	3.7%	2.9%
21 Gilchrist	0.2%	0.2%	0.2%	1.1%	0.7%
22 Glades	3.8%	1.4%	2.4%	2.2%	3.4%
23 Gulf	1.4%	0.3%	0.2%	0.5%	0.5%
24 Hamilton	3.6%	4.4%	2.7%	3.1%	4.2%
25 Hardee	4.9%	3.3%	2.5%	4.4%	5.2%
26 Hendry	3.1%	3.5%	3.0%	2.6%	3.6%
27 Hernando	2.7%	2.6%	3.1%	2.7%	2.4%
28 Highlands	4.2%	3.2%	7.2%	3.7%	4.1%
29 Hillsborough	1.0%	0.7%	0.8%	0.9%	1.0%
30 Holmes	1.7%	2.2%	2.8%	2.4%	3.0%
31 Indian River	1.5%	1.7%	0.3%	0.4%	0.6%
32 Jackson	2.0%	1.8%	1.2%	1.5%	1.4%
33 Jefferson	1.8%	7.8%	3.2%	6.0%	0.4%
34 Lafayette	0.7%	0.3%	1.6%	1.2%	0.3%
35 Lake	2.9%	3.0%	2.3%	2.0%	2.1%
36 Lee	1.3%	1.3%	1.9%	1.3%	1.1%
37 Leon	3.0%	0.8%	2.7%	0.9%	0.7%
38 Levy	4.2%	5.5%	2.3%	1.1%	1.4%
39 Liberty	1.3%	1.8%	0.5%	0.7%	0.6%
40 Madison	2.4%	3.1%	1.2%	0.4%	0.2%
41 Manatee	3.6%	4.3%	3.1%	1.8%	1.6%
42 Marion	2.6%	0.5%	0.9%	2.0%	1.7%
43 Martin	0.7%	0.6%	0.6%	0.6%	0.5%
44 Monroe	0.6%	1.1%	2.0%	1.7%	1.4%
45 Nassau	2.1%	1.3%	0.4%	0.2%	0.3%
46 Okaloosa	1.0%	0.4%	0.2%	1.5%	1.2%
47 Okeechobee	3.9%	4.6%	5.3%	4.5%	5.4%
48 Orange	1.1%	0.7%	1.2%	1.8%	1.3%
49 Osceola	1.0%	1.4%	1.6%	1.1%	0.8%
50 Palm Beach	2.6%	2.8%	2.6%	2.5%	3.3%
51 Pasco	1.2%	1.1%	1.0%	1.0%	0.9%
52 Pinellas	2.1%	2.4%	1.8%	1.3%	2.6%
53 Polk	4.0%	4.1%	4.2%	5.3%	5.9%
54 Putnam	3.3%	3.9%	2.7%	4.0%	5.0%
55 St. Johns	1.1%	0.9%	0.8%	0.8%	1.1%
56 St. Lucie	1.4%	2.3%	2.2%	2.1%	1.9%
57 Santa Rosa	1.8%	0.9%	1.0%	1.7%	1.1%
58 Sarasota	1.8%	2.0%	1.9%	2.2%	1.5%
59 Seminole	0.4%	0.4%	0.4%	0.4%	0.3%
60 Sumter	3.3%	2.0%	2.2%	2.3%	2.7%
61 Suwannee	3.4%	2.7%	1.3%	1.3%	0.6%
62 Taylor	2.8%	3.5%	4.3%	3.4%	3.0%
63 Union	1.0%	1.5%	2.0%	0.7%	1.3%
64 Volusia	1.3%	1.1%	1.2%	0.9%	0.9%
65 Wakulla	2.9%	3.4%	1.9%	1.8%	0.9%
66 Walton	2.6%	1.3%	2.2%	3.6%	2.2%
67 Washington	1.2%	1.6%	2.5%	2.8%	2.7%
68 Deaf/Blind	0.0%	0.0%	0.0%	0.3%	0.0%
69 Wash. Special	1.4%	0.0%	0.3%	0.0%	0.0%
71 FL VIRTUAL				3.9%	2.8%
72 FAU	0.0%	0.0%	0.0%	0.0%	0.0%
73 FSU	0.0%	0.0%	0.0%	0.0%	0.0%
74 FAMU	0.0%	0.0%	0.0%	0.0%	0.0%
75 UF	0.2%	0.0%	0.0%	0.0%	0.8%
FLORIDA	2.3%	2.0%	1.9%	1.9%	2.0%

*Source: 2012-13 Florida Department of Education (FDOE) Automatic Student Database as of 11/1/13.